

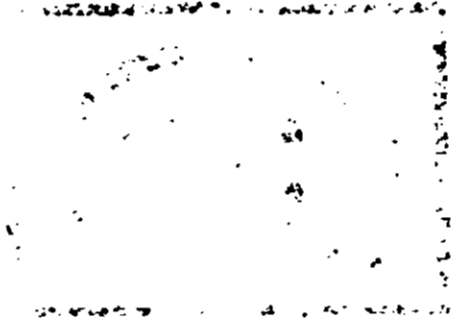
DO NOT OPEN UNTIL TELL YOU TO



IMPORTANT - READ THIS BEFORE YOU USE

Cut or tear this package along dotted line.
Remove water soluble pack and place in spray
tank (see instructions). Remove outer poly bag.

DO NOT OPEN UNTIL TELL YOU TO



ACC
148-1128

SEVIN[®]
CONCENTRATE

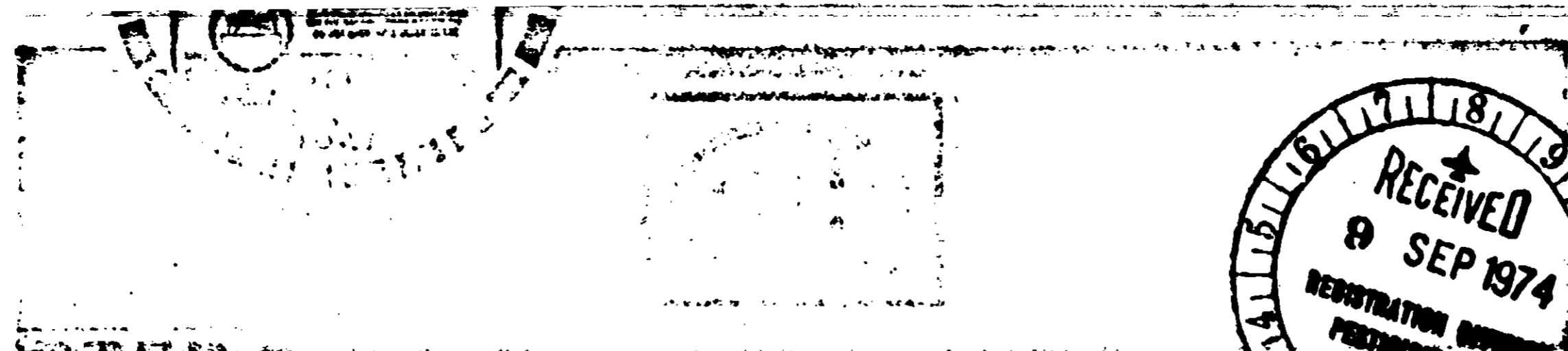
Active Ingredient:
(1-naphthyl methylcarbamate)..... 80% by wt.
Inert Ingredients: 20% by wt.

KEEP OUT OF REACH OF CHILDREN AND ANIMALS.

HARMFUL IF INHALED OR SWALLOWED. Avoid Breathing of Dust or Spray. Do Not Take Internally. Avoid Contact with Skin and Eyes.

Wear regular long-sleeved work clothing. Change to clean clothing daily. Wash hands and face before eating. Wash thoroughly after handling.

NOTE FOR PHYSICIAN: Carbaryl is a moderate, reversible, cholinesterase inhibitor. Atropine is antidotal. Do Not Use



ACT
148-1128
DO NOT
FOR
ED USE
TO ATTRACT

SEVIN®

80-W

Active Ingredient:
(1-naphthyl methylcarbamate)..... 80% by wt.
Inert Ingredients: 20% by wt.

CAUTION: KEEP OUT OF REACH OF CHILDREN AND ANIMALS.

HARMFUL IF INHALED OR SWALLOWED. Avoid Breathing of Dust or Spray. Do Not Take Internally. Avoid Contact with Skin and Eyes.

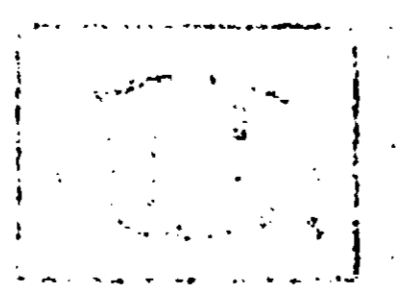
Wear regular long-sleeved work clothing. Change to clean clothing daily. Wash hands and face before eating. Wash thoroughly after handling.

NOTE FOR PHYSICIAN: Carboaryl is a moderate, reversible, cholinesterase inhibitor. Atropine is antidotal. Do Not Use 2-PAM, opiates, or cholinesterase inhibiting drugs.

AVOID CONTAMINATION OF FOOD, FEED, WATER SUPPLIES, STREAMS AND PONDS.

EPA Reg. No. 149-1123

U.S. Pat. Nos. 2,905,474 and 3,020,015
SEVIN is the registered trade name of Union Carbide Corp. for carbaryl insecticide.



DO NOT OPEN UNTIL READY TO USE

BEFORE USE, READ DIRECTIONS, WARNING AND NOTICE STATEMENTS CAREFULLY

Consult agricultural extension or agricultural station specialist regarding timing recommendations.

DIRECTIONS FOR USE

MIXING: Before adding SEVIN 80-W to the spray tank, partially fill with water. Cut or tear this package along dotted line. Remove inner soluble inside package and place in partially filled tank while agitating. Destroy this poly bag after use, do not reuse. After mixing thoroughly, add remaining water to spray tank. Continuous agitation within the spray tank is essential. Wash out spray tank thoroughly after use and dispose of washings by burying away from water supplies.

For ground application, use at least 15 gallons of water per acre. For aerial application, use from 3 to 10 gallons of water per acre.

Recommended dosages refer to the number of 1 1/2 pound packages of SEVIN 80-W per acre. Use 16 gallons of spray or more to insure thorough coverage.

POTATO, TOMATO, CUCUMBER and PEPPER: Use 1 package for Colorado potato beetle, flea beetles and leafhoppers. Use 1 to 2 packages for European cornborer, fall armyworm, lace bugs, tomato fruit borer, tomato hornworm, tarnished plant bug and cutworms. Use 2 packages for cucumber beetle on potato, tomato and eggplant. Application may be made up to the day of harvest.

Where aphids are a problem on potatoes, use one pound of DDFENO 42-25 (1/2 pound dimethoate per acre).

CUCUMBER: Use 1 or 2 packages for European fruit borer, grape leaf miner, grape leaf hopper, and green stink bug. Apply to foliage that grows to a height of 12 inches or less. For control of cucumber beetle, use 2 packages for cucumber beetle on cucumber, melon, squash and pumpkin. A dust spray of 10 gallons per acre is suggested. Application may be made up to the day of harvest.

ALFALFA, CLOVER, CORN, PEANUTS and SOYBEANS: Use 1 package for hairy woodpecker and alfalfa weevil. Use 1 package for alfalfa cutworm, bean leaf beetle, corn rootworm, green cloverworm, Japanese beetle, leaf miner, leafhopper, and soybean beetle. Use 1 package for armyworm, corn earworm, and cutworm. For control of alfalfa weevil, use 1 package. If severe pest damage is extensive, and the alfalfa and soybean application is made up to the day of harvest, do not spray when forecast is wet or a heavy rain or excessive humidity is expected during the next 2 days.

WARNING! Do not apply a continuous application of Sevin 80-W to alfalfa or soybeans at 175 or 180 lb/acre (175 or 180 lb/acre) to soybeans.

Application may be made up to the day of harvest.

DIRECT CONTROL

TOMATOES: For cutworms, flea beetles, Japanese beetle, June beetle, and hornworms, use 1 to 2 packages per acre. For control of the European cornborer, use 1 package. For control of the European cornborer, use 1 package. For control of the European cornborer, use 1 package. For control of the European cornborer, use 1 package.

PEANUTS: For control of the European cornborer, use 1 package. For control of the European cornborer, use 1 package. For control of the European cornborer, use 1 package. For control of the European cornborer, use 1 package.

SOYBEANS: For control of the European cornborer, use 1 package. For control of the European cornborer, use 1 package. For control of the European cornborer, use 1 package. For control of the European cornborer, use 1 package.

ALFALFA: For control of the European cornborer, use 1 package. For control of the European cornborer, use 1 package. For control of the European cornborer, use 1 package. For control of the European cornborer, use 1 package.

CUCUMBER: For control of the European cornborer, use 1 package. For control of the European cornborer, use 1 package. For control of the European cornborer, use 1 package. For control of the European cornborer, use 1 package.

PEPPER: For control of the European cornborer, use 1 package. For control of the European cornborer, use 1 package. For control of the European cornborer, use 1 package. For control of the European cornborer, use 1 package.

NOTICE: SEVIN 80-W is a restricted use pesticide. This product is highly toxic to bees exposed to direct treatment or residues on crops. For more information, see the label.

Do not apply to any food or feed crop unless specifically recommended on this label. Do not apply to any food or feed crop unless specifically recommended on this label. Do not apply to any food or feed crop unless specifically recommended on this label.

Apply at dusk, dawn, and every 10-14 days thereafter until control is obtained.

BEFORE USE, READ DIRECTIONS, WARNING AND NOTICE STATEMENTS CAREFULLY

Consult agricultural extension or agricultural station specialist regarding timing recommendations.

DIRECTIONS FOR USE

MIXING: Before adding SEVIN 80-W to the spray tank, partially fill with water. Put at least this package (one pound) of SEVIN 80-W in a separate container and place in partially filled tank while agitating. Distribute the SEVIN 80-W in the tank evenly, add remaining water to spray tank. Continual agitation within the spray tank is essential. Wash out spray tank thoroughly after use and dispose of washings by burying away from water supplies.

For ground application, use at least 15 gallons of water per acre.
For aerial application, use from 3 to 10 gallons of water per acre.

Recommended dosages refer to the number of 1½ pound packages of SEVIN 80-W per acre. Use 15 gallons of spray or more to insure thorough coverage.

POTATO, TOMATO, EGGPLANT and PEPPER: Use 1 package for Colorado potato beetle, leaf beetles and leafhoppers. Use 1 to 2 packages for European cornborer, leaf-miner, lace bugs, tomato fruitworm, tomato hornworm, tarnished plant bugs and stink bugs. Use 2 packages for European cornborer on potato, tomato and eggplant. Application may be made up to the day of harvest.

Where aphids are a problem on potatoes, use one pound of DE-FEND W-25 (½ pound dimethoate per acre).

GRAPES: Use 1 to 2 packages for European fruit borer, grape leaf folder, grape leafhopper, and grape leaf skeletonizer. Apply just before first brood leaf folder larvae emerge from eggs and as needed for leafhoppers. Use 2 packages for grape berry moth, grape cluster fly, June beetles and recommended leafhoppers. A dilute spray of 200 gallons per acre is suggested. Application may be made up to the day of harvest.

ALFALFA, CLOVERS, COWPEAS, PEANUTS and SOYBEANS: Use 1 package for Hessian flies and Mexican bean beetle. Use 1 package for alfalfa caterpillar, bean leaf beetle, cucumber beetle, green cloverworm, Japanese beetle, leafhopper, thistle caterpillar, alfalfa hopper, thrips and velvet bean caterpillar. Use 1 package for armyworm, corn earworm, stink bug and weevils. Use 1 package for control of alfalfa weevil larvae in the seedling. If pre-treatment damage is extensive, cut the alfalfa and make the application to the stubble. To avoid possible injury on leafy foliage, do not spray when foliage is wet or when rain or excessive humidity is expected during the next 2 days.

WARNING! Do not apply a combination of SEVIN 80-W and 2,4-DB herbicide (such as "Guthrie" 175 or "Outstanding" 88) to soybeans.

Application may be made up to the day of harvest.

INSECT CONTROL

TOBACCO: For budworms, flea beetles, Japanese beetles, June beetles, and hornworms, use 1 to 2 packages per acre to effect control. Use low rate on young plants up to 4 inches high. Apply at intervals on mature plants. The present tobacco is a product of the present-day. Begin treatments when worms are small. Avoid late heavy application. Do not spray more than once. Treated fields may be entered immediately after 24 hours. Make applications as needed. Do not spray on hot or windy days.

APPLES and PEACHES: West of the Rocky Mountains: Use 1 package for apple stem sawfly, grass apple aphid, and yellow apple sawfly. Control of leaf hopper, codling moth, apple rust mite, pear leaf miner, peach twig borer, and other budworms. Use 1 package per acre. Do not spray more than once. Do not spray on hot or windy days. Do not spray on wet foliage. Do not spray on plants with young nymphs or pupae. Apply when young nymphs or pupae are present. Repeat applications if necessary for optimum control.

Applications of SEVIN 80-W should be made after full bloom in orchards. Do not spray on plants to avoid the danger of injury to the fruit. Do not spray on plants in bloom. Do not spray on plants in bloom. Do not spray on plants in bloom.

East of the Rocky Mountains: Use 1 package for apple stem sawfly, grass apple aphid, and yellow apple sawfly. Control of leaf hopper, codling moth, apple rust mite, pear leaf miner, peach twig borer, and other budworms. Use 1 package per acre. Do not spray more than once. Do not spray on hot or windy days. Do not spray on wet foliage. Do not spray on plants with young nymphs or pupae. Apply when young nymphs or pupae are present. Repeat applications if necessary for optimum control.

Application of SEVIN 80-W within 30 days after full bloom may also provide some control. To avoid the danger of injury to the fruit, do not spray on plants in bloom. Do not spray on plants in bloom. Do not spray on plants in bloom.

Do not spray on a day of harvest of apples and peaches.

ALFALFA COMMONLY BEING IMPORTED: In alfalfa, the present-day. Begin treatments when worms are small. Avoid late heavy application. Do not spray more than once. Treated fields may be entered immediately after 24 hours. Make applications as needed. Do not spray on hot or windy days.

Do not spray when value of bees is high. Do not spray on plants with young nymphs or pupae. Apply when young nymphs or pupae are present. Repeat applications if necessary for optimum control.

PEANUTS: Do not spray on plants with young nymphs or pupae. Apply when young nymphs or pupae are present. Repeat applications if necessary for optimum control.

Apply at 10-14 day intervals and every 10-14 days thereafter until control is achieved.

Do not spray on plants with young nymphs or pupae. Apply when young nymphs or pupae are present. Repeat applications if necessary for optimum control.

COMPATIBILITY

1. SEVIN 80-W has been effectively used without plant injury with common insecticides and fungicides except (a) where mixtures have contained a number of pesticides, or (b) under adverse conditions such as high humidity, drought, improper fertilization, etc.
2. SEVIN 80-W forms a finely divided uniform suspension alone and when combined with many other pesticides. Incompatible mixtures curdle or precipitate and may injure crops or reduce control. Compatibility can be affected by water in your locality, various surfactants and other formulation ingredients. Do not apply if physically incompatible.
3. Do not mix SEVIN 80-W with nutrients or adjuvants (or with more than one other pesticide) unless your experience indicates that the mixture is safe and effective. If uncertain, prepare a small amount of the mixture and test on a representative portion of the crop.
4. Compatible with petroleum oil as used on citrus. Do not use with summer oils on deciduous fruits.
5. Unstable under highly alkaline conditions. Not effective if used with alkaline materials such as Bordeaux, lime, lime sulfur and casein-lime spreaders.

GENERAL CAUTIONS

1. To avoid possible injury on tender foliage, do not apply when foliage is wet or when rain or excessive humidity is expected during the next 2 days.
2. Does not control spider mites but is compatible with common miticides.

IMPORTANT PRE-HARVEST AND GRAZING USE INFORMATION AND LIMITATIONS

Tolerances established under the Federal Food, Drug and Cosmetic Act permit the sale of crops bearing probable SEVIN residues when SEVIN is used in accordance with label directions. Pre-harvest and grazing use limitations are listed at the end of the directions for each crop use. Where no pre-harvest or grazing time limitations are stated, application can be made to the day of harvest and crops can be grazed without time delay if directions for use on the crop are followed.

If SEVIN insecticide is used in accordance with label directions, forage and feed crops, including almond hulls, bean vines, carrot tops, citrus pulp, cotton forage, corn hay, peanut hay, pea vines, rice straw, soybean hay, and sugar beet tops, may be grazed or harvested for use as feed for dairy and meat animals without resulting in residues in milk or meat.

DIRECTIONS FOR USE

IMPORTANT. The directions on this label are based on tests and field experience relating to (a) effectiveness; and (b) possible injury to plants and animals; and (c) residues in food, feed, meat and milk. Follow directions for most effective and safest use.

SPECIAL DIRECTIONS FOR PREPARING LOW-GALLONAGE SPRAYS

In low-gallonage ground equipment: Use 50-mesh or coarser screens in entire system; nozzles should be cone type, number 3 or larger. Use clean equipment. Put about 3/4 of the required water volume in the spray tank. Close off booms, start pump and maintain moderate by-pass agitation while adding the water soluble bag in the tank. Add remaining water and continue to agitate until suspension is uniform; then apply using at least 3 gallons per acre of the prepared spray. After spraying, flush tank and lines with clear water.

For airplane application: For preparing spray in mixing or storage tank, follow above directions. To maintain uniform suspension, recirculate at intervals and before pumping into airplane tank. For best results, use clean equipment and apply 1 to 3 gallons per acre of the prepared spray. After spraying, flush tanks and lines with clear water.

Combination spray mixtures in low-gallonage equipment and airplanes: Physical compatibility of SEVIN 80-W with other pesticides in low-gallonage mixtures is not fully known. Before preparing large amounts, combinations should be tested by fully dispersing SEVIN 80-W, then adding the other pesticide and the remaining portion of water. DO NOT USE MIXTURES THAT CURDLE OR PRECIPITATE. Incompatibility will reduce insect control and may cause mechanical difficulties or plant injury. Use caution when applying concentrate spray mixtures. Under adverse growing conditions, combinations of SEVIN with some phosphate pesticides may cause foliar injury.

COTTON INSECT CONTROL

Recommended dosages refer to package of SEVIN 80-W per acre. Use at least 3 gallons of mixed spray per acre and increase to higher gallonage on larger plants. For improved bollworm control, substitute blackstrap molasses (food grade) for part of the water in the mixed spray. Use 1 gallon of molasses per acre. To avoid staining lint, do not use molasses after bolls open.

Use 1 package for early-season thrips, flea beetles, cotton fleahopper, striped blister beetle and cotton leafworm.

Use 1 to 2 packages, depending on the size of the cotton and insect population level, for mid- and late-season boll weevil, bollworm, fall armyworm, cotton leaf perforator, leaf rollers, leafhoppers and tarnished plant bug. Also for light-to-moderate infestation of lygus bugs in Western irrigated cotton. Applications should be made every 5 to 7 days as long as control is necessary.

Use 2 packages for mid-boll worm on a 1 to 2 day schedule depending on the size of the cotton and degree of infestation.

Use 2 packages for diamond-back and silk-moth caterpillar.

Use 1 package for grasshopper.

Additional insects will be controlled by separate application of other insecticides. SEVIN does not control spider mites. Mite infestations should be treated with a mite acaricide.

INSECT CONTROL OF COTTON INSECT CONTROL

On alfalfa and clover, use 1 package for cutworm control.

In corn, use 2 packages for European cornborer. Apply 2 applications beginning at first bloom and at 7-day intervals thereafter.

To avoid possible injury on corn, do not apply SEVIN to corn until at least 2 weeks after the soil has been plowed.

RICE: In the Mississippi Delta and Texas, use 1 package for army and stalk borers.

WHEAT: To avoid plant injury, do not apply before heading, if possible has been or will be applied.

In California, use 2 packages for stalk borer. Use optimum label dosage control apply to the water in the tank and in the boom.

Warning: To avoid plant injury, do not apply SEVIN to soybeans until. Do not apply within 14 days of harvest.

> **FORAGE GRASSES AND PASTURE.** Use 1 package for armyworms and thrips. For thrips control in grasses grown for seed, high spray pressure may help penetration into boot.

SORGHUMS (including MILO AND GRAIN SORGHUM): Use 1 to 2 packages for armyworms, corn earworm, stink bugs and webworms. Use 1 package for sorghum midge. Use 2 packages for cutworm control. For optimum insect control on grain sorghum, direct spray into the forming heads. Treat for sorghum midge 1 to 4 days after heads have emerged from boot.

Do not apply within 21 days of harvest of grain. No time limitation on sorghams used for forage.

STUMP BERTS: Use 1 to 2 packages for armyworms, leafhoppers and webworms.

Do not apply within 14 days of harvest.

GRASSHOPPERS: Apply 1 package as often as necessary to control grasshoppers on the above forage crops. Follow pre-harvest and grazing use limitations listed for each of the above crops. A 1 package rate is suggested for nymphs on small plants or sparse vegetation in wasteland, rangeland, ditchbanks and borders.

TOBACCO INSECT CONTROL

IN PLANT BEDS: For tobacco flea beetle, use 1 package per 50 gallons, and apply 6 gallons per 100 square yards.

VEGETABLE INSECT CONTROL

CORN: Use 1 to 2 packages for corn earworm, corn rootworm adults, European corn borer, fall armyworm, flea beetles, Japanese beetle, sap beetles and leafhoppers. For larvae in whorl (budworm damage) and foliage feeders, apply to entire plant. Repeat as necessary. For insects attacking silks and ears, apply at 2 to 3-day intervals starting when first silks appear and continuing until silks begin to dry. Three or more applications may be required depending on severity of infestation. Timing and good coverage are absolutely essential for effective control. Use 2 packages in at least 10 gallons of water for cutworm control. Spray in 12-inch band over the corn row. Use proportionate amounts for narrower bands or broadcast. Application of SEVIN 50-D to the tassel region of corn during the pollen shed period will seriously reduce bee populations.

BEANS (Green beans, lima beans, snap beans, cowpeas or black-eyed peas): Use 1 package for bean leaf beetle, cucumber beetle, corn beetles, Japanese beetle, leafhoppers, velvet bean caterpillar, western bean cutworm, armyworms, cutworms, corn earworm, stink bugs and tarnished plant bug. In California use 2 packages for corn earworm, lima bean pod borer, Lygus and stink bugs.

ASPARAGUS: Use 1 to 2 packages for asparagus beetle on seedlings or young. Use 2 to 4 packages for asparagus beetle and Japanese cicada on ferns or branch growth in the post-harvest period. Do not apply more often than once every 3 days.

Do not apply within 1 day of harvest.

CABBAGES, CHINESE CABBAGE, CHICARDS, BROCCOLI, CAULIFLOWER, BRUSSELS SPROUTS, GARDEN LETTUCE, ROMAINE, KALE, LETTUCE, WATERSALAD, SPINACH, TOMATOES, PEAS, BEANS, LIMA BEANS, ASPARAGUS, CAULIFLOWER, SPINACH, SWISS CHARD AND TURNIPS: Use 1 package for flea beetles, harlequin bug and leafhoppers.

To control six-spotted leafhopper (water yellow vector) apply 1 package in a 5 to 7-day schedule. Use 1 to 2 packages for armyworms, cabbage worms and looper, cutworms, tarnished plant bug and stink bugs. For optimum control of corn earworm after 1/2 inch heads begin to form, use 2 packages in a 5 to 7-day schedule where cutworm looper is the principal problem, use an alternative pesticide that is specifically recommended. For control of small cabbage loopers in commercial plantings and readable portions begin to form use 1 to 2 packages in a 5 to 7-day schedule. To avoid possible injury to lettuce, do not apply this product if rain or excessive humidity is expected during the next 2 days.

Do not apply within 3 days of harvest of head lettuce, garden beets (roots), horseradish, radishes, parsnips, rutabagas, salsify (roots), and turnips (roots). Do not apply within 14 days of harvest of chinese cabbage, collards, dandelion, endive (escarole), garden beets (tops), kale leaf lettuce, mustard greens, parsley, salsify (tops), spinach, Swiss chard and turnips (tops).

No time limitation on carrots.

CUCUMBER, MELONS, PUMPKIN, SQUASH: Use 1 package for pickleworm and melonworm, cucumber beetles, flea beetles, leafhoppers and squash bugs. Avoid excessive applications.

To avoid possible injury on tender foliage, do not apply when foliage is wet or when rain or excessive humidity is expected during the next 2 days. SEVIN injures watermelons in Florida.

GARDEN PEAS: Use 1 package for leafhoppers, Colorado potato beetle. For Colorado potato beetle control apply to weeds in fields of garden peas to help prevent insect contamination in processed peas. Use 1 package for armyworms and grasshoppers. Use 2 packages for alfalfa looper in State of Washington only. Repeat as necessary.

ONION: Use 1 to 2 packages for corn earworm and stink bugs. Repeat at 5 to 7-day intervals or as necessary.

CABBAGE, BROCCOLI, BRUSSELS SPROUTS, CAULIFLOWER AND KOHLRABI: Use 1 package for flea beetles and harlequin bug. Use 1 to 2 packages for armyworms, cabbage worms and loopers, and corn earworm. Where cabbage looper is the principal problem, use an alternative pesticide that is specifically recommended. For control of small cabbage loopers in commercial plantings after edible portions begin to form, use SEVIN in a 5 to 7-day schedule.

Do not apply within 3 days of harvest of these crops.

POULTRY INSECT CONTROL

CHICKENS, TURKEYS, DUCKS, GEESE, GAME BIRDS AND PIGEONS:

Spray Roosts and Buildings with conventional power spray or backpack equipment. Control chicken mite, fleas and bed bugs by mixing 1 package per 20 gallons and applying at 1 to 2 gallons per 100 square feet of wall, litter or roost surface. Increase dosage to 4 packages per 20 gallons for fowl tick control. Do not spray into cracks. Repeat as needed.

Ventilate while spraying. Avoid contamination of nests, eggs and feeding and watering troughs.

Do not apply to poultry and game birds or to their premises within 7 days of slaughter.

TREE AND SHrub INSECT CONTROL

ALMOND: Use 1 package for peach twig borer, San Jose scale and fruit tree leaf roller. Apply in "popcorn" or petal fall stages and again when the young brood of the peach twig borer begins to hatch or thereafter as needed.

GILBERT: Use 1 package for Gilbert's spid, Gilbert leaf roller and lilac sawfly moth. A dilute spray of 400 gallons per acre is suggested. Apply from leaf roller eggs are hatching. Repeat on first appearance of adult Gilbert scale and again 3 to 4 weeks later.

WAXMOTH: For codling moth, fruit bud scale, European fruit tree scale, scale, codling scale, lilac sawfly and fruit tree leaf roller, in concentrated areas use 1 to 3 packages in at least 200 gallons per acre. For coating with spray use 1 to 2 packages in average cross-sectional diameter of developing cuts measuring up to 1/4 inch. Repeat during middle or late June as needed. Use 2 packages for San Jose scale. Spray tree trunks to point of runoff.

ORNAMENTAL INSECT CONTROL

Use 1 package per 100 gallons of water when insects or their damage appear.

Repeat weekly or as needed. SEVIN injures Boston ivy.

Use on herbaceous and annual plants (carnation, gladioli, zinnia, chrysanthemum, etc.) to control:

blister beetle	June beetle	mealybug
flea beetle	lace bug	plant bug
boxelder bug	leafhopper	psyllid
Japanese beetle	leaf roller	rose aphid
		thrips (exposed)

Use on shrubs, trees and woody plants (rose, lilac, arbor vitae, juniper, hydrangea, azalea, elm, maple, oak, dogwood, birch, pine, etc.) to control:

apple aphid	June beetle	plant bug
bagworm	lace bug	grass caterpillar
birch leaf miner	leafhopper	rose aphid
boxelder bug	leaf roller	rose slug
boxwood leaf miner	mealybug	scale insects
elm leaf aphid	mimosa webworm	tent caterpillar
elm leaf beetle	oak leaf miner	thorn bug
gypsy moth	orange tortrix	thrips (exposed)
Japanese beetle	periodical cicada	willow leaf beetle

LAWN INSECT CONTROL

Use 1 package in 150 to 200 gallons of water for each 5000 square feet of established lawn area for the control of:

chinch bugs	fall armyworm	ants
leafhoppers	cutworms	fleas
sod webworms (lawn moths)	earwigs	mosquitos
		millipedes

ADULT MOSQUITOES

Use on pasture, range, and non-agricultural lands, such as yards, parks, recreational areas, logging camps, military posts and adjacent forested lands or woodlands.

Use 1 package per acre in suitable low pressure ground equipment. Apply in sufficient spray gallons to effectively cover areas to be treated. For optimum control apply in early evening or evening when air is calm and adult mosquitoes are active. Use 1 package per 100 gallons in hydraulic sprayers for treating backyards or other limited areas. Thoroughly cover lower side tree foliage, shrubbery, flower beds, grass and shaded areas around buildings where adult mosquitoes congregate. Repeat at 7 to 10-day intervals or as necessary. SEVIN injures Boston ivy.

PSYLLID CONTROL IN HOUSEHOLD BUILDINGS

(Use only by household exterminator only)

Use on apartment houses, hotels, motels, schools, hospitals, nursing homes, and other public buildings, where the pest is a nuisance.

Use on crickets and grasshoppers in lawns, gardens, and other areas where they are a nuisance. Apply as a contact spray or dust to the plants and soil. Use on household pests, such as ants, earwigs, cutworms, and other insects that invade homes and buildings. Repeat as necessary.

Do not use on a space spray. Repeat when necessary at intervals of 7 to 10 days.

Use on mosquitoes in lawns, gardens, and other areas where they are a nuisance. Apply as a contact spray or dust to the plants and soil.

For control of adult psyllids in ornamental plants, use a 2% suspension and apply at the rate of 1 quart per 1000 square feet of surface area (see directions on label for use on plants). Repeat as necessary.

MIXING DIRECTIONS

Gallons of water spray desired	Amount of SEVIN 20-W needed to make 2.5% Suspension
5	1 package
10	2 packages

NOTE: Do not use in the edible products areas of food processing plants, restaurants, or other areas where food is commercially prepared or processed. Do not use in sleeping areas while food is exposed.

Fresh bedding should be placed in animal quarters following treatment. Do not spray animals. Do not spray kennels or other areas until animals have been removed. See caution.

Do not treat rugs, carpets, drapes and other fabrics as staining may result. Avoid application to structural surfaces where visible spray residue and water stains are objectionable.

FOREST INSECT CONTROL

Recommended dosages refer to package of SEVIN 20-W to be applied per acre by aircraft. Keep spray mixtures well agitated. Addition of 4 ounces of sticker per gallon of spray improves residual control of cankerworm and gypsy moth.

EASTERN HARDWOODS, HEMLOCKS, PINES AND SPRUCES

For gypsy moth, use 1 package in water to make 1 gallon. Apply at the rate of 1 gallon per acre. Apply when larvae are in first 3 instars. Best results are obtained if application can be delayed until leaves are 1/3 to 1/2 grown.

ASPEN

For control of the Great Basin tent caterpillar, use 1 package in fuel oil to make one gallon. Apply at the rate of 1 gallon per acre. Apply when most larvae are in first 3 instars.

BURCH MAPLES AND OTHER NORTHERN HARDWOODS

For control of the Saddle Prominent in the Northeastern United States, use 1 package in water to make 1 gallon. Apply at the rate of 1 gallon per acre. Apply when larvae are in early instars.

CITRUS INSECT CONTROL

Recommended dosages refer to packages of SEVIN 20-W per 100 gallons of dilute spray. Keep spray mixtures well agitated. Spray only in full cover canopy. Do not apply less than 10 gallons of spray mixture per acre of trees.

ORANGE, LEMONS, LIME, GRAPES, PEACHES, PLUMS, APRICOTS, PEAR, QUINCE, WALNUTS, AND HYDRANGEAS OF THESE.

Use 1 package for California orange leaf-miner, citrus cutworm, citrus leaf roller, orange tortrix and western tussock moth. Use 1 package for black scale, brown soft scale, California red scale, oleander scale, citrus red scale and yellow scale. May be used with petroleum oil emulsion in control of scale insects. Do not apply within 5 days of harvest of tree crops.

LAWN AND GOLF COURSE CONTROL

Recommended dosages refer to package of SEVIN 20-W per 100 gallons of dilute spray. Keep spray mixtures well agitated. Apply for full control of lawn and golf course insects or when insects or their damage appear. Water thoroughly after applications.

GRASSES, TURFCOBS AND BERTARNS

Use 1 package for codling moth, cutworm beetles, green and black vine weevils, beetle, band is moth, June beetle, European spruce sawfly, spruce sawfly, oriental fruit moth, pear and big worm, pear leaf miner, pear leaf miner, fruit tree leaf roller, red-banded leaf roller, European spruce sawfly, European spruce sawfly, tussock moth, European scale, and rose scale and other scales. For scale control, apply when crawlers are present. For other insects, spray limbs and trunk thoroughly, evenly during daylight.

Do not apply within 1 day of harvest of peaches.
Do not apply within 3 days of harvest of apricots and nectarines.

PLUMS, PRUNES AND CHERRIES

Use 1 package for black cherry aphid, mealy plum aphid, cherry fruit fly, cherry leafhopper, eye-spotted bud moth, fruit tree leaf roller, red-banded leaf roller, Japanese beetle, lesser peach tree borer, peach twig borer, plum curculio, prune leafhopper, brown soft scale, Forbes scale, Lecanium scales, Byrrhichell scale and San Jose scale. For ootheca scale control apply when crawlers are present. For lesser peach tree borer control, spray limbs and trunk thoroughly, weekly during moth flight. Use 1 package for eastern tent caterpillar, codling moth, orange tortrix, and tussock moth.

Do not apply within 1 day of harvest of these crops.

OLIVES

Use 1 package with 1½ gallons of summer oil, in sprays for olive scale control. For ootheca scale control apply when crawlers are present. A maximum of 2 applications is permitted.

SMALL FRUIT INSECT CONTROL

Recommended dosages refer to packages of SEVIN 80-W per acre. Use sufficient spray gallonage to obtain full coverage. Keep spray mixtures well agitated. Apply when insects or their damage appear. Repeat at 7 to 10-day intervals or as necessary.

BLUEBERRIES

Use 1 to 2 packages for blueberry maggot, cherry and cranberry fruitworms, European fruit lecanium and Japanese beetle. Apply 3 weeks before harvest and repeat 10 days later or as necessary. A dilute spray of 125 to 150 gallons per acre is suggested.

CRANBERRIES

Use 1 to 3 packages for cutworms, fireworms, fruitworms, Japanese beetle and leafhoppers. Apply in late bloom and as needed at 7 to 10-day intervals. A dilute spray of 300 gallons per acre is suggested.

STRAWBERRIES

Use 1 to 2 packages for meadow spittlebug, strawberry leaf roller and strawberry weevil. A dilute spray of 100 to 200 gallons per acre is suggested. Do not apply within 1 day of harvest.

BLACK BERRIES, BOYBERRIES, RASPBERRIES, LOGANBERRIES AND RASPBERRIES

Use 2 packages for Jay nose beetle, leaf rollers, leafhoppers and raspberry aphid. A dilute spray of 100 to 200 gallons per acre is suggested. Do not apply within 7 days of harvest of these crops.