

Pure Pool™

DRY CHLORINE CONCENTRATE For Swimming Pools

- Keeps pools clear-clean.
- Built in chlorine stabilizer.
- Economical and easy to use.

WARNING

- **Caution:** Contact with organic matter may cause fire.
- **Will burn** with evolution of chlorine or equally toxic gases.
- **Avoid contact** with skin and eyes.
- **Avoid breathing dust.**
- **Do not take internally.**
- **In case of contact,** immediately flush skin or eyes with plenty of water for at least 15 minutes; for eyes, get medical attention.

POISON

KEEP OUT OF THE REACH OF CHILDREN

Active Ingredient: Sodium Dichloro-s-Triazinetrione 100%

Do not reuse container. Destroy when empty.



THOMPSON-HAYWARD
CHEMICAL COMPANY



USDA REG. NO. 148-851

98-500

HOW TO USE

1. Initially the pool water should be conditioned with CHLORINE STABILIZER according to label directions.
2. Add 2 ounces of DRY CHLORINE CONCENTRATE per 10,000 gallons of pool water every other day, or more frequently if needed to maintain a minimum chlorine residual of 0.6 ppm as determined by the use of a chlorine test kit. Plastic cup inside package holds 2 ounces. DRY CHLORINE CONCENTRATE is completely soluble and may be added directly into the deep area of the pool.
3. Super chlorinate every 2 weeks when temperature is below 80°F, or every week when above 80°F, by adding about 5 times the normal rate of DRY CHLORINE CONCENTRATE. Apply after bathers have left the pool and do not use pool until the chlorine residual has dropped to 1.0 ppm as determined by the use of a chlorine test kit.
4. Maintain pH of pool water between 7.2-7.6. Use reliable test kit and check pH only when the chlorine residual is less than 0.8 ppm to avoid a false reading.

ACCEPTED
OCT 14 1970
UNDER THE FEDERAL INSECTICIDE
FUNCTIONAL ACT
148-851

148-851

DRY CHLORINE CONCENTRATE

For Swimming Pools

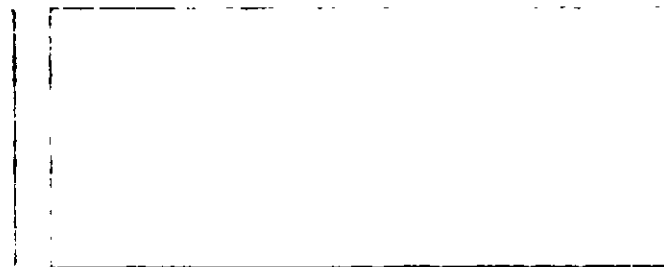
- Keeps pools clear clean
- Built in chlorine stabilizer
- Economical and easy to use.

WARNING

- Do not breathe dust or fumes.
- Wash hands after use.
- Avoid contact with skin.
- Do not get in eyes.
- If you get it in your eyes, flush with water for 15 minutes.
- If you get it on your skin, wash with water.

POISON.

Keep out of reach of children.



...n. • Built in chlorine stabilizer.
...ical and easy to use.

WARNING

...ct with organic matter may cause fire.
...n of chlorine or equally toxic gases.
...n and eyes.

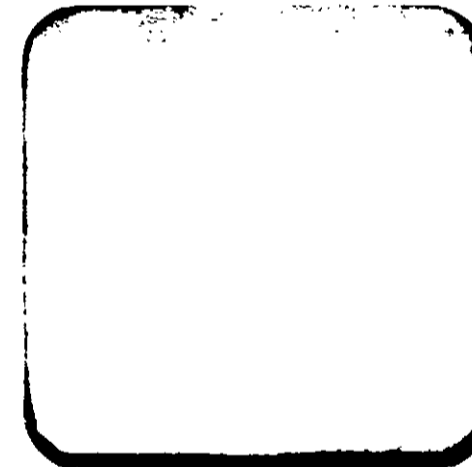
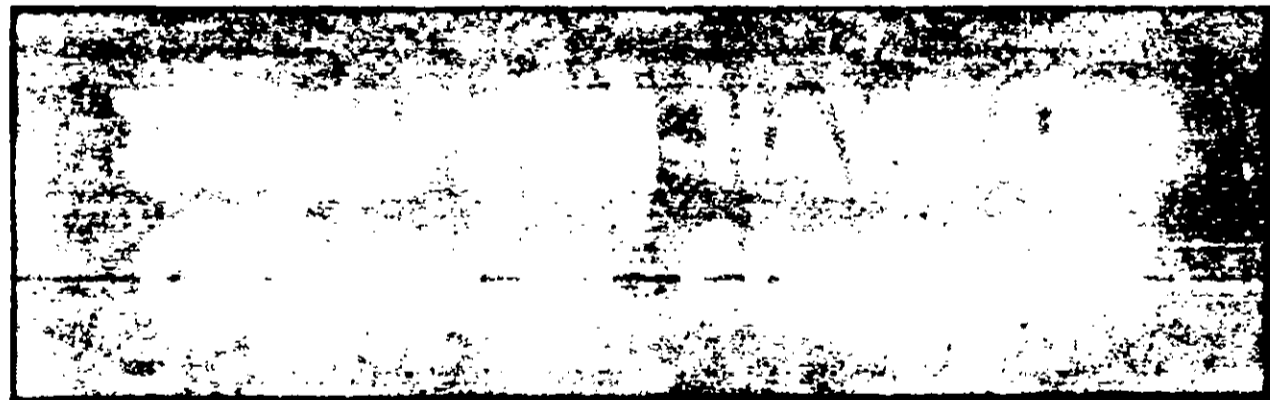
...mediately flush skin or eyes with plenty
...15 minutes; for eyes, get medical

POISON

...HE REACH OF CHILDREN

Dichloro-s-Triazinetrione 100%
...ainer. Destroy when empty.

2. Add 2 ounces of DRY CHLORINE CONCENTRATE per 10,000 gallons of pool water every other day, or more frequently if needed to maintain a minimum chlorine residual of 0.6 ppm as determined by the use of a chlorine test kit. Plastic cup inside package holds 2 ounces. DRY CHLORINE CONCENTRATE is completely soluble and may be added directly into the deep area of the pool.
3. Super chlorinate every 2 weeks when temperature is below 80°F, or every week when above 80°F, by adding about 5 times the normal rate of DRY CHLORINE CONCENTRATE. Apply after bathers have left the pool and do not use pool until the chlorine residual has dropped to 1.0 ppm as determined by the use of a chlorine test kit.
4. Maintain pH of pool water between 7.2-7.6. Use reliable test kit and check pH only when the chlorine residual is less than 0.8 ppm to avoid a false reading.



KANSAS CITY, KANSAS 66110

USDA REG. NO. 100-100-100
... at 10

APPROVED

OCT 14, 1970

DRY CHLORINE CONCENTRATE

For Swimming Pools

- Keeps pools clear-clean.
- Built in chlorine stabilizer.
- Economical and easy to use.

WARNING

- Oxidizing material-Contact with organic matter may cause fire.
- Will burn with evolution of chlorine or equally toxic gases.
- Avoid contact with skin and eyes.
- Avoid breathing dust.
- Do not take internally.
- In case of contact, immediately flush with plenty of water for at least 15 minutes. For eyes, get medical attention.

POISON

KEEP OUT OF THE REACH OF CHILDREN

HOW TO USE

1. Initially the pool water should be conditioned with CHLORINE STABILIZER according to label directions.
2. Add 2 ounces of DRY CHLORINE CONCENTRATE per 10,000 gallons of pool water every other day, or more frequently if needed to maintain a minimum chlorine residual of 0.6 ppm as determined by the use of a chlorine test kit. Plastic cup inside package holds 2 ounces. DRY CHLORINE CONCENTRATE is completely soluble and may be added directly into the deep area of the pool.
3. Super-chlorinate every 2 weeks when temperature is below 80°F, or every week when above 80°F, by adding about 5 times the normal rate of DRY CHLORINE CONCENTRATE. Apply after bathers have left the pool and do not use pool until the chlorine residual has dropped to 1.0 ppm as determined by the use of a chlorine test kit.
4. Maintain pH of pool water between 7.2-7.6 by using reliable test kit and check pH only when the chlorine residual is less than 0.3 ppm to avoid a false reading.

MADE IN U.S.A. BY KANSAS CHEMICAL