



DIRECTIONS FOR USE

FOR EARLY-SEASON THRIPS, FLEA BEETLES AND COTTON FLEA-HOPPER. ALSO FOR COTTON LEAFWORM AND STRIPED BLISTER BEETLE:

Apply 7 to 14 pounds per acre on appearance of insects.

FOR MID- AND LATE-SEASON BOLL WEEVIL, BOLLWORM, FALL ARMY-WORM, COTTON LEAF PERFORATOR, LEAF ROLLERS, LEAFHOPPERS AND TARNISHED PLANT BUG. ALSO FOR LIGHT-TO-MODERATE INFESTATIONS OF LYGUS BUGS IN WESTERN IRRIGATED COTTON.

Apply 14 to 27 pounds per acre, depending on the size of the cotton and insect population level. Applications for boll weevil should be made every five to seven days as long as control is necessary.

FOR PINK BOLLWORM: Apply 20 to 23 pounds per acre on a five to seven day schedule depending on the size of the cotton and degree of infestation.

FOR STINK BUGS AND SALT-MARSH CATERPILLAR: apply 27 pounds per acre as needed.

FOR GRASSHOPPERS: Apply 7 to 20 pounds per acre on appearance of insects and their feeding damage. The highest dosage should be used when grasshoppers are mature or material is applied on partly defoliated plants.

APHID populations will be suppressed by repeated applications of this insecticide.

SEVIN does not control spider mites. Where infestations are encountered, use a recommended miticide.

SEVIN may be applied after bolls open. Allow 7 days between last application and grazing treated fields or harvesting crop residue for use as feed or bedding for dairy or meat animals.

For protection of honeybees avoid use, if possible, during periods when honeybees are visiting the crop. When necessary to use during such periods, warn beekeepers well in advance to locate hives at a safe distance until one week after application.

Do not reuse empty container. Destroy by burying with waste or burning. Stay away from smoke or fumes.

HANDLING PRECAUTIONS

CAUTION: HARMFUL IF INHALED OR SWALLOWED. Do not breathe Dust. Do not take internally. Avoid prolonged breathing of Dust. Skin Contact May be Harmful. Avoid contact. Wash hands before eating. Take shower or bath after work. Wear regular long sleeved work clothing. Change to clean clothing daily. NOTE FOR PHYSICIAN: Carbaryl is a moderate reversible cholinesterase inhibitor. Atropine is antidotal. KEEP OUT OF REACH OF CHILDREN AND ANIMALS.

DE-PESTER®

**COTTON DUST
7.5 - 0 - 0**

SEVIN*

CAUTION Keep Out of Reach of Children

SEE SIDE PANEL FOR ADDITIONAL CAUTIONS.

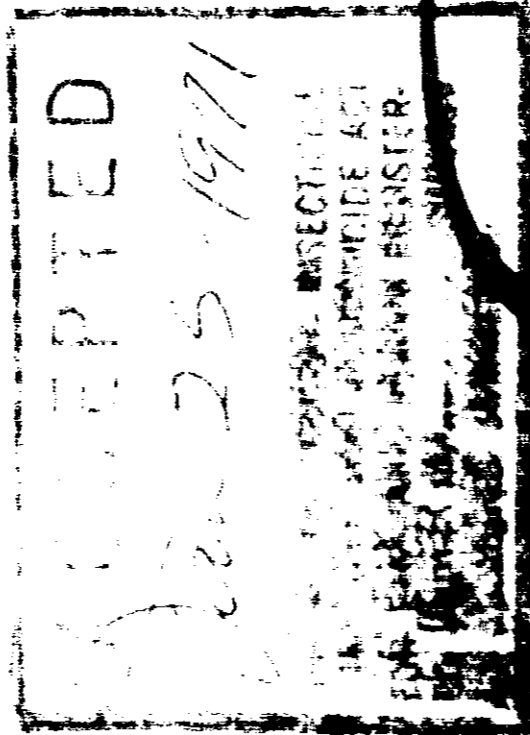
FOR THE CONTROL OF INSECTS ON COTTON

ACTIVE INGREDIENT:

Carbaryl (1-naphthyl N-Methylcarbamate)..... 7.5% by wt.
INERT INGREDIENTS..... 92.5% by wt.

* Trade Mark of Union Carbide Corporation for the active ingredient, 1-naphthyl N-methylcarbamate.

U.S. Pat. No. 2,903,478



748-586