




U.S. Reg. No. 134-52

2 1/2 POUNDS NET

Cattle
**LOUSE
 POWDER**



*A Ciodrin[®] Insecticide Dust
 for Direct Application to
 Dairy and Beef Cattle*

ACTIVE INGREDIENTS

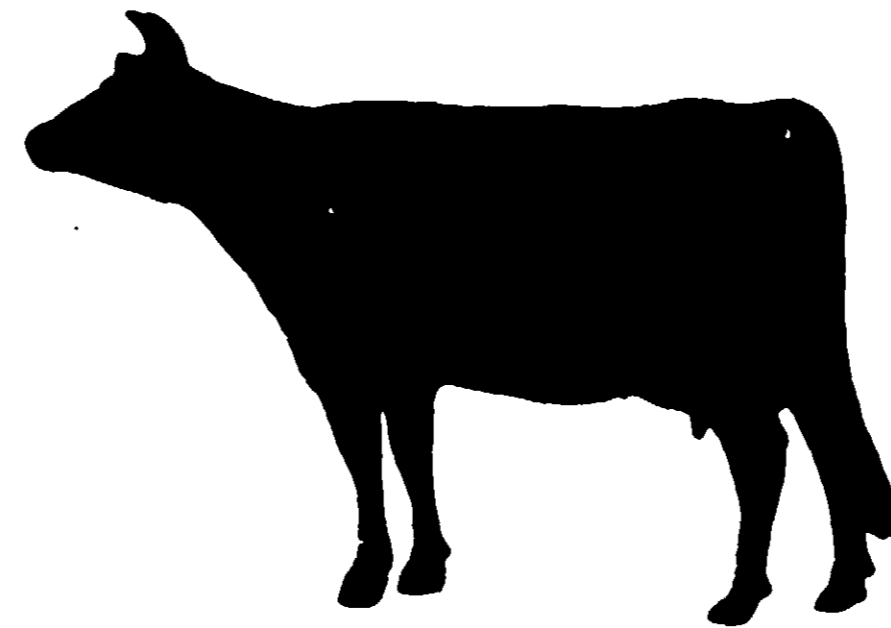
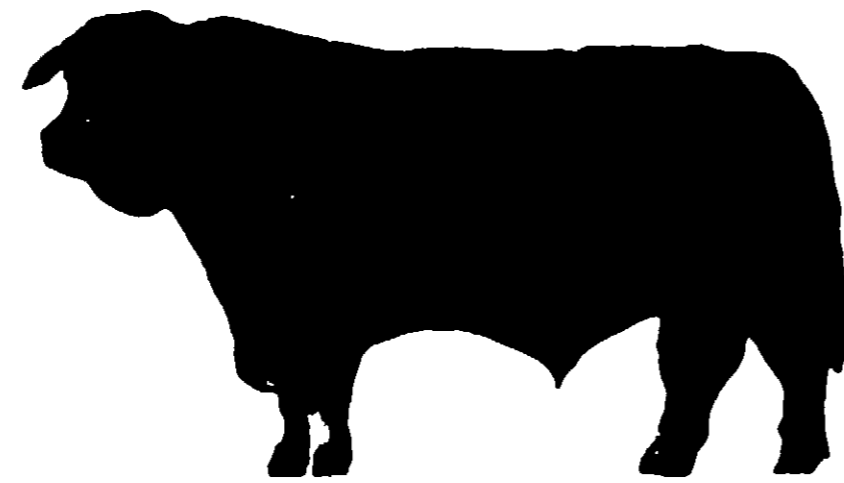
Dimethyl Phosphate of Alpha-Methylbenzyl 3-hydroxy-cis-crotonate	3.0%
--	------

INERT INGREDIENTS

97.0%
Total 100.0%

® Ciodrin Insecticide
MANUFACTURED BY

division of richardson-merrell inc.



Hess & Clark Cattle Louse Powder is a specially prepared, ready to use livestock dusting powder suitable for use in conventional hand and power dusters. No feed-off period is required when used on animals being milked or fed for slaughter. Do not treat calves under 6 months of age. Brahman cattle should not be treated as they may show hypersensitivity to organic phosphates.

For the control of lice on dairy and beef cattle, treat animals thoroughly. If required, repeat this treatment application in 3-4 weeks. Wash animals thoroughly after use.

Hess & Clark makes no warranty of merchantability, fitness for any purpose or otherwise, expressed or implied, concerning this product or its uses, which extend beyond the use of the product under normal conditions, in accord with the statements contained on the label.

AVOID PROLONGED OR REPEATED inhalation of dust and contact with skin or eyes. flush with plenty of water; for eyes, get medical attention. Keep away from open flame. Wash thoroughly with soap and water after handling and before eating or smoking.

do not contaminate feed, water, or foodstuffs.

do not contaminate any body of water by direct application, cleaning of equipment, disposal of wastes or containers.

do not induce vomiting immediately and get medical attention. Atrophine is antidotal.

do not reuse for any purpose. Destroy container by burning or burying in an isolated area. If burned, keep out of smoke.