



**DISINFECTANT, SANITIZER,
AND DEODORIZER**

EPA Registration No. 116-16-AA

EPA Est. 116-1A-1

ACTIVE INGREDIENTS:

n-Alkyl (C₁₄, 60%; C₁₆, 30%; C₁₂, 5%; C₁₈, 5%)

dimethylbenzyl ammonium chloride

Isopropanol

INERT INGREDIENT: Water

This product fulfills the criteria of Appendix F of the Grade "A" Pasteurized Milk Ordinance 1965 Recommendations of the U.S. Public Health Service in waters up to 550 ppm of hardness calculated as CaCO₃ when tested by the AOAC Germicidal and Detergent Sanitizer—Official Method.

DANGER: Keep Out of Reach of Children
(See antidote statement and other precautions on back panel)

SALSBURY LABORATORIES

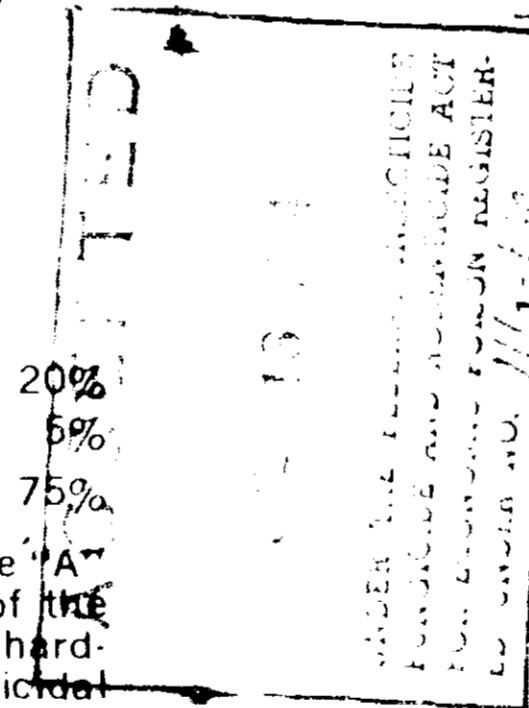
Charles City, Iowa 50616

1 QUART LIQUID, U.S.

(32 FLUID OZ.)
(Metric equiv.: 0.946 liter)

LIST NO. 1891

Number refers to single quart.
(Case lot: 12 1-qt. bottles)



PURPOSE	DILUTION	DIRECTIONS
General Disinfectant		
Ordinary surface	½ cup per 15 U.S. gal. water or 1 tablespoonful per 2 gal. (400 ppm)	For use in poultry and livestock buildings and equipment; for homes and public buildings. Thoroughly clean all surfaces before spraying or brushing with Germex. If soap is used, rinse thoroughly before disinfecting.
Porous surface or area difficult to clean	¾ cup per 10 U.S. gal. water (800 ppm)	
SPECIAL DIRECTIONS: In poultry houses and livestock buildings. 1. remove all poultry or animals, all feedstuffs, trucks, coops, crates, etc., from the premises. 2. empty all troughs, automatic feeders, and other feeding and watering equipment; 3. remove droppings or manure from floors, walls, and surfaces of facilities normally occupied or traversed by poultry or animals. 4. remove all litter. 5. saturate all surfaces including equipment, with Germex solution. 6. immerse in the solution all halters, ropes, and other types of equipment used in handling animals. 7. ventilate buildings, coops, and other closed spaces. 8. do not rehouse poultry or livestock, and do not reuse equipment, until the Germex solution has dried or set or been absorbed, and 9. rinse thoroughly with clean, drinkable water, all treated feed troughs, racks, waterers, mangers, and other equipment before reuse.		

PURPOSE	DILUTION	DIRECTIONS
Farrowing Swine	1 tablespoonful per 4 U.S. gal. water (200 ppm)	Before farrowing, apply the lukewarm solution over all areas of udder and flanks, rinse thoroughly.
Dipping Hatching Eggs	½ cup per 30 U.S. gal. water or 1 tablespoonful per 4 gal. (200 ppm)	To reduce surface contamination, dip eggs in solution at 110° to 120°F. before placing them in incubator.

Sanitizing Meat- and Poultry-processing Utensils and Equipment	1 cup per 60 U.S. gal. water or 1 tablespoonful per 4 gal. (200 ppm)	Pre-cleanse utensils and equipment. Then, immerse utensils for at least 2 minutes or for contact time specified by governing sanitary code. Place sanitized utensils on a rack or drainboard to dry without rinse.
--	--	--

DANGER: Keep Out of Reach of Children. **Corrosive.** Causes severe eye and skin damage. Do not get in eyes, on skin, or on clothing. Wear goggles or face shield and rubber gloves when handling product. Harmful or fatal if swallowed. Avoid contamination of food.

FIRST AID: In case of contact, immediately flush eyes or skin with plenty of water for at least 15 minutes. For eyes, call a physician. Remove and wash contaminated clothing before reuse.

If swallowed, drink promptly a large quantity of milk, egg whites, gelatin solution or, if these are not available, drink large quantities of water. Avoid alcohol. Call a physician immediately.

NOTE TO PHYSICIAN: Probable mucosal damage may contraindicate the use of gastric lavage. Measures against circulatory shock, respiratory depression, and convulsion may be needed.

IMPORTANT: RINSE EMPTY CONTAINER THOROUGHLY WITH WATER AND DISCARD IN A SAFE PLACE OR ACCORDING TO REGULATIONS.

STORE ABOVE 32 F (0 C)
LOT NUMBER STAMPED ON BOTTLE

Made in U.S.A.

9 1891 674