



UNITED STATES ENVIRONMENTAL PROTECTION AGENCY
WASHINGTON, DC 20460

OFFICE OF CHEMICAL SAFETY
AND POLLUTION PREVENTION

March 30, 2020

JORDAN MOSELEY
REGULATORY SPECIALIST
SYNGENTA PROFESSIONAL SOLUTIONS
SYNGENTA CROP PROTECTION, LLC
P.O. BOX 18300
GREENSBORO, NC 27419

Subject: Label Amendment – Revise Environmental Hazards Language
Product Name: DIQUAT/FLUAZIFOP-P-BUTYL/DICAMBA ME RTU
EPA Registration Number: 100-1345
Application Date: 01/24/2020
Decision Number: 559858

Dear Mr. Moseley:

The amended label referred to above, submitted in connection with registration under the Federal Insecticide, Fungicide and Rodenticide Act, as amended, is acceptable. This approval does not affect any conditions that were previously imposed on this registration. You continue to be subject to existing conditions on your registration and any deadlines connected with them.

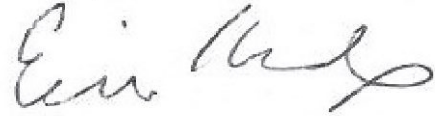
A stamped copy of your labeling is enclosed for your records. This labeling supersedes all previously accepted labeling. You must submit one copy of the final printed labeling before you release the product for shipment with the new labeling. In accordance with 40 CFR 152.130(c), you may distribute or sell this product under the previously approved labeling for 18 months from the date of this letter. After 18 months, you may only distribute or sell this product if it bears this new revised labeling or subsequently approved labeling. "To distribute or sell" is defined under FIFRA section 2(gg) and its implementing regulation at 40 CFR 152.3.

Should you wish to add/retain a reference to the company's website on your label, then please be aware that the website becomes labeling under the Federal Insecticide Fungicide and Rodenticide Act and is subject to review by the Agency. If the website is false or misleading, the product would be misbranded and unlawful to sell or distribute under FIFRA section 12(a)(1)(E). 40 CFR 156.10(a)(5) list examples of statements EPA may consider false or misleading. In addition, regardless of whether a website is referenced on your product's label, claims made on the website may not substantially differ from those claims approved through the registration process. Therefore, should the Agency find or if it is brought to our attention that a website contains false or misleading statements or claims substantially differing from the EPA approved registration, the website will be referred to the EPA's Office of Enforcement and Compliance.

Page 2 of 2
EPA Reg. No. 100-1345
Decision No. 559858

Your release for shipment of the product constitutes acceptance of these conditions. If these conditions are not complied with, the registration will be subject to cancellation in accordance with FIFRA section 6. If you have any questions, please contact Francisco Llarena-Arias by phone at 703-347-0459, or via email at llarena-arias.francisco@epa.gov.

Sincerely,

A handwritten signature in black ink, appearing to read "Erik Kraft". The signature is fluid and cursive, with a large initial "E" and a long, sweeping tail.

Erik Kraft, Product Manager 24
Fungicide and Herbicide Branch
Registration Division (7505P)
Office of Pesticide Programs

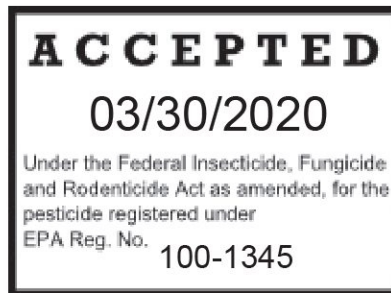
Enclosure

[Master]

Diquat/Fluazifop-P-Butyl/Dicamba ME RTU

[Herbicide]

[Weed and Grass Killer]



Active Ingredients:	
Diquat dibromide:	0.20%
Fluazifop-P-butyl:	0.07%
Dicamba, Dimethylamine salt:	0.05%
<hr/>	
Other Ingredients:	99.68%
Total:	100.00%

KEEP OUT OF REACH OF CHILDREN.

CAUTION

See additional precautionary statements and directions for use in booklet.

EPA Reg. No. 100-1345

EPA Est. No.

[Superscript is first letter of lot number]

Net Contents

FIRST AID

Have the product container or label with you when calling a poison control center or doctor, or going for treatment. [You may also contact 1-800-888-8372 for emergency medical treatment information.]

HOT LINE NUMBER

For 24 Hour Medical Emergency Assistance (Human or Animal) [or Chemical Emergency Assistance (Spill, Leak, Fire, or Accident),] Call 1-800-888-8372

PRECAUTIONARY STATEMENTS

Hazards to Humans and Domestic Animals**CAUTION**

Wash thoroughly with soap and water after handling and before eating, drinking, chewing gum, using tobacco, or using the toilet. Prolonged or frequently repeated skin contact may cause allergic reactions in some individuals.

Environmental Hazards

This pesticide is toxic to aquatic invertebrates. To protect the environment, do not allow pesticide to enter or run off into storm drains, drainage ditches, gutters or surface waters. Applying this product in calm weather when rain is not predicted for the next 24 hours will help to ensure that wind or rain does not blow or wash pesticide off the treatment area.

CONDITIONS OF SALE AND DISCLAIMERS OF WARRANTY AND LIMITATIONS OF LIABILITY

NOTICE: Read the entire Directions for Use and Conditions of Sale and Disclaimers of Warranty and Limitations of Liability before buying or using this product. If the terms are not acceptable, return the product at once, unopened, and the purchase price will be refunded.


Syngenta warrants that this product conforms to the chemical description on the label and is reasonably fit for the purposes stated in the Directions for Use, when used in accordance with the directions under normal use conditions. You assume any and all risk of using, storing, or handling this product contrary to label instructions, or under abnormal conditions or conditions not reasonably foreseeable to Seller or Syngenta. **TO THE EXTENT CONSISTENT WITH APPLICABLE LAW, NEITHER SYNGENTA NOR SELLER MAKE ANY WARRANTY OF MERCHANTABILITY NOR ANY OTHER EXPRESS OR IMPLIED WARRANTIES EXCEPT AS STATED ABOVE.**

To the extent consistent with applicable law, in no event shall Syngenta or Seller be liable for any incidental, consequential, or special damages resulting from the use, storage, or handling of this product.



[NOTICE: To the extent consistent with applicable law, buyer assumes all risks of use, storage or handling of this product not in accordance with directions.]

DIRECTIONS FOR USE

It is a violation of Federal law to use this product in a manner inconsistent with its labeling.

- Read entire label before using this product.
-  People and pets may re-enter after the treated area has been allowed to dry.

USE RESTRICTIONS

- Do not apply this product in a way that will contact any person or pet either directly or through drift.
- Only persons applying this product may be in the area during application.
- Keep people and pets out of the area during application. 
-  Do not allow people or pets to enter the treated area until sprays have dried.
- Do not mow, cut, or disturb treated vegetation for at least 7 days following application.
- Do not use on or around food or feed crops.
- Do not apply more than 1 gallon of product per 350 sq ft in a single application. 1 gallon of product contains 0.0166 lb diquat dibromide, 0.0056 lb fluazifop-p-butyl, 0.0044 lb dicamba.
- Do not apply more than 2 gallons of product per 350 sq ft per year (2 applications of 1 gallon). 2 gallons of product contain 0.0332 lb diquat dibromide, 0.0112 lb fluazifop-p-butyl, 0.0088 lb dicamba.
- If retreatment is necessary, wait 28 days before making a second application.
- Do not make more than 2 broadcast applications per year.

HOW IT WORKS

The dual action of Diquat/Fluazifop-P-Butyl/Dicamba ME RTU/this product kills all types of weeds and grasses. One ingredient works on contact with visible results within hours. The other two ingredients are absorbed and move within the plant, penetrating deep to kill down to the root.

WHERE TO USE

- Around perennial landscape plants, shrubs, or trees
- Patios, walkways, driveways
- Gravel or mulch beds
- Along fences, around buildings
- Preparing landscaped areas
- Lawn renovation

SPRAYER DIRECTIONS

NOTE TO PM: For all Options below Graphics illustrating a step or group of steps may appear on final printed label

OPTION 1 - [Trigger Sprayer Directions]

- Twist nozzle tip to adjust the spray pattern.
- Spray according to directions – See *How to Apply*.
- When done spraying, turn nozzle to “OFF” position.]

OPTION 2 - [Trigger Sprayer Directions – Small RTU]

[Applicator (Device) (Applicator Name) Directions/Instructions]

[HOW TO USE/APPLY:]

[Spray]

1. Turn/ adjust sprayer nozzle to desired spray [setting].
2. [Squeeze trigger repeatedly [to spray].]

[Finish]

1. [Turn sprayer nozzle to “OFF”/X]

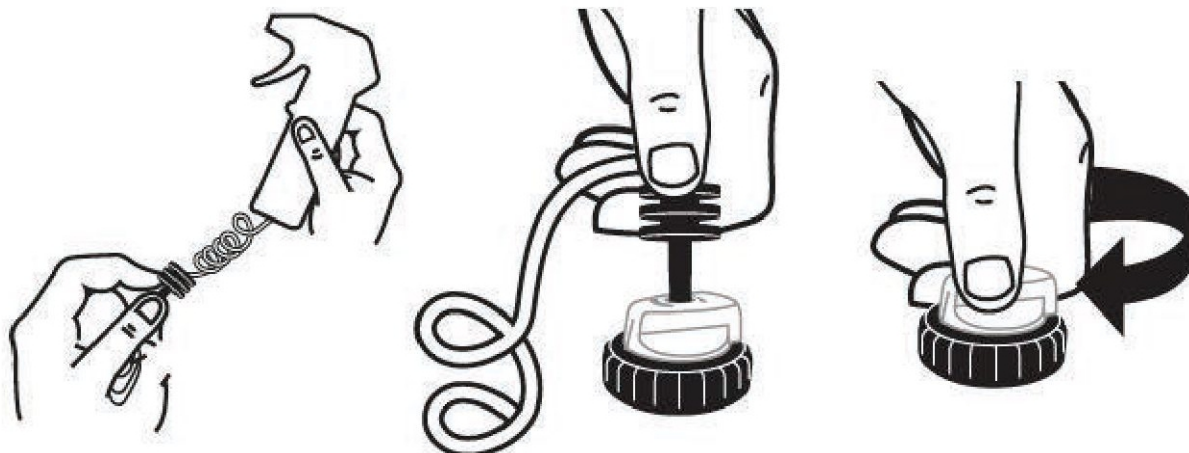
OPTION 3 - [Trigger Sprayer Directions – Large RTU]

[Applicator (Device) (Applicator Name) Directions/Instructions]

[HOW TO USE /APPLY:]

[Spray]

1. Remove sprayer/Applicator Name from bottle/holster/holder by sliding [pulling] sprayer up.
2. Unwrap/uncoil hose and insert [[color] hose connector] into [color] spout /knob/ opening/lid on bottle/cap/knob/lid/opening [until it clicks].
3. [Flip up [color] spout until fully upright] [Twist/turn spout/knob to “ON”] [Pull spout up].
4. Turn sprayer nozzle to desired spray [pattern/setting].
5. Squeeze trigger repeatedly [to spray].



[Finish]

1. Turn/twist sprayer nozzle to “OFF” [X].
2. [Push/turn/twist cap/knob/spout to “OFF” [X]/[Flip spout closed.]
3. **[DO NOT DISCONNECT HOSE CONNECTOR FROM SPOUT/CAP/KNOB/OPENING].**
4. Place sprayer back into [holster] holder/clip/lug/side of bottle.

OPTION 4 - Directions for EZ Pull and Apply™ Sprayer

- Remove sprayer and hose from side carrier.
- Insert plug at end of hose into spout on cap *until it clicks* into place.
- Flip up spout.
- Grasp sprayer by the handle and point away from body.
- Slowly pull the ring at the bottom of the spray handle.
- Twist nozzle tip to adjust the spray pattern.
- Press and hold button on the sprayer to begin spraying.
- Pull ring at bottom of sprayer as needed to continue spraying.
- Spray according to directions – See *How to Apply*.

OPTION 5 – Directions for Pull ‘N Spray® II

[Applicator (Device) (Applicator Name) Directions/Instructions]

[HOW TO USE/APPLY:]

[Spray]

1. Remove sprayer/Applicator Name from bottle/holster/holder [by sliding/pulling sprayer up].
2. Unwrap/uncoil hose and insert [[color] hose connector] into [color] spout/knob.opening/lid on bottle cap/knob/lid/opening [until it clicks].
3. [Flip up [color] spout until fully upright] [Twist/turn spout/knob to “ON”] [Pull spout up].
4. Turn sprayer nozzle to desired spray [pattern/setting].
5. Point sprayer away from body. Slowly pull ring at bottom of sprayer until it stops, and hold for two [2] seconds to fill sprayer.
6. Press trigger to spray.

[Finish]

1. Turn/twist sprayer nozzle to “OFF” [X].
2. [Push/turn/twist cap/knob/spout to “OFF” [X] /Flip spout closed.]
3. **[DO NOT DISCONNECT HOSE CONNECTOR FROM SPOUT/CAP/KNOB/OPENING.]**
4. [Place sprayer back into [holster] holder/clip/lug/side of bottle.]

OPTION 6 – Directions for Pump ‘N Go® 2 Sprayer

Instructions for Printing on the Wand and Handle:

Wand: [Insert Arrow Graphic]  SPRAY POSITION **Handle:** [Insert Arrow Graphic]  RELEASE PRESSURE AFTER USE Push handle to cap & turn. RETIGHTEN.

[HOW TO ASSEMBLE AND USE INSTRUCTIONS]

1. **CUT** Carefully cut the zip ties securing the hose and pump handle with scissors. Use caution not to cut the [Insert Color] hose.
2. **CONNECT** Unwind hose. Firmly push the connector at the end of the hose onto the spout on the pump, until it locks into place.
3. **EXTEND WAND** Lift sprayer wand off bottle. Push [Insert Color] button while pulling out on the wand nozzle tip. Fully extend wand until [Insert Color] button snaps into SPRAY POSITION. **NOTE:** Trigger will not function until wand is fully extended and [Insert Color] button is visible in the SPRAY POSITION.
4. **PUMP** Make sure handle is screwed on **tightly** or the bottle will not pressurize. Pump container [Insert Number of Pumps to Prime X-X] times to pressurize bottle. A full bottle requires fewer pumps than an empty bottle. Pumping to the higher range will provide longer spray duration. After pumping, push pump down and turn handle clockwise to lock into carrying position. **NOTE:** This bottle is designed to expand under pressure and cannot be over-pressurized.

5. SPRAY Aim wand. Spray by pushing down trigger with thumb. Adjust spray pattern by rotating nozzle tip up to one-half rotation. Spray weeds [and grasses] until thoroughly wet.

6. STORE When finished spraying, push the [Insert Color] button and retract the wand until the [Insert Color] button snaps back into the original storage position. Place wand back onto [the top of] the bottle [in the integrated holster] with nozzle [facing down/ tip extended through the eyelet opening].

7. DEPRESSURIZE Push pump handle all the way down and turn pump handle and cap counter-clockwise to relieve pressure, then retighten to store.

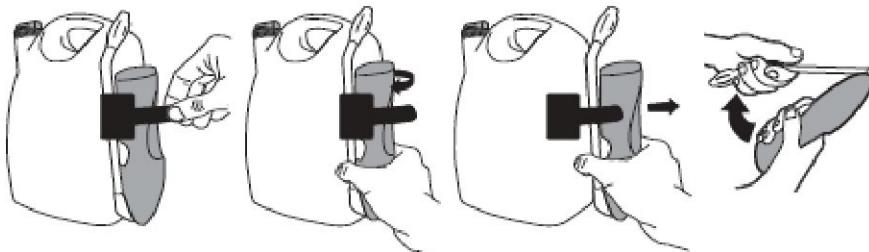
OPTION 7 – Directions for Battery Powered Wand

[[Applicator Name] [Applicator/Wand] Directions]

[HOW TO USE /APPLY:]

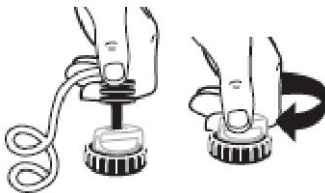
[Prep [Wand]]

1. Remove sprayer [Applicator Name] from [holder] holster/clip/lug/side of bottle.
2. [Remove [color] pull strip to activate batteries].
3. Unfold [Flip Open] [Applicator Name] [wand] until it clicks/locks into position.



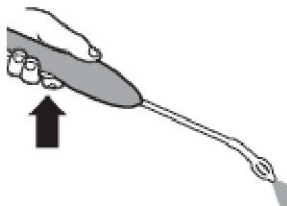
[Connect]

1. Unwrap/uncoil hose and insert [[color] hose connector] into [color] spout/knob/opening/lid on [bottle] cap [until it clicks].
2. [Flip up [color] spout/knob until fully upright.] [Twist/turn spout/knob to “ON”.] [Pull spout up].



[Spray]

1. Turn sprayer nozzle to desired spray [pattern].
2. [Slide [color] switch on trigger to Unlock/lock].
3. Press trigger to spray.



[Finish]

1. Turn [sprayer] nozzle to “OFF” [X].
2. [Slide [color] switch on trigger to “Lock” [illustration]].
3. [Push/turn/twist cap/knob/spout to “OFF” [X]/[Flip spout closed].
4. Fold [Applicator Name] wand closed and place sprayer back in [holder] clip/lug/side of bottle.

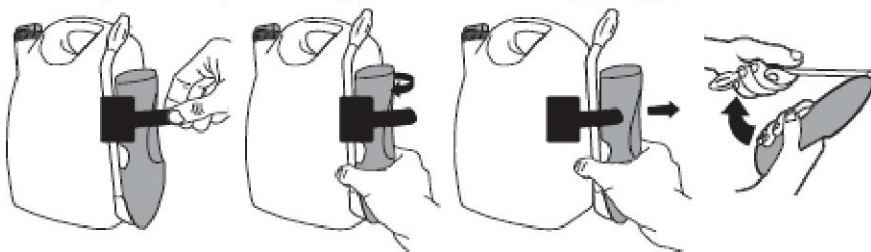
Important Use Information: DO NOT submerge in water. When storing sprayer for long periods, remove batteries.

[To replace batteries: See marked diagram inside battery compartment.]

Option 8 – Directions for Battery Powered Wand

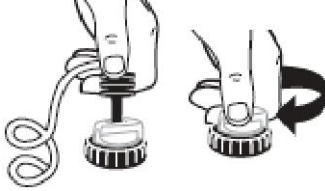
[Prep [Wand]]

1. Remove [Applicator Name/ sprayer] from [bottle/ holster/ holder] by [sliding/ pulling] sprayer up].
2. [Remove [insert color] pull strip to activate batteries.]
3. [Unfold/ Flip Open] [Applicator Name/ applicator/ wand] until it [clicks/ locks] into position.]
4. [Extend [wand/ applicator/ nozzle] [fully].]



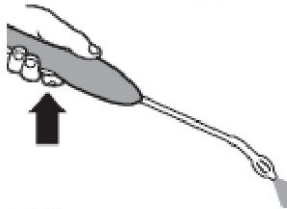
[Connect]

1. Unwrap/Uncoil hose and insert [insert color] hose connector into [insert color] (spout/ knob/ opening) on bottle cap [until it clicks].
2. Flip up [insert color] spout until fully upright. [Twist [spout/ knob] to “ON”.] [Pull spout up.]



[Spray]

1. Turn sprayer nozzle to [desired spray/ foam/ or/ fan setting] [“On”].
2. [Slide [insert color] switch on trigger to “Unlock” [insert illustration].]
3. Press trigger to spray.



[Finish]

1. [Turn nozzle to [“OFF”/ X].]
2. [Slide [insert color] switch on trigger to “Lock” [insert illustration].]
3. [Fold [Applicator Name/ wand/ applicator] closed [and place sprayer [wand] back in [holster/ holder].]

Option 9 – Directions for Battery Powered Wand

Wand Safety Sticker or Printed on the Handle: Always lock after use [Insert icons]

[HOW TO ASSEMBLE AND USE INSTRUCTIONS]


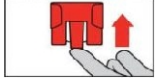
- 1. Remove** [Unsnap holder/ Twist left/ Pull]
 - Remove [wand/ Insert Applicator Name] from side clip.
 - Remove protective strip from battery compartment to activate batteries.
 - [Pull connector by slightly twisting from side clip and unwrap hose completely.]
- 2. Connect**
 - Insert [Insert Color] plug at end of hose into knob on cap. Turn knob to ON.]
 - [Remove protective shield from side clip and attach over nozzle.]
- 3. Extend**
 - Flip open [wand/ Insert Applicator Name] until it clicks and locks into position.
- 4. Spray**
 - Slide trigger lock on [wand/ Insert Applicator Name] handle to the unlocked position.
 - Twist nozzle to desired spray pattern.
 - [Use shield to cover the weeds or grasses you want to kill.]

- Point [wand/ Insert Applicator Name] nozzle away from body and hold [Insert Color] trigger for continuous spray.

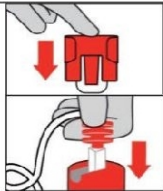
REFILL/REUSE DIRECTIONS

How to attach [applicator name] [wand] to [DIQUAT-FLUAZIFOP-P-BUTYL-DICAMBA ME RTU] Refill/Recharge/Renew/Fill-Up/Reload [DIQUAT-FLUAZIFOP-P-BUTYL-DICAMBA ME RTU] [refill bottle/container]:

Removing [[color] hose]/[Comfort Wand]/[Applicator Name] from original bottle/container:

	[Remove the [color] hose connector from the original bottle/container by pulling the [color] plug from the [color] spout on cap.
	[To remove the side holster [holder] from original bottle/container, pull [lift] the bottom tab underneath and slide the holster [holder] up.]

Adding [[color] hose]/[Comfort Wand]/[Applicator Name] to [DIQUAT-FLUAZIFOP-P-BUTYL-DICAMBA ME RTU] Refill/Recharge/Renew/Fill-Up/Reload][DIQUAT-FLUAZIFOP-P-BUTYL-DICAMBA ME RTU]:

	[Attach the sprayer holster [holder] to [DIQUAT-FLUAZIFOP-P-BUTYL-DICAMBA ME RTU] Refill/Recharge/Renew/Fill-Up/Reload] [DIQUAT-FLUAZIFOP-P-BUTYL-DICAMBA ME RTU][refill bottle/container] by sliding the holster [holder] down onto the knob.]
Insert [color] hose connector into [color] spout on cap until it clicks.	

Note to PM: The illustrations may or may not appear on the final printed label. The use of illustrations is dependent upon the size of the packaging.

Important Use Information: DO NOT submerge in water. When storing sprayer for long periods, remove batteries.

To Replace Batteries:

Open battery compartment at bottom of applicator. Remove used batteries and replace with new batteries. Securely close battery compartment door. Always use a complete set of the same type when replacing batteries. Best performance is achieved with alkaline batteries. Never mix alkaline, carbon-zinc or rechargeable batteries. Dispose of used batteries according to manufacturer's instructions or in household trash.

Option 10 – [Trigger Sprayer Directions – Quick Connect] [HOW TO ASSEMBLE AND USE INSTRUCTIONS]

1. Remove sprayer. Pull cord/tubing ALL THE WAY OUT.
2. Insert plug into knob opening on cap.
3. Turn knob to ON. Adjust nozzle to the desired spray setting.

HOW TO REFILL/ REFILL DIRECTIONS

For Ready-To-Use Containers with Applicators Intended to be Reused/ Refilled

To refill this empty container, pour product carefully and directly from the [Insert Brand Name for EPA# 100-1345] container designated as the ready-to-use refill container. **DO NOT** add water.

For Ready-To-Use Refill Containers

[Use this product to refill the empty [Insert Brand Name for EPA# 100-1345/ Insert Packaging Type] container by pouring product carefully and directly into the container. **DO NOT** add water. **DO NOT** reuse or refill this container.]

For Battery Operated Sprayers with Wand Containers

The [Insert Applicator Name/ wand] can be reused with the [Insert Brand Name for EPA# 100-1345] refill [bottle/ container]. Read and follow instructions in REFILL DIRECTIONS section to reuse the [Insert Applicator Name/ wand/ applicator].

HOW TO APPLY

- Shake gently before using.
- Spray only the weeds you want to kill. Thoroughly wet the foliage to cover but **DO NOT** spray to runoff.
- For best results, apply when weeds are actively growing and when the air temperature is above 60°F.
- **DO NOT** spray plants you desire to keep. You may use a cardboard or plastic shield to protect desirable plants from spray.
- Apply when air is calm to prevent drift to desirable plants.
- If desirable plants are accidentally sprayed, rinse them off immediately with plenty of water.

WHAT TO EXPECT

- Sprayed weeds begin to [wilt] [die] within hours after application, with complete kill within [days to] 1-2 weeks.
- A single application controls most [listed] weeds.
- Rainproof: rainfall or watering [15/30] minutes after application will not reduce weed control.
- Perennial landscape plants, trees, and shrubs may be planted 1 day after application.

LAWN RENOVATION/REPLACEMENT

Use Diquat/Fluazifop-P-Butyl/Dicamba ME RTU/this product to kill grass and weeds before planting new lawn.

- Determine the size of the area to be treated. [One gallon treats 350 sq. ft.] [One quart treats 88 sq. ft.]
- **DO NOT** mow within [1 week] [7 days] before spraying or [1 week] [7 days] after spraying.
- If soil is dry, water every other day for a week before application.
- Wait 7 days after last application to rake, till, or replant with seed or sod.

Weeds Controlled [Optional]

Alder	Cupgrass, Woolly	Lovegrass, Diffuse	Ragweed
Aspen, Quaking	Cudweed, Purple	Maiden Cane	Ragweed, Common
Bahiagrass	Dallisgrass	Mallow	Ragweed, Giant
Barley, Wild	Dandelion	Mallow, Common	(Buffaloweed)
Bedstraw	Dandelion, False	Mallow, Venice	Ragwort, Tansy
Beggarweed	Dewberry	Marestail (Horseweed)	Red Rice
Beggarweed, Creeping	Dock, Curly	Mayweed	Ryegrass, Annual
Beggarweed, Florida	Dog fennel	Medic, Black	Ryegrass, Italian
Bermudagrass	(Cypressweed)	Medic, Blue	Ryegrass, Perennial
Bentgrass	Eveningprimrose	Milkweed	Sandbur, Field
Bindweed, Field	Eveningprimrose, Common	Morningglory, Ivyleaf	Sandbur, Southern
Blackberry, Wild	Eveningprimrose, Cutleaf	Morningglory, Tall	Sandspur
Bluegrass	Fennel	Morningglory, Wild	Sesbania, Hemp
Bluegrass, Annual	Fescue species	Mullein, Common	Shattercane
Bluegrass, Kentucky	Fescue, Tall	Mustard, Blue	Shepherdspurse
Brassbuttons	Fiddleneck	Mustard, Tansy	Sida, Prickly (Teaweed)
Broadleaf Signalgrass	Filaree	Mustard, Tumble	Smartweed
Bromegrass	Foxtail	Mustard, Wild	Smartweed, Green
Bromegrass, Smooth	Foxtail, Giant	Nimblewill	Smartweed, Pennsylvania
Brownseed	Foxtail, Green	Nutsedge (Nutgrass)	Smartweed, Swamp
Brome, Downy	Foxtail, Yellow	Nutsedge, yellow	Smooth Cat's Ear
Bur clover	Geranium, Wild	Nutsedge, purple	Sorghum alnum
Buttercup	Goosegrass	Oats, wild	Sourdock
Buttercup, Roughseed	Groundsel, Common	Oldenlandia	Sowthistle
Buttercup, Tall	Guineagrass, Seedling	Orchardgrass	Sowthistle, Annual
Carrot, Wild (Queen Anne's Lace)	Henbit	Oxalis	Sowthistle, Spiny
Catchfly, Nightflowering	Horsenettle	Oxalis, yellow	Sprangletop
Cattail	Horseradish	Pampasgrass	Spurge
Ceanothus	Ironweed	Panicum, Fall	Spurge, Garden
Centipedegrass	Iceplant	Panicum, Texas	Spurge, Leafy
Chamomile, Corn	Ironweed	Paspalum	Spurge, Prostrate
Cheeseweed	Itchgrass	Pennycress, Field	Spurge, Spotted
Chickweed	Johnsongrass	(Fanweed, Frenchweed, Stinkweed)	Starthistle, Yellow
Chickweed, Common	Johnsongrass, Rhizome	Pennywort	St. Augustine grass
Chickweed, Mouseear	Johnsongrass, Seedling	Pigweed	Thistle, Artichoke
Clover	Junglerice	Pigweed, Prostrate	Thistle, Bull
Clovers (Annual)	Kikuyugrass	Pigweed, Redroot	Thistle, Canada
Clover, Red	Knapweed	(Carelessweed)	Timothy
Clover, Sweet	Knapweed, Black	Pigweed, Rough	Toadflax, Blue
Clover, White	Knapweed, Diffuse	Pigweed, Smooth	Torpedograss
Cockle, White	Knapweed, Russian	Pigweed, Tumble	Trumpetcreeper
Cocklebur	Knapweed, Spotted	Plantain	(Buckvine)
Cogongrass	Knawel	Plantain, Broadleaf	Vaseygrass
Coral bead	Knotweed	Plantain, Buckhorn	Velvetleaf
Crabgrass	Kochia	Plantain, common	Virginia Creeper
Crabgrass, Hairy	Ladysthumb	Puncturevine	Whiteweed
Crabgrass, Large	Lambsquarters	Purslane	Wild Oats
Crabgrass, Smooth	Lambsquarters, Common	Purslane, Common	Wild Proso Millet
Crabgrass, Southern	Lantana	Pusley, Florida	Wirestem Muhly
Crabgrass, Tropical	Lettuce, Prickly	Quackgrass	Witchgrass
Creeping Charlie	Little Bitter Cress	Rabbitfootgrass	Yarrow
Cupgrass, Prairie	London Rocket		Yarrow, Common
Cupgrass, Southwestern			

Rate Conversion Chart

Fl oz product	lb diquat dibromide	lb fluazifop-p-butyl	lb dicamba
24	0.0031	0.0011	0.0008
32	0.0042	0.0014	0.0011
128 (1 gallon)	0.0166	0.0056	0.0044
256 (2 gallons)	0.0332	0.0112	0.0088

STORAGE AND DISPOSAL

Storage & Disposal for Trigger Sprayer, Refill (Nonrefillable container)

STORAGE AND DISPOSAL

PESTICIDE STORAGE: Keep from freezing. To be stored in original container and placed in areas inaccessible to children.

PESTICIDE DISPOSAL AND CONTAINER HANDLING: Nonrefillable container. Do not reuse or refill this container. **If empty:** Place in trash or offer for recycling if available. **If partly filled:** Call your local solid waste agency for disposal instructions. Never place unused product down any indoor or outdoor drain.

Storage & Disposal for Trigger Sprayer, Trigger (Refillable container)

STORAGE AND DISPOSAL

PESTICIDE STORAGE: Keep from freezing. To be stored in original container and placed in areas inaccessible to children. [Rotate nozzle to closed position.] [Turn knob on cap to OFF. NO NEED TO DISCONNECT TRIGGER SPRAYER. Close nozzle on trigger sprayer. Place sprayer back in side clip.]

PESTICIDE DISPOSAL AND CONTAINER HANDLING: Nonrefillable container. Do not reuse or refill this container unless the Directions for Use allow a different concentrated or ready-to-use product to be diluted in or poured directly into the container. Reuse or refill this container according to the directions contained in the HOW TO REFILL section. **If empty:** Place in trash or offer for recycling if available. **If partly filled:** Call your local solid waste agency for disposal instructions. Never place unused product down any indoor or outdoor drain.

Storage & Disposal for Pull 'N Spray II

STORAGE AND DISPOSAL

PESTICIDE STORAGE: Keep from freezing. To be stored in original container and placed in areas inaccessible to children.

PESTICIDE DISPOSAL AND CONTAINER HANDLING: [Applicator Name] can be reused with [Product Name refill bottle/container]. Follow instructions in the Reuse Directions when reusing [applicator name]. OR Nonrefillable container. Do not reuse or refill this container. **If empty:** Place in trash or offer for recycling if available. **If partly filled:** Call your local solid waste agency for disposal instructions. Never place unused product down any indoor or outdoor drain.

Pump 'N Go® 2 Sprayer

STORAGE AND DISPOSAL

PESTICIDE STORAGE: Keep from freezing. To be stored in original container and placed in areas inaccessible to children. Push the [Insert Color] button and retract the wand until the [Insert Color] button snaps back into the original STORAGE POSITION. Place wand back onto [the top of] the bottle [in the integrated holster] with nozzle [facing down/ tip extended through the eyelet opening]. Push pump handle all the way down and turn pump handle and cap counter-clockwise to relieve pressure, then retighten to store.

PESTICIDE DISPOSAL AND CONTAINER HANDLING: Nonrefillable container. Do not reuse or refill this container unless the directions for use allow a different concentrated or ready-to-use product to be diluted in or poured directly into the container. Reuse or refill this container according to the directions contained in the HOW TO REFILL section. **If empty:** Place in trash or offer for recycling if available. **If partly filled:** Call your local solid waste agency for disposal instructions. Never place unused product down any indoor or outdoor drain.

Battery Powered Wand

STORAGE AND DISPOSAL

PESTICIDE STORAGE: Keep from freezing. To be stored in original container and placed in areas inaccessible to children.

PESTICIDE DISPOSAL AND CONTAINER HANDLING: [Applicator Name] can be reused with [Product Name refill bottle/container]. Follow instructions in Reuse Directions when reusing [applicator name]. OR Nonrefillable container. Do not reuse or refill this container. **If empty:** Place in trash or offer for recycling if available. **If partly filled:** Call your local solid waste agency for disposal instructions. Never place unused product down any indoor or outdoor drain.

Battery Powered Wand

STORAGE AND DISPOSAL

PESTICIDE STORAGE: Keep from freezing. To be stored in original container and placed in areas inaccessible to children. Turn knob on cap to OFF. NO NEED TO DISCONNECT SPRAYER. Close nozzle on wand sprayer. Engage trigger lock. Flip the wand closed and place back in side clip.

PESTICIDE DISPOSAL AND CONTAINER HANDLING: Nonrefillable container. Do not reuse or refill this container unless the Directions for Use allow a different concentrated or ready-to-use product to be diluted in or poured directly into the container. Reuse or refill this container according to the directions contained in the HOW TO REFILL section. **If empty:** Place in trash or offer for recycling if available. **If partly filled:** Call your local solid waste agency for disposal instructions. Never place unused product down any indoor or outdoor drain.

Comprehensive List of Marketing Claims [Optional]

- Absorbed into both broadleaf and grass weeds
- Experience the [Diquat/Fluazifop-P-Butyl/Dicamba ME RTU] Advantage ([peel back this panel for details] [see details inside/underneath this booklet] [see details on back panel])
- Peel/Open Here
- [Open] Resealable Label for Directions and Precautions
- Press to Reseal
- Kills [annual and perennial] weeds, grasses and other unwanted plants
- Multipurpose grass and [broadleaf] weed control [with residual weed control]
- For weed control - kills weeds and grasses in [1-2 weeks] [2-4 weeks] - roots and all
- Eliminates most common weeds, grasses and unwanted vegetation
- [Proven] [Trusted] performance
- Guaranteed effective: Kills [200] [over 150] [over 175] types of weeds and grasses, roots and all, with just one application
- One application kills [200] [over 150] [over 175] types of weeds and grasses, roots and all
- Kills [200] [over 150] [over 175] weeds
- Kills [to] the root [guaranteed]
- Kills [the toughest weeds and grasses to] the root so [weeds] [they] don't come back
- Kills the root so weeds don't come back
- Kills the roots of [both] broadleaf and grassy weeds
- Kills weeds and grasses down to the root
- Kills [all types of] [most/many/common] weeds [and grasses]
- Spray the leaves to kill the roots
- [A] single application controls most/many/common [listed] weeds
- Individual results may vary
- For outdoor residential use
- No root. No weed. No Problem.
- Speeds absorption to the root for complete kill
- Begins [absorbing] [working] on contact
- Dead [weeds] in a day
- For weeds that are dead in [a] [one] day
- [Next day] [This weekend] results: [Begins] [Starts] killing on contact, visible results in/as fast as [1 hour] [2 hours] [3 hours] [4 hours] [24 hours] [hours]
- [See] [Visible] results in/as fast as [1] [2] [3] [4] hours
- Works in hours
- Starts [to kill] [working] immediately
- Absorbs on contact, starts working immediately
- Begins to kill on contact
- Works when absorbed by the foliage of weeds
- Overnight results
- Ideal for killing unwanted weeds and grasses throughout your yard.
- Use along fences; in cracks of walks, drives and patios; and around perennial beds, trees and shrubs

- Kills weeds around perennial beds, around trees, shrubs and fences, and on patios, paths, sidewalks, sidewalk cracks, walkways, driveways, and other areas in your yard
- Can be used many places weeds and grasses grow, including patios, walkways, and driveways; along fences; in landscaping beds; or around perennials, shrubs and trees
- Kills grasses and [broadleaf] weeds in - Patios - Driveways - Sidewalks - Ornamental Gardens
- [Spray weeds] [Use] in perennial beds, around trees, shrubs and around fences, and on patios, paths, sidewalks, sidewalk cracks, walkways, driveways, and other areas in your yard
- [Use] For Weed Control: Use along fences, paths, patios, sidewalks and driveways, around trees, shrubs, ornamental plantings, perennial beds and buildings, and in brick and gravel walkways
- Use to trim and edge landscape areas
- [Use] For Spot Spraying: Use in and around perennial beds, ornamental trees, shrubs, fences, driveways and walkways
- For control that [doesn't] [won't] wash away
- Guaranteed effective results even if it rains within hours
- Won't be washed away by rain or watering [15 minutes] [30 minutes] after treatment
- Rainfast/rainproof in [15 minutes] [30 minutes].
- Rain and waterproof in [15 minutes] [30 minutes or less]
- Once it enters the plant, it won't wash off
- Rainfast/rainproof in [15/30] minutes - enters the plant on contact
- Won't wash off
- Won't wash away
- Waterproof
- Weatherproof
- Triple-Action [formula]
- [This product/formula] [combines] [3/three] [actives/active ingredients] [combined] [to] deliver both visible results within hours and deep penetration to kill the roots
- [3/three/triple] actives/active ingredients [combination]*
- [Combines] 3/three/triple actives/active ingredients [combination]
- Dual Activity
- Economical
- Value [size/sized]
- Ready To Use
- Fast-acting [formula]
- Fast-acting formula moves to the root [more] quickly
- Quick kill formula
- Completely kills even the toughest weeds and grasses
- Kills to the root so weeds don't come back
- Water-based formula
- Low odor
- Battery operated sprayer
- Batteries included

- Refill [included]
- [Insert packaging type] refill
- [Insert applicator name] Up to X minutes of continuous spray
- Continuous spray
- [Insert applicator name] [with] extended reach/continuous spray [illustration]



- 2X extended reach*
- Always lock after use [illustration]



- Extended reach/continuous spray [insert applicator name]
- [Insert applicator name]/[wand] extends 2 feet [continuous spray] [illustration]



- [Container] treats/covers [up to] xxxx sq. ft. [Note to reviewer: 24 oz treats up to 65 sq ft, 1 gallon treats up to 350 sq ft]
- Coverage may vary based on the number, type or size of weeds treated in a given area
- Spot treat or spray evenly over 350 sq ft
- Guaranteed [We Guarantee It] [or Your Money Back]
- Dead Weeds Guaranteed [or Your Money Back]
- Satisfaction guaranteed or we will gladly refund purchase price
- Satisfaction guaranteed or your money back with proof of purchase
- Insert company Promise - satisfaction guaranteed
- ACE Quality since 1924

*vs previous design [illustration]




The ***insert company name*** Guarantee: If for any reason you, the consumer are not satisfied with this product, mail us your original proof of purchase to obtain a full refund of your purchase price.

Consumer Guarantee: If for any reason you are not satisfied after using this product, simply send us original proof of purchase and we will refund the purchase price.

The ***[insert company/brand]*** Promise: If this [company/brand] product when used for its intended purpose fails to give you complete satisfaction return the item to the [company] store where purchased for free replacement of the same or similar item.

The Syngenta logo is a trademark of a Syngenta Group Company/**insert trademark statement**

<p>Questions or Comments?</p> <p>[Call] [800 number] [icon phone]  [or visit our website at] [www._____.com]</p> <p>[icon computer] </p>
--

©20XX Syngenta/**insert company name**. [World rights reserved.]

Manufactured for/Sold by/Made for/Produced for:
Syngenta Crop Protection, Inc. [**insert company name/ address**]
P.O. Box 18300
Greensboro, North Carolina 27419-8300

[Assembled in/ Made in] [USA/ **Insert Country**]

Diquat-Fluazifop-P-Butyl-Dicamba ME RTU 1345 MAS 0919 AMEND 0120-Ver A – mar – 3/25/2020
000100-01345.20200131A.D-F-D ME RTU.AMEND.JAN2020