

UNITED STATES ENVIRONMENTAL PROTECTION AGENCY  
WASHINGTON, D.C. 20460



OFFICE OF  
CHEMICAL SAFETY AND  
POLLUTION PREVENTION

November 22, 2013

Mr. Charles T. Levy  
Syngenta Crop Protection, LLC  
P.O. Box 18300  
Greensboro, NC 27419

Subject: Amended label to add pollinator protection language.  
Product Name: Thiamethoxam 0.40/Lambda-cyhalothrin 0.16 ME Concentrate  
EPA Reg. No. 100-1334  
EPA Decision No. 484952  
Submission dated September 25, 2013; resubmission dated November 20, 2013

Dear Mr. Levy:

The labeling referred to above, submitted in connection with registration under the Federal Insecticide, Fungicide, and Rodenticide Act is acceptable. A stamped copy of your labeling is enclosed for your records. This labeling supersedes all previously accepted labeling. You must submit one (1) copy of the final printed labeling before you release the product for shipment with the new labeling. See 40 CFR 156.10(a)(6).

Under 40 CFR 152.130(d), EPA may establish dates by which all product distributed or sold by the registrant must bear revised labeling. The following paragraphs set forth the schedule for ensuring that that your product bears revised labeling within a reasonable time period:

- Any product released for shipment after 2/28/14 must bear the new label.

If these conditions are not complied with, EPA will take appropriate action against this registration. If you have any questions please contact Julie Chao at 703-308-8735 or [chao.julie@epa.gov](mailto:chao.julie@epa.gov).

Regards,  
A handwritten signature in black ink that reads "Venus Eagle".

Venus Eagle, Product Manager (01)  
Insecticide-Rodenticide Branch  
Registration Division (7505P)

2/22

Thiamethoxam 0.40/Lambda-cyhalothrin 0.16 ME Concentrate (100-1334)

[Master Label]

**THIAMETHOXAM 0.40/LAMBDA-CYHALOTHRIN 0.16 ME CONCENTRATE**

**Insecticide**

[For control of grubs and other insects in lawns and landscape plantings] [and outdoor nuisance pests]

Active Ingredient:

Thiamethoxam (CAS No. 153719-23-4) ..... 0.40%

Lambda-cyhalothrin (CAS No. 91465-08-6) ..... 0.16%

Other Ingredients ..... 99.44%

Total: ..... 100.00%

**KEEP OUT OF REACH OF CHILDREN**

**CAUTION**

See additional precautionary statements and directions for use [in booklet][on label].

EPA Reg. No. 100-1334

[EPA Est. No. placeholder]

[Net Contents placeholder]

Net Contents

ACCEPTED  
NOV 22 2013

Under the Federal Insecticide, Fungicide,  
and Rodenticide Act, as amended, for the  
pesticide registered under:

EPA. Reg. No: 100-1334

3/22

Thiamethoxam 0.40/Lambda-cyhalothrin 0.16 ME Concentrate (100-1334)

**PRECAUTIONARY STATEMENTS**

**Hazards to Humans and Domestic Animals**

**CAUTION**

Harmful if swallowed. Causes moderate eye irritation. Wash hands thoroughly with soap and water after handling and before eating, drinking, chewing gum or using tobacco. Avoid contact with eyes or clothing.

**FIRST AID**

<b>If swallowed</b>	<ul style="list-style-type: none"> <li>• Call a poison control center or doctor immediately for treatment advice.</li> <li>• Have person sip a glass of water if able to swallow.</li> <li>• Do not induce vomiting unless told to do so by a poison control center or doctor.</li> <li>• Do not give anything by mouth to an unconscious person.</li> </ul>
<b>If in eyes</b>	<ul style="list-style-type: none"> <li>• Hold eye open and rinse slowly and gently with water for 15-20 minutes.</li> <li>• Remove contact lenses, if present, and after the first 5 minutes, then continue rinsing eye.</li> <li>• Call a poison control center, doctor, or 1-800-888-8372 immediately for treatment advice.</li> </ul>
<p>Have the product container or label with you when calling a poison control center or doctor, or going for treatment.</p>	
<p align="center"><b>HOTLINE NUMBER</b></p> <p align="center">For 24-Hour Medical Emergency Assistance (Human or Animal) or Chemical Emergency Assistance (Spill, Leak, Fire, or Accident), Call <b>1-800-888-8372 [Alternate phone number]</b></p>	

**Environmental Hazards**

This product is extremely toxic to fish. Drift and runoff from treated areas may be hazardous to aquatic organisms in neighboring areas. To protect the environment, do not allow pesticide to enter or run off into storm drains, drainage ditches, gutters, or surface waters. Applying this product in calm weather when rain is not predicted for the next 24 hours will help to ensure that wind or rain does not blow or wash pesticide off

4/  
22

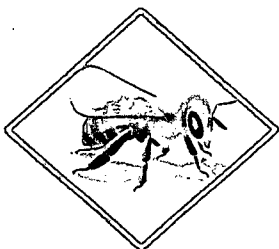
Thiamethoxam 0.40/Lambda-cyhalothrin 0.16 ME Concentrate (100-1334)

the treatment area. Rinsing application equipment over the treated area will help avoid run-off to water bodies or drainage systems.

This product is highly toxic to bees exposed to direct treatment or residues on blooming crops/plants or weeds. Do not apply this product or allow it to drift to blooming crops/plants or weeds if bees are foraging..

5/22

## PROTECTION OF POLLINATORS



**APPLICATION RESTRICTIONS EXIST FOR THIS PRODUCT BECAUSE OF RISK TO BEES AND OTHER INSECT POLLINATORS. FOLLOW APPLICATION RESTRICTIONS FOUND IN THE DIRECTIONS FOR USE TO PROTECT POLLINATORS.**



Look for the bee hazard icon in the Directions for Use for each application site for specific use restrictions and instructions to protect bees and other insect pollinators.

**This product can kill bees and other insect pollinators.**

Bees and other insect pollinators will forage on plants when they flower, shed pollen, or produce nectar.

Bees and other insect pollinators can be exposed to this pesticide from:

- Direct contact during foliar applications, or contact with residues on plant surfaces after foliar applications
- Ingestion of residues in nectar and pollen when the pesticide is applied as a seed treatment, soil, tree injection, as well as foliar applications.

When Using This Product Take Steps To:

- Minimize exposure of this product to bees and other insect pollinators when they are foraging on pollinator attractive plants around the application site.
- Minimize drift of this product on to beehives or to off-site pollinator attractive habitat. Drift of this product onto beehives or off-site to pollinator attractive habitat can result in bee kills.

Information on protecting bees and other insect pollinators may be found at the Pesticide Environmental Stewardship website at:

<http://pesticidestewardship.org/PollinatorProtection/Pages/default.aspx>.

Pesticide incidents (for example, bee kills) should immediately be reported to the state/tribal lead agency. For contact information for your state, go to:

[www.aapco.org/officials.html](http://www.aapco.org/officials.html). Pesticide incidents should also be reported to the National Pesticide Information Center at: [www.npic.orst.edu](http://www.npic.orst.edu) or directly to EPA at: [beekill@epa.gov](mailto:beekill@epa.gov)

6/  
22

Thiamethoxam 0.40/Lambda-cyhalothrin 0.16 ME Concentrate (100-1334)

---

**CONDITIONS OF SALE AND LIMITATION OF WARRANTY AND LIABILITY**

---

**NOTICE:** Read the entire Directions for Use and Conditions of Sale and Limitation of Warranty and Liability before buying or using this product. If the terms are not acceptable, return the product at once, unopened, and the purchase price will be refunded.

Syngenta warrants that this product conforms to the chemical description on the label and is reasonably fit for the purposes stated in the Directions for Use, when used in accordance with the directions under normal use conditions. You assume any and all risk of using, storing, or handling this product contrary to label instructions, or under abnormal conditions or conditions not reasonably foreseeable to Seller or Syngenta. **TO THE EXTENT CONSISTENT WITH APPLICABLE LAW, NEITHER SYNGENTA NOR SELLER MAKE ANY WARRANTY OF MERCHANTABILITY NOR ANY OTHER EXPRESS OR IMPLIED WARRANTIES EXCEPT AS STATED ABOVE.**

To the extent consistent with applicable law, in no event shall Syngenta or Seller be liable for any incidental, consequential, or special damages resulting from the use, storage, or handling of this product.

7/  
22

Thiamethoxam 0.40/Lambda-cyhalothrin 0.16 ME Concentrate (100-1334)

## DIRECTIONS FOR USE

It is a violation of Federal law to use this product in a manner inconsistent with its labeling.



**Do not apply Thiamethoxam 0.40 Lambda-cyhalothrin 0.16 ME Concentrate while bees are foraging. Do not apply Thiamethoxam 0.40 Lambda-cyhalothrin 0.16 ME Concentrate to plants that are flowering. Only apply after all flower petals have fallen off.**

- Read entire label before using this product.
- People and pets may re-enter after the treated area has been allowed to dry.
- This product is non-staining to most home siding depending on age and cleanliness. However, before using in areas where the spray may contact home siding (vinyl siding in particular), test in an inconspicuous area and recheck in a few hours. Do not use if any staining is observed.
- Do not use measuring utensils such as cups and spoons for food purposes after use with pesticides.[Mix and Spray product only]
- Do not allow applications to contact water bodies, particularly those inhabited by aquatic organisms, such as ornamental fish ponds.
- Do not water the treated area to the point of run-off.
- Do not make applications during rain.
- All outdoor applications must be limited to spot or crack-and-crevice treatments only, except for the following permitted uses:
  1. Treatment to soil or vegetation around structures;
  2. Applications to lawns, turf, and other vegetation;
  3. Applications to building foundations, up to a maximum height of 3 feet.
- Application is prohibited directly into sewers or drains, or to any area like a gutter where drainage to sewers, storm drains, water bodies, or aquatic habitats can occur. Do not allow the product to enter any drain during or after application.

## Thiamethoxam 0.40/Lambda-cyhalothrin 0.16 ME Concentrate (100-1334)

---

**HOW TO APPLY [Mix and Spray product only]**

---

- **[Shake container well before each use.]**
- **Determine size of spraying job.** For lawns, measure the area to be sprayed. For landscape plantings, estimate the amount of spray mixture to provide thorough coverage of the foliage. For outdoor nuisance pests, estimate the square footage of the treatment area.
- **Carefully measure and mix** the amount of product and water as indicated in the use directions. [squeeze and pour container only] To use the squeeze and pour bottle, remove cap and inner seal from the calibrated [dosing][measuring] chamber. Then replace cap and tighten, then loosen ¼ turn. Gently squeeze bottle to fill chamber to the appropriate [level][dose]. Tilt the bottle to the direction indicated by the arrow on the bottle. Pour [Thiamethoxam 0.40/Lambda-cyhalothrin 0.16 ME Concentrate][concentrate] directly into sprayer and slowly add the appropriate amount of water. Replace cap.
- **Spray as directed.** Thorough coverage is important. Spray just enough to cover treated area. Avoid over wetting.
- **Flush sprayer** with clean water after each use.

---

**HOW TO APPLY [Hose End Spray product only]**

---

- **[Shake container well before each use.]**
- **Connect a garden hose** to the [Hose End Sprayer] nozzle. Make sure the dial on the hose end sprayer is in the "OFF" position [with the safety tab in the valve notch].
- **Turn on water at faucet.** Extend hose to the farthest area to be treated and work back toward the faucet so you don't come in contact with the treated area.
- **To begin spraying,** point nozzle toward treatment area and [1.) bend the safety tab back with your thumb, 2.) hold safety tab back while turning dial counter clockwise until it stops.] turn the hose end sprayer to the "ON" position. Water will automatically mix with the product. [Optional graphic of hose end sprayer]
- **Spray until wet.** Walk at a steady pace while spraying using an even sweeping motion, slightly overlapping treated areas.
- **To stop spraying,** quickly turn the [dial counter clockwise until it stops and the safety tab engages into the notch] [hose end sprayer to the "OFF" position]. Turn water off at faucet. To relieve pressure before removing nozzle from hose, [bend the safety tab back and turn dial "ON"] [turn the hose end sprayer to the "ON" position] until water stops spraying.



## Thiamethoxam 0.40/Lambda-cyhalothrin 0.16 ME Concentrate (100-1334)

[Directions for Mix and Spray product and Hose End Spray product]

### Where to Apply

- Home lawns
- Landscape plantings, flower beds
- Outdoor areas around the home

### Benefits

- [Dual-action] with contact control plus long-lasting residual control
- [Rainfast] [Rainproof] [Waterproof] within 1 hour.
- [Broad spectrum control.]
- [[For use][For insect control]][Can be used] on [all major] landscape plantings]
- [[For use][For insect control]][Can be used] on home lawns]
- [[For use][For insect control]][Can be used] on home lawns and [all major] landscape plantings]
- [Provides a barrier to insect pests outside your home]

### How it Works

The [dual-action] [dual activity] of Thiamethoxam 0.40/Lambda-cyhalothrin 0.16 ME Concentrate [kills] [controls] listed insects two ways: through direct contact and by ingestion.

One ingredient starts working right away [killing] [controlling] insects that come in contact with the product. The other ingredient is absorbed into the plant, moves rapidly throughout, and causes insects [which ingest plant tissue] to stop feeding and die. Thiamethoxam 0.40/Lambda-cyhalothrin 0.16 ME Concentrate keeps insects from reestablishing for up to 30 days.

10/22

Thiamethoxam 0.40/Lambda-cyhalothrin 0.16 ME Concentrate (100-1334)

**LAWNS** [Directions for Mix and Spray product]

**How to apply**

- Mix the specified amount of product, listed in the **How Much to Apply** column of the table below, in 1 gallon of water to [cover] [treat] 500 sq ft.
- [1 qt. of Thiamethoxam 0.40/Lambda-cyhalothrin 0.16 ME Concentrate treats up to 4,000 sq ft.]

Insect pest	How much to apply (in 1 gallon water)	When to apply
<b>Underground/Thatch Infesting Insects</b>		
White grubs*	8 fl oz	May through mid-August. [Contact your local Cooperative Extension Service for the best time to apply in your area.]
Mole crickets (nymphs and young adults)	8 fl oz	For Florida, apply once in April to early May. In other areas, apply mid-May to mid-June.
Chinch bugs	8 fl oz	Apply prior to hatching of nymphs.
Billbugs	8 fl oz	Apply when activity is first observed or when chewed or brown grass indicates billbugs are present.
Hyperodes weevils (adult)	8 fl oz	Apply when first noticed, about April - May.
Black turfgrass ataenius (adult) Chiggers European crane flies	8 fl oz	Apply when first noticed.

\* Grubs (larvae) of Japanese beetle, Northern masked chafer, Southern masked chafer, European chafer, May or June beetle, Asiatic garden beetle, Oriental beetle, Green June beetle, Scarab beetle, Black turfgrass ataenius, Dung beetle, Billbugs.

Thiamethoxam 0.40/Lambda-cyhalothrin 0.16 ME Concentrate (100-1334)

Insect pest	How much to apply (in 1 gallon water)	When to apply
<b>Surface Insects</b>		
Ants* Armyworms Centipedes Cockroaches Crickets Cutworms Earwigs Fleas Grasshoppers Green June Beetles Japanese Beetles (adult) Millipedes Mites Mosquitoes Palmetto bugs Pillbugs** Sod webworms Sowbugs Springtails Ticks (including species which transmit Lyme disease) Waterbugs	4-8 fl oz	Apply when insects are present.
Annual bluegrass weevil Craneflies Flea Beetles Greenbugs Leafhoppers Spittlebugs	8 fl oz	Apply when insects are present.

12/22

Thiamethoxam 0.40/Lambda-cyhalothrin 0.16 ME Concentrate (100-1334)

<b>Insect pest</b>	<b>How much to apply (in 1 gallon water)</b>	<b>When to apply</b>
Fire Ants	13 fl oz	Thoroughly soak each mound and a 3 ft diameter area around each mound. Apply the mixture gently to avoid disturbing the mound. For best results, apply in the early morning or late evening.

\* Argentine, Southern, Field, Allegheny Mound, Florida Carpenter, Black Carpenter, Cornfield, Honey, Pavement, Nuisance.

\*\* Pillbugs must be sprayed directly to be killed

13/  
22

Thiamethoxam 0.40/Lambda-cyhalothrin 0.16 ME Concentrate (100-1334)

**LAWNS** [Directions for Hose End Spray product]

Insect pest	How much to apply (in 1 gallon water)	When to apply
<b>Underground/Thatch Infesting Insects</b>		
White grubs*	[1 qt/2,000] [1 pt/1,000] sq ft of lawn	May through mid-August. [Contact your local Cooperative Extension Service for the best time to apply in your area.]
Mole crickets (nymphs and young adults)	[1 qt/2,000] [1 pt/1,000] sq ft of lawn	For Florida, apply once in April to early May. In other areas, apply mid-May to mid-June.
Chinch bugs	[1 qt/2,000] [1 pt/1,000] sq ft of lawn	Apply prior to hatching of nymphs.
Billbugs	[1 qt/2,000] [1 pt/1,000] sq ft of lawn	Apply when activity is first observed or when chewed or brown grass indicates billbugs are present.
Hyperodes weevils (adult)	[1 qt/2,000] [1 pt/1,000] sq ft of lawn	Apply when first noticed, about April - May.
Black turfgrass ataenius (adult) Chiggers European crane flies	[1 qt/2,000] [1 pt/1,000] sq ft of lawn	Apply when first noticed.
* Grubs (larvae) of Japanese beetle, Northern masked chafer, Southern masked chafer, European chafer, May or June beetle, Asiatic garden beetle, Oriental beetle, Green June beetle, Scarab beetle, Black turfgrass ataenius, Dung beetle, Billbugs.		

14/  
22

Thiamethoxam 0.40/Lambda-cyhalothrin 0.16 ME Concentrate (100-1334)

<b>Surface Insects</b>		
Ants* Armyworms Centipedes Cockroaches Crickets Cutworms Earwigs Fleas Grasshoppers Green June Beetles Japanese Beetles (adult) Millipedes Mites Mosquitoes Palmetto bugs Pillbugs** Sod webworms Sowbugs Springtails Ticks (including species which transmit Lyme disease) Waterbugs	[1 pt-1 qt/2,000] [½ pt-1 pt/1,000] sq ft of lawn	Apply when insects are present.
Annual bluegrass weevil Craneflies Flea Beetles Greenbugs Leafhoppers Spittlebugs	[1 qt/2,000] [1 pt/1,000] sq ft of lawn	Apply when insects are present.

\* Argentine, Southern, Field, Allegheny Mound, Florida Carpenter, Black Carpenter, Cornfield, Honey, Pavement, Nuisance.

\*\* Pillbugs must be sprayed directly to be killed

**LANDSCAPE PLANTS** [Directions for Mix and Spray product and Hose End Spray product]

**Where to Apply**

- Landscape plantings, such as shrubs, roses, evergreens, trees, foliage plants, groundcovers
- Flower beds

**How to Apply**

- [Mix and Spray product only] Mix 3 fl oz in 1 gallon of water.
- Spray uniformly to wet the leaves, but not to runoff.
- [Contact your local Cooperative Extension Service for more information on the best time to apply in your area.]
- Re-apply as needed.

**Controls These Insects**

Adelgids [ <i>Hemlock wooly adelgid</i> ]	Japanese beetles (adults)	Scale insects (crawlers)***
Ants*	June beetles (adults)	[ <i>California red scale</i> (crawlers)***]
Aphids	Lace bugs [ <i>Azalea lace bug</i> ]	[ <i>Pine needle scale</i> (crawlers)***]
Armyworms	[ <i>Hawthorne lace bug</i> ]	Soft Scales*
Azalea caterpillars	Leaf rollers	[ <i>Cottony cushion scale</i> ***]
Bagworms**	Leaf skeletonizers	[ <i>Brown soft scale</i> ***]
Black vine weevils (adult)	Leaf-feeding beetles	[ <i>Fletcher scale</i> ***]
Blister gall	Leaf-feeding caterpillars	Spider mites
Boxelder bugs	Leafhoppers	Spittlebugs
Broadmites	Leafminers	Spiders
Budworms	Mealybugs	Striped beetles
California oakworms	Midges	Striped oakworms
Cankerworms	Mosquitoes	Tent caterpillars
Clover mites	Nipple gall	[ <i>Forest tent caterpillars</i> ]
Cockroaches	Oleander moth larvae	[ <i>Eastern tent caterpillars</i> ]
Crickets	Pillbugs***	Thrips
Cutworms	Pine shoot beetles	Tip moths
Elm leaf beetles	Pinetip moths	Tussock moth larvae
Fall webworms	Plant bugs	Wasps
Flea beetles	Root weevils	Whiteflies
Gypsy moth larvae	Sawflies	
Honeylocust pod gall midge	[ <i>Pine sawflies</i> ]	
	[ <i>European pear sawfly</i> ]	
	[ <i>European sawflies</i> ]	

16/  
22

Thiamethoxam 0.40/Lambda-cyhalothrin 0.16 ME Concentrate (100-1334)

- \* Argentine, Southern, Field, Allegheny Mound, Florida Carpenter, Black Carpenter, Cornfield, Honey, Pavement, Nuisance.
- \*\*For best control of scale insects, spray leaves, stems, and trunks thoroughly.
- \*\*\* Pillbugs must be sprayed directly to be killed.
- \*\*\*\*Spray directly on the bagworm larvae after they hatch. Control is most effective when the larvae are young.



---

**OUTDOOR NUISANCE PESTS** [Directions for Mix and Spray product only]

---

**Where to apply**

- around doors and window frames
- around light fixtures, utility entry points
- soffits, eaves, and vents
- other areas where pests may enter the home, alight, trail or congregate
- along foundations

**How to Apply**

- [Mix [8 fl oz] [1 cup] [16 tablespoons] in 4 gallon of water to [cover] [treat] 1,000 sq ft.]
- [Mix [2 fl oz] [¼ cup] [4 tablespoons] in 1 gallon of water to [cover] [treat] 250 sq ft.]
- Spray uniformly over the surface.
- Ants: thoroughly wet ant hills and ant trails.

Ants*	Crickets	Pillbugs**
Asian lady beetles	Earwigs	Scorpions**
Bees	Fleas	Sowbugs
Beetles	Flies	Spider mites
Boxelder bugs	Lady beetles	Spiders
Carpenter bees	Millipedes	Ticks
Centipedes	Mites	Wasps
Clover mites	Mosquitoes	Waterbugs
Cockroaches	Palmetto bugs	

\* Argentine, Southern, Field, Allegheny Mound, Florida Carpenter, Black Carpenter, Cornfield, Honey, Pavement, Nuisance.

\*\* Pillbugs and scorpions must be sprayed directly to be killed.

**STORAGE AND DISPOSAL** [for Mix and Spray product and Hose End Spray product]

Do not contaminate water, food, or feed by storage and disposal.

**Pesticide Storage**

Store in a cool, dry place. Keep container closed and away from food, feedstuffs, and domestic water supplies.

**Pesticide Disposal and Container Handling [consumer products]**

Non-refillable container. Do not reuse or refill this container.

**If empty:** Place in trash or offer for recycling if available.

**If partly filled:** Call your local solid waste agency or [1-800-888-8372] [*Alternate phone number*] for disposal instructions. Never place unused product down any indoor or outdoor drain.

**Pesticide Disposal [bulk and mini-bulk]**

Pesticide wastes are toxic. Improper disposal of excess pesticide, spray mixture, or rinsate is a violation of Federal law. If these wastes cannot be disposed of by use according to label instructions, contact your State Pesticide or Environmental Control Agency, or the Hazardous Waste representative at the nearest EPA regional office.

**Container Handling [bulk and mini-bulk]**

Non-refillable container. Do not reuse or refill this container.

Triple rinse container (or equivalent) promptly after emptying. Triple rinse as follows: empty the remaining contents into application equipment or a mix tank and drain for 10 seconds after the flow begins to drip. Fill the container ¼ full with water and recap. Shake for 10 seconds. Pour rinsate into application equipment or a mix tank or store rinsate for later use or disposal. Drain for 10 seconds after the flow begins to drip. Repeat this procedure two more times. Then offer for recycling if available or puncture and dispose of in a sanitary landfill, or by incineration. Do not burn unless allowed by state and local ordinances.

Thiamethoxam 0.40/Lambda-cyhalothrin 0.16 ME Concentrate (100-1334)

**[Comprehensive List of Optional Marketing Claims follows]**

- Dual-Action [Formula]
- Dual Activity [Formulation]
- Fast-Acting [Formula]
- Long-Lasting [Formula]
- Broad Spectrum [Formula] [Control]
  
- Kills [listed insects] on contact [plus residual control]
- Residual control
- [Dual-action] with contact control plus long-lasting residual control
- [Thiamethoxam 0.40/Lambda-cyhalothrin 0.16 ME Concentrate] keeps insects from reestablishing for up to 30 days.
- [Thiamethoxam 0.40/Lambda-cyhalothrin 0.16 ME Concentrate] Extended Control
- [Kills] [Control] listed insects for up to 30 days
- Kills listed [insects] [surface insects] on contact
- [Insect] Feeding will stop within minutes
- Kills fast
- Fast Killing
- [Kills] [Controls] listed insects in 24 hours
- Works in 24 hours
  
- [Rainproof] [Rainfast] [Waterproof] within 1 hour
- Rain and waterproof in [60 minutes] [one hour][or less]
  
- Controls [Listed] [Landscape] [Ornamental] Pests
- [For use][For insect control][Can be used] on all major landscape plantings
- Controls [Listed] [Lawn] [Turf] Pests
- [For use][For insect control][Can be used] on [home] lawns
- [For use][For insect control][Can be used] on [home] lawns and all major landscape plantings
- Can be Applied to: [Lawns] [Turf], Landscape Plantings and Flower Beds, and around the outside of the home.
- [Kills] [Controls] Common [Lawn] [Turf] and Landscape [Pests] [Insects]
- [Kills] [Controls] Listed [Lawn] [Turf] and Landscape [Pests] [Insects]
- [Provides] Season-Long [Grub] Control
- A Single Application Controls Grubs [Season-Long]
- Season-long [soil insect] [grub] control
- Protects [Lawns ] [Turf] [Turfgrass] from Grub [Damage] [Feeding]
- Controls Grubs and Allows Turf to Recover from [Grub] Damage
- [Can be Applied] [Apply] [Spring] Through [Late] Summer

Thiamethoxam 0.40/Lambda-cyhalothrin 0.16 ME Concentrate (100-1334)

- [Kills][Controls] more than 50 listed insects
  - Kills Ants [On Contact]
  - Kills Japanese Beetles [on contact]
  - Kills whiteflies, [and] aphids, [and] [mealybugs]
  - Kills scale insects
  - Kills wasps
  - Kills common insect pests of roses
- 
- Provides a barrier to insect pests outside your home
  - Kills insects [outside] before they come inside
- 
- Kills fire ant colony
  - Kills fire ant queen
  - Kills fire ant queen and colony [in 24 hours]
  - [Controls] [kills] fire ants [on contact]
  - Reaches deep to kill [entire colony] [the queen] [fire ants]
  - Limits mound formation
  - Destroys fire ant mounds
  - [Fire ant] mound destroyer
  - Kills Fire Ants in 24 Hours
  - Kills Fire Ant Mounds in 24 hours
  - Kills the Queen
  - Kills the Fire Ant Mound
  - Kills the Queen and Mound
  - Controls Fire Ants for up to Four Weeks
- 
- Clear Formula
  - Clear Formula – Non-staining, Low odor
  - Non-staining Clear Formula
  - Low Odor Clear Formula
  - No lingering odor
  - No oily residue
  - Unscented
  - Leaves no odor
  - Low Odor
  - Water-based
- 
- Treats up to xxxx square feet
  - Contains [Thiamethoxam]

## Thiamethoxam 0.40/Lambda-cyhalothrin 0.16 ME Concentrate (100-1334)

- Contains [Lambda-cyhalothrin]
- [Results] Guaranteed or Your Money Back
- Guaranteed Results or Your Money Back
- Satisfaction Guaranteed or Your Money Back
- Larger Size – [xx% More!] [covers xxx square feet]
- Larger Size [38.4 oz]
- Special Value [Larger Size] [xx% more]
- Compare and Save - [larger size] [xx% more!]
- Squeeze and Measure [no touch] [precise dosing] [easy dose] [no mess] [easy cleanup]
- Easy Dose System [no touch] [easy to measure] [no mess] [easy cleanup]
- Easy Pour [ing] [System] [no touch] [easy to measure] [no mess] [easy cleanup]

22/  
22

Thiamethoxam 0.40/Lambda-cyhalothrin 0.16 ME Concentrate (100-1334)

[Product], the ALLIANCE FRAME  
the SYNGENTA Logo  
and the PURPOSE ICON  
are Trademarks of a Syngenta Group Company

©201\_ Syngenta

[Optional]  
For non-emergency (e.g., current product information), call  
[Syngenta Crop Protection at 1-800-334-9481] [Company name and optional alternate  
phone number]

Manufactured for:  
Syngenta Crop Protection, LLC  
P.O. Box 18300  
Greensboro, North Carolina 27419-8300

000100-01334.20130926.TMX .04 LMB .16 ME Concentrate\_amend