



U.S. ENVIRONMENTAL PROTECTION AGENCY

Office of Pesticide Programs
Registration Division (7505P)
1200 Pennsylvania Ave., N.W.
Washington, D.C. 20460

NOTICE OF PESTICIDE:

- Registration
- Reregistration

(under FIFRA, as amended)

EPA Reg. Number:

Date of Issuance:

100-1322

11-20-08

Term of Issuance: **Conditional**

Name of Pesticide Product:

Glyphosate Acid Technical 3

Name and Address of Registrant (include ZIP Code):

Syngenta Crop Protection, Inc.
P.O. Box 18300
Greensboro, NC 27419-8300

Note: Changes in labeling differing in substance from that accepted in connection with this registration must be submitted to and accepted by the Registration Division prior to use of the label in commerce. In any correspondence on this product always refer to the above EPA registration number.

On the basis of information furnished by the registrant, the above named pesticide is hereby registered/reregistered under the Federal Insecticide, Fungicide and Rodenticide Act.

Registration is in no way to be construed as an endorsement or recommendation of this product by the Agency. In order to protect health and the environment, the Administrator, on his motion, may at any time suspend or cancel the registration of a pesticide in accordance with the Act. The acceptance of any name in connection with the registration of a product under this Act is not to be construed as giving the registrant a right to exclusive use of the name or to its use if it has been covered by others.

This product is conditionally registered in accordance with FIFRA provided you agree in writing to:

1. Change the Hazards to Humans and Domestic Animals statements to "Causes Moderate eye irritation. Avoid contact with skin, eyes, or clothing. Wash thoroughly with soap and

Signature of Approving Official:

Date:

11-20-08

James Tompkins, Product Manager (25)
Herbicide Branch, Registration Division (7505P)

water after handling and before eating, drinking, chewing gum, or using tobacco. Wear long-sleeved shirt and long pants, socks, shoes, and gloves. Remove and wash contaminated clothing before reuse. Wear protective eyewear. Prolonged or repeated use of the product may cause allergic reactions in some individuals.” (as specified in the acute tox. review)

You will submit one copy of your final printed labeling before you release the product for shipment. If these conditions are not complied with, the registration will be subject to cancellation in accordance with FIFRA section 6(e). A stamped copy of labeling is enclosed for your records. If you have any questions please contact Erik Kraft at 703-308-9358.

Glyphosate Acid Technical 3

For Manufacturing Use Only

Active Ingredient:

Glyphosate: N-(phosphonomethyl) glycine..... 99.0%

Other Ingredients: 1.0%

Total: 100.0%

KEEP OUT OF REACH OF CHILDREN.

CAUTION

See additional precautionary statements and directions for use on label.

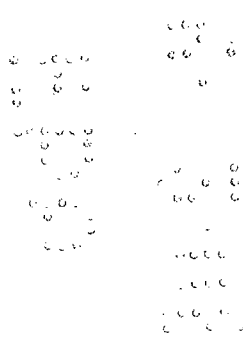
EPA Reg. No. 100-

EPA Est. _____

_____ pounds
Net Weight

ACCEPTED
with COMMENTS
In EPA Letter Dated:
11-20-08
Under the Federal Insecticide,
Fungicide, and Rodenticide Act
as amended, for the pesticide
registered under EPA Reg. No.

100-1322



| FIRST AID | |
|---|--|
| If in eyes | <ul style="list-style-type: none"> • Hold eye open and rinse slowly and gently with water for 15-20 minutes. • Remove contact lenses, if present, after the first 5 minutes, then continue rinsing eye. • Call a poison control center or doctor for treatment advice. |
| If swallowed | <ul style="list-style-type: none"> • Call a poison control center or doctor immediately for treatment advice. • Have person sip a glass of water if able to swallow. • Do not induce vomiting unless told to by a poison control center or doctor. • Do not give anything by mouth to an unconscious person. |
| If on skin or clothing | <ul style="list-style-type: none"> • Take off contaminated clothing. • Rinse skin immediately with plenty of water for 15-20 minutes. • Call a poison control center or doctor for treatment advice. |
| If inhaled | <ul style="list-style-type: none"> • Move person to fresh air. • If person is not breathing, call 911 or an ambulance, then give artificial respiration, preferably mouth-to-mouth if possible. • Call a poison control center or doctor for treatment advice. |
| Have the product container or label with you when calling a poison control center or doctor, or going for treatment. | |
| HOTLINE NUMBER For 24-Hour Medical Emergency Assistance (Human or Animal) or Chemical Emergency Assistance (Spill, Leak, Fire, or Accident) Call 1-800-888-8372 | |

PRECAUTIONARY STATEMENTS

Hazards to Humans and Domestic Animals

CAUTION

Causes moderate eye irritation. Avoid contact with skin, eyes, or clothing. Wash thoroughly with soap and water after handling and before eating, drinking, chewing gum, or using tobacco.

Environmental Hazards

Do not discharge effluent containing this product into lakes, streams, ponds, estuaries, oceans or other waters unless in accordance with the requirements of a National Pollutant Discharge Elimination System (NPDES) permit and the permitting authority has been notified in writing prior to discharge. Do not discharge effluent containing this

product to sewer systems without previously notifying the local sewage treatment plant authority. For guidance, contact your State Water Board or Regional Office of the EPA.

Physical or Chemical Hazards

Solutions of this product should be mixed and stored using only stainless steel, fiberglass, plastic and plastic-lined containers. Do not mix, store or utilize this product or solutions of this product in galvanized steel or unlined steel (except stainless steel) containers or tanks. This product or solutions of this product react with such containers and tanks to produce hydrogen gas which may form a highly combustible gas mixture. This gas mixture could flash or explode which may form a highly combustible gas mixture. This gas mixture could flash or explode, causing serious personal injury, if ignited by open flame, spark, welder's torch, lighted cigarette or other ignition source.

CONDITIONS OF SALE AND LIMITATION OF WARRANTY AND LIABILITY

| |
|---|
| <p>NOTICE: Read the entire Directions for Use and Conditions of Sale and Limitation of Warranty and Liability before buying or using this product. If the terms are not acceptable, return the product at once, unopened, and the purchase price will be refunded.</p> |
|---|

The Directions for Use of this product must be followed carefully. It is impossible to eliminate all risks inherently associated with the use of this product. Crop injury, ineffectiveness or other unintended consequences may result because of such factors as manner of use or application, weather or crop conditions, presence of other materials or other influencing factors in the use of the product, which are beyond the control of SYNGENTA CROP PROTECTION, Inc. or Seller. To the extent permitted by applicable law, Buyer and User agree to hold SYNGENTA and Seller harmless for any claims relating to such factors.

SYNGENTA warrants that this product conforms to the chemical description on the label and is reasonably fit for the purposes stated in the Directions for Use, subject to the inherent risks referred to above, when used in accordance with directions under normal use conditions. To the extent permitted by applicable law, (1) this warranty does not extend to the use of the product contrary to label instructions or under conditions not reasonably foreseeable to or beyond the control of Seller or SYNGENTA, and (2) Buyer and User assume the risk of any such use. To the extent permitted by applicable law, SYNGENTA MAKES NO WARRANTIES OF MERCHANTABILITY OR OF FITNESS FOR A PARTICULAR PURPOSE NOR ANY OTHER EXPRESS OR IMPLIED WARRANTY EXCEPT AS WARRANTED BY THIS LABEL.

To the extent permitted by applicable law, in no event shall SYNGENTA be liable for any incidental, consequential or special damages resulting from the use or handling of this product. **TO THE EXTENT PERMITTED BY APPLICABLE LAW, THE EXCLUSIVE REMEDY OF THE USER OR BUYER, AND THE EXCLUSIVE LIABILITY**

OF SYNGENTA AND SELLER FOR ANY AND ALL CLAIMS, LOSSES, INJURIES OR DAMAGES (INCLUDING CLAIMS BASED ON BREACH OF WARRANTY, CONTRACT, NEGLIGENCE, TORT, STRICT LIABILITY OR OTHERWISE) RESULTING FROM THE USE OR HANDLING OF THIS PRODUCT, SHALL BE THE RETURN OF THE PURCHASE PRICE OF THE PRODUCT OR, AT THE ELECTION OF SYNGENTA OR SELLER, THE REPLACEMENT OF THE PRODUCT.

SYNGENTA and Seller offer this product, and Buyer and User accept it, subject to the foregoing Conditions of Sale and Limitation of Warranty and Liability, which may not be modified except by written agreement signed by a duly authorized representative of SYNGENTA.

DIRECTIONS FOR USE

It is a violation of Federal law to use this product in a manner inconsistent with its labeling.

This product may be used to formulate products for specific uses(s) not listed on the MP label if the formulator, user group, or grower has complied with U.S. EPA data submission requirements regarding the support of such uses(s).

Only For Formulation into a Herbicide for the Following Uses:

| Terrestrial Food Crop and Nonfood | |
|--|---|
| airports/landing fields | parks |
| alfalfa, clover, grasses, and pastures | paved areas |
| berries, fruits, nuts, and vines | peanuts |
| Christmas tree plantations | petroleum tank farms |
| conservation compliance/conservation reserve program (CRP) | rangeland |
| corn, including glyphosate tolerant | recreational areas |
| cotton, including glyphosate tolerant | rights-of-way, fencerows, hedgerows |
| fallowland and postharvest | small grains |
| farmsteads | sorghum |
| grasses and grass seed production | soybeans, including glyphosate-tolerant |
| herbs | sugarcane |
| highways and roadsides | sunflower |
| industrial areas | turf |
| lumberyards | vegetables |
| ornamental woody shrubs, shade trees, and vines | wildlife habitat areas |
| outdoor buildings/structures | |

Aquatic Food Crop and Nonfood:

| | |
|-----------|------------------------|
| canals | reservoirs |
| ditches | rice |
| estuaries | rights-of-way |
| lakes | rivers |
| parks | streams |
| ponds | wildlife habitat areas |
| railroads | |

Greenhouse Food and Nonfood

Forestry

Domestic Outdoor:

| | |
|------------------|--------------------|
| along fences | recreational areas |
| around buildings | shrubs and trees |
| flowerbeds | vegetable gardens |
| patios | walkways |

STORAGE AND DISPOSAL

Do not contaminate water, food, feed, or seed by storage or disposal.

Pesticide Storage: Store in a cool, dry place.

Pesticide Disposal: Wastes resulting from the use of this product must be disposed of on site or at an approved waste disposal facility.

Container Disposal: Completely empty bag into application equipment. Then dispose of empty bag in a sanitary landfill or by incineration, or if allowed by state and local authorities, by burning. If burned, stay out of smoke.

Syngenta logo and the CP Frame trademarks of a Syngenta Group Company.

©200_ Syngenta

For non-emergency (e.g. current product information), call
Syngenta Crop Protection 1-800-334-9481

Manufactured for:
Syngenta Crop Protection, Inc.
P. O. Box 18300
Greensboro, North Carolina 27419-8300
www.syngenta-us.com

GLY ACID TEC 3 – pd – 06/02/08
000100-XXXXX.20080602.GLY-ACID-TEC3-NEW.pdf