

100-1147

12/17/2013

1/24

UNITED STATES ENVIRONMENTAL PROTECTION AGENCY
WASHINGTON, D.C. 20460



OFFICE OF
CHEMICAL SAFETY AND
POLLUTION PREVENTION

DEC 17 2013

Mr. Charles T. Levy
Syngenta Crop Protection, LLC
P.O. Box 18300
Greensboro, NC 27419

Subject: Amended label to add pollinator protection language
Product Name: Centric® 40WG
EPA Reg. No. 100-1147
EPA Decision No. 484071
Submission dated September 25, 2013; resubmission dated December 9, 2013

Dear Mr. Levy:

The labeling referred to above, submitted in connection with registration under the Federal Insecticide, Fungicide, and Rodenticide Act is acceptable. A stamped copy of your labeling is enclosed for your records. This labeling supersedes all previously accepted labeling. You must submit one (1) copy of the final printed labeling before you release the product for shipment with the new labeling. See 40 CFR 156.10(a)(6).

Under 40 CFR 152.130(d), EPA may establish dates by which all product distributed or sold by the registrant must bear revised labeling. The following paragraphs set forth the schedule for ensuring that that your product bears revised labeling within a reasonable time period:

- Any product released for shipment after 2/28/14 must bear the new label.

If these conditions are not complied with, EPA will take appropriate action against this registration. If you have any questions please contact Julie Chao at 703-308-8735 or chao.julie@epa.gov.

Regards,

A handwritten signature in black ink that reads "Venus Eagle".

Venus Eagle, Product Manager (01)
Insecticide-Rodenticide Branch
Registration Division (7505P)

2/24

(Master label)

Centric® 40WG

Insecticide

For control of listed insect pests infesting cotton, soybeans and tree nuts.

GROUP 4A INSECTICIDE

Active Ingredient:	
Thiamethoxam ¹	40.0%
Other Ingredients:	60.0%
Total:	100.0%

¹CAS No. 153719-23-4

Centric 40WG is a water-dispersible granule.

KEEP OUT OF REACH OF CHILDREN.

CAUTION

See additional precautionary statements and directions for use in booklet.

EPA Reg. 100-1147

EPA Est XXXX

Product of XXXX

Formulated in the USA

SCP 1147-MAS 0609 AMEND SEPT2013

Net Weight

ACCEPTED
DEC 17 2013

Under the Federal Insecticide, Fungicide,
and Rodenticide Act, as amended, for the
pesticide registered under:

EPA. Reg. No: 100-1147

FIRST AID	
If on skin or clothing	<ul style="list-style-type: none"> • Take off contaminated clothing. • Rinse skin immediately with plenty of water for 15-20 minutes. • Call a poison control center or doctor for treatment advice.
If swallowed	<ul style="list-style-type: none"> • Call a poison control center or doctor immediately for treatment advice. • Have a person sip a glass of water if able to swallow. • Do not induce vomiting unless told to do so by a poison control center or doctor. • Do not give anything by mouth to an unconscious person.
If in eyes	<ul style="list-style-type: none"> • Hold eye open and rinse slowly and gently with water for 15-20 minutes. Remove contact lenses, if present, after the first 5 minutes, then continue rinsing eye. • Call a poison control center or doctor for treatment advice
If inhaled	<ul style="list-style-type: none"> • Move person to fresh air. • If person is not breathing, call 911 or an ambulance, then give artificial respiration, preferably mouth-to-mouth, if possible. • Call a poison control center or doctor for treatment advice
Have the product container or label with you when calling a poison control center or doctor, or going for treatment.	
NOTE TO PHYSICIAN	
There is no specific antidote if Centric 40WG is ingested. Induce emesis or lavage stomach. Treat symptomatically.	
HOT LINE NUMBER	
For 24 Hour Medical Emergency Assistance (Human or Animal) or Chemical Emergency Assistance (Spill, Leak, Fire, or Accident) Call 1-800-888-8372	

PRECAUTIONARY STATEMENTS

Hazards to Humans and Domestic Animals

CAUTION

Harmful if absorbed through skin, swallowed or inhaled. Causes moderate eye irritation. Avoid contact with skin, eyes, or clothing. Avoid breathing vapor or spray mist. Wash thoroughly with soap and water after handling and before eating, drinking, chewing gum, or using tobacco. Remove contaminated clothing and wash before reuse.

4/
24

Personal Protective Equipment

Applicators and other handlers must wear:

- Long-sleeved shirt and long pants
- Chemical-resistant gloves – Category A (e.g., natural rubber ≥14 mils)
- Shoes plus socks
- Protective eyewear

Follow manufacturer's instructions for cleaning/maintaining PPE. If no such instructions exist for washables, use detergent and hot water. Keep and wash PPE separately from other laundry.

Engineering Control Statements

When handlers use closed systems, enclosed cabs, or aircraft in a manner that meets the requirements listed in the Worker Protection Standard (WPS) for agricultural pesticides [40 CFR 170.240(d)(4-6)], the handler PPE requirements may be reduced or modified as specified in the WPS.

User Safety Recommendations

Users should:

- Wash hands before eating, drinking, chewing gum, using tobacco, or using the toilet.
- Remove clothing immediately if pesticide gets inside. Then wash thoroughly and put on clean clothing.

Environmental Hazards

This pesticide is toxic to wildlife and highly toxic to aquatic invertebrates.

This pesticide is highly toxic to bees exposed to direct treatment on blooming crops/plants or weeds. Do not apply this product or allow it to drift to blooming crops/plants or weeds while bees are foraging in or adjacent to the treatment area.

Do not apply directly to water, or to areas where surface water is present, or to intertidal areas below the mean high water mark. Drift or runoff from treated areas may be hazardous to aquatic organisms in neighboring areas. Do not contaminate water when cleaning equipment or disposing of equipment washwater.

- **Surface Water Advisory**

This product may impact surface water quality due to spray drift and runoff of rain water. This is especially true for poorly draining soils and soils with shallow ground water. This product is classified as having high potential for reaching surface water via runoff for several months after application. A level, well-maintained vegetative buffer strip between areas to which this product is applied and surface water features such as ponds, streams, and springs will reduce the potential loading of thiamethoxam water from runoff water and sediment. Runoff of this product will be reduced by avoiding applications when rainfall is forecast to occur within 48 hours.

(See manual at the following Internet address:

<http://www.wsi.nrcs.usda.gov/products/W2Q/pest/core4.html>)

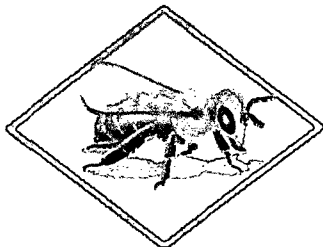
- **Ground Water Advisory**

Thiamethoxam has properties and characteristics associated with chemicals detected in ground water. The use of this chemical in areas where soils are permeable, particularly where the water table is shallow, may result in ground water contamination.

- **Spray Drift Advisory**

Do not allow this product to drift.

PROTECTION OF POLLINATORS



APPLICATION RESTRICTIONS EXIST FOR THIS PRODUCT BECAUSE OF RISK TO BEES AND OTHER INSECT POLLINATORS. FOLLOW APPLICATION RESTRICTIONS FOUND IN THE DIRECTIONS FOR USE TO PROTECT POLLINATORS.



Look for the bee hazard icon in the Directions for Use for each application site for specific use restrictions and instructions to protect bees and other insect pollinators.

This product can kill bees and other insect pollinators.

Bees and other insect pollinators will forage on plants when they flower, shed pollen, or produce nectar.

Bees and other insect pollinators can be exposed to this pesticide from:

- Direct contact during foliar applications, or contact with residues on plant surfaces after foliar applications
- Ingestion of residues in nectar and pollen when the pesticide is applied as a seed treatment, soil, tree injection, as well as foliar applications.

When Using This Product Take Steps To:

- Minimize exposure of this product to bees and other insect pollinators when they are foraging on pollinator attractive plants around the application site.
- Minimize drift of this product on to beehives or to off-site pollinator attractive habitat. Drift of this product onto beehives or off-site to pollinator attractive habitat can result in bee kills.

Information on protecting bees and other insect pollinators may be found at the Pesticide Environmental Stewardship website at:

<http://pesticidestewardship.org/PollinatorProtection/Pages/default.aspx>.

Pesticide incidents (for example, bee kills) should immediately be reported to the state/tribal lead agency. For contact information for your state, go to: www.aapco.org/officials.html. Pesticide incidents should also be reported to the National Pesticide Information Center at: www.npic.orst.edu or directly to EPA at: beekill@epa.gov

7/
24

Physical or Chemical Hazards

Do not use, pour, spill or store near heat or open flame.

CONDITIONS OF SALE AND LIMITATION OF WARRANTY AND LIABILITY

NOTICE: Read the entire Directions for Use and Conditions of Sale and Limitation of Warranty and Liability before buying or using this product. If the terms are not acceptable, return the product at once, unopened, and the purchase price will be refunded.

The Directions for Use of this product must be followed carefully. It is impossible to eliminate all risks inherently associated with the use of this product. Crop injury, ineffectiveness or other unintended consequences may result because of such factors as manner of use or application, weather or crop conditions, presence of other materials or other influencing factors in the use of the product, which are beyond the control of SYNGENTA CROP PROTECTION, LLC or Seller. To the extent permitted by applicable law, Buyer and User agree to hold SYNGENTA and Seller harmless for any claims relating to such factors.

SYNGENTA warrants that this product conforms to the chemical description on the label and is reasonably fit for the purposes stated in the Directions for Use, subject to the inherent risks referred to above, when used in accordance with directions under normal use conditions. To the extent permitted by applicable law: (1) this warranty does not extend to the use of the product contrary to label instructions, or under conditions not reasonably foreseeable to or beyond the control of Seller or SYNGENTA, and (2) Buyer and User assume the risk of any such use. **TO THE EXTENT PERMITTED BY APPLICABLE LAW, SYNGENTA MAKES NO WARRANTIES OF MERCHANTABILITY OR OF FITNESS FOR A PARTICULAR PURPOSE NOR ANY OTHER EXPRESS OR IMPLIED WARRANTY EXCEPT AS WARRANTED BY THIS LABEL.**

To the extent permitted by applicable law, in no event shall SYNGENTA be liable for any incidental, consequential or special damages resulting from the use or handling of this product. **TO THE EXTENT PERMITTED BY APPLICABLE LAW, THE EXCLUSIVE REMEDY OF THE USER OR BUYER, AND THE EXCLUSIVE LIABILITY OF SYNGENTA AND SELLER FOR ANY AND ALL CLAIMS, LOSSES, INJURIES OR DAMAGES (INCLUDING CLAIMS BASED ON BREACH OF WARRANTY, CONTRACT, NEGLIGENCE, TORT, STRICT LIABILITY OR OTHERWISE) RESULTING FROM THE USE OR HANDLING OF THIS PRODUCT, SHALL BE THE RETURN OF THE PURCHASE PRICE OF THE PRODUCT OR, AT THE ELECTION OF SYNGENTA OR SELLER, THE REPLACEMENT OF THE PRODUCT.**

SYNGENTA and Seller offer this product, and Buyer and User accept it, subject to the foregoing Conditions of Sale and Limitation of Warranty and Liability, which may not be modified except by written agreement signed by a duly authorized representative of SYNGENTA.

9/24

DIRECTIONS FOR USE

It is a violation of Federal law to use this product in a manner inconsistent with its labeling.

See individual crops for specific pollinator protection application restrictions. If none exist under the specific crop, for foliar applications, follow these application directions for crops that are contracted to have pollinator services or for food/feed crops & commercially grown ornamentals that are attractive to pollinators:



FOR CROPS UNDER CONTRACTED POLLINATION SERVICES

Do not apply this product while bees are foraging. Do not apply this product until flowering is complete and all petals have fallen unless the following condition has been met:

If an application must be made when managed bees are at the treatment site, the beekeeper providing the pollination services must be notified no less than 48-hours prior to the time of the planned application so that the bees can be removed, covered or otherwise protected prior to spraying.



FOR FOOD/FEED CROPS AND COMMERCIALLY GROWN ORNAMENTALS NOT UNDER CONTRACT FOR POLLINATION SERVICES BUT ARE ATTRACTIVE TO POLLINATORS

Do not apply this product while bees are foraging. Do not apply this product until flowering is complete and all petals have fallen unless one of the following conditions is met:

- The application is made to the target site after sunset
- The application is made to the target site when temperatures are below 55°F
- The application is made in accordance with a government-initiated public health response
- The application is made in accordance with an

active state-administered apiary registry program where beekeepers are notified no less than 48-hours prior to the time of the planned application so that the bees can be removed, covered or otherwise protected prior to spraying

- **The application is made due to an imminent threat of significant crop loss, and a documented determination consistent with an IPM plan or predetermined economic threshold is met. Every effort should be made to notify beekeepers no less than 48-hours prior to the time of the planned application so that the bees can be removed, covered or otherwise protected prior to spraying.**

Do not apply this product in a way that will contact workers or other persons, either directly or through drift. Only protected handlers may be in the area during application. For any requirements specific to your State or Tribe, consult the agency responsible for pesticide regulation.

Centric 40WG is a selective insecticide and its use is compatible with integrated pest management programs. However, Centric 40WG is toxic to bees exposed to direct treatment or to residue on blooming crops/plants and weeds. Do not apply Centric 40WG or allow it to drift onto blooming plants if bees are foraging in the treated area.

Do not use Centric 40WG in nurseries, greenhouses, plant propagation houses, or on any plants grown for use as transplants.

AGRICULTURAL USE REQUIREMENTS

Use this product only in accordance with its labeling and with the Worker Protection Standard, 40 CFR Part 170. This Standard contains requirements for the protection of agricultural workers on farms, forests, nurseries, and greenhouses, and handlers of agricultural pesticides. It contains requirements for training, decontamination, notification, and emergency assistance. It also contains specific instructions and exceptions pertaining to the statements on this label about personal protective equipment (PPE) and restricted-entry interval. The requirements in this box only apply to uses of this product that are covered by the Worker Protection Standard.

Do not enter or allow worker entry into treated areas during the restricted-entry interval (REI) of 12 hours.

PPE required for early entry to treated areas that is permitted under the Worker Protection Standard and that involves contact with anything that has been treated, such as plants, soil, or water is:

- Coveralls

11/24

- Chemical-resistant gloves – Category A (e.g., natural rubber ≥14 mils)
- Shoes plus socks
- Protective eyewear

FAILURE TO FOLLOW DIRECTIONS AND PRECAUTIONS ON THIS LABEL MAY RESULT IN CROP INJURY, POOR INSECT CONTROL, AND/OR ILLEGAL RESIDUES.

Centric 40WG controls many sucking and chewing insects through contact and ingestion on cotton, tree nuts and soybeans.

For best performance, always follow these directions:

- Centric 40WG should be applied when insect pest populations begin to build, but before populations reach economically damaging levels. Economic thresholds for pests controlled by Centric 40WG may be available from your local agricultural authorities.
- Centric 40WG is rapidly taken up into foliage after application. However, thorough spray coverage is essential for optimal performance. Apply Centric 40WG in sufficient water to ensure good coverage. See specific application information in the **Crop Use Directions** section of this label. The use of higher water volumes will generally result in better coverage, especially under adverse conditions (e.g. hot, dry) or where a dense plant canopy exists. The use of a spray adjuvant may improve spray coverage but is not required.
- Centric 40WG is rainfast once the spray solution has dried on treated plants.
- Centric 40WG has a wide margin of plant safety when used in accordance with this label.

Resistance Management

Centric 40WG belongs to the neonicotinoid class of chemistry (Group 4A Insecticide). Pests which are resistant to insecticides in other chemical classes are not known to be cross-resistant to Centric 40WG. However, insect pests are known to develop resistance to products used repeatedly. Because resistance development cannot be predicted, the use of this product should conform to sound resistance management strategies established for the crop and use area.

APPLICATION PROCEDURES AND SPRAY EQUIPMENT

Ground Application

Spray nozzles should be selected which will provide accurate and uniform spray deposition. Use spray nozzles that provide medium-sized droplets and reduce drift. To help insure accuracy, calibrate sprayer before each use. For information on spray equipment and calibration, consult nozzle manufacturers and / or State Extension Service specialists.

Apply Centric 40WG using sufficient water volume to provide thorough and uniform coverage. In situations where a dense canopy exists and/or pest pressure is high, use greater water volumes. The use of a spray adjuvant may increase spray coverage but is not required. Avoid making applications under conditions where uniform coverage cannot be obtained or where excessive spray drift may occur.

Precautions: (1) Use spray volumes of 3-10 gal./A. For optimum coverage and efficacy, a spray volume of 5 gals or greater per acre is recommended. (2) Select nozzles which produce the desired droplet sizes at the normal rated pressure range. (3) When spraying fine-sized droplets, carefully check all nozzles for flow and calibrate the sprayer. (4) The sprayer should travel at a uniform speed across the field. (5) Monitor environmental conditions and follow **Recommendations to Avoid Spray Drift** carefully.

Aerial Application

Apply Centric 40WG in water, using a minimum spray volume of 3 gals. /A. Increase spray volume where practical to improve coverage. Avoid making application under conditions where uniform coverage cannot be obtained or where excessive spray drift may occur.

Recommendations to Avoid Spray Drift

As with all crop protection products, it is important to avoid off-target movement. Do not allow spray to drift onto adjacent land, crops or aquatic areas. Follow these recommendations to avoid spray drift:

- Make applications when wind velocity favors on-target product deposition (Approximately 3 - 10 mph). Do not apply when wind velocity exceeds 10mph. Avoid applications when wind gusts approach 10mph.
- Risk of exposure to sensitive aquatic areas can be reduced by avoiding applications when wind direction is toward the aquatic area.
- Do not cultivate or plant crops within 25 ft. of the aquatic area as to allow growth of a vegetative filter strip.
- Do not make aerial applications during temperature inversions. Inversions are characterized by stable air and increasing temperatures with increased height above the ground. Mist or fog may indicate the presence of an inversion in humid areas. The applicator may detect the presence of an inversion by producing smoke and observing a smoke layer near the ground surface.
- Use the largest droplet size consistent with good pest control. Small droplets are more prone to spray drift, and can be minimized by appropriate nozzle selection, by orienting nozzles away from the air stream as much as possible, and by avoiding excessive spray boom pressure.

13/
24

- Apply as close to target plants as practical to obtain a good spray pattern for adequate coverage. Applications more than 10 ft. above the crop canopy should be avoided.
- For aerial applications, the spray boom should be mounted on the aircraft so as to minimize drift caused by wing tip vortices. The minimum practical boom length should be used and must not exceed 75% of wing span or rotor diameter.

14/24

MIXING PROCEDURES

Prepare no more spray mixture than is needed for the immediate operation. Thoroughly clean spray equipment before using this product. Vigorous agitation is necessary for proper dispersal of the product. Maintain maximum agitation throughout the spraying operation. Do not let the spray mixture stand overnight in the spray tank. Flush the spray equipment thoroughly following each use and apply the rinsate to a previously treated area. Keep product container tightly closed when not in use.

Centric 40WG Alone

Add 1/2 of the required amount of water to the mix tank. With the agitator running, add the desired amount of Centric 40WG to the tank. Continue agitation while adding the remainder of the water. Begin application of the solution after Centric 40WG has completely dispersed into the mix water. Maintain agitation until all of the mixture has been applied.

Centric 40WG + Tank Mixtures

Add 1/2 of the required amount of water to the mix tank. Start the agitator running before adding any tank mix partners. In general, tank mix partners should be added in this order: products packaged in water-soluble packaging, wettable powders, wettable granules (dry flowables) such as Centric 40WG, liquid flowables, liquids, emulsifiable concentrates and surfactants / adjuvants. Always allow each tank mix partner to become fully dispersed before adding the next product. Provide sufficient agitation while adding the remainder of the water. Maintain agitation until all the mixture has been applied.

Note: When using Centric 40WG in tank mixtures, all products in water-soluble packaging should be added to the tank before any other tank mix partner, including Centric 40WG. Allow the water-soluble packaging to completely dissolve and the product(s) to completely disperse before adding any other tank mix partner to the tank.

If using Centric 40WG in a tank mixture, observe all directions for use, crop/sites, use rates, dilution ratios, precautions, and limitations that appear on the tank mix product label. Do not exceed any label dosage rate, and follow the most restrictive label precautions and limitations. Do not mix Centric 40WG with any product that prohibits such mixing. Tank mixtures or other applications of products referenced on this label are permitted only in those states in which the referenced products are labeled.

Compatibility

Centric 40WG is compatible with most commonly used pesticides, crop oils, adjuvants, and nutritional sprays. However, since it is not possible to test all possible mixtures, the user should pre-test to assure the physical compatibility and lack of phytotoxic effect of any proposed mixtures with Centric 40WG. To determine the physical compatibility of Centric 40WG with other products, use a jar test, as described below.

Using a quart jar, add the proportionate amounts of the products to 1 qt. of water. Add wettable powders and water-dispersible granular products first, then liquid flowables, and emulsifiable concentrates last. After thoroughly mixing, let stand for at least 5

15/
24

minutes. If the combination remains mixed or can be remixed readily, it is physically compatible. Once compatibility has been proven, use the same procedure for adding required ingredients to the spray tank.

The crop safety of all potential tank mixes on all crops has not been tested. Before applying any tank mixture not specified on this label, the safety to the target crop should be confirmed.

CROP USE DIRECTIONS

Crop	Pest	Rate Per Acre Per Application	Use Restrictions
Cotton	Aphids	1.25 - 2.5 oz./A	Aphids: For best results, the low rate should not be used after first bloom or on rapidly increasing populations.
	Clouded plant bug Cotton fleahopper Tarnished plant bug (<i>Lygus lineolaris</i>)	1.25 - 2.5 oz./A	Clouded plant bug, Cotton fleahopper, and Tarnished plant bug: Control may require the use of two applications made at a 5 - 10 day interval.
	Brown stink bug (suppression only) Green stink bug Lygus bug (<i>Lygus Hesperus</i>) (suppression only) Southern green stink bug Thrips Whiteflies	2.0 - 2.5 oz./A	Stink bugs, Thrips, and Whiteflies: Control may require the use of two applications made at a 5 - 10 day interval.

Use Restrictions:

- **Maximum Centric 40WG Allowed per Growing Season:** Do not exceed a total of 5.0 oz. of Centric 40WG (0.125 lbs. a.i.) /A during the growing season.
- **Application Timing:** Apply before pests reach damaging levels. Scout fields and treat again if populations rebuild to potentially damaging levels. Apply higher rates within the specified rate range for heavy infestations. Do not apply this product within 45 days of planting if cottonseeds were treated with a neonicotinoid product.
- **Pre-Harvest Interval (PHI):** 21 Days.
- **Minimum Interval Between Applications:** Allow at least 5 days between applications.
- **Water Volume:** Use sufficient water volume to ensure thorough coverage of foliage. Do not use less than 10 GPA for ground applications and 3 GPA for aerial applications.

17/24

Crop	Pest	Rate Per Acre Per Application	Use Restrictions
Soybean	Aphids	1.5 – 2.0 oz./A	
	Brown stink bug (suppression only) Green stink bug Red banded stink bug Southern green stink bug	2.0 – 2.5 oz./A	Stink Bugs: Control may require the use of two applications made at a 7 to 10 day interval.

Use Restrictions:

- **Maximum Centric 40WG Allowed per Growing Season:** Do not exceed a total of 5.0 oz. of Centric 40WG (0.125 lb. a.i.) per acre during the growing season.
- **Application Timing:** Apply before pests reach damaging levels. Scout fields and treat again if populations rebuild to potentially damaging levels. Apply higher rates within the specified rate range for heavy infestations.
- **Pre-Harvest Interval (PHI):** 21 Days
- **Maximum Centric 40WG Allowed per Growing Season:** Do not exceed a total of 5.0 oz. of Centric 40WG (0.125 lb. a.i.) per acre during the growing season.
- **Minimum Interval Between Applications:** Allow at least 7 days between applications.
- **Water Volume:** Use sufficient water volume to ensure thorough coverage of foliage. Do not use less than 10 GPA for ground applications or 3 GPA for aerial applications.
- **Do Not** allow livestock to graze in treated areas or harvest treated soybean forage, straw or hay as feed for meat or dairy animals. **Do not** feed treated soybean fodder or silage to meat or dairy animals.

Crop	Pest	Rate per Acre per Application	Remarks
TREE NUTS (including pistachio) Almond Beech Nut Brazil Nut Butternut Cashew Chestnut Chinquapin Filbert (Hazlenut) Hickory Nut Macadamia Nut (Bush Nut) Pecan Pistachio Walnut, Black Walnut, English (Persian)	Blackmargined aphid Lygus Bug (<i>Lygus Hesperus</i>) (suppression only) Pecan <i>phylloxera</i> Red Shoulder Stink Bug Walnut aphid Yellow pecan aphid	2.0 – 2.5 oz./A	Pecan <i>phylloxera</i>: Apply treatment after egg hatch, before nymphs are in galls. This usually occurs after bud break when 1–2 inches of new growth is present.
	Black pecan aphid	2.5 oz./A	

Use Restrictions:

- **Maximum Centric 40WG Allowed per Growing Season:** Do not exceed a total of 5.0 oz. of Centric 40WG (0.125 lb. a.i.) /A of Centric 40WG or 0.125 lb. a.i. of thiamethoxam-containing products per acre per growing season.
- **Application Timing:** Apply before pests reach damaging levels. Scout fields and treat again if populations rebuild to potentially damaging levels.
- **Pre-Harvest Interval (PHI):** 14 days
- **Minimum Interval between Applications:** Allow at least 7 days between applications.
- **Water Volume:** Use sufficient water volume to ensure thorough coverage of foliage. Do not use less than 50 GPA for ground application or 20 GPA for aerial application.



Pollinator Precautions:

Centric 40WG is highly toxic to bees exposed to direct treatment or residues on blooming crops. Do not apply during pre-bloom or during bloom when bees are foraging. Do not apply Centric 40WG or allow it to drift to blooming crops if bees are foraging in or adjacent to the treatment area. This is especially critical if there are adjacent orchards that are blooming. **After a Centric 40WG application, wait at least 5 days before placing beehives in the treated field.** If bees are foraging in the ground cover and it contains any blooming plants or weeds, always remove flowers before making an application. This may be accomplished by mowing, disking, mulching, flailing, or applying a labeled herbicide. Consult with your local cooperative extension

19/
24

service or state agency responsible for regulating pesticide use for additional pollinator safety practices.

Rotational Restrictions

Treated areas may be replanted immediately following harvest, or as soon as practical following the last application, with any crop listed on this label or to barley, *Brassica* (cole) vegetables, canola, corn, cucurbit, fruiting vegetables, leafy vegetables, legume vegetables, mint (peppermint and spearmint), oilseed crops (black mustard seed, borage seed, crambe seed, field mustard seed, flax seed, Indian mustard seed, Indian rapeseed, rapeseed, safflower seed), root vegetables (except sugarbeet), sorghum, strawberry, sunflower, tobacco, tuberous and corm vegetables, and wheat. Any cover crop planted for erosion control or soil improvement may be planted as soon as practical following the last application. However, the cover crop may not be grazed or harvested for food or feed. For all other crops, a 120-day plant-back interval must be observed.

STORAGE AND DISPOSAL

Do not contaminate water, food, or feed by storage or disposal.

Pesticide Storage

Store in a cool dry place.

For minor spills, leaks, etc., follow all precautions indicated on this label and clean up immediately. Take special care to avoid contamination of equipment and facilities during cleanup, procedures and disposal of wastes.


Pesticide Disposal

Pesticide wastes are toxic. Improper disposal of unused pesticide, spray mixture, or rinse water is a violation of Federal law. If these wastes cannot be used according to label instructions, contact your State Pesticide or Environmental Control Agency, or the Hazardous Waste representative at the nearest EPA Regional Office for guidance in proper disposal methods.

Container Handling

Non-refillable container. Do not reuse or refill this container. Offer for recycling if available. Triple rinse container (or equivalent) promptly after emptying. Triple rinse as follows: Empty the remaining contents into application equipment or a mix tank. Fill the container ¼ full with water and recap. Shake for 10 seconds. Pour rinsate into application equipment or mix tank or store rinsate for later use and disposal. Drain for 10 seconds after the flow begins to drip. Repeat this procedure two more times. Then offer for recycling if available or puncture and dispose of in a sanitary landfill, or by incineration, or, if allowed by state and local authorities, by burning. If burned, stay out of smoke.

20/
24

Centric® 40WG, the Syngenta logo and the CP FRAME  are trademarks of a Syngenta Group Company

©200X Syngenta

For non-emergency (e.g., current product information) call
Syngenta Crop Protection at 1-800-334-9481.

Manufactured for:
Syngenta Crop Protection, LLC
P.O. Box 18300
Greensboro, North Carolina 27419-8300

SCP 1147-MAS 0609 AMEND SEPT2013

21/24

(Non-detachable Container Label)

Centric® 40WG

Insecticide

GROUP 4A INSECTICIDE

For control of listed insect pests infesting cotton, soybeans and tree nuts.

Active Ingredient:	
Thiamethoxam ¹	40.0%
Other Ingredients:	60.0%
Total:	100.0%

¹CAS No. 153719-23-4

Centric 40WG is a water-dispersible granule.

KEEP OUT OF REACH OF CHILDREN.

CAUTION

See directions for use and additional precautionary statements in booklet.

AGRICULTURAL USE REQUIREMENTS

Use this product only in accordance with its labeling and with the Worker Protection Standard, 40 CFR Part 170. Refer to supplemental labeling under "Agricultural Use Requirements" in the Directions for Use section for information about this standard.

EPA Reg. No. 100-1147

EPA Est. XXXX

SCP 1147-MAS 0609 AMEND SEPT2013

Net Weight

FIRST AID	
If on skin or clothing	<ul style="list-style-type: none">• Take off contaminated clothing.• Rinse skin immediately with plenty of water for 15-20 minutes.• Call a poison control center or doctor for treatment advice.
If swallowed	<ul style="list-style-type: none">• Call a poison control center or doctor immediately for treatment advice.• Have a person sip a glass of water if able to swallow.• Do not induce vomiting unless told to do so by a poison control center or doctor.• Do not give anything by mouth to an unconscious person.
If in eyes	<ul style="list-style-type: none">• Hold eye open and rinse slowly and gently with water for 15-20 minutes. Remove contact lenses, if present, after the first 5 minutes, then continue rinsing eye.• Call a poison control center or doctor for treatment advice
If inhaled	<ul style="list-style-type: none">• Move person to fresh air.• If person is not breathing, call 911 or an ambulance, then give artificial respiration, preferably mouth-to-mouth, if possible.• Call a poison control center or doctor for treatment advice
Have the product container or label with you when calling a poison control center or doctor, or going for treatment.	
NOTE TO PHYSICIAN There is no specific antidote if Centric 40WG is ingested. Induce emesis or lavage stomach. Treat symptomatically.	
HOT LINE NUMBER For 24 Hour Medical Emergency Assistance (Human or Animal) or Chemical Emergency Assistance (Spill, Leak, Fire, or Accident), Call 1-800-888-8372	

PRECAUTIONARY STATEMENTS

Hazards to Humans and Domestic Animals

CAUTION

Harmful if absorbed through skin, swallowed or inhaled. Causes moderate eye irritation. Avoid contact with skin, eyes, or clothing. Avoid breathing vapor or spray mist. Wash thoroughly with soap and water after handling and before eating, drinking, chewing gum, or using tobacco. Remove contaminated clothing and wash before reuse.

Environmental Hazards

This pesticide is toxic to wildlife and highly toxic to aquatic invertebrates.

This pesticide is highly toxic to bees exposed to direct treatment on blooming crops/**plants or weeds**. Do not apply this product or allow it to drift to blooming crops/**plants or weeds while bees are foraging in or adjacent to the treatment area**.

Do not apply directly to water, or to areas where surface water is present, or to intertidal areas below the mean high water mark. Drift or runoff from treated areas may be hazardous to aquatic organisms in neighboring areas. Do not contaminate water when cleaning equipment or disposing of equipment washwater.

- **Surface Water Advisory**

This product may impact surface water quality due to spray drift and runoff of rain water. This is especially true for poorly draining soils and soils with shallow ground water. This product is classified as having high potential for reaching surface water via runoff for several months after application. A level, well-maintained vegetative buffer strip between areas to which this product is applied and surface water features such as ponds, streams, and springs will reduce the potential loading of thiamethoxam water from runoff water and sediment. Runoff of this product will be reduced by avoiding applications when rainfall is forecast to occur within 48 hours. (See manual at the following Internet address:
<http://www.wsi.nrcs.usda.gov/products/W2Q/pest/core4.html>)

- **Ground Water Advisory**

Thiamethoxam has properties and characteristics associated with chemicals detected in ground water. The use of this chemical in areas where soils are permeable, particularly where the water table is shallow may result in ground water contamination.

- **Spray Drift Advisory**

Do not allow this product to drift.

Physical or Chemical Hazards

Do not use, pour, spill or store near heat or open flame.

STORAGE AND DISPOSAL

Do not contaminate water, food, or feed by storage or disposal.

Pesticide Storage

Store in a cool dry place.

For minor spills, leaks, etc., follow all precautions indicated on this label and clean up immediately. Take special care to avoid contamination of equipment and facilities during cleanup, procedures and disposal of wastes.

Pesticide Disposal

Pesticide wastes are toxic. Improper disposal of unused pesticide, spray mixture, or rinse water is a violation of Federal law. If these wastes cannot be used according to label instructions, contact your State Pesticide or Environmental Control Agency, or the Hazardous Waste representative at the nearest EPA Regional Office for guidance in proper disposal methods.

Container Handling

Non-refillable container. Do not reuse or refill this container. Offer for recycling if available. Triple rinse container (or equivalent) promptly after emptying. Triple rinse as follows: Empty the remaining contents into application equipment or a mix tank. Fill the container ¼ full with water and recap. Shake for 10 seconds. Pour rinsate into application equipment or mix tank or store rinsate for later use and disposal. Drain for 10 seconds after the flow begins to drip. Repeat this procedure two more times. Then offer for recycling if available or puncture and dispose of in a sanitary landfill, or by incineration, or, if allowed by state and local authorities, by burning. If burned, stay out of smoke.

Centric® 40WG and the Syngenta logo are trademarks of a Syngenta Group Company

©200X Syngenta

Manufactured for:

Syngenta Crop Protection, LLC
P.O. Box 18300
Greensboro, North Carolina 27419-8300

SCP 1147-MAS 0609 AMEND SEPT2013

CENTRIC 40WG 1147 MAS 0609 AMEND SEP2013 CLEAN POLL-dk-09/26/13
000100-01147.20130912.CENTRIC-40WG_AMEND_SEPT2013-CLEAN.pdf

CENTRIC 40WG 1147 MAS 0609 AMEND SEP2013 POLL VERSION B-CLEAN-dk-11/27/13
000100-01147.20130912.B.CENTRIC-40WG_AMEND_SEPT2013-CL.pdf

CENTRIC 40WG 1147 MAS 0609 AMEND SEP2013 POLL VERSION CLEAN-dk-12/05/13
000100-01147.20130912.C.CENTRIC-40WG_AMEND_SEPT2013-CL.pdf