

539749

MAR 26 1998

Ms. Carolyn Brinkley
Novartis Crop Protection, Inc.
P.O. Box 18300
Greensboro, N.C. 27419

Dear Ms. Brinkley:

Subject: Revise per Agency letter dated November 4, 1997
D.z.n diazinon AG600 WBC
EPA Registration Number 100-784
Your submission dated March 19, 1998

The labeling referred to above, submitted in connection a with registration under FIFRA section 3(c)(7)(a), is acceptable and a stamped copy is enclosed for your records.

The Agency suggests the following revisions at the next label printing:

- 1) For Apricots, in the Rate column for Olive Scale Crawlers and for Apricot Mealybugs, for consistency with the rest of the label, revise "per 100 gals." to "in 100 gals."
- 2) For Blueberries, the Agency notes that this label gives the Rate only in amount per acre (which you have stated is the growers' preference). The Agency believes the amount in 100 gallons of water (as presented on the AG500 label) is also useful, especially given the fact that the directions for Fire Ants tells the user to apply 1 gallon of the diluted mixture (difficult if the dilution isn't given, as on this AG600 label). There may be merit in expanding the Rate column entries for both of these groups (or at the very least for Fire Ants) on the AG600 label to read "12 3/4 fl. oz. in 100 gals. of water or 25 1/2 fl. oz./A".
- 3) For Caneberries, for Leafhoppers and for Dryberry Mites in the Timing/Special Directions revise "(200 gals./A maximum)" to "(200 gals. of water/A maximum)" [as shown on your diazinon 50W label]. Also, the AG600 label gives the Rate as amount per acre "in 100 gals. of water". This appears to be

redundant given the **Timing/Special Directions**. For other fruit and nut crops on the AG600 label, the rate per acre appears alone if the water amount is given in the **Timing/Special Directions** or **Notes**. Alternatively, your diazinon 50W label gets around this by relocating the water minimum and maximum out of the **Timing/Special Directions** and placing that information in the **Rate** column for these pests.

- 4) For Caneberries, for Raspberry Crown Borers the **Timing/Special Directions** indicate the amount to be applied in a minimum of 100 gals. of water but no maximum is given as is the case for the previous two pest group entries for this same crop. Should a maximum be indicated? Presumably this would also be 200 gallons of water per acre.

Sincerely,

George T. LaRocca
Product Manager 13
Insecticide/Rodenticide Branch
Registration Division (7505C)

3 of 23
ACCEPTED

MAR 26 1998

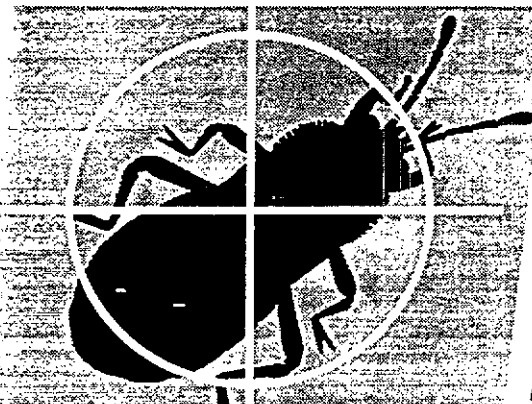
Under the Federal Insecticide, Fungicide, and Rodenticide Act, as amended, for the pesticide registered under EPA Reg. No. 100-784

PULL HERE TO OPEN

RESTRICTED USE PESTICIDE
DUE TO AVIAN AND AQUATIC TOXICITY

FOR RETAIL SALE TO AND USE BY CERTIFIED APPLICATORS OR PERSONS UNDER THEIR DIRECT SUPERVISION, AND ONLY FOR THOSE USES COVERED BY THE CERTIFIED APPLICATOR'S CERTIFICATION.

D·z·n[®] diazinon
AG600 WBC



INSECTICIDE

Water-Based Concentrate

This product must not be used on golf courses and sod farms.

For control of certain insects on fruits, nuts, vegetables, field crops, lawns, and ornamentals

KEEP OUT OF REACH OF CHILDREN.

CAUTION

See additional precautionary statements and directions for use inside booklet.

Active Ingredient:	
Diazinon: O,O-Diethyl O-(2-isopropyl-6-methyl-4-pyrimidinyl) phosphorothioate. . . .	56.0%
Inert Ingredients:	44.0%
Total:	100.0%



Low Odor - Contains Novartis Diazinon

SHAKE CONTENTS WELL BEFORE USING.

EPA Reg. No. 100-784
EPA Est. 70404-AL-001

NCP 784A-L1E 0198

2.5 GALLONS
U.S. Standard Measure

NOVARTIS

DIRECTIONS FOR USE AND CONDITIONS OF SALE AND WARRANTY

IMPORTANT: Read the entire Directions for Use and the Conditions of Sale and Warranty before using this product. If terms are not acceptable, return the unopened product container at once.

CONDITIONS OF SALE AND WARRANTY

The Directions for Use of this product reflect the opinion of experts based on field use and tests. The directions are believed to be reliable and should be followed carefully. However, it is impossible to eliminate all risks inherently associated with use of this product. Crop injury, ineffectiveness, or other unintended consequences may result because of such factors as weather conditions, presence of other materials, or the manner of use or application all of which are beyond the control of Novartis Crop Protection, Inc. or the Seller. All such risks shall be assumed by the Buyer.

Novartis warrants that this product conforms to the chemical description on the label and is reasonably fit for the purposes referred to in the Directions for Use subject to the inherent risks referred to above. **Novartis makes no other express or implied warranty of Fitness or Merchantability or any other express or implied warranty. In no case shall Novartis or the Seller be liable for consequential, special, or indirect damages resulting from the use or handling of this product.** Novartis and the Seller offer this product, and the Buyer and user accept it, subject to the foregoing Conditions of Sale and Warranty, which may be varied only by agreement in writing signed by a duly authorized representative of Novartis.

DIRECTIONS FOR USE

It is a violation of Federal law to use this product in a manner inconsistent with its labeling.

To avoid spray drift, do not apply under windy conditions. Avoid spray overlap, since crop or plant injury may result.

Do not apply this product in a way that will contact workers or other persons, either directly or through drift. Only protected handlers may be in the area during application. For any requirements specific to your State or Tribe, consult the agency responsible for pesticide regulation.

AGRICULTURAL USE REQUIREMENTS

Use this product only in accordance with its labeling and with the Worker Protection Standard, 40 CFR part 170. This Standard contains requirements for the protection of agricultural workers on farms, forests, nurseries, and greenhouses, and handlers of agricultural pesticides. It contains requirements for training, decontamination, notification, and emergency assistance. It also contains specific instructions and exceptions pertaining to the statements on this label about personal protective equipment (PPE), and restricted-entry interval. The requirements in this box only apply to uses of this product that are covered by the Worker Protection Standard.

Do not enter or allow worker entry into treated areas during the restricted entry interval (REI). Exception: If the product is soil-injected or soil-incorporated, the Worker Protection Standard, under certain circumstances, allows workers to enter the treated area if there will be no contact with anything that has been treated.

PPE required for early entry into treated areas that is permitted under the Worker Protection Standard and that involves contact with anything that has been treated, such as plants, soil, or water is: coveralls, waterproof gloves, and shoes plus socks.

NON-AGRICULTURAL USE REQUIREMENTS

The requirements in this box apply to uses of this product that are NOT within the scope of the Worker Protection Standard for agricultural pesticides (40 CFR Part 170). The WPS applies when this product is used to produce agricultural plants on farms, forests, nurseries, or greenhouses.

Do not permit children or pets to go onto treated areas until sprays have dried.

FAILURE TO FOLLOW THE DIRECTIONS FOR USE AND PRECAUTIONS ON THIS LABEL MAY RESULT IN POOR INSECT CONTROL, CROP INJURY, OR ILLEGAL RESIDUES.

GENERAL INFORMATION

D-z-n diazinon AG600 WBC is a water-based concentrate which, when diluted with water according to the directions, is intended for the control of insect pests of agricultural crops and other plants. Do not use on food crops grown in greenhouses. Do not use in barns or dwellings. Do not use on livestock.

In the directions for use which follow, best control is obtained when application is made at first sign of pests. Application should be repeated only as directed to maintain control.

WORK SAFETY RULES

REPEATED EXPOSURES TO CHOLINESTERASE INHIBITORS SUCH AS ARE CONTAINED IN THIS PRODUCT MAY, WITHOUT WARNING, CAUSE PROLONGED SUSCEPTIBILITY TO VERY SMALL DOSES OF ANY CHOLINESTERASE INHIBITOR.

When handling D-z-n diazinon AG600 WBC, do not rub eyes or mouth with hands. If you feel sick in any way, STOP work and get help right away. See Practical Treatment section of this label.

Note: The California Department of Agriculture has set a 5-day reentry period for diazinon on grapes, peaches, and nectarines. Five days should elapse between the time of application and the time a worker may enter the field to engage in any activity requiring substantial contact with treated foliage. When a mixture of 2 or more organophosphate pesticides are applied in combination, the interval should be prolonged by adding to the largest applicable interval an additional 50% of that interval.

SPRAY EQUIPMENT

Applications of D-z-n diazinon AG600 WBC using sufficient water volume to provide thorough and uniform coverage generally provide the most effective pest control.

To avoid spray drift, do not apply when conditions favor drift from beyond the target area. Avoid overlap because crop injury may occur.

Equip sprayers with nozzles that provide accurate and uniform application. Be certain that nozzles are the same size and uniformly spaced across the boom. Calibrate sprayer before use.

For more information on spray equipment and calibration, consult sprayer manufacturer's and state recommendations. For specific local directions and spray schedules, consult your local or state agricultural authorities.

MIXING PROCEDURES

Thoroughly clean spray equipment before using this product. Prepare only the amount of spray mixture needed for the immediate application. Vigorous agitation is necessary for proper dispersal of this product. Maintain maximum agitation throughout the spraying operation. Do not let the spray mixture stand in the spray tank overnight. Flush the spray equipment thoroughly following each use.

1. D-z-n diazinon AG600 WBC Alone:

Add 1/2 of the required amount of water to the mix tank. With the agitator running, add the D-z-n diazinon AG600 WBC to the tank. Continue agitation while adding the remainder of the water. Begin application of the solution after the D-z-n diazinon AG600 WBC has completely dispersed into the mix water. Maintain agitation until all of the mixture has been applied.

2. D-z-n diazinon AG600 WBC In Tank-Mixtures:

Note: Do not mix D-z-n diazinon AG600 WBC with any formulation of Captan® or Captec® because crop injury may occur.

D-z-n® diazinon AG600 WBC

D-z-n diazinon AG600 WBC is compatible with most insecticide and fungicide products; however, physical compatibility with tank-mix partners should be tested before use. Using a quart jar, add the proportionate amounts of each product to 1 qt. of water. Add wettable powders and water-dispersible granular products first, then liquid flowables, and emulsifiable concentrates last. After thoroughly mixing, let stand for at least 5 minutes. If the combination remains mixed or can be readily remixed, the products are compatible.

Once compatibility has been proven, add 1/2 of the required amount of water to the mix tank. Start the agitator running before adding any tank-mix partners. Add tank-mix partners in this order: all products in water-soluble packaging, wettable powders, wettable granules (dry flowables), liquid flowables, liquids, and emulsifiable concentrates. Always allow each tank-mix partner to fully disperse before adding the next product. Maintain sufficient agitation while adding the remainder of the water and until all of the mixture has been applied.

When using D-z-n diazinon AG600 WBC in tank-mixture, observe all directions for use, crop/sites, use rates, dilution ratios, precautions, and limitations which appear on the tank-mix products' labels. Confirm that the tank-mixture is safe to the crop by spraying a small area first, and evaluating crop safety after an appropriate period. Do not treat larger areas until crop safety has been confirmed.

AERIAL APPLICATION

Avoid application when uniform coverage will not result or when excessive spray drift may occur. Do not allow product to contact animals or unprotected persons.

CHEMIGATION (APPLICATION THROUGH AN IRRIGATION SYSTEM)

D-z-n diazinon AG600 WBC may be applied alone or in combination with other pesticides registered for application through sprinkler (including center pivot lateral move, end tour side (wheel) roll, traveler, big gun, solid set or hand move) or drip (trickle) irrigation systems (including surface and subsurface). Do not apply this product through any other type of irrigation system. To insure compatibility, pour the products into a small container of water in the correct proportions. After thorough mixing, let stand for 5 minutes. If the combination remains mixed, or can be remixed readily, the mixture is compatible.

Crop injury, lack of effectiveness, or illegal pesticide residues in the crop can result from non-uniform distribution of treated water. If you have questions about calibration, you should contact State Extension Service specialists, equipment manufacturers, or other experts.

Do not connect the irrigation system used for pesticide application to a public water system, unless the pesticide label-prescribed safety devices for public water systems are in place. A person knowledgeable of the chemigation system and responsible for its operation, or under the supervision of the responsible person, shall shut the system down and make necessary adjustments if the need arises.

Chemigation Systems Connected to Public Water Systems

1. Public water system means a system for the provision to the public of piped water for human consumption if such system has at least 15 service connections or regularly serves an average of at least 25 individuals daily at least 60 days out of the year.
2. Chemigation systems connected to public water systems must contain a functional, reduced-pressure zone, backflow preventer (RPZ) or the functional equivalent in the water supply line upstream from the point of pesticide introduction. As an option to the RPZ, the water from the public water system should be discharged into a reservoir tank prior to pesticide introduction. There shall be a complete physical break (air gap) between the outlet end of the fill pipe and the top or overflow rim of the reservoir tank of at least twice the inside diameter of the fill pipe.

Sprinkler and Drip (Trickle) Chemigation

1. The system must contain a functional check-valve, a vacuum relief valve, and low pressure drain appropriately located on the irrigation pipeline to prevent water source contamination from backflow.
2. The pesticide injection pipeline must contain a functional, automatic, quick-closing check-valve to prevent the flow of fluid back toward the injection pump.
3. The pesticide injection pipeline must also contain a functional, normally closed, solenoid-operated valve located on the intake side of the injection pump and connected to the system interlock to prevent fluid from being withdrawn from the supply tank when the irrigation system is either automatically or manually shut down.
4. The system must contain functional interlocking controls to automatically shut off the pesticide injection pump when the water pump motor stops.
5. The irrigation line or water pump must include a functional pressure switch which will stop the water pump motor when the water pressure decreases to the point where pesticide distribution is adversely affected.
6. Systems must use a metering pump, such as a positive displacement injection pump (e.g., diaphragm pump) effectively designed and constructed of materials that are compatible with pesticides and capable of being fitted with a system interlock.
7. Do not use sprinkler chemigation when wind speed favors drift beyond the area intended for treatment.

Operating Instructions

1. Determine the acreage to be treated by the system.
2. Measure the appropriate amount of D-z-n diazinon AG600 WBC needed to treat the acreage to be treated. Refer to the specific directions for use for the application rate and the amount of water per acre.
3. Add the pre-measured D-z-n diazinon AG600 WBC to the chemigation system supply tank and dilute with water if needed. Proper agitation is needed if D-z-n diazinon AG600 WBC is tank mixed with other pesticides registered for sprinkler or drip chemigation.
4. Start the irrigation system and bring the system up to full pressure, making certain that all sprinkler heads are functioning properly.
5. Engage the chemigation injection or venturi system to add the D-z-n diazinon AG600 WBC to the irrigation lines.
6. Continue to run irrigation system for a few minutes after supply tank is empty to allow material in the irrigation lines to reach the sprinkler heads furthest from the chemigation injection point.

Note: When treatment with D-z-n diazinon AG600 WBC has been completed, further field irrigation over the treated area should be avoided for 48 hours to prevent washing the product off of the crop.

Apply D-z-n diazinon AG600 WBC only in sufficient irrigation water to achieve thorough plant coverage. Excess water will wash the product from the plant, resulting in poor control.

D-z-n® diazinon AG600 WBC

To avoid a hazard to animals, wells, or adjoining crops, do not allow irrigation water to collect or runoff.

FRUIT AND NUT CROPS

REI - 24 hours

Ground/Aerial Application

D-z-n diazinon AG600 WBC may be applied using ground or aerial application equipment as specified in Table 1. Table 1 indicates the minimum amount of water that can be used for the method of application. Table 2 lists the preharvest interval (PHI) for each crop.

Table 1.

Crop	Aerial Application Minimum Gals./Acre	Ground Application Minimum Gals./Acre	
		Dilute	Concentrate
Almonds*	20	100	20
Apples	20	100	20
Apricots	20	100	20
Blackberries**	20	100	20
Blueberries	20	100	20
Boysenberries**	20	100	20
Cherries	20	100	20
Cranberries	5	15	—
Dewberries**	20	100	20
Grapes	20	100	20
Loganberries**	20	100	20
Nectarines	20	100	20
Peaches	20	100	20
Pears	20	100	20
Plums	20	100	20
Prunes	20	100	20
Raspberries**	20	100	20
Strawberries	20	100	20
Walnuts*	20	100	20

*CA only.

**CA, CR, or WA only.

Table 2.

Observe stated time intervals between last application and harvest, as well as intervals between applications and total amount of product that can be applied per season.

Crop	PHI*
Almonds	**
Apricots	21
Blackberries	7
Blueberries	7
Boysenberries	7
Cherries	21
Cranberries	7
Dewberries	7
Grapes	28
Loganberries	7
Nectarines	21
Peaches	21
Pears	21
Plums, Prunes	21
Raspberries	7
Strawberries	5
Walnuts	45

*PHI = Pre-Harvest Interval or the number of days to wait between the last application and harvest.

** = Dormant spray only.

Note: To protect bees, do not apply to fruit trees when trees or substantial numbers of weeds in the orchard are in bloom.

D-z-n® diazinon AG600 WBC

FRUIT TREES – VOLUME OF WATER AND APPLICATION RATES

The rate of D-z-n diazinon AG600 WBC for aerial spray or concentrated spray applied to fruit trees by ground equipment is based on a dilute full cover spray applied with conventional ground equipment at a rate of 300-400 gals. of water per acre. The specific amount of product to be used appears under the separate directions for use for each crop. In no case should the amount of product per acre treated exceed the maximum amount per acre per application that is specified in the Timing/Special Directions or the Notes for individual crops.

Crop	Pest	Rate	Timing/Special Directions
Almonds (CA only)	San Jose Scale, Parlatoria Scale	12 ³ / ₄ -19 fl. oz. + 2-3 gals. dormant oil or 1-1 ¹ / ₂ gals. superior type oil in 100 gals. of water	Apply only as a single dormant spray. Do not apply more than 76 ¹ / ₂ oz. of diazinon or 9 gals. of oil per acre.
Apples	Codling Moths, Rosy Apple Aphids, Green Apple Aphids, Woolly Apple Aphids, Plum Curculio	12 ³ / ₄ fl. oz. in 100 gals. of water	Begin treatment when infestations first occur. Do not repeat applications closer than 14 days. Do not apply after petal fall.
	San Jose Scale Crawlers, Forbes Scale Crawlers	12 ³ / ₄ fl. oz. in 100 gals. of water	Apply early in the season when crawlers first appear. If infestation warrants, make a second application 14 days later. Do not apply after petal fall.
	San Jose Scale, Parlatoria Scale, Black Scale, Brown Scale, Apricot Scale, European Red Mite Eggs, Brown Mite Eggs, Twig Borers, Apple Aphid Eggs, Black Cherry Aphid Eggs, Mealy Plum Aphid Eggs, Mealybugs	12 ³ / ₄ fl. oz. + 2 gals. dormant oil or 1-1 ¹ / ₂ gals. superior type oil in 100 gals. of water	Apply only as a dormant or delayed dormant spray. Do not apply more than 51 fl. oz. of product or 6 gals. of oil per acre per application.
	Leafhoppers	12 ³ / ₄ fl. oz. in 100 gals. of water	Apply at petal fall. Do not apply after petal fall.
	Eyespotted Bud Moths, Fruit Tree Leafrollers, Mealybugs	12 ³ / ₄ fl. oz. in 100 gals. of water	Begin treatment at pink stage. Do not repeat application closer than 14 days. Do not apply after petal fall.
Notes: (1) Do not apply more than 51 fl. oz. of product per acre per application and no more than 153 fl. oz. of product per acre per season. (2) Do not apply after petal fall.			
Apricots	Aphids, Brown Mites (Clover Mites), Two-spotted Spider Mites, Olive Scale Crawlers, San Jose Scale Crawlers	12 ³ / ₄ fl. oz. in 100 gals. of water	Apply as infestations occur. Repeat application after 14 days, if necessary.
	Olive Scale Crawlers	6 ¹ / ₂ fl. oz. + 1 ¹ / ₂ gals. of light medium horti- cultural oil per 100 gals. of water	Apply when scale crawlers are present. Do not apply more than 51 fl. oz. of product or 6 gals. of oil per acre per application.
	Apricot Mealybugs	12 ³ / ₄ fl. oz. per 100 gals. of water	Apply as a cover spray from petal fall to June. Allow 14 days between applications.
Notes: (1) Do not apply more than 51 fl. oz. of product per acre per application and no more than 153 fl. oz. of product per acre per season. (2) To avoid illegal residues, allow a minimum of 21 days between the last application and harvest.			
Blueberries	Cranberry fruitworms, Cherry fruitworms, Blueberry maggots, Aphids, Thrips, Two-spotted Spider Mites	25 ¹ / ₂ fl. oz./A	Apply as infestations occur. Allow 14 days between applications.
	Fire Ants	25 ¹ / ₂ fl. oz./A	To aid in the control of fire ants, slowly apply 1 gal. of dilute mixture over and 6 inches around each fire ant mound. Apply gently to avoid disturbing ants. Use equipment capable of delivering the diluted product as a gentle rain. High pressure sprays may disturb the ants and cause migration, reducing product effectiveness. Note: For best results, apply in cool weather, 65-80°F, or in early morning or late evening hours.

continued...

D-z-n® diazinon AG600 WBC

Notes: (1) Do not apply more than 25 1/2 fl. oz. of product per acre per application and no more than 127 1/2 fl. oz. of product per acre per season. (2) To avoid illegal residues, allow a minimum of 7 days between the last application and harvest.

Crop	Pest	Rate	Timing/Special Directions
Caneberries CA, OR, and WA only. (Blackberries, Bysenberries, Dewberries, Loganberries, Raspberries)	Leafhoppers, Thrips, Aphids, Two-spotted Spider Mites, Raspberry Fruitworms, Raspberry Sawflies	25 1/2 fl. oz./A in 100 gals. of water	Apply as insects occur. Repeat application after 14 days, if necessary. Apply in a minimum of 100 gals. of water per acre (200 gals./A maximum). For Raspberry Fruitworms, make one appli- cation when blossom buds separate. Make a second application immediately before blossoms open.
	Dryberry Mites	25 1/2-51 fl. oz./A in 100 gals. of water	Apply as a dormant spray in the early Spring when canes are still on the ground and buds are closed. Make a second application when buds are well developed, but still closed. Apply in a minimum of 100 gals. of water per acre (200 gals./A maximum).
	Raspberry Crown Borers (Raspberry Root Borers)	51 fl. oz./A	Apply in a single application in a minimum of 100 gals. of water per acre as a drench to the crown and lower canes in the Spring before buds break.

Notes: (1) Do not apply more than 51 fl. oz. of product per acre per application and no more than 127 1/2 fl. oz. of product per acre per season. (2) To avoid illegal residues, allow a minimum of 7 days between the last application and harvest.

Cherries	Eyespotted Bud Moths, Fruit Tree Leafrollers	12 3/4 fl. oz. in 100 gals. of water	Apply in cover sprays as infestations occur beginning at petal fall. Repeat application after 7 days, if necessary.
	Leafhoppers	12 3/4 fl. oz. in 100 gals. of water	Make 3 applications beginning at petal fall and continuing through the growing season as infestations occur. Allow 7 days between applications.
	Cherry Fruitflies	6 1/2-12 3/4 fl. oz. in 100 gals. of water	Make 3-4 applications beginning when adult flies begin to emerge and repeating at 10-day intervals.
	Black Cherry Aphids	12 3/4 fl. oz. in 100 gals. of water	Apply as a cover spray when aphids appear. Repeat application after 10 days, if necessary.
	San Jose Scale Crawlers	12 3/4 fl. oz. in 100 gals. of water	Apply during the pre-pink stage or when crawlers first appear.
	Cherry Rust Mites	6 1/2-12 3/4 fl. oz. in 100 gals. of water	Apply to trees as a single supplemental spray after harvest.

Notes: (1) Do not apply more than 51 fl. oz. of product per acre per application and no more than 153 fl. oz. of product per acre per season. (2) To avoid illegal residues, allow a minimum of 21 days between the last application and harvest.

Cranberries	Blackheaded Fireworms (<i>Rhopobota naevana</i>)	51 fl. oz./A	Apply to larval stage. Pheromone trap captures and sweep monitoring may be used to optimize treatment timing. Repeat application after 14 days, if necessary. A maximum of 6 applications per season is permitted.
	Cranberry Tipworms	51 fl. oz./A	Presence of damage is not an indicator of active infestation. For best results, target early-stage larvae. Repeat application after 14 days, if necessary. A maximum of 6 applications is permitted.
	Cranberry Fruitworms	51-76 1/2 fl. oz./A	Cranberry growth stage and/or berry inspection for eggs may be used to optimize treatment timing; consult your local extension agent or pest management advisor. Repeat application every 14 days, as needed. A maximum of 4 applications per season is permitted for the 76 1/2 fl. oz. rate. A maximum of 6 applications per season is permitted for the 51 fl. oz. rate.

Notes: (1) This product may be applied to cranberries via ground, aerial, or sprinkler irrigation. For ground application, apply the product in a minimum of 15 gals. of water per acre, for aerial application, a minimum of 5 gals. of water per acre, for chemigation, up to 400 gals. of water per acre. Refer to the Chemigation section of this label for specific chemigation directions. (2) Do not use water from irrigated or flooded cranberry beds for drinking purposes or to irrigate crops other than those appearing on EPA-approved diazinon labels. (3) Do not apply more than 306 fl. oz. of product per acre per season. (4) To avoid illegal residues, allow a minimum of 7 days between the last application and harvest.

continued...

D-z-n® diazinon AG600 WEC

Crop	Pest	Rate	Timing/Special Directions
Grapes	Pacific Spider Mites, Leafhoppers, Grape Berry Moths, Grape Leafrollers, Omnivorous Leafrollers, Aphids, Spider Mites	12 ³ / ₄ -25 ¹ / ₂ fl. oz./A in a minimum of 100 gals. of water	Apply as a thorough cover spray. Repeat application after 7 days, if necessary.
	<i>Drosophila</i> spp.	4 ³ / ₄ fl. oz./A in a minimum of 100 gals. of water (300 gals. of water maximum)	Apply as a thorough cover spray. Repeat application after 7 days, if necessary.
Notes: (1) Do not apply more than 25 ¹ / ₂ fl. oz. of product per acre per application and no more than 127 ¹ / ₂ fl. oz. per acre per season. (2) To avoid illegal residues, allow 28 days between the last application and harvest.			
Nectarines	Oriental Fruit Moths	12 ³ / ₄ fl. oz. in 100 gals. of water	Apply at 100% petal fall. Make 2 additional applications at 10 to 15-day intervals. Time the last application to peak adult flight.
	Aphids, Brown Mites (Clover Mites), Two-spotted Spider Mites, Olive Scale Crawlers, San Jose Scale Crawlers, Peach Twig Borers	12 ³ / ₄ fl. oz. in 100 gals. of water	Apply as infestations occur. Repeat application after 14 days, if necessary.
Notes: (1) Do not apply more than 51 fl. oz. of product per acre per application and no more than 153 fl. oz. per acre per season. (2) To avoid illegal residues, allow a minimum of 21 days between the last application and harvest.			
Peaches	Aphids, Brown Mites (Clover Mites), Two-spotted Spider Mites, Olive Scale Crawlers, San Jose Scale Crawlers	12 ³ / ₄ fl. oz. in 100 gals. of water	Apply as infestations occur. Repeat application after 14 days, if necessary.
	Oriental Fruit Moths	12 ³ / ₄ fl. oz. in 100 gals. of water	Apply at 100% petal fall. Make 2 additional applications at 10 to 15-day intervals. Time the last application to peak adult flight.
	Peach Twig Borers	12 ³ / ₄ fl. oz. in 100 gals. of water	Apply as insects occur in May and June. Allow 7 days between applications.
	Leafhoppers	12 ³ / ₄ fl. oz. in 100 gals. of water	Make 3 applications beginning at petal fall and continuing through the growing season. Allow 7 days between applications.
	White Peach Scale	19-25 ¹ / ₂ fl. oz. in 100 gals. of water	Apply post-harvest timed to coincide with peak crawler and immature scale activity. Under conditions of heavy infestation, 2 applications (7 days apart) may be needed. Do not apply before fruit is harvested.
Notes: (1) Do not apply more than 51 fl. oz. of product per acre per application and no more than 153 fl. oz. of product per acre per season. (2) To avoid illegal residues, allow a minimum of 21 days between the last application and harvest.			
Pears	San Jose Scale, Parlatoria Scale, Black Scale, Brown Scale, Apricot Scale, European Red Mite Eggs, Brown Mite Eggs, Pear Leaf Blister Mite Eggs, Twig Borers, Apple Aphid Eggs, Black Cherry Aphid Eggs, Mealy Plum Aphid Eggs, Mealybugs	12 ³ / ₄ fl. oz. + 2-3 gals. dormant oil or 1-1 ¹ / ₂ gals. superior type oil in 100 gals. of water	Apply as a dormant spray. Do not apply more than 4 lbs. of product or 6 gals. of oil per acre.
	Pear Psylla	6 ¹ / ₂ -12 ³ / ₄ fl. oz. in 100 gals. of water	Apply as a cover spray at pre-pink stage. Make 1-2 additional applications during the first and second cover sprays, if necessary. Allow at least 14 days between applications.
	Tentiform Leafminers, Mealybugs	12 ³ / ₄ fl. oz. in 100 gals. of water	Make 3 cover sprays, beginning in April. Allow at least 14 days between applications.
	Codling Moths, Rosy Apple Aphids, Green Apple Aphids, Woolly Apple Aphids, Spider Mites	12 ³ / ₄ fl. oz. in 100 gals. of water	Make 3 cover sprays, beginning as infestations occur. Allow at least 14 days between applications. Note: Mites will be suppressed if diazinon is used in this regular cover spray program.
	Apple Maggots	12 ³ / ₄ fl. oz. in 100 gals. of water	Make 3 cover sprays when flies are active and laying eggs. Allow at least 14 days between applications. Note: Diazinon will not control organophosphate-resistant apple maggots.

continued...

D-z-n® diazinon AG600 WBC

Crop	Pest	Rate	Timing/Special Directions
Pears (continued)	San Jose Scale Crawlers, Forbes Scale Crawlers	12 ³ / ₄ fl. oz. in 100 gals. of water	Apply early in the season when crawlers first appear. If infestation warrants, make a second application 14 days later.

Notes: (1) Do not apply more than 51 fl. oz. of product per acre per application and no more than 153 fl. oz. of product per acre per season. (2) To avoid illegal residues, allow a minimum of 21 days between the last application and harvest.

Plums	Brown Mites (Clover Mites), European Red Mites	12 ³ / ₄ fl. oz. in 100 gals. of water	Apply, as needed, every 7 days.
	Leafcurl Plum Aphids, Mealy Plum Aphids, Thistle Aphids	6 ¹ / ₂ -12 ³ / ₄ fl. oz. in 100 gals. of water	

Notes: (1) Do not apply more than 51 fl. oz. of product per acre per application and no more than 153 fl. oz. of product per acre per season. (2) To avoid illegal residues, allow a minimum of 21 days between the last application and harvest.

Prunes	Brown Mites (Clover Mites), European Red Mites	12 ³ / ₄ fl. oz. in 100 gals. of water	Apply, as needed, every 7 days.
	Leafcurl Plum Aphids, Mealy Plum Aphids, Thistle Aphids	6 ¹ / ₂ -12 ³ / ₄ fl. oz. in 100 gals. of water	

Notes: (1) Do not apply more than 51 fl. oz. of product per acre per application and no more than 153 fl. oz. of product per acre per season. (2) To avoid illegal residues, allow a minimum of 21 days between the last application and harvest.

Strawberries	Aphids, Two-spotted Spider Mites	12 ³ / ₄ fl. oz. in 100 gals. of water per acre	Apply as pests occur. Repeat application, if necessary, after 7 days.
	Cyclamen Mites	25 ¹ / ₂ fl. oz. in 100 gals. of water per acre	Direct spray to the plant crowns. Plants should be sufficiently agitated to assure thorough coverage of the foliage. Repeat application after 7 days, if necessary.
	Mole Crickets	25 ¹ / ₂ fl. oz./A	One to two days before planting, broadcast in sufficient water to obtain even coverage and immediately incorporate into the top 1-2 inches of soil.
	Strawberry Leafrollers	9 ¹ / ₂ -12 ³ / ₄ fl. oz. in 100 gals. of water	Apply 200 gals. of spray per acre when blossoms show color.

Notes: (1) Do not apply more than 25¹/₂ fl. oz. per acre per application and no more than 102 fl. oz. of product per acre per season. (2) To avoid illegal residues, allow a minimum of 5 days between the last application and harvest.

Walnuts (CA only)	Aphids, Spider Mites	25 ¹ / ₂ fl. oz./A	Apply as a foliar spray. Repeat application in 14 days, if necessary. Make ground applications in a minimum of 100 gals. of water per acre.
	Codling Moths, Scale Crawlers, Walnut Caterpillars	76 ¹ / ₂ fl. oz./A	

Notes: (1) Do not apply more than 76¹/₂ fl. oz. of product per acre per application and no more than 229¹/₂ fl. oz. of product per acre per season. (2) To avoid illegal residues, allow a minimum of 45 days between the last application and harvest and do not apply after husks open.

VEGETABLE CROPS**REI - 24 hours**

For foliar or soil applications, D-z-n diazinon AG600 WBC should always be applied as a spray in sufficient water to assure thorough coverage of the foliage or soil. D-z-n diazinon AG600 WBC may be applied using ground or aerial application equipment as specified in the following table. This table indicates the **minimum** amount of water that can be used for the various methods of application. The specific amount of product to be used appears under the separate directions for use for each crop.

D·z·n® diazinon AG600 WBC

Crop	Ground Application		Aerial Application Minimum Gals./Acre
	Minimum Gals./Acre	OR Minimum Gals./1,000 Sq. Ft.	
Beans (Lima, Pole, and Snap) (succulent only)	10	2	5
Beets, Red (Table)	10	2	5
Broccoli	10	2	5
Brussels Sprouts	10	2	5
Cabbage	10	2	5
Cantaloupes	5	1	5
Carrots	10	2	5
Casabas	5	1	5
Cauliflower	10	2	5
Chinese Broccoli	10	2	5
Chinese Cabbage	10	2	5
Chinese Mustard	10	2	5
Chinese Radish (CA, FL only)	10	2	5
Collards	10	2	5
Crenshaws	5	1	5
Cucumbers	5	1	5
Endive (Escarole)	10	2	5
Ginseng	10	2	-
Honeydew Melons	5	1	5
Kale	10	2	5
Lettuce, Head	10	2	5
Lettuce, Leaf	10	2	5
Muskmelons	5	1	5
Mustard	10	2	5
Onions (Bulb and Green)	10	2	5
Parsley	10	2	5
Parsnips	10	2	5
Peas (succulent only)	10	2	5
Peppers	10	2	5
Persian Melons	5	1	5
Potatoes (Irish)*	10	2	5
Radishes	10	2	5
Spinach	10	2	5
Squash, Summer	5	1	5
Squash, Winter	5	1	5
Sweet Corn	20	4	5
Sweet Potatoes	10	2	5
Swiss Chard	10	2	5
Tomatoes	10	2	5
Tumips	10	2	5
Watermelons	5	1	5

*Do not use on commercially grown potatoes which will be hand-harvested.

D-z-n® diazinon AG600 WBC

Observe stated time intervals between last application and harvest, as well as intervals between and maximum numbers of applications per season. Do not apply to food crops grown in greenhouses.

Pre-Harvest Intervals (PHI*) for Foliar Applications

Crop	PHI* (Days)
Beans (Lima, Pole, and Snap)	7
Beets, Red (Table)	14
Broccoli	7
Brussels Sprouts	7
Cabbage	21
Cantaloupes	3
Carrots	14
Casabas	3
Cauliflower	7
Chinese Broccoli	10
Chinese Cabbage	10
Chinese Mustard	10
Chinese Radish	10
Collards	10
Crenshaws	3
Cucumbers	7
Endive (Escarole)	14
Ginseng	30
Honeydew Melons	3
Kale	10
Lettuce	14
Muskmelons	3
Mustard	10
Onions (Bulb and Green)	14
Parsnips	14
Peas	7
Peppers	5
Persian Melons	3
Potatoes (Irish)	35
Radishes	14
Spinach	14
Squash, Summer	7
Squash, Winter	3
Sweet Corn	7
Swiss Chard	14
Tomatoes	1
Turnips, Roots and Tops	14
Watermelons	3

*PHI = Pre-Harvest Interval or the number of days to wait between the last application and harvest.

Notes: (1) **Soil Incorporation:** Following application of this product to control vegetable soil insects, immediately incorporate the product into the soil to the recommended depth (see **Timing/Special Directions**), using a rotary hoe, cultivator, disk, harrow, or other suitable means. For control of surface cutworms, incorporate 2-3 inches, for subterranean cutworms, incorporate 3-6 inches. (2) **To Protect Bees:** Foliar applications of this product should not be made to peas or beans if these crops or weeds in the treatment area are in bloom, or to corn during the pollen shed period.

D-z-n® diazinon AG600 WBC

Crop	Pest	Rate	Timing/Special Directions
Beans (Lima, Pole, and Snap) (succulent only)	Cutworms	51-102 fl. oz./A	Broadcast just before planting and immediately incorporate into the soil. (See Soil Incorporation Note.)
	Wireworms	75 ¹ / ₂ -102 fl. oz./A	Broadcast just before planting and immediately incorporate into the top 4-8 inches of soil.
	Black Bean Aphids, Mexican Bean Beetles, Dipterous Leafminers	12 ³ / ₄ -19 fl. oz./A	Apply as insects occur. Repeat application, as necessary, every 5 days. Do not make more than 3 applications per season.
	Cucumber Beetles	9 ¹ / ₂ fl. oz./A	Do not apply within 7 days of harvest, or illegal residues may occur. Bean forage or bean hay may be fed to dairy and beef cattle and sheep. Wait 4 days following treatment if forage is to be cut for hay. Make cucumber beetle application in 100 gals. of water per acre. Notes: (1) Diazinon will not control organo-phosphate-resistant leafminers. (2) To protect bees, do not apply foliarly if the crop or weeds in the treatment area are in bloom.
Beans, Lima (succulent only)	Leafhoppers, Spider Mites	12 ³ / ₄ fl. oz./A	Apply as pests occur. Repeat application, as necessary, every 5 days. Do not make more than 3 applications per season. Do not apply within 7 days of harvest, or illegal residues may occur. Bean forage or bean hay may be fed to dairy and beef cattle and sheep. Wait 4 days following treatment if forage is to be cut for hay. Note: To protect bees, do not apply foliarly if the crop or weeds in the treatment area are in bloom.
Beets, Red (Table)	Cutworms	51-102 fl. oz./A	Broadcast just before planting and immediately incorporate into the soil. (See Soil Incorporation Note.)
	Mole Crickets	25 ¹ / ₂ fl. oz./A	One to two days before planting, broadcast and immediately incorporate into the top 1-2 inches of soil.
	Wireworms	75 ¹ / ₂ -102 fl. oz./A	Broadcast just before planting and immediately incorporate into the top 4-8 inches of soil.
	Dipterous Leafminers	6 ¹ / ₂ -12 ³ / ₄ fl. oz./A	Apply as insects occur. Repeat application, as necessary, every 7 days. Do not make more than 5 applications per season. Do not apply within 14 days of harvest, or illegal residues may occur. Note: Diazinon will not control organophosphate-resistant leafminers.
Broccoli	Root Maggots	51-76 ¹ / ₂ fl. oz./A	Broadcast just before planting and immediately incorporate into the top 3-4 inches of soil.
		3 ¹ / ₄ -6 ¹ / ₂ fl. oz. per 50 gals. of water	In transplant water as a drench application when 200-300 gals. of water are used per acre. Apply 3 ¹ / ₄ -6 ¹ / ₂ fl. oz. per plant by hand or by tractor-mounted sprayer equipped with drop nozzles to direct spray to the base of the plant. Note: Transplant water treatments may result in stand reduction due to plant stress at time of transplanting.
	Cutworms	51-102 fl. oz./A	Broadcast just before planting and immediately incorporate into the soil. (See Soil Incorporation Note.)
	Mole Crickets	25 ¹ / ₂ fl. oz./A	One to two days before planting, broadcast and immediately incorporate into the top 1-2 inches of soil.
	Wireworms	75 ¹ / ₂ -102 fl. oz./A	Broadcast just before planting and immediately incorporate into the top 4-8 inches of soil.
	Aphids, Diamondback Moths, Imported Cabbageworms, Dipterous Leafminers	6 ¹ / ₂ -12 ³ / ₄ fl. oz./A	Apply as insects occur. Repeat application, as necessary, every 7 days. Do not make more than 5 applications per season. Do not apply within 7 days of harvest, or illegal residues may occur. Note: Diazinon will not control organophosphate-resistant leafminers.

continued...

D-z-n® diazinon AG600 WBC

Crop	Pest	Rate	Timing/Special Directions
Brussels Sprouts	Root Maggots	51-76 ¹ / ₂ fl. oz./A	Broadcast just before planting and immediately incorporate into the top 3-4 inches of soil.
		3 ¹ / ₄ -6 ¹ / ₂ fl. oz. in 50 gals. of water	In transplant water as a drench application when 200-300 gals. of water are used per acre. Apply 3 ¹ / ₄ -6 ¹ / ₂ fl. oz. per plant by hand or by tractor-mounted sprayer equipped with drop nozzles to direct spray to the base of the plant. Note: Transplant water treatments may result in stand reduction due to plant stress at time of transplanting.
	Cutworms	51-102 fl. oz./A	Broadcast just before planting and immediately incorporate into the soil. (See Soil Incorporation Note.)
	Mole Crickets	25 ¹ / ₂ fl. oz./A	One to two days before planting, broadcast and immediately incorporate into the top 1-2 inches of soil.
	Wireworms	76 ¹ / ₂ -102 fl. oz./A	Broadcast just before planting and immediately incorporate into the top 4-8 inches of soil.
	Aphids, Diamondback Moths, Imported Cabbageworms	6 ¹ / ₂ -12 ³ / ₄ fl. oz./A	Apply as insects occur. Repeat application, as necessary, every 7 days. Do not make more than 5 applications per season. Do not apply within 7 days of harvest, or illegal residues may occur.
Cabbage	Root Maggots	51-76 ¹ / ₂ fl. oz./A	Broadcast just before planting and immediately incorporate into the top 3-4 inches of soil.
		3 ¹ / ₄ -6 ¹ / ₂ fl. oz. in 50 gals. of water	In transplant water as a drench application when 200-300 gals. of water are used per acre. Apply 3 ¹ / ₄ -6 ¹ / ₂ fl. oz. per plant by hand or by tractor-mounted sprayer equipped with drop nozzles to direct spray to the base of the plant. Note: Transplant water treatments may result in stand reduction due to plant stress at time of transplanting.
	Cutworms	51-102 fl. oz./A	Broadcast just before planting and immediately incorporate into the soil. (See Soil Incorporation Note.)
	Mole Crickets	25 ¹ / ₂ fl. oz./A	One to two days before planting, broadcast and immediately incorporate into the top 1-2 inches of soil.
	Wireworms	76 ¹ / ₂ -102 fl. oz./A	Broadcast just before planting and immediately incorporate into the top 4-8 inches of soil.
	Aphids, Diamondback Moths, Imported Cabbageworms, Dipterous Leafminers	6 ¹ / ₂ -12 ³ / ₄ fl. oz./A	Apply as insects occur. Repeat application, as necessary, every 7 days. Do not make more than 5 applications per season. Do not apply within 21 days of harvest, or illegal residues may occur. Note: Diazinon will not control organophosphate-resistant leafminers.
Carrots	Cutworms	51-102 fl. oz./A	Broadcast just before planting and immediately incorporate into the soil. (See Soil Incorporation Note.)
	Mole Crickets	25 ¹ / ₂ fl. oz./A	One to two days before planting, broadcast and immediately incorporate into the top 1-2 inches of soil.
	Wireworms	76 ¹ / ₂ -102 fl. oz./A	Broadcast just before planting and immediately incorporate into the top 4-8 inches of soil.
	Aphids	12 ³ / ₄ fl. oz./A	Apply as insects occur. Repeat application, as necessary, every 7 days. Do not make more than 5 applications per season. Do not apply within 14 days of harvest, or illegal residues may occur.
Cauliflower	Root Maggots	51-76 ¹ / ₂ fl. oz./A	Broadcast just before planting and immediately incorporate into the top 3-4 inches of soil.
		3 ¹ / ₄ -6 ¹ / ₂ fl. oz. in 50 gals. of water	In transplant water as a drench application when 200-300 gals. of water are used per acre. Apply 3 ¹ / ₄ -6 ¹ / ₂ fl. oz. per plant by hand or by tractor-mounted sprayer equipped with drop nozzles to direct spray to the base of the plant. Note: Transplant water treatments may result in stand reduction due to plant stress at time of transplanting.

continued...

D-z-n® diazinon AG600 WBC

Crop	Pest	Rate	Timing/Special Directions
Cauliflower (continued)	Cutworms	51-102 fl. oz./A	Broadcast just before planting and immediately incorporate into the soil. (See Soil Incorporation Note.)
	Mole Crickets	25½ fl. oz./A	One to two days before planting, broadcast and immediately incorporate into the top 1-2 inches of soil.
	Wireworms	76½-102 fl. oz./A	Broadcast just before planting and immediately incorporate into the top 4-8 inches of soil.
	Aphids, Diamondback Moths, Imported Cabbageworms, Dipterous Leafminers	6½-12¾ fl. oz./A	Apply as insects occur. Repeat application, as necessary, up to 5 times, with a minimum of 7 days between applications. Do not apply within 7 days of harvest, or illegal residues may occur. Note: Diazinon will not control organophosphate-resistant leafminers.
Chinese Broccoli	Aphids, Diamondback Moths, Imported Cabbageworms, Dipterous Leafminers	6½-12¾ fl. oz./A	Apply as insects occur. Repeat application, as necessary, every 7 days. Do not make more than 5 applications per season. Do not apply within 10 days of harvest, or illegal residues may occur. Note: Diazinon will not control organophosphate-resistant leafminers.
Chinese Cabbage (Bok Choy and Napa)	Aphids, Diamondback Moths, Imported Cabbageworms, Dipterous Leafminers	6½-12¾ fl. oz./A	Apply as insects occur. Repeat application, as necessary, every 7 days. Do not make more than 5 applications per season. Do not apply within 10 days of harvest, or illegal residues may occur. Note: Diazinon will not control organophosphate-resistant leafminers.
Chinese Mustard (Gai Choy)	Aphids, Diamondback Moths, Imported Cabbageworms, Dipterous Leafminers	6½-12¾ fl. oz./A	Apply as insects occur. Repeat application, as necessary, every 7 days. Do not make more than 5 applications per season. Do not apply within 10 days of harvest, or illegal residues may occur. Note: Diazinon will not control organophosphate-resistant leafminers.
Chinese Radish (Japanese Radish or Daikon) (FL and CA only)	Aphids, Diamondback Moths, Imported Cabbageworms, Dipterous Leafminers	12¾ fl. oz./A	Mix in a minimum of 100 gals. of water per acre and apply as a foliar spray as pests occur. Repeat application, as necessary, every 14 days. Do not make more than 3 applications per season. Do not apply within 10 days of harvest, or illegal residues may occur. Note: Diazinon will not control organophosphate-resistant leafminers.
Collards	Cutworms	51-102 fl. oz./A	Broadcast just before planting and immediately incorporate into the soil. (See Soil Incorporation Note.)
	Mole Crickets	25½ fl. oz./A	One to two days before planting, broadcast and immediately incorporate into the top 1-2 inches of soil.
	Wireworms	76½-102 fl. oz./A	Broadcast just before planting and immediately incorporate into the top 4-8 inches of soil.
	Aphids, Diamondback Moths, Imported Cabbageworms, Harlequin Bugs, Corn Earworms	6½-12¾ fl. oz./A	Apply as insects occur. Repeat application, as necessary, every 7 days. Do not make more than 5 applications per season. Do not apply within 10 days of harvest, or illegal residues may occur.
Cucumbers	Cutworms	51-102 fl. oz./A	Broadcast just before planting and immediately incorporate into the soil. (See Soil Incorporation Note.)
	Wireworms	76½-102 fl. oz./A	Broadcast just before planting and immediately incorporate into the top 4-8 inches of soil.
	Aphids, Serpentine Leafminers, Thrips, Striped Cucumber Beetles, Melonworms	12¾ fl. oz./A	Apply as insects occur. Repeat application, as necessary, every 7 days. Do not make more than 5 applications per season. Do not apply within 10 days of harvest, or illegal residues may occur. Note: Diazinon will not control organophosphate-resistant leafminers.

continued...

D·z·n® diazinon AG600 WBC

Crop	Pest	Rate	Timing/Special Directions
Endive (Escarole)	Cutworms	51-102 fl. oz./A	Broadcast just before planting and immediately incorporate into the soil. (See Soil Incorporation Note.)
	Mole Crickets	25 ¹ / ₂ fl. oz./A	One to two days before planting, broadcast and immediately incorporate into the top 1-2 inches of soil.
	Wireworms	76 ¹ / ₂ -102 fl. oz./A	Broadcast just before planting and immediately incorporate into the top 4-8 inches of soil.
	Aphids, Dipterous Leafminers	6 ¹ / ₂ -12 ³ / ₄ fl. oz./A	Apply as insects occur. Repeat application, as necessary, every 7 days. Do not make more than 5 applications per season. Do not apply within 14 days of harvest. Note: Diazinon will not control organophosphate-resistant leafminers.
Ginseng	Leafhoppers, Aphids, Lygus Bugs, Flea Beetles, Jumping Plant Lice	9 ¹ / ₂ -12 ³ / ₄ fl. oz./A	Spray when insects first appear. For heavy insect infestations, use 12 ³ / ₄ fl. oz. Apply by ground equipment, using 10-100 gals. of water per acre. Do not apply more than one application per growing season. Do not apply during flowering of 3 or 4 year old crops. Do not apply within 30 days of harvest. Do not graze treated areas or feed treated forage to livestock.
Kale	Cutworms	51-102 fl. oz./A	Broadcast just before planting and immediately incorporate into the soil. (See Soil Incorporation Note.)
	Mole Crickets	25 ¹ / ₂ fl. oz./A	One to two days before planting, broadcast and immediately incorporate into the top 1-2 inches of soil.
	Wireworms	76 ¹ / ₂ -102 fl. oz./A	Broadcast just before planting and immediately incorporate into the top 4-8 inches of soil.
	Aphids, Diamondback Moths, Imported Cabbageworms, Harlequin Bugs, Corn Earworms	6 ¹ / ₂ -12 ³ / ₄ fl. oz./A	Apply as insects occur. Repeat application, as necessary, every 7 days. Do not make more than 5 applications per season. Do not apply within 10 days of harvest, or illegal residues may occur.
Lettuce	Cutworms	51-102 fl. oz./A	Broadcast just before planting and immediately incorporate into the soil. (See Soil Incorporation Note.)
	Mole Crickets	25 ¹ / ₂ fl. oz./A	One to two days before planting, broadcast and immediately incorporate into the top 1-2 inches of soil.
	Wireworms	76 ¹ / ₂ -102 fl. oz./A	Broadcast just before planting and immediately incorporate into the top 4-8 inches of soil.
	Aphids, Dipterous Leafminers	6 ¹ / ₂ -12 ³ / ₄ fl. oz./A	Apply as insects occur. Repeat application, as necessary, every 7 days. Do not make more than 5 applications per season. Do not apply within 14 days of harvest. Note: Diazinon will not control organophosphate-resistant leafminers.
Melons (Cantaloupes, Casabas, Crenshaws, Honeydews, Muskmelons, Persians, and Hybrids of these) and Watermelons	Cutworms	51-102 fl. oz./A	Broadcast just before planting and immediately incorporate into the soil. (See Soil Incorporation Note.)
	Wireworms	76 ¹ / ₂ -102 fl. oz./A	Broadcast just before planting and immediately incorporate into the top 4-8 inches of soil.
	Aphids, Dipterous Leafminers, Thrips, Striped Cucumber Beetles, Melonworms, Leafhoppers, Spider Mites	6 ¹ / ₂ -19 fl. oz./A	Apply as insects occur. Repeat application, as necessary, every 7 days. Do not make more than 5 applications per season. Do not apply within 3 days of harvest, or illegal residues may occur. Note: Diazinon will not control organophosphate-resistant leafminers.
Mustard	Cutworms	51-102 fl. oz./A	Broadcast just before planting and immediately incorporate into the soil. (See Soil Incorporation Note.)
	Mole Crickets	25 ¹ / ₂ fl. oz./A	One to two days before planting, broadcast and immediately incorporate into the top 1-2 inches of soil.
	Wireworms	76 ¹ / ₂ -102 fl. oz./A	Broadcast just before planting and immediately incorporate into the top 4-8 inches of soil.

continued...

D-z-n® diazinon AG600 WBC

Crop	Pest	Rate	Timing/Special Directions
Mustard (continued)	Aphids, Dipterous Leafminers, Diamondback Moths, Imported Cabbageworms	6 ¹ / ₂ -12 ³ / ₄ fl. oz./A	Apply as insects occur. Repeat application, as necessary, every 7 days. Do not make more than 5 applications per season. Do not apply within 10 days of harvest, or illegal residues may occur. Note: Diazinon will not control organophosphate-resistant leafminers.
Onions (Bulb and Green)	Onion Maggots	51-102 fl. oz./A	Broadcast just before planting and immediately incorporate into the top 3-4 inches of soil. Note: Diazinon will not control organophosphate-resistant onion maggots.
	Onion Thrips	12 ³ / ₄ fl. oz./A	Apply as thrips appear. Repeat application, as necessary, every 7 days. Do not make more than 3 applications per season. Do not apply within 14 days of harvest, or illegal residues may occur.
	Wireworms	76 ¹ / ₂ -102 fl. oz./A	Broadcast just before planting and immediately incorporate into the top 4-8 inches of soil.
Parsley	Cutworms	51-102 fl. oz./A	Broadcast just before planting and immediately incorporate into the soil. (See Soil Incorporation Note.)
	Wireworms	76 ¹ / ₂ -102 fl. oz./A	Broadcast just before planting and immediately incorporate into the top 4-8 inches of soil.
Parsnips	Aphids, Flea Beetles, Dipterous Leafminers	6 ¹ / ₂ -12 ³ / ₄ fl. oz./A	Apply as insects occur. Repeat application, as necessary, every 7 days. Do not make more than 5 applications per season. Do not apply within 14 days of harvest, or illegal residues may occur. Note: Diazinon will not control organophosphate-resistant leafminers.
Peas (succulent only)	Cutworms	51-102 fl. oz./A	Broadcast just before planting and immediately incorporate into the soil. (See Soil Incorporation Note.)
	Wireworms	76 ¹ / ₂ -102 fl. oz./A	Broadcast just before planting and immediately incorporate into the top 4-8 inches of soil.
	Aphids, Dipterous Leafminers	9 ¹ / ₂ -12 ³ / ₄ fl. oz./A	Apply as insects occur. Repeat application, as necessary, every 5 days. Do not make more than 3 applications per season. To avoid illegal residues, allow a minimum of 7 days between the last application and harvest. Vines and hay may be fed to dairy and beef cattle and sheep. To avoid illegal residues, wait 7 days following treatment if forage is to be cut for hay. Notes: (1) Diazinon will not control organophosphate-resistant leafminers. (2) To protect bees, do not apply foliarly if the crop or weeds in the treatment area are in bloom.
Peppers	Cutworms	51-102 fl. oz./A	Broadcast just before planting and immediately incorporate into the soil. (See Soil Incorporation Note.)
	Mole Crickets	25 ¹ / ₂ fl. oz./A	One to two days before planting, broadcast and immediately incorporate into the top 1-2 inches of soil.
	Wireworms	76 ¹ / ₂ -102 fl. oz./A	Broadcast just before planting and immediately incorporate into the top 4-8 inches of soil.
	Aphids, Serpentine Leafminers	6 ¹ / ₂ -12 ³ / ₄ fl. oz./A	Apply as insects occur. Repeat application, as necessary, every 7 days. Do not make more than 5 applications per season. Do not apply within 5 days of harvest, or illegal residues may occur. Note: Diazinon will not control organophosphate-resistant leafminers.
Potatoes	Cutworms (Surface and Subterranean)	51-102 fl. oz./A	Broadcast just before planting and immediately incorporate into the soil. (See Soil Incorporation Note.)
	Wireworms	76 ¹ / ₂ -102 fl. oz./A	Broadcast just before planting and immediately incorporate into the top 4-8 inches of soil.
	Southern Potato Wireworms (Southeastern U.S.)	51-102 fl. oz./A	For potatoes grown on mineral soils in the Southeast, apply before planting and immediately incorporate into the top 3-6 inches of soil, depending on location of wireworms.

continued...

D-z-n® diazinon AG600 WBC

Crop	Pest	Rate	Timing/Special Directions
Potatoes (continued)	Aphids, Flea Beetles, Colorado Potato Beetles, Dipterous Leafminers	6 ¹ / ₂ -9 ¹ / ₂ fl. oz./A	Apply as insects occur. Repeat application, as necessary, every 7 days. Do not make more than 5 applications per season. Do not apply within 35 days of harvest, or illegal residues may occur. Note: Diazinon will not control organophosphate- resistant leafminers.
	Banded Cucumber Beetles, Leafhoppers, Southern Armyworms	9 ¹ / ₂ -12 ³ / ₄ fl. oz./A	Apply as insects occur. Repeat application, as necessary, every 7 days. Do not make more than 5 applications per season. Do not apply within 35 days of harvest, or illegal residues may occur.
Note: Do not use on commercially grown potatoes which will be hand-harvested.			
Radishes	Cutworms	51-102 fl. oz./A	Broadcast just before planting and immediately incorporate into the soil. (See Soil Incorporation Note.)
	Mole Crickets	25 ¹ / ₂ fl. oz./A	One to two days before planting, broadcast and immediately incorporate into the top 1-2 inches of soil.
	Wireworms	76 ¹ / ₂ -102 fl. oz./A	Broadcast just before planting and immediately incorporate into the top 4-8 inches of soil.
	Aphids, Flea Beetles, Dipterous Leafminers	6 ¹ / ₂ -12 ³ / ₄ fl. oz./A	Apply as insects occur. Repeat application, as necessary, every 7 days. Do not make more than 3 applications per season. Do not apply within 14 days of harvest, or illegal residues may occur. Note: Diazinon will not control organophosphate- resistant leafminers.
Rutabagas	Cutworms	51-102 fl. oz./A	Broadcast just before planting and immediately incorporate into the soil. (See Soil Incorporation Note.)
	Mole Crickets	25 ¹ / ₂ fl. oz./A	One to two days before planting, broadcast and immediately incorporate into the top 1-2 inches of soil.
	Wireworms	76 ¹ / ₂ -102 fl. oz./A	Broadcast just before planting and immediately incorporate into the top 4-8 inches of soil.
	Aphids, Flea Beetles, Dipterous Leafminers	6 ¹ / ₂ -12 ³ / ₄ fl. oz./A	Apply as insects occur. Repeat application, as necessary, every 7 days. Do not make more than 5 applications per season. Do not apply within 14 days of harvest, or illegal residues may occur. Note: Diazinon will not control organophosphate- resistant leafminers.
Spinach	Cutworms	51-102 fl. oz./A	Broadcast just before planting and immediately incorporate into the soil. (See Soil Incorporation Note.)
	Wireworms	76 ¹ / ₂ -102 fl. oz./A	Broadcast just before planting and immediately incorporate into the top 4-8 inches of soil.
	Aphids, Dipterous Leafminers	6 ¹ / ₂ -12 ³ / ₄ fl. oz./A	Apply as insects occur. Repeat application, as necessary, every 7 days. Do not make more than 5 applications per season. Do not apply within 14 days of harvest. Note: Diazinon will not control organophosphate- resistant leafminers.
Squash, Summer	Cutworms	51-102 fl. oz./A	Broadcast just before planting and immediately incorporate into the soil. (See Soil Incorporation Note.)
	Wireworms	76 ¹ / ₂ -102 fl. oz./A	Broadcast just before planting and immediately incorporate into the top 4-8 inches of soil.
	Aphids, Serpentine Leafminers, Thrips, Striped Cucumber Beetles, Melonworms, Leafhoppers, Spider Mites	6 ¹ / ₂ -19 fl. oz./A	Apply as insects occur. Repeat application, as necessary, every 7 days. Do not make more than 5 applications per season. Do not apply within 7 days of harvest, or illegal residues may occur. Note: Diazinon will not control organophosphate- resistant leafminers.

continued...

D-z-n® diazinon AG600 WBC

Crop	Pest	Rate	Timing/Special Directions
Squash, Winter	Cutworms	51-102 fl. oz./A	Broadcast just before planting and immediately incorporate into the soil. (See Soil Incorporation Note.)
	Wireworms	76 ¹ / ₂ -102 fl. oz./A	Broadcast just before planting and immediately incorporate into the top 4-8 inches of soil.
	Aphids, Serpentine Leafminers, Thrips, Striped Cucumber Beetles, Melonworms, Leafhoppers, Spider Mites	6 ¹ / ₂ -19 fl. oz./A	Apply as insects occur. Repeat application, as necessary, every 7 days. Do not make more than 5 applications per season. Do not apply within 3 days of harvest, or illegal residues may occur. Note: Diazinon will not control organophosphate-resistant leafminers.
Sweet Corn	Cutworms	51-102 fl. oz./A	Broadcast just before planting and immediately incorporate into the soil. (See Soil Incorporation Note.)
	Seed Corn Maggots	51-102 fl. oz./A	Broadcast just before planting and immediately incorporate into the top 2 inches of soil.
	Wireworms	76 ¹ / ₂ -102 fl. oz./A	Broadcast before planting and immediately incorporate into the top 4-8 inches of soil.
	Corn Earworms	25 ¹ / ₂ -32 fl. oz./A	Apply when silks first appear. Repeat application every 7 days, if necessary. Do not make more than 5 applications per season.
	Corn Rootworm (Adults)	6 ¹ / ₂ -12 ³ / ₄ fl. oz./A	Apply as insects occur. Repeat application, as necessary, every 7 days. Do not make more than 5 applications per season.
	Corn Leaf Aphids	12 ³ / ₄ -25 ¹ / ₂ fl. oz./A	Apply in sufficient water to provide complete coverage to the upper portions of the plants. Repeat application, as necessary, every 7 days. Do not make more than 5 applications per season.
	Grasshoppers, Spider Mites, Flea Beetles	12 ³ / ₄ fl. oz./A	Apply as insects occur. Repeat application, as necessary, every 7 days. Do not make more than 5 applications per season.
	Sap Beetles	25 ¹ / ₂ -32 fl. oz./A	Consult local agricultural authorities for proper timing of sprays. Repeat application, as necessary, every 7 days. Do not make more than 5 applications per season.
Notes: (1) To protect bees, do not apply foliarly to corn during the pollen shed period. (2) Allow 7 days after the last application before grazing or curing for forage. Forage may be fed to beef and dairy cattle and sheep. (3) Corn may be picked 7 days after the last application.			
Sweet Potatoes	Wireworms	76 ¹ / ₂ -102 fl. oz./A	Broadcast just before planting and immediately incorporate into the top 4-8 inches of soil.
Swiss Chard	Cutworms	51-102 fl. oz./A	Broadcast just before planting and immediately incorporate into the soil. (See Soil Incorporation Note.)
	Wireworms	76 ¹ / ₂ -102 fl. oz./A	Broadcast just before planting and immediately incorporate into the top 4-8 inches of soil.
	Aphids, Imported Cabbageworms, Diamondback Moths, Harlequin Bugs	6 ¹ / ₂ -12 ³ / ₄ fl. oz./A	Apply as insects occur. Repeat application, as necessary, every 7 days. Do not make more than 5 applications per season. Do not apply within 14 days of harvest, or illegal residues may occur.
Tomatoes	Cutworms	51-102 fl. oz./A	Broadcast just before planting and immediately incorporate into the soil. (See Soil Incorporation Note.)
	Mole Crickets	25 ¹ / ₂ fl. oz./A	One to two days before planting, broadcast and immediately incorporate into the top 1-2 inches of soil.
	Wireworms	76 ¹ / ₂ -102 fl. oz./A	Broadcast just before planting and immediately incorporate into the top 4-8 inches of soil.
	Aphids, Dipterous Leafminers	6 ¹ / ₂ fl. oz./A	Apply as insects appear. Repeat application, as necessary, every 7 days. Do not make more than 5 applications per season.
	Banded Cucumber Beetles, Fall Armyworms, Southern Armyworms, Beet Armyworms	9 ¹ / ₂ -12 ³ / ₄ fl. oz./A	Do not apply within one day of harvest, or illegal residues may occur. Note: Diazinon will not control organophosphate-resistant leafminers.
	Vinegar Flies (<i>Drosophila</i> spp.)	6 ¹ / ₂ -19 fl. oz./A	

continued...

D-z-n® diazinon AG600 WBC

Crop	Pest	Rate	Timing/Special Directions
Turnips, Roots and Tops	Cutworms	51-102 fl. oz./A	Broadcast just before planting and immediately incorporate into the soil. (See Soil Incorporation Note.)
	Mole Crickets	25 1/2 fl. oz./A	One to two days before planting, broadcast and immediately incorporate into the top 1-2 inches of soil.
	Wireworms	76 1/2-102 fl. oz./A	Broadcast just before planting and immediately incorporate into the top 4-8 inches of soil.
	Aphids, Flea Beetles, Dipterous Leafminers	6 1/2-12 3/4 fl. oz./A	Apply as insects occur. Repeat application, as necessary, every 7 days. Do not make more than 5 applications per season. Do not apply within 14 days of harvest, or illegal residues may occur. Note: Diazinon will not control organophosphate-resistant leafminers.

FIELD CROPS

REI - 24 hours

Soil and foliar applications of D-z-n diazinon AG600 WBC should always be applied as a spray in sufficient water to ensure thorough coverage. For foliar applications, observe stated time intervals between last application and harvest, as well as intervals between applications and total number of applications that can be made per season.

Pre-Harvest Interval (PHI*) for Foliar Applications

Crop	PHI* (Days)
Hops	14
Sugar Beets	14

*PHI = Pre-Harvest Interval or the number of days to wait between the last application and harvest.

Crop	Pest	Rate	Timing/Special Directions
Hops	Aphids, Spider Mites	25 1/2 fl. oz./A	Apply as pests occur. Repeat application, as necessary, every 14 days. Do not make more than 4 applications per season. Do not apply within 14 days of harvest.
	Wireworms	76 1/2-102 fl. oz./A	Broadcast just before planting. Incorporate into soil 4-6 inches. Do not apply more than 102 fl. oz. of this product to the soil per season.
Sugar Beets	Aphids, Beet Leafhoppers, Dipterous Leafminers	9 1/2-12 3/4 fl. oz./A	Apply as insects occur. Repeat application, as necessary, every 7 days. Do not make more than 5 applications per season. Do not apply within 14 days of harvest. Note: Diazinon will not control organophosphate-resistant leafminers.
	Grasshoppers	12 3/4 fl. oz./A	Apply as insects occur. Repeat application, as necessary, every 7 days. Do not make more than 5 applications per season. Do not apply within 14 days of harvest.

Note: Sugar beet tops may be fed to beef and dairy animals.

GRASSLAND INSECTS

Ditch Banks, Roadsides, Wasteland, Noncrop Areas, Barrier Strip(s)

Grasshoppers: Spray 9 1/2-12 3/4 fl. oz./A in water (minimum of 1 gal. of water per acre for aerial applications or a minimum of 5 gals. of water per acre for ground applications) or in oil (a minimum of 1 gal. of oil per acre) when insects first appear, preferably in the nymphal stage. Thorough coverage of the foliage is essential.

Do not graze or use treated grass for forage or feed.

INSECT CONTROL ON ORNAMENTALS

REI - 12 hours

To control certain insects on:

Arborvitae	Carnation	Elm	Honey Locust	Locust	Petunia	Rose	Wax Plant
Azalea	Chrysanthemum	Euonymus	Honeysuckle	Maple	Pine	Scotch Pine	(Hoya)
Birch	Crab Apple	Gladioli	Juniper	Marigold	Ornamental Plum	Spirea	Willow
Boxwood	Dogwood	Hawthorn	Lilac	Oak	Poplar	Spruce	Yellowwood
Camellia	Douglas Fir	Holly	Lily	Pansy	Rhododendron	Sycamore	Yew

D-z-n® diazinon AG600 WBC

Apply the recommended rates indicated below. Spray when listed pests first appear. Try to spray underside of leaves and penetrate dense foliage. Repeat as necessary.

Precaution: Do not use on Ferns, Poinsettia, Hibiscus, Papaya, Pilea, and Gardenia, since injury to the plants may occur.

Insects	Amount of D-z-n diazinon AG600 WBC to Use	
	Rate per 3 Gals. Water	Rate per 100 Gals. Water
Aphids, Bagworms, Carnation Bud Mites, Carnation Shoot Mites, Clover Mites, Cyclamen Mites, Dipterous Leafminers, European Pine Shoot Moths, European Red Mites, Flea Beetles, Holly Bud Moths, Leafhoppers, Obscure Root Weevils, Omnivorous Leaf-tiers, Privet Mites, Scale Crawlers (Cottonycushion, Lecanium, Pine Needle, San Jose, Soft), Thrips, Two-spotted Spider Mites, Juniper Webworms, Whiteflies	1/2 fl. oz. (3 teaspoons)	12 3/4 fl. oz.
Apple-and-Thorn Skeletonizers, Cotoneaster Webworms, European Pine Sawfly, Fall Webworms, Hemlock Chermes, Oak Loopers, Obliquebanded Leafrollers, Pear Slugs, Tent Caterpillars	1 1/4 fl. oz. (2 1/2 tablespoons)	38 1/4 fl. oz.

Mimosa Webworms: Mix 2 1/2 teaspoons in 3 gals. of water (or 12 3/4 fl. oz. in 100 gals. of water) and apply as a thorough foliar spray when adults first appear. Make a second and third application at 4 to 5-week intervals.

LAWN PEST CONTROL (EXCLUDING GOLF COURSES AND SOD FARMS)

Precautions: Birds, especially waterfowl, feeding or drinking on treated areas may be killed. Apply this product only as specified on this label. Because of the migratory habits of certain waterfowl, do not apply in Nassau County, New York between November 1 and May 20. Do not exceed maximum permitted label rates, since rates above those recommended significantly increase potential hazards to birds, especially waterfowl. Avoid overlapping of sprays. If waterfowl (ducks or geese) can be expected to enter the treated area after treatment (except spot treatments), water lawn with at least 1/4 inch of water immediately after application; however, stop watering before puddling occurs.

To control pests listed below, apply recommended rates. Repeat as necessary.

Pest	Rate/1,000 sq. ft.		Remarks
	D-z-n diazinon AG600 WBC	Water	
Lawn Chinch Bugs	1 1/2-2 1/2 fl. oz.	3 gals.	Use higher rate for longer residual control and in lawns of dense growth, such as St. Augustine lawns.
Ants, Armyworms, Bermudagrass Mites, Clover Mites, Crickets, Cutworms, Digger Wasps, Earwigs, Frit Flies, Lawn Billbugs, Leafhoppers, Sod Webworms (Lawn Moths), Sowbugs (Pillbugs), Springtails (<i>Collembola</i>)	1 1/2-2 1/2 fl. oz.	3 gals.	Spot spray ant hills and wasp ground nest openings. For digger wasps, apply at dusk when wasps are not active. For frit flies, before treatment mow grass and water well, but delay application until grass is dry. For billbug control, apply when activity is first observed or when chewed or brown grass is present, indicating damage from this insect.
Brown Dog Ticks, Chiggers, Fleas	2 1/2 fl. oz.	3 gals.	Note: Do not apply to animals. For brown dog ticks, spray grass and under shrubbery, particularly near house.
Hyperodes Weevils	2 1/2 fl. oz.	3 gals.	Treat problem areas in mid-April and again in mid-May.
Millipedes	2 1/2 fl. oz.	3 gals.	
Rhodesgrass Scales	2 1/2 fl. oz.	3 gals.	Apply when crawlers first emerge.
White Grubs (such as Japanese Beetle Larvae, European Chafer, Southern Chafer)	2 1/2 fl. oz.	3 gals.	Apply any time between late July and early October.

Nuisance Pests in Outside Areas

- | | | |
|-----------------|-------------|-----------------------------------|
| Ants | Cockroaches | Millipedes |
| Boxelder Bugs | Crickets | Sowbugs (Pillbugs) |
| Brown Dog Ticks | Earwigs | Spiders |
| Chiggers | Fleas | Springtails (<i>Collembola</i>) |
| Clover Mites | Flies | |

Mix 2 1/2 fl. oz. in 3 gals. of water and thoroughly spray window and door screens, sills, foundations, porch and patio walls, entranceways, walks, garbage cans, tree trunks, and into cracks and other places where insects can hide.

To prevent entry of insects into houses, spray a 5-ft. band of soil around the house next to the foundation and spray the foundation of the house to a height of 2-3 ft.

Repeat application as necessary. Do not apply to animals. Do not treat plants (other than tree trunks) at this nuisance pest rate.

D-z-n® diazinon AG600 WBC

STORAGE AND DISPOSAL

Do not contaminate water, food, or feed by storage or disposal. Open dumping is prohibited. If freezing occurs, place the product in a warm room (68°F or above) and allow to thaw. Roll or shake container frequently until thawing is complete.

Pesticide Disposal

Pesticide wastes are toxic. Improper disposal of excess pesticide, spray mixture, or rinsate is a violation of Federal law. To avoid harming aquatic organisms in rivers and other surface waters, do not pour the concentrate, spray mixture, or rinse water into sanitary drains (for example, toilets, floor drains, and sinks) or into storm water sewers (for example, street drains). If pesticide, spray mixture, or rinsate cannot be disposed of by use according to label instructions, contact your State Pesticide or Environmental Control Agency, or the Hazardous Waste representative at the nearest EPA Regional Office for guidance.

Container Disposal

Triple rinse (or equivalent). Then puncture and dispose of in a sanitary landfill, or incinerate, or burn, if allowed by state and local authorities. Stay out of smoke from burning container.

For minor spills, leaks, etc., follow all precautions indicated on this label and clean up immediately. Take special care to avoid contamination of equipment and facilities during cleanup and disposal of wastes. In the event of a major spill, fire, or other emergency, call 1-800-888-8372, day or night.

PRECAUTIONARY STATEMENTS

Hazards to Humans and Domestic Animals

CAUTION

Harmful if swallowed, inhaled, or absorbed through skin. Causes moderate eye irritation. Avoid contact with skin, eyes, or clothing. Avoid breathing vapor or spray mist. Avoid contamination of food and feed. Food utensils, such as spoons and measuring cups, should not be used for food purposes after use in measuring pesticides. Keep out of reach of domestic animals. Do not use on humans, household pets, or livestock. Do not contaminate ornamental fish ponds.

Statement of Practical Treatment

This product is an organophosphate.

If swallowed: Call a physician or Poison Control Center immediately. Drink 1 or 2 glasses of water and induce vomiting by touching back of throat with finger. Repeat until vomit fluid is clear. Do not induce vomiting or give anything by mouth if person is unconscious or convulsing.

If on skin: Wash promptly with soap and water. Rinse thoroughly. Get medical attention.

If inhaled: Remove victim to fresh air. If not breathing, apply artificial respiration, preferably mouth-to-mouth. Get medical attention.

If in eyes: Flush eyes with plenty of water. Call a physician if irritation persists.

Note to Physician: If ingested, induce emesis or lavage stomach. If symptoms of cholinesterase inhibition are present, atropine sulfate by injection is antidotal. 2-PAM is also antidotal and may be administered, but only in conjunction with atropine.

Personal Protective Equipment

Follow manufacturer's instructions for cleaning/maintaining PPE. If no such instructions for washables, use detergent and hot water. Keep and wash PPE separately from other laundry.

Applicators and other handlers must wear:

- Long-sleeved shirt and long pants
- Waterproof gloves
- Shoes plus socks

User Safety Recommendations

Users should:

- Wash hands before eating, drinking, chewing gum, using tobacco, or using the toilet.
- Remove clothing immediately if pesticide gets inside. Then wash thoroughly and put on clean clothing.

Engineering Control Statements

When handlers use closed systems, enclosed cabs, or aircraft in a manner that meets the requirements listed in the Worker Protection Standard (WPS) for agricultural pesticides [40 CFR 170.240 (d) (4-6)], the handler PPE requirements may be reduced or modified as specified in the WPS.

Environmental Hazards

This product is highly toxic to birds, fish, and other wildlife. Birds, especially waterfowl, feeding or drinking on treated areas may be killed. Because of the migratory habits of Atlantic Coast waterfowl, do not apply this product to lawns in Nassau County, New York between November 1 and May 20. Do not exceed maximum permitted label rates. Rates above those recommended significantly increase potential hazards to birds, especially waterfowl. Avoid overlapping of sprays. On lawns, if waterfowl (ducks or geese) can be expected in the treated area after treatment (except spot treatment), apply at least 1/4 inch of water immediately after spraying this product; however, stop watering before puddling occurs. Keep out of lakes, streams, ponds, tidal marshes, and estuaries. Do not apply directly to water, to areas where surface water is present, or to intertidal areas below the mean high water mark. Drift and runoff may be hazardous to aquatic organisms in neighboring areas. Shrimp and crab may be killed at application rates recommended on this label. Do not apply where fish, shrimp, crab, and other aquatic life are important resources. Do not contaminate water by cleaning of equipment or disposal of equipment wash waters.

This pesticide is highly toxic to bees exposed to direct treatment or to residues on blooming crops or weeds. Do not apply this pesticide or allow it to drift to blooming crops or weeds if bees are visiting the treatment area.

D-z-n® trademark of Novartis

©1998 Novartis

Novartis Crop Protection, Inc.
Greensboro, North Carolina 27419
NCP 784A-L1E 0198

D-z-n® diazinon AG600 WBC

RESTRICTED USE PESTICIDE
DUE TO AVIAN AND AQUATIC TOXICITY
 FOR RETAIL SALE TO AND USE BY CERTIFIED APPLICATORS OR PERSONS UNDER THEIR DIRECT SUPERVISION,
 AND ONLY FOR THOSE USES COVERED BY THE CERTIFIED APPLICATOR'S CERTIFICATION.

D-z-n diazinon
 AG600 WBC

INSECTICIDE
Water-Based Concentrate
 This product must not be used on golf courses and sod farms. For control of certain insects on fruits, nuts, vegetables, field crops, lawns, and ornamentals

Active Ingredient:
 Diazinon: 0,0-Diethyl 0-(2-isopropyl-6-methyl-4-pyrimidinyl) phosphorothioate 56.0%
 Inert Ingredients: 44.0%
 Total: 100.0%

SHAKE CONTENTS WELL BEFORE USING.
 EPA Reg. No. 100-784
 EPA Est. 70404-AL-001
 See directions for use in attached booklet.

AGRICULTURAL USE REQUIREMENTS
 Use this product only in accordance with its labeling and with the Worker Protection Standard, 40 CFR part 170. Refer to supplemental labeling under "Agricultural Use Requirements" in the Directions for Use section for information about this standard.

D-z-n® trademark of Novartis
 ©1998 Novartis
 Novartis Crop Protection, Inc.
 Greensboro, North Carolina 27419
 NCP 784A-L1E 0198

2.5 GALLONS
 U. S. Standard Measure

KEEP OUT OF REACH OF CHILDREN.
CAUTION

Precautionary Statements
Hazards to Humans and Domestic Animals
 Harmful if swallowed, inhaled, or absorbed through skin. Causes moderate eye irritation. Avoid contact with skin, eyes, or clothing. Avoid breathing vapor or spray mist. Avoid contamination of food and feed. Food utensils, such as spoons and measuring cups, should not be used for food purposes after use in measuring pesticides. Keep out of reach of domestic animals. Do not use on humans, household pets, or livestock. Do not contaminate ornamental fish ponds.

Statement of Practical Treatment
 This product is an organophosphate.

If swallowed: Call a physician or Poison Control Center immediately. Drink 1 or 2 glasses of water and induce vomiting by touching back of throat with finger. Repeat until vomit fluid is clear. Do not induce vomiting or give anything by mouth if person is unconscious or comatose.

If on skin: Wash promptly with soap and water. Rinse thoroughly. Get medical attention.

If inhaled: Remove victim to fresh air. If not breathing, apply artificial respiration, preferably mouth-to-mouth. Get medical attention.

If in eyes: Flush eyes with plenty of water. Call a physician if irritation persists.

Note to Physician: If ingested, induce emesis or lavage stomach. If symptoms of cholinesterase inhibition are present, atropine sulfate by injection is antidotal. 2-PAM is also antidotal and may be administered, but only in conjunction with atropine.

Environmental Hazards
 This product is highly toxic to birds, fish, and other wildlife. Birds, especially waterfowl, feeding or drinking on treated areas may be killed. Because of the migratory habits of Atlantic Coast waterfowl, do not apply this product to lawns in Nassau County, New York between November 1 and May 20. Do not exceed maximum permitted label rates. Rates above those recommended significantly increase potential hazards to birds, especially waterfowl. Avoid overlapping of sprays. On lawns, if waterfowl (ducks or geese) can be expected in the treated area after treatment (except spot treat-

ment), apply at least 1/4 inch of water immediately after spraying this product; however, stop watering before puddling occurs. Keep out of lakes, streams, ponds, tidal marshes, and estuaries. Do not apply directly to water, to areas where surface water is present, or to intertidal areas below the mean high water mark. Drift and runoff may be hazardous to aquatic organisms in neighboring areas. Shrimp and crab may be killed at application rates recommended on this label. Do not apply where fish, shrimp, crab, and other aquatic life are important resources. Do not contaminate water by cleaning of equipment or disposal of equipment wash waters. This pesticide is highly toxic to bees exposed to direct treatment or to residues on blooming crops or weeds. Do not apply this pesticide or allow it to drift to blooming crops or weeds if bees are visiting the treatment area.

Storage and Disposal
 Do not contaminate water, food, or feed by storage or disposal. Open dumping is prohibited. If freezing occurs, place the product in a warm room (60°F or above) and allow to thaw. Roll or shake container frequently until thawing is complete.

Pesticide Disposal
 Pesticide wastes are toxic. Improper disposal of excess pesticide, spray mixture, or rinsate is a violation of Federal law. To avoid harming aquatic organisms in rivers and other surface waters, do not pour the concentrate, spray mixture, or rinse water into sanitary drains (for example, toilets, floor drains, and sinks) or into storm water sewers (for example, street drains). If pesticide, spray mixture, or rinsate cannot be disposed of by use according to label instructions, contact your State Pesticide or Environmental Control Agency, or the Hazardous Waste representative at the nearest EPA Regional Office for guidance.

Container Disposal
 Triple rinse (or equivalent). Then puncture and dispose of in a sanitary landfill, or incinerate, or burn, if allowed by state and local authorities. Stay out of smoke from burning container. For minor spills, leaks, etc., follow all precautions indicated on this label and clean up immediately. Take special care to avoid contamination of equipment and facilities during cleanup and disposal of wastes. In the event of a major spill, fire, or other emergency, call 1-800-888-8372, day or night.

