

RIGO

**DURSBAN[™]
LAWN & ORNAMENTAL
INSECT SPRAY**

Controls Numerous Pests of
Turf and Ornamental Plants
DIRECTIONS FOR USE

SPRINKLE ON TO BE
EFFECTIVE IN 20 MIN.

WARNING
KEEP OUT OF REACH OF CHILDREN

PRECAUTIONARY STATEMENTS

Hazards to Humans
MAY BE FATAL IF SWALLOWED
MAY BE ABSORBED THROUGH SKIN
MAY BE IRRITANT TO EYES AND SKIN
Do Not Take Internally. Do Not Get in
Eyes or on Skin. Wash Thoroughly After
Handling. Wash Contaminated Clothing
Before Reuse. Flush Contaminated Eyes
with Plenty of Water and Get Prompt Med-
ical Attention. Avoid Breathing vapors of
Spray. Must Avoid Spraying Food Crops.
Keep Away from Food, Feedstuffs and
Domestic Water Supplies. Keep Con-
tainer Closed. Handle in Well-Ventilated
Area.

MAR 10 1964

STORAGE AND DISPOSAL

Store in Original Container. Do Not
Transfer to Other Containers. Do Not
Reuse. Do Not Empty into Sewer or
Waterway. Do Not Burn. Do Not
Incinerate. Do Not Dump. Do Not
Pour into Ground.

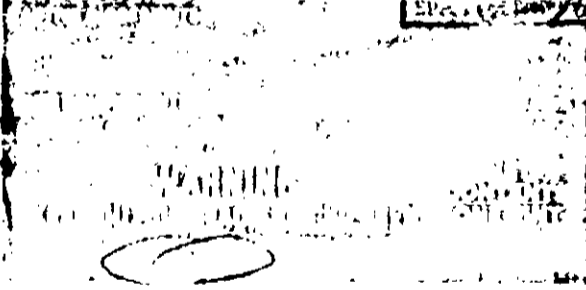
USE PRECAUTIONS

Use in Well-Ventilated Area. Do Not
Breathe Vapors. Do Not Inhale
Spray. Do Not Get on Skin. Do Not
Get in Eyes. Do Not Touch Food,
Feedstuffs or Domestic Water
Supplies. Do Not Touch Food Crops.
Do Not Touch Children or Pets.

RIGO

MAR 10 1964

7A-180





USE DIRECTIONS

In violation of Federal law to use this product in a manner inconsistent with its label.

PESTS OUT-OF-DOORS

General Information: Use this insecticide for control of certain pests on outside surfaces of buildings and on lawns and ornamental plants. Consult the label for the full range of pests and application directions.

Pests on Outside Surfaces of Buildings: Use product at the rate of 2.2-3 fluid ounces per gallon of water (5% emulsion) to control ants, cockroaches, earwigs, fleas, crickets, earwigs, fleas, mosquitoes, spiders and ticks by application as a residual spray or with a pump sprayer on the outside surfaces of buildings including porches, screens, eaves, chimneys, eaves, gutters, garbage refuse dumps and other areas where pests are likely to be present. Use the product on plants, shrubs and evergreens which are likely to be infested. Repeat treatment as needed to maintain effectiveness.

NOTE: To prevent infestation of buildings by ants, crickets, earwigs, fleas and spiders, it is suggested that a band of 6 to 10 feet wide around the perimeter of buildings also the building foundation to a height of 2 to 3 feet where pests are likely to be present. Use 1 pint of product per 100 gallons of water and apply as a drench spray at the rate of about 10 gallons spray per 1000 sq. ft. thoroughly wet the soil.

Pests of Lawns and other Ornamental and Recreational Turf Grass Areas: Use product to control pests listed in the following table by application at the recommended dosage and in accordance with the directions given below. Use the product in moderate water to obtain complete and uniform coverage of pest infested areas and apply as a complete pressure spray using suitable application equipment. Thoroughly water immediately after treatment to wash the insecticide into the turf or grass. For best results, the lawn should be mowed before treatment.

Pests of Ornamentals: Use this insecticide to control pests listed in the following table on flowering trees, shrubs, and evergreens. Use the product at the rate indicated in the following table. Dilute in water according to directions given in the table and apply using suitable hand or power sprayer. Apply in a manner to provide complete coverage. For best results apply a minimum of 2 to 3 gallons per 1000 sq. ft. of foliage on both upper and lower leaf surfaces and on trunk and limb areas. Attempt to penetrate dense foliage and avoid overspraying to the point of excess runoff. Treat when pests are present and repeat at 7 to 10 day intervals if needed. Do not use on azaleas, camellias, or other plants which are likely to be damaged by the product. Do not use on plants which are likely to be damaged by the product. Do not use on plants which are likely to be damaged by the product.

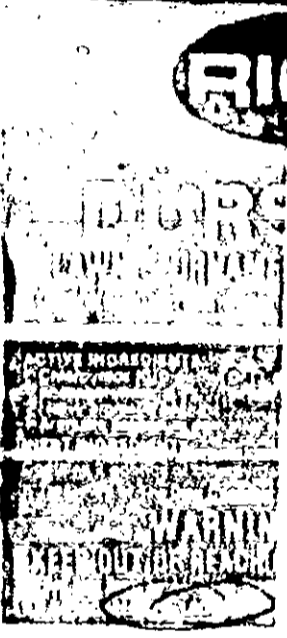
MAR 10 1992

STORAGE AND DISPOSAL

Precautions: Do not contaminate water, food, or feed by storage or disposal. **Storage:** Store in original container. **Disposal:** Pesticide spray should be disposed of as a hazardous waste. Do not reuse containers. **Spillage:** Clean up spills immediately. **Empty Containers:** Triple rinse and burn or incinerate. Do not reuse.

USE DIRECTIONS

In violation of Federal law to use this product in a manner inconsistent with its label. Consult the label for the full range of pests and application directions.



HIGO COMPANY

BEST DOCUMENT AVAILABLE

MAE-101982

STORAGE AND DISPOSAL

Precautionary Statements: spray mixture or treated area should be kept out of reach of children and pets. Avoid contact with treated areas. Do not eat, drink or use tobacco products in treated areas. Do not get on hands or face. Wash hands thoroughly with soap and water. Do not use treated areas as a toilet. Do not allow treated areas to be used as a water source. Do not use treated areas as a water source. Do not use treated areas as a water source.

USE DIRECTIONS

Use a watering can or sprayer to apply the product to a lawn. Apply to the lawn surface. Do not apply to flowers, shrubs, or other ornamental plants. Do not apply to lawns that have been recently fertilized. Do not apply to lawns that have been recently watered. Do not apply to lawns that have been recently mowed.

DOSES and DIRECTIONS for USE on TURF

Grubs (European Chafers and Japanese Beetles)

1.0 - 1.0 oz

For grubs spray when grubs are young and actively feeding near the soil surface (usually during July and August or as recommended by your local Agricultural Extension Service specialist for your area). Irrigate the treated area after spraying.

White grubs (European Chafers and Japanese Beetles)

3.0 to 6.0 oz

For white grubs spray when grubs are young and actively feeding near the soil surface (usually during July and August or as recommended by your local Agricultural Extension Service specialist for your area). Irrigate the treated area after spraying.

Grubs (European Chafers and Japanese Beetles)

3.0 - 6.0 oz

For grubs spray when grubs are young and actively feeding near the soil surface (usually during July and August or as recommended by your local Agricultural Extension Service specialist for your area). Irrigate the treated area after spraying.

Retreat when pests first appear. For sod webworms delay watering or irrigating the treated area for 12 to 14 hours after treatment.

Retreat suspected problem areas in mid-April and again in mid-May or as recommended by your local Agricultural Extension Service specialist in your area.

For white grubs spray when grubs are young and actively feeding near the soil surface (usually during July and August or as recommended by your local Agricultural Extension Service specialist for your area). Irrigate the treated area after spraying.

Retreat when pests first appear. Retreat when needed.

NOTE: Mosquitoes and other biting insects are not controlled by this product. For control of mosquitoes and other biting insects use a mosquito coil or mosquito netting. Do not use in areas where children and pets are present. Do not use on lawns that have been recently fertilized. Do not use on lawns that have been recently watered. Do not use on lawns that have been recently mowed.

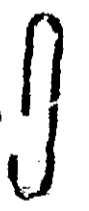
Warrior

ACTIVE INGREDIENTS: Deltamethrin (0.25%) (Type I pyrethroid insecticide)

OTHER INGREDIENTS: Water

NET WEIGHT: 1.0 LBS (0.45 kg)

MAE-101982



MAR-10-1982

STORAGE AND DISPOSAL
 Keep this product in its original container, tightly closed, in a cool, dry place. Do not store in areas where children or pets can reach. Do not mix with other pesticides. Do not use in areas where it may cause injury to humans, animals, or plants. Do not use in areas where it may cause pollution of water bodies. Do not use in areas where it may cause damage to property. Do not use in areas where it may cause damage to crops. Do not use in areas where it may cause damage to livestock. Do not use in areas where it may cause damage to wildlife. Do not use in areas where it may cause damage to fish. Do not use in areas where it may cause damage to birds. Do not use in areas where it may cause damage to insects. Do not use in areas where it may cause damage to other organisms. Do not use in areas where it may cause damage to the environment. Do not use in areas where it may cause damage to the atmosphere. Do not use in areas where it may cause damage to the soil. Do not use in areas where it may cause damage to the ground. Do not use in areas where it may cause damage to the water. Do not use in areas where it may cause damage to the air. Do not use in areas where it may cause damage to the land. Do not use in areas where it may cause damage to the sea. Do not use in areas where it may cause damage to the sky. Do not use in areas where it may cause damage to the earth. Do not use in areas where it may cause damage to the universe. Do not use in areas where it may cause damage to the world. Do not use in areas where it may cause damage to the galaxy. Do not use in areas where it may cause damage to the universe. Do not use in areas where it may cause damage to the world. Do not use in areas where it may cause damage to the galaxy. Do not use in areas where it may cause damage to the universe.

USE DIRECTIONS
 A solution of Federal 100 to the product is a water spray which is effective against the insects listed on the label. For complete directions for use, including use on ornamental plants, see the label. Do not use in areas where it may cause damage to humans, animals, or plants. Do not use in areas where it may cause pollution of water bodies. Do not use in areas where it may cause damage to property. Do not use in areas where it may cause damage to crops. Do not use in areas where it may cause damage to livestock. Do not use in areas where it may cause damage to wildlife. Do not use in areas where it may cause damage to fish. Do not use in areas where it may cause damage to birds. Do not use in areas where it may cause damage to insects. Do not use in areas where it may cause damage to other organisms. Do not use in areas where it may cause damage to the environment. Do not use in areas where it may cause damage to the atmosphere. Do not use in areas where it may cause damage to the soil. Do not use in areas where it may cause damage to the ground. Do not use in areas where it may cause damage to the water. Do not use in areas where it may cause damage to the air. Do not use in areas where it may cause damage to the land. Do not use in areas where it may cause damage to the sea. Do not use in areas where it may cause damage to the sky. Do not use in areas where it may cause damage to the earth. Do not use in areas where it may cause damage to the universe. Do not use in areas where it may cause damage to the world. Do not use in areas where it may cause damage to the galaxy. Do not use in areas where it may cause damage to the universe.

Apply the spray to the base of the plant. Apply at the rate of 1 to 2 quarts per 100 square feet. Do not use in areas where it may cause damage to humans, animals, or plants. Do not use in areas where it may cause pollution of water bodies. Do not use in areas where it may cause damage to property. Do not use in areas where it may cause damage to crops. Do not use in areas where it may cause damage to livestock. Do not use in areas where it may cause damage to wildlife. Do not use in areas where it may cause damage to fish. Do not use in areas where it may cause damage to birds. Do not use in areas where it may cause damage to insects. Do not use in areas where it may cause damage to other organisms. Do not use in areas where it may cause damage to the environment. Do not use in areas where it may cause damage to the atmosphere. Do not use in areas where it may cause damage to the soil. Do not use in areas where it may cause damage to the ground. Do not use in areas where it may cause damage to the water. Do not use in areas where it may cause damage to the air. Do not use in areas where it may cause damage to the land. Do not use in areas where it may cause damage to the sea. Do not use in areas where it may cause damage to the sky. Do not use in areas where it may cause damage to the earth. Do not use in areas where it may cause damage to the universe. Do not use in areas where it may cause damage to the world. Do not use in areas where it may cause damage to the galaxy. Do not use in areas where it may cause damage to the universe.

DOSEAGES and OILYONS TO USE on ORNAMENTAL PLANTS

Pests Controlled	Amount of FEDERAL 100 & ORNAMENTAL INSECT SPRAY in Water to 100 sq ft
Aphids	1.0 qt
Scale	1.0 qt
Spider mites	1.0 qt
Whiteflies	1.0 qt
Yellow-necked caterpillar	1.0 qt
Japanese weevil	1.0 qt
Red-tipped caterpillar	1.0 qt
Thrips (exposed)	1.0 qt
Scale crawlers	1.0 qt
Oak leafhopper	1.0 qt
Pine needle	1.0 qt
Yew	1.0 qt
White peach	1.0 qt

For peach tree: 1.0 qt per 100 sq ft. For other trees: 1.0 qt per 100 sq ft. Do not use in areas where it may cause damage to humans, animals, or plants. Do not use in areas where it may cause pollution of water bodies. Do not use in areas where it may cause damage to property. Do not use in areas where it may cause damage to crops. Do not use in areas where it may cause damage to livestock. Do not use in areas where it may cause damage to wildlife. Do not use in areas where it may cause damage to fish. Do not use in areas where it may cause damage to birds. Do not use in areas where it may cause damage to insects. Do not use in areas where it may cause damage to other organisms. Do not use in areas where it may cause damage to the environment. Do not use in areas where it may cause damage to the atmosphere. Do not use in areas where it may cause damage to the soil. Do not use in areas where it may cause damage to the ground. Do not use in areas where it may cause damage to the water. Do not use in areas where it may cause damage to the air. Do not use in areas where it may cause damage to the land. Do not use in areas where it may cause damage to the sea. Do not use in areas where it may cause damage to the sky. Do not use in areas where it may cause damage to the earth. Do not use in areas where it may cause damage to the universe. Do not use in areas where it may cause damage to the world. Do not use in areas where it may cause damage to the galaxy. Do not use in areas where it may cause damage to the universe.

Imported Fire Ant Treatment of potted container and nursery stock: Use product to control imported fire ants in soil of potted plants and nursery stock. Apply at the rate of 1.0 qt per 100 sq ft of soil. Do not use in areas where it may cause damage to humans, animals, or plants. Do not use in areas where it may cause pollution of water bodies. Do not use in areas where it may cause damage to property. Do not use in areas where it may cause damage to crops. Do not use in areas where it may cause damage to livestock. Do not use in areas where it may cause damage to wildlife. Do not use in areas where it may cause damage to fish. Do not use in areas where it may cause damage to birds. Do not use in areas where it may cause damage to insects. Do not use in areas where it may cause damage to other organisms. Do not use in areas where it may cause damage to the environment. Do not use in areas where it may cause damage to the atmosphere. Do not use in areas where it may cause damage to the soil. Do not use in areas where it may cause damage to the ground. Do not use in areas where it may cause damage to the water. Do not use in areas where it may cause damage to the air. Do not use in areas where it may cause damage to the land. Do not use in areas where it may cause damage to the sea. Do not use in areas where it may cause damage to the sky. Do not use in areas where it may cause damage to the earth. Do not use in areas where it may cause damage to the universe. Do not use in areas where it may cause damage to the world. Do not use in areas where it may cause damage to the galaxy. Do not use in areas where it may cause damage to the universe.

ACTIVE INGREDIENTS
 Permethrin (1.5% solution of 100) 1.5%
 PIPERONYL BUTYL CARBAMATE (0.5% solution of 100) 0.5%
KEEP OUT OF REACH OF CHILDREN
CAUTION
 See back of label for complete directions for use.

RIGO COMPANY

Statement of Practical Treatment
 If it is inhaled, remove clothing. Get medical attention immediately. In case of contact with skin, wash thoroughly with soap and water. If in eyes, flush with water. If swallowed, do not induce vomiting. Call a physician for treatment.

Note to Physician: In case of acute poisoning, treatment should be based on the clinical picture. Do not induce vomiting if the patient is unconscious.

Environmental Hazards
 This material is not known to be a carcinogen, a mutagen, or an environmental hazard. It is not known to be a reproductive toxin. It is not known to be a developmental or reproductive toxin.

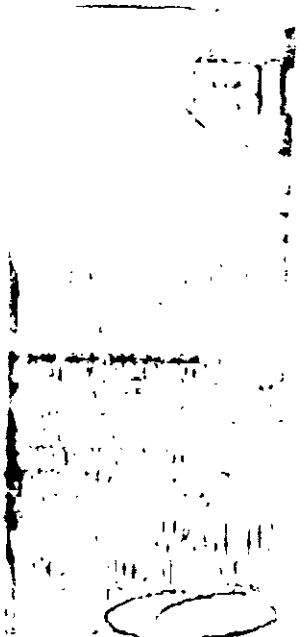
STORAGE AND DISPOSAL
 Store in a cool, dry place. Do not store in direct sunlight. Do not store near heat or fire. Do not store in a confined space. Do not store in a container that is damaged or leaking. Do not store in a container that is not properly labeled. Do not store in a container that is not properly sealed. Do not store in a container that is not properly secured.

NOTICE: This material is not to be used for any purpose other than that for which it is intended. Do not use for food or for any other purpose. Do not use for any purpose for which it is not designed.

RIGO COMPANY
 BUCKNER, KENTUCKY

STORAGE AND DISPOSAL
 Do not store in direct sunlight. Do not store near heat or fire. Do not store in a confined space. Do not store in a container that is damaged or leaking. Do not store in a container that is not properly labeled. Do not store in a container that is not properly sealed. Do not store in a container that is not properly secured.

USE INSTRUCTIONS
 Do not use for food or for any other purpose. Do not use for any purpose for which it is not designed.



BEST DOCUMENT AVAILABLE