

PRECAUTIONARY STATEMENTS
Hazards to Humans and Domestic Animals
 Do not breathe vapors or spray mist. Do not get in eyes. Contaminated material causes eye irritation. Use only with adequate ventilation. Wash contaminated clothing before re-use.
 This product may cause cholinesterase inhibition. Atropine by injection is antidote. (2-PAM, PROTOFAM, chlorox) may be effective as an adjunct to atropine. Use as directed.

Do not contaminate water by cleaning of equipment or disposal of wastes. Do not contaminate feed or food. Do not use in milk processing rooms, including milk houses and milk storage rooms. Do not use in dairies.

STATEMENT OF PRACTICAL TREATMENT If swallowed: Do not induce vomiting. Call a physician immediately. If inhaled: In case of contact with irritant, stop breathing and immediately wash skin with soap and water. If in eyes: Flush eyes with plenty of water for 15 minutes. Call a physician immediately. **HAZARDS** This product is toxic to fish, birds and other wildlife. Keep out of water streams or ponds. Do not apply where runoff is likely to occur. Do not apply when weather conditions favor drift from areas treated.

PHYSICAL OR CHEMICAL HAZARDS Do not use on, or near, heat or open flame.

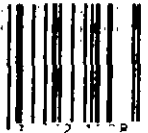
REQUIRED CLOTHING AND EQUIPMENT FOR APPLICATIONS All applicators, including homeowners, baggers and all personnel involved in the mixing, loading and transferring operations must wear protective clothing and equipment as indicated below. All are exempt from this requirement. This protective clothing and equipment to be worn is: a. Impermeable gloves (for example, rubber or plastic covered reinforced gloves); b. Boots or shoe covers; c. Long-sleeved shirts and long pants; d. Well-ventilated hat; e. Respirators must be worn by baggers and mixer-loaders.

DIRECTIONS FOR USE It is a violation of Federal law to use this product in a manner inconsistent with its labeling.

STORAGE AND DISPOSAL Store in original container, away from heat, flame, direct sunlight. Do not reuse empty container. Wrap for recycling collection.

NET ONE PINT
 BUCKNER COMPANY BUCKNER KY 40009

FOR ADDITIONAL INFORMATION



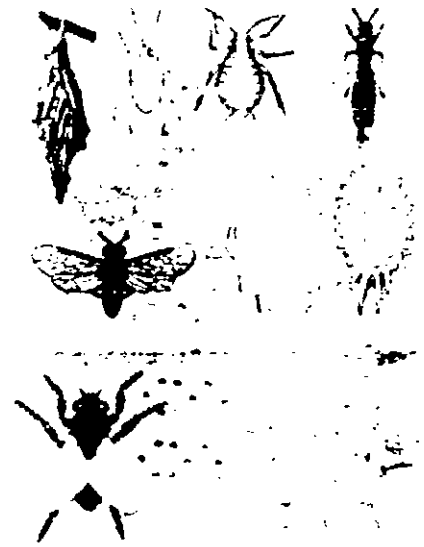

RIGO'S BEST
CYGON 2-E
 SYSTEMIC INSECTICIDE




EPA Reg. No. 27-1113
 EPA Est. No. 27-1113

WARNING: KEEP OUT OF REACH OF CHILDREN
 See Back Panel for Additional Precautionary Statements

ACTIVE INGREDIENTS: Dimethoate (0-Dimethyl S-(methylcarbamoyl)methyl) phosphorothioate: 23.4% **INERT INGREDIENTS:** 76.6% **TOTAL: 100.0%**
 (One gallon contains 2 pounds of Dimethoate)



RIGO'S BEST
CYGON 2-E
 SYSTEMIC INSECTICIDE

For use on listed vegetables, fruits, nuts, flowers, ornamentals, and trees.

SEE BACK PANEL FOR ADDITIONAL STATEMENT AND DIRECTIONS FOR USE. SEE BACK PANEL FOR ADDITIONAL STATEMENTS.

For Use

according to label directions.
Do not contaminate water by leaching of equipment or disposal of
containers. drinking fountains, water and feed troughs. Do not use
with hoses and leaky spray nozzles. Do not use in basins.

STATEMENT OF PRACTICAL TREATMENT: If Swallowed: Do not
induce vomiting. If On Skin: In case of contact, remove contaminated clothing,
wash with soap and water. If In Eyes: Flush eyes with plenty of water for 15 min.

ENVIRONMENTAL HAZARDS: This product is toxic to fish, birds, and
streams or ponds. Do not apply where runoff is likely to occur. Do
not apply to areas treated.

PERSONAL CHEMICAL HAZARDS: Do not use
near children, pets, and equipment. Do not
use on food crops. Do not use on
plants. Do not use on plants.
Do not use on plants.
Do not use on plants.
Do not use on plants.

NET CONTENTS ONE PINT
MADE IN U.S.A.

76713
EPA Reg. No. 76713

READ ENTIRE LABEL

DIRECTIONS FOR USE:
This product is a systemic insecticide for the control of
various insects on plants.
Apply to plants as follows:
1. Mix with water as directed on label.
2. Spray plants thoroughly with the mixture.
3. Repeat applications as necessary.
4. Do not use on plants.
5. Do not use on plants.
6. Do not use on plants.

OUTDOOR ORNAMENTAL PLANTS
This product is effective against the following insects:
Aphids, Beetles, Caterpillars, Fleas, Flies, Gnats,
Grasshoppers, Ground Squirrels, House Flies, Ladybugs,
Leafhoppers, Lice, Mites, Mosquitoes, Spiders, Termites,
Wasps, and Weevils.

Plants:
Carnations
Cypress
Ficus

Arborevitae To control aphids, bagworms and mites, apply 4 teaspoons per gallon of water.
Birch To control aphids and leafminers, apply 1 teaspoon per gallon of water. For leafminers, apply when leaves are expanded (about mid-May) and repeat in early July.

Paint Method To control leafminers, undiluted CYGON 2 E may be painted on the bark of the tree. The chemical is then absorbed into the system of the tree and is carried by the sap to the leaves. Paint a band of undiluted CYGON 2 E around the trunk below the lowest branches. The width of this band must be equal to the thickness of the trunk at the location (Maximum 6"). Make the first treatment when the buds break. Weather conditions are important for correct timing of treatment. If weather is warm and buds break fast, apply when green tips are visible. In cold weather, it is better to wait until the leaves have almost completely unfolded. Make a second treatment 6 weeks after the first. Do not make more than two treatments per season. Newly planted trees and those with trunks less than 1 inch thick may be injured. Do not use on the trunk of any other trees or severe injury may result.

Banana To control leafminers, mealy bugs and mites, apply 2 teaspoons per gallon of water. For leafminers, apply in spring when leafminer flies first appear or in early summer for control of larvae in infested leaves.

Cedar To control bagworms and mites, apply 4 teaspoons per gallon of water.

Espeyean To control aphids and scale, apply 5 teaspoons per gallon of water.

Gordoniae To control sea scale and whinnies, apply 2 teaspoons per gallon of water.

Gerberas To control thrips, apply 2 teaspoons per gallon of water.

Gladiolus To control aphids and thrips, apply 2 teaspoons per gallon of water.

Iris To control aphids, iris borer and thrips, apply 2 teaspoons per gallon of water. For borer control, spray when new leaves are 5 to 6 inches tall.

Perseetias (Outdoor Plants) To control mites, whiteflies, mealy bugs and aphids, apply 2 teaspoons per gallon of water.

Ficus Mendle (Outdoor Plants) To control thrips, apply 2 teaspoons per gallon of water. Do not use on potted plants.

Holly (English American - do not use on Burford variety) To control leafminers, mites and soft scale, apply 2 teaspoons per gallon of water. For leafminers, apply in spring when leafminer flies first appear or in early summer for the control of larvae in infested leaves.

Hosta To control mites and scale, apply 2 teaspoons per gallon of water.

Jambur To control aphids, bagworms, mealy bugs and mites, apply 4 teaspoons per gallon of water.

Oak To control golden oak scale, apply 4 teaspoons per gallon of water.

Pine To control aphids, bagworms, European pine

shoot moth. Nantucket pine tip moth. Zimmerman pine moth. apply 4 teaspoons per gallon of water.
 Tarax: To control Fletcher scale, mealy bugs and mites, apply 4 teaspoons per gallon of water.

VEGETABLES

In the garden apply CYGON 2-E as a foliage spray when insects or their damage is first noticed and repeat as necessary for control. Follow the recommended application timing and intervals for the vegetables listed. Do not apply to any crop not listed on the label. Rates are expressed in teaspoons per gallon of water. Consult the chart below for the amount of diluted spray to apply for specific row spacing. All rates are based on a broadcast rate of 150 gallons per acre. During early stages of growth proportionately less spray will be required. Always spray for thorough coverage. Follow the time interval between last application and harvest indicated by the number in () following each vegetable. A (0) indicates product can be used through day of harvest. Do not graze treated areas or feed treated plant parts or ensilage to livestock.

Amount of diluted spray per 100 ft. of row when spacing is

12 inches	24 inches	36 inches	48 inches
1/2 gallon	2/3 gallon	1 gallon	1 1/2 gallon

Beans (Dry Green Lima Snap) (0) To control aphids, leafhoppers, leafminers, lygus bugs and mites, apply 1/2 to 1 1/2 teaspoons per gallon

of water (1 to 2 pints per acre).
 Broccoli (7), Cabbage (7), Cauliflower (7) To control aphids, apply 1/2 to 1 1/2 teaspoons per gallon of water (1 to 2 pints per acre).
 Celeriac (14), Endive (Escarole) (14), Kale (14), Lettuce (Head 7, Leaf 14), Mustard Greens (14), Spinach (14), Swiss Chard (14), and Turnip (14) To control aphids, leafhoppers and leafminers, apply 1/2 to 1 1/2 teaspoons per gallon of water (1 pint per acre).
 Melons (3) To control aphids, leafhoppers, leafminers, and thrips, apply 1/2 to 1 1/2 teaspoons per gallon of water (1 to 2 pints per acre).
 Peas (0) To control aphids, apply 1/2 to 1 1/2 teaspoons per gallon of water (1 to 2 pints per acre).
 Restriction: Make only one application per season.
 Peppers (0) To control aphids, leafminers, pepper maggots, apply 1/2 to 1 1/2 teaspoons per gallon of water (1 to 2 pints per acre).
 Potatoes (0), Tomatoes (7) To control aphids, grasshoppers, leafhoppers and leafminers, apply 1/2 to 1 1/2 teaspoons per gallon of water (1 to 2 pints per acre).

FRUITS AND NUTS

FRUITS: Restriction: Do not allow live trees to graze in treated orchard.
 Apples (28) To control apple maggot, codling moth, etc., apply 2 teaspoons per gallon of water (2 pt. 100 gal. water). Do not apply during the bloom period. Apply at petal fall and every 10 to 14 days thereafter until control is achieved.

* Under heavy infestations some stem injury may occur. * Midwest and eastern states only.

Apples (28) Pears (28) To control aphids, leafhoppers and mites (except rust mites) apply 1 to 2 teaspoons per gallon of water (1 to 2 pt. 100 gals. water). Do not apply during the bloom period.

Grapefruit, Lemons, Orange, Tangerines To control aphids, apply 1 to 2 teaspoons per gallon of water (1 to 2 pt. 100 gals. water) as an outside coverage spray. Do not apply within 15 days of harvest. To control mites (except rust mites) apply 1 to 2 teaspoons per gallon of water (1 to 2 pt. 100 gals. water) as a thorough distribution coverage spray. Do not apply within 15 days of harvest. To control scales (except black or snow) apply 2 to 3 teaspoons per gallon of water (2 to 3 pt. 100 gals. water) as a thorough coverage spray. Do not apply within 45 days of harvest. To control thrips apply 1 to 2 teaspoons per gallon of water (1 to 2 pt. 100 gals. water) as a mist spray. Do not apply within 15 days of harvest. To control whiteflies apply 2 teaspoons per gallon of water (2 pt. 100 gals. water) as a thorough distribution coverage spray. Do not apply within 15 days of harvest. Do not apply during bloom period. Do not use on citrus seedlings. Make no more than 2 applications to mature fruit. Do not enter treated groves within 4 days of last application.

NOTE:

Peaches (21) To control aphids, mites and leafhoppers apply 1/2 teaspoon per 1000 sq. ft.

(1 1/3 pt. acre). Do not graze livestock in treated groves.

HOUSEFLIES

Residual wall sprays: For the control of houseflies including resistant strains in dairy barns, hog pens, calf barns, poultry houses and other farm buildings, apply a 7% residual spray to the ceilings, walls, stanchions, etc. Prepare the mixture by mixing 5 ounces of CYGON 2 E in 1 gallon of water. Thoroughly wet all fly resting areas to the point of run off. One gallon of spray will cover up to 1,000 sq. ft. of surface. CYGON 2 E controls flies up to 8 weeks or longer. Repeat applications should be made when necessary. Remove all animals and poultry from buildings prior to spraying.

CYGON 2 E IS ACCEPTABLE FOR USE AS A RESIDUAL TYPE INSECTICIDE IN AND AROUND FEDERALLY INSPECTED MEAT PACKING PLANTS EXCEPT WHERE MEAT FOOD PRODUCTS ARE PROCESSED OR HANDLED. DO NOT USE IN EDIBLE PRODUCT AREAS OF FOOD PROCESSING PLANTS, RESTAURANTS OR OTHER AREAS WHERE FOOD IS COMMERCIALY PREPARED OR PROCESSED. DO NOT USE IN SERVICE AREA WHILE FOOD IS EXPOSED.

DO NOT CONTAMINATE FEED AND FOODSTUFFS, DRINKING FOUNTAINS, LITTER AND FEED TROUGHS. DO NOT USE IN MILK PROCESSING ROOMS INCLUDING MILK HOUSES AND MILK STORAGE ROOMS. DO NOT USE IN HOMES.

Spot sprays. For the control of household flies, apply 1/2 pint CYGON 2 E in 5 quarts of water and spray liberally on all fly breeding areas. Repeat applications should be made when necessary. Good sanitation is a necessary part of any effective fly control program.

General outside use. For the control of houseflies around homes and recreation areas, garbage cans, animal quarters, food processing plants, warehouses, loading docks and refuse areas, thoroughly spray exposed surfaces, such as walls, fences, garbage and refuse containers with 3 tablespoons of CYGON 2 E in 3 quarts of water. Repeat applications should be made when necessary.

Major sprays. For the control of housefly maggots, mix 1/2 pint CYGON 2 E in 5 quarts of water and apply as a coarse spray or with a sprayer on the fly breeding area, such as building structure, inclosed waste houses, garbage dumps and manure piles. Repeat application as additional structure or garbage is added.

NOTICE: Buyer makes no warranty, expressed or implied, concerning the use of this product other than indicated on the label. Buyer assumes all risk of use and handling of this material when such use and handling is contrary to label instructions.

245 846