



Atroban[®] WP

Long-Lasting Insecticidal Spray For Livestock Premises

Active Ingredient
 Pyrethrin
 (1) phenothiazine, methy...
 but of effective...
 carbonyl, etc.
Inert Ingredients

KEEP OUT OF REACH OF CHILDREN
CAUTION
 SEE SIDE PANEL FOR ADDITIONAL
 PRECAUTIONARY STATEMENTS

NET WT. 6.67 oz (189g)



PRECAUTIONARY STATEMENTS
HAZARDS TO HUMANS & DOMESTIC ANIMALS
CAUTION
 Harmful if absorbed through skin. Avoid contact with skin, eyes or clothing. Avoid breathing of spray mist. Get medical attention if irritation persists.
STATEMENT OF PRACTICAL TREATMENT
 IF ON SKIN: Remove contaminated clothing and immediately wash skin with soap and water.
 IF IN EYES: Immediately flush eyes with plenty of water. Get medical attention if irritation persists.
ENVIRONMENTAL HAZARDS
 This product is extremely toxic to fish. Do not add directly to water. Do not contaminate water by cleaning of equipment or disposal of waste.

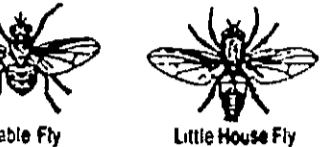
DIRECTIONS FOR USE
GENERAL CLASSIFICATION
 It is a violation of Federal law to use this product in a manner inconsistent with its labeling.
For use in and around Horse, Beef, Dairy, Swine, Sheep, Goat and Poultry Premises and outside Meat Processing Premises for Control of House Flies, Stable Flies and Little House Flies (*Fannia* spp.)
 Dilute at the rate of 1 can (6.67 oz) ATROBAN WP in 10 gallons of clean water and mix thoroughly. For small amounts of finished spray, mix 3 rounded tablespoons in 2 gallons of water. Apply finished spray to surfaces where flies rest at the rate of 1 can per

per 750-1000 sq. ft. or to the point of runoff. Timing and frequency of applications should be based upon flies reaching nuisance levels but not more often than once every two weeks. If, under conditions of heavy fly pressure, longer residual control is desired, it is permissible to double the above concentration for premise application by diluting at the rate of 1 can (6.67 oz) of ATROBAN WP in 5 gallons of water. Do not make direct applications to animals, feed or water. Do not use in milk rooms. Insure that animals, feed and water are not contaminated by spray drift.

STORAGE AND DISPOSAL
 Do not contaminate water, food or feed by storage or disposal.
Storage: Store in a cool, dry place.
Pesticide Disposal: Wastes resulting from the use of this product may be disposed of on site or at an approved waste disposal facility.
Container Disposal: Completely empty can into application equipment. Then dispose of can in a sanitary landfill or by incineration if allowed by State and local authorities.

Wellcome Animal Health Division
 Kenilworth, N.J. 07033

MAY 15 198



Stable Fly
Little House Fly
n WP

Insecticidal Spray
Premises

Mark 3, 1, 7
EPA Reg. No. 101-10-0104

KEEP OUT OF REACH OF CHILDREN
CAUTION
SEE BACK FOR ADDITIONAL
PRECAUTIONARY STATEMENTS

EPA EST. CH. 101-10-0104
EPA Reg. No. 101-10-0104



**PRECAUTIONARY STATEMENTS
HAZARDS TO HUMANS & DOMESTIC ANIMALS
CAUTION**

Harmful if absorbed through skin. Avoid contact with skin, eyes or clothing. Avoid breathing of spray mist. Get medical attention if irritation persists.

STATEMENT OF PRACTICAL TREATMENT

IF ON SKIN: Remove contaminated clothing and immediately wash skin with soap and water.

IF IN EYES: Immediately flush eyes with plenty of water. Get medical attention if irritation persists.

ENVIRONMENTAL HAZARDS

This product is extremely toxic to fish. Do not add directly to water. Do not contaminate water by cleaning of equipment or disposal of waste.

**DIRECTIONS FOR USE
GENERAL CLASSIFICATION**

It is a violation of Federal law to use this product in a manner inconsistent with its labeling.

For use in and around Horse, Beef, Dairy, Swine, Sheep, Goat and Poultry Premises and outside Meat Processing Premises for Control of House Flies, Stable Flies and Little House Flies (*Fannia* spp.)

Dilute at the rate of 1 can (6.67 oz) of ATROBAN WP in 10 gallons of clean water and mix thoroughly. For small amounts of finished spray, mix 3 rounded tablespoons in 2 gallons of water. Apply finished spray to surfaces where flies rest at the rate of 1 gallon

per 750-1000 sq. ft., or to the point of runoff. Timing and frequency of applications should be based upon flies reaching nuisance levels but not more often than once every two weeks. If, under conditions of heavy fly pressure, longer residual control is desired, it is permissible to double the above concentration for premise application by diluting at the rate of 1 can (6.67 oz) of ATROBAN WP in 5 gallons of water. Do not make direct applications to animals, feed or water. Do not use in milk rooms. Insure that animals, feed and water are not contaminated by spray drift.

STORAGE AND DISPOSAL

Do not contaminate water, food or feed by storage or disposal.

Storage: Store in a cool, dry place.

Pesticide Disposal: Wastes resulting from the use of this product may be disposed of on site or at an approved waste disposal facility.

Container Disposal: Completely empty can into application equipment. Then dispose of can in a sanitary landfill or by incineration if allowed by State and local authorities.

Wellcome Animal Health Division
Bullington, Ware, Herts., U.K.
Kalamazoo, Michigan, U.S.A.

MAY 15 1984

Handwritten signature or initials.

59-194 PM 15



Atroban® WP

Long-Lasting Insecticidal Spray For Livestock Premises

Active Ingredient
Permethrin
(3-phenoxyphenyl)methyl(±)-cis, trans-3(2,2-dichloroethenyl)-2,2-dimethylcyclopropane-carboxylate*

25.0%
75.0%
100.0%

*cis:trans ratio: Max 55% cis and min 45% trans

KEEP OUT OF REACH OF CHILDREN
CAUTION
SEE SIDE PANEL FOR ADDITIONAL
PRECAUTIONARY STATEMENTS

NET WT. 6.67 oz (189g) EPA Est. 59-N6-1
EPA Reg. No. 59-194



PRECAUTIONARY STATEMENTS
HAZARDS TO HUMANS & DOMESTIC ANIMALS
CAUTION
Harmful if absorbed through skin. Avoid contact with skin, eyes or clothing. Avoid breathing of spray mist. Get medical attention if irritation persists.
STATEMENT OF PRACTICAL TREATMENT
IF ON SKIN: Remove contaminated clothing and immediately wash skin with soap and water.
IF IN EYES: Immediately flush eyes with plenty of water. Get medical attention if irritation persists.
ENVIRONMENTAL HAZARDS
This product is extremely toxic to fish. Do not add directly to water. Do not contaminate water by cleaning of equipment or disposal of waste.

DIRECTIONS FOR USE
GENERAL CLASSIFICATION
It is a violation of Federal law to use this product in a manner inconsistent with its labeling.
For use in and around Horse, Beef, Dairy, Swine, Sheep, Goat and Poultry Premises and *outside* Meat Processing Premises for Control of House Flies, Stable Flies and Little House Flies (*Fannia* spp.):
Dilute at the rate of 1 can (6.67 oz) of ATROBAN WP in 10 gallons of clean water and mix thoroughly. For small amounts of finished spray, mix 3 rounded tablespoonfuls in 2 gallons of water. Apply finished spray to surfaces where flies rest at the rate of one gallon

per 750-1000 sq. ft., or to the point of applications should be based upon but not more often than once every 1 of heavy fly pressure, longer residu miss'ble to double the above concer by diluting at the rate of 1 can (6.67 o of water. Do not make direct applica Do not use in milk rooms. Insure that contaminated by spray drift.

STORAGE AND
Do not contaminate water, food or f
Storage: Store in a cool, dry place.
Pesticide Disposal: Wastes resultin may be disposed of on site or at facility.
Container Disposal: Completely equipment. Then dispose of can i cineration if allowed by State and l

RES DOCUMENT

Wellcome Animal Health Division
Burroughs Wellcome Co.
Kansas City, MO 64108 U.S.A.
11097