

Dri-Kil[®]

Extra

For Control of Lice and Horn Flies on Beef and Dairy Cattle and Lice on Swine

Active Ingredient
 0,0-Diethyl 0-(3-chloro-4-methyl-2-oxo-(2H)-1-benzopyran-7-yl) phosphorothioate 1%
Inert Ingredients 99%
 100%

KEEP OUT OF REACH OF CHILDREN
WARNING
 SEE BACK PANEL FOR ADDITIONAL
 PRECAUTIONARY STATEMENTS

6163

Net Weight 25 Pounds

EPA Est. 59-NC-1
 EPA Reg. No. 59-175



COOPER

**PRECAUTIONARY STATEMENTS
 HAZARDS TO HUMANS & DOMESTIC ANIMALS
 WARNING**

May be fatal if swallowed, inhaled or absorbed through skin. Do not breathe dust. Do not get in eyes, on clothing. Wash hands thoroughly after handling product and before eating or smoking.

STATEMENT OF PRACTICAL TREATMENT

If Swallowed: Call a physician or Poison Control Center immediately. Drink 1 or 2 glasses of water, vomiting by touching back of throat with finger, or if available, by administering syrup of ipecac. Repeat if fluid is clear. Do not induce vomiting or give anything by mouth to an unconscious person.

If Inhaled: Remove victim to fresh air and apply respiration if indicated.

If On Skin: Remove contaminated clothing and immediately wash skin thoroughly with soap and water.

If In Eyes: Immediately flush eyes thoroughly for at least 5 minutes with plenty of water. Get medical attention if irritation persists.

Note To Physician: Prolonged exposure will result in cholinesterase depression. ATROPINE IS ANTIDOTE. It is also antidotal and may be administered in conjunction with atropine.

ENVIRONMENTAL HAZARDS

This product is toxic to fish, birds and other wildlife. Keep out of lakes, streams or ponds. Do not contaminate by cleaning of equipment or by disposal of wastes. Apply this product only as specified on this label.

DIRECTIONS FOR USE

It is a violation of Federal law to use this product in a manner inconsistent with its labeling. Important: Read the entire label carefully before using Dri-Kil Extra. Hold container at a distance from the area that will permit even distribution of the dust. 1 oz of Dri-Kil Extra equals approximately three level tablespoons.

Beef and Dairy Cattle: To Control Lice and Horn Flies. Apply not more than 2 oz Dri-Kil Extra dust per animal into hair over the head, neck, shoulders, back and tailhead. Repeat as necessary. No interval is required between treatment and use of meat or milk for food.

Swine: To Control Lice. Apply not more than 1 oz of Dri-Kil Extra dust per animal as a uniform coat over the back. Repeat as necessary but not more often than once every 10 days. No interval is required between treatment and use of meat as food.

Bedding: Apply 2 oz of Dri-Kil Extra dust evenly over each 30 square feet of fresh, dry bedding. Repeat as not more often than once every 10 days.

Note: In severe infestations, both individual animals and bedding may be treated as directed above.

Use Restrictions: For external insecticidal use on the above specified animals only. Do not contaminate water or water utensils. Provide thorough ventilation while dusting. Do not apply to sick, stressed or convalescing animals.

STORAGE AND DISPOSAL

Do not contaminate water, food or feed by storage or disposal.

Storage: Store in cool, dry place.

Pesticide Disposal: Pesticides wastes are acutely hazardous. Improper disposal of excess pesticide, spray can, or rinsate is a violation of Federal Law. If these wastes cannot be disposed of by use according to label instructions, contact your State Pesticide or Environmental Control Agency, or the Hazardous Waste representative at the EPA Regional Office for guidance.

Container Disposal: Triple rinse (or equivalent). Then offer for recycling or reconditioning, or dispose of in a sanitary landfill, or incineration, or if allowed by State and local authorities, by burning. Stay out of smoke.

Wellcome Animal Health Division
 Kenilworth, New Jersey 07033
 Kenilworth, New Jersey 07033

59-175



Horn Flies on Beef and Swine

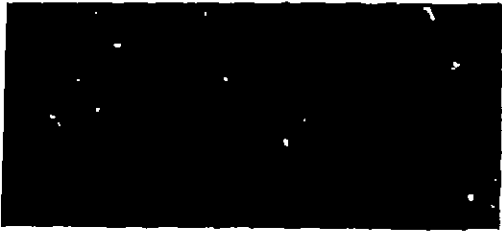
thyl-2-oxo-(2H)-
othioate 1%
..... 99%
..... 100%

**KEEP OUT OF REACH OF CHILDREN
WARNING
SEE BACK FOR ADDITIONAL
PRECAUTIONARY STATEMENTS**

63

59-175

EPA Est. 59-NC-1
EPA Reg. No. 59-175



**PRECAUTIONARY STATEMENTS
HAZARDS TO HUMANS & DOMESTIC ANIMALS
WARNING**

May be fatal if swallowed, inhaled or absorbed through skin. Do not breathe dust. Do not get in eyes, on skin, or on clothing. Wash hands thoroughly after handling product and before eating or smoking.

STATEMENT OF PRACTICAL TREATMENT

If Swallowed: Call a physician or Poison Control Center immediately. Drink 1 or 2 glasses of water and induce vomiting by touching back of throat with finger, or if available, by administering syrup of ipecac. Repeat until vomit fluid is clear. Do not induce vomiting or give anything by mouth to an unconscious person.

If Inhaled: Remove victim to fresh air and apply respiration if indicated.

If On Skin: Remove contaminated clothing and immediately wash skin thoroughly with soap and water.

If In Eyes: Immediately flush eyes thoroughly for at least 5 minutes with plenty of water. Get medical attention if irritation persists.

Note To Physician: Prolonged exposure will result in cholinesterase depression. ATROPINE IS ANTIDOTAL. 2-PAM is also antidotal and may be administered in conjunction with atropine.

ENVIRONMENTAL HAZARDS

This product is toxic to fish, birds and other wildlife. Keep out of lakes, streams or ponds. Do not contaminate water by cleaning of equipment or by disposal of wastes. Apply this product only as specified on this label.

DIRECTIONS FOR USE

It is a violation of Federal law to use this product in a manner inconsistent with its labeling. Important: Read the entire label carefully before using Dri-Kil Extra. Hold container at a distance from the area to be treated that will permit even distribution of the dust. 1 oz of Dri-Kil Extra equals approximately three level tablespoonsful.

Beef and Dairy Cattle: To Control Lice and Horn Flies. Apply not more than 2 oz Dri-Kil Extra dust per animal. Dust evenly into hair over the head, neck, shoulders, back and tailhead. Repeat as necessary. No interval is required between treatment and use of meat or milk for food.

Swine: To Control Lice. Apply not more than 1 oz of Dri-Kil Extra dust per animal as a uniform coat over the shoulders and back. Repeat as necessary but not more often than once every 10 days. No interval is required between treatment and use of meat as food.

Bedding: Apply 2 oz of Dri-Kil Extra dust evenly over each 30 square feet of fresh, dry bedding. Repeat as necessary but not more often than once every 10 days.

Note: In severe infestations, both individual animals and bedding may be treated as directed above.

Use Restrictions: For external insecticidal use on the above specified animals only. Do not contaminate feed, troughs, water or water utensils. Provide thorough ventilation while dusting. Do not apply to sick, stressed or convalescent animals.

STORAGE AND DISPOSAL

Do not contaminate water, food, or feed by storage or disposal.

Storage: Store in cool, dry place.

Pesticide Disposal: Pesticides wastes are acutely hazardous. Improper disposal of excess pesticide, spray mixture, or rinsate is a violation of Federal Law. If these wastes cannot be disposed of by use according to label instructions, contact your State Pesticide or Environmental Control Agency, or the Hazardous Waste representative at the nearest EPA Regional Office for guidance.

Container Disposal: Triple rinse (or equivalent). Then offer for recycling or reconditioning, or puncture and dispose of in a sanitary landfill, or incineration, or, if allowed by State and local authorities, by burning. If burned, stay out of smoke.

Wellcome Animal Health Division
Burroughs Wellcome Co.
Kansas City, MO 64116 U.S.A.

113097

Wellcome Animal Health Division
Burroughs Wellcome Co.
2000 South 11th St.
Kansas City, KS 66103



300/115199
18/5

Gentlemen:

Subject: General Label Revision per
PR Notice 83-4 Dri-Killer Extra
EPA Registration No. 59-175
Your Application Dated January 26, 1984

The amendment referred to above, submitted in connection with registration under FIFRA sec. 3(c)(7)(A) is acceptable provided that you:

1. Submit and/or cite all data required for registration/reregistration of your product under FIFRA sec. 3(c)(5) when the Agency requires all registrants of similar products to submit such data.
2. Make the labeling changes listed below before you release the product for shipment bearing the amended labeling:
 - a. The Agency has decided to classify 1% and less coumaphos dust formulations in Toxicity Category III, based upon a request for reconsideration of the available inhalation data submitted by the basic manufacturer, Rayvet. Therefore, revise the signal word to "CAUTION."
 - b. Revise "May be fatal" to "Harmful" on the hazards to humans section.
3. Submit five (5) copies of your final printed labeling before you release the product for shipment.

If these conditions are not complied with, the registration will be subject to cancellation in accordance with FIFRA sec. 6(e). Your release for shipment of the product bearing the amended labeling constitutes acceptance of these conditions.

A stamped copy of the label is enclosed for your records.

Sincerely yours,

George T. LaRocca
Product Manager (15)
Insecticide-Podenticide Branch
Registration Division (TS-767)

Enclosure

RD/IRB:PCR-05508;LaRocca:lje:Paven:557-2226;11-53:4/24/84:Del.5/6/84

OFFICIAL FILE COPY