

# K-Bomb

Contains KORLAN\*

## Wound and Screw Worm Spray

Kills Screw Worms, Blowfly Maggots on Cattle, Sheep and Horses

For Livestock of All Ages, Including Newborn Animals

### Active Ingredients

Ronnel [O,O-dimethyl O-(2,4,5-trichlorophenyl) phosphorothioate] (from technical grade)	2.5%
Xylene	0.5
Inert Ingredients	97.0
	<hr/> 100.0%

**CAUTION:** Keep out of reach of children.  
See additional cautions and warning on back panel.

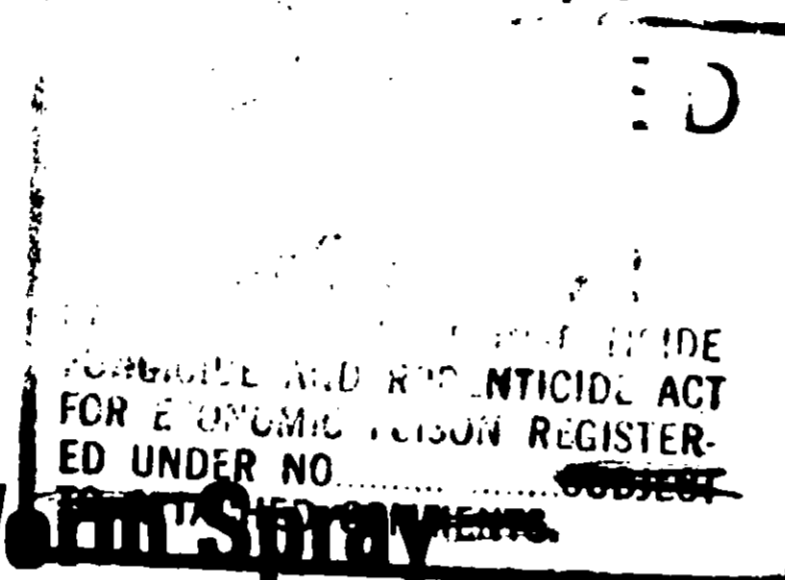
\*Trademark of The Dow Chemical Company

**Net Contents One Pound**      EPA Reg. No. 59-172



# COOPER

59-172



## K-Bomb

### Wound and Screw Worm Spray

#### DIRECTIONS FOR USE

##### To Operate

Hold outlet about 3 inches from wound or infested area. Be sure opening is directed toward area to be treated. Press valve down to spray, wetting wound and about 1 inch of surrounding area thoroughly.

##### Screw Worm and Blowfly Infestations

Use particular care to spray into deep pockets caused by screw worms. Re-treat if necessary.

##### To Prevent Screw Worm and Blowfly Infestations

Apply directly to all open or fresh wounds resulting from dehorning, castration, shear cuts, etc. Also treat navels of newborn animals. Freely bleeding wounds may require several applications. Re-treat as needed.

##### Fleece Worm Infestations

Spray infested areas liberally, working toward the center of infestation. Shearing or removing wool from the infested area is not necessary. Re-treat as needed.

#### CAUTION

Harmful if swallowed. Avoid breathing spray mist. Injurious to eyes; do not get in eyes. In case of contact with human eyes; flush eyes immediately with plenty of water and get prompt medical attention. Avoid skin contact. Wash hands thoroughly after using. Avoid contamination of feed and foodstuffs.

For external use only. Livestock Remedy—not for use on humans.

#### WARNING

Contents under pressure. Do not puncture. Do not use or store near heat or open flame. Exposure to temperatures above 130°F may cause bursting. Never throw container into fire or incinerator.

#### COOPER U.S.A., INC.

Chicago, Illinois 60614 USA

A Wellcome Company

PHI WLM WWF