

PRECAUTIONARY STATEMENTS

HAZARD TO HUMANS AND DOMESTIC ANIMALS

CAUTION: May be harmful if swallowed or absorbed through the skin. Keep away from humans, domestic animals and pets. Keep away from feed or foodstuffs.

FIRST AID

Have label, including 1-800-858-7378, with you when obtaining treatment advise.

If swallowed

- Call a Poison Control Center or doctor, immediately for medical treatment advice.
- Have person sip a glass of water if able to swallow.
- Do not induce vomiting unless told to do so by a Poison Control Center or doctor.

If on skin or clothing

- Take off contaminated clothing.
- Rinse skin immediately with plenty of water for 15 to 20 minutes.
- Call a poison control center, doctor immediately for treatment advice.

NOTE TO PHYSICIAN

This material may reduce the clotting ability of the blood and cause bleeding. If ingested, administer Vitamin K, intramuscularly or orally. Repeat as necessary based on monitoring of prothrombin times.

Call the National Pesticide Information Center (NPIC) For advise on pesticide medical emergencies, incidents & concerns. 1-80-858-7378.

ENVIRONMENTAL HAZARD

This product is toxic to fish and wildlife. Do not apply this product directly to water.

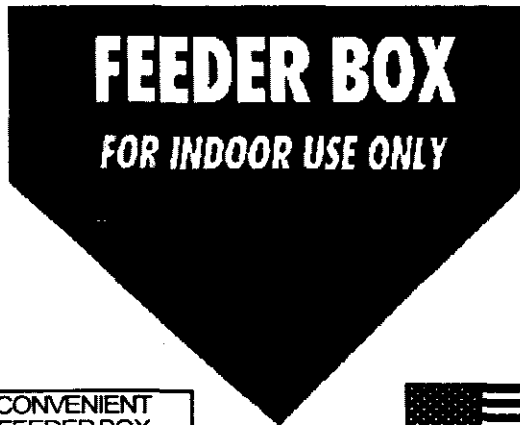
STORAGE AND DISPOSAL

STORAGE: Store only in original container, in a cool, dry, place inaccessible to children and pets.

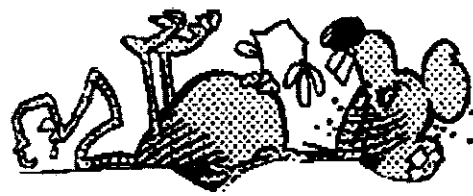
DISPOSAL: If empty: Do not reuse container. Place in trash or offer for recycling if available. If partly filled: Call your local waste agency or 1-800 CLEANUP for disposal instructions. Never place unused product down any indoor or outdoor drain.

JTEATON

ANSWER FOR MICE



CONVENIENT
FEEDER BOX
REMOVE TAB



EPA Reg. No. 56-56 EPA Est. No. 56-OH-1

KEEP OUT OF REACH OF CHILDREN CAUTION

See inside panels for additional precautionary Statements

ACTIVE INGREDIENT:

Chlorprophacinone CAS [36-91-8]	0.005%
OTHER INGREDIENTS:	99.995%
TOTAL	100.000%

Feeder Box Net Weight : 1.5 oz of Bait
Package Units. 18 oz., 36 oz.
Containing 1, 12, or 24 x 1.5 oz. Feeder Boxes.

Manufactured by
J. T. EATON & COMPANY, INC.
 1393 East Highland Road. Twinsburg. Ohio 44087 U.S.A.
 JT EATON® is a
 Registered Trademark of J.T. EATON & CO., INC.

DIRECTIONS FOR USE

It is a violation of Federal law to use this product in a manner inconsistent with its labeling

USE RESTRICTIONS

THIS IS NOT A TAMPER PROOF OR TAMPER RESISTANT BAIT STATION. DO NOT USE THIS PRODUCT IN AREAS ACCESSIBLE TO CHILDREN DOMESTIC ANIMALS, OR NONTARGET WILDLIFE. DO NOT USE THIS PRODUCT OUTDOORS. THIS PRODUCT MAY BE USED TO CONTROL HOUSE MICE (*Mus musculus*) in homes, industrial, commercial or agricultural buildings. Do not place feeder boxes where there is a possibility of contaminating food, water, or surfaces that come in direct contact with food, water of those surfaces.

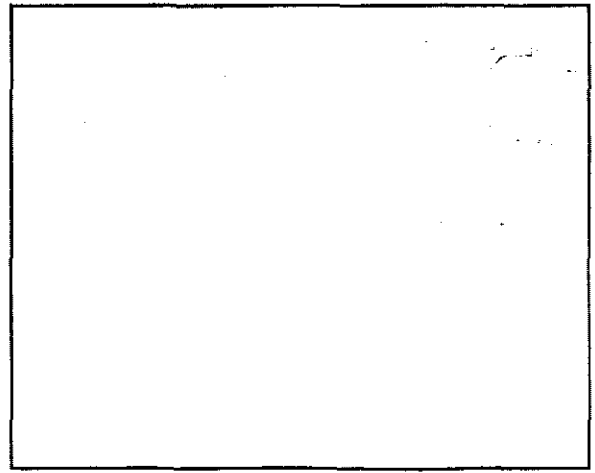
SELECTION OF TREATMENT AREAS

Determine areas where mice will most likely find and consume the bait. Generally, these are along walls, by gnawer openings, in or beside burrows, in corners and concealed places.

APPLICATION DIRECTIONS:

Place single feeder boxes at intervals of 8 to 12 feet along walls or in corners where mice or signs of mice have been seen. Replace feeder boxes if their contents have been consumed or contaminated, or if the units are severely damaged. Units not touched after three days should be moved to new locations where mouse activity is evident and units can be placed without violating the requirements of this label. Collect and dispose of all dead animals and leftover bait properly. To prevent reinfestation, limit sources of rodent food, water, and harborage as much as possible. If reinfestation does occur, repeat treatment.

NOTICE: Buyer assumes all risks of use, storage or handling of this material not in strict accordance with directions For Use and Precautionary Statements given herewith.



56-56

02/19/2004

Page 4 of 4

1/1