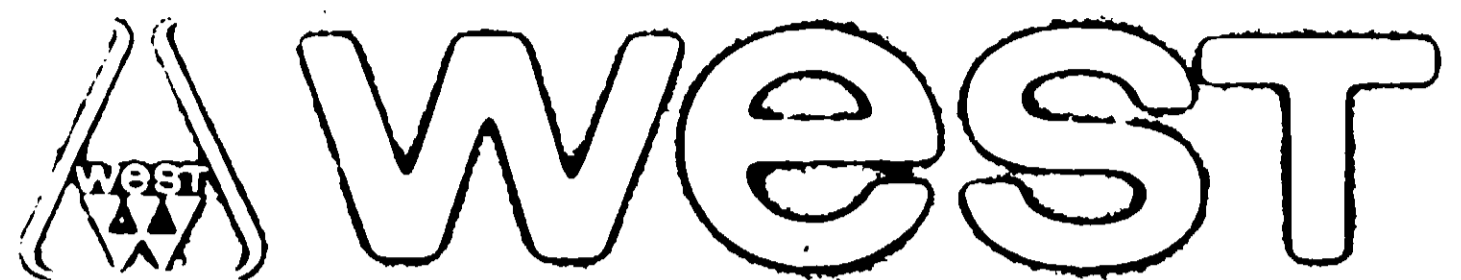


5108



ACCEPTED

MAY 2 1973

UNDER THE FEDERAL INSECTICIDE  
FUNGICIDE AND RODENTICIDE ACT  
FOR ECONOMIC POISON REGISTER-  
ED UNDER NO. 52-115 SUBJECT  
TO ATTACHED COMMENTS.

52-115

"tamed iodine"®

Dyne®

NON-FOAMING PIPELINE DETERGENT-GERMICIDE FOR DAIRY C.I.P.

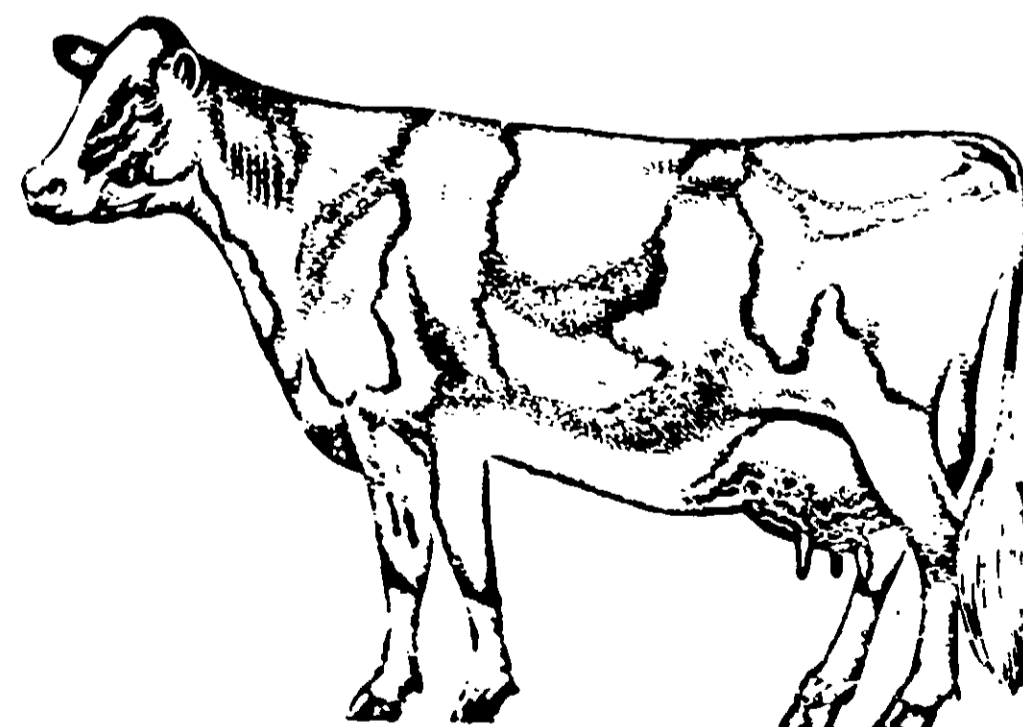
ACTIVE INGREDIENTS:

Phosphoric Acid .....	40.00%
Isopropyl Alcohol .....	20.00%
Sodium N-Cyclohexyl-N-Palmitoyl Taurate-Iodine Complex .....	5.65%
Sodium Dodecyl Benzene Sulfonate Iodine Complex .....	0.62%
(Providing 1.6% titratable iodine)	

INERT INGREDIENTS: .....	33.73%
	100.00%

U.S. Patent Nos. 3,525,696 • 3,039,916 • 2,977,315

EPA Reg. No. 52-115-AA.



**DANGER:**

Keep Out Of Reach  
Of Children.

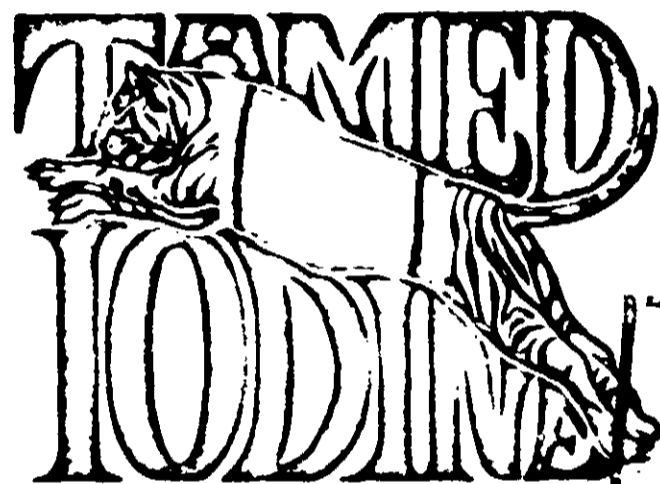
(See back panel for  
Antidote Statement  
and other precautions)

Net Contents:  
1 Gallon U.S.

TAKE TIME



OBSERVE LABEL DIRECTIONS



"Dyne", and "Dynamate" and "Tamed Iodine" are trademarks of West Chemical Products, Inc.

52-115

Manufactured By

west



agro-chemical, inc.

A SUBSIDIARY OF WEST CHEMICAL PRODUCTS, INC. New York, N.Y. 11101

4-0108- 112-1

## DIRECTIONS FOR USE

- 1. PRE-RINSE.** Immediately after milking, thoroughly rinse the entire pipeline system with sufficient 110 F. water. Permit water to discharge to drain. Do not re-circulate rinse water. In particularly hard water areas, it is advisable to slightly acidify the rinse water by using one (1) ounce of DYNE to twenty (20) gallons of water.
- 2. CLEAN.** For most satisfactory results, we recommend the use of Dynamate®. Consult label for proper cleaning use directions.
- 3. RINSE.** Following cleaning cycle, rinse line thoroughly with lukewarm water. In hard water areas, add one (1) ounce of DYNE to twenty (20) gallons of water.
- 4. SANITIZE.** Immediately before milking, sanitize with one (1) ounce of DYNE to ten (10) gallons of lukewarm water, permitting two (2) minutes contact time. (This provides 12½ ppm titratable iodine.) For spray applications use one (1) ounce of DYNE to five (5) gallons of water. (This provides 25 ppm titratable iodine). Rinse with potable water and drain, if required by state or local regulations. Follow all state and local health department regulations.

DYNE is its own indicator of germicidal activity. The amber color at use dilution shows the presence of the active ingredient—iodine.

Not adversely affected by common types of water hardness or by cold water.

## DANGER:

**CORROSIVE. CAUSES EYE DAMAGE AND SKIN IRRITATION.** Do not get in eyes, on skin or on clothing. Wear goggles or face shield and rubber gloves when handling. Harmful or fatal if swallowed. Avoid contamination of food.

**FIRST AID:** In case of contact, immediately flush eyes or skin with plenty of water for at least 15 minutes. For eyes, call physician. Remove and wash contaminated clothing before reuse.

If swallowed, drink *promptly* a large quantity of milk, egg whites, gelatin solution or if these are not available, drink large quantities of water. Avoid alcohol. Call a physician immediately.

**NOTE TO PHYSICIAN:** Probable mucosal damage may contraindicate the use of gastric lavage. Measures against circulatory shock, respiratory depression and convulsion may be needed.

**INFLAMMABLE:** Do not use, pour, spill or store near heat or open flame.

Rinse empty container thoroughly with water and discard it.

MADE IN U.S.A.