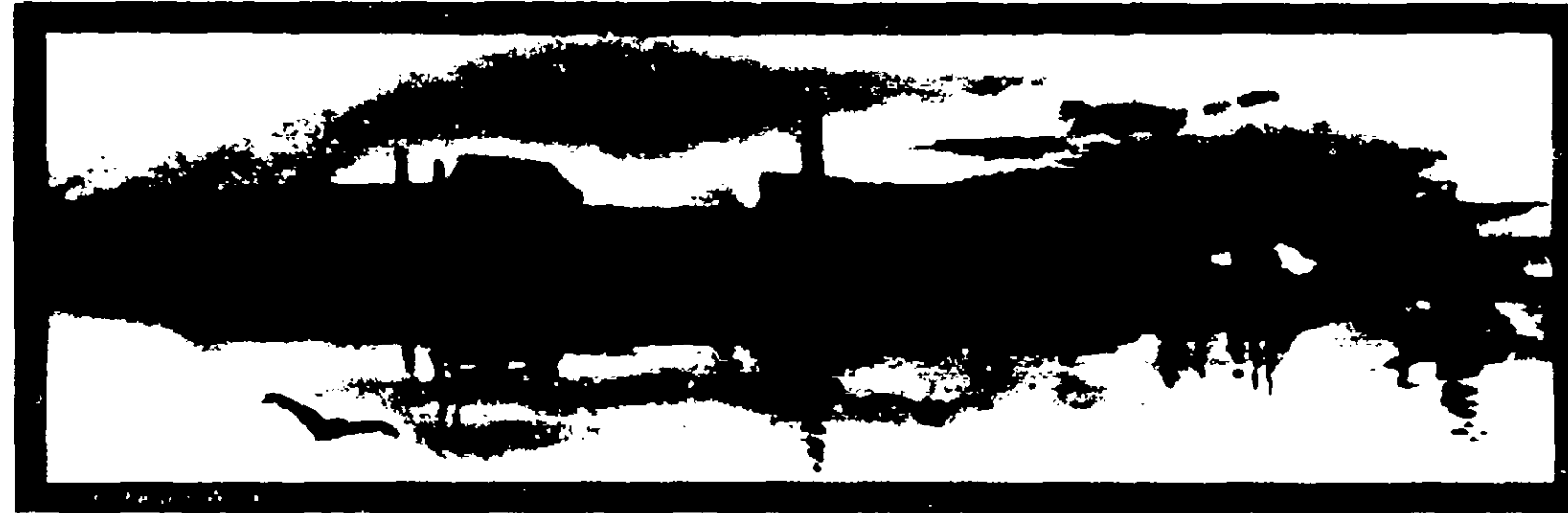


Oct. 15, 1974

43-5

EPA Est 43-MA-1

EPA Reg. No. 43-5



Cabot's Creosote Stains

For use on wood shingles, siding and clapboards
Wood Preserving

0238 BUNGALOW BROWN

4 LITERS — 1.057 U. S. GALLONS

**WARNING — KEEP OUT OF THE REACH OF CHILDREN
SEE SIDE PANEL FOR FURTHER WARNING STATEMENTS.**

ACTIVE INGREDIENT

Water-Gas Creosote Oil

Not under

65 %

INERT INGREDIENTS

Not over

35 %

100 %

WARNING

Keep away from heat and open flame. Do not get on skin. Do not breathe vapor or spray mist. Do not get in eyes or on clothing. Close container after each use. Harmful or fatal if swallowed. Do not induce vomiting. Call physician immediately. Before smoking or eating and after using, clean hands thoroughly. Do not use this product indoors, or any other confined areas, where the vapors may concentrate and cause injury to plant or animal life. Vapors will cause injury if adequate ventilation is not insured.

This product is toxic to fish and wildlife. Keep out of lakes, streams or ponds. Do not contaminate water by cleaning of equipment or disposal of waste and container. Do not reuse container. Destroy when empty. Apply this product only as specified on this label.

Samuel Cabot

Incorporated

MANUFACTURING CHEMISTS SINCE 1877
BOSTON, MASSACHUSETTS 02108

CABOT'S CREOSOTE STAINS dye the wood, penetrating deep into the surface, producing rich lively colors that enhance the beauty of the grain. Meanwhile, their high Creosote content (over 60% of a carefully refined Creosote oil) prevents wood rot and decay causing fungi.

For use on wooden roof and wall shingles, clapboards, siding, trim and all other exterior woodwork. Will not crack, peel or blister — surface needs no priming, sanding or scraping. Available in 24 distinctive shades. These Creosote Stains should not be used on any previously painted, treated or sealed surfaces.

DIRECTIONS

1. Surface must be clean and dry. Stir stains thoroughly before applying, and stir them occasionally while applying, to maintain a uniform solution. Do not thin stains. If the job requires more than one can of Stain, mix all together in one container and stir till color is uniform.
2. Apply with a broad flat brush, spray machine or dip shingles before laying. Two coats are recommended for best appearance and durability. When staining vertical siding begin at the top with several boards and go all the way to the bottom. On horizontal siding begin at one edge and follow thru to a break at a door, window or corner.
3. **DIPPING** — dip the shingles in and out rapidly; allow two-thirds of the shingles to be immersed; then throw them in a loose pile and allow them to dry. When dry, brush off excess stain. Wear protective clothing and rubber gloves when handling the freshly treated lumber.

NOTE: Do not stain when the temperature is below 40°. Since these are stain finishes, the colors may be affected by the color and porosity of the surface to which they are applied.

PAINT OVER STAINS: Any of Cabot's Creosote Stains can be painted over after two years exposure except #0280 and #0281.

DRYING TIME: For shingles and rough wood surfaces, allow 24 hours between coats. For clapboards and smooth siding, allow 3-5 days between coats if possible.

COVERING CAPACITY: On shingles or rough wood, about 100 square feet per gallon, two coats. On clapboards and smooth wood, 200 to 250 square feet per gallon, two coats. Hand dipping and one brush coat; 2½ to 3½ gallons of stain per square of 16" or 18" shingles.

SELLER MAKES NO WARRANTY, EXPRESSED OR IMPLIED, CONCERNING THE USE OF THIS PRODUCT OTHER THAN INDICATED ON THE LABEL. BUYER ASSUMES ALL RISK OF USE AND/OR HANDLING OF THIS MATERIAL WHEN SUCH USE AND/OR HANDLING IS CONTRARY TO LABEL INSTRUCTIONS.

LITHO IN U.S.A. D.N. CORP.