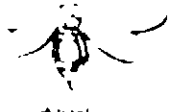


THIODAN

VEGETABLE & ORNAMENTAL DUST



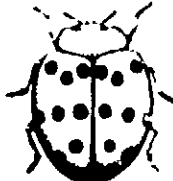
Colorado Potato Beetle



Whitefly



Aphid



Mexican Bean Beetle



Flea Beetle



Cucumber Beetle

PRECAUTIONARY STATEMENTS HAZARDS TO HUMANS & DOMESTIC ANIMALS

CAUTION

STATEMENT OF PRACTICAL TREATMENT

If swallowed: Do not induce vomiting. If conscious, give 1-2 glasses of water. If unconscious, give water by mouth. If breathing is difficult, give oxygen. If breathing has stopped, give artificial respiration. If necessary, give 1-2 glasses of water. If necessary, give 1-2 glasses of water.

If on skin: Wash with soap and water. If on face, wash with soap and water. If on face, wash with soap and water. If on face, wash with soap and water.

If in eyes: Flush eyes with water for at least 15 minutes. Get medical attention immediately.

NOTE TO PHYSICIAN: This is a mild insecticide. It is not a systemic insecticide. It is not a contact insecticide. It is not a stomach insecticide. It is not a fumigant insecticide. It is not a repellent insecticide. It is not a growth regulator insecticide. It is not a hormone insecticide. It is not a sex attractant insecticide. It is not a sex repellent insecticide. It is not a sex attractant insecticide. It is not a sex repellent insecticide.

ENVIRONMENTAL HAZARDS

This insecticide is highly toxic to fish and aquatic life. It is also highly toxic to birds and mammals. It is also highly toxic to bees and other beneficial insects. It is also highly toxic to plants and animals. It is also highly toxic to humans and domestic animals.

PROTECT BEES: Do not apply this insecticide to flowering plants. Do not apply this insecticide to flowering plants. Do not apply this insecticide to flowering plants.

STORAGE AND DISPOSAL

STORAGE: Store in a cool, dry place. Do not store in a hot, humid place. Do not store in a hot, humid place.

DISPOSAL: Do not dispose of this insecticide in the trash. Do not dispose of this insecticide in the trash. Do not dispose of this insecticide in the trash.

DIRECTIONS FOR USE

Apply 1/2 to 1 lb. per 1000 sq. ft. of area. Apply 1/2 to 1 lb. per 1000 sq. ft. of area. Apply 1/2 to 1 lb. per 1000 sq. ft. of area.

Apples (30): Apply 1/2 to 1 lb. per 1000 sq. ft. of area. Apply 1/2 to 1 lb. per 1000 sq. ft. of area. Apply 1/2 to 1 lb. per 1000 sq. ft. of area.

Apricots (1): Apply 1/2 to 1 lb. per 1000 sq. ft. of area. Apply 1/2 to 1 lb. per 1000 sq. ft. of area. Apply 1/2 to 1 lb. per 1000 sq. ft. of area.

Beans (1): Apply 1/2 to 1 lb. per 1000 sq. ft. of area. Apply 1/2 to 1 lb. per 1000 sq. ft. of area. Apply 1/2 to 1 lb. per 1000 sq. ft. of area.

Broccoli (7): Apply 1/2 to 1 lb. per 1000 sq. ft. of area. Apply 1/2 to 1 lb. per 1000 sq. ft. of area. Apply 1/2 to 1 lb. per 1000 sq. ft. of area.

Cucumbers (1): Apply 1/2 to 1 lb. per 1000 sq. ft. of area. Apply 1/2 to 1 lb. per 1000 sq. ft. of area. Apply 1/2 to 1 lb. per 1000 sq. ft. of area.

Corn (1): Apply 1/2 to 1 lb. per 1000 sq. ft. of area. Apply 1/2 to 1 lb. per 1000 sq. ft. of area. Apply 1/2 to 1 lb. per 1000 sq. ft. of area.

Corn (2): Apply 1/2 to 1 lb. per 1000 sq. ft. of area. Apply 1/2 to 1 lb. per 1000 sq. ft. of area. Apply 1/2 to 1 lb. per 1000 sq. ft. of area.

Cucumbers (1): Apply 1/2 to 1 lb. per 1000 sq. ft. of area. Apply 1/2 to 1 lb. per 1000 sq. ft. of area. Apply 1/2 to 1 lb. per 1000 sq. ft. of area.

Eggplants (1): Apply 1/2 to 1 lb. per 1000 sq. ft. of area. Apply 1/2 to 1 lb. per 1000 sq. ft. of area. Apply 1/2 to 1 lb. per 1000 sq. ft. of area.

Fleas (1): Apply 1/2 to 1 lb. per 1000 sq. ft. of area. Apply 1/2 to 1 lb. per 1000 sq. ft. of area. Apply 1/2 to 1 lb. per 1000 sq. ft. of area.

Grapes (7): Apply 1/2 to 1 lb. per 1000 sq. ft. of area. Apply 1/2 to 1 lb. per 1000 sq. ft. of area. Apply 1/2 to 1 lb. per 1000 sq. ft. of area.

Kale (2): Apply 1/2 to 1 lb. per 1000 sq. ft. of area. Apply 1/2 to 1 lb. per 1000 sq. ft. of area. Apply 1/2 to 1 lb. per 1000 sq. ft. of area.

Lettuce (1): Apply 1/2 to 1 lb. per 1000 sq. ft. of area. Apply 1/2 to 1 lb. per 1000 sq. ft. of area. Apply 1/2 to 1 lb. per 1000 sq. ft. of area.

Mustard Greens (7): Apply 1/2 to 1 lb. per 1000 sq. ft. of area. Apply 1/2 to 1 lb. per 1000 sq. ft. of area. Apply 1/2 to 1 lb. per 1000 sq. ft. of area.

Ornamentals (1): Apply 1/2 to 1 lb. per 1000 sq. ft. of area. Apply 1/2 to 1 lb. per 1000 sq. ft. of area. Apply 1/2 to 1 lb. per 1000 sq. ft. of area.

Peppers (1): Apply 1/2 to 1 lb. per 1000 sq. ft. of area. Apply 1/2 to 1 lb. per 1000 sq. ft. of area. Apply 1/2 to 1 lb. per 1000 sq. ft. of area.

Potatoes (1): Apply 1/2 to 1 lb. per 1000 sq. ft. of area. Apply 1/2 to 1 lb. per 1000 sq. ft. of area. Apply 1/2 to 1 lb. per 1000 sq. ft. of area.

Pumpkins (1): Apply 1/2 to 1 lb. per 1000 sq. ft. of area. Apply 1/2 to 1 lb. per 1000 sq. ft. of area. Apply 1/2 to 1 lb. per 1000 sq. ft. of area.

Squash (1): Apply 1/2 to 1 lb. per 1000 sq. ft. of area. Apply 1/2 to 1 lb. per 1000 sq. ft. of area. Apply 1/2 to 1 lb. per 1000 sq. ft. of area.

Strawberry (4): Apply 1/2 to 1 lb. per 1000 sq. ft. of area. Apply 1/2 to 1 lb. per 1000 sq. ft. of area. Apply 1/2 to 1 lb. per 1000 sq. ft. of area.

Sweet Corn (1): Apply 1/2 to 1 lb. per 1000 sq. ft. of area. Apply 1/2 to 1 lb. per 1000 sq. ft. of area. Apply 1/2 to 1 lb. per 1000 sq. ft. of area.

EPA REG NO 16-133

EPA EST 16 VA 1

MANUFACTURED BY
DRAGON CHEMICAL CORPORATION
Roanoke, Virginia 24019

ACCEPTED
16-133

3%
17%
10%