

NET WEIGHT

4 POUNDS



# TOMATO & VEGETABLE DUST

# TOMATO

and  
VEGETABLE DUST



CONTROLS: CERTAIN INSECTS AND FUNGUS DISEASES  
ATTACKING VEGETABLES, FRUITS AND ORNAMENTALS.

USDA REG. NO. 16-89

RECEIVED  
Jan 27, 1971  
16-89

## CAUTION

HARMFUL IF INHALED OR SWALLOWED. DO NOT breathe dust. DO NOT take internally. Skin contact may be harmful. Wash hands before eating. Take shower or bath after work. PHYSICIAN: Carbaryl is a moderate, reversible cholinesterase inhibitor. Atropine is antidotal. KEEP OUT OF REACH OF CHILDREN AND ANIMALS. DO NOT store near feed or foodstuff.

For protection of honey bees avoid use, if possible, during periods when honey bees are visiting the crop. When necessary to use during such periods, warn beekeepers well in advance to locate hives at a safe distance until 1 week after application.

## NOTICE

Buyer assumes all risks of use, storage or handling of this material in strict accordance with DIRECTIONS AND CAUTIONS stated on this label.

READ ENTIRE LABEL. USE STRICTLY IN ACCORDANCE WITH LABEL CAUTIONS, WARNINGS AND DIRECTIONS, AND IN CONFORMITY WITH FEDERAL AND STATE REGULATIONS.

### DIRECTIONS FOR USE

**Tomato & Vegetable Dust** is a contact insecticide and fungicide for the control of both insects and fungus diseases. Begin treatments early in the season before any damage from pests or diseases occurs and repeat treatments as needed depending on the severity of conditions to be controlled. It is effective against fungus diseases and is applied to the entire plant.

Apply with a backpack sprayer or dust blower at a rate of 1.0 to 1.5 lb. per acre. For broadcast application use 1.0 to 1.5 lb. per acre. For spot application use 1.0 to 1.5 lb. per acre. For use in greenhouses use 1.0 to 1.5 lb. per acre.

**BEANS** - Apply to the leaves of the plants. Do not apply to the soil. Do not apply to the soil. Do not apply to the soil. Do not apply to the soil.

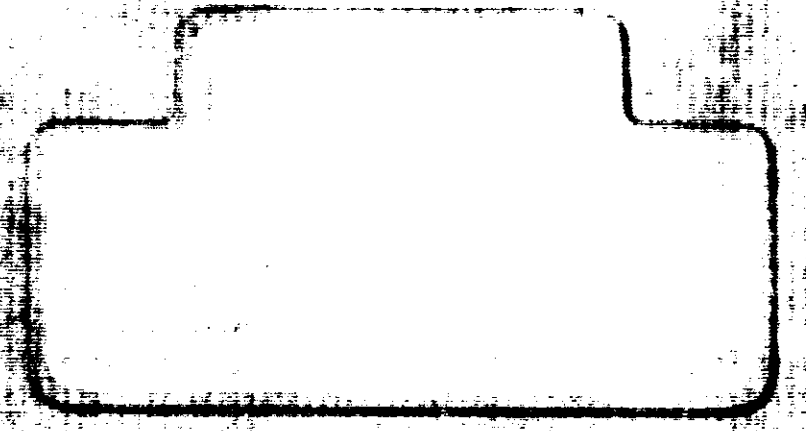
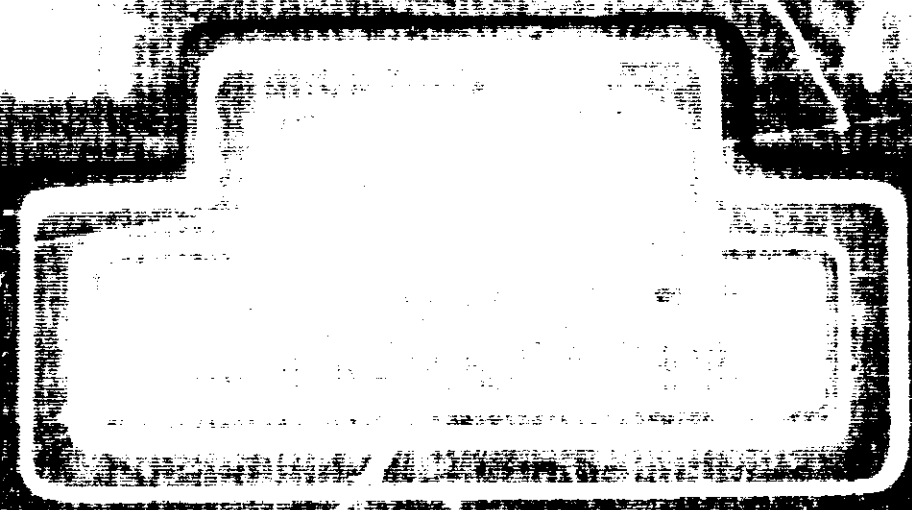
**LETTUCE** - Apply to the leaves of the plants. Do not apply to the soil. Do not apply to the soil. Do not apply to the soil.

**CORN** - Apply to the leaves of the plants. Do not apply to the soil. Do not apply to the soil. Do not apply to the soil.

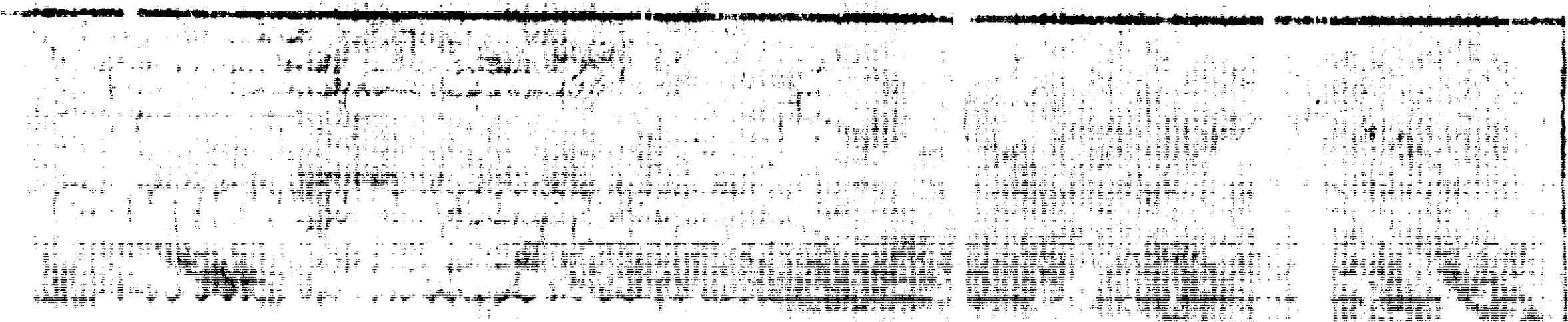
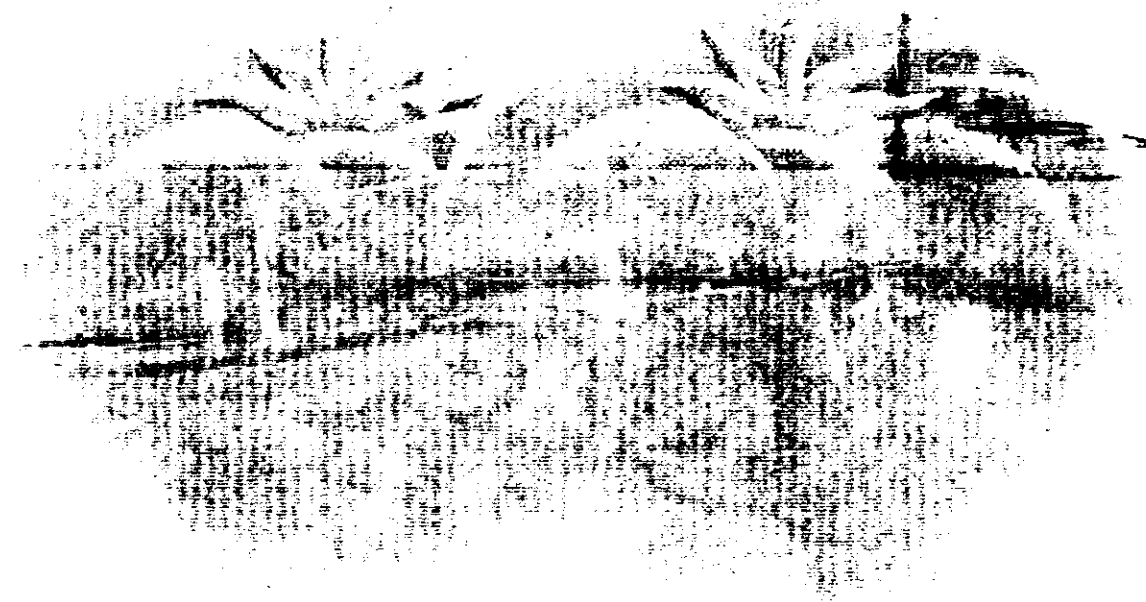
**TOMATOES** - Apply to the leaves of the plants. Do not apply to the soil. Do not apply to the soil. Do not apply to the soil.

**PEPPERS** - Apply to the leaves of the plants. Do not apply to the soil. Do not apply to the soil. Do not apply to the soil.

**CUCUMBERS** - Apply to the leaves of the plants. Do not apply to the soil. Do not apply to the soil. Do not apply to the soil.



MONA



ND



## TOMATO & VEGETABLE DUST



**READ ENTIRE LABEL. USE STRICTLY IN ACCORDANCE WITH LABEL CAUTIONS, WARNINGS AND DIRECTIONS; AND IN CONFORMITY WITH FEDERAL AND STATE REGULATIONS.**

### DIRECTIONS FOR USE

Dragon Tomato and Vegetable Dust is a combination of 1% Sevin and 5% Zineb to give in one application control of both insects and Fungus Diseases. Begin treatments when the plants are small before any damage from pests or diseases occur and repeat at 5 to 10 day intervals depending on the severity of conditions favoring insect attack and development of fungus diseases. Apply dust to the entire plant.

For the following crops and plants use approximately 1/4 to 1/2 lb. (1000 sq. ft.) when the plants are small and increase as noted to provide adequate coverage as plants increase in size.

**BEANS**—Mexican Bean Beetle, Leafhopper, Flea Beetle—Downy Mildew, Rust, Anthracnose. DO NOT use more than approximately 1 lb./1000 sq. ft. DO NOT apply within 7 days of harvest. DO NOT feed treated vines to dairy or meat animals.

**LETTUCE**—Lygus and Stink Bugs—Downy Mildew. DO NOT use more than 9/10 lb./1000 sq. ft. DO NOT apply to head lettuce within 5 days of harvest or within 14 days to other varieties.

**CORN**—Corn Earworm, European Corn Borer—Heliothis, thospoium, Leaf Blights. For control of corn earworm, apply approximately 1/4 lb./1000 sq. ft. Make 3-4 applications at 2 to 3 day intervals beginning when the silks first appear. For control of European Corn Borer, apply approximately 1/4 lb./1000 sq. ft. Make application into the whorls and to the entire plant. DO NOT feed forage to dairy animals or animals being finished for slaughter. Application of this product to the tassel region of corn during the pollen shed period will seriously reduce bee populations. DO NOT use more than 9/10 lb./1000 sq. ft.

**TOMATOES**—Colorado Potato Beetle, Leafhopper, Flea Beetle, Tomato Fruitworm, Fall Armyworm, Tomato Hornworm, European Corn Borer, Stink Bug, Early and Late Blight, Anthracnose, Stemphylium and Septoria Leaf Spots. DO NOT use more than 9/10 lb./1000 sq. ft.

**EGGPLANT and PEPPERS**—For same insects as listed under Tomatoes above. DO NOT use more than approximately 1 1/2 lbs./1000 sq. ft. (except 1 lb./1000 sq. ft. on eggplant).

**CUCUMBERS, SUMMER SQUASH**—Peachworm, Melonworm, Cucumber Beetle, Squash Bug, Flea Beetle, Downy Mildew. DO NOT use more than 1 lb./1000 sq. ft.

ACCEPTED  
7.14.71  
6-89

### CAUTION

**HARMFUL IF INHALED OR SWALLOWED. DO NOT breathe dust. DO NOT take internally. Skin contact may be harmful. Wash hands before eating. Take shower or bath after work. PHYSICIAN: Carbaryl is a moderate, reversible cholinesterase inhibitor. Atropine is antidotal. KEEP OUT OF REACH OF CHILDREN AND ANIMALS. DO NOT store near feed or foodstuffs.**

For protection of honey bees avoid use, if possible, during periods when honey bees are visiting the crop. When necessary to use during such periods, warn beekeepers well in advance to locate hives at a safe distance until 1 week after application.

### NOTICE

Buyer assumes all risks of use, storage or handling of this material not in strict accordance with DIRECTIONS AND CAUTIONS stated on this label.

### CAUTION

**HARMFUL IF INHALED OR SWALLOWED. DO NOT breathe dust. DO NOT take internally. Skin contact may be harmful. Wash hands before eating. Take shower or bath after work. PHYSICIAN: Carbaryl is a moderate, reversible cholinesterase inhibitor. Atropine is antidotal. KEEP OUT OF REACH OF CHILDREN AND ANIMALS. DO NOT store near feed or foodstuffs.**

For protection of honey bees avoid use, if possible, during periods when honey bees are visiting the crop. When necessary to use during such periods, warn beekeepers well in advance to locate hives at a safe distance until 1 week after application.

### NOTICE

Buyer assumes all risks of use, storage or handling of this material not in strict accordance with DIRECTIONS AND CAUTIONS stated on this label.



NET WEIGHT

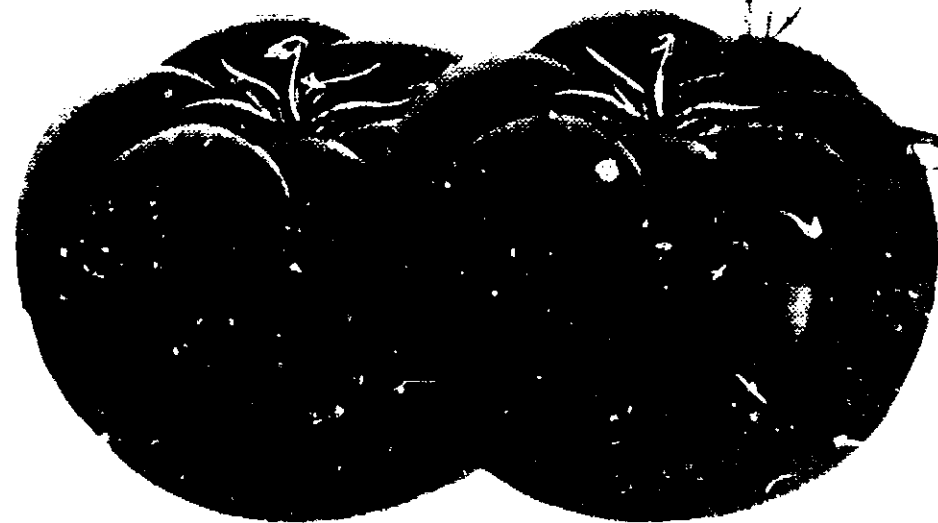
4 POUNDS



# TOMATO & VEGETABLE DUST

# TOMATO

and  
VEGETABLE DUST



ACCEPTED  
Jan 27, 1971  
1689

### CAUTION

HARMFUL IF INHALED OR SWALLOWED. DO NOT breathe dust. DO NOT take internally. Skin contact may be harmful. Wash hands before eating. Take shower or bath after work. PHYSICIAN: Carbaryl is a moderate, reversible cholinesterase inhibitor. Atropine is antidotal. KEEP OUT OF REACH OF CHILDREN AND ANIMALS. DO NOT store near feed or foodstuff.

For protection of honey bees avoid use, if possible, during periods when honey bees are visiting the crop. When necessary to use during such periods, warn beekeepers well in advance to locate hives at a safe distance until 1 week after application.

### NOTICE

Buyer assumes all risks of use, storage or handling of this material in strict accordance with DIRECTIONS AND CAUTIONS stated on this label.

CONTROLS: CERTAIN INSECTS AND FUNGUS DISEASES  
ATTACKING VEGETABLES, FRUITS AND ORNAMENTALS.

USDA REG. NO. 16-89

#### ACTIVE INGREDIENTS

Carbaryl (1 naphthyl N methylcarbamate)  
Zineb (Zinc ethylene bisdithiocarbamate)

#### INERT INGREDIENTS

BY WT.  
5%  
5%  
90%  
Total 100%

**CAUTION:** KEEP OUT OF REACH OF CHILDREN. See additional cautions on back and side panels.

MANUFACTURED BY  
**DRAGON CHEMICAL CORPORATION**  
ROANOKE, VIRGINIA 24019

READ ENTIRE LABEL. USE STRICTLY IN ACCORDANCE WITH LABEL CAUTIONS, WARNINGS AND DIRECTIONS, AND IN CONFORMITY WITH FEDERAL AND STATE REGULATIONS.

#### DIRECTIONS FOR USE

Dragon Tomato & Vegetable Dust is a contact insecticide and fungicide. It kills insects and fungi on contact. It is effective against a wide range of insects and fungi. It is used on tomatoes and other vegetables. It is applied as a dust to the foliage and fruit of the plants. It is effective against a wide range of insects and fungi. It is used on tomatoes and other vegetables. It is applied as a dust to the foliage and fruit of the plants.

**BEANS**—Mexican bean beetle, Colorado potato beetle, European cornborer, etc. Apply to foliage and fruit of the plants. It is effective against a wide range of insects and fungi. It is used on tomatoes and other vegetables. It is applied as a dust to the foliage and fruit of the plants.

**LETTUCE**—Lettuce miner, etc. Apply to foliage and fruit of the plants. It is effective against a wide range of insects and fungi. It is used on tomatoes and other vegetables. It is applied as a dust to the foliage and fruit of the plants.

**CORN**—European cornborer, etc. Apply to foliage and fruit of the plants. It is effective against a wide range of insects and fungi. It is used on tomatoes and other vegetables. It is applied as a dust to the foliage and fruit of the plants.

**TOMATOES**—Tomato pinworm, etc. Apply to foliage and fruit of the plants. It is effective against a wide range of insects and fungi. It is used on tomatoes and other vegetables. It is applied as a dust to the foliage and fruit of the plants.

**EGGPLANT AND PEPPERS**—Eggplant and pepper weevil, etc. Apply to foliage and fruit of the plants. It is effective against a wide range of insects and fungi. It is used on tomatoes and other vegetables. It is applied as a dust to the foliage and fruit of the plants.

**CUCUMBERS, MELONS, etc.**—Apply to foliage and fruit of the plants. It is effective against a wide range of insects and fungi. It is used on tomatoes and other vegetables. It is applied as a dust to the foliage and fruit of the plants.

**GRAPES**—Grape phylloxera, etc. Apply to foliage and fruit of the plants. It is effective against a wide range of insects and fungi. It is used on tomatoes and other vegetables. It is applied as a dust to the foliage and fruit of the plants.

**STRAWBERRIES**—Strawberry weevil, etc. Apply to foliage and fruit of the plants. It is effective against a wide range of insects and fungi. It is used on tomatoes and other vegetables. It is applied as a dust to the foliage and fruit of the plants.

**ROSES, AZALEAS, SHRUBS, TREES, etc.**—Apply to foliage and fruit of the plants. It is effective against a wide range of insects and fungi. It is used on tomatoes and other vegetables. It is applied as a dust to the foliage and fruit of the plants.

**AZALEAS AND CAMELLIAS**—Apply to foliage and fruit of the plants. It is effective against a wide range of insects and fungi. It is used on tomatoes and other vegetables. It is applied as a dust to the foliage and fruit of the plants.

HARMFUL IF INHALED OR SWALLOWED. DO NOT breathe dust. DO NOT take internally. Skin contact may be harmful. Wash hands before eating. Take shower or bath after work. PHYSICIAN: Carbaryl is a moderate, reversible cholinesterase inhibitor. Atropine is antidotal. KEEP OUT OF REACH OF CHILDREN AND ANIMALS. DO NOT store near feed or foodstuff.

Buyer assumes all risks of use, storage or handling of this material in strict accordance with DIRECTIONS AND CAUTIONS stated on this label.

Contains 5% Carbaryl

Trade Mark of UCC