



000016-00027-060299

Printed: 10:48:51 Friday, 25 Jun, 1999 # 26 / 3477

Systems Integration Group, Inc.



UNITED STATES ENVIRONMENTAL PROTECTION AGENCY  
WASHINGTON, D.C. 20460

Charles S. Rose  
Authorized Agent for Dragon Chemical Corp.  
9701 Fields Road, No. 2400  
Gaithersburg, MD 20878

OFFICE OF  
PREVENTION, PESTICIDES AND  
TOXIC SUBSTANCES

JUN 2 1999

Subject: Dragon 5% Sevin Dust  
EPA Registration No. 16-27  
Amendment dated 18 May 1999 to change name of product to  
Dragon Easy Garden 5% Dust.

Dear Mr. Rose:

The labeling referred to above, submitted in connection with registration under the Federal Insecticide, Fungicide, and Rodenticide Act, as amended, is acceptable provided that you make the labeling changes indicated below before you release the product for shipment bearing the amended labeling:

1. In the "Directions For Use" heading you must add the sentence "For plants above chest height, consider using Dragon Sevin Liquid" immediately after the statement "Allow dust to settle in treated areas before reentering". This statement was on the previous labeling, approved on 27 Feb 1997 and must be added on this label too.

2. Under the heading "Directions For Use" you must remove the statement "Dragon Easy Garden 5% Dust may be applied up to harvest except where noted". None of the preharvest intervals (PHIs) for any of the listed crops are for carbaryl products to be applied up to the day of harvest.

3. The PHIs for the crops listed on the label must be corrected as follows:

Beans- the PHI is 3 days for fresh beans and 21 days for dried beans.

Corn-(sweet corn)-do not apply within 2 days of harvest of ears, within 14 days of harvest or grazing of forage, or within 48 days of harvest of fodder.

Lettuce- leaf and head lettuce both have a 14 day PHI.

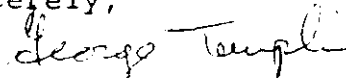
Potatoes- have a 7 day PHI.

Tomatoes, Eggplant, Peppers, Cucumbers, and Summer Squash- have a 3 day PHI.

Grapes and Strawberries- have a 7 day PHI.

Submit two copies of your final printed labeling before you release the product for shipment. A copy of the labeling is enclosed for your records.

Sincerely,



George Tompkins, Ph.D., Entomologist  
Insecticide/Rodenticide Branch  
Registration Division (7505C)

ACCEPTED  
with COMMENT  
In EPA Label E

JUN 2 1999

Under the Federal Insecticide,  
Fungicide, and Rodenticide Act,  
as amended, for the pesticide  
registered under EPA Reg. No.  
16-27

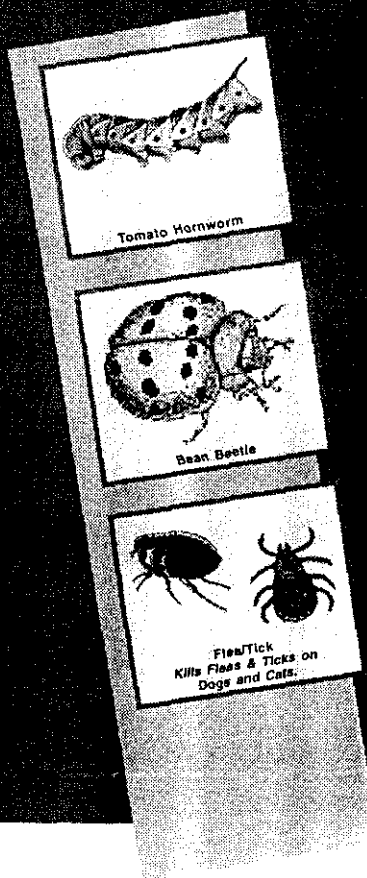
To use as a dust applicator: Do not cut bag where indicated. Punch holes in the top of the bag with a nail just above the zipper.  
Open zipper by pulling it apart from the sides. To Reseal After Use: Press where indicated.

CUT HERE

PRESS HERE TO RESEAL



# EASY GARDEN™ 5% DUST



*Controls Listed  
Insects Attacking  
Vegetables, Grapes,  
Ornamentals And Shrubs.*

ACTIVE INGREDIENT:  
Carbaryl (1-naphthyl N-methylcarbamate).....5%  
INERT INGREDIENTS: .....95%  
TOTAL .....100%

Keep Out of Reach of Children  
**CAUTION** See back panels  
for additional precautions.  
**NET WEIGHT 4 LB**

READ ENTIRE LABEL. USE STRICTLY IN ACCORDANCE WITH LABEL PRECAUTIONS, WARNINGS AND DIRECTIONS; AND IN CONFORMITY WITH FEDERAL AND STATE REGULATIONS.

**DIRECTIONS FOR USE**

It is a violation of Federal law to use this product in a manner inconsistent with its labeling

**FOR HOMEOWNER USE ONLY.** DRAGON® EASY GARDEN™ 5% DUST controls a wide range of insect pests. Apply when insects first appear before damage from feeding occurs. Wearing household latex or rubber gloves, use a dust applicator such as a shaker can, dust gun, puffer or other bulbous duster, rotary duster or other appropriate duster as available. Dust lightly to cover upper and lower leaf surfaces with a thin, even film of dust. Apply when air is calm to avoid drift and contact with eyes and skin. Start applying at the farthest corner of the treatment area and work backward to avoid contact with dusted surfaces. Allow dust to settle in treated areas before reentering. Do not repeat application more than once a week. Do not use with lime or other alkaline materials. DRAGON® EASY GARDEN™ 5% Dust may be applied up to harvest except where noted. Subsequent planting of food and feed crops in treated soil must be made with crops on this or other carbaryl labels.

**BEANS-** To kill Mexican bean beetles, Leafhoppers, Flea beetles, apply approximately ½ lb./1,000 sq. ft. DO NOT feed treated bean vines to domestic animals.

**LETTUCE-** To kill Lygus and Stink bugs, apply approximately 1 lb./1000 sq. ft. DO NOT apply to head lettuce within 3 days of harvest or within 14 days to leaf lettuce.

**CORN-** Use approximately ¼ lb./1,000 sq. ft. for Corn earworms, Fall armyworms, Flea beetles, Japanese beetles, Sap beetles, Leafhoppers and European corn borers. For corn borers and larvae in whorls (budworm damage) and for foliage feeders, apply thoroughly into the whorls when plants are about knee high. Repeat at weekly intervals until control is achieved. For insects attacking silks and ears, apply when first silks appear and continue until silks begin to dry. Three or more applications may be required depending on severity of infestation. Re-apply immediately after rain. Allow 7 days before harvest, or before allowing domestic animals to feed in treated areas. Application of this product to the tassel region of corn during the pollen shed period will seriously reduce bee populations.

**POTATOES, TOMATOES, EGGPLANT AND PEPPERS-** To kill Colorado potato beetles, Leafhopper, and Flea beetles, apply approximately ½ lb./1,000 sq. ft. To kill Tomato fruitworms, Fall armyworms, Tomato hornworms, European corn borers, Stink bugs and Lygus bugs, apply approximately ¼ lb./1,000 sq. ft.

**CUCUMBERS, SUMMER SQUASH-** To kill Pickleworms, Melonworms, Cucumber beetles, Squash bugs, Flea beetles, apply approximately ½ lb./1,000 sq. ft.

**GRAPES-** To kill Leafhoppers, Japanese beetles, Grape berry moths, apply approximately 1 lb./1,000 sq. ft.

**STRAWBERRIES-** To kill Meadow spittlebugs, Leaf rollers, apply approximately 1 lb./1,000 sq. ft. DO NOT apply within 1 day of harvest.

**ROSES, AZALEAS, AND OTHER ORNAMENTALS-** To kill Japanese beetles, Periodical cicadas, Aphids, Tent caterpillars, Lace bugs, Boxwood leaf miners, apply approximately 1 ¼ lbs./1,000 sq. ft. Injury to tender foliage may occur if plants are wet when dusted or in presence of high humidity. DO NOT use on Boston ivy.

**DOGS, CATS - READ ENTIRE LABEL BEFORE EACH USE. USE ONLY ON DOGS OR CATS:** To kill Fleas and Brown Dog Ticks: Use product only outside or in a well-ventilated area. Wearing household latex or rubber gloves, dust entire animal, avoiding pets eyes, nose, mouth and genital areas. Rub or brush pet's hair to work dust down to the skin. Do not repeat treatment for 1 week. This product should not be applied by children. Do not use on pregnant dogs. Do not use on kittens or puppies under 12 weeks of age. Consult a veterinarian before using this product on debilitated, aged, pregnant, nursing or medicated animals. Dust bedding and doghouse using a shaker can or other dust applicator. Sensitivities may occur after using ANY pesticide product for pets. If signs of sensitivity occur, bathe your pet with mild soap and rinse with large amounts of water. If signs continue, consult a veterinarian immediately.

**PRECAUTIONARY STATEMENTS**

**Hazards to Humans and Domestic Animals**

**CAUTION:** May be harmful if swallowed. Avoid breathing dust. Avoid contact with eyes, skin or clothing. DO NOT take internally. KEEP OUT OF REACH OF CHILDREN AND ANIMALS. Do not use this product on animals simultaneously or within 30 days before or after treatment with or exposure to cholinesterase inhibiting drugs, pesticides or chemicals. However, flea and tick collars may be immediately replaced.

**USER SAFETY REQUIREMENTS**

- Where long sleeved shirt, long pants, shoes plus socks and household latex or rubber gloves when applying this product.
- Change clothing as soon as possible after use.
- Wash the outside of gloves before removing. As with any pesticide product, wash hands thoroughly immediately after handling and before eating, smoking or using the toilet.
- Do not allow children or pets to contact treated area until dust has settled.

**FIRST AID**

- If Swallowed:** Induce vomiting by touching back of throat with finger and seek medical attention immediately.
- If In Eyes or On Skin:** Flush eyes with plenty of water. Wash skin thoroughly with soap and water.
- Note to Physician & Veterinarian:** Carbaryl is a moderate, reversible cholinesterase inhibitor. Atropine in antidotal.

**STORAGE & DISPOSAL**

- Storage:** Store only in original container, in a cool, dry place inaccessible to children and pets and away from feed and foodstuffs.
- Pesticide Disposal:** Securely wrap original container in several layers of newspaper and discard in trash.
- Container Disposal:** Do not reuse empty bag. Discard bag in trash.

**STAINING PRECAUTION**

Staining may occur on certain surfaces such as stucco, brick, cinder block, wood, fabrics and carpet. Deposits on painted or stained surfaces or finishes (e.g. cars, house trailers, boats, etc.) should be immediately removed by washing to prevent discoloration. Avoid application to surfaces where visible residues are objectionable. Staining of fabrics and carpet may be permanent.

**NOTICE:** Buyer assumes all risks of use, storage or handling of this material not in strict accordance with DIRECTIONS and CAUTIONS stated on this label.

**ENVIRONMENTAL HAZARDS**

This product is extremely toxic to aquatic and estuarine invertebrates. Do not apply directly to water. Do not contaminate water by cleaning of equipment or disposal of wastes. This product is highly toxic to bees exposed to direct treatment or residues on blooming crops or weeds. Do not apply this product or allow it to drift to blooming crops or weeds if bees are visiting the treatment area.

EPA REG. 16-27 EPA Est. 16-VA-1 769-GA-1, 3342-NC-1, Subscript following EPA Est. No. corresponds to first digit in Lot No.

Manufactured by  
**DRAGON CHEMICAL CORPORATION**  
Roanoke, VA 24019-7311

