

4-440

8-9-2002

117

Please read instructions on reverse before completing form.

Form Approved, OMB No. 2070-0060, Approval expires 2-28-95



United States Environmental Protection Agency Washington, DC 20460

Registration Amendment Other

OPP Identifier Number

Application for Pesticide - Section I

1. Company/Product Number: 4-440
2. EPA Product Manager: George La Rocca
3. Proposed Classification: None, Restricted
4. Company/Product (Name): Bonide Household Insect Control
5. Name and Address of Applicant: Bonide Products, Inc., 6301 Sutliff Rd., Oriskany, NY 13424
6. Expedited Review: In accordance with FIFRA Section 3(c)(3)(b)(i), my product is similar or identical in composition and labeling to: EPA Reg. No., Product Name

Section - II

Amendment - Explain below. Resubmission in response to Agency letter dated. Notification - Explain below. Final printed labels in response to Agency letter dated AUG - 9 2002. "Me Too" Application. Other - Explain below.

Explanation: Use additional page(s) if necessary. (For section I and Section II.)

Notification of: To add

Caution Staining language.

This notification is consistent with the provisions of PR Notice 98-10 and EPA regulations at 40 CFR 152.46, and no other changes have been made to the labeling or the CSF of this product, Bonide Products, Inc. understands that it is a violation of 18 U.S.C. Sec. 1001 to willfully make any false statement to EPA and further understands that if this notification is not consistent with the terms of PR Notice 98-10 and 40 CFR 152.46, this product may be in violation of FIFRA and Bonide Products, Inc. may be subject to enforcement action and penalties under sections 12 and 14 of FIFRA.

Section - III

1. Material This Product Will Be Packaged In: Child-Resistant Packaging, Unit Packaging, Water Soluble Packaging, 2. Type of Container: Metal, Plastic, Glass, Paper, Other (Specify). 3. Location of Net Contents Information: Label, Container. 4. Size(s) Retail Container. 5. Location of Label Directions. 6. Manner in Which Label is Affixed to Product: Lithograph, Paper glued, Stenciled, Other.

Section - IV

1. Contact Point: Name: Cheryl K. Schultz, Title: Registration Manager, Telephone No.: 315-436-8231. Certification: I certify that the statements I have made on this form and all attachments thereto are true, accurate and complete. 2. Signature: Cheryl K. Schultz, 3. Title: Registration Manager, 4. Typed Name: Cheryl K. Schultz, 5. Date: Jan 2, 2002, 6. Date Application Received: (Stamped)

2/17

NOTIFICATION

AUG - 9 2002

Household Insect Control

TRUSTED SINCE 1926



Kills: ants, bedbugs, boxelder bugs, centipedes, crickets, fleas, houseflies, palmetto bugs, roaches, scorpions, silverfish, spiders, waterbugs and other listed insects

- Contact kill gives you immediate results when spraying insects directly, while residual activity kills insects when they return to treated areas

Contains

DeltaGard

DELTA GARD INSECTICIDE
DELTA GARD INSECTICIDE
DELTA GARD INSECTICIDE



- Keeps on killing for up to 4 months
- Odorless, non-staining, no oily residue

KEEP OUT OF REACH OF CHILDREN
CAUTION

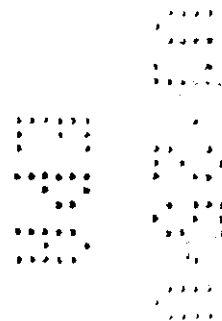
Net Contents 128 FL. OZ. (1 Gal.) (3.784 Liters)

ACCEPTED

FEB 28 2001

Under the Federal Insecticide, Fungicide, and Plant Growth Regulator Act.
This is a registered pesticide

4-440



HOUSEHOLD INSECT CONTROL

Ready To Use

For Indoor and Outdoor Use

- Water-Based
- Kills on Contact
- Keeps Killing for up to 4 Months
- Kills Spiders, Centipedes & Scorpions
- Kills Roaches, Ants & Fleas on Contact
- Odorless
- Non-Staining
- Easy-to-Use
- For Use on Houseplants
- Kills Fleas
- No Oily Residue
- Long-Lasting

Kills: Firebrats, Booklice, Silverfish, Crickets, Sowbugs, Centipedes, Bedbugs, Scorpions, Houseflies, Gnats, Mosquitoes, Small Flying Moths, Pantry Pests, Carpet Beetles, Deerflies, Horseflies, Wasps, Mud Daubers, Yellow Jackets, Bees, BN Hornets and Termites.

Store and transport in an upright position.

EPA Est. No. 4-N-1 EPA Reg. No. 4-448
Bayer Corporation Limited Label Claims.

Manufactured by
BONIDE PRODUCTS, INC.
Oriskany, NY 13424

80

2400



3

they return to treated areas. Bonide Household Insect Control will not stain surfaces or fabrics.

Bonide Household Insect Control is intended to be used in and around residences and their immediate surroundings such as (but not limited to): apartments, apts, trailers, automobiles, basements, bathrooms, boats, cabins, campers, carports, cat sleeping quarters, clothes storage, condominiums, decks, dens, driveways, garages, gazebos, homes, kitchens, lanais, living rooms, parlors, patios, pet sleeping areas, play rooms, porches, recreational vehicles, rooms, solariums, storage areas, sun rooms, utility rooms and verandahs. Do not use in commercial food handling establishments, restaurants, or other places where food is commercially prepared or processed.

INDOORS:

Cockroaches (including adult and immature stages of both non-resistant and organophosphate and carbamate resistant strains), ants, booklice, boxelder bugs, centipedes, crickets, dermestids, firebrats, fleas, palmate bugs, silverfish, sowbugs and waterbugs: Apply as a spot and crack & crevice treatment to areas where these pests crawl and hide, especially in hidden areas around sinks and storage areas, behind baseboards, around doors and windows, behind and under refrigerators, cabinets, sinks and stoves, the underside of shelves, drawers, bookcases, and similar areas. Cover all food handling surfaces and cover or remove all food and cooking utensils or wash thoroughly after treatment. Exposed food should be covered or removed.

5

inside surfaces of window and door frames, surfaces around light fixtures and cords, railings, etc. and anywhere these insects may rest. Insects coming to rest on treated surfaces will be killed.

HORSE STABLES: To control stable flies, horn flies, house flies, face flies, horse flies, deer flies, mosquitoes and gnats. Apply thoroughly to surfaces until wet. Insects coming to rest on treated surfaces will be killed or repelled. Do not spray animals or humans, or apply to animal feed or watering equipment.

PANTRY PESTS - Grain Beetles (Rusty, Merchant and Saw-toothed), Flour Beetles (Red and Confused), Chocolate Moths, Cigarette Beetles, Clover Mites, Cluster Flies, Drugstore Beetles, Elmwood Beetles, Rice Weevils, Lesser Grain Borers, Spider Beetles and Tobacco Moths: Treat exposed stages. Remove all food-stuffs, utensils and shelf paper from area to be treated. Discard used shelf paper and any infested foodstuffs. Apply spray to shelves and in cracks and crevices behind and under cupboards and cabinets. Allow to dry prior to replacement of shelf paper, food and utensils. Wash any exposed food handling surfaces and utensils before use.

Carpet Beetles (Black, Furniture and Varied): Spray on and under edges of floor coverings, under rugs and furniture and in closets or other localities where these insects are found.

Webbing Clothes Moths: Use this product as a crack and crevice treatment in closets and other storage areas where these pests are found. This is an adjunct treatment and will not control moth larvae already on clothes. Do not apply to clothing.

*Use Caution on Fine Finishes and Fabrics
Test small area first
Shake well before use.*

2

3/17

PRECAUTIONARY STATEMENTS

Hazards To Humans & Domestic Animals - CAUTION

Contact with product may result in transient tingling and reddening of the skin. Avoid contact with skin or clothing. Wash thoroughly with soap and water after handling.

Environmental Hazards

This product is extremely toxic to fish and aquatic invertebrates. Do not apply directly to lakes, streams, rivers or ponds. Do not dump leftover pesticide or rinse water into drains or sewers. This product is highly toxic to bees exposed to direct treatment or residues on blooming crops or weeds. Do not apply this product or allow it to drift to blooming crops or weeds if bees are visiting the treatment area.

Physical or Chemical Hazards

Do not apply this product in or on electrical equipment due to possibility of shock hazards.

DIRECTIONS FOR USE

It is a violation of Federal law to use this product in a manner inconsistent with its labeling.

General Information: Hold container upright. Do not spray up into air. Apply to surfaces only as a spot and crack & crevice treatment. Turn sprayer nozzle to "on" position. Hold approximately 12 inches from surface to be sprayed. Squeeze trigger to spray until surface is slightly moist.

Bonide Household Insect Control long-lasting action keeps on killing for up to 4 months after you spray. Contact kill gives you immediate results when spraying insects directly, while residual activity kills insects when

4

Ants: Spray around ant trails, doors and windows and other places where ants enter the house.

Carpenter Ants: For control, locate and treat nests and surrounding areas. Apply around doors, windows and other places where ants enter premises and where they crawl and hide. Spray into infested wood through existing openings.

Fleas on Surfaces: Remove pet bedding and destroy or clean thoroughly. Spray pet resting quarters. Adult fleas and larvae contacted by spray will be killed. Put fresh bedding down once spray has dried. Do not spray animals directly. For best results, pets should be treated with an appropriate flea control product registered for use on pets before allowing them to return to the treated area. Spray rugs and carpets where infestations are bad. Delicate fabrics should be tested for staining in an inconspicuous area prior to use.

Spiders: Apply along and behind baseboards, to window and door-frames, corners, pipes, storage localities, attics, crawl spaces and other areas over which these pests may crawl.

Centipedes, Ground Beetles, Pillbugs, Sowbugs, and Scorpions: Apply around doors and windows and other places where these pests may enter premises. Treat baseboards, storage areas and other localities where these pests are found.

[SILVERFISH, CRICKETS, SPIDERS: Apply to areas infested by these pests]

FLYING INSECTS: Houseflies, gnats, mosquitoes and small flying moths: Spray localized resting areas, such as under eaves, porches,

6

Bedbugs: Remove linens and wash before reuse. Lightly spray mattresses, especially tufts, folds and edges. Apply to the interior of the frame. Allow to dry before remaking bed.

OUTDOORS:

Point sprayer away from face. Hold sprayer on a slight downward angle, approximately 12 inches from surface to be sprayed. Spray with wind if breeze is blowing. Do not contaminate fish ponds or apply directly to water.

PESTS ON OUTSIDE SURFACES OF BUILDINGS: For control of building infestation to ants, clover mites, crickets and sowbugs (pillbugs). Spray foundation of building where insects are active and may find entrance up to a height of 2 to 3 feet. Apply as to outside surfaces of buildings where insects tend to congregate. Spray areas include (but are not limited to) screens, window frames, eaves, porches, patios, garages and refuse dumps.

CRAWLING INSECTS: ants, cockroaches (including Asian cockroaches), centipedes, crickets, mole crickets, water bugs and silverfish. Spray infested surface of patio or picnic area. Also spray legs of tables and chairs.

Ants: Spray around ant trails and hills. Spray around nests hidden under steps, brickwork, concrete, etc. Break apart accessible nests and spray on and around debris.

Crickets and Fleas: Apply thoroughly to infestation in bushes, grass, etc. **Wasps, Mud Daubers, Hornets, Yellow Jackets and Bees:** Spray near and on surfaces where bees may rest. Aim spray at nest openings.

4/17

7

8

Applications should be made late in the evening when insects are at rest.

FLYING INSECTS: Houseflies, gnats, mosquitoes and small flying moths: Spray outside surfaces of window and door frames and other areas where these pests may enter the home. Also spray localized resting areas, such as under eaves, porches, surfaces around light fixtures and cords, railings, etc. where these insects may rest. Insects coming to rest on treated surfaces will be killed.

TERMITES, CARPENTER ANTS AND CARPENTER BEES: (for localized control only.) Apply Household Insect Control to voids or channels in damaged wood of a structure, or to cracks, crevices and spaces in and between wooden portions of a structure or between wood and the foundation, in locations vulnerable to attack such as crawl spaces.

For termites, the purpose of such applications is to kill workers or winged forms, which may be present in the treated areas at the time of application. Not recommended as sole protection against termites. For active infestations, get a professional inspection. Such applications are not a substitute for mechanical alteration, soil treatment or foundation treatment; but are merely a supplement. For severe termite infestation, contact a professional pest control operator in your area.

HOUSE PLANTS: To control aphids, Japanese beetles, lace bugs, leafminers, mealy bugs, mites and spider mites on house plants. Prior to spraying, remove plants from living and eating areas. Put in an area not likely to come in contact with pets, children or food. Plants can be returned to original location when leaves dry. If plants cannot be moved,

cover or remove exposed food and food handling surfaces. Avoid spraying surrounding areas.

Apply spray to upper and lower surfaces of foliage. Avoid wetting blossoms if possible.

FOR CONTROL OF ORNAMENTAL GARDEN INSECTS: For use on roses, dahlias, asters and other ornamentals to kill Japanese beetles hit by spray, as well as whiteflies, aphids, army worms, lace bugs, mealy bugs, exposed thrips, pavement ants, spiders, spider and red mites, clover mites and leafminers.

May be used on plants, as well as a multi-purpose spray in small ornamental gardens and for spot treatments to prevent insects from spreading into large garden areas.

May also be used on other plants such as African violets, asters, azaleas, begonias, camelias, carnations, chrysanthemums, delphiniums, dogwood, English ivy, Eucalyptus, fuchsia, geraniums, crassula, grape vine, Kentia palm, laurel, mangos, rhododendrons, rubber plants, snapdragons, stocks, wandering Jews and zinnias.

When spraying plants, do not operate closer than 18 inches. Use sweeping motion. Be cautious about wetting tender foliage, young plants and new growth. Do not spray plants when temperatures exceed 90° F. **DO NOT** apply to vegetable plants or other plants used for food. Spray insects directly whenever possible.

STORAGE & DISPOSAL

Storage: Store in a cool, dry area. Disposal: Do not reuse empty container. Wrap container with several layers of newspaper and discard in trash.

9

Trusted since 1926
BONIDE PRODUCTS, INC.

Complete directions for use have been removed!

KEEP OUT OF REACH OF CHILDREN

Dispose of properly

Buyers Guarantee limited to label claims

For information on pesticide products (including health concerns, medical emergencies, or pesticide incidents), call the National Pesticide Telecommunications Network at 1-800-858-7378

Questions, Concerns or Comments?

Write to

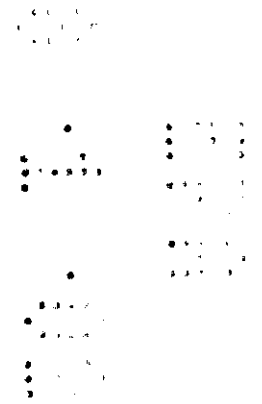
BONIDE PRODUCTS, INC.

Consumer Services

6301 Sutliff Road

Oriskany, NY 13424

↑
Lift & Peel Here

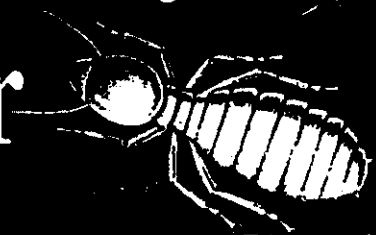


5/17

Termite & Carpenter Ant Killer

TRUSTED SINCE 1926

BONIDE®



Residential Use Only

Contains

DeltaGard

Insecticide

For Termite and Carpenter Ant Control

ACTIVE INGREDIENT

Deltamethrin.....	0.02%
OTHER INGREDIENTS.....	99.98%
TOTAL.....	100.00%

EPA Reg. No. 4-440 EPA Est. No. 4-NY-1



- Keeps killing for up to 4 months
- Kills on contact
- Non-Staining
- Odorless
- Water-based
- Easy to use

For Residential Use Only

KEEP OUT OF REACH OF CHILDREN

CAUTION

(See Back Panel for Additional Precautions)

Net Contents 128 FL. OZ. (1 Gal.) (3.784 Liters)

80

372

ACCEPTED

FEB 28 2001

Under the Federal Insecticide, Fungicide, and Rodenticide Act as amended, for the pesticide registered under EPA Reg. No. 4-440

6/17

BONIDE TERMITES & CARPENTER ANT KILLER, RTU, EPA Reg. No. 4-440 EPA Est. No. 4-NY-1 Gallon

PRECAUTIONARY STATEMENTS HAZARDS TO HUMANS AND DOMESTIC ANIMALS — CAUTION — Contact with product may result in transient tingling and reddening of the skin. Avoid contact with skin or clothing. Wash thoroughly with soap and water after handling.

ENVIRONMENTAL HAZARDS — This product is extremely toxic to fish and aquatic invertebrates. Do not apply directly to lakes, streams, rivers, or ponds. Do not dump leftover pesticide or rinse water into drains or sewers. This product is highly toxic to bees exposed to direct treatment or residues on blooming crops or weeds. Do not apply this product or allow it to drift to blooming crops or weeds if bees are visiting the treatment area.

PHYSICAL OR CHEMICAL HAZARDS — Do not store this product in or on electrical equipment due to possibility of shock hazards.

DIRECTIONS FOR USE — It is a violation of Federal law to use this product in a manner inconsistent with its labeling.

GENERAL INFORMATION — Hold container upright. Do not spray up into air. Apply to surfaces only as a spot and crack & crevice treatment. Turn sprayer nozzle to "on" position. Hold approximately 12 inches from surface to be sprayed. Squeeze trigger to spray until surface is slightly moist.

Bonide Termites & Carpenter Ant Killer RTU long-lasting action keeps on killing for up to 4 months after you spray. Contact kill gives you immediate results when spraying insects directly, while residual activity kills insects when they return to treated areas. Bonide Termites & Carpenter Ant Killer RTU will not stain surfaces or fabrics.

Bonide Termites & Carpenter Ant Killer RTU is intended to be used in and around residences and their immediate surroundings such as (but not limited to): apartments, atriums, attics, automobiles, basements, bathrooms, boats, cabins, campers, carpools, cat sleeping quarters, clothes storage, condominiums, decks, dens, driveways, garages, gazebos, homes, kitchens, lanais, living rooms, pantries, patios, pet sleeping areas, play rooms, porches, recreational vehicles, rooms, solariums, storage areas, sun rooms, utility rooms and verandahs. Do not use in commercial food handling establishments, restaurants or other places where food is commercially prepared or processed.

INDOORS:

CARPENTER ANTS: For control, locate and treat nests and surrounding areas. Apply around doors and windows and other places where ants enter premises and where they crawl and hide. Spray into infested wood through existing openings. **ANTS:** Spray around ant trails, doors and windows and other places where ants enter the house.

OUTDOORS:

ANTS: Spray around ant trails and hills. Spray concrete, etc. Break apart accessible nests and spray on and around debris.

WASPS, MUD DAUBERS, HORNETS, YELLOW JACKETS AND BEES: Spray nest and other surfaces where bees may rest. Aim spray at nest openings. Applications should be made late in the evening when insects are at rest.

TERMITES, CARPENTER ANTS AND CARPENTER BEES — For localized control only. Apply Bonide Termites & Carpenter Ant Killer RTU to voids or channels in damaged wood of a structure, or to cracks, crevices and spaces in and between wooden portions of a structure or between wood and the foundation, in locations vulnerable to attack such as crawl spaces.

For termites, the purpose of such applications is to kill workers or winged forms, which may be present in the treated areas at the time of application. Not recommended as sole protection against termites. For active infestations, get a professional inspection. Such applications are not a substitute for mechanical alteration, soil treatment or foundation treatment but are merely a supplement. For severe termite infestation, contact a professional pest control operator in your area.

STORAGE AND DISPOSAL — Storage: Store in a cool, dry area. Disposal: Do not reuse empty container. Wrap container with several layers of newspaper and discard in trash.

Notice: Buyer assumes all responsibility for safety and use not in accordance with directions.

For information on pesticide products (including health concerns, Medical emergencies, or pesticide incidents), call National Pesticide Telecommunications Network at 1-800-858-7378.

BONIDE PRODUCTS, INC.
YORKVILLE, NY 13495

00



Use Caution on Fine Finishes and fabrics. Test small area first. Shake well before use.

Bonide Products, Inc.

6301 Sutliff Rd.
Oriskany, NY 13424

Phone (315) 736-8231
Fax 736-7582

July 30, 2002

Document Processing Desk (NOTIF)
Office of Pesticide Programs (7504C)
U.S. Environmental Protection Agency
Room 266A, Crystal Mall 2
1921 Jefferson Davis Highway
Arlington, VA 22202-4501

Subject: Notification of: Caution language.

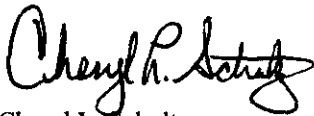
Bonide Household Insect Control EPA Reg. No. 4-440

Enclosed please find the Notification to add Caution staining language. I have highlighted the section that contains this language.

Use caution on fine finishes and fabrics. Test small area first. Shake well before use.

Should you have any questions or comments please do not hesitate to give me a call or e-mail.

Sincerely,



Cheryl L. Schultz
Registration Manager
cheryls@bonide.com

