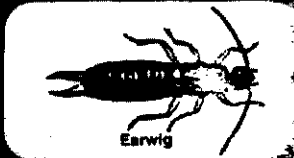


Can be used
around vegetable
gardens

BONIDE[®]

SLUG, SNAIL & SOWBUG BAIT

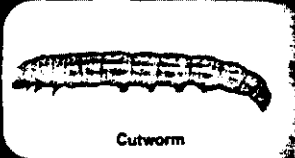
THIS EXCEPTIONAL APPELUMACE BAIT WILL ATTRACT AND KILL SLUGS, SNAILS, ANTS, EARWIGS, CUTWORMS, SOWBUGS, MILLIPEDES, CRICKETS, GRASSHOPPERS, ARMYWORMS AND CHINCHBUGS AROUND FLOWERS, SHRUBS, LAWNS, AND CERTAIN LISTED VEGETABLES. READ ENTIRE LABEL BEFORE USE.



Earwig



Slug



Cutworm

Metaldehyde (2,4,6,8-tetramethyl-1,3,5,7-tetraoxycyclo-octane)

PRECAUTIONARY STATEMENTS

HAZARDS TO HUMANS AND DOMESTIC ANIMALS—CAUTION

May be harmful if swallowed. Avoid breathing dust. Avoid contact with skin, eyes or clothing. Wash thoroughly after use. Keep out of reach of children and domestic animals. Avoid contamination of feed and foodstuffs.

IMPORTANT: Keep away from children, dogs and pets. Bait may be attractive to dogs. Confine pets during application to prevent them from believing they are being fed. Use and store under conditions where there will not be a hazard.

STATEMENT OF PRACTICAL TREATMENT

If swallowed: Call a physician or Poison Control Center. Drink 1 or 2 glasses of water and induce vomiting by touching finger to back of throat.

If in eyes, flush with plenty of water. Get immediate attention.

If on skin, remove contaminated clothing and wash affected areas with soap and water.

ENVIRONMENTAL HAZARDS

This product is extremely toxic to aquatic invertebrates. Do not apply directly to water or wetlands. Do not contaminate water by cleaning of equipment or disposal of wastes.

This product is highly toxic to bees exposed to direct treatment or residues on blooming crops or weeds. Do not apply this product or allow it to drift to blooming crops or weeds if bees are visiting the treatment area.

(swamps, bogs, marshes and potholes).

when disposing of equipment washwaters.

This pesticide may be fatal to dogs or other pets if eaten. Keep pets out of treated area.

DIRECTIONS FOR USE

It is a violation of Federal law to use this product in a manner inconsistent with its labeling.

STORAGE AND DISPOSAL

Store this product in its original container and keep in a locked storage area out of reach of children and domestic animals. Do not reuse container. Securely wrap container in several layers of newspaper and discard in trash.

BONIDE SLUG, SNAIL & SOWBUG BAIT draws pests to it for better results. It works two ways—by simple contact or by being eaten.

KILLS: Slugs, Snails, Ants, Earwigs, Cutworms, Armyworms, Sowbugs, Millipedes, Crickets, Grasshoppers. **PROTECTS:** Flowers, Ornamentals, Shrubs, Lawns and certain listed vegetables. Remains effective after rain or sprinkling.

HOW TO USE: Be sure area to be treated is damp. In dry weather, water area well before baiting. Apply bait in evening or at night as these pests feed mainly at night. Until under control, bait should be renewed every two weeks or more often for heavy infestations. Slugs and snails favor dark, damp places. Bait especially well shaded areas around flowers, shrubs, rockeries and other ornamentals where these pests stay during daylight hours. Slugs, snails and the listed insects are attracted to the bait. Place bait upwind to the infestation for best results. Upwind is the direction from which the wind is blowing from bait toward pests.

Slugs, snails and the listed insects travel or migrate extensively. When invasions from adjacent areas are a probability, a lightly applied band of bait the entire length of the infested area will provide a barrier and aid in control.

FLOWERS, ORNAMENTALS, SHRUBS, GROUND COVERS—To kill slugs, snails, armyworms, earwigs, sowbugs, millipedes, crickets, chinch bugs and grasshoppers broadcast the bait lightly over the infested area using 1 pound per 250 square feet.

DICHONDRA LAWNS, TURF LAWNS—To kill slugs and snails, water infested areas thoroughly. Broadcast directly on lawn or turf. Do not water treated areas for 48 hours. Use 1 pound to cover 1,500 sq. ft. of infested area.

VEGETABLES—To kill slugs, snails, armyworms, cutworms, earwigs, sowbugs, crickets, grasshoppers, broadcast lightly on soil surface around plants, using 1 lb. per 1,000 sq. ft. of garden area. Do not allow bait to contact foliage or edible part of crops. Observe the number of days before harvest for last application as noted in chart:

Crop	Days between final application and harvest
Beans, Carrots, Corn, Eggplant, Peppers, Tomatoes, Potatoes	0
Asparagus, Strawberries	1
Beets (roots), Broccoli, Brussels Sprouts, Cabbage, Cauliflower, Lettuce (head), Parsnips, Radish, Rutabaga, Turnips (roots)	3
Beets (tops), Kale, Lettuce (leaf), Spinach, Turnips (tops)	14

The buyer must assume all responsibility for use of this product when not used in strict accordance with directions or established safe practice, or when used under abnormal conditions not reasonably foreseeable to the seller.

Manufactured by

BONIDE CHEMICAL CO., INC. • YORKVILLE, NY 13495

ACCEPTED
 JUL 20 1989
 Under the Federal Insecticide,
 Fungicide, and Rodenticide Act,
 as amended, for the pesticide
 registered under
 EPA Reg. No. 4-333