

BONIDE

DURSBAN 5 LAWN INSECT CONTROL GRANULES

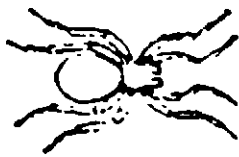
**ACCEPTED**

MAY 13 1994

Under the Federal Insecticide, Fungicide, and Rodenticide Act, as amended, for the pesticide registered under EPA Reg. No. 4-207

KILLS ANTS, SPIDER, FLEAS, EARWIGS, MOLE CRICKETS, FIRE ANTS, TICKS AND OTHER NUISANCE INSECTS AROUND HOMES, LAWNS, PATIOS, AND GARAGES.

For Household Use Only



EPA Est. No. 4-NY-1

EPA Reg. No. 4-207

ACTIVE INGREDIENT:

Chlorpyrifos (0,0-diethyl 0-(3,5,6-trichloro-2-pyridyl)phosphorothioate) ..... 0.5%

INERT INGREDIENTS ..... 99.5%

\*Dursban - Trademark of The Dow Chemical Co., Midland, MI  
(US Patent No. 3,244,586)

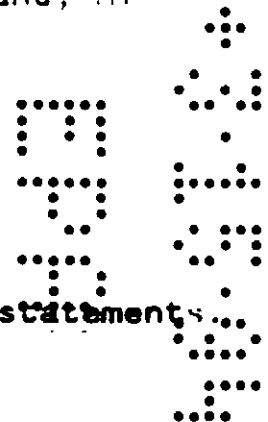
KEEP OUT OF REACH OF CHILDREN

CAUTION

See back panel for additional precautionary statements

Net Weight:

1 lb., 4 lbs., & 10 lbs.



PRECAUTIONARY STATEMENTS

HAZARDS TO HUMANS AND DOMESTIC ANIMALS - CAUTION

May be harmful if swallowed. Avoid breathing of dust. Do not take internally. Avoid contact with eyes and skin. Flush contaminated eyes with plenty of water, and get medical attention if irritation persists. Wash thoroughly after handling. Wash contaminated clothing before re-use. Keep away from food, feed-stuffs and domestic water supplies.

NOTE TO PHYSICIAN: Active ingredient is a cholinesterase inhibitor. Treat symptomatically. Atropine is an antidote.

Keep children and pets off treated areas until granules are washed into soil and grass is dry.

STATEMENT OF PRACTICAL TREATMENT

If Swallowed: Call a physician or Poison Control Center. Drink 1 or 2 glasses of water and induce vomiting by touching back of throat with finger. Do not induce vomiting or give anything by mouth to an unconscious person.

If on Skin: In case of contact, remove contaminated clothing and immediately wash skin with plenty of soap and water.

If in eyes: Flush with plenty of water.

ENVIRONMENTAL HAZARDS

This product is toxic to birds, fish, and aquatic invertebrates. Birds feeding in treated areas may be killed. Clean up spilled product to reduce exposure to wildlife. Do not apply directly to water. Runoff may be hazardous to aquatic organisms in neighboring areas. Do not contaminate water when disposing of equipment washwaters.

DIRECTIONS FOR USE

It is a violation of Federal law to use this product in a manner inconsistent with its labeling.

STORAGE AND DISPOSAL

Store in original container, preferably in a locked storage area. Do not reuse bag. Discard bag in trash.

395  
3

DIRECTIONS

MOLE CRICKETS,

JAPANESE BEETLE & EUROPEAN CHAFER GRUBS: Apply DURSBAN 5 at the rate of 1 to 2 lbs. per 100 sq. ft. Apply the granules uniformly over the area treated into the turf. For best results, treat when grubs are young and actively feeding near the soil surface, usually during late July and August. Consult you local agricultural extension service specialist for proper time to treat in your area.

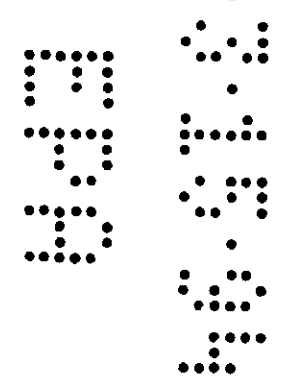
To control ants, brown dog ticks, crickets, chinch bugs, chiggers, clover mites, cutworms, earwigs, fleas, grasshoppers, sowbugs, and spiders in home lawns, ornamental and recreational areas, and around patios, foundations and garages, uniformly apply this product according to the following chart. Immediately following application, sprinkle the treated area with water. Use the chart to determine how much water to use.

RATES TO USE

Area to be Treated	Pounds of LAWN GRANULES	Gallons of Water to Sprinkle on Turf after Treatment
200 Sq. Ft.	1	6
800 Sq. Ft.	4	18

FIRE ANTS - Spot Treatment: To control fire ants in lawns and other recreational areas, apply 1/2 cup in a 3 ft. radius over and around each fire ant mound. Immediately after application, water in thoroughly. A minimum of 1 gallon of water should be applied to each mound area. Do not use more than 2 gallons of water. Apply water gently to avoid disturbing ants. Use of high pressure watering may disturb the ants and cause migration, thus reducing effectiveness of treatment. Treat new mounds as they appear. For best results apply in cool weather, 65 - 80° F., or in the early morning or late evening hours.

**BEST AVAILABLE COPY**



475

**DIRECTIONS FOR USE FOR 10# BAGS**

(A) CHINCH BUGS, SOD WEBWORMS (LAWN MOTHS), EARWIGS, GRASSHOPPERS, ANTS, SOWBUGS (PILLBUGS), BROWN DOG TICKS AND CUTWORMS: Apply DURSBAN 5 uniformly with any hand or power operated drop type or rotary spreader, when insects first appear, at the rate of 5 lbs. per 1,000 sq. ft. For more uniform distribution, apply twice at right angles at rate of 2½ lbs. per 1,000 sq. ft. Immediately after application, sprinkle treated area at rate of 30 gallons water per 1,000 sq. ft. to wash granules into zone of insect infestation. Re-treat as necessary.

MOLE CRICKETS,

(B) JAPANESE BEETLE & EUROPEAN CHAFER GRUBS: Apply DURSBAN 5 as shown in the table, 10 to 20 lbs. per 1,000 sq. ft. Apply the granules uniformly over the area treated into the turf. For best results, treat when grubs are young and actively feeding near the soil surface, usually during late July and August. Consult your local agricultural extension service specialist for proper time to treat in your area.

AREA TREATED	GRANULES AMOUNT FOR INSECTS IN		WATER AMOUNT
	Group (A)	Group (B)	
1,250 sq. ft.	6 lbs.	12 - 50 lbs.	75 gals.
2,500 sq. ft.	12½ lbs.	25 - 50 lbs.	150 gals.

SUGGESTED SPREADER SETTINGS: These settings will give approximate starting points for spreader application. Treat a small measured area with a weighed quantity and adjust your spreader by opening or closing to obtain correct coverage. Adjustments will be necessary due to condition of spreader, rate of walk and terrain characteristics.

SPREADER	RATE	RATE	RATE
	10 lbs./ 1,000 sq. ft.	5 lbs./ 1,000 sq. ft.	2½ lbs./ 1,000 sq. ft.
Lawn Beauty/ Asgrow	9	7½	6½
Modern/Scotts	8½	7-3/4	6½
Jackson/Patco	8-3/4	7½	6
Cyclone/Ortho	6½	5	4½

**BEST AVAILABLE COPY**

**BONIDE DURSBAN 5 LAWN INSECT CONTROL GRANULES**  
**EPA Reg. No. 4-207**

595  
5

To control ants, brown dog ticks, crickets, chiggers, clover mites, cutworms, earwigs, fleas, grasshoppers, sowbugs, and spiders in home lawns, ornamental and recreational areas, and around patios, foundations and garages, uniformly apply this product according to the following chart.

Immediately following application, sprinkle the treated area with water. Use the chart to determine how much water to use.

RATES TO USE

Area to be Treated	Pounds of LAWN GRANULES	Gallons of Water to Sprinkle on Turf after Treatment
200 sq. ft.	1	6
600 sq. ft.	3	13
2,000 sq. ft.	10	60

FIRE ANTS - Spot Treatment: To control fire ants in lawns and other recreational areas, apply 1/2 cup in a 3 ft. radius over and around each fire ant mound. Immediately after application, water in thoroughly. A minimum of 1 gallon of water should be applied to each mound area. Do not use more than 2 gallons of water. Apply water gently to avoid disturbing ants. Use of high pressure watering may disturb the ants and cause migration, thus reducing effectiveness of treatment. Treat new mounds as they appear. For best results apply in cool weather, 65 - 80°F., or in the early morning or late evening hours.

Buyer's Guarantee Limited to Label Claims  
and Refund of Purchase Price of Product Only

Manufactured by  
BONIDE PRODUCTS, INC., YORKVILLE, NY 13495

