

Reg # 4-123

PM-14

134

300 S-409156
17

DEC 31 1991

Certified Mail (70003)

Bonide Chemical Co, Inc.
2 Wurz Avenue
Yorkville, NY 13495

Subject: Mosquito Beater
EPA Reg. No. 4-123
Amended Application and Confidential Statement of Formula
dated November 6, 1991

The labeling referred to above, submitted in connection with registration under the Federal Insecticide, Fungicide, and Rodenticide Act (FIFRA) is acceptable, subject to the comments listed below.

1. Revise your "STORAGE AND DISPOSAL" block as follows:

STORAGE AND DISPOSAL

STORAGE: Store in a cool, dry place in an area inaccessible to children or pets.

DISPOSAL: Do not reuse empty container. 1/ Securely wrap in newspaper and discard in trash.

1/ If container is bottle, can, or jar, add this second sentence here: "Rinse thoroughly."

Submit five (5) copies of your final printed labeling before you release the product for shipment.

By January 2, 1993, submit three (3) copies of product performance data conducted on mosquitos, in accordance with Section 95-10 of the EPA Guidelines (the relevant three pages of which were sent to you in our December 16, 1985, letter. Submit these data in accordance with PR Notice 86-5. If you have questions about testing, contact Mr. Vern McFarland at 703-305-6694. If you have other questions about this letter, contact Mr. Dan Peacock at 703-305-5407.

If you submit a protocol, you must submit it by March 1, 1992, to provide adequate time for the Agency to review the protocol and for you to test your product. The authority for this request is section 3(c)(2)(B) of FIFRA.

Until July 1, 1992, you can continue to sell and distribute existing stocks. Dealers and users will be allowed to sell or use such stocks until they are exhausted.

BEST AVAILABLE COPY

If these conditions are not complied with, the registration will be subject to cancellation in accordance with FIFRA sec. 6(e). Your release for shipment of the product bearing the amended labeling constitutes acceptance of these conditions.

A stamped copy of the labeling is enclosed for your records.

Sincerely,

RAF

Robert A. Forrest,
Product Manager 14
Insecticide-Rodenticide Branch
Registration Division (H-7504C)

Enclosure 1) Stamped label
2) A-79 Enclosure
3) Previous 2 efficacy reviews + 3 pp of Guidelines for efficacy
cc Vern McFarland

RAF:dbp:CM2:R1221:305-5407:12/31/91:Peacock Disk 59(4)

BEST AVAILABLE COPY

BONIDE[®]

3 2 4

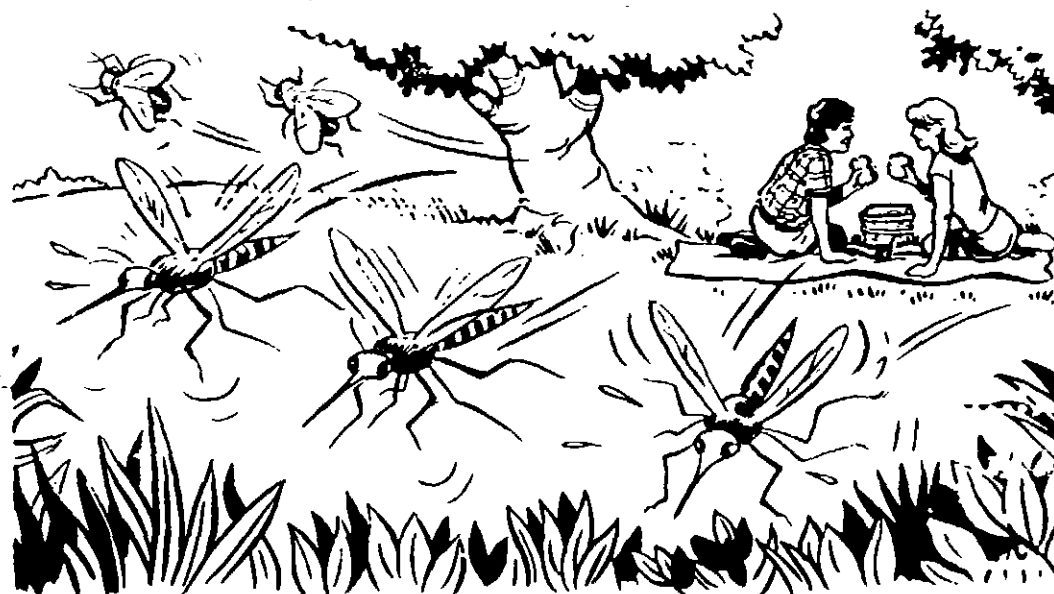
BEST AVAILABLE COPY

MOSQUITO BEATER[®]

AREA MOSQUITO PREVENTIVE

ALSO AIDS IN THE REDUCTION OF OTHER INSECTS SUCH AS BLACK FLIES AND HOUSEFLIES (OUTDOORS)

Pleasantly scented, clean, dustless, dry granules. Easy to apply right from container. Long lasting. Treats 100 x 50 foot area. Enjoy yourself without mosquitoes around Patios, Barbeque and Swimming Pool Areas, Lawns, Campsites, Picnic and Camp Sites, Tennis Courts, Outdoor Movies, Golf Courses, Concerts and Other Meeting Areas



EPA Est. 4-NY-1

EPA Reg. No. 4-123

ACTIVE INGREDIENTS:	
Naphthalene	4.5%
Isotyrpropylene glycol	0.5%
INERT INGREDIENTS:	95.0%
TOTAL	100.0%
Contains Petroleum Distillate	

CAUTION - KEEP OUT OF REACH OF CHILDREN

See back panel for additional precautionary statements and directions.

NET WT.: 1 lb. 10 oz.

494

PRECAUTIONARY STATEMENTS

HAZARDS TO HUMANS AND DOMESTIC ANIMALS

CAUTION

May be harmful if swallowed. Avoid prolonged skin contact. Wash after handling. If swallowed, call a physician or poison control center. If in eyes, flush with water. Call a physician if irritation persists.

Physical and Chemical Hazards

Flammable. Do not use or store near heat or open flame.

DIRECTIONS FOR USE

It is a violation of Federal law to use this product in a manner inconsistent with its labeling.

Store in a cool, dry place, and in an area inaccessible to children or pets.

Pesticide Disposal: Securely wrap container in several layers of newspaper and discard in trash.

Container Disposal: Do not reuse empty container. Empty completely and discard in trash.

ACCEPTED
with COMMENTS
in EPA Letter Dated

DEC 1 1981

Mosquito Beater[®] is quick and easy to apply. It is ready to use: no mixing, no water. Simply broadcast granules on the ground or apply with a lawn spreader, dust gun or hand crank duster.

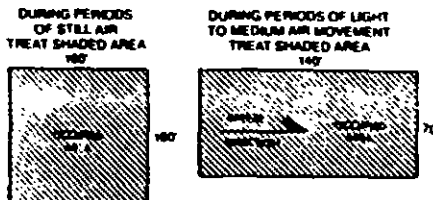
Starting with one hour after application, one treatment can be completely effective for up to two days, and can continue to provide excellent results for up to eight days, depending upon rainfall and wind currents which contribute to reinfestation.

Under the Federal Insecticide, Fungicide, and Rodenticide Act as amended, for the pesticide registered under EPA Reg. No.

4-123

As the action of Mosquito Beater[®] depends upon release of active ingredients in the vapor phase, air movements affect results considerably. Best results in small areas are obtained in quiet or relatively still air, such as occurs during early evening periods. Application should be made about an hour before the area is occupied. During periods of light to medium air currents allow a longer period prior to occupancy or treat an area large enough to overcome localized effect of breezes. (See diagram for suggested application techniques.) As a rule, the air is sufficiently still when Mosquito Beater[®] fragrance can be detected while standing in the treated area to be occupied.

Apply at the rate of one half cup per 10 foot by 10 foot area. Do not overdose desirable lawn areas. In case of overdose disperse granules with spray from garden hose. Always treat an area considerably larger than that to be occupied, usually not less than 100 feet by 50 feet or 70 feet by 70 feet and preferably double this area for best overall results. Apply liberally to moist dark areas of heavy growth. Will not harm flowers, shrubs, lawns, soil or the user. Repeat application when area becomes reinfested.



This product does not conform to EPA standards for performance for area control or repellency of mosquitoes. Recommendations for use of this product are based upon tests believed to be reliable. The buyer must assume all responsibility for use of this product when not used in strict accordance with label directions or established safe practice, or when used under abnormal conditions not reasonably foreseeable to the seller.

BEST AVAILABLE COPY

Manufactured by

BONIDE PRODUCTS, INC.

YORKVILLE, NY 13495

