

# BONIDE

PM 32 4-123 12-5-90

## MOSQUITO BEATER<sup>®</sup>

**AREA MOSQUITO PREVENTIVE**

**ALSO AIDS IN THE REDUCTION OF  
OTHER INSECTS SUCH AS BLACKFLIES  
AND HOUSEFLIES (OUTDOORS)**

Pleasantly scented, clean, dustless, dry granules. Easy to apply.

Simply broadcast granules on the ground with a hand crank duster.

Starting with one hour after application, one treatment can be completely effective for up to two days, and can continue to provide excellent results for up to eight days, depending upon rainfall and wind currents which contribute to reinfestation.

As the action of Mosquito Beater<sup>®</sup> depends upon release of active ingredients in the vapor phase, air movements affect results considerably. Best results in small areas are obtained in quiet or relatively still air, such as occurs during early evening periods. Application should be made about an hour before the area is occupied. During periods of light to medium air currents allow a longer period prior to occupancy or treat an area large enough to overcome localized effect of breezes. (See diagram for suggested application techniques.) As a rule, the air is sufficiently still when Mosquito Beater<sup>®</sup> fragrance can be detected while standing in the treated area to be occupied.

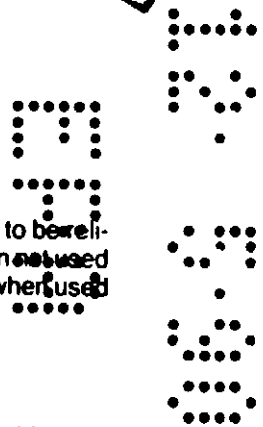
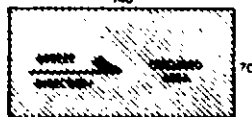
Apply at the rate of one half cup per 10 foot by 10 foot area. Do not overdose desirable lawn areas. In case of overdose disperse granules with spray from garden hose. Always treat an area considerably larger than that to be occupied, usually not less than 100 feet by 50 feet or 70 feet by 70 feet and preferably double this area for best overall results. Apply liberally to moist dark areas of heavy growth. Will not harm flowers, shrubs, lawns, soil or the user. Repeat application when area becomes reinfested.

**BEST AVAILABLE COPY**

DURING PERIODS OF STILL AIR  
TREAT SHADED AREA  
100



DURING PERIODS OF LIGHT TO MEDIUM AIR MOVEMENT  
TREAT SHADED AREA  
140



Recommendations for use of this product are based upon tests believed to be reliable. The buyer must assume all responsibility for use of this product when used in strict accordance with label directions or established safe practice, or when used under abnormal conditions not reasonably foreseeable to the seller.

**Not Reviewed. Registrant claims to be in accordance with  
Registration of Fictitious Product Guidance for Phase 2  
Harmonization, Page 2.12, Active to Start Changes in Status.**

**Manufactured by**

**BONIDE PRODUCTS, INC.  
YORKVILLE, NY 13495**

