

# TOYOTA

## Application For Certification - Part 1 2026 Model Year

**Durability Group** : TTYXEEVNNLZZ  
**Evap/refueling Families** : N/A  
**Test Group** : TTYXV00.0D11  
**Test Group Description** : Battery electric vehicle (BEV), LDV  
**Applicable Standards** : Federal states : Tier3 - Bin0 - LDV  
California : ZEV - PC  
**Carlines Covered** : RZ 350e FWD (18inch Wheels),  
RZ 350e FWD (20inch Wheels),  
ES 350e (19 inch Wheels),  
ES 350e (20 inch Wheels)  
**Engine Series** : N/A  
**Vehicles Tested** :

Vehicle I.D.	Config.	Test	Test Number
26-XB2E	00	MCT	TTYX10090167
26-XB2E	01	MCT	TTYX10090168
26-XZ2E	00	MCT	TTYX10092240
26-XZ2E	01	MCT	TTYX10092246
26-XZ2E	02	MCT	TTYX10092245

**EPA Response Requested By** : **Augst 18, 2025**  
: **February 13, 2026**  
**For Questions, Contact** : Lisa Florida 734-695-2697

**Note** : his is a model-addition running change 26-TR-21 to add ES 350e to this test group which has been already certified.

## **Table of Contents**

Section 1	Correspondence and Communications
Section 2	confidential information
Section 3	Facilities, Equipment and Test Procedures
Section 4	Reserved
Section 5	Reserved
Section 6	Maintenance
Section 7	Labels
Section 8	General Technical Description
Section 9	Reserved
Section 10	Reserved
Section 11	Starting and Shifting Schedules
Section 12	Description of Vehicles Covered by Certificate
Section 13	Reserved
Section 14	Request for Certificate
Section 15	Other Information
Section 16	Test Results
Section 17	California ARB Information
Section 18	Information on Service of Process

1. **Correspondence and Communications**

Please refer to the FOI common file.

**2.        Confidential Information**

2.1 Special Test Procedure

      Please refer to the section 16 of CBI Common file

2.2 Projected sales in California

      Please refer to the E-Cert

### **3. Facilities, Equipment and Test Procedures**

*The facilities and equipment comply with the related regulations, including 40CFR §1066.210*

<Equipment> 48 inch, single roll electric dynamometer

<Regenerative Braking> Enabled

<Range Test Procedure>

Tested according to “California Exhaust Emission Standards and Test Procedures for 2026 and Subsequent Model Zero-Emission Vehicles, adopted March 22, 2012

<Test Procedure Used>

Tested using the Multi Cycle Test (MCT)sequence

#### 3.1 Reserved

#### 3.2 Battery and Vehicle Pre-Conditioning Procedures

The traction battery and vehicle does not require any pre-conditioning to enable the vehicle system.

#### 3.3 Battery and Vehicle Break-in Period and Range

Break in Period of Vehicle	Break in mile of Vehicle
N/A	2,000 mile

## 4.Reserved

## **5.Reserved**

## **6 Maintenance**

### **6.1 Test Vehicle Scheduled Maintenance**

N/A(same as “Recommended Customer Maintenance Schedule” found in next section).

### **6.2 Recommended Customer Maintenance Schedule**

Please refer to recommended maintenance schedule in the owner’s manual.

### **6.3 Lubricants and heater fuels, if any**

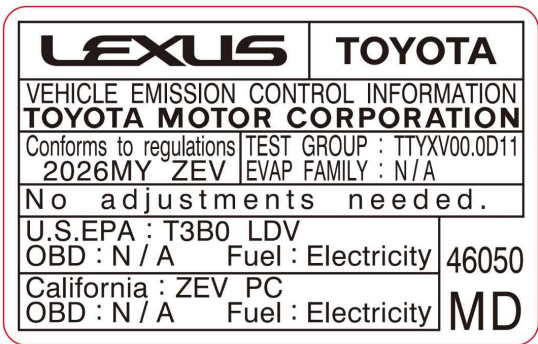
Please refer to recommended Fluid in the owner’s manual.

7 Labels

7.1 VECI Label locations : underside of the hood

7.2 Information of the Labels

Sample of VECI label



Sample of Battery label



7.3 Reserved

#### 7.4 Statement of Compliance

This vehicle conforms to US EPA Tier 3 Bin 0 vehicle regulations applicable to 2026 model year new motor vehicles and to California regulations applicable to 2026 model year new ZEV LDV.

## 8. General Technical Description

Please refer to the section of CBI Test Group file

## 9. Reserved

## 10. Reserved

## **11 Starting and Shifting Schedules**

### 11.1 Starting Procedure

Please refer to Section 12 of the FOI common file

## 12 Description of Test Group

### 12. Test Group Description

12.1 Test group name : TTYXV00.0D11

12.2 Engine displacements covered : N/A

12.3 Arrangement and number of cylinders : N/A

12.4 Vehicle class (es) covered : LDV

12.5 Federal emission standards class : Tier3 - Bin0- LDV

12.6 California Emission standards class : ZEV - PC

12.7 Applicable emission standards

Please refer to Certification Summary Information Report in Section 16 CBI common file.

## 13. Reserved

## **14.Request for Certificate**

Test group : TTYXV00.0D11  
Evap/refueling family : N/A

TOYOTA MOTOR CORPORATION requests that EPA/CARB issue a 2026 Model Year certificate of conformity and Executive Order for the above specified test group/evaporative family combination more fully described in this application. This combination complies with the following emission standards:

Federal: Tier3-Bin 0

California: ZEV

This combination meet all applicable regulations contained within 40 CFR Part 85, 86, and 600, within Title 13 of the California Code of Regulation, the application is current as of this date.



---

Kevin Webber  
General Manager  
Regulatory Affairs & Environmental Sustainability  
Toyota Motor North America, Inc.

**15 Other Information**

Fee filing form

**16. Test Result****16.1 Test Vehicle Description**

Vehicle Type	Vehicle ID	Config.	Tests Performed
Certification FEDV	26-XB2E	00	Multi-cycle
		01	Multi-cycle
	26-XZ2E	00	Multi-cycle
		01	Multi-cycle
		02	Multi-cycle

*For the range values and energy consumption rate, please refer to the supplemental sheet and E-Cert.*

## Certification Summary Information Report

<b>Manufacturer</b>	Toyota Motor Corporation	<b>Manufacturer Code</b>	TYX
<b>Test Group</b>	TTYXV00.0D11	<b>Evaporative/Refueling Family</b>	--
<b>Certificate Number</b>	--	<b>CARB Executive Order #</b>	--
<b>Certificate Issue Date</b>	--	<b>Certificate Revision Date</b>	--
<b>Certificate Effective Date</b>	--	<b>Conditional Certificate</b>	--
<b>CSI Revision #</b>	--	<b>CSI Submission/Revision Date</b>	12/03/2025 08:48:40 PM
<b>Model Year</b>	2026		

  
**Test Group Information**

<b>CSI Type</b>	Running Change	<b>Running Change Reference Number</b>	26-TR-21
<b>GHG Exempt Status</b>	Not Exempt		

  
**Drive Sources and Fuel(s)**

**Drive Source #1:** Electric Motor

Fuel	Basic Fuel Metering System	Lean Burn Strategy Indicator
Electricity	--	--

<b>Hybrid Indicator</b>	No		
<b>Multiple Fuel Storage</b>	--	<b>Rechargeable Energy Storage System Indicator</b>	Yes
<b>Multiple Fuel Combustion</b>	--	<b>Off-board Charge Capable Indicator</b>	Yes
<b>Fuel Cell Indicator</b>	No	<b>EPA Vehicle Class</b>	LDV
<b>Federal Clean Fuel Vehicle</b>	No	<b>Federal Clean Fuel Vehicle Standard</b>	--
<b>Federal Clean Fuel Vehicle ILEV</b>	--	<b>California Partial Zero Emissions Vehicle Indicator</b>	--
<b>Durability Group Name</b>	TTYXEEVNNLZZ	<b>Durability Group Equivalency Factor</b>	1.0
<b>Reduced Fee Test Group</b>	No	<b>Certification Region Code(s)</b>	FA, CA
<b>Complies with HD GHG 2b/3 regulations?</b>	No		
<b>Introduction into Commerce Date</b>	09/01/2025	<b>CAP2000 Conditional Certificate?</b>	N/A
<b>Independent Commercial Importer?</b>	--	<b>Alternative Fuel Converter Certificate?</b>	--
<b>SFTP Federal Composite Compliance Identifier</b>	Not Applicable	<b>SFTP Tier 2 Composite CO Option</b>	--
<b>SFTP LEV-III Composite Compliance Indicator</b>	No		
<b>OBD Compliance Type</b>	CARB	<b>OBD Demonstration Vehicle Test Group</b>	TTYXV02.0E4A
<b>Test Group OBD Compliance Level</b>	Full - no deficiencies	<b>Number of Test Group OBD Deficiencies</b>	0
<b>OBD Deficiencies Comments</b>	This vehicle is exempted from OBD requirement because this vehicle is BEV.		
<b>Mfr Test Group Comments</b>	Durability Group Equivalency Factor is not available because this vehicle is BEV.(1.0 is a dummy)		
<b>Mfr Exhaust / Evap Standards Comments</b>	--		

## Certification Summary Information Report

<b>Test Group</b>		TTYXV00.0D11		<b>Evaporative/Refueling Family</b>		--	
<b>Models Covered by this Certificate</b>							
<b>Carline Manufacturer</b>	<b>Division</b>	<b>Carline</b>	<b>Certification Region Code(s)</b>	<b>Drive System</b>	<b>Trans - Type</b>	<b>- # of Gears</b>	<b>Trans - Lockup</b>
Toyota Motor Corporation	2 - LEXUS	36 - ES 350e(21inch Wheels)	California + CAA Section 177 states	2-Wheel Drive, Front	Automatic	1	No
Toyota Motor Corporation	2 - LEXUS	35 - ES 350e(19inch Wheels)	Federal	2-Wheel Drive, Front	Automatic	1	No
Toyota Motor Corporation	2 - LEXUS	35 - ES 350e(19inch Wheels)	California + CAA Section 177 states	2-Wheel Drive, Front	Automatic	1	No
Toyota Motor Corporation	2 - LEXUS	91 - RZ 350e FWD (18 inch Wheels)	Federal	2-Wheel Drive, Front	Automatic	1	No
Toyota Motor Corporation	2 - LEXUS	96 - RZ 350e FWD (20 inch Wheels)	Federal	2-Wheel Drive, Front	Automatic	1	No
Toyota Motor Corporation	2 - LEXUS	96 - RZ 350e FWD (20 inch Wheels)	California + CAA Section 177 states	2-Wheel Drive, Front	Automatic	1	No
Toyota Motor Corporation	2 - LEXUS	36 - ES 350e(21inch Wheels)	Federal	2-Wheel Drive, Front	Automatic	1	No
Toyota Motor Corporation	2 - LEXUS	91 - RZ 350e FWD (18 inch Wheels)	California + CAA Section 177 states	2-Wheel Drive, Front	Automatic	1	No

<b>Engine Description</b>	
<b>Hybrid Type</b>	--
<b>Engine Type</b>	--
<b>Engine Block Arrangement</b>	--
<b>Camless Valvetrain Indicator</b>	--
<b>Number of Cylinders/Rotors</b>	--
<b>Hybrid Description</b>	--
<b>Mfr Engine Description</b>	--
<b>Mfr Engine Block Arrangement Description</b>	--
<b>Oil Viscosity/Classification</b>	--
<b>Mechanically Variable Compression Ratio Indicator</b>	--

<b>After Treatment Device(s) (ATD)</b>	
<b>Mfr After Treatment Device (ATD)</b>	--
<b>Comments</b>	--
<b>Direct Ozone Reduction (DOR) Device</b>	--
<b>Mfr Emission Control Device Comments</b>	--

<b>Official Test Numbers</b>											
<b>Test Group</b>	<b>Fuel</b>	<b>FTP</b>	<b>US06</b>	<b>SC03</b>	<b>Cold CO</b>	<b>Highway</b>	<b>EPA City Litmus Value</b>	<b>EPA City Litmus Threshold</b>	<b>EPA Highway Litmus Value</b>	<b>EPA Highway Litmus Threshold</b>	<b>CREE Weighting Factor</b>
Electricity	--	--	--	--	--	--	--	--	--	--	--

## Certification Summary Information Report

Test Group	TTYXV00.0D11	Evaporative/Refueling Family	--
Hybrid Electric Vehicle And Fuel Cell Information			
Rechargable Energy Storage System	Battery(s)	Rechargable Energy Storage System, if Other	--
Battery Type	Lithium Ion	Number of Battery Packs	1
Total Voltage of Battery Packs	385	Battery Energy Capacity	200
Battery Specific Energy	160	Battery Charger Type	On-Board
Number of Capacitors	--	Capacitor Rating (In Farads)	--
Mfr Capacitor Comments	--		
Hydraulic System Description	--		
Regenerative Braking Type	Electrical Regen Brake		
Regenerative Braking Source	Front Wheels	Driver Controlled Regenerative Braking	Yes
Mfr Regenerative Braking Description	--		
Drive Motor(s)/Generator(s)	1		
Motor/Generator Type 1	AC Synchronous	Rated Motor/Generator Power	167
Mfr Fuel Cell Description	--		
Fuel Cell On-Board H2 Storage Capacity (kg)	--	Usable H2 Fill Capacity (kg)	--
Mfr Hybrid Electric/ Electric Vehicle Comments	--		

Test Group	TTYXV00.0D11	Evaporative/Refueling Family	--
------------	--------------	------------------------------	----

Emission Data Vehicle Information

Vehicle ID / Configuration	26-XB2E / 0	Manufacturer Vehicle Configuration Number	0
Original Test Group Name	TTYXV00.0D11	Original Evaporative/Refueling Family	--
Original Test Vehicle Model Year	2026		

Vehicle Model

Represented Test Vehicle Make	LEXUS	Represented Test Vehicle Model	RZ 350e
-------------------------------	-------	--------------------------------	---------

Leak Family Details

Leak Family Identifier	--	Leak Family Name	--
------------------------	----	------------------	----

Drive Sources and Fuel System Details

Drive Source and Fuel#	Drive Source	Fuel
1	Electric Motor	Electricity

Hybrid Indicator	No	Multiple Fuel Combustion	--
Multiple Fuel Storage	--	Rechargeable Energy Storage System Indicator	Yes
Fuel Cell Indicator	No	Rechargeable Energy Storage System, if 'Other'	--
Rechargeable Energy Storage System	Battery(s)		
Off-board charge Capable Indicator	Yes		
Odometer Correction -- Initial	0	Odometer Correction Factor	1
Odometer Correction Sign	- = System Miles is equal to (Test odometer reading - Initial system miles) * Correction factor		
Odometer Correction Units	Miles		
Engine Code	01	Rated Horsepower	86
Displacement (liters)	0.001		
Air Aspiration Method	Naturally Aspirated	Air Aspiration Method, if 'Other'	
Number of Air Aspiration Devices	--	Air Aspiration Device Configuration	--
Charge Air Cooler Type	N/A	Drive Mode While Testing	2-Wheel Drive, Front
Shift Indicator Light Usage	Not equipped	Aged Emission Components	4,000 (mi)
Curb Weight (lbs)	4385	Equivalent Test Weight (pounds)	4750
GVWR (lbs)	--	N/V Ratio	0
Axle Ratio	0		
Transmission Type	Automatic	# of Transmission Gears	1
Transmission Lockup	No	Creeper Gear	No

Dynamometer Coefficients:

Target Coefficients			Set Coefficients			EPA Calculated Total Road Load Horse Power for City/Highway/Evap Coefficients	
Coefficient Category	A (lbf)	B (lbf/mph)	C (lbf/mph**2)	A (lbf)	B (lbf/mph)	C (lbf/mph**2)	
City/Highway/Evap	26.273	0.29064	0.0159	12.942	0.03399	0.018342	10.7

Emission Control Device Comments

--

## Certification Summary Information Report

Test Group	TTYXV00.0D11	Evaporative/Refueling Family	--
Manufacturer Test Vehicle Comments	Drive mode is Normal.Axle Ratio Value is 12.36.		

## Certification Summary Information Report

Test Group	TTYXV00.0D11	Evaporative/Refueling Family	--
Test #	TTYX10090167	Test Procedure	77 - Multi-Cycle Test (MCT)
Exhaust Test # for this Evap Test	--	Test Fuel Type	62 - Electricity
Test Date	03/18/2025	Fuel	N/A
Fuel Batch ID	--	Fuel Calibration Number	--
Vehicle Class	N/A	DF Type	Mfr. Determined
Verify Test Lab ID	Toyota Motor Corporation		
E10 Evaporative Test Measurement Method	--		
Test Start Odometer Reading	2505	Odometer Units	M
4WD Test Dyno	No	Diesel Adjustment Factor Usage	--
State of Charge Delta	No		
Drive Cycle Speed Tolerance Criteria	Used Part 1066 (+/- 2.0 mph, +/- 1.0 sec)	Road Speed Fan Usage	Yes
PHEV/EV Charge Depleting Test Information			
Recharge Event Voltage	240	Recharge Event Energy (kiloWatt-hours)	80.953
Charge Depleting Range (Calculated miles)	455.677	Charge Depleting Range (Actual miles)	455.677
Charge Depleting Range Highway (Calculated miles)	389.035	Derived 5-Cycle Coefficient Model Year	--
All Electric Range Unadjusted (miles)	--	Equivalent All Electric Range (miles)	455.677
Number of Charge Depleting Bags/Phases Conducted	8	Transition Bag/Phase Number	--
Charge Depleting Bag/Phase #1			
Test Result/Emission Name		Unrounded Test Result	
Actual Distance Driven (miles)		7.4432401	
Carbon-Related Exhaust Emissions		0	
Drive Trace Absolute Speed Change Rating		0.1	
Drive Trace Energy Economy Rating		-0.33	
Drive Trace Inertia Work Ratio Rating		0.37	
Integrated DC KW-HRS		1.2631286	
Manufacturer Fuel Economy		16.9701442	
Charge Depleting Bag/Phase #2			

## Certification Summary Information Report

Test Group	TTYXV00.0D11	Evaporative/Refueling Family	--																
<table><tr><th>Test Result/Emission Name</th><th>Unrounded Test Result</th></tr><tr><td>Actual Distance Driven (miles)</td><td>10.2553221</td></tr><tr><td>Carbon-Related Exhaust Emissions</td><td>0</td></tr><tr><td>Drive Trace Absolute Speed Change Rating</td><td>1.58</td></tr><tr><td>Drive Trace Energy Economy Rating</td><td>-0.12</td></tr><tr><td>Drive Trace Inertia Work Ratio Rating</td><td>2.18</td></tr><tr><td>Integrated DC KW-HRS</td><td>1.9460564</td></tr><tr><td>Manufacturer Fuel Economy</td><td>18.9760629</td></tr></table>				Test Result/Emission Name	Unrounded Test Result	Actual Distance Driven (miles)	10.2553221	Carbon-Related Exhaust Emissions	0	Drive Trace Absolute Speed Change Rating	1.58	Drive Trace Energy Economy Rating	-0.12	Drive Trace Inertia Work Ratio Rating	2.18	Integrated DC KW-HRS	1.9460564	Manufacturer Fuel Economy	18.9760629
Test Result/Emission Name	Unrounded Test Result																		
Actual Distance Driven (miles)	10.2553221																		
Carbon-Related Exhaust Emissions	0																		
Drive Trace Absolute Speed Change Rating	1.58																		
Drive Trace Energy Economy Rating	-0.12																		
Drive Trace Inertia Work Ratio Rating	2.18																		
Integrated DC KW-HRS	1.9460564																		
Manufacturer Fuel Economy	18.9760629																		
Charge Depleting Bag/Phase #3																			
<table><tr><th>Test Result/Emission Name</th><th>Unrounded Test Result</th></tr><tr><td>Actual Distance Driven (miles)</td><td>7.4453026</td></tr><tr><td>Carbon-Related Exhaust Emissions</td><td>0</td></tr><tr><td>Drive Trace Absolute Speed Change Rating</td><td>0.08</td></tr><tr><td>Drive Trace Energy Economy Rating</td><td>-0.31</td></tr><tr><td>Drive Trace Inertia Work Ratio Rating</td><td>0.16</td></tr><tr><td>Integrated DC KW-HRS</td><td>1.2057438</td></tr><tr><td>Manufacturer Fuel Economy</td><td>16.1946919</td></tr></table>				Test Result/Emission Name	Unrounded Test Result	Actual Distance Driven (miles)	7.4453026	Carbon-Related Exhaust Emissions	0	Drive Trace Absolute Speed Change Rating	0.08	Drive Trace Energy Economy Rating	-0.31	Drive Trace Inertia Work Ratio Rating	0.16	Integrated DC KW-HRS	1.2057438	Manufacturer Fuel Economy	16.1946919
Test Result/Emission Name	Unrounded Test Result																		
Actual Distance Driven (miles)	7.4453026																		
Carbon-Related Exhaust Emissions	0																		
Drive Trace Absolute Speed Change Rating	0.08																		
Drive Trace Energy Economy Rating	-0.31																		
Drive Trace Inertia Work Ratio Rating	0.16																		
Integrated DC KW-HRS	1.2057438																		
Manufacturer Fuel Economy	16.1946919																		
Charge Depleting Bag/Phase #4																			
<table><tr><th>Test Result/Emission Name</th><th>Unrounded Test Result</th></tr><tr><td>Actual Distance Driven (miles)</td><td>227.6013782</td></tr><tr><td>Carbon-Related Exhaust Emissions</td><td>0</td></tr><tr><td>Drive Trace Absolute Speed Change Rating</td><td>0</td></tr><tr><td>Drive Trace Energy Economy Rating</td><td>0</td></tr><tr><td>Drive Trace Inertia Work Ratio Rating</td><td>0</td></tr><tr><td>Integrated DC KW-HRS</td><td>55.9358075</td></tr><tr><td>Manufacturer Fuel Economy</td><td>24.5762165</td></tr></table>				Test Result/Emission Name	Unrounded Test Result	Actual Distance Driven (miles)	227.6013782	Carbon-Related Exhaust Emissions	0	Drive Trace Absolute Speed Change Rating	0	Drive Trace Energy Economy Rating	0	Drive Trace Inertia Work Ratio Rating	0	Integrated DC KW-HRS	55.9358075	Manufacturer Fuel Economy	24.5762165
Test Result/Emission Name	Unrounded Test Result																		
Actual Distance Driven (miles)	227.6013782																		
Carbon-Related Exhaust Emissions	0																		
Drive Trace Absolute Speed Change Rating	0																		
Drive Trace Energy Economy Rating	0																		
Drive Trace Inertia Work Ratio Rating	0																		
Integrated DC KW-HRS	55.9358075																		
Manufacturer Fuel Economy	24.5762165																		
Charge Depleting Bag/Phase #5																			
<table><tr><th>Test Result/Emission Name</th><th>Unrounded Test Result</th></tr><tr><td>Actual Distance Driven (miles)</td><td>7.4470294</td></tr><tr><td>Carbon-Related Exhaust Emissions</td><td>0</td></tr><tr><td>Drive Trace Absolute Speed Change Rating</td><td>0.29</td></tr><tr><td>Drive Trace Energy Economy Rating</td><td>-0.13</td></tr><tr><td>Drive Trace Inertia Work Ratio Rating</td><td>0.6</td></tr><tr><td>Integrated DC KW-HRS</td><td>1.170636</td></tr><tr><td>Manufacturer Fuel Economy</td><td>15.7195034</td></tr></table>				Test Result/Emission Name	Unrounded Test Result	Actual Distance Driven (miles)	7.4470294	Carbon-Related Exhaust Emissions	0	Drive Trace Absolute Speed Change Rating	0.29	Drive Trace Energy Economy Rating	-0.13	Drive Trace Inertia Work Ratio Rating	0.6	Integrated DC KW-HRS	1.170636	Manufacturer Fuel Economy	15.7195034
Test Result/Emission Name	Unrounded Test Result																		
Actual Distance Driven (miles)	7.4470294																		
Carbon-Related Exhaust Emissions	0																		
Drive Trace Absolute Speed Change Rating	0.29																		
Drive Trace Energy Economy Rating	-0.13																		
Drive Trace Inertia Work Ratio Rating	0.6																		
Integrated DC KW-HRS	1.170636																		
Manufacturer Fuel Economy	15.7195034																		
Charge Depleting Bag/Phase #6																			

## Certification Summary Information Report

Test Group	TTYXV00.0D11	Evaporative/Refueling Family	--																
<table><tr><th>Test Result/Emission Name</th><th>Unrounded Test Result</th></tr><tr><td>Actual Distance Driven (miles)</td><td>10.2581304</td></tr><tr><td>Carbon-Related Exhaust Emissions</td><td>0</td></tr><tr><td>Drive Trace Absolute Speed Change Rating</td><td>1.53</td></tr><tr><td>Drive Trace Energy Economy Rating</td><td>0.02</td></tr><tr><td>Drive Trace Inertia Work Ratio Rating</td><td>2.01</td></tr><tr><td>Integrated DC KW-HRS</td><td>1.8957919</td></tr><tr><td>Manufacturer Fuel Economy</td><td>18.4808711</td></tr></table>		Test Result/Emission Name	Unrounded Test Result	Actual Distance Driven (miles)	10.2581304	Carbon-Related Exhaust Emissions	0	Drive Trace Absolute Speed Change Rating	1.53	Drive Trace Energy Economy Rating	0.02	Drive Trace Inertia Work Ratio Rating	2.01	Integrated DC KW-HRS	1.8957919	Manufacturer Fuel Economy	18.4808711		
Test Result/Emission Name	Unrounded Test Result																		
Actual Distance Driven (miles)	10.2581304																		
Carbon-Related Exhaust Emissions	0																		
Drive Trace Absolute Speed Change Rating	1.53																		
Drive Trace Energy Economy Rating	0.02																		
Drive Trace Inertia Work Ratio Rating	2.01																		
Integrated DC KW-HRS	1.8957919																		
Manufacturer Fuel Economy	18.4808711																		
Charge Depleting Bag/Phase #7																			
<table><tr><th>Test Result/Emission Name</th><th>Unrounded Test Result</th></tr><tr><td>Actual Distance Driven (miles)</td><td>7.4504237</td></tr><tr><td>Carbon-Related Exhaust Emissions</td><td>0</td></tr><tr><td>Drive Trace Absolute Speed Change Rating</td><td>0.32</td></tr><tr><td>Drive Trace Energy Economy Rating</td><td>-0.06</td></tr><tr><td>Drive Trace Inertia Work Ratio Rating</td><td>0.45</td></tr><tr><td>Integrated DC KW-HRS</td><td>1.1922431</td></tr><tr><td>Manufacturer Fuel Economy</td><td>16.0023534</td></tr></table>		Test Result/Emission Name	Unrounded Test Result	Actual Distance Driven (miles)	7.4504237	Carbon-Related Exhaust Emissions	0	Drive Trace Absolute Speed Change Rating	0.32	Drive Trace Energy Economy Rating	-0.06	Drive Trace Inertia Work Ratio Rating	0.45	Integrated DC KW-HRS	1.1922431	Manufacturer Fuel Economy	16.0023534		
Test Result/Emission Name	Unrounded Test Result																		
Actual Distance Driven (miles)	7.4504237																		
Carbon-Related Exhaust Emissions	0																		
Drive Trace Absolute Speed Change Rating	0.32																		
Drive Trace Energy Economy Rating	-0.06																		
Drive Trace Inertia Work Ratio Rating	0.45																		
Integrated DC KW-HRS	1.1922431																		
Manufacturer Fuel Economy	16.0023534																		
Charge Depleting Bag/Phase #8																			
<table><tr><th>Test Result/Emission Name</th><th>Unrounded Test Result</th></tr><tr><td>Actual Distance Driven (miles)</td><td>33.2989265</td></tr><tr><td>Carbon-Related Exhaust Emissions</td><td>0</td></tr><tr><td>Drive Trace Absolute Speed Change Rating</td><td>0</td></tr><tr><td>Drive Trace Energy Economy Rating</td><td>0</td></tr><tr><td>Drive Trace Inertia Work Ratio Rating</td><td>0</td></tr><tr><td>Integrated DC KW-HRS</td><td>8.2509254</td></tr><tr><td>Manufacturer Fuel Economy</td><td>24.7783525</td></tr></table>		Test Result/Emission Name	Unrounded Test Result	Actual Distance Driven (miles)	33.2989265	Carbon-Related Exhaust Emissions	0	Drive Trace Absolute Speed Change Rating	0	Drive Trace Energy Economy Rating	0	Drive Trace Inertia Work Ratio Rating	0	Integrated DC KW-HRS	8.2509254	Manufacturer Fuel Economy	24.7783525		
Test Result/Emission Name	Unrounded Test Result																		
Actual Distance Driven (miles)	33.2989265																		
Carbon-Related Exhaust Emissions	0																		
Drive Trace Absolute Speed Change Rating	0																		
Drive Trace Energy Economy Rating	0																		
Drive Trace Inertia Work Ratio Rating	0																		
Integrated DC KW-HRS	8.2509254																		
Manufacturer Fuel Economy	24.7783525																		
Manufacturer Test Comments																			
--																			

## Certification Summary Information Report

<b>Test Group</b>	TTYXV00.0D11		<b>Evaporative/Refueling Family</b>	--						
<b>Emission Data Vehicle Information</b>										
<b>Vehicle ID / Configuration</b>	26-XB2E / 1		<b>Manufacturer Vehicle Configuration Number</b>	1						
<b>Original Test Group Name</b>	TTYXV00.0D11		<b>Original Evaporative/Refueling Family</b>	--						
<b>Original Test Vehicle Model Year</b>	2026									
<b>Vehicle Model</b>										
<b>Represented Test Vehicle Make</b>	LEXUS		<b>Represented Test Vehicle Model</b>	RZ 350e						
<b>Leak Family Details</b>										
<b>Leak Family Identifier</b>	--		<b>Leak Family Name</b>	--						
<b>Drive Sources and Fuel System Details</b>										
	<table border="1"> <tr> <th>Drive Source and Fuel#</th> <th>Drive Source</th> <th>Fuel</th> </tr> <tr> <td>1</td> <td>Electric Motor</td> <td>Electricity</td> </tr> </table>		Drive Source and Fuel#	Drive Source	Fuel	1	Electric Motor	Electricity		
Drive Source and Fuel#	Drive Source	Fuel								
1	Electric Motor	Electricity								
<b>Hybrid Indicator</b>	No		<b>Multiple Fuel Combustion</b>	--						
<b>Multiple Fuel Storage</b>	--		<b>Rechargeable Energy Storage System Indicator</b>	Yes						
<b>Fuel Cell Indicator</b>	No		<b>Rechargeable Energy Storage System, if 'Other'</b>	--						
<b>Rechargeable Energy Storage System</b>	Battery(s)									
<b>Off-board charge Capable Indicator</b>	Yes									
<b>Odometer Correction -- Initial</b>	0		<b>Odometer Correction Factor</b>	1						
<b>Odometer Correction Sign</b>	- = System Miles is equal to (Test odometer reading - Initial system miles) * Correction factor									
<b>Odometer Correction Units</b>	Miles									
<b>Engine Code</b>	01		<b>Rated Horsepower</b>	86						
<b>Displacement (liters)</b>	0.001									
<b>Air Aspiration Method</b>	Naturally Aspirated		<b>Air Aspiration Method, if 'Other'</b>							
<b>Number of Air Aspiration Devices</b>	--		<b>Air Aspiration Device Configuration</b>	--						
<b>Charge Air Cooler Type</b>	N/A		<b>Drive Mode While Testing</b>	2-Wheel Drive, Front						
<b>Shift Indicator Light Usage</b>	Not equipped		<b>Aged Emission Components</b>	4,000 (mi)						
<b>Curb Weight (lbs)</b>	4415		<b>Equivalent Test Weight (pounds)</b>	4750						
<b>GVWR (lbs)</b>	--		<b>N/V Ratio</b>	0						
<b>Axle Ratio</b>	0									
<b>Transmission Type</b>	Automatic		<b># of Transmission Gears</b>	1						
<b>Transmission Lockup</b>	No		<b>Creep Gear</b>	No						
<b>Dynamometer Coefficients:</b>										
	<b>Target Coefficients</b>			<b>Set Coefficients</b>						
<b>Coefficient Category</b>	<b>A (lbf)</b>	<b>B (lbf/mph)</b>	<b>C (lbf/mph**2)</b>	<b>EPA Calculated Total Road Load Horse Power for City/Highway/Evap Coefficients</b>						
<b>City/Highway/Evap</b>	28.735	0.28054	0.016145	11.1						
<b>Emission Control Device Comments</b>	--									

## Certification Summary Information Report

Test Group	TTYXV00.0D11	Evaporative/Refueling Family	--
Manufacturer Test Vehicle Comments	Drive mode is Normal.Axle Ratio Value is 12.36.		

## Certification Summary Information Report

<b>Test Group</b>	TTYXV00.0D11	<b>Evaporative/Refueling Family</b>	--
<b>Test #</b>	<b>TTYX10090168</b>	<b>Test Procedure</b>	<b>77 - Multi-Cycle Test (MCT)</b>
<b>Exhaust Test # for this Evap Test</b>	--	<b>Test Fuel Type</b>	62 - Electricity
<b>Test Date</b>	03/11/2025	<b>Fuel</b>	N/A
<b>Fuel Batch ID</b>	--	<b>Fuel Calibration Number</b>	--
<b>Vehicle Class</b>	N/A	<b>DF Type</b>	Mfr. Determined
<b>Verify Test Lab ID</b>	Toyota Motor Corporation		
<b>E10 Evaporative Test Measurement Method</b>	--		
<b>Test Start Odometer Reading</b>	2028	<b>Odometer Units</b>	M
<b>4WD Test Dyno</b>	No	<b>Diesel Adjustment Factor Usage</b>	--
<b>State of Charge Delta</b>	No		
<b>Drive Cycle Speed Tolerance Criteria</b>	Used Part 1066 (+/- 2.0 mph, +/- 1.0 sec)	<b>Road Speed Fan Usage</b>	Yes
<b>PHEV/EV Charge Depleting Test Information</b>			
<b>Recharge Event Voltage</b>	240	<b>Recharge Event Energy (kiloWatt-hours)</b>	81.061
<b>Charge Depleting Range (Calculated miles)</b>	437.294	<b>Charge Depleting Range (Actual miles)</b>	437.294
<b>Charge Depleting Range Highway (Calculated miles)</b>	375.079	<b>Derived 5-Cycle Coefficient Model Year</b>	--
<b>All Electric Range Unadjusted (miles)</b>	--	<b>Equivalent All Electric Range (miles)</b>	437.294
<b>Number of Charge Depleting Bags/Phases Conducted</b>	8	<b>Transition Bag/Phase Number</b>	--
<b>Charge Depleting Bag/Phase #1</b>			
<b>Test Result/Emission Name</b>		<b>Unrounded Test Result</b>	
Actual Distance Driven (miles)		7.4450021	
Carbon-Related Exhaust Emissions		0	
Drive Trace Absolute Speed Change Rating		0.48	
Drive Trace Energy Economy Rating		0.1	
Drive Trace Inertia Work Ratio Rating		0.83	
Integrated DC KW-HRS		1.3209296	
Manufacturer Fuel Economy		17.742501	
<b>Charge Depleting Bag/Phase #2</b>			

## Certification Summary Information Report

Test Group	TTYXV00.0D11	Evaporative/Refueling Family	--																
	<table><tr><th>Test Result/Emission Name</th><th>Unrounded Test Result</th></tr><tr><td>Actual Distance Driven (miles)</td><td>10.2541174</td></tr><tr><td>Carbon-Related Exhaust Emissions</td><td>0</td></tr><tr><td>Drive Trace Absolute Speed Change Rating</td><td>1.6</td></tr><tr><td>Drive Trace Energy Economy Rating</td><td>0.22</td></tr><tr><td>Drive Trace Inertia Work Ratio Rating</td><td>2.03</td></tr><tr><td>Integrated DC KW-HRS</td><td>2.0187395</td></tr><tr><td>Manufacturer Fuel Economy</td><td>19.6871109</td></tr></table>	Test Result/Emission Name	Unrounded Test Result	Actual Distance Driven (miles)	10.2541174	Carbon-Related Exhaust Emissions	0	Drive Trace Absolute Speed Change Rating	1.6	Drive Trace Energy Economy Rating	0.22	Drive Trace Inertia Work Ratio Rating	2.03	Integrated DC KW-HRS	2.0187395	Manufacturer Fuel Economy	19.6871109		
Test Result/Emission Name	Unrounded Test Result																		
Actual Distance Driven (miles)	10.2541174																		
Carbon-Related Exhaust Emissions	0																		
Drive Trace Absolute Speed Change Rating	1.6																		
Drive Trace Energy Economy Rating	0.22																		
Drive Trace Inertia Work Ratio Rating	2.03																		
Integrated DC KW-HRS	2.0187395																		
Manufacturer Fuel Economy	19.6871109																		
Charge Depleting Bag/Phase #3																			
	<table><tr><th>Test Result/Emission Name</th><th>Unrounded Test Result</th></tr><tr><td>Actual Distance Driven (miles)</td><td>7.4465826</td></tr><tr><td>Carbon-Related Exhaust Emissions</td><td>0</td></tr><tr><td>Drive Trace Absolute Speed Change Rating</td><td>0.43</td></tr><tr><td>Drive Trace Energy Economy Rating</td><td>0.04</td></tr><tr><td>Drive Trace Inertia Work Ratio Rating</td><td>0.84</td></tr><tr><td>Integrated DC KW-HRS</td><td>1.2527272</td></tr><tr><td>Manufacturer Fuel Economy</td><td>16.8228477</td></tr></table>	Test Result/Emission Name	Unrounded Test Result	Actual Distance Driven (miles)	7.4465826	Carbon-Related Exhaust Emissions	0	Drive Trace Absolute Speed Change Rating	0.43	Drive Trace Energy Economy Rating	0.04	Drive Trace Inertia Work Ratio Rating	0.84	Integrated DC KW-HRS	1.2527272	Manufacturer Fuel Economy	16.8228477		
Test Result/Emission Name	Unrounded Test Result																		
Actual Distance Driven (miles)	7.4465826																		
Carbon-Related Exhaust Emissions	0																		
Drive Trace Absolute Speed Change Rating	0.43																		
Drive Trace Energy Economy Rating	0.04																		
Drive Trace Inertia Work Ratio Rating	0.84																		
Integrated DC KW-HRS	1.2527272																		
Manufacturer Fuel Economy	16.8228477																		
Charge Depleting Bag/Phase #4																			
	<table><tr><th>Test Result/Emission Name</th><th>Unrounded Test Result</th></tr><tr><td>Actual Distance Driven (miles)</td><td>220.5005596</td></tr><tr><td>Carbon-Related Exhaust Emissions</td><td>0</td></tr><tr><td>Drive Trace Absolute Speed Change Rating</td><td>0</td></tr><tr><td>Drive Trace Energy Economy Rating</td><td>0</td></tr><tr><td>Drive Trace Inertia Work Ratio Rating</td><td>0</td></tr><tr><td>Integrated DC KW-HRS</td><td>56.0589219</td></tr><tr><td>Manufacturer Fuel Economy</td><td>25.4234828</td></tr></table>	Test Result/Emission Name	Unrounded Test Result	Actual Distance Driven (miles)	220.5005596	Carbon-Related Exhaust Emissions	0	Drive Trace Absolute Speed Change Rating	0	Drive Trace Energy Economy Rating	0	Drive Trace Inertia Work Ratio Rating	0	Integrated DC KW-HRS	56.0589219	Manufacturer Fuel Economy	25.4234828		
Test Result/Emission Name	Unrounded Test Result																		
Actual Distance Driven (miles)	220.5005596																		
Carbon-Related Exhaust Emissions	0																		
Drive Trace Absolute Speed Change Rating	0																		
Drive Trace Energy Economy Rating	0																		
Drive Trace Inertia Work Ratio Rating	0																		
Integrated DC KW-HRS	56.0589219																		
Manufacturer Fuel Economy	25.4234828																		
Charge Depleting Bag/Phase #5																			
	<table><tr><th>Test Result/Emission Name</th><th>Unrounded Test Result</th></tr><tr><td>Actual Distance Driven (miles)</td><td>7.4436919</td></tr><tr><td>Carbon-Related Exhaust Emissions</td><td>0</td></tr><tr><td>Drive Trace Absolute Speed Change Rating</td><td>0.22</td></tr><tr><td>Drive Trace Energy Economy Rating</td><td>-0.2</td></tr><tr><td>Drive Trace Inertia Work Ratio Rating</td><td>0.16</td></tr><tr><td>Integrated DC KW-HRS</td><td>1.2367075</td></tr><tr><td>Manufacturer Fuel Economy</td><td>16.6141678</td></tr></table>	Test Result/Emission Name	Unrounded Test Result	Actual Distance Driven (miles)	7.4436919	Carbon-Related Exhaust Emissions	0	Drive Trace Absolute Speed Change Rating	0.22	Drive Trace Energy Economy Rating	-0.2	Drive Trace Inertia Work Ratio Rating	0.16	Integrated DC KW-HRS	1.2367075	Manufacturer Fuel Economy	16.6141678		
Test Result/Emission Name	Unrounded Test Result																		
Actual Distance Driven (miles)	7.4436919																		
Carbon-Related Exhaust Emissions	0																		
Drive Trace Absolute Speed Change Rating	0.22																		
Drive Trace Energy Economy Rating	-0.2																		
Drive Trace Inertia Work Ratio Rating	0.16																		
Integrated DC KW-HRS	1.2367075																		
Manufacturer Fuel Economy	16.6141678																		
Charge Depleting Bag/Phase #6																			

## Certification Summary Information Report

Test Group	TTYXV00.0D11	Evaporative/Refueling Family	--																
<table><tr><th>Test Result/Emission Name</th><th>Unrounded Test Result</th></tr><tr><td>Actual Distance Driven (miles)</td><td>10.2533707</td></tr><tr><td>Carbon-Related Exhaust Emissions</td><td>0</td></tr><tr><td>Drive Trace Absolute Speed Change Rating</td><td>0.99</td></tr><tr><td>Drive Trace Energy Economy Rating</td><td>-0.32</td></tr><tr><td>Drive Trace Inertia Work Ratio Rating</td><td>1.31</td></tr><tr><td>Integrated DC KW-HRS</td><td>1.9638456</td></tr><tr><td>Manufacturer Fuel Economy</td><td>19.1531707</td></tr></table>		Test Result/Emission Name	Unrounded Test Result	Actual Distance Driven (miles)	10.2533707	Carbon-Related Exhaust Emissions	0	Drive Trace Absolute Speed Change Rating	0.99	Drive Trace Energy Economy Rating	-0.32	Drive Trace Inertia Work Ratio Rating	1.31	Integrated DC KW-HRS	1.9638456	Manufacturer Fuel Economy	19.1531707		
Test Result/Emission Name	Unrounded Test Result																		
Actual Distance Driven (miles)	10.2533707																		
Carbon-Related Exhaust Emissions	0																		
Drive Trace Absolute Speed Change Rating	0.99																		
Drive Trace Energy Economy Rating	-0.32																		
Drive Trace Inertia Work Ratio Rating	1.31																		
Integrated DC KW-HRS	1.9638456																		
Manufacturer Fuel Economy	19.1531707																		
Charge Depleting Bag/Phase #7																			
<table><tr><th>Test Result/Emission Name</th><th>Unrounded Test Result</th></tr><tr><td>Actual Distance Driven (miles)</td><td>7.4432558</td></tr><tr><td>Carbon-Related Exhaust Emissions</td><td>0</td></tr><tr><td>Drive Trace Absolute Speed Change Rating</td><td>0.22</td></tr><tr><td>Drive Trace Energy Economy Rating</td><td>-0.2</td></tr><tr><td>Drive Trace Inertia Work Ratio Rating</td><td>0.42</td></tr><tr><td>Integrated DC KW-HRS</td><td>1.2262315</td></tr><tr><td>Manufacturer Fuel Economy</td><td>16.4743973</td></tr></table>		Test Result/Emission Name	Unrounded Test Result	Actual Distance Driven (miles)	7.4432558	Carbon-Related Exhaust Emissions	0	Drive Trace Absolute Speed Change Rating	0.22	Drive Trace Energy Economy Rating	-0.2	Drive Trace Inertia Work Ratio Rating	0.42	Integrated DC KW-HRS	1.2262315	Manufacturer Fuel Economy	16.4743973		
Test Result/Emission Name	Unrounded Test Result																		
Actual Distance Driven (miles)	7.4432558																		
Carbon-Related Exhaust Emissions	0																		
Drive Trace Absolute Speed Change Rating	0.22																		
Drive Trace Energy Economy Rating	-0.2																		
Drive Trace Inertia Work Ratio Rating	0.42																		
Integrated DC KW-HRS	1.2262315																		
Manufacturer Fuel Economy	16.4743973																		
Charge Depleting Bag/Phase #8																			
<table><tr><th>Test Result/Emission Name</th><th>Unrounded Test Result</th></tr><tr><td>Actual Distance Driven (miles)</td><td>30.5068452</td></tr><tr><td>Carbon-Related Exhaust Emissions</td><td>0</td></tr><tr><td>Drive Trace Absolute Speed Change Rating</td><td>0</td></tr><tr><td>Drive Trace Energy Economy Rating</td><td>0</td></tr><tr><td>Drive Trace Inertia Work Ratio Rating</td><td>0</td></tr><tr><td>Integrated DC KW-HRS</td><td>7.7627737</td></tr><tr><td>Manufacturer Fuel Economy</td><td>25.4460062</td></tr></table>		Test Result/Emission Name	Unrounded Test Result	Actual Distance Driven (miles)	30.5068452	Carbon-Related Exhaust Emissions	0	Drive Trace Absolute Speed Change Rating	0	Drive Trace Energy Economy Rating	0	Drive Trace Inertia Work Ratio Rating	0	Integrated DC KW-HRS	7.7627737	Manufacturer Fuel Economy	25.4460062		
Test Result/Emission Name	Unrounded Test Result																		
Actual Distance Driven (miles)	30.5068452																		
Carbon-Related Exhaust Emissions	0																		
Drive Trace Absolute Speed Change Rating	0																		
Drive Trace Energy Economy Rating	0																		
Drive Trace Inertia Work Ratio Rating	0																		
Integrated DC KW-HRS	7.7627737																		
Manufacturer Fuel Economy	25.4460062																		
Manufacturer Test Comments																			
		--																	

Test Group	TTYXV00.0D11	Evaporative/Refueling Family	--
------------	--------------	------------------------------	----

Emission Data Vehicle Information

Vehicle ID / Configuration	26-XZ2E / 0	Manufacturer Vehicle Configuration Number	0
Original Test Group Name	TTYXV00.0D11	Original Evaporative/Refueling Family	--
Original Test Vehicle Model Year	2026		

Vehicle Model

Represented Test Vehicle Make	LEXUS	Represented Test Vehicle Model	ES 350e (19inch Wheels)
-------------------------------	-------	--------------------------------	-------------------------

Leak Family Details

Leak Family Identifier	--	Leak Family Name	--
------------------------	----	------------------	----

Drive Sources and Fuel System Details

Drive Source and Fuel#	Drive Source	Fuel
1	Electric Motor	Electricity

Hybrid Indicator	No	Multiple Fuel Combustion	--
Multiple Fuel Storage	--	Rechargeable Energy Storage System Indicator	Yes
Fuel Cell Indicator	No	Rechargeable Energy Storage System, if 'Other'	--
Rechargeable Energy Storage System	Battery(s)		
Off-board charge Capable Indicator	Yes		
Odometer Correction -- Initial	0	Odometer Correction Factor	1
Odometer Correction Sign	- = System Miles is equal to (Test odometer reading - Initial system miles) * Correction factor		
Odometer Correction Units	Miles		
Engine Code	02	Rated Horsepower	86
Displacement (liters)	0.001		
Air Aspiration Method	Naturally Aspirated	Air Aspiration Method, if 'Other'	
Number of Air Aspiration Devices	--	Air Aspiration Device Configuration	--
Charge Air Cooler Type	N/A	Drive Mode While Testing	4-Wheel Drive
Shift Indicator Light Usage	Not equipped	Aged Emission Components	4,000 (mi)
Curb Weight (lbs)	4730	Equivalent Test Weight (pounds)	5000
GVWR (lbs)	--	N/V Ratio	0
Axle Ratio	0		
Transmission Type	Automatic	# of Transmission Gears	1
Transmission Lockup	No	Creeper Gear	No

Dynamometer Coefficients:

Target Coefficients			Set Coefficients			EPA Calculated Total Road Load Horse Power for City/Highway/Evap Coefficients	
Coefficient Category	A (lbf)	B (lbf/mph)	C (lbf/mph**2)	A (lbf)	B (lbf/mph)	C (lbf/mph**2)	
City/Highway/Evap	26.275	0.2672	0.01466	9.266	0.03493	0.016757	10.2

Emission Control Device Comments

--

Certification Summary Information Report

Test Group	TTYXV00.0D11	Evaporative/Refueling Family	--
Manufacturer Test Vehicle Comments	--		

## Certification Summary Information Report

<b>Test Group</b>	TTYXV00.0D11	<b>Evaporative/Refueling Family</b>	--
<b>Test #</b>	<b>TTYX10092240</b>	<b>Test Procedure</b>	<b>77 - Multi-Cycle Test (MCT)</b>
<b>Exhaust Test # for this Evap Test</b>	--	<b>Test Fuel Type</b>	62 - Electricity
<b>Test Date</b>	08/26/2025	<b>Fuel</b>	N/A
<b>Fuel Batch ID</b>	--	<b>Fuel Calibration Number</b>	--
<b>Vehicle Class</b>	N/A	<b>DF Type</b>	Mfr. Determined
<b>Verify Test Lab ID</b>	Toyota Motor Corporation		
<b>E10 Evaporative Test Measurement Method</b>	--		
<b>Test Start Odometer Reading</b>	2028	<b>Odometer Units</b>	M
<b>4WD Test Dyno</b>	No	<b>Diesel Adjustment Factor Usage</b>	--
<b>State of Charge Delta</b>	No		
<b>Drive Cycle Speed Tolerance Criteria</b>	Used Part 1066 (+/- 2.0 mph, +/- 1.0 sec)	<b>Road Speed Fan Usage</b>	Yes
<b>PHEV/EV Charge Depleting Test Information</b>			
<b>Recharge Event Voltage</b>	240	<b>Recharge Event Energy (kiloWatt-hours)</b>	80.4782
<b>Charge Depleting Range (Calculated miles)</b>	469.431	<b>Charge Depleting Range (Actual miles)</b>	469.431
<b>Charge Depleting Range Highway (Calculated miles)</b>	406.373	<b>Derived 5-Cycle Coefficient Model Year</b>	--
<b>All Electric Range Unadjusted (miles)</b>	--	<b>Equivalent All Electric Range (miles)</b>	469.431
<b>Number of Charge Depleting Bags/Phases Conducted</b>	8	<b>Transition Bag/Phase Number</b>	--
<b>Charge Depleting Bag/Phase #1</b>			
<b>Test Result/Emission Name</b>		<b>Unrounded Test Result</b>	
Actual Distance Driven (miles)		7.4417304	
Carbon-Related Exhaust Emissions		0	
Drive Trace Absolute Speed Change Rating		0.6	
Drive Trace Energy Economy Rating		0.25	
Drive Trace Inertia Work Ratio Rating		1.01	
Integrated DC KW-HRS		1.257627	
Manufacturer Fuel Economy		16.8996579	
<b>Charge Depleting Bag/Phase #2</b>			

### Charge Depleting Bag/Phase #6

## Certification Summary Information Report

Test Group	TTYXV00.0D11	Evaporative/Refueling Family	--																
<table><tr><th>Test Result/Emission Name</th><th>Unrounded Test Result</th></tr><tr><td>Actual Distance Driven (miles)</td><td>10.2522519</td></tr><tr><td>Carbon-Related Exhaust Emissions</td><td>0</td></tr><tr><td>Drive Trace Absolute Speed Change Rating</td><td>1.25</td></tr><tr><td>Drive Trace Energy Economy Rating</td><td>0.02</td></tr><tr><td>Drive Trace Inertia Work Ratio Rating</td><td>1.62</td></tr><tr><td>Integrated DC KW-HRS</td><td>1.8024968</td></tr><tr><td>Manufacturer Fuel Economy</td><td>17.5814718</td></tr></table>		Test Result/Emission Name	Unrounded Test Result	Actual Distance Driven (miles)	10.2522519	Carbon-Related Exhaust Emissions	0	Drive Trace Absolute Speed Change Rating	1.25	Drive Trace Energy Economy Rating	0.02	Drive Trace Inertia Work Ratio Rating	1.62	Integrated DC KW-HRS	1.8024968	Manufacturer Fuel Economy	17.5814718		
Test Result/Emission Name	Unrounded Test Result																		
Actual Distance Driven (miles)	10.2522519																		
Carbon-Related Exhaust Emissions	0																		
Drive Trace Absolute Speed Change Rating	1.25																		
Drive Trace Energy Economy Rating	0.02																		
Drive Trace Inertia Work Ratio Rating	1.62																		
Integrated DC KW-HRS	1.8024968																		
Manufacturer Fuel Economy	17.5814718																		
Charge Depleting Bag/Phase #7																			
<table><tr><th>Test Result/Emission Name</th><th>Unrounded Test Result</th></tr><tr><td>Actual Distance Driven (miles)</td><td>7.4482999</td></tr><tr><td>Carbon-Related Exhaust Emissions</td><td>0</td></tr><tr><td>Drive Trace Absolute Speed Change Rating</td><td>0.17</td></tr><tr><td>Drive Trace Energy Economy Rating</td><td>-0.05</td></tr><tr><td>Drive Trace Inertia Work Ratio Rating</td><td>0.64</td></tr><tr><td>Integrated DC KW-HRS</td><td>1.1458926</td></tr><tr><td>Manufacturer Fuel Economy</td><td>15.3846196</td></tr></table>		Test Result/Emission Name	Unrounded Test Result	Actual Distance Driven (miles)	7.4482999	Carbon-Related Exhaust Emissions	0	Drive Trace Absolute Speed Change Rating	0.17	Drive Trace Energy Economy Rating	-0.05	Drive Trace Inertia Work Ratio Rating	0.64	Integrated DC KW-HRS	1.1458926	Manufacturer Fuel Economy	15.3846196		
Test Result/Emission Name	Unrounded Test Result																		
Actual Distance Driven (miles)	7.4482999																		
Carbon-Related Exhaust Emissions	0																		
Drive Trace Absolute Speed Change Rating	0.17																		
Drive Trace Energy Economy Rating	-0.05																		
Drive Trace Inertia Work Ratio Rating	0.64																		
Integrated DC KW-HRS	1.1458926																		
Manufacturer Fuel Economy	15.3846196																		
Charge Depleting Bag/Phase #8																			
<table><tr><th>Test Result/Emission Name</th><th>Unrounded Test Result</th></tr><tr><td>Actual Distance Driven (miles)</td><td>35.492125</td></tr><tr><td>Carbon-Related Exhaust Emissions</td><td>0</td></tr><tr><td>Drive Trace Absolute Speed Change Rating</td><td>0</td></tr><tr><td>Drive Trace Energy Economy Rating</td><td>0</td></tr><tr><td>Drive Trace Inertia Work Ratio Rating</td><td>0</td></tr><tr><td>Integrated DC KW-HRS</td><td>8.2646573</td></tr><tr><td>Manufacturer Fuel Economy</td><td>23.2858904</td></tr></table>		Test Result/Emission Name	Unrounded Test Result	Actual Distance Driven (miles)	35.492125	Carbon-Related Exhaust Emissions	0	Drive Trace Absolute Speed Change Rating	0	Drive Trace Energy Economy Rating	0	Drive Trace Inertia Work Ratio Rating	0	Integrated DC KW-HRS	8.2646573	Manufacturer Fuel Economy	23.2858904		
Test Result/Emission Name	Unrounded Test Result																		
Actual Distance Driven (miles)	35.492125																		
Carbon-Related Exhaust Emissions	0																		
Drive Trace Absolute Speed Change Rating	0																		
Drive Trace Energy Economy Rating	0																		
Drive Trace Inertia Work Ratio Rating	0																		
Integrated DC KW-HRS	8.2646573																		
Manufacturer Fuel Economy	23.2858904																		
Manufacturer Test Comments																			
		--																	

Test Group	TTYXV00.0D11	Evaporative/Refueling Family	--
------------	--------------	------------------------------	----

Emission Data Vehicle Information

Vehicle ID / Configuration	26-XZ2E / 1	Manufacturer Vehicle Configuration Number	1
Original Test Group Name	TTYXV00.0D11	Original Evaporative/Refueling Family	--
Original Test Vehicle Model Year	2026		

Vehicle Model

Represented Test Vehicle Make	LEXUS	Represented Test Vehicle Model	ES 350e (21inch Wheels)
-------------------------------	-------	--------------------------------	-------------------------

Leak Family Details

Leak Family Identifier	--	Leak Family Name	--
------------------------	----	------------------	----

Drive Sources and Fuel System Details

Drive Source and Fuel#	Drive Source	Fuel
1	Electric Motor	Electricity

Hybrid Indicator	No	Multiple Fuel Combustion	--
Multiple Fuel Storage	--	Rechargeable Energy Storage System Indicator	Yes
Fuel Cell Indicator	No	Rechargeable Energy Storage System, if 'Other'	--
Rechargeable Energy Storage System	Battery(s)		
Off-board charge Capable Indicator	Yes		
Odometer Correction -- Initial	0	Odometer Correction Factor	1
Odometer Correction Sign	- = System Miles is equal to (Test odometer reading - Initial system miles) * Correction factor		
Odometer Correction Units	Miles		
Engine Code	02	Rated Horsepower	86
Displacement (liters)	0.001		
Air Aspiration Method	Naturally Aspirated	Air Aspiration Method, if 'Other'	
Number of Air Aspiration Devices	--	Air Aspiration Device Configuration	--
Charge Air Cooler Type	N/A	Drive Mode While Testing	4-Wheel Drive
Shift Indicator Light Usage	Not equipped	Aged Emission Components	4,000 (mi)
Curb Weight (lbs)	4770	Equivalent Test Weight (pounds)	5000
GVWR (lbs)	--	N/V Ratio	0
Axle Ratio	0		
Transmission Type	Automatic	# of Transmission Gears	1
Transmission Lockup	No	Creeper Gear	No

Dynamometer Coefficients:

Target Coefficients			Set Coefficients			EPA Calculated Total Road Load Horse Power for City/Highway/Evap Coefficients	
Coefficient Category	A (lbf)	B (lbf/mph)	C (lbf/mph**2)	A (lbf)	B (lbf/mph)	C (lbf/mph**2)	
City/Highway/Evap	30.292	0.2536	0.015528	13.39	0.00344	0.01727	10.9

Emission Control Device Comments

--

Certification Summary Information Report

Test Group	TTYXV00.0D11	Evaporative/Refueling Family	--
Manufacturer Test Vehicle Comments	--		

## Certification Summary Information Report

<b>Test Group</b>	TTYXV00.0D11	<b>Evaporative/Refueling Family</b>	--
<b>Test #</b>	<b>TTYX10092246</b>	<b>Test Procedure</b>	<b>77 - Multi-Cycle Test (MCT)</b>
<b>Exhaust Test # for this Evap Test</b>	--	<b>Test Fuel Type</b>	62 - Electricity
<b>Test Date</b>	08/29/2025	<b>Fuel</b>	N/A
<b>Fuel Batch ID</b>	--	<b>Fuel Calibration Number</b>	--
<b>Vehicle Class</b>	N/A	<b>DF Type</b>	Mfr. Determined
<b>Verify Test Lab ID</b>	Toyota Motor Corporation		
<b>E10 Evaporative Test Measurement Method</b>	--		
<b>Test Start Odometer Reading</b>	2557	<b>Odometer Units</b>	M
<b>4WD Test Dyno</b>	No	<b>Diesel Adjustment Factor Usage</b>	--
<b>State of Charge Delta</b>	No		
<b>Drive Cycle Speed Tolerance Criteria</b>	Used Part 1066 (+/- 2.0 mph, +/- 1.0 sec)	<b>Road Speed Fan Usage</b>	Yes
<b>PHEV/EV Charge Depleting Test Information</b>			
<b>Recharge Event Voltage</b>	240	<b>Recharge Event Energy (kiloWatt-hours)</b>	80.388
<b>Charge Depleting Range (Calculated miles)</b>	434.809	<b>Charge Depleting Range (Actual miles)</b>	434.809
<b>Charge Depleting Range Highway (Calculated miles)</b>	381.308	<b>Derived 5-Cycle Coefficient Model Year</b>	--
<b>All Electric Range Unadjusted (miles)</b>	--	<b>Equivalent All Electric Range (miles)</b>	434.809
<b>Number of Charge Depleting Bags/Phases Conducted</b>	8	<b>Transition Bag/Phase Number</b>	--
<b>Charge Depleting Bag/Phase #1</b>			
<b>Test Result/Emission Name</b>		<b>Unrounded Test Result</b>	
Actual Distance Driven (miles)		7.4482583	
Carbon-Related Exhaust Emissions		0	
Drive Trace Absolute Speed Change Rating		0.73	
Drive Trace Energy Economy Rating		0.48	
Drive Trace Inertia Work Ratio Rating		1.14	
Integrated DC KW-HRS		1.3263883	
Manufacturer Fuel Economy		17.8080326	
<b>Charge Depleting Bag/Phase #2</b>			

### Charge Depleting Bag/Phase #6

## Certification Summary Information Report

Test Group	TTYXV00.0D11	Evaporative/Refueling Family	--																
<table><tr><th>Test Result/Emission Name</th><th>Unrounded Test Result</th></tr><tr><td>Actual Distance Driven (miles)</td><td>10.2518727</td></tr><tr><td>Carbon-Related Exhaust Emissions</td><td>0</td></tr><tr><td>Drive Trace Absolute Speed Change Rating</td><td>2.14</td></tr><tr><td>Drive Trace Energy Economy Rating</td><td>0.18</td></tr><tr><td>Drive Trace Inertia Work Ratio Rating</td><td>2.74</td></tr><tr><td>Integrated DC KW-HRS</td><td>1.932719</td></tr><tr><td>Manufacturer Fuel Economy</td><td>18.8523504</td></tr></table>		Test Result/Emission Name	Unrounded Test Result	Actual Distance Driven (miles)	10.2518727	Carbon-Related Exhaust Emissions	0	Drive Trace Absolute Speed Change Rating	2.14	Drive Trace Energy Economy Rating	0.18	Drive Trace Inertia Work Ratio Rating	2.74	Integrated DC KW-HRS	1.932719	Manufacturer Fuel Economy	18.8523504		
Test Result/Emission Name	Unrounded Test Result																		
Actual Distance Driven (miles)	10.2518727																		
Carbon-Related Exhaust Emissions	0																		
Drive Trace Absolute Speed Change Rating	2.14																		
Drive Trace Energy Economy Rating	0.18																		
Drive Trace Inertia Work Ratio Rating	2.74																		
Integrated DC KW-HRS	1.932719																		
Manufacturer Fuel Economy	18.8523504																		
Charge Depleting Bag/Phase #7																			
<table><tr><th>Test Result/Emission Name</th><th>Unrounded Test Result</th></tr><tr><td>Actual Distance Driven (miles)</td><td>7.4541783</td></tr><tr><td>Carbon-Related Exhaust Emissions</td><td>0</td></tr><tr><td>Drive Trace Absolute Speed Change Rating</td><td>0.34</td></tr><tr><td>Drive Trace Energy Economy Rating</td><td>-0.21</td></tr><tr><td>Drive Trace Inertia Work Ratio Rating</td><td>0.96</td></tr><tr><td>Integrated DC KW-HRS</td><td>1.2455968</td></tr><tr><td>Manufacturer Fuel Economy</td><td>16.7100486</td></tr></table>		Test Result/Emission Name	Unrounded Test Result	Actual Distance Driven (miles)	7.4541783	Carbon-Related Exhaust Emissions	0	Drive Trace Absolute Speed Change Rating	0.34	Drive Trace Energy Economy Rating	-0.21	Drive Trace Inertia Work Ratio Rating	0.96	Integrated DC KW-HRS	1.2455968	Manufacturer Fuel Economy	16.7100486		
Test Result/Emission Name	Unrounded Test Result																		
Actual Distance Driven (miles)	7.4541783																		
Carbon-Related Exhaust Emissions	0																		
Drive Trace Absolute Speed Change Rating	0.34																		
Drive Trace Energy Economy Rating	-0.21																		
Drive Trace Inertia Work Ratio Rating	0.96																		
Integrated DC KW-HRS	1.2455968																		
Manufacturer Fuel Economy	16.7100486																		
Charge Depleting Bag/Phase #8																			
<table><tr><th>Test Result/Emission Name</th><th>Unrounded Test Result</th></tr><tr><td>Actual Distance Driven (miles)</td><td>31.6645805</td></tr><tr><td>Carbon-Related Exhaust Emissions</td><td>0</td></tr><tr><td>Drive Trace Absolute Speed Change Rating</td><td>0</td></tr><tr><td>Drive Trace Energy Economy Rating</td><td>0</td></tr><tr><td>Drive Trace Inertia Work Ratio Rating</td><td>0</td></tr><tr><td>Integrated DC KW-HRS</td><td>7.8248969</td></tr><tr><td>Manufacturer Fuel Economy</td><td>24.7118288</td></tr></table>		Test Result/Emission Name	Unrounded Test Result	Actual Distance Driven (miles)	31.6645805	Carbon-Related Exhaust Emissions	0	Drive Trace Absolute Speed Change Rating	0	Drive Trace Energy Economy Rating	0	Drive Trace Inertia Work Ratio Rating	0	Integrated DC KW-HRS	7.8248969	Manufacturer Fuel Economy	24.7118288		
Test Result/Emission Name	Unrounded Test Result																		
Actual Distance Driven (miles)	31.6645805																		
Carbon-Related Exhaust Emissions	0																		
Drive Trace Absolute Speed Change Rating	0																		
Drive Trace Energy Economy Rating	0																		
Drive Trace Inertia Work Ratio Rating	0																		
Integrated DC KW-HRS	7.8248969																		
Manufacturer Fuel Economy	24.7118288																		
Manufacturer Test Comments																			
--																			

Test Group	TTYXV00.0D11	Evaporative/Refueling Family	--
------------	--------------	------------------------------	----

Emission Data Vehicle Information

Vehicle ID / Configuration	26-XZ2E / 2	Manufacturer Vehicle Configuration Number	2
Original Test Group Name	TTYXV00.0D11	Original Evaporative/Refueling Family	--
Original Test Vehicle Model Year	2026		

Vehicle Model

Represented Test Vehicle Make	LEXUS	Represented Test Vehicle Model	ES 350e (19 inch AS)
-------------------------------	-------	--------------------------------	----------------------

Leak Family Details

Leak Family Identifier	--	Leak Family Name	--
------------------------	----	------------------	----

Drive Sources and Fuel System Details

Drive Source and Fuel#	Drive Source	Fuel
1	Electric Motor	Electricity

Hybrid Indicator	No	Multiple Fuel Combustion	--
Multiple Fuel Storage	--	Rechargeable Energy Storage System Indicator	Yes
Fuel Cell Indicator	No	Rechargeable Energy Storage System, if 'Other'	--
Rechargeable Energy Storage System	Battery(s)		
Off-board charge Capable Indicator	Yes		
Odometer Correction -- Initial	0	Odometer Correction Factor	1
Odometer Correction Sign	- = System Miles is equal to (Test odometer reading - Initial system miles) * Correction factor		
Odometer Correction Units	Miles		
Engine Code	02	Rated Horsepower	86
Displacement (liters)	0.001		
Air Aspiration Method	Naturally Aspirated	Air Aspiration Method, if 'Other'	
Number of Air Aspiration Devices	--	Air Aspiration Device Configuration	--
Charge Air Cooler Type	N/A	Drive Mode While Testing	4-Wheel Drive
Shift Indicator Light Usage	Not equipped	Aged Emission Components	4,000 (mi)
Curb Weight (lbs)	4730	Equivalent Test Weight (pounds)	5000
GVWR (lbs)	--	N/V Ratio	0
Axle Ratio	0		
Transmission Type	Automatic	# of Transmission Gears	1
Transmission Lockup	No	Creeper Gear	No

Dynamometer Coefficients:

Target Coefficients			Set Coefficients			EPA Calculated Total Road Load Horse Power for City/Highway/Evap Coefficients	
Coefficient Category	A (lbf)	B (lbf/mph)	C (lbf/mph**2)	A (lbf)	B (lbf/mph)	C (lbf/mph**2)	
City/Highway/Evap	28.566	0.26362	0.0148	11.714	0.02951	0.016827	10.5

Emission Control Device Comments

--

Certification Summary Information Report

Test Group	TTYXV00.0D11	Evaporative/Refueling Family	--
Manufacturer Test Vehicle Comments	TEST FOR CANADA.		

## Certification Summary Information Report

<b>Test Group</b>	TTYXV00.0D11	<b>Evaporative/Refueling Family</b>	--
<b>Test #</b>	<b>TTYX10092245</b>	<b>Test Procedure</b>	<b>77 - Multi-Cycle Test (MCT)</b>
<b>Exhaust Test # for this Evap Test</b>	--	<b>Test Fuel Type</b>	62 - Electricity
<b>Test Date</b>	09/16/2025	<b>Fuel</b>	N/A
<b>Fuel Batch ID</b>	--	<b>Fuel Calibration Number</b>	--
<b>Vehicle Class</b>	N/A	<b>DF Type</b>	Mfr. Determined
<b>Verify Test Lab ID</b>	Toyota Motor Corporation		
<b>E10 Evaporative Test Measurement Method</b>	--		
<b>Test Start Odometer Reading</b>	3059	<b>Odometer Units</b>	M
<b>4WD Test Dyno</b>	No	<b>Diesel Adjustment Factor Usage</b>	--
<b>State of Charge Delta</b>	No		
<b>Drive Cycle Speed Tolerance Criteria</b>	Used Part 1066 (+/- 2.0 mph, +/- 1.0 sec)	<b>Road Speed Fan Usage</b>	Yes
<b>PHEV/EV Charge Depleting Test Information</b>			
<b>Recharge Event Voltage</b>	240	<b>Recharge Event Energy (kiloWatt-hours)</b>	80.6404
<b>Charge Depleting Range (Calculated miles)</b>	460.264	<b>Charge Depleting Range (Actual miles)</b>	460.264
<b>Charge Depleting Range Highway (Calculated miles)</b>	395.472	<b>Derived 5-Cycle Coefficient Model Year</b>	--
<b>All Electric Range Unadjusted (miles)</b>	--	<b>Equivalent All Electric Range (miles)</b>	460.264
<b>Number of Charge Depleting Bags/Phases Conducted</b>	8	<b>Transition Bag/Phase Number</b>	--
<b>Charge Depleting Bag/Phase #1</b>			
<b>Test Result/Emission Name</b>		<b>Unrounded Test Result</b>	
Actual Distance Driven (miles)		7.442345	
Carbon-Related Exhaust Emissions		0	
Drive Trace Absolute Speed Change Rating		0.76	
Drive Trace Energy Economy Rating		0.53	
Drive Trace Inertia Work Ratio Rating		1.14	
Integrated DC KW-HRS		1.2834882	
Manufacturer Fuel Economy		17.2457501	
<b>Charge Depleting Bag/Phase #2</b>			

### Charge Depleting Bag/Phase #6

## Certification Summary Information Report

Test Group	TTYXV00.0D11	Evaporative/Refueling Family	--																
<table><tr><th>Test Result/Emission Name</th><th>Unrounded Test Result</th></tr><tr><td>Actual Distance Driven (miles)</td><td>10.2499705</td></tr><tr><td>Carbon-Related Exhaust Emissions</td><td>0</td></tr><tr><td>Drive Trace Absolute Speed Change Rating</td><td>2</td></tr><tr><td>Drive Trace Energy Economy Rating</td><td>0.11</td></tr><tr><td>Drive Trace Inertia Work Ratio Rating</td><td>2.64</td></tr><tr><td>Integrated DC KW-HRS</td><td>1.8581534</td></tr><tr><td>Manufacturer Fuel Economy</td><td>18.1283779</td></tr></table>				Test Result/Emission Name	Unrounded Test Result	Actual Distance Driven (miles)	10.2499705	Carbon-Related Exhaust Emissions	0	Drive Trace Absolute Speed Change Rating	2	Drive Trace Energy Economy Rating	0.11	Drive Trace Inertia Work Ratio Rating	2.64	Integrated DC KW-HRS	1.8581534	Manufacturer Fuel Economy	18.1283779
Test Result/Emission Name	Unrounded Test Result																		
Actual Distance Driven (miles)	10.2499705																		
Carbon-Related Exhaust Emissions	0																		
Drive Trace Absolute Speed Change Rating	2																		
Drive Trace Energy Economy Rating	0.11																		
Drive Trace Inertia Work Ratio Rating	2.64																		
Integrated DC KW-HRS	1.8581534																		
Manufacturer Fuel Economy	18.1283779																		
Charge Depleting Bag/Phase #7																			
<table><tr><th>Test Result/Emission Name</th><th>Unrounded Test Result</th></tr><tr><td>Actual Distance Driven (miles)</td><td>7.4461037</td></tr><tr><td>Carbon-Related Exhaust Emissions</td><td>0</td></tr><tr><td>Drive Trace Absolute Speed Change Rating</td><td>0.71</td></tr><tr><td>Drive Trace Energy Economy Rating</td><td>0.22</td></tr><tr><td>Drive Trace Inertia Work Ratio Rating</td><td>1.13</td></tr><tr><td>Integrated DC KW-HRS</td><td>1.1710377</td></tr><tr><td>Manufacturer Fuel Economy</td><td>15.7268517</td></tr></table>				Test Result/Emission Name	Unrounded Test Result	Actual Distance Driven (miles)	7.4461037	Carbon-Related Exhaust Emissions	0	Drive Trace Absolute Speed Change Rating	0.71	Drive Trace Energy Economy Rating	0.22	Drive Trace Inertia Work Ratio Rating	1.13	Integrated DC KW-HRS	1.1710377	Manufacturer Fuel Economy	15.7268517
Test Result/Emission Name	Unrounded Test Result																		
Actual Distance Driven (miles)	7.4461037																		
Carbon-Related Exhaust Emissions	0																		
Drive Trace Absolute Speed Change Rating	0.71																		
Drive Trace Energy Economy Rating	0.22																		
Drive Trace Inertia Work Ratio Rating	1.13																		
Integrated DC KW-HRS	1.1710377																		
Manufacturer Fuel Economy	15.7268517																		
Charge Depleting Bag/Phase #8																			
<table><tr><th>Test Result/Emission Name</th><th>Unrounded Test Result</th></tr><tr><td>Actual Distance Driven (miles)</td><td>34.0830713</td></tr><tr><td>Carbon-Related Exhaust Emissions</td><td>0</td></tr><tr><td>Drive Trace Absolute Speed Change Rating</td><td>0</td></tr><tr><td>Drive Trace Energy Economy Rating</td><td>0</td></tr><tr><td>Drive Trace Inertia Work Ratio Rating</td><td>0</td></tr><tr><td>Integrated DC KW-HRS</td><td>8.1028781</td></tr><tr><td>Manufacturer Fuel Economy</td><td>23.7739081</td></tr></table>				Test Result/Emission Name	Unrounded Test Result	Actual Distance Driven (miles)	34.0830713	Carbon-Related Exhaust Emissions	0	Drive Trace Absolute Speed Change Rating	0	Drive Trace Energy Economy Rating	0	Drive Trace Inertia Work Ratio Rating	0	Integrated DC KW-HRS	8.1028781	Manufacturer Fuel Economy	23.7739081
Test Result/Emission Name	Unrounded Test Result																		
Actual Distance Driven (miles)	34.0830713																		
Carbon-Related Exhaust Emissions	0																		
Drive Trace Absolute Speed Change Rating	0																		
Drive Trace Energy Economy Rating	0																		
Drive Trace Inertia Work Ratio Rating	0																		
Integrated DC KW-HRS	8.1028781																		
Manufacturer Fuel Economy	23.7739081																		
Manufacturer Test Comments		--																	
Fuel Properties																			

## Certification Summary Information Report

Test Group		TTYXV00.0D11			Evaporative/Refueling Family			--	
Consolidated List of Standards									
Exhaust Standards									
Cert Region		California + CAA Section 177 states			Cert/In-Use Code			Cert	
Vehicle Class		LDV/Passenger Car			Standard Level			California ZEV	
Fuel		Electricity			Test Procedure			California fuel 3-day exhaust	
Useful Life	Emission Name	Rounded Result	RAF	NMOG / NMHC	Upward Diesel Adjustment Factor	Downward Diesel Adjustment Factor	Mult DF	Add DF	Std
150,000 miles	CO	--	--	--	--	--	--	--	0.0
Cert Region		Federal			Cert/In-Use Code			Cert	
Vehicle Class		LDV/Passenger Car			Standard Level			Federal Tier 3 Bin 0	
Fuel		Electricity			Test Procedure			Charge Depleting Highway	
Useful Life	Emission Name	Rounded Result	RAF	NMOG / NMHC	Upward Diesel Adjustment Factor	Downward Diesel Adjustment Factor	Mult DF	Add DF	Std
150,000 miles	CREE	--	--	--	--	--	--	0	999.9999
150,000 miles	MFR FE	--	--	--	--	--	--	0	999.9999
Cert Region		Federal			Cert/In-Use Code			Cert	
Vehicle Class		LDV/Passenger Car			Standard Level			Federal Tier 3 Bin 0	
Fuel		Electricity			Test Procedure			Federal fuel 3-day exhaust	
Useful Life	Emission Name	Rounded Result	RAF	NMOG / NMHC	Upward Diesel Adjustment Factor	Downward Diesel Adjustment Factor	Mult DF	Add DF	Std
150,000 miles	CO	--	--	--	--	--	--	0	0.0
Cert Region		Federal			Cert/In-Use Code			Cert	
Vehicle Class		LDV/Passenger Car			Standard Level			Federal Tier 3 Bin 0	
Fuel		Electricity			Test Procedure			Charge Depleting UDDS	
Useful Life	Emission Name	Rounded Result	RAF	NMOG / NMHC	Upward Diesel Adjustment Factor	Downward Diesel Adjustment Factor	Mult DF	Add DF	Std
150,000 miles	CREE	--	--	--	--	--	--	0	999.9999
150,000 miles	MFR FE	--	--	--	--	--	--	--	999.9999

## Certification Summary Information Report

<b>Test Group</b>		TTYXV00.0D11			<b>Evaporative/Refueling Family</b>			--	
<b>Cert Region</b>		California + CAA Section 177 states			<b>Cert/In-Use Code</b>			Cert	
<b>Vehicle Class</b>		LDV/Passenger Car			<b>Standard Level</b>			California ZEV	
<b>Fuel</b>		Electricity			<b>Test Procedure</b>			Charge Depleting UDDS	
<b>Useful Life</b>	<b>Emission Name</b>	<b>Rounded Result</b>	<b>RAF</b>	<b>NMOG / NMHC</b>	<b>Upward Diesel Adjustment Factor</b>	<b>Downward Diesel Adjustment Factor</b>	<b>Mult DF</b>	<b>Add DF</b>	<b>Std</b>
150,000 miles	MFR FE	--	--	--	--	--	--	--	999.9999
<b>Cert Region</b>		California + CAA Section 177 states			<b>Cert/In-Use Code</b>			Cert	
<b>Vehicle Class</b>		LDV/Passenger Car			<b>Standard Level</b>			California ZEV	
<b>Fuel</b>		Electricity			<b>Test Procedure</b>			Charge Depleting Highway	
<b>Useful Life</b>	<b>Emission Name</b>	<b>Rounded Result</b>	<b>RAF</b>	<b>NMOG / NMHC</b>	<b>Upward Diesel Adjustment Factor</b>	<b>Downward Diesel Adjustment Factor</b>	<b>Mult DF</b>	<b>Add DF</b>	<b>Std</b>
150,000 miles	MFR FE	--	--	--	--	--	--	0	999.9999

## Certification Summary Information Report

Test Group		TTYXV00.0D11	Evaporative/Refueling Family		--
Glossary					
Useful Life					
4	4,000 miles		120	120,000 miles	
50	50,000 miles		150	150,000 miles	
100	100,000 miles				
Emission Name					
HC-TOTAL	Total Hydrocarbon		AS-VOLT	Average System Voltage	
CO	Carbon Monoxide		CO2 BAG 1	Bag 1 Carbon Dioxide	
CO2	Carbon dioxide		CO2 BAG 2	Bag 2 Carbon Dioxide	
CREE	Carbon-Related Exhaust Emissions		CO2 BAG 3	Bag 3 Carbon Dioxide	
OPT-CREE	Optional Carbon-Related Exhaust Emissions		CO2 BAG 4	Bag 4 Carbon Dioxide	
NOX	Nitrogen Oxide		NMOG+NOX	Non-methane organic gases plus Nitrogen Oxides	
PM	Particulate Matter		NMOG+NOX-COMP	SFTP Composite Non-methane Organic Gases + Nitrogen Oxides	
PM-COMP	SFTP Composite Particulate Matter		DT-IWRR	Drive Trace Inertia Work Ratio Rating	
HC-NM	Non-methane Hydrocarbon		DT-ASCR	Drive Trace Absolute Speed Change Rating	
OMHCE	Organic material Hydrocarbon Equivalent		DT-EER	Drive Trace Energy Economy Rating	
OMNMHCE	Organic material non-methane HC equivalent		COMB-CREE	Combined Carbon-Related Exhaust Emissions	
NMOG	Non-methane organic gases		COMB-OPT-CREE	Combined Optional Carbon-Related Exhaust Emissions	
HCHO	Formaldehyde		HC-TOTAL-EQUIV	Total Hydrocarbon equivalent - Evap only	
H3C2HO	Acetaldehyde		METHANE-COMB	Combined CH4 for HD 2b/3 vehicles only	
HC-NM+NOX	SFTP Non-methane Hydrocarbon + Nitrogen Oxides for US06 or SC03		N2O-COMB	Combined Nitrous Oxide for HD 2b/3 vehicles only	
HC-NM+NOX-COMP	SFTP Composite Non-methane Hydrocarbon + Nitrogen Oxides		LEAK-DIA	Effective Leak Diameter (inches)	
CO-COMP	SFTP Composite Carbon Monoxide		LEAK-GAS CAP	Gas Cap Leakage (cc/min)	
ETHANOL	C2H5OH - Ethanol		CO2-COMB	Combined Carbon Dioxide for HD 2b/3 Vehicles Only	
FE BAG 1	Bag 1 Fuel Economy		KW-HRS	Integrated DC KW-HRS	
FE BAG 2	Bag 2 Fuel Economy		CH4 BAG 1	Bag 1 Methane	
FE BAG 3	Bag 3 Fuel Economy		CH4 BAG 2	Bag 2 Methane	
FE BAG 4	Bag 4 Fuel Economy		CH4 BAG 3	Bag 3 Methane	
MFR FE	Manufacturer Fuel Economy		CH4 BAG 4	Bag 4 Methane	
HC	Hydrocarbon for Running Loss and ORVR		CO BAG 1	Bag 1 Carbon Monoxide	
METHANE	CH4 - Methane		CO BAG 2	Bag 2 Carbon Monoxide	
METHANOL	CH3OH - Methanol		CO BAG 3	Bag 3 Carbon Monoxide	
N2O	Nitrous Oxide		CO BAG 4	Bag 4 Carbon Monoxide	
SPITBACK	Spitback Hydrocarbon in grams		NMOG BAG 1	Bag 1 Non-methane organic gases	
AMP-HRS	Integrated Amp-hours		NMOG BAG 2	Bag 2 Non-methane organic gases	
START-SOC	System Start State of Charge Watt-hours		NMOG BAG 3	Bag 3 Non-methane organic gases	
END-SOC	System End State of Charge Watt-hours		NMOG BAG 4	Bag 4 Non-methane organic gases	
ACT-DISTANCE	Actual Distance Driven (miles)				
Certification Region					

## Certification Summary Information Report

Test Group		TTYXV00.0D11	Evaporative/Refueling Family		--
CA	California + CAA Section 177 states		FA	Federal	
<b>Exhaust Emission Standard Level</b>					
B1	Federal Tier 2 Bin 1		T3B160	Federal Tier 3 Bin 160	
B2	Federal Tier 2 Bin 2		T3B125	Federal Tier 3 Bin 125	
B3	Federal Tier 2 Bin 3		T3B110	Federal Tier 3 Transitional Bin 110	
B4	Federal Tier 2 Bin 4		T3B85	Federal Tier 3 Transitional Bin 85	
B5	Federal Tier 2 Bin 5		T3SULEV30	Federal Tier 3 Transitional LEV-II SULEV30 Carryover	
B6	Federal Tier 2 Bin 6		T3B70	Federal Tier 3 Bin 70	
B7	Federal Tier 2 Bin 7		T3B50	Federal Tier 3 Bin 50	
B8	Federal Tier 2 Bin 8		T3B30	Federal Tier 3 Bin 30	
B9	Federal Tier 2 Bin 9		T3B20	Federal Tier 3 Bin 20	
B10	Federal Tier 2 Bin 10		T3B0	Federal Tier 3 Bin 0	
B11	Federal Tier 2 Bin 11		HDV2B395	Federal Tier 3 HD Class 2b Transitional Bin 395	
HDV1	HDV1 (Federal HD chassis Class 2b GVW 8501-10000)		HDV2B340	Federal Tier 3 HD Class 2b Transitional Bin 340	
HDV2	HDV2 (Federal HD chassis Class 3 GVW 10001-14000)		HDV2B250	Federal Tier 3 HD Class 2b Bin 250	
L2	California LEV-II LEV		HDV2B200	Federal Tier 3 HD Class 2b Bin 200	
L2OP	California LEV-II LEV Optional		HDV2B170	Federal Tier 3 HD Class 2b Bin 170	
U2	California LEV-II ULEV		HDV2B150	Federal Tier 3 HD Class 2b Bin 150	
S2	California LEV-II SULEV		HDV2B0	Federal Tier 3 HD Class 2b Bin 0	
ZEV	California ZEV		HDV3B630	Federal Tier 3 HD Class 3 Transitional Bin 630	
OT	Other		HDV3B570	Federal Tier 3 HD Class 3 Transitional Bin 570	
T1	Federal Tier 1		HDV3B400	Federal Tier 3 HD Class 3 Bin 400	
PZEV	California PZEV		HDV3B270	Federal Tier 3 HD Class 3 Bin 270	
L2LEV160	California LEV-II LEV160		HDV3B230	Federal Tier 3 HD Class 3 Bin 230	
L2ULEV125	California LEV-II ULEV125		HDV3B200	Federal Tier 3 HD Class 3 Bin 200	
L2SULEV30	California LEV-II SULEV30		HDV3B0	Federal Tier 3 HD Class 3 Bin 0	
L2LEV395	California LEV-II LEV395		L4SULEV100	California LEV-IV SULEV100	
L2ULEV340	California LEV-II ULEV340		L4SULEV125	California LEV-IV SULEV125	
L2LEV630	California LEV-II LEV630		L4SULEV15	California LEV-IV SULEV15	
L2ULEV570	California LEV-II ULEV570		L4SULEV150	California LEV-IV SULEV150	
L3LEV160	California LEV-III LEV160		L4SULEV170	California LEV-IV SULEV170	
L3ULEV125	California LEV-III ULEV125		L4SULEV175	California LEV-IV SULEV175	
L3ULEV70	California LEV-III ULEV70		L4SULEV20	California LEV-IV SULEV20	
L3ULEV50	California LEV-III ULEV50		L4SULEV200	California LEV-IV SULEV200	
L3SULEV30	California LEV-III SULEV30		L4SULEV230	California LEV-IV SULEV230	
L3SULEV20	California LEV-III SULEV20		L4SULEV25	California LEV-IV SULEV25	
L3LEV395	California LEV-III LEV395		L4SULEV30	California LEV-IV SULEV30	
L3ULEV340	California LEV-III ULEV340		L4SULEV75	California LEV-IV SULEV75	
L3ULEV250	California LEV-III ULEV250		L4SULEV85	California LEV-IV SULEV85	
L3ULEV200	California LEV-III ULEV200		L4ULEV125	California LEV-IV ULEV125	

## Certification Summary Information Report

Test Group		TTYXV00.0D11	Evaporative/Refueling Family		--
L3SULEV170	California LEV-III SULEV170		L4ULEV200	California LEV-IV ULEV200	
L3SULEV150	California LEV-III SULEV150		L4ULEV250	California LEV-IV ULEV250	
L3LEV630	California LEV-III LEV630		L4ULEV270	California LEV-IV ULEV270	
L3ULEV570	California LEV-III ULEV570		L4ULEV40	California LEV-IV ULEV40	
L3ULEV400	California LEV-III ULEV400		L4ULEV400	California LEV-IV ULEV400	
L3ULEV270	California LEV-III ULEV270		L4ULEV50	California LEV-IV ULEV50	
L3SULEV230	California LEV-III SULEV230		L4ULEV60	California LEV-IV ULEV60	
L3SULEV200	California LEV-III SULEV200		L4ULEV70	California LEV-IV ULEV70	
<b>Transmission Type Code</b>					
AMS	Automated Manual- Selectable (e.g. Automated Manual with paddles)	M	Manual		
A	Automatic	OT	Other		
AM	Automated Manual	SA	Semi-Automatic		
CVT	Continuously Variable	SCV	Selectable Continuously Variable (e.g. CVT with paddles)		
<b>Drive System Code</b>					
4	4-Wheel Drive	P	Part-time 4-Wheel Drive		
F	2-Wheel Drive, Front	A	All Wheel Drive		
R	2-Wheel Drive, Rear				
<b>Additional Terms and Acronyms</b>					
AFC	Alternative Fuel Converter	ICI	Independent Commercial Importer		
CSI	Certificate Summary Information	ORVR	Onboard Refueling Vapor Recovery		
DF	Deterioration Factor	SIL	Shift Indicator Light		
Evap	Evaporation, Evaporative	Trans	Transmission		

## 17 California Requirements

### 17.1 Statement of Compliance

#### 17.1.1 General statement

The production vehicles which are subject to registration or sale in the state of California will be, in all material respects, substantially the same in construction as the test vehicles which are certified by the California Air Resources Board, and will meet all the applicable vehicle emission standards which are set forth by the California Air Resources Board in accordance

with Section 43101 of the Health and Safety Code.

#### 17.1.2 Driveability Statement

In accordance with "California Exhaust Emission Standards and Test Procedures for 1988 And Subsequent Model Passenger Cars, Light-Duty Trucks and Medium-Duty Vehicles, 11.e." as amended August 5, 1999, Toyota certifies that its production vehicles covered by the certificate for the applicable model year have driveability and performance characteristics which satisfy the manufacturer's specific driveability and performance requirements. This statement is based on driveability data and other evidence showing compliance with the manufacturer's in-house performance criteria which, we believe, assures elimination of one of the major causes of wide-spread tampering with the emission control systems.

## 17.2 Supplemental Data and Certification Review Sheet

E.O.#. \_\_\_\_\_ Page \_\_\_\_\_

2026 MODEL-YEAR AIR RESOURCES BOARD SUPPLEMENTAL DATA SHEET  
ZEV-PASSENGER CARS, LIGHT-DUTY TRUCKS AND MEDIUM-DUTY VEHICLESManufacturer: TOYOTA Test Group: TTYXV00.0D11Vehicle Class(es): PC X, LDT1 (0-3750 lbs. LVW) \_\_\_\_\_, LDT2 ( $\geq 3,751$  lbs. LVW) \_\_\_\_\_,  
MDV6 (8,500-10,000 lbs. GVW) \_\_\_\_\_, MDV7 (10,001-14,000 lbs. GVW) \_\_\_\_\_ZEV Type: NEV \_\_\_\_\_, ZEV XNo. of ZEV Credits per vehicle: 1Fuel Type: Electro-chemical Battery X, Fuel Cell \_\_\_\_\_, Capacitor \_\_\_\_\_, Other (specify) \_\_\_\_\_Battery Type(s): Lead Acid \_\_\_\_\_ Nickel Cadmium \_\_\_\_\_ SBLA \_\_\_\_\_ Sodium Sulfur \_\_\_\_\_  
Sodium Nickel Chloride \_\_\_\_\_ Nickel Metal Hydride \_\_\_\_\_ Lithium Metal Disulfide \_\_\_\_\_  
Zinc Air \_\_\_\_\_ Zinc Bromine \_\_\_\_\_ Lithium Polymer \_\_\_\_\_, Lithium Ion X,  
Other (specify): \_\_\_\_\_Total Battery Weight (kg.): 482 kg Total Battery Volume (liters): 397No. of batteries or modules per vehicle: 1 Total Battery Voltage: 384.8 VCharger(saa): On-board X Off-board \_\_\_\_\_ Conductive \_\_\_\_\_ Inductive \_\_\_\_\_.

Drive Motors(s): AC Induction \_\_\_\_\_ DC Brush \_\_\_\_\_, DC Brushless \_\_\_\_\_

Switched Reluctance \_\_\_\_\_ Other (specify ): AC Synchronous.No. of Drive Motors 1 Rated motor power 64.0 @ 11,080 rpm Max rpm: \_\_\_\_\_.Drive: FWD X RWD \_\_\_\_\_ 4WD-FT \_\_\_\_\_ 4WD-PT \_\_\_\_\_Regenerative Braking: Yes X No \_\_\_\_\_ FW \_\_\_\_\_ RW \_\_\_\_\_ AW \_\_\_\_\_.Driver Controlled Regen Braking: Yes X No \_\_\_\_\_ Coast Regen Braking: Yes X No \_\_\_\_\_.Air Conditioning: Yes X No \_\_\_\_\_, Fuel Fired Heater:<sup>1</sup> Yes \_\_\_\_\_ No X

## 17.2 Supplemental Data and Certification Review Sheet

Vehicle Make & Models (If coded, see attachments)	Trans type M5, A4 (If applicable)	GVWR (lbs)	Curb Weight (lbs)	ETW (lbs)	DPA/ RLHP
RZ 350e FWD (18inch Wheels)	N/A	5555	4385	4750	10.7
RZ 350e FWD (20inch Wheels)	N/A	5555	4415	4750	11.1
ES 350e (19 inch Wheels)	N/A	5940	4730	5000	10.2
ES 350e (21 inch Wheels)	N/A	5940	4770	5000	10.9

Date Issued \_\_\_\_\_ Revisions \_\_\_\_\_

<sup>1</sup> Fuel fired heaters are not allowed in pure ZEVs for model year 2009 and subsequently

Test group: TTYXV00.0D11

E.O.#. \_\_\_\_\_ Page \_\_\_\_\_

2026 MODEL-YEAR AIR RESOURCES BOARD SUPPLEMENTAL DATA SHEET  
ZEV-PASSENGER CARS, LIGHT-DUTY TRUCKS AND MEDIUM-DUTY VEHICLES

Manufacturer: TOYOTA Test Group: TTYXV00.0D11

<b><u>Range Test Results</u></b>											
				City				Hwy			
Vehicle ID	Trans	(check one) ____TW <u>X</u> ETW (lbs)	(check one) ____DPA <u>X</u> RLHP Or dyno coeff.	Range (miles)	System AC (Wh/mi)	System DC (Wh/mi)	Vehicle DC (Wh/mi)	Range (miles)	System AC (Wh/mi)	System DC (Wh/mi)	Vehicle DC (Wh/mi)
26-XB2E (00)	N/A	4750	10.7	455.677	178	N/A	160	389.035	208	N/A	187
26-XB2E (01)	N/A	4750	11.1	437.294	185	N/A	167	375.079	216	N/A	194
26-XZ2E (00)	N/A	5000	10.2	469.431	171	N/A	155	406.373	198	N/A	179
26-XZ2E (01)	N/A	5000	10.9	434.809	185	N/A	168	381.308	211	N/A	191

Battery Test Results:

Specific Energy: Wh/kg 160

Remarks:

Date Issued :

Revisions

----- ARB USE ONLY -----

Application:

Processed By: \_\_\_\_\_ Date : \_\_\_\_\_ Reviewed by: \_\_\_\_\_ Date: \_\_\_\_\_

### **17.3 Reserved**

### **17.4 Vehicle Certification Range**

#### **17.4.1 Vehicle Value**

Please refer to the CBI Test Group file.

### **17.5 Vehicle Safety**

#### **17.5.1 All Information for Safe Operation of Vehicle**

#### **17.5.2 Information on Safe Handling of Battery System**

#### **17.5.3 Description of Emergency Procedure**

#### **17.5.4 Emergency**

Please refer to the owner's manual

### **17.6 PRP warranty period**

Please refer to the CBI Test Group file.

## **17.7 An attestation of 1962.5**

Please refer to the ZEV Data Standardization Attestation Form

## **17.8 Communication Protocol with a Scan Tool**

Toyota utilizes "UDSonCAN" standardized protocol for CAN communication to interface with a scan tool that adheres to the SAE J1979-3 standard.

## **18. Service Information Availability**

Please refer to Section 1 of the FOI common file.