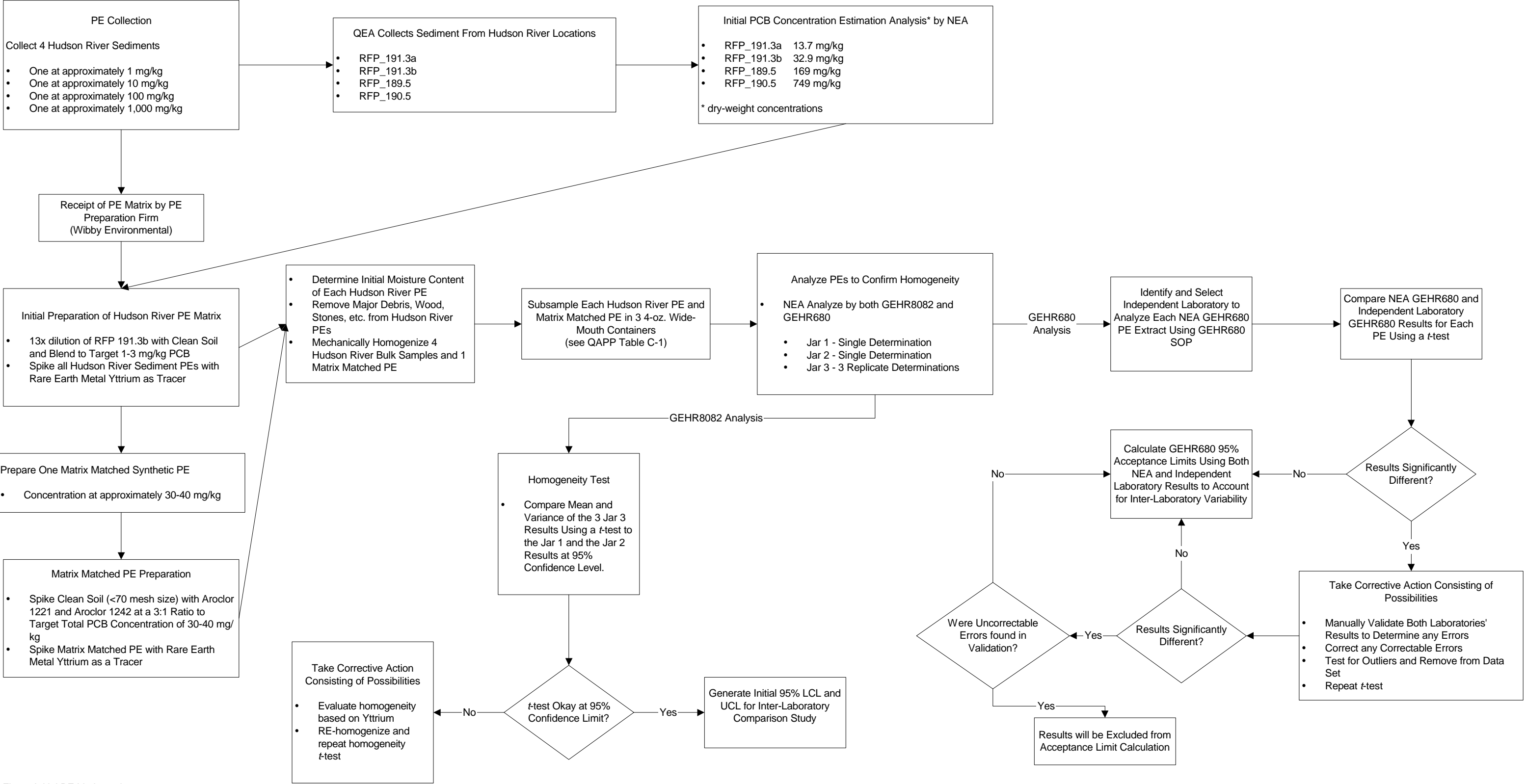


## LIST OF FIGURES

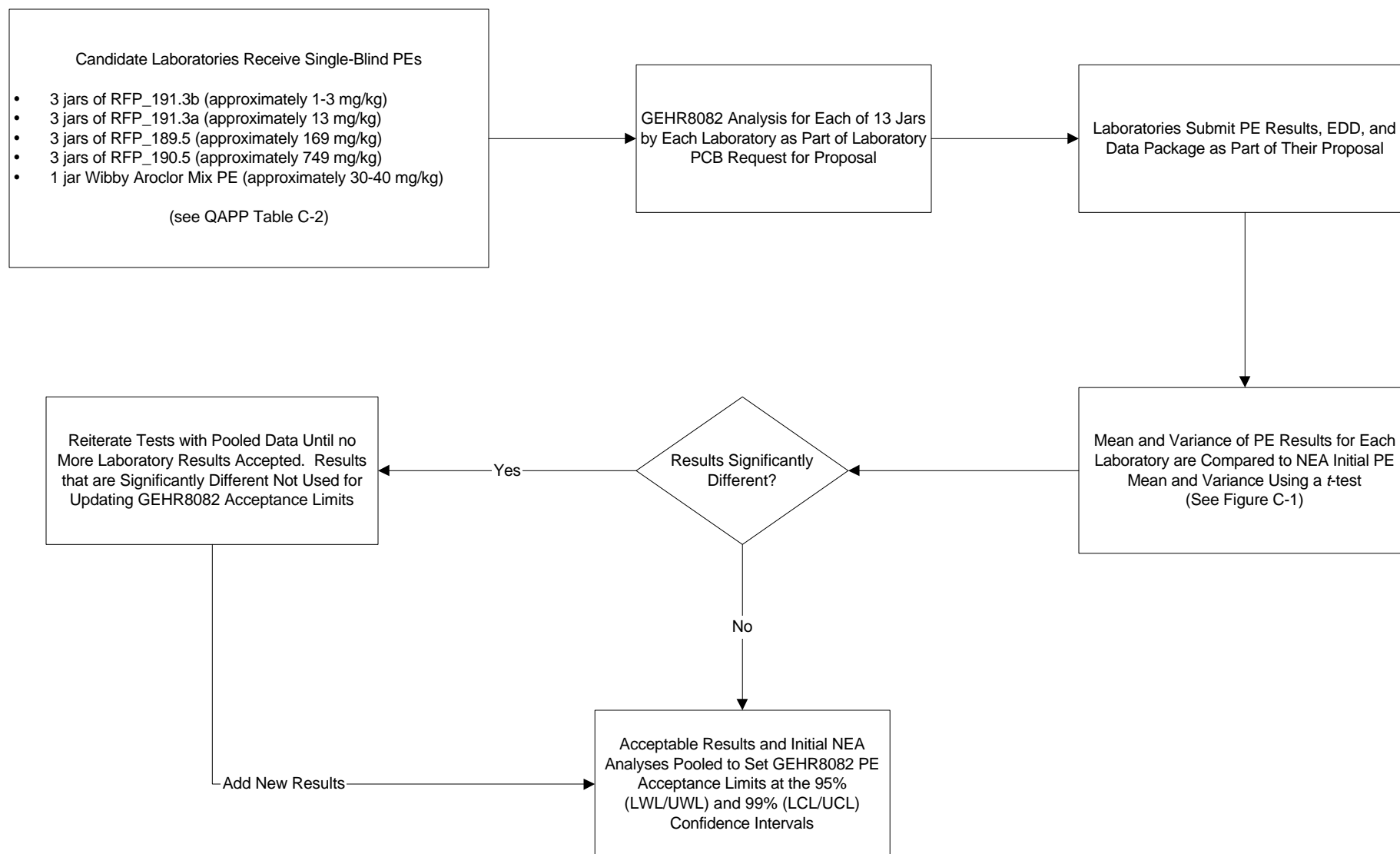
Figure A-1	Conceptual Organizational Chart
Figure A-2	Site Map
Figure A-3	Project Schedule
Figure A-4	Flow Diagram for Development of Relationship between Aroclor PCB Data and Tri+ PCBs
Figure A-5	Figure Deleted for Revision 4.
Figure A-6	Sample Field Log
Figure A-7	Sample Chain of Custody Form
Figure B-1	Bathymetric Survey Transects
Figure B-1a	Flow Diagram for GEHR680 Homolog PCBs Sample Selection
Figure B-1b	Flow Diagram for Dioxin/Furan and RCRA Metals Sample Analysis Selection
Figure B-2a	River Miles 195-193
Figure B-2b	River Miles 193-192
Figure B-2c	River Miles 192-191
Figure B-2d	River Miles 191-190
Figure B-2e	River Miles 190-TID
Figure B-2f	River Miles 185-183
Figure B-3	Core Segmentation Approach
Figure B-4	Example Bottle Label
Figure B-5	Sediment Sample Collection and Processing Chart
Figure B-6	Sediment Sample Collection Quality and Information Management Flow Chart
Figure B-7	Core Data Entry Form
Figure B-8	Core Processing Data Entry
Figure C-1	Flow Diagram of Initial PCB PE Acceptance Generation
Figure C-2	Flow Diagram of Inter-Laboratory Comparison Study PE Analysis
Figure C-3	Flow Diagram for GEHR8082 and GEHR680 PE Sample Analysis
Figure C-4	Example PE Sample Result Pass/Fail Summary Report
Figure C-5	Corrective Action Form

## FIGURES

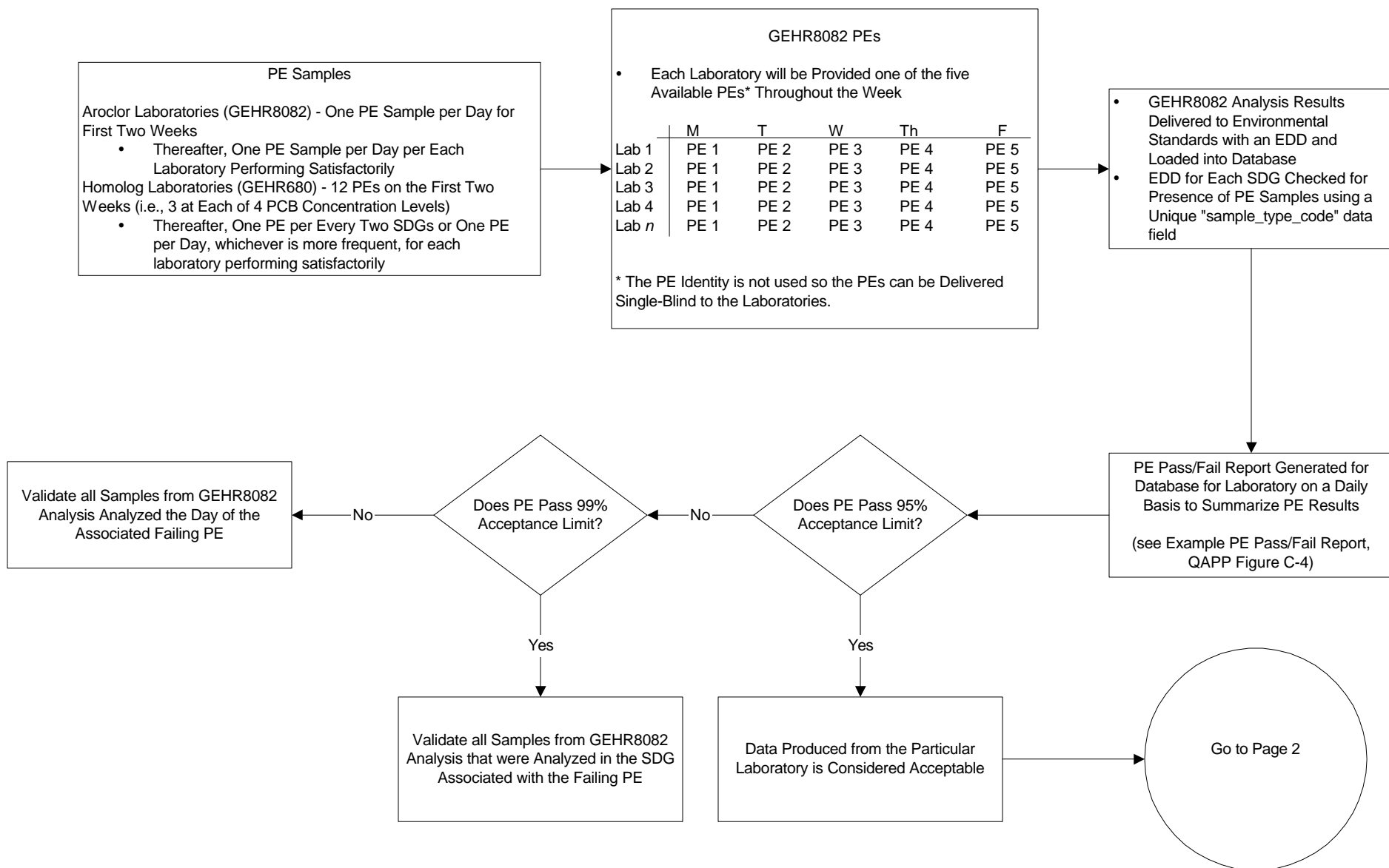
Figure C-1 Flow Diagram of Initial PCB PE Acceptance Limit Generation



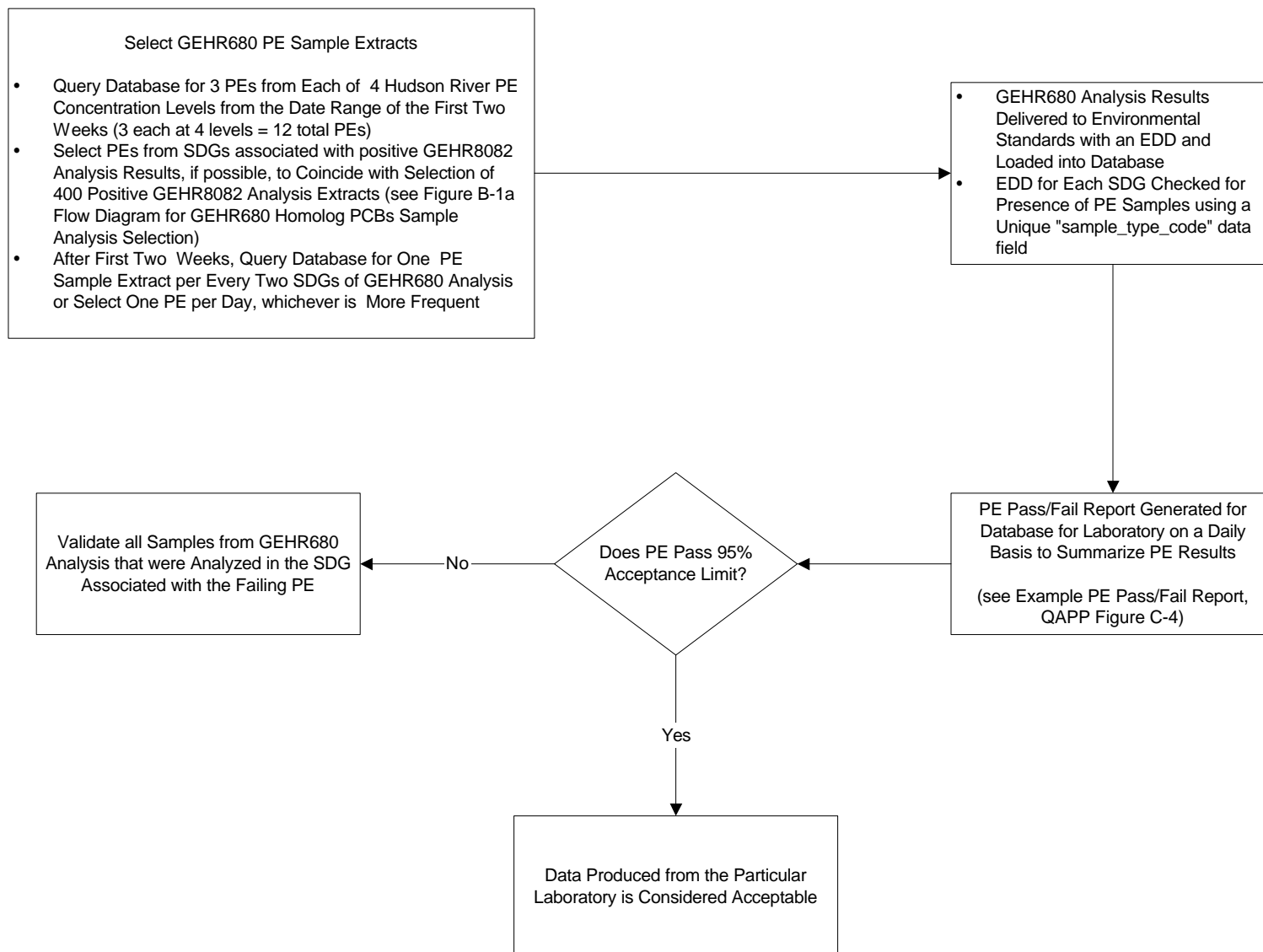
**Figure C-2 Flow Diagram of Inter-Laboratory Comparison Study PE Analysis**



**Figure C-3 Flow Diagram for GEHR8082 and GEHR680 PE Sample Analysis**



**Figure C-3 Flow Diagram for GEHR8082 and GEHR680 PE Sample Analysis**



**Figure C-4**  
**Example PE Sample Result Pass/Fail Summary Report**  
**GE Hudson River Design Support Sediment Sampling and Analysis Program**

<b>LABORATORY:</b> _____ <b>PE ID:</b> _____ <b>COC:</b> _____ <b>SDG:</b> _____ <b>DATE COLLECTED:</b> _____ <b>METHOD:</b> _____								
	Result		95%		WL Qualifer	99%		CL Qualifer
	mg/Kg	MDL	LWL	UWL	P or F	LCL	UCL	P or F
<b>Aroclor-1016</b>								
<b>Aroclor-1221</b>								
<b>Aroclor-1232</b>								
<b>Aroclor-1242</b>								
<b>Aroclor-1248</b>								
<b>Aroclor-1254</b>								
<b>Aroclor-1260</b>								
<b>Total PCBs</b>								

**Notes:**

MDL= Method Detection Limit

LWL/UWL= Lower Warning Limit/Upper Warning Limit

LCL/UCL= Lower Control Limit/Upper Control Limit

P/F= Pass/Fail

If WL Qualifer=F then the SDG containing the PE sample must be validated.

If CL Qualifer=F then all associated SDGs must be validated.

Associated SDGs and COCs	Validation ? (Yes or No)
SDG 1/COC# Sample A Sample B Sample C	
SDG 2/COC## Sample D Sample E Sample F	
SDG 3/COC### Sample G Sample H Sample I	

**GENERAL ELECTRIC COMPANY  
HUDSON RIVER DESIGN SUPPORT SEDIMENT SAMPLING AND ANALYSIS  
PROGRAM**

Other Distribution: