



## Hudson River PCBs SUPERFUND SITE

Region 2: NJ, NY, PR, VI • 290 Broadway, New York, NY 10007

### Facility Siting Process Update

## Old Moreau Dredge Spoils Area/New York State Canal Corporation

SUITABLE SITE

April 2004

### Highlights

This fact sheet provides an update on EPA's evaluation of the Old Moreau Dredge Spoils Area/New York State Canal Corporation site ("**Old Moreau**") for use as a sediment processing/transfer (dewatering) facility needed for the cleanup of the Hudson River PCBs Superfund Site.

The Old Moreau site has been identified as one of five suitable sites, but is not currently being carried forward in the design process.

Detailed information about the Old Moreau site and other sites that were evaluated by EPA, and the facility siting process, can be found in the *Draft Facility Siting Report*, which is being released for public review and a 60-day comment period. The public comment period on the *Draft Facility Siting Report* begins on May 3, 2004, and ends on July 1, 2004.

### Public Forum

EPA will host a public forum to provide an update on the process and discuss the *Draft Facility Siting Report*. The meeting will be held on Tuesday, May 18, 2004, from 6:00 to 8:30 p.m. at the Moreau Community Center, 144 Main Street, South Glens Falls, New York.

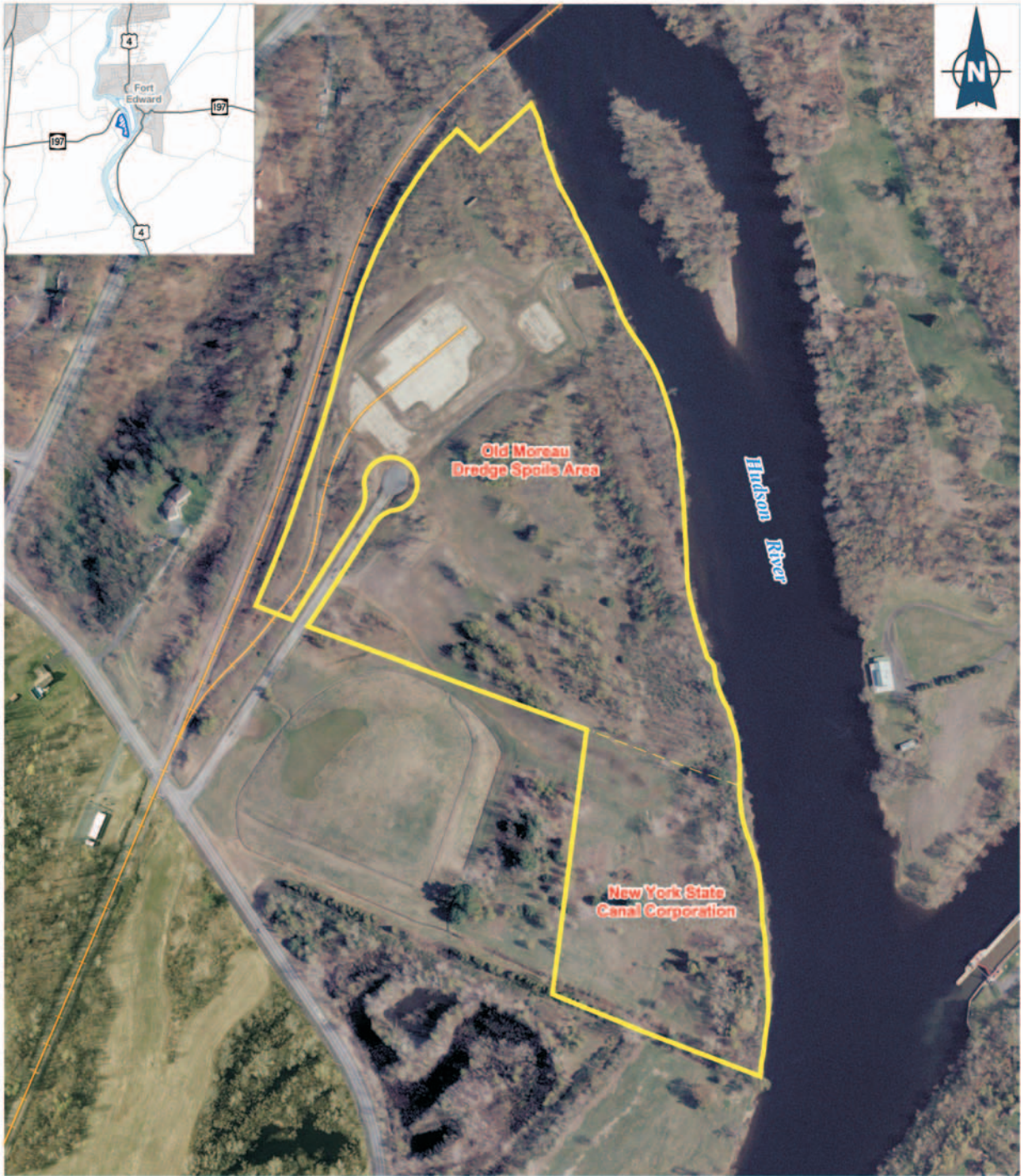
The Old Moreau site is located in the Town of Moreau in Saratoga County (see Figure 1). The site is classified as vacant industrial property. It is located on the Hudson River at the northern end of the dredging project. An abandoned rail spur is on site, along with an access road, and the site is in River Section 1, where a majority of the material to be dredged is located.

The Old Moreau site has several benefits, limitations, and additional design considerations, which are factors that could affect the ease of design. EPA believes that these issues can be addressed during design of the site and do not preclude its use as a dewatering facility.




### Benefits of the Old Moreau Site

- Located on the Hudson River, with adequate river frontage in River Section 1, where approximately 60% of the dredging is expected to occur.
- Sufficient usable space to construct and operate dewatering and rail yard facilities.
- Direct access to an active Canadian Pacific rail line and the existing Fort Edward Rail Yard.
- Site is outside the 100-year floodplain.
- Electricity is available.
- Closest proximity (among the seven Final Candidate Sites) to areas that are anticipated to be hydraulically dredged (sediments could be transferred to the site by pipeline).
- An interested landowner owns the site.

*While EPA plans to select one to three site(s) from the three recommended sites (Energy Park, Bruno, and/or OG Real Estate), the remaining two suitable sites (Old Moreau and Canal Corp.) may need to be reconsidered in the event a serious problem, such as an unforeseen design issue, arises at one of the recommended sites. EPA considers it very unlikely that Old Moreau would be reconsidered.*



**LEGEND**

-  Approximate Site Boundary
-  Tax Parcel Boundary
-  Railroad

**Hudson River**  
PCBs SUPERFUND SITE

**Figure 1**  
**Old Moreau Dredge Spoils Area /**  
**New York State Canal Corporation**



## Limitations of the Old Moreau Site

- Previous dumping and disposal activities at the site have resulted in contamination that may limit the amount of usable space at the site.
- Dredge spoils and fill material throughout the site present concerns about sub-surface conditions that may include poor foundation material.
- Limited usable acreage and other design factors that may require barging processed material to another site or staging rail cars at the nearby Fort Edward Rail Yard.

## Additional Design Considerations at the Old Moreau Site

- Navigational dredging may be routinely required due to sediment build-up in this portion of the Hudson River.

## Summary

The main limitation of the Old Moreau site is the possible restriction of its use as only a dewatering facility, with off-site rail storage or barging of processed material to another site. However, its proximity to dredge areas, river and rail access, and availability of utilities provide enough benefits to outweigh the potential limitations and additional design considerations. As a result of such analysis, the Old Moreau site is suitable for use as a dewatering facility, but it is not a recommended site at this time.

The *Draft Facility Siting Report* includes specific data about site conditions, sensitive resources, wetlands, potential contamination, floodplains, cultural resources, and other information that was used to identify suitable and recommended sites.

## Background

In order to implement the cleanup of the PCB-contaminated sediments from the Upper Hudson River, EPA must locate and construct temporary facilities that will be used to dewater and transfer the dredged sediments. These facilities are an important part of the cleanup and will be selected, designed, and constructed to safely handle the dredged material. Four main operations will occur at these facilities:

- Transferring dredged sediments from barges or pipelines to the facility;

- Processing (dewatering) and stabilizing the sediments;
- Supporting an on-site water treatment facility to clean the water removed from the sediments (prior to discharge back to the river); and
- Transferring the stabilized sediments to rail and/or barge for disposal at an existing licensed landfill outside of the Hudson River Valley.

In September 2003, Old Moreau was identified as one of seven Final Candidate Sites for construction and operation of dewatering facilities. Following on-site investigations and technical evaluations, this site was identified as one of five suitable sites. However, it is not currently being considered as one of the three recommended sites that will be carried forward in the design process.

## Public Review

The *Draft Facility Siting Report*, which describes the entire facility siting process and provides detailed site information on all the candidate sites, is available at the information repositories located in Glens Falls, Fort Edward (Hudson River Field Office), Ballston Spa, Albany, Poughkeepsie, New York City (EPA Region 2 Office), and Edgewater, New Jersey. The electronic version can be found on the EPA project Web site at [www.epa.gov/udson](http://www.epa.gov/udson). Copies are also available on CD-ROM by calling the Hudson River Field Office. The public can submit comments in writing via hard copy or E-mail. All comments should be sent to:

**David H. King, Director**  
**Hudson River Field Office**  
**421 Lower Main Street**  
**Hudson Falls, NY 12839**  
[king.david@epa.gov](mailto:king.david@epa.gov)



## For More Information

---

Visit, call, or write to the Hudson River Field Office at the address below or log on to [www.epa.gov/udson](http://www.epa.gov/udson).

### EPA Contacts



**Leo Rosales**

**Community Involvement Coordinator**

**Hudson River Field Office**

421 Lower Main Street

Hudson Falls, NY 12839

(518) 747-4389 or (866) 615-6490 Toll-Free

[hrfo@capital.net](mailto:hrfo@capital.net)

*The Field Office hours are Monday – Friday  
8:00 am – 4:30 pm, with evening hours by  
appointment.*



**David Kluesner**

**Community Involvement Coordinator**

EPA Region 2 Office

290 Broadway

New York, NY 10007

(212) 637-3653

[kluesner.dave@epa.gov](mailto:kluesner.dave@epa.gov)

---

### EPA Regional Public Liaison

EPA Region 2 has designated a public liaison as a point-of-contact for community concerns and questions about the federal Superfund program in New York, New Jersey, Puerto Rico, and the U.S. Virgin Islands. To support this effort, the Agency has established a 24-hour, toll-free number that the public can call to request information, express concerns, or register complaints about Superfund. The public liaison for EPA's Region 2 office is: George H. Zachos, U.S. EPA, Region 2, 2890 Woodbridge Avenue MS-211, Edison, New Jersey 08837, (732) 321-6621, toll-free (888) 283-7626.