

LEGEND

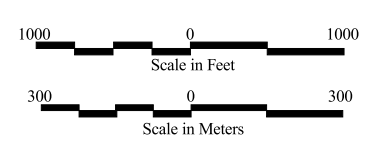
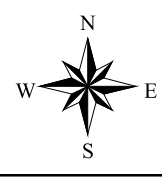
- Mound
- Rocky
- Island
- NYS DEC Hot Spot
- Dam and Lock
- River Mile Marker
- Shoreline at 8,471 cfs
- Road
- Railroad/Siding
- Full-Section Remediation Target Area (PCB MPA > 0 g/m²)

Depth of Removal (ft.)

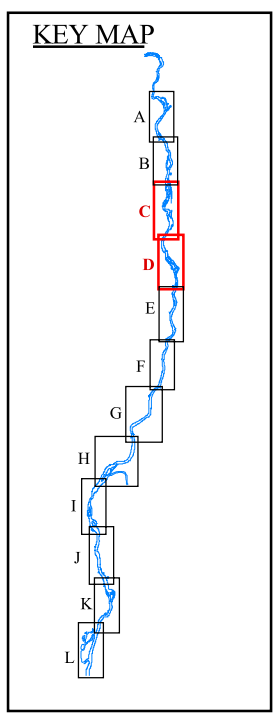
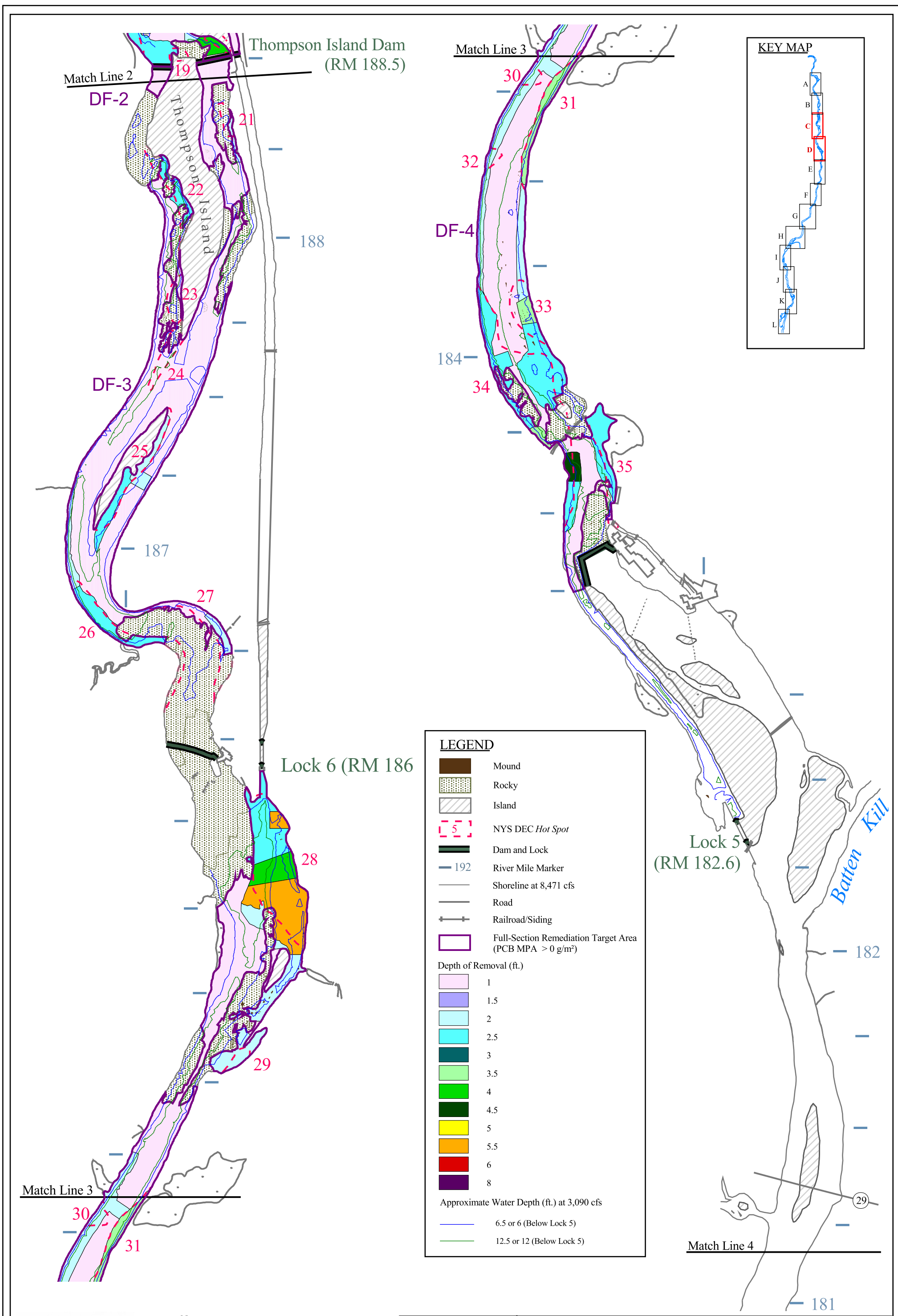
- 1
- 1.5
- 2
- 2.5
- 3
- 3.5
- 4
- 4.5
- 5
- 5.5
- 6
- 8

Approximate Water Depth (ft.) at 3,090 cfs

- 6.5
- 12.5



Hudson River PCBs Reassessment Feasibility Study	Plate 15	Sheet 1 of 2 RM 194.8 - 188.5
	REM Alternatives: Full-Section Removal Areas and Depths (PCB MPA > 0 g/m ²)	



LEGEND

- Mound
- Rocky
- Island
- NYS DEC Hot Spot
- Dam and Lock
- River Mile Marker
- Shoreline at 8,471 cfs
- Road
- Railroad/Siding
- Full-Section Remediation Target Area (PCB MPA > 0 g/m²)

Depth of Removal (ft.)

- 1
- 1.5
- 2
- 2.5
- 3
- 3.5
- 4
- 4.5
- 5
- 5.5
- 6
- 8

Approximate Water Depth (ft.) at 3,090 cfs

- 6.5 or 6 (Below Lock 5)
- 12.5 or 12 (Below Lock 5)

