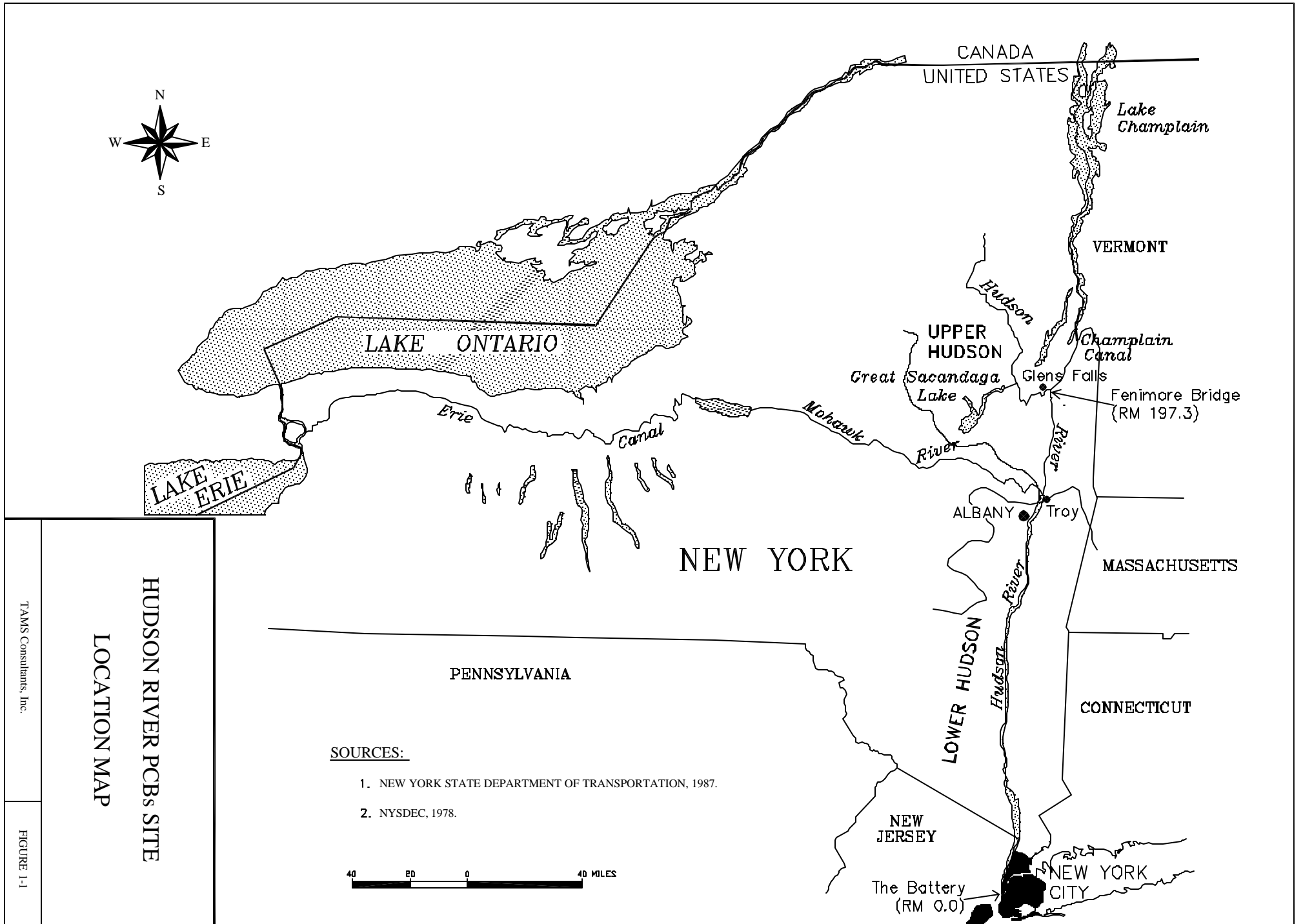


**HUDSON RIVER PCBs REASSESSMENT RI/FS
PHASE 3 REPORT: FEASIBILITY STUDY**

LIST OF FIGURES

CHAPTER 1

- 1-1 Hudson River PCBs Superfund Site - Location Map
- 1-2 Phased RI/FS Process
- 1-3 Hudson River PCBs Site - River Sections for Alternatives Evaluation
- 1-4 Total PCB Concentrations at Rogers Island, Observations and Moving Average
- 1-5 Total PCB Concentrations at TID-West, Observations and Moving Average
- 1-6 Total PCB Surface Sediment Concentrations from GE 1998-99 Samples
in the Upper Hudson
- 1-7 NYSDEC PCB Results for Pumpkinseed from Stillwater to Coveville, Converted to Tri+ Basis
- 1-8 NYSDEC PCB Results for Largemouth Bass from Stillwater to Coveville, Converted to Tri+
Basis



CANADA
UNITED STATES

Lake Champlain

VERMONT

LAKE ONTARIO

UPPER HUDSON

Great Sacandaga Lake

Champlain Canal

Glens Falls

Fenimore Bridge (RM 197.3)

LAKE ERIE

Erie

Canal

Mohawk

River

River

ALBANY

Troy

NEW YORK

MASSACHUSETTS

PENNSYLVANIA

LOWER HUDSON

Hudson River

CONNECTICUT

NEW JERSEY

NEW YORK CITY

The Battery (RM 0.0)

SOURCES:

1. NEW YORK STATE DEPARTMENT OF TRANSPORTATION, 1987.
2. NYSDEC, 1978.

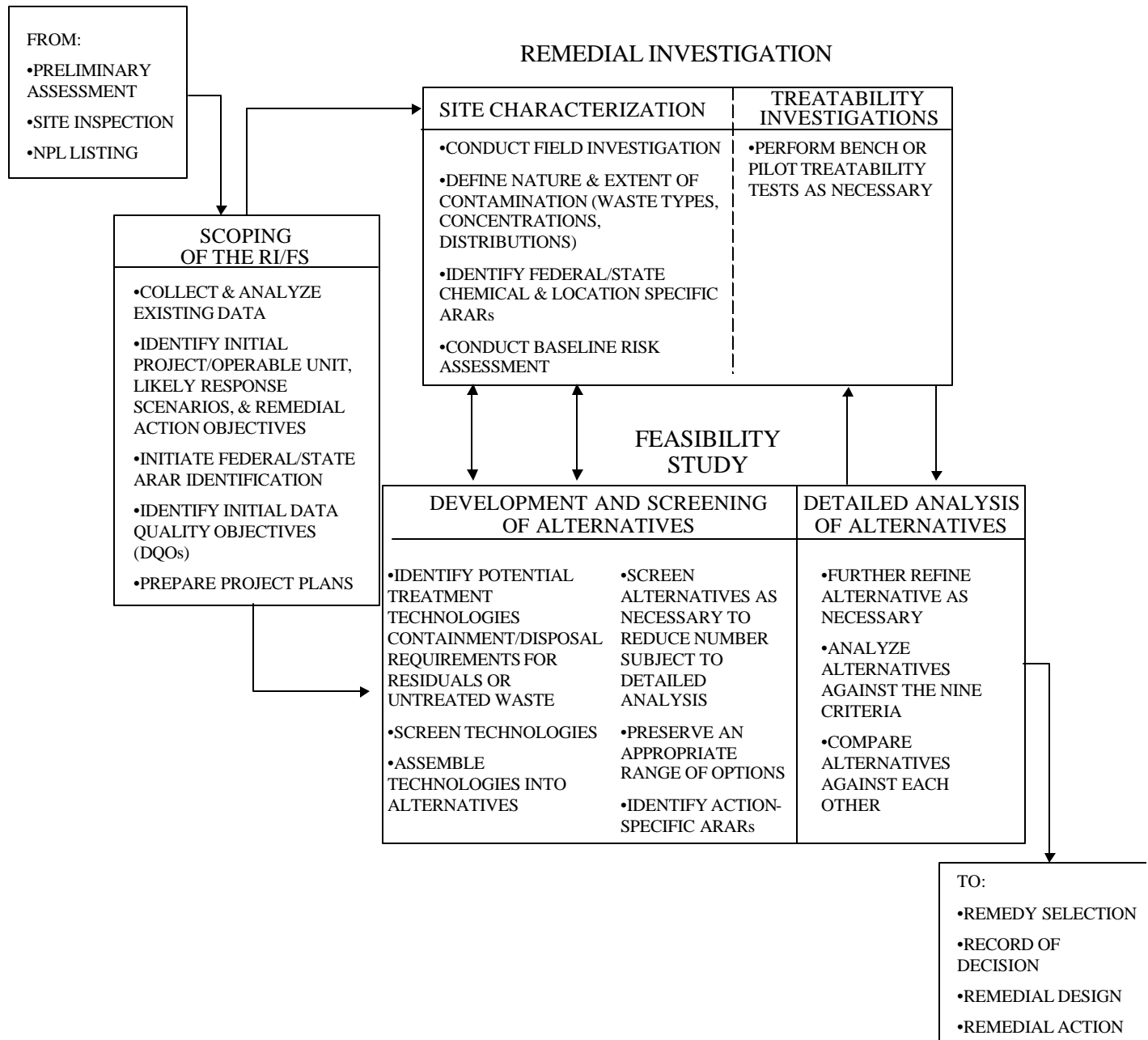


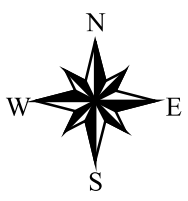
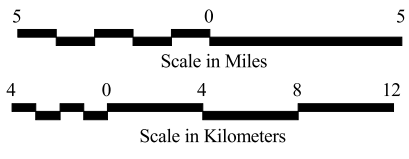
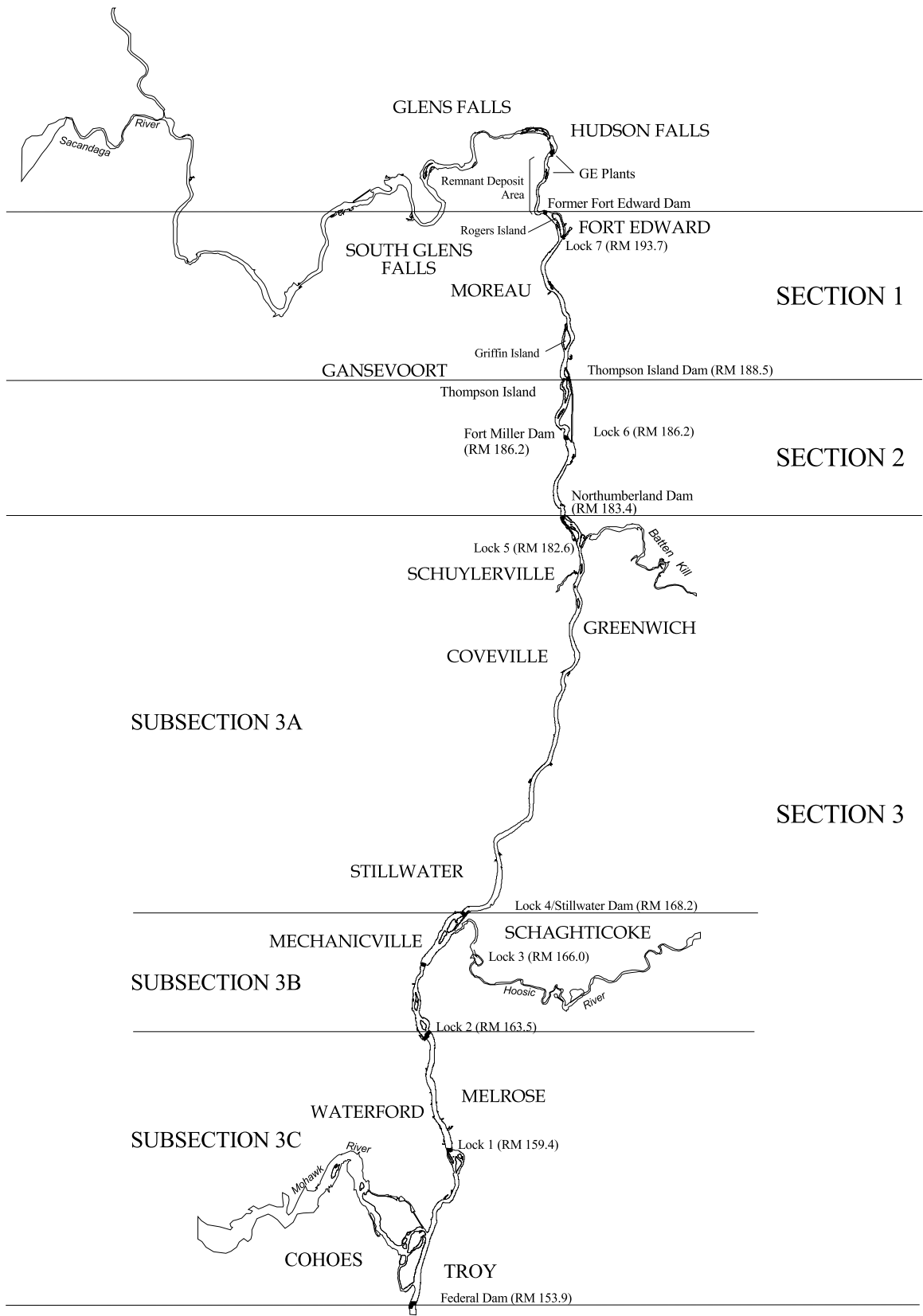
HUDSON RIVER PCBs SITE
LOCATION MAP

TAMIS Consultants, Inc.

FIGURE 1-1

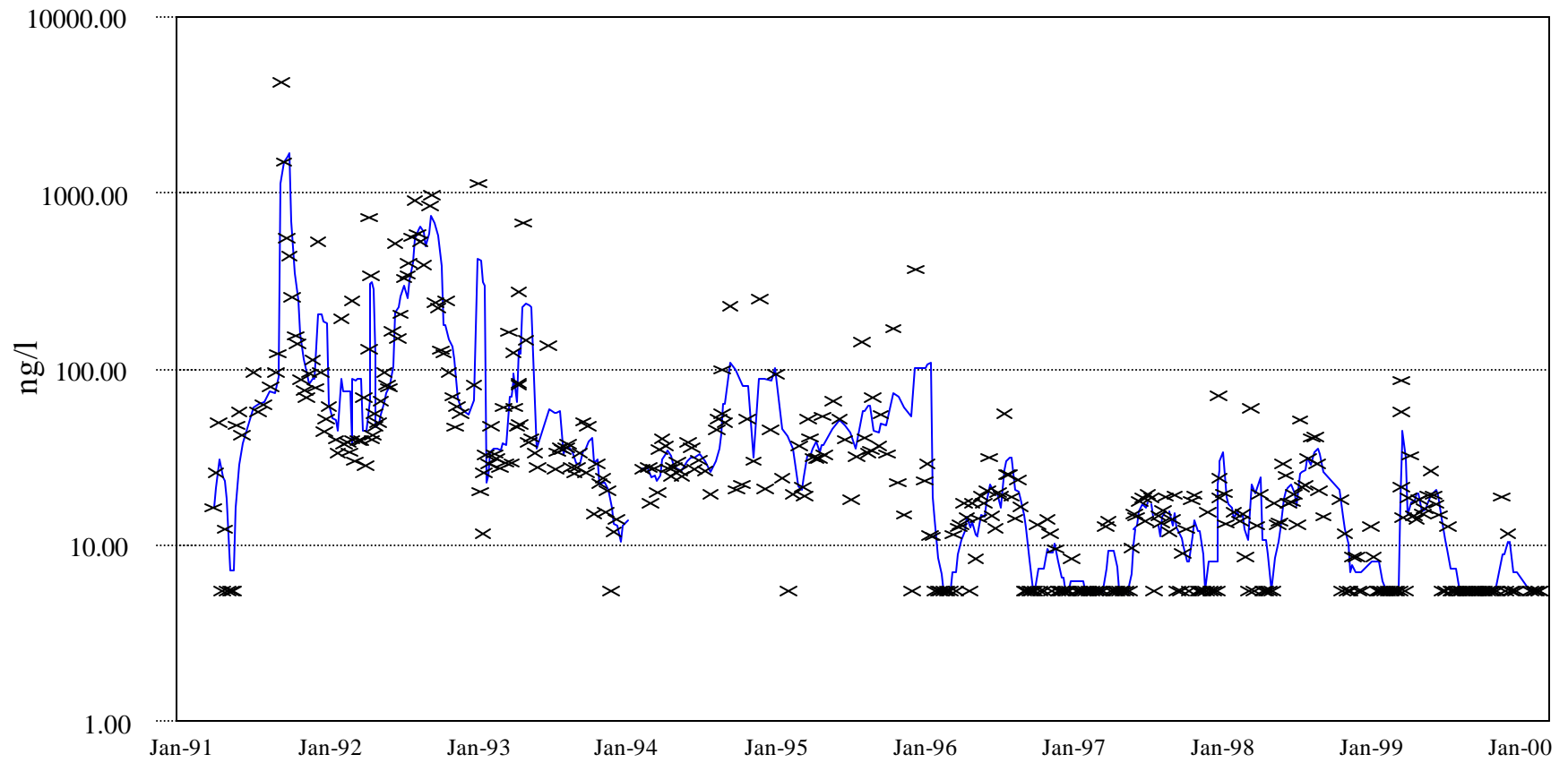
FIGURE 1-2
PHASED RI/FS PROCESS





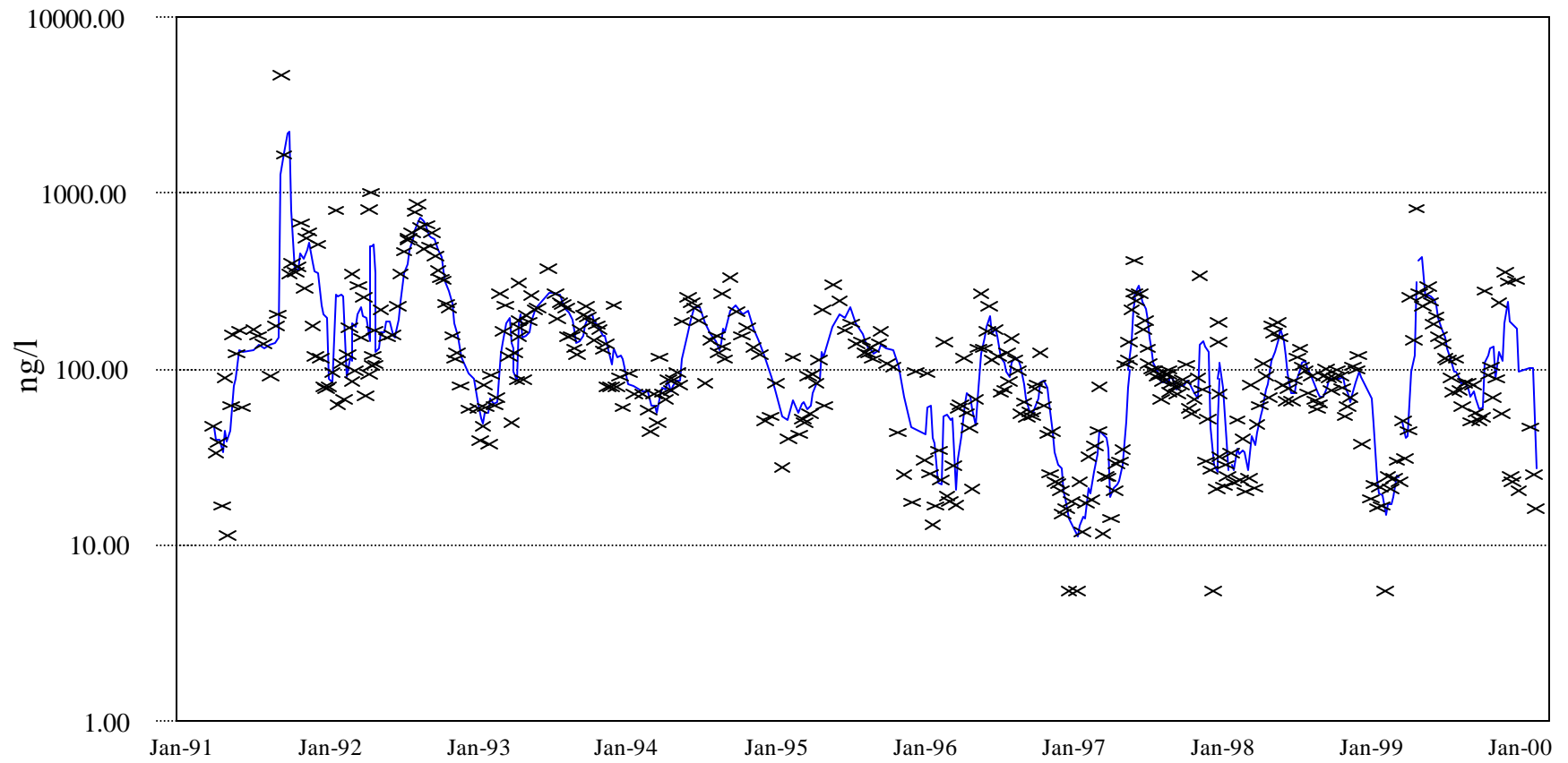
HUDSON RIVER PCBs REASSESSMENT RI/FS FEASIBILITY STUDY	
Hudson River PCBs Site River Sections for Alternatives Evaluation	
TAMS CONSULTANTS, Inc.	Figure 1-3

Figure 1-4. Total PCB Concentrations at Rogers Island, Observations and Moving Average



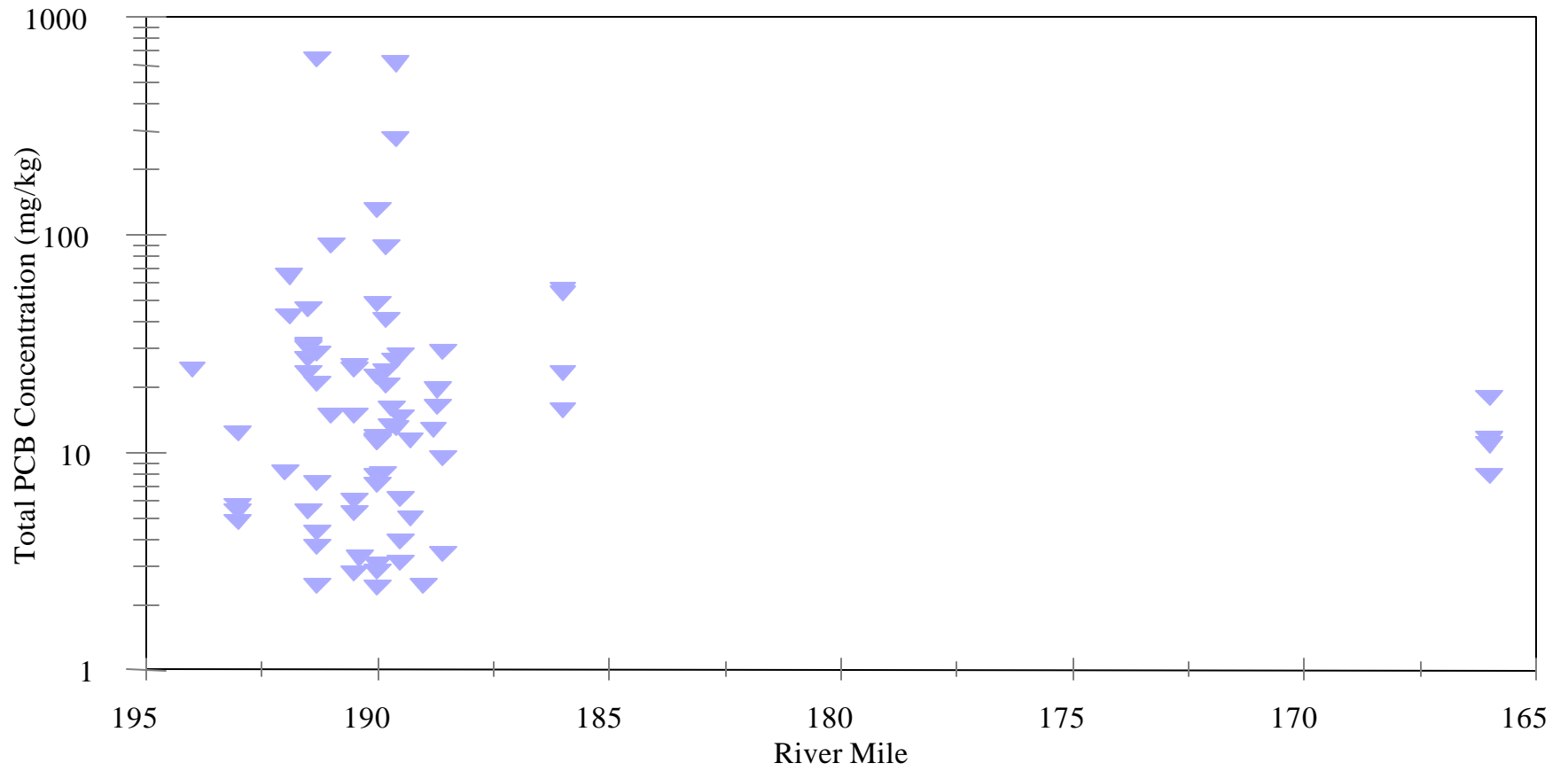
Source: GE Database Release 000403

Figure 1-5. Total PCB Concentrations at TID-West, Observations and Moving Average



Source: GE Database Release 000403

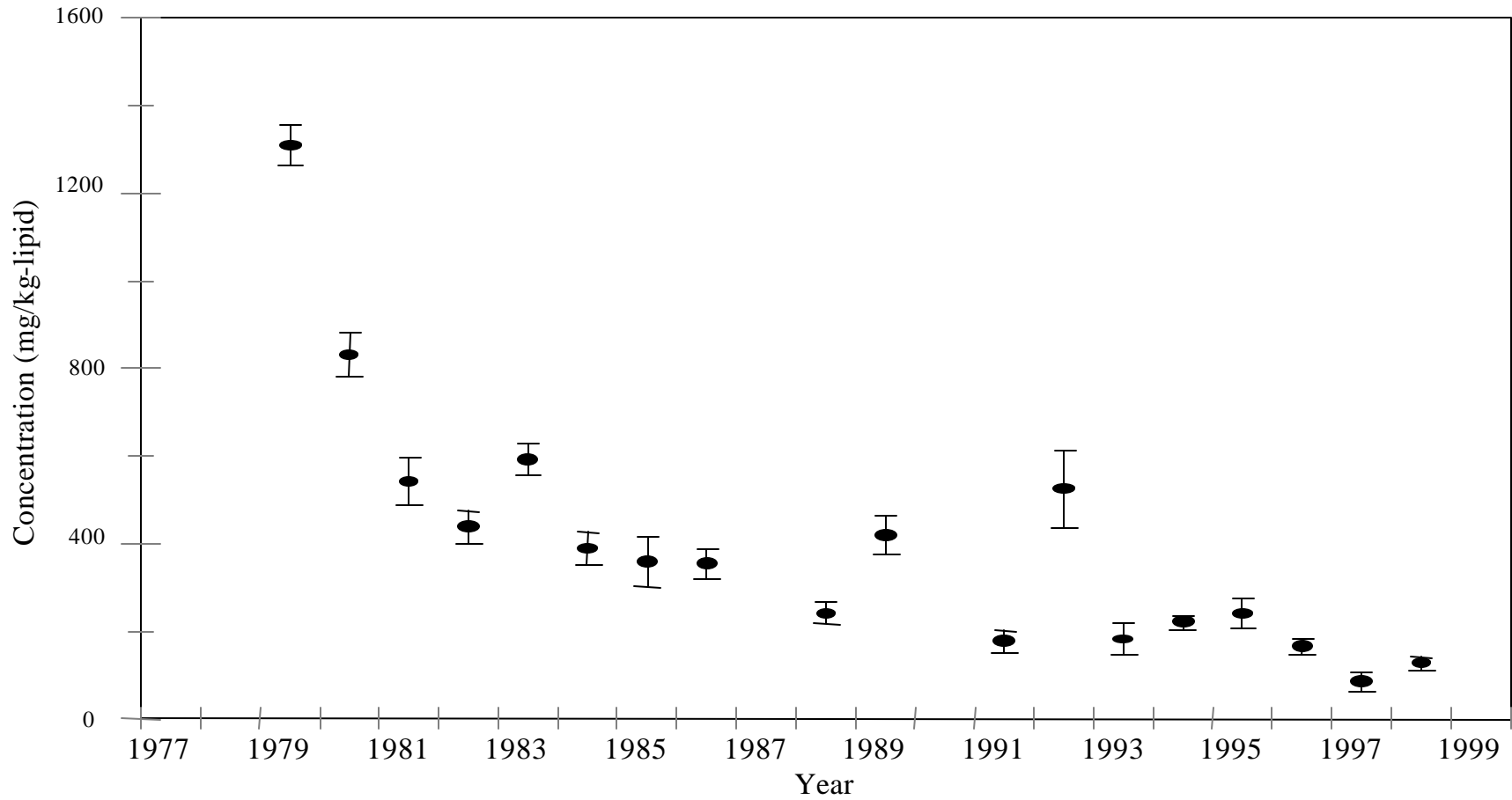
Figure 1-6. Total PCB Surface Sediment Concentrations from GE 1998-99 Samples in the Upper Hudson



Source: GE Database Release 000403

Figure 1-7

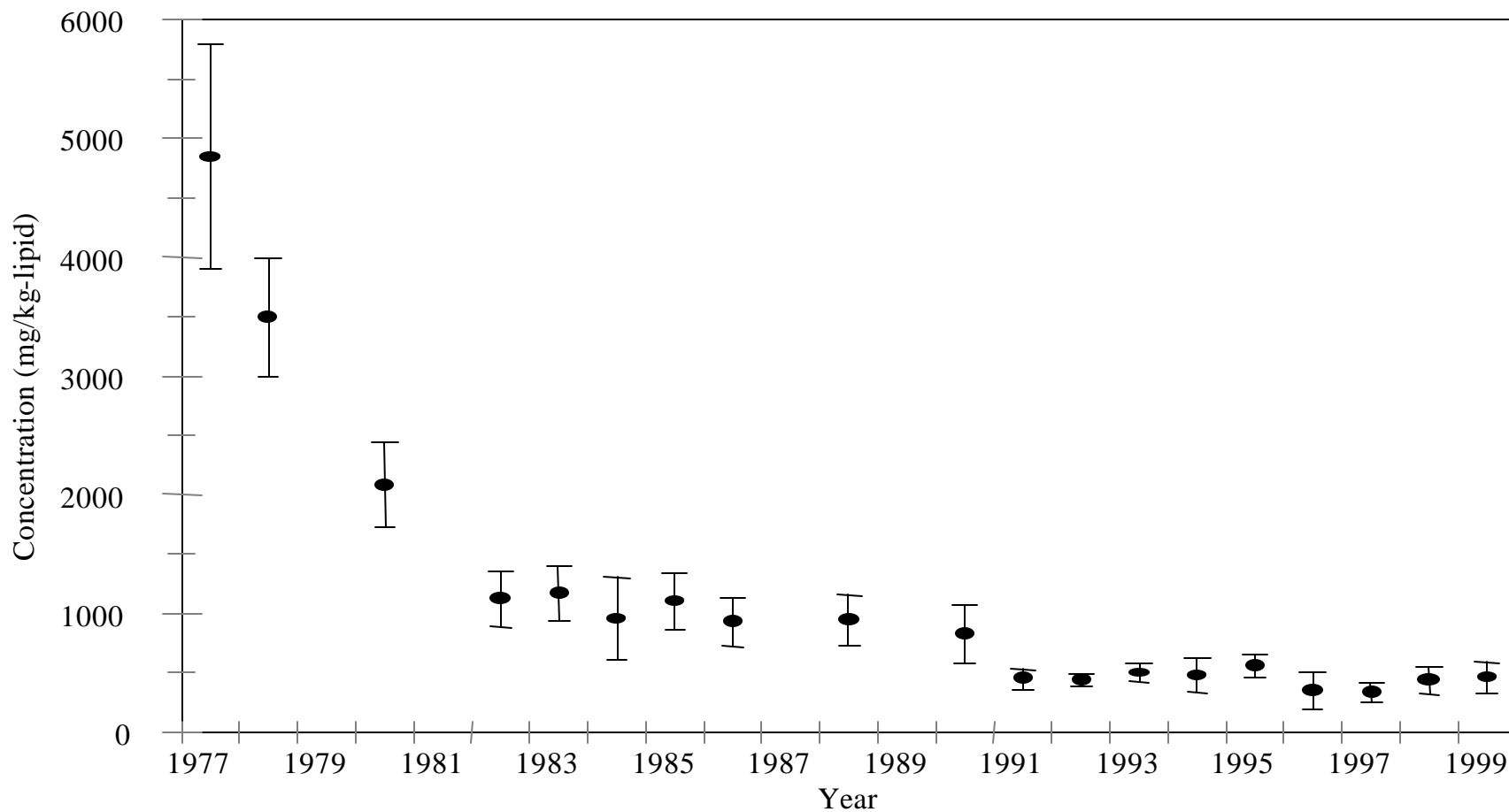
NYSDEC PCB Results for Pumpkinseed from Stillwater to Coveville, Converted to Tri+ Basis



Observations displayed as lipid-based mean concentration with 95% confidence limits on the mean. Source: NYSDEC Database Release 6_2000

Figure 1-8

NYSDEC PCB Results for Largemouth Bass from Stillwater to Coveville, Converted to Tri+ Basis



Observations displayed as lipid-based mean concentration with 95% confidence limits on the mean. Source: NYSDEC Database Release 6_2000