



UNITED STATES ENVIRONMENTAL PROTECTION AGENCY
WASHINGTON, DC 20460

OFFICE OF CHEMICAL SAFETY
AND POLLUTION PREVENTION

August 9, 2019

Richard Conn, Agent
CAP IM Supply, Inc.
c/o Conn & Smith, Inc.
6713 Catskill Road
Lorton, VA 22079-1113

Subject: Label Amendment – Revise the DFU to monthly application only of the product
Product Name: A2 for Dogs
EPA Registration Number: 91384-5
Application Date: 01-Aug-2019
Decision Number: 553970

Dear Mr. Conn:

The amended label referred to above, submitted in connection with registration under the Federal Insecticide, Fungicide and Rodenticide Act, as amended, is acceptable. This approval does not affect any conditions that were previously imposed on this registration. You continue to be subject to existing conditions on your registration and any deadlines connected with them.

A stamped copy of your labeling is enclosed for your records. This labeling supersedes all previously accepted labeling. You must submit one copy of the final printed labeling before you release the product for shipment with the new labeling. In accordance with 40 CFR 152.130(c), you may distribute or sell this product under the previously approved labeling for 18 months from the date of this letter. After 18 months, you may only distribute or sell this product if it bears this new revised labeling or subsequently approved labeling. "To distribute or sell" is defined under FIFRA section 2(gg) and its implementing regulation at 40 CFR 152.3.

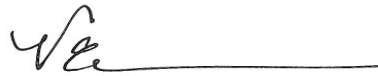
Should you wish to add/retain a reference to the company's website on your label, then please be aware that the website becomes labeling under the Federal Insecticide Fungicide and Rodenticide Act and is subject to review by the Agency. If the website is false or misleading, the product would be misbranded and unlawful to sell or distribute under FIFRA section 12(a)(1)(E). 40 CFR 156.10(a)(5) list examples of statements EPA may consider false or misleading. In addition, regardless of whether a website is referenced on your product's label, claims made on the website may not substantially differ from those claims approved through the registration process. Therefore, should the Agency find or if it is brought to our attention that a website contains false or misleading statements or claims substantially differing from the EPA approved registration, the website will be referred to the EPA's Office of Enforcement and Compliance.

Your release for shipment of the product constitutes acceptance of these conditions. If these conditions are not complied with, the registration will be subject to cancellation in accordance

Page 2 of 2
EPA Reg. No. 91384-5
Decision No. 553970

with FIFRA section 6. If you have any questions, please contact Dee Colby by phone at 703-347-8657, or via email at colby.deanna@epa.gov.

Sincerely,

A handwritten signature in black ink, appearing to read 'VE', followed by a horizontal line extending to the right.

Venus Eagle, Product Manager 01
Invertebrate and Vertebrate Branch 3
Registration Division (7505P)

Enclosure: Stamped Label

{NOTE TO REVIEWER: Optional text appears in brackets: [] - the final label may include some or all the optional text on front, back, side, or inside label panels. { } are for notes to reviewer and text location/positioning.}

{Front Panel}

A2 for Dogs

{Alternate Brand Names are listed at the end this draft label. The words “for Dogs” is included in each product name and will be at least 75% of the height of the largest letter in the product name. A large clear picture of a dog in the weight range of the product as packaged will be on the front panel. If an alternate brand name is used, it will substitute wherever A2 for Dogs appears in this label.}

Monthly Topical Treatment for Fleas on Dogs

{Only one of the following statements will appear on appropriate weight band market label prominently on front panel, enclosed in a box, as required per Agency’s pet spot-on mitigation measures.}

[For Use ONLY on Dogs and Puppies 7 Weeks and Older and Weighing 3-10 lbs] {for 0.4 mL tubes}

[For Use ONLY on Dogs and Puppies 7 Weeks and Older and Weighing 11-20 lbs] {for 1.0 mL tubes}

[For Use ONLY on Dogs and Puppies 7 Weeks and Older and Weighing 21-55 lbs] {for 2.5 mL tubes}

[For Use ONLY on Dogs and Puppies 7 Weeks and Older and Weighing over 55 lbs] {for 4.0 mL tubes}

Active Ingredients

% By Weight

Imidacloprid	9.10%
Pyriproxyfen	0.46%
Other Ingredients.....	90.44%
Total	100.00%

KEEP OUT OF REACH OF CHILDREN

WARNING

See back panel for First Aid, Precautionary Statements. For all information including Directions for Use and Storage and Disposal see package insert inside.

DO NOT USE ON CATS

Icon size 1.5cm x 1.5cm – background yellow with black text located in the lower right hand of package



Net Contents:

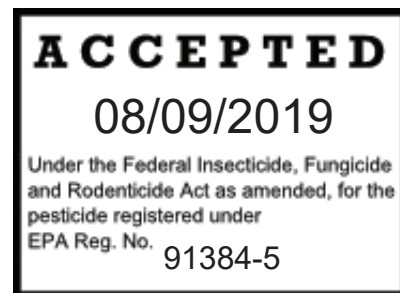
{For blister packaging with pre-filled tubes}

[[3][4][6][8] tubes, each 0.014 fl oz(0.4 mL)]

[[3][4][6][8] tubes, each 0 .034 fl oz (1.0 mL)]

[[3][4][6][8] tubes, each 0.085 fl oz (2.5 mL)]

[[3][4][6][8] tubes, each 0.135 fl oz (4.0 mL)]



{For screw top tube packaging}

[[3][4][6][8] tubes, each 0.014 fl oz(0.4 mL)]

[[3][4][6][8] tubes, each 0 .034 fl oz (1.0 mL)]

[[3][4][6][8] tubes, each 0.085 fl oz (2.5 mL)]

[[3][4][6][8] tubes, each 0.135 fl oz (4.0 mL)]

{Back Panel}

A2 for Dogs

Monthly Topical Treatment for Fleas on Dogs

For Use ONLY on Dogs and Puppies 7 Weeks and Older and Weighing [3-10 lbs][11-20 lbs][21-55 lbs][Over 55 lbs]

READ THE ENTIRE LABEL BEFORE EACH USE

For the Prevention and Treatment of Flea Infestations on Dogs

FIRST AID	
If In Eyes:	<ul style="list-style-type: none">• Hold eye open and rinse slowly and gently with water for 15-20 minutes.• Remove contact lenses, if present, after the first 5 minutes, then continue rinsing eye.• Call a poison control center or doctor for treatment advice.
If Swallowed:	<ul style="list-style-type: none">• Call a poison control center or doctor immediately for treatment advice.• Have person sip a glass of water if able to swallow• Do not induce vomiting unless told to do so by the poison control center or doctor.• Do not give anything by mouth to an unconscious person.
HOT LINE NUMBER	
Have the product container or label with you when calling a poison control center or doctor, or going for treatment. For medical emergencies call 1-855-844-4375.	
NOTE TO PHYSICIAN	
Treat the patient symptomatically.	

PRECAUTIONARY STATEMENTS

HAZARDS TO HUMANS

WARNING: Causes substantial but temporary eye injury. Harmful if swallowed. Do not get in eyes or on clothing. Wash hands thoroughly with soap and warm water after handling and before eating, drinking, chewing gum, using tobacco or using the toilet. Keep children and pets away from treated animal until treated area has dried.

HAZARDS TO DOMESTIC ANIMALS

For external use only. Do not use on puppies under 7 weeks of age or weighing less than [3 lbs][11 lbs][21 lbs][55 lbs]. Do not get this product in dogs' eyes or mouth. As with any product, consult your veterinarian before using this product on debilitated, aged, pregnant or nursing dogs. Individual sensitivities, while rare, may occur after using ANY pesticide product for dogs. If signs persist, or become more severe, consult a veterinarian immediately. If your dog is on medication, consult your veterinarian before using this or any other product.

Side Effects: Monitor your dog after application. Side effects may include signs of skin irritation such as redness, scratching, or other signs of discomfort. Gastrointestinal signs such as vomiting or diarrhea have also been reported. If these or other side effects (such as lethargy) occur, consult your veterinarian or call 1-855-844-4375.

{DO NOT USE ON CATS box will be located immediately below Side Effects box on back panel. Icon will be yellow with black images & text unless alternate color scheme is justified.}

DO NOT USE ON CATS. Keep cats away from treated dogs for 24 hours. If applied to a cat or ingested by a cat, contact your veterinarian immediately.

EPA Est. XXXXX-XXX-XX

EPA Reg No. 91384-5

For consumer questions call
1-888-261-4657

{Alternate numbers may be added for supplemental distributor brand names added through EPA Form 8570-5. All phone numbers will be monitored by representatives for CAP IM Supply, Inc. If an additional phone number is added for a distributor registration, it will forward if unanswered to the phone number above .}

For medical emergencies call 1-855-844-4375

Icon size 1.5cm x 1.5cm



[Sample – Not for [Re]Sale]

{When used, samples in cartons containing 3 or 4 tubes and in approved CRP configurations will bear the complete label.}

CAP IM Supply, Inc.
2825 East Cottonwood Pkwy, Suite 500
Salt Lake City, UT 84121

[Made in USA]

Lot No. 0000000 {Lot number may appear on the bottom of the package.}

{Insert}

A2 for Dogs

Monthly Topical Treatment for Fleas on Dogs

{Only one of the following statements will appear prominently on appropriate weight band market label enclosed in a box, as required per Agency's pet spot-on mitigation measures.}
[For Use ONLY on Dogs and Puppies 7 Weeks and Older and Weighing 3-10 lbs] {for 0.4 mL tubes}
[For Use ONLY on Dogs and Puppies 7 Weeks and Older and Weighing 11-20 lbs] {for 1.0 mL tubes}
[For Use ONLY on Dogs and Puppies 7 Weeks and Older and Weighing 21-55 lbs] {for 2.5 mL tubes}
[For Use ONLY on Dogs and Puppies 7 Weeks and Older and Weighing over 55 lbs] {for 4.0 mL tubes}

READ THE ENTIRE LABEL BEFORE EACH USE

<u>Active Ingredients</u>	<u>% By Weight</u>
Imidacloprid	9.10%
Pyriproxyfen	0.46%
Other Ingredients	90.44%
Total	100.00%

KEEP OUT OF REACH OF CHILDREN

WARNING

FIRST AID	
If In Eyes:	<ul style="list-style-type: none">• Hold eye open and rinse slowly and gently with water for 15-20 minutes.• Remove contact lenses, if present, after the first 5 minutes, then continue rinsing eye.• Call a poison control center or doctor for treatment advice.
If Swallowed:	<ul style="list-style-type: none">• Call a poison control center or doctor immediately for treatment advice.• Have person sip a glass of water if able to swallow• Do not induce vomiting unless told to do so by the poison control center or doctor.• Do not give anything by mouth to an unconscious person.
HOT LINE NUMBER	
Have the product container or label with you when calling a poison control center or doctor, or going for treatment. For medical emergencies call 1-855-844-4375.	
NOTE TO PHYSICIAN	
Treat the patient symptomatically.	

PRECAUTIONARY STATEMENTS

HAZARDS TO HUMANS

WARNING: Causes substantial but temporary eye injury. Harmful if swallowed. Do not get in eyes or on clothing. Wash hands thoroughly with soap and warm water after handling and before eating, drinking, chewing gum, using tobacco or using the toilet. Keep children and pets away from treated animal until treated area has dried.

HAZARDS TO DOMESTIC ANIMALS

For external use only. Do not apply to puppies under 7 weeks of age or weighing less than [3 lbs][11 lbs][21 lbs][55 lbs]. Do not get this product in dogs' eyes or mouth. As with any product, consult your veterinarian before using this product on debilitated, aged, pregnant or nursing dogs. Individual sensitivities may occur after using ANY pesticide product for dogs. If signs persist, or become more severe, consult a veterinarian immediately. If your dog is on medication, consult your veterinarian before using this or any other product.

Side Effects: Monitor your dog after application. Side effects may include signs of skin irritation such as redness, scratching, or other signs of discomfort. Gastrointestinal signs such as vomiting or diarrhea have also been reported. If these or other side effects (such as lethargy) occur, consult your veterinarian or call 1-855-844-4375.

DO NOT USE ON CATS. Keep cats away from treated dogs for 24 hours. If applied to a cat or ingested by a cat, contact your veterinarian immediately.

Icon size 1.5cm x 1.5cm

{Icon will be a black image as insert is printed in black ink on white paper.}



For consumer questions call
1-888-261-4657

{Alternate numbers may be added for supplemental distributor brand names added through EPA Form 8570-5. All phone numbers will be monitored by representatives for CAP IM Supply, Inc. If an additional phone number is added for a distributor registration, it will forward if unanswered to the phone number above .}

For medical emergencies call 1-855-844-4375

DIRECTIONS FOR USE

It is a violation of Federal Law to use this product in a manner inconsistent with its labeling. To prevent harm to you and your dog, read the entire label and package insert before each use. Follow all directions and precautionary statements carefully.

USE RESTRICTIONS:

- Use only on dogs and puppies 7 weeks and older and weighing [3-10 lbs][11-20 lbs][21-55 lbs][over 55 lbs].

- Do not use on animals other than dogs.
- Do not apply more than one (1) tube per treatment for one dog regardless of the dog's weight.
- Do not have contact or allow children or others to have contact with treated area until completely dry.
- Do not allow children to apply the product.
- Dog should be dry prior to application and keep dog dry for 24 hours after the application [for product to work effectively].

{This product has two alternative Child Resistant Packaging types listed here in the same sequence as illustrated below: 1) blister packaging with pre-filled tubes and 2) screw top tube.}

{For blister packaging with pre-filled tubes, the CRP is a strip of 3 or 4 blister pack with applicator tubes or a square blister containing 4 tubes and a strip of 3 blister pack ; SAUE opening instructions are on the blister and will not change in text or format from that used in testing.}

HOW TO OPEN

1. Remove one tube from package and hold in an upright position pointed away from your face.



2. Pull off cap. Turn the cap around and place on top.



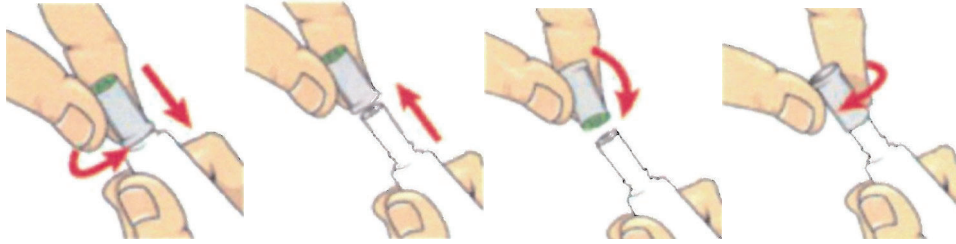
3. Simply press cap down to break the seal of the tube. Remove cap carefully.



{For screw top tube CRP packaging}

HOW TO OPEN

Remove inner tray from carton. Firmly grasp one tube and pull away from tray. Hold tube firmly in one hand. With the other hand, push down firmly on the cap and turn counter clockwise (to the left). Continue twisting cap until it comes off the tube. Turn the cap around and place opposite end of cap back on tube. Twist cap to break seal. Remove cap from tube.



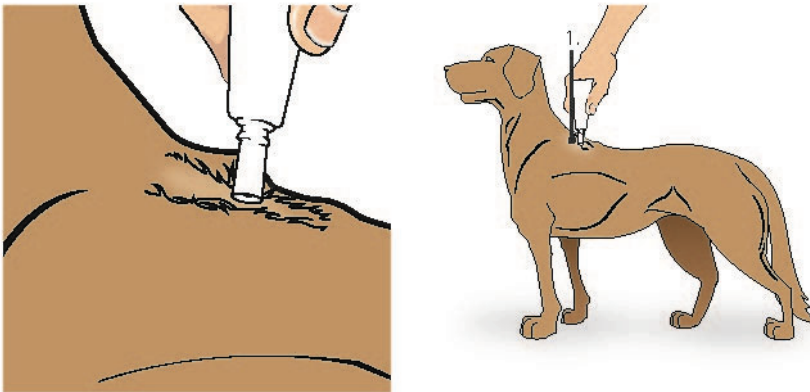
HOW TO APPLY

1. Prepare tube as shown in “How to Open”.
2. {The appropriate text will be used matching the carton weight class and each weight class will have its own separate insert.}

{3-10 lbs and 11-20 lbs}

Apply the entire contents of the [applicator]tube to one spot [as shown]:

{The following visual is optional for either type of CRP.}

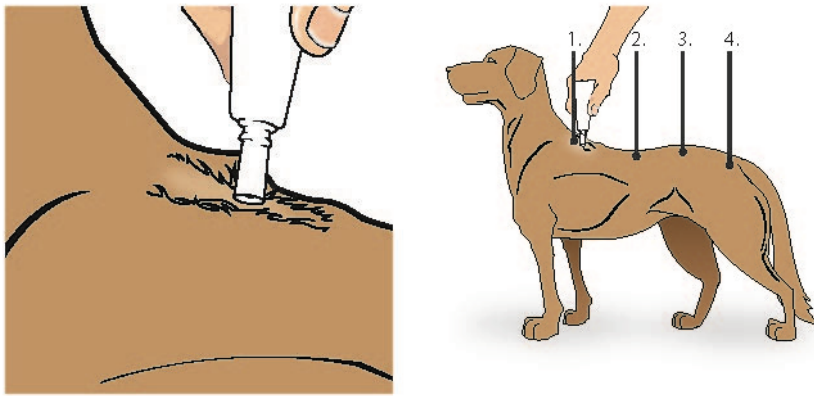


[Part the hair on the dog’s back between the shoulder blades until the skin is visible. Place the tip of the [applicator]tube on the skin and gently squeeze to apply all the contents to the skin.] [Part the dog’s hair and place the tip of the [applicator]tube behind the neck and between the shoulders. Squeeze the [applicator]tube thoroughly so that the entire contents are applied to one spot.] Do not apply an amount of solution at any one spot that could cause some of the solution to run off the side of the dog. Keep solution out of your dog’s eyes and do not allow your dog to ingest this product. Separate treated dog from other [dogs and cats][pets] for 24 hours after treatment has been applied.

{21-55 lbs and Over 55 lbs}

Apply the entire contents of the [applicator]tube evenly to three or four spots on the top of the back of the dog from the shoulder to the base of the tail [as shown]:

{The following visual is optional for either type of CRP.}



At each application site part the hair of the dog until the skin is visible. Place the tip of the [applicator][tube] on the skin and gently squeeze to apply the solution on the skin. Do not apply an amount of solution at any one spot that could cause some of the solution to run off the side of the dog. Keep solution out of your dog's eyes and do not allow your dog to ingest this product. Separate treated dog from other [dogs and cats][pets] for 24 hours after treatment has been applied.

3. Discard empty tube and packaging as described in the Storage and Disposal section.
4. Apply monthly for optimal control and prevention of fleas.

PRODUCT INFORMATION

The successive feeding activity of fleas on dogs frequently elicits a hypersensitivity skin disorder known as flea allergy dermatitis (FAD) or flea bite hypersensitivity. Treatment of dogs with A2 for Dogs rapidly kills fleas within 12 hours which may reduce the incidence of this condition.

A2 for Dogs kills existing fleas on dogs within 12 hours. Reinfesting fleas are killed within 2 hours with protection against further flea infestation lasting for four (4) weeks.

A2 for Dogs provides multi-stage flea control effectively breaking the flea life-cycle for lasting control of fleas.

A2 for Dogs kills adult fleas quickly, within 12 hours, inhibits the development of immature flea life stages and prevents them from reaching the biting adult stage.

A2 for Dogs is waterproof 24 hours after application and remains effective following a shampoo treatment, swimming, or after exposure to rain or sunlight.

Monthly treatments are required for optimal control and prevention of fleas on dogs.

STORAGE AND DISPOSAL

Do not contaminate water, food or feed by storage or disposal.

Pesticide Storage: Store in a cool, dry place inaccessible to children and pets.

Pesticide Disposal and Container Handling: Nonrefillable container. **If empty:** Do not reuse or refill this container. Place in trash or offer for recycling if available. **If partly filled:** Call your local solid waste agency for disposal instructions. Never place unused product down any indoor or outdoor drain.

{NOTE TO REVIEWER: A warranty statement of any kind is optional, but if a warranty statement is used, the following two alternative options are proposed:}

[LIMITED WARRANTY AND LIMITATION OF DAMAGES

IMPORTANT: READ BEFORE USE. Read the entire Directions for Use, Conditions of Warranties and Limitations of Liability before using this product. If these terms and conditions are not acceptable, return the unopened product container at once. By using this product, user or buyer accepts the following Disclaimer of Warranties and Limitations of Liability.

CONDITIONS: The directions for use of this product are believed to be adequate and must be followed carefully. However, it is impossible to eliminate all risks associated with the use of this product. Ineffectiveness, injury, and other unintended consequences may result because of such factors as manner of use or application (including misuse), the presence of other materials, weather conditions, and other unknown factors, all of which are beyond the control of CAP IM Supply, Inc.. All such risks shall be assumed by the user or buyer.

DISCLAIMER OF WARRANTIES: To the extent consistent with applicable law, CAP IM Supply, Inc. makes no other warranties, express or implied, of merchantability or of fitness for a particular purpose or otherwise, that extend beyond statements on this label.

LIMITATIONS OF LIABILITY: To the extent consistent with applicable law, neither CAP IM Supply, Inc., the manufacturer, nor the Seller shall be liable for any indirect, special, incidental or consequential damages resulting from the use, handling, application, storage, or disposal of this product. To the extent consistent with applicable law, the exclusive remedy of the user or buyer for any and all losses, injuries or damages resulting from the use, handling, application, or storage of this product, whether in contract, warranty, tort, negligence, strict liability or otherwise, shall not exceed the purchase price paid.]

[WARRANTY

To the extent consistent with applicable law, CAP IM Supply, Inc. and/or seller makes no warranty, expressed or implied, concerning the use of this product other than indicated on the label. Buyer assumes all risk of use resulting from the handling of this product. Seller shall return the purchase price or at the election of the seller replace the product.]

For consumer questions call
1-888-261-4657

{Alternate numbers may be added for supplemental distributor brand names added through EPA Form 8570-5. All phone numbers will be monitored by representatives for CAP IM Supply, Inc. If an additional phone number is added for a distributor registration, it will forward if unanswered to the phone number above .}

For medical emergencies call 1-855-844-4375

EPA Reg. No. 91384-5

CAP IM Supply, Inc.
2825 East Cottonwood Pkwy, Suite 500
Salt Lake City, UT 84121

{Blister Text - when CRP strip of 3 or 4 blister pack or 4 tube square blister with non-CRP tube is used to produce packages containing 3, 4, 6, and 8 tubes. Blister text will appear on each blister that contains tubes.}

{The following SAUE graphic demonstrating dotted line with scissors icon and arrow to peel back, will appear on the CRP blister pack:}



A2 for Dogs

[For use] ONLY [for use] on Dogs and Puppies 7 Weeks and Older and Weighing [3-10 lbs][11-20 lbs][21-55 lbs][Over 55 lbs]

See insert for complete product information.

{Only one of the following contains statements will appear}

[Contains [3][4][6][8] 0.014 fl oz(0.4 mL) tubes]

[Contains [3][4][6][8] 0.034 fl oz (1.0 mL) tubes]

[Contains [3][4][6][8] 0.085 fl oz (2.5 mL) tubes]

[Contains [3][4][6][8] 0.135 fl oz (4.0 mL) tubes]

Lot Code:

EPA Reg. No. 91384-5

EPA Est. No. XXXXX-XX-X

INTERNAL UNIT NOT FOR RETAIL SALE

ACTIVE INGREDIENTS:

Imidacloprid..... 9.10%

Pyriproxyfen..... 0.46%

OTHER INGREDIENTS:..... 90.44%

TOTAL:..... 100.00%

**KEEP OUT OF REACH OF CHILDREN
WARNING**



Read the entire label before use.

{Label on Individual Tube}

A2 for Dogs

9.10% Imidacloprid

0.46% Pyriproxyfen

For dogs and puppies over 7 weeks of age

[0.014 fl oz 3-10 lbs]

[0.034 fl oz 11-20 lbs]

[0.085 fl oz 21-55 lbs]

[0.135 fl oz OVER 55 lbs]

EPA Reg. No. 91384-5

KEEP OUT OF REACH OF CHILDREN {font size will comply with 40 CFR 156.60(b)}

WARNING {font size will comply with 40 CFR 156.60(b)}

Read the Entire Label Before Use

CAP IM Supply, Inc

Lot No. 0000000

[For external use ONLY] {Will include as room allows on the tube}

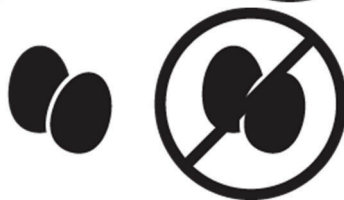
{OPTIONAL MARKETING CLAIMS}

1. For use on dogs and puppies 7 weeks of age and older and weighing [3-10 lbs][11-20 lbs][21-55 lbs][over 55 lbs]
2. A2 for Dogs contains imidacloprid, and [an/the] [insect growth regulator] [IGR] pyriproxyfen
3. For monthly flea prevention and treatment on dogs
4. A single topical application remains effective for [4 weeks] [a month]
5. Convenient, easy-to-apply topical solution
6. Convenient, easy-to-apply and fragrance free [monthly] [topical solution]
7. Once a month topical flea treatment for dogs and puppies 7 weeks of age or older and weighing [3-10 lbs][11-20 lbs][21-55 lbs][over 55 lbs]
8. A2 for Dogs is for the prevention and treatment of fleas on dogs and puppies 7 weeks of age and older and weighing [3-10 lbs][11-20 lbs][21-55 lbs][over 55 lbs]
9. For the treatment and prevention of flea infestations on dogs
10. One treatment prevents further flea infestations for [4 weeks] [a month]
11. Kills fleas on dogs within 12 hours and continues to prevent infestations for [four weeks] [a month]
12. Kills fleas within 12 hours of application
13. Stops existing flea infestations by killing adult fleas
14. Prevents [Stops] reinfestations by killing adult fleas so they can't lay eggs
15. [Prevents] [Stops] flea eggs from hatching [into biting adults]
16. Effectively breaks the flea life cycle
17. Effectively targets life stages of fleas after application
18. [Kills] [Controls] flea life stages
19. 3-way protection against fleas: [kills] [controls] adults, larvae, and eggs
20. [Prevents] [Stops] flea eggs [and flea larvae] from developing into [(biting) (adult)] fleas
21. Treatment with A2 for Dogs kills fleas which may cause flea allergic dermatitis [FAD] or flea bite hypersensitivity
22. Flea adulticide, larvicide, and ovicide
23. Kills flea eggs
24. Kills fleas on dogs
25. Kills flea larvae
26. Controls flea problems on dogs
27. Protection against fleas
28. Starts working through contact
29. Use flea prevention year-round
30. Contains an insect growth regulator (IGR) to kill flea eggs and prevent reinfestation
31. Monthly use of A2 for Dogs kills fleas which may cause [flea allergy dermatitis] [flea bite hypersensitivity]
32. Multi-stage flea control
33. Prevents re-infestations on treated dogs
34. Kills fleas which may serve as intermediate hosts for tapeworms
35. Remains effective after bathing and/or swimming
36. Remains effective following swimming and/or shampooing
37. Waterproof, after 24 hours
38. After application, the treated area may appear [wet][oily] for up to 24 hours
39. Remains effective after exposure to rain or sunlight

40. Fragrance-free
41. Unscented
42. In child-resistant packaging
43. Convenient [easy to use] applicator tube
44. Easy to use [applicator tube][tube]
45. 3 Pack [3 Tubes][3 Months' Supply][3 Doses]
46. 4 Pack [4 Tubes][4 Months' Supply][4 Doses]
47. 6 Pack [6 Tubes][6 Months' Supply][6 Doses]
48. 8 Pack [8 Tubes][8 Months' Supply][8 Doses]
49. 3 Applications
50. 4 Applications
51. 6 Applications
52. 8 Applications
53. Contains [3][4][6][8] tube[s]
54. [3][4][6][8] Doses [inside]
55. Value Pack {Stacking/wrapping or combining packages for Value marketing will not obscure mandatory language.}
56. Buy 3 get 1 free {Free tube will be included in the carton; only approved package configurations will be used for this claim}
57. [Calendar][Reminder] stickers [inside]
58. To help remind you when you last applied treatment, simply write in the date when each dose is applied:
 - a. First Dose _____
 - b. Second Dose _____
 - c. Third Dose _____
 - d. Xth Dose _____ {"X" corresponds to number of tubes in carton; only approved package configurations will be used for this claim}
59. Small Dog [3-10 lbs]
60. Medium Dog [11-20 lbs]
61. Large Dog [21-55 lbs]
62. Ex Large Dog [Over 55 lbs]



63. Illustration of adult flea



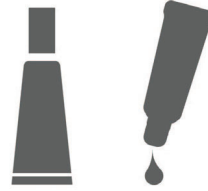
64. Illustration flea eggs



65. Illustration of flea larvae

66. Picture or illustration of a dog (or puppy)

67. New Product {"New Product" will only be used 6 months from the date EPA is notified of first use.}



68. Picture or illustration of the primary package (applicator tubes)

{OPTIONAL ACTIVE INGREDIENT REFERENCE STATEMENTS}

1. Contains the active ingredients imidacloprid and pyriproxyfen found in Advantage II [Small Dog][Medium Dog][Large Dog][Extra Large Dog]
 2. Contains imidacloprid and pyriproxyfen the active ingredients used in Advantage II [Small Dog][Medium Dog][Large Dog][Extra Large Dog]
 3. Contains the active ingredients used in Advantage II [Small Dog][Medium Dog][Large Dog][Extra Large Dog]
- {Whenever any of the three Reference Statements immediately above are included on the proposed label, the label will include the appropriate disclaimer below, which will be placed directly below the reference statements so that both are viewed together.}

A2 for Dogs is not manufactured by or distributed by Bayer Health Care LLC. Advantage II is a registered trademark of Bayer Health Care LLC

{TEXT FOR REMINDER STICKERS}

{NOTE TO REVIEWER: This entire section on reminder stickers is optional}

A2 for Dogs

The first time you treat your dog, place the First [Application] [Dose] Sticker on your calendar. Apply Stickers [2 and 3] [2, 3, 4] [2 through 6] [2 through 8] to the calendar [30 and 60 days] [monthly] [30, 60, and 90 days] [30, 60, 90, 120, and 150 days] [30, 60, 90, 120, 150, 180, and 210 days] [at the end of each 30-day period] after the first [application][dose] to remind you it's time to reapply A2 for Dogs.

First [Application] [Dose][Sticker]: [Apply] A2 for Dogs

Month 2 [Sticker]: [Apply] A2 for Dogs

Month 3 [Sticker]: [Apply] A2 for Dogs

Month 4 [Sticker]: [Apply] A2 for Dogs

Month 5 [Sticker]: [Apply] A2 for Dogs

Month 6 [Sticker]: [Apply] A2 for Dogs

Month 7 [Sticker]: [Apply] A2 for Dogs

Month 8 [Sticker]: [Apply] A2 for Dogs

For Customer Service please call
1-888-261-4657

{Alternate numbers may be added for supplemental distributor brand names added through EPA Form 8570-5. All phone numbers will be monitored by representatives for CAP IM Supply, Inc. If an additional phone number is added for a distributor registration, it will forward if unanswered to the phone number above .}

CAP IM Supply, Inc.
2825 East Cottonwood Pkwy, Suite 500
Salt Lake City, UT 84121

[Optional bar code]

{ALTERNATE BRAND NAMES}

{Each requested Alternative Brand Name is written to differentiate this new formulation and registration to the consumer from the previous product including assisting accurate tracking of consumer complaints and adverse events. The use of II, 2 and + are industry standard additions that consumers readily denote to formulations that contain both an active adulticide and an IGR.}

Provecta II for Dogs
Provecta 2 for Dogs
Provecta+ for Dogs
Provecta Flea Control for Dogs

Provecta Canine for Dogs
Provecta K9 for Dogs
Canine Provecta for Dogs
K9 Provecta for Dogs

para|Defense II for Dogs
para|Defense 2 for Dogs
para|Defense+ for Dogs
para|Defense Flea Control for Dogs

para|Defense Canine for Dogs
para|Defense K9 for Dogs
Canine para|Defense for Dogs
K9 para|Defense for Dogs