

UNITED STATES ENVIRONMENTAL PROTECTION AGENCY

~~3005469426~~
17/11

AUG 11 1994

Ms. J. Evelyn Lawson
Combat Insect Control Systems
P.O. Box 493
Pleaston, CA 94566-0803

Dear Ms. Lawson:

Subject: Amendment - Label
Combat Ant Killing Systems
EPA Registration No. 64240-3
Your Submissions dated June 27, and August 9, 1994

The labeling referred to above, submitted in connection with registration under the Federal Insecticide, Fungicide, and Rodenticide Act, as amended, is acceptable subject to the comments listed below. A stamped copy of the label is enclosed for your records.

1. Delete statements referring to the baits as attractants.
2. Under Copy L please specify for each statement that replacement of bait stations after
 - a. 3 months is for indoor use
 - b. 6 weeks is for outdoor use

Sincerely yours,

George T. LaRocca
Product Manager (13)
Insecticide-Rodenticide Branch
Registration Division (7505C)

Enclosure:

CONCURRENCES

SYMBOL							
SURNAME	<i>PL</i>						
DATE	3/11/94						

COPY A
KILLS THE

COPY B
KILL THE

COPY C
KILLS ANTS OUTDOORS BEFORE THEY COME INDOORS

COPY D
CONTAINS ____ CHILD-RESISTANT STATIONS
-or-
CONTAINS 12 CHILD-RESISTANT BAIT STATIONS AND STAKES

COPY E
Ants enter bait station and leave after eating bait inside.
-or-
This product will attract foraging worker ants to the bait feeding station. The ants will feed on the bait.

COPY F
Ants carry bait back to colony and kill queen and other ants.
-or-
Worker ants will take some of the bait back to the nest where they pass it on to kill the queen & entire colony.

COPY G
•This product kills the following ants which feed on sweet and greasy materials: Fire ants, Argentine, black carpenter, cornfield, little black, odorous house. and pavement ants.

• KILLS THE QUEEN AND THE ENTIRE COLONY
• NO INSECTICIDE ODOR
• KILLS COMMON OUTDOOR ANTS, INCLUDING FIRE ANTS
• ATTRACTS WORKER ANTS TO THE BAIT STATIONS

This product is easy to use and has no insecticide odor.

COPY H
Break COMBAT bait stations apart from plastic frame. Do not remove or puncture label on bait stations. Use all ____ bait stations at the same time for thorough control.
-or-
Break child-resistant bait feeding stations apart from the frame. Do not remove or puncture label on bait stations. For thorough ant control, use all 12 stations at the same time.

ACCEPTED
with COMMENTS
in EPA Letter Dated

AUG 11 1994
Under the Federal Insecticide, Fungicide, and Rodenticide Act as amended, for the pesticide registered under EPA Reg. No. 64240-3

COMBAT® Ant Killing System
EPA Reg. No. 64240-3

COPY I

Simply place each bait station by ant trails or close to areas where ants are numerous. Inside, COMBAT can be placed in cabinets, next to food and dishes, or anywhere your ant problem occurs. Do not spray the bait stations.

-or-

For general control of ants outdoors and to prevent them from coming indoors, place a bait station every 15-20 feet around the perimeter of your home. Place additional COMBAT bait stations near cracks or crevices, along sills, or anywhere ants may gain entry indoors. Do not spray insecticide on or around the bait stations.

COPY J

Outside your home, place additional COMBAT bait stations near cracks and crevices, along sills, or anywhere ants may gain entry.

-or-

Stations may be secured to the ground by pushing the stake through the hole in the corner of the station. The stake may be hammered in place if necessary. The station will be held more securely if the stake is pushed all the way in with the arm across the top of the station.

COPY K

Increased ant activity may be seen near the bait stations for short periods, but you can expect to see less activity within one week. For best results, do not interfere with the ants or the bait stations during its use because ants must carry bait back to the colony to kill the queen and the other ants.

-or-

Increased ant activity may be seen near the bait stations for short periods, but you can expect to see less activity within one week. For best results, do not interfere with the ants or the bait stations during its use because ants must carry bait back to the nest to kill the queen and the entire colony.

COPY L

Replace all bait stations after 3 months of use to keep ants from reappearing.

-or-

For continuous control of ants, replace all bait stations after 6 weeks of use.

COPY M

DISPOSAL: Wrap used bait stations and put in a garbage can.

-or-

STORAGE AND DISPOSAL: Do not contaminate water, food or feed by storage or disposal. Do not remove baits from station. Wrap used stations and put in a garbage can.

COMBAT[®]

**GUARANTEED
TO WORK!**



ANT KILLING SYSTEM

FOR INDOOR AND OUTDOOR USE.

**DESTROYS QUEEN
& ENTIRE COLONY**

ANTS CARRY BAIT BACK TO THE COLONY
TO DESTROY QUEEN AND OTHER ANTS
BEFORE THEY COME INSIDE YOUR HOME

CONTAINS CHILD-RESISTANT STATIONS

CAUTION • DO NOT ALLOW CHILDREN OR PETS
TO PLAY WITH THE BAIT STATIONS.

TOTAL NET WT

ACTIVE INGREDIENT: Hydramethylnon [tetrahydro-5,5-dimethyl-2(1H)-
pyrimidinone(3-[4-(trifluoromethyl)phenyl]-1-[2-[4-(trifluoromethyl)
phenyl]ethenyl]-2-propenylidene)hydrazone] 1.00%
INERT INGREDIENTS 99.00%

R-07165-1

COMBAT[®]

ANT KILLING SYSTEM



EPA Reg. No. 64240-3 EPA Est. No. 5813-MS-01
U.S. Patents Nos. RE 29,358; 4,087,525; 4,163,102;
4,353,907; 4,563,836; DES 278,842 and other patents pending.



Carton Made From 97%
Recycled Paperboard Minimum
35% Post-Consumer Content

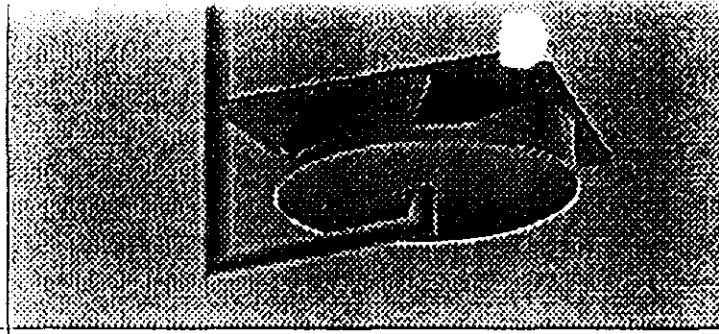
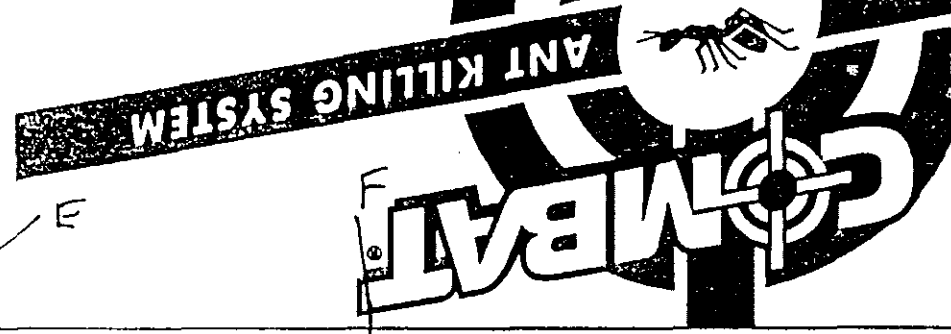
©1994 Distributed by
Combat Insect Control Systems
1221 Broadway
Oakland, CA 94612
MADE IN U.S.A.

COMBAT[®] CT.
PROOF OF PURCHASE

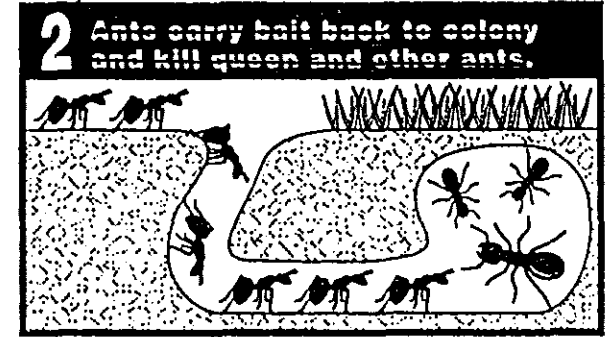
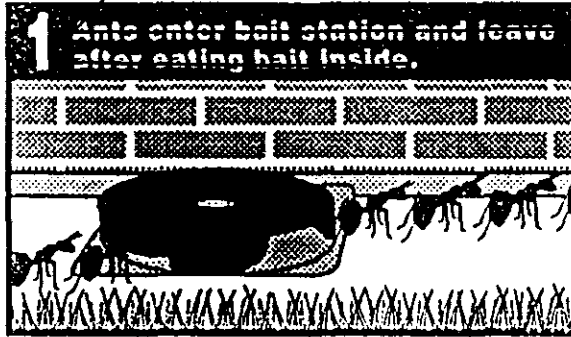
UPC CODE
41294-XXXX

COMBAT[®]

ANT KILLING SYSTEM



THIS IS HOW THE COMBAT® ANT KILLING SYSTEM WORKS:



EFFECTIVENESS GUARANTEED:
 COMBAT® stands behind this insect killing system with a full Satisfaction Guarantee. Should you have any questions regarding Combat®, please call 1-800-426-6228.

- The COMBAT Ant Killing System contains a totally unique insecticide ingredient which kills most ants commonly found in households. COMBAT® bait stations are effective because ants carry bait back to where they live to destroy queen and entire colony. It even kills ants you don't see outside of your home to prevent more ants from coming inside.
- ODORLESS
- CHILD-RESISTANT
- EASY-TO-USE ← G

DIRECTIONS FOR USE:

IT IS A VIOLATION OF FEDERAL LAW TO USE THIS PRODUCT IN A MANNER INCONSISTENT WITH ITS LABELING.
 (Note: do not remove or puncture white label on bait stations.)

DISPOSAL: Wrap used bait stations and put in trash.

1. Break COMBAT bait stations apart from plastic frame.
 -Use all ___ bait stations at the same time for thorough control. ← H
2. Simply place each bait station by ant trails or close to areas where ants are numerous.
 -Inside, Combat can be placed in cabinets, next to food and dishes, or anywhere your ant problem occurs. ← I
3. Outside your home, place additional COMBAT bait stations near cracks and crevices, along sills, or anywhere ants may gain entry. ← J
4. Increased ant activity may be seen near the bait stations for short periods and you can expect to see less activity within one week. For best results, do not interfere with the ants or the bait stations during its use because ants must carry the bait back to the colony to destroy the queen and other ants. ← K
5. Replace all bait stations after 3 months of use to keep ants from reappearing. ← L

5/5