



UNITED STATES ENVIRONMENTAL PROTECTION AGENCY
WASHINGTON, DC 20460

OFFICE OF CHEMICAL SAFETY
AND POLLUTION PREVENTION

March 9, 2020

Jennifer J. Klika
Regulatory Affairs Manager
Bell Laboratories Inc.
3699 Kinsman Blvd.
Madison, WI 53704

Subject: Label Amendment – Add California Specific Required Language
Product Name: PCQ Rodent Bait
EPA Registration Number: 12455-136
Application Date: December 5, 2019
Decision Number: 558244

Dear Ms. Klika:

The amended label referred to above, submitted in connection with registration under the Federal Insecticide, Fungicide and Rodenticide Act, as amended, is acceptable. This approval does not affect any conditions that were previously imposed on this registration. You continue to be subject to existing conditions on your registration and any deadlines connected with them.

A stamped copy of your labeling is enclosed for your records. This labeling supersedes all previously accepted labeling. **THE FOLLOWING HIGHLIGHTED SENTENCE IS ONLY TO YOU** You must submit one copy of the final printed labeling before you release the product for shipment with the new labeling. In accordance with 40 CFR 152.130(c), you may distribute or sell this product under the previously approved labeling for 18 months from the date of this letter. After 18 months, you may only distribute or sell this product if it bears this new revised labeling or subsequently approved labeling. "To distribute or sell" is defined under FIFRA section 2(gg) and its implementing regulation at 40 CFR 152.3.

Should you wish to add/retain a reference to the company's website on your label, then please be aware that the website becomes labeling under the Federal Insecticide Fungicide and Rodenticide Act and is subject to review by the Agency. If the website is false or misleading, the product would be misbranded and unlawful to sell or distribute under FIFRA section 12(a)(1)(E). 40 CFR 156.10(a)(5) list examples of statements EPA may consider false or misleading. In addition, regardless of whether a website is referenced on your product's label, claims made on the website may not substantially differ from those claims approved through the registration process. Therefore, should the Agency find or if it is brought to our attention that a website contains false or misleading statements or claims substantially differing from the EPA approved registration, the website will be referred to the EPA's Office of Enforcement and Compliance.

Page 2 of 2
EPA Reg. No. 12455-136
Decision No. 558244

Your release for shipment of the product constitutes acceptance of these conditions. If these conditions are not complied with, the registration will be subject to cancellation in accordance with FIFRA section 6. If you have any questions, please contact Melody Banks by phone at

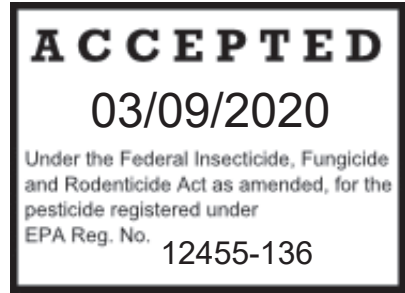
Sincerely,

A handwritten signature in blue ink, appearing to read "Gene Benbow".

Gene Benbow, Product Manager 7
Invertebrate & Vertebrate Branch 3
Registration Division (7505P)
Office of Pesticide Programs

Restricted Use Pesticide
DUE TO HAZARD TO NONTARGET ORGANISMS
For retail sale to and use only by Certified Applicators or persons under their direct supervision and only for those uses covered by the Certified Applicator's Certification.

P.C.Q.® Rodent Bait



- [Alternate Brand Names] P.C.Q.® Field Use
Ditrac® Field Use
P.C.Q.® Professional
P.C.Q.® Pro
P.C.Q.® for Professionals
P.C.Q.® II

***KILLS CALIFORNIA GROUND SQUIRRELS, MEADOW & PINE VOLES,
NORWAY RATS, ROOF RATS & HOUSE MICE***

Not approved the control of Meadow and Pine Voles in the State of California

ACTIVE INGREDIENT		
Diphacinone (CAS # 82-66-6)	0.005%
OTHER INGREDIENTS	<u>99.995%</u>
TOTAL	100.000%

EPA REG. NO. 12455-136
EPA EST. NO. 12455-WI-1^k
EPA EST. NO. 12455-WI-2^p
EPA EST. NO. 12455-WI-3^w
[superscript is first letter of lot number]

**KEEP OUT OF REACH OF CHILDREN
CAUTION**

NET CONTENTS: 4 to 50 lbs. (1.81 – 22.68 kg)

NET WEIGHT: 4 to 50 lbs. (1.81 – 22.68 kg)

Manufactured By:



Batch Code:

See back [bottom] [and] [side] panel[s] for
First Aid, additional Precautionary Statements, and Directions for Use.

Bold, italicized text is information for the reader and is not part of the label.
[Bracketed information is optional text.]
Text separated by / denotes and/or options.

FIRST AID HAVE LABEL WHEN OBTAINING TREATMENT ADVICE	
If Swallowed:	<ul style="list-style-type: none">• Call a poison control center, doctor, or 1-877-854-2494 immediately for treatment advice.• Have person sip a glass of water if able to swallow.• Do not give anything by mouth to an unconscious person.• Do not induce vomiting unless told to do so by the poison control center or doctor.
NOTE TO PHYSICIAN	
If swallowed, this material may reduce the clotting ability of the blood and cause bleeding. If ingested, administer Vitamin K ₁ intramuscularly or orally. Repeat as necessary based on monitoring of prothrombin times.	
TREATMENT FOR PET POISONING	
If an animal eats this bait, call a veterinarian or 1-877-854-2494 at once.	
NOTE TO VETERINARIAN	
Anticoagulant Diphacinone: For animals ingesting bait and/or showing poisoning signs (bleeding or elevated prothrombin times), give Vitamin K ₁ .	

PRECAUTIONARY STATEMENTS

Hazards to Humans and Domestic Animals

CAUTION: Harmful if swallowed. Keep away from children, domestic animals and pets.

All handlers (including applicators) must wear shoes plus socks, and waterproof gloves. Any person who retrieves carcasses or unused bait following application of this product must wear waterproof gloves.

User Safety Requirements

Follow manufacturer's instructions for cleaning/maintaining PPE. If no such instructions for washables exists, use detergent and hot water. Keep and wash PPE separately from other laundry. Remove PPE immediately after handling this product. Wash the outside of gloves before removing them. As soon as possible, wash hands thoroughly after applying bait and before eating, drinking, chewing gum, using tobacco or using the toilet and change into clean clothing.

ENVIRONMENTAL HAZARDS

This product is extremely toxic to birds, fish and other wildlife. Dogs, cats and other predatory and scavenging mammals and birds might be poisoned if they feed upon animals that have eaten this bait. Do not apply directly to water or to areas where surface water is present or to intertidal areas below the mean high water mark. Do not contaminate water when disposing of equipment wash water or rinsate.

Bold, italicized text is information for the reader and is not part of the label.

[Bracketed information is optional text.]

Text separated by / denotes and/or options.

ENDANGERED SPECIES CONSIDERATIONS

NOTICE: It is a Federal offense to use any pesticide product in a manner that results in the death of a member of an endangered species. The use of this product may pose a hazard to Federally designated endangered/threatened species. Suggested measures to protect endangered species in your area may exist in an EPA Interim Measures pamphlet. You may call EPA's Endangered Species Hotline, 1-800-477-3813, to find out if an Interim Measures pamphlet exists in your area and have one sent to you. You can also consult with your local area extension office or pesticide lead agency to determine whether they have imposed any requirements in your area to protect endangered and threatened species.

DIRECTIONS FOR USE

It is a violation of Federal law to use this product in a manner inconsistent with its labeling.

READ THIS LABEL: Read this entire label and follow all use directions and use precautions. Use only for the sites, pests, and application methods described on this label.

Do not sell this product in individual containers holding less than 4 pounds of bait.

USE RESTRICTIONS – For All Uses

Use only in rodent infested areas where exposure to agricultural crops will not occur. Do not contaminate food or food stuffs. Do not pile bait. Do not apply where contaminating food or surfaces that may contact food is likely. Do not apply bait by aircraft at sites where bait may contaminate bodies of water. When applying bait along canals, and other waterways, use equipment that directs bait away from the water.

NORWAY RATS ROOF RATS AND HOUSE MICE

IMPORTANT: Do not expose children, pets, or nontarget animals to rodenticides. To help prevent exposure:

1. Store unused product out of reach of children and pets.
2. Apply bait in locations out of reach of children, pets, domestic animals and nontarget wildlife, or in tamper-resistant bait stations. These stations must be resistant to destruction by dogs and by children under six years of age, and must be used in a manner that prevents such children from reaching into bait compartments and obtaining bait. If bait can be shaken from bait stations when they are lifted, units must be secured or otherwise immobilized. Stronger bait stations are needed in areas open to hooved livestock, raccoons, bears or other potentially destructive animals, or in areas prone to vandalism.
3. Dispose of product container and unused, spoiled or unconsumed bait as specified on this label.

USE RESTRICTIONS:

This product can only be used to control to control Norway rats, roof rats and house mice in and within 100 feet of man-made structures constructed in a manner so as to be vulnerable to commensal rodent invasions and/or to harboring or attracting rodent infestations. Examples of such structures include homes and other permanent or temporary residences, food processing facilities, industrial and commercial buildings, trash receptacles, agricultural and public buildings, transport vehicles (ships, trains, aircraft), docks and port or terminal buildings and related structures around and associated with these sites. Fence and perimeter baiting, beyond 100 feet from a structure as defined above, is prohibited. This product must not be applied directly to food or feed crops.

Bold, italicized text is information for the reader and is not part of the label.

[Bracketed information is optional text.]

Text separated by / denotes and/or options.

Do not place near or inside ventilation duct openings. Do not contaminate water, food, feedstuffs, food or feed handling equipment, or milk or meat handling equipment or surfaces that come into direct contact with food. When used in USDA inspected facilities, this product must be applied in tamper-resistant bait stations.

Tamper resistant bait stations are mandatory for outdoor, above-ground use. Tamper-resistant bait stations must be used if children, pets, non-target mammals, or birds may access the bait.

In active rodent burrows, apply this product to control Norway rats, and roof rats within or beyond 100 feet of buildings and man-made structures, provided that infestations of these rodents have been confirmed. Bait must be placed no less than 6 inches into active Norway/roof rat burrows. Do not broadcast bait. Because Norway/roof rat infestations may occur in areas farther than 100 feet from buildings and man-made structures when the rodents have ample supplies of food and cover, efforts should be made to remove food trash, garbage, clutter and debris.

SELECTION OF TREATMENT AREAS:

Determine areas where rats or mice will most likely find and consume the bait. Generally, these areas are along walls, by gnawed openings, in or beside burrows, in corners and concealed places, between floors and walls, or in locations where rodents or their signs have been seen. Protect bait from rain and snow. Remove as much alternative food as possible.

APPLICATION DIRECTIONS:

Rats:

Apply 4 to 16 ounces of bait per placement (usually at intervals of 15 to 30 feet). Maintain an uninterrupted supply of fresh bait for at least 10 days or until signs rat activity cease.

Apply 1 to 2 ounces of bait per placement deep into active rat burrows.

Mice:

Apply ¼ to ½ ounce [1 to 2 level tablespoons] of bait per placement. Space placements at intervals of 8 to 12 feet in infested areas. Larger placements, up to 2 ounces, may be used at points of extremely high mouse activity. Maintain an uninterrupted supply of fresh bait for at least 15 days or until signs mouse activity cease.

FOLLOW-UP:

Replace contaminated or spoiled bait immediately. Wearing waterproof gloves, collect and dispose of all dead, exposed animals and leftover bait. To discourage reinfestation, limit sources of rodent food, water, and harborage as much as possible. If reinfestation does occur, repeat treatment. Where a continuous source of infestation is present, establish permanent bait stations and replenish them as needed.

Bold, italicized text is information for the reader and is not part of the label.

[Bracketed information is optional text.]

Text separated by / denotes and/or options.

CALIFORNIA GROUND SQUIRRELS

USE RESTRICTIONS:

For control of California Ground Squirrels (*Spermophilus beechyi*) in industrial, commercial, and residential areas.

Product must be used in a **secured, tamper-resistant bait station** at the following sites: vineyards, fruit tree orchards (stone and pome), nut tree orchards, avocados, and citrus groves; rangeland and pastures; non-crop borders of the listed use sites as follows: outside of fence rows, rights-of-way, canal banks, ditch banks, highways, levees, railroad lines, utilities. It may also be used in and around man-made structures such as agricultural buildings (but not inside of pens), homes, other permanent or temporary structures; campgrounds, golf courses, parks, athletic fields, recreational areas; ornamental plants; lawns; commercial horticultural nurseries, and plantations of forest trees.

Product may also be applied by **spot baiting** applications at the sites listed above, but only during a **non-bearing phase** in vineyards, fruit tree orchards (stone and pome), and nut tree orchards.

Do not graze livestock or plant food or feed crops in spot-treated areas while bait is present. Do not apply by aerial application. Do not apply this product in a way that will contact workers or other persons, either directly or through drift. Only protected handlers can be in the area during application.

BAIT STATIONS:

Place secured tamper-resistant bait stations where California Ground Squirrel activity is present, usually near active burrows. Place bait stations up to 75 feet apart or near active burrows. Apply 2- 4 lb. of bait per bait station. Bait stations should be checked every 3-5 days and filled as necessary until signs of bait consumption has ceased.

SPOT BAITING:

Evenly scatter ¼ cup in a measuring cup (0.1 lb.) of bait no larger than 40-50 square feet (i.e. a circular area no more than 8 feet in diameter), around the active California Ground Squirrel burrows and runways. Do not over-bait. Do not place bait in piles. Using the same procedure, make a second application 4 days after the first. Do not apply more than 10 pounds per acre per year.

Surveillance and Follow-Up:

Dead ground squirrels should begin to appear in or near treated areas within 4 to 5 days after the first bait application. Visit the application site to monitor the effects of treatment 4 days after the first application and at subsequent intervals of 1 to 2 days. Wearing gloves, collect and properly dispose of visible carcasses of ground squirrels and other species found in or near treated areas. Dead animals buried on site must be buried a minimum of 18 inches below the ground surface, preferably deeper. Continue to collect and dispose of dead ground squirrels and search for non-target animals for at least 2 weeks after the last bait application, or longer if carcasses are still being found at that time. Carcass collection and burial should be performed in the late afternoon, near sundown, to reduce the potential for nocturnal, scavengers or predators to find carcasses on the ground surface. Wear gloves and use leakproof plastic bags or other suitable containers for transporting carcasses not buried on site. Where there is a continuous source of reinfestation, establish permanent bait stations and replenish bait as needed.

Bold, italicized text is information for the reader and is not part of the label.

[Bracketed information is optional text.]

Text separated by / denotes and/or options.

Not approved the control of Meadow and Pine Voles in the State of California

MEADOW AND PINE VOLES

INDUSTRIAL, COMMERCIAL, AND RESIDENTIAL AREAS

USE RESTRICTIONS:

For control of meadow voles (*Microtus pennsylvanicus*) and pine voles (*Microtus pinetorum*) in industrial, commercial, and residential areas. Areas include: in and around man-made structures such as agricultural buildings (do not apply in animal pens), homes & lawns (hand baiting into the burrow or tamper resistant bait station must be used for all residential uses and within 100 feet of a home), other permanent or temporary structures; campgrounds; golf courses; ornamental plants: commercial nurseries. If placed into a tamper-resistant bait station, may also be used in parks, athletic fields, and recreational areas.

Do not apply by aerial application. Do not apply this product in a way that will contact workers or other persons, either directly or through drift. Only protected handlers can be in the area during application.

BURROW BAITING: Identify surface trails and the mouths of holes leading to underground burrow systems. Place 1½ oz. (2 tablespoons) into each active burrow. Do not allow bait to be exposed on the surface. Do not disturb the runway system.

BAIT STATIONS: Place 2 lb. of bait in a tamper-resistant bait station in areas frequented by voles (near surface trails and burrows).

GROUND BROADCAST BAITING: Broadcast by hand or commercial spreader only within 100 feet of a man-made structure and only in commercial nurseries. Wear waterproof gloves during hand-broadcast operations. Apply 10 lb. per acre. For high population areas, make a second application (10 lb. per acre) one to two months later. For pine vole application in states east of the Mississippi River, a rate of 20 lb. per acre may be required. Do not exceed 20 lb. per acre per calendar year.

FRUIT TREE ORCHARDS (DORMANT)

USE RESTRICTIONS: For control of meadow voles (*Microtus pennsylvanicus*) and pine voles (*M. pinetorum*) in pome fruit and stone fruit tree orchards in the **states listed below***. Aerial application is only permitted in the following states where aerial is listed next to the state name. Apply only after fall harvest (including drops), before new spring growth and when no rain or snow is expected for three consecutive days. Do not graze animals in treated areas. ***Connecticut, Georgia, Idaho (aerial), Massachusetts, Michigan (aerial), Missouri, Montana (aerial), North Carolina, New Hampshire, Ohio (aerial), Oregon (aerial), Pennsylvania (aerial), South Carolina, Utah (aerial), Virginia (aerial), Vermont (aerial), Washington (aerial), and West Virginia (aerial).**

Do not apply this product in a way that will contact workers or other persons, either directly or through drift. Only protected handlers can be in the area during application.

BURROW BAITING: Identify surface trails and the mouths of holes leading to underground burrow systems. Place 1½ oz. (2 tablespoons) into each active burrow. Do not allow bait to be exposed on the surface. Do not disturb the runway system.

Bold, italicized text is information for the reader and is not part of the label.

[Bracketed information is optional text.]

Text separated by / denotes and/or options.

BAIT STATIONS: Place 2 lb. of bait in a tamper-resistant bait station in areas frequented by voles (near surface trails and burrows).

BROADCAST BAITING: Broadcast by hand, commercial spreader, or aerial (see use restrictions). Wear rubber gloves during hand-broadcast operations. Apply 10 lb. per acre. For high population areas, make a second application (10 lb. per acre) one to two months later.

STORAGE AND DISPOSAL

Do not contaminate water, food or feed by storage or disposal.

Pesticide Storage: Store only in original container in a cool, dry place inaccessible to children and pets. Keep containers closed and away from other chemicals.

Pesticide Disposal: Dispose of wastes resulting from the use of this product in trash or at an approved waste disposal facility.

Container Handling: Nonrefillable container. Do not reuse or refill this container.

[Plastic:] Offer for recycling or reconditioning; or puncture and dispose of in a sanitary landfill; or by incineration. In most states, burning is not allowed.

[Paper:] Dispose of empty container by placing in trash, or at an approved waste disposal facility or by incineration. In most states, burning is not allowed.

WARRANTY: To the extent consistent with applicable law, seller makes no warranty, expressed or implied, concerning the use of this product other than indicated on the label. Buyer assumes all risk of use and/or handling of this material when such use and/or handling is contrary to label instructions.

Bold, italicized text is information for the reader and is not part of the label.

[Bracketed information is optional text.]

Text separated by / denotes and/or options.

OPTIONAL MARKETING STATEMENTS:

Bulk Bait [Pellets][Pelleted] Formulation
California Ground Squirrel, Meadow & Pine
Vole, Norway Rat, Roof Rat and House Mouse
Bait [Pellets][Pelleted Bait]

*Not approved the control of Meadow and Pine Voles in
the State of California*

California Ground Squirrel [Meadow & Pine
Vole][Norway Rat][Roof Rat][House Mouse]
Bait [Pellets][Pelleted Bait]

*Not approved the control of Meadow and Pine Voles in
the State of California*

California Ground Squirrel, Meadow & Pine
Vole, Norway Rat, Roof Rat and House Mouse
Killer

*Not approved the control of Meadow and Pine Voles in
the State of California*

California Ground Squirrel [Meadow & Pine
Vole][Norway Rat][Roof Rat][House Mouse]
Killer

*Not approved the control of Meadow and Pine Voles in
the State of California*

Can [May] be used for multiple applications.

Can be Used Indoors or [and][&] Out

Contains [With] Diphacinone

Designed to be Used Indoors or [and][&] Out

Diphacinone

Field Rodent Bait [Pellets][Pellet
Bait][Pelleted][Pelleted Bait]

Field and Orchard Bait [Pellets][Pellet
Bait][Pelleted][Pelleted Bait]

For Use Indoors and [&] Outdoors

For Use in and [&] Around Homes and
Buildings

For Use in and [&] Around Agricultural
Buildings

For Use In and [&] Around Agricultural
Buildings and [&] Homes

For Use in Vineyards, Orchards, and Groves

For Use in Vineyards[Orchards][Groves]

Indoor and [&] Outdoor Use

Kills Listed Rodent Species

Kills California Ground Squirrels, Meadow & Pine
Voles, Norway Rats, Roof Rats and House Mice

*Not approved the control of Meadow and Pine Voles in the State of
California*

Kills California Ground Squirrels

Kills Meadow & Pine Voles

*Not approved the control of Meadow and Pine Voles in the State of
California*

Kills Norway Rats, Roof Rats and House Mice

Made in USA

Made [Manufactured] with Diphacinone; a Multiple-
Feed Rodenticide

Orchard Bait [Pellets][Pellet Bait][Pelleted][Pelleted
Bait]

Palatable Formula [Formulation]

Pellet [Bait]

Pellet Formula [Formulation]

Pelleted [Bait]

Pelleted Bait Formula [Formulation]

Pelleted Rodent Bait [Pellets][Pellet
Bait][Pelleted][Pelleted Bait]

Pelleted Formula [Formulation]

Proven Palatable Formula [Formulation]

Proven Palatability

Use Indoors and [&] Out

Results Guaranteed*

****BELL LABORATORIES, INC. GUARANTEE:***

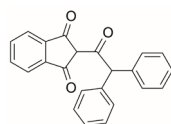
*If for any reason you, the consumer, are not satisfied
with this product, mail us your original proof of
purchase to obtain a full refund of your purchase
price."*

Bold, italicized text is information for the reader and is not part of the label.

[Bracketed information is optional text.]

Text separated by / denotes and/or options.

OPTIONAL GRAPHICS:



[Image of Diphacinone Structure]



Photo may not be representative of a label-consistent bait placement



Photo may not be representative of a label-consistent bait placement



[Image of Vole]



[Image of California Ground Squirrel]

Bold, italicized text is information for the reader and is not part of the label.

[Bracketed information is optional text.]

Text separated by / denotes and/or options.

OPTIONAL GRAPHICS:



Bold, italicized text is information for the reader and is not part of the label.
[Bracketed information is optional text.]
Text separated by / denotes and/or options.