

11930-3

10/9/2012

1/6



UNITED STATES ENVIRONMENTAL PROTECTION AGENCY
WASHINGTON, D.C. 20460

OFFICE OF CHEMICAL SAFETY
AND POLLUTION PREVENTION

October 9, 2012

Gil Manufacturing Co., Inc.
c/o H. R. McLane Inc.
7210 Red Road, Suite 206A
Miami, FL 33143-5321

Subject: Amended Reregistration Label
Product Name: Omego Mist OSC
EPA Registration Number: 11930-3
EPA Decision Numbers: 410339, 413761

Dear Dr. McLane:

The Agency, in accordance with the Federal Insecticide, Fungicide and Rodenticide Act (FIFRA), as amended, has completed reviewing all the information submitted with your application to support the reregistration of the referenced product in connection with the Permethrin and Piperonyl butoxide REDs and has concluded that your submission is acceptable.

NOTE: This product is not being reregistered under sections 3(c)5 and 4(g) of FIFRA at this time.

Please be reminded that 40 CFR Part 156.140(a)(4) requires that a batch code, lot number, or other code identifying the batch of the pesticide distributed and sold be placed on non-refillable containers. The code may appear either on the label or durably marked on the container itself, and can be added by non-notification per PRN 98-10.

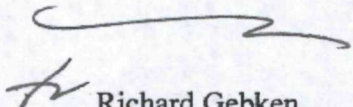
Please note that the record for this product currently contains the Confidential Statements of Formulation (CSFs) listed below. Any previously dated CSFs are superseded.

- Basic CSF, dated 12/12/2011

A copy of your label stamped "Accepted" is enclosed along with copies of the acute toxicity and product chemistry reviews completed for the subject product. Products shipped after 12 months from the date of this amendment or the next printing of the label whichever occurs first, must bear the new revised label. Your release for shipment of the product bearing the amended label constitutes acceptance of these conditions. If these conditions are not complied with, the registration will be subject to cancellation in accordance with FIFRA sec. 6(e).

If you have any questions about this letter, please contact Dana Pilitt, Ph.D. at (703) 305-7071 or via e-mail at pilitt.dana@epa.gov.

Sincerely,



Richard Gebken
Product Manager (10)
Insecticide Branch
Registration Division (7504P)

*Enclosures: Label stamped "Accepted", dated October 9, 2012
Acute Toxicity Review, dated March 5, 2012
Product Chemistry Review, dated February 14, 2012*

Restricted Use Pesticide

***Due to Toxicity to fish and aquatic organisms. For retail sale to and use only by Certified Applicators or persons under their direct supervision and only for those uses covered by the Certified Applicator's certification.**

OMEGO MIST™ OSC

For use only by Federal, State, Tribal, or local governmental officials responsible for public health or vector control, or by persons certified in the appropriate category or otherwise authorized by the State or Tribal lead pesticide regulatory agency to perform adult mosquito control applications, or by persons under their direct supervision. A Quick Knockdown, Low Odor, Non-Corrosive, Synergized, Synthetic Pyrethroid for the control of Adult Mosquitoes in Residential, Recreational, and Non-crop waste Areas. Also for use against Biting and Non-Biting Midges, and Black flies. Do not spray on or allow drift onto cropland, (other than those crops listed), or potable water supplies.

EPA Reg. No. 11930-3 EPA Est. No. 62778-AL-1

ACCEPTED
OCT - 9 2012
Under the Federal Insecticide, Fungicide, and Rodenticide Act, as amended, for the pesticide registered under EPA Reg. No. 11930-3

ACTIVE INGREDIENTS:
Permethrin; [CAS 52645-53-1] - - - - - 4.0%
Piperonyl Butoxide; [CAS 51-03-6] - - - - - 4.0%
OTHER INGREDIENTS: - - - - - 92.0%
*Contains a Petroleum Distillate Solvent. Total - - - - - 100.0%
*OMEGO MIST OSC Contains 0.291 lb. A.I. Permethrin and 0.291 lbs. A.I. Piperonyl Butoxide per gallon.

**KEEP OUT OF REACH OF CHILDREN
CAUTION**

"PRECAUCION AL USUARIO: Si usted no lee ingles, no use este producto hasta que la etiqueta haya sido explicado ampliamente" (If you do not understand the label, find someone to explain it to you in detail).

FIRST AID
IF SWALLOWED: Call a Poison Control Center or doctor immediately for treatment advice. Do not give any liquid to the person. Do not induce vomiting unless told to by a poison control center or doctor. Do not give anything by mouth to an unconscious person.
IF IN EYES: Hold eye open and rinse slowly and gently with water for 15 to 20 minutes. Remove contact lenses, if present, after the first 5 minutes, then continue rinsing eye. Call a poison control center or doctor for treatment advice.
HOT LINE NUMBER: Have the product container or label with you when calling a poison control center or doctor, or when going for treatment. You may also call 1-800-858-7378 for emergency medical treatment advice.

PRECAUTIONARY STATEMENTS
HAZARDS TO HUMANS AND DOMESTIC ANIMALS
CAUTION: Contains petroleum distillate. Harmful if swallowed, Harmful if absorbed through the skin. Causes moderate eye irritation. Avoid contact with skin, eyes or clothing. Prolonged or frequently repeated skin contact may cause allergic reactions in some individuals.

ENVIRONMENTAL HAZARDS
This pesticide is extremely toxic to aquatic organisms, including fish and invertebrates. Runoff from treated areas or deposition of spray droplets into bodies of water may be hazardous to fish and aquatic invertebrates. Before making the first application in a season, it is advisable to consult with the State or Tribal agency with primary responsibility for pesticide regulation to determine if other regulatory requirements exist. Do not apply over bodies of water (lakes, rivers, permanent streams, natural ponds, commercial fish ponds, swamps, marshes or estuaries), except when necessary to target areas where adult mosquitoes are present, and weather conditions will facilitate movement of applied material away from the water in order to minimize incidental deposition into the water body. Do not contaminate bodies of water when disposing of equipment rinsate or washwaters.
BEE WARNING: This product is toxic to bees exposed to direct treatment on blooming crops or weeds. Do not apply to or allow drift onto blooming crops or weeds when bees are visiting the treatment area, except when applications are made to prevent or control a threat to public and/or animal health determined by a State, Tribal or local health or vector control agency on the basis of documented evidence of disease causing agents in vector mosquitoes or the occurrence of mosquito-borne disease in animal or human populations, or if specifically approved by the State or Tribe during a natural disaster recovery effort.

PHYSICAL AND CHEMICAL HAZARDS
Do not use, pour, spill or store near heat or open flame.

DIRECTIONS FOR USE
RESTRICTED USE PESTICIDE
It is a violation of Federal law to use this product in a manner inconsistent with its labeling. For additional use instructions and to observe the required product use restrictions, refer to the Directions For Use continued section on this label.

STORAGE AND DISPOSAL
Do not contaminate water, food or feed by storage or disposal. **PESTICIDE STORAGE:** Store product in its original labeled container in a cool, dry, locked place designated for such insecticides and out of reach of children. Do not expose to extreme temperatures. In case of spillage, soak up with absorbent material such as sawdust, or fullers earth; sweep up and place in a labeled container and dispose of as follows. **PESTICIDE DISPOSAL:** Wastes resulting from the use of this product may be disposed of on site or at an approved wastes disposal facility. **CONTAINER DISPOSAL:** Nonrefillable; 1; 2½; 5; 30; 55 gallon container. Do not reuse or refill this container. Offer for reconditioning if appropriate. Refillable 275 gallon container. Refill this container with pesticide only. Do not use this container for any other purpose. Clean container promptly after emptying. (Metal) *Triple rinse or equivalent. Then offer for recycling or reconditioning or puncture and dispose of in a sanitary landfill or by other approved State and local procedures. (Plastic) *Triple rinse or equivalent. Then offer for recycling or reconditioning or puncture and dispose of in a sanitary landfill or incineration, or if allowed by State and local authorities, by burning. If burned, stay out of smoke. *Triple rinse as follows: Empty the remaining contents into application equipment or a mix tank. Fill the container ¼ full with water. Replace and tighten closures. Tip container on its side and roll it back and forth, ensuring at least one complete revolution, for 30 seconds. Stand the container on its end and tip it back and forth several times. Turn the container over onto its other end and tip it back and forth several times. Empty the rinsate into application equipment or a mix tank or store for later use or disposal. Repeat this procedure two more times.

Net contents
1 Gal. ___
2½ Gal. ___
5 Gals. ___
30 Gals. ___
55 Gals. ___
275 Gals. ___
Batch Code:
No. ___



Gil Manufacturing, Inc.
P.O. Box 242725 Montgomery, AL 36124 U.S.A.

4/6

ENGINEERING CONTROLS

Pilots must use an enclosed cockpit that meets the requirements listed in the Worker Protection Standard (WPS) for agricultural pesticides [40 CFR § 170.240(d)(6)]. Human flagging is prohibited. Flagging to support aerial application is limited to use of the "Global Positioning System" (GPS) or mechanical flaggers.

Mixers and loaders involved in aerial application must use a closed system designed by the manufacturer to enclose the pesticide to prevent it from contacting handlers or other people and which is used and maintained in accordance with the manufacturers' written operating instructions. Mixers and loaders using a closed system must wear protective eyewear if the system operates under pressure, and must have immediate available for use in an emergency, such as a broken package, spill, or equipment breakdown coveralls, chemical resistant gloves, chemical resistant footwear, chemical resistant apron and respirator of the specified in the PPE section on this labeling.

PERSONAL PROTECTIVE EQUIPMENT PPE:

All mixers, loaders, and handlers must wear coveralls over long-sleeved shirt and long pants, chemical-resistant gloves, (such as those made out of Barrier Laminate, Nitrile Rubber, Neoprene Rubber, or Viton), and footwear plus socks, chemical-resistant headgear (for overhead exposures), and a NIOSH-approved dust mist filtering respirator with MSHA/NIOSH approval number prefix TC21C or a NIOSH-approved respirator with any R, P, or HE filter. A chemical-resistant apron must be worn when mixing or loading, or when exposed to the concentrate.

Follow manufacturer's instructions for cleaning / maintaining PPE. If no such instructions for washables exist, use detergent and hot water. Keep and wash PPE separately from other laundry. Discard clothing and other absorbent materials that have been drenched or heavily contaminated with this product's concentrate. Do not reuse them. PPE may be available from "ULINE.COM" 1-800-295-5510.

OPTIONAL; PERSONAL PROTECTIVE EQUIPMENT diagrams.



DIRECTIONS FOR USE. continued RESTRICTED USE PESTICIDE

It is a violation of Federal law to use this product in a manner inconsistent with its labeling. Apply this product at temperatures greater than 50°F and wind speed equals or exceeds 1 m.p.h. Before making the first application in a season, it is advisable to consult with the State or Tribal agency with primary responsibility for pesticide regulation to determine if other regulatory requirements exist.

For use by Federal, State, Tribal, or local government officials responsible for public health or vector control, or by persons certified in the appropriate category or otherwise authorized by the State or Tribal lead pesticide regulatory agency to perform adult mosquito control applications, or by persons under their direct supervision.

"Do not retreat site more than once in 3 days. Do not exceed 25 applications at 0.007 lb. Permethrin per acre per application or 0.025 lb. PBO per acre per application, or 0.18 lb. of Permethrin per acre per season or 2.0 lbs PBO per acre per year.

When targeting *Aedes taeniorhynchus* and other difficult species applications of PBO may be made up to 0.08 lbs PBO per acre. More frequent treatments may be made to prevent or control a threat to public and / or animal health determined by a State, Tribal or local health or vector control agency on the basis of documented evidence of disease causing agents in vector mosquitoes or the occurrence of mosquito-borne diseases in animal or human populations, or if specifically approved by the State or Tribe during a natural disaster recovery effort.

Apply when wind speed is greater than 1 m.p.h.

Do not apply by fixed wing aircraft at a height less than 100 feet, or by helicopter at a height less than 75 feet unless specifically approved by the State or Tribe based on public health needs.

Aerial Application made at <200 feet above ground elevation.

See the additional ****Aerial Application** section on this label.

Spray equipment must be adjusted so that the volume median diameter product is less than 60 microns ($Dv\ 0.5 < 60\ \mu$) and that 90% of the spray is contained in droplets smaller than 100 microns ($Dv\ 0.9 < 100\ \mu$). The effects of flight speed and, for non-rotary nozzles, nozzle angle on the droplet size spectrum must be considered. Directions from the equipment manufacturer or vendor, pesticide registrant or a test facility using a wind tunnel and a laser-based measurement instrument must be used to adjust equipment to produce acceptable droplet size spectra. Application equipment must be tested at least annually to confirm that pressure at the nozzle and nozzle flow rate(s) are properly calibrated.

Ground-Based Application

See additional **Ground Based Uses** in "non-thermal", "thermal" and "barrier" sections on this label.

Spray equipment must be adjusted so that the volume median diameter is less than 30 microns ($Dv\ 0.5 < 30\ \mu$) and that 90% of the spray is contained in droplets smaller than 50 microns ($Dv\ 0.9 < 50\ \mu$). Directions from the equipment manufacturer or vendor, pesticide registrant or a test facility using a laser-based measurement instrument must be used to adjust equipment to produce acceptable droplet size spectra. Application equipment must be tested at least annually to confirm that pressure at the nozzle and nozzle flow rate(s) are properly calibrated.

μ = symbol for microns.

USER SAFETY REQUIREMENTS: Follow manufacturer's instructions for cleaning / maintaining PPE. If no such instructions for washables exist, use detergent and hot water. Keep and wash PPE separately from other laundry. Discard clothing and other absorbent materials that have been drenched or heavily contaminated with this product's concentrate. Do not reuse them.

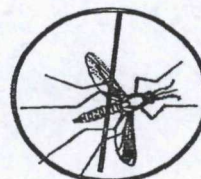
USER SAFETY RECOMMENDATIONS: Users should wash hands before eating, drinking, chewing gum, using tobacco or using the toilet. Users should remove clothing PPE immediately if pesticide gets inside. Then wash thoroughly and put on clean clothing. Users should remove PPE after handling this product. Wash the outsides of gloves before removing. As soon as possible, wash thoroughly and change into clean clothing.



PRECAUTIONS and RESTRICTIONS

- Do not apply this product in a way that will contact workers or other persons, either directly or through drift. Only protected workers may be in the area during application.

- When applying to Corrals, Feed Lots, Swine Lots, Poultry Ranges and Zoos, do not apply when food or feed is present. Remove or cover exposed food and drinking water before application.



HOW TO APPLY and WHEN TO USE RATES CHART NO. 1 FOR USE OF OMEGO MIST OSC UNDILUTED

CONDITIONS AND RATES TO USE OMEGO MIST OSC UNDILUTED for MOSQUITO CONTROL.					
Permethrin / PBO lbs. A.I. / Acre	Application Rates Fluid Ounces per Minute				Fluid Ounces and (milliliters) of product per acre
	5 mph	10 mph	15 mph	20 mph	
0.0070 / 0.0070	9.2933	18.5865	27.8798	37.17308	3.0977 (91.61 ml)
0.0035 / 0.0035	4.6644	9.3288	13.9932	18.6576	1.5548 (45.80 ml)
0.0010 / 0.0010	1.3275	2.6550	3.9825	5.3100	0.4425 (13.08 ml)

RATES CHART NO.2 - DILUTE 1 PART TO 1 PART MINERAL OIL

AMOUNTS TO USE AFTER DILUTING 1 PART OMEGO MIST OSC WITH 1 PART MINERAL OIL					
Permethrin / PBO lbs. A.I. / Acre	Application Rates Fluid Ounces per minute				Fl.Oz. (ml) of product per acre
	5 mph	10 mph	15 mph	20 mph	
0.0070 / 0.0070	18.5893	37.1786	55.7680	74.3673	6.1964 (183.25 ml)
0.0035 / 0.0035	9.2946	18.5892	27.8838	37.1784	3.0982 (91.62 ml)
0.0010 / 0.0010	3.6556	5.3112	7.9668	10.6224	0.8852 (26.18 ml)

PBO = abrev. for Piperonyl Butoxide

EPA Reg. No. 11930-3

EPA Est. No. 162778-AL-1

Apply when temperatures are above 50°F and wind speed is equal to, or is greater than 1 m.p.h. For proper ground application mount the fog applicator so that the nozzle is at least 4 1/2 feet above ground level and directed out the back of the vehicle. May be applied at speeds of 5 m.p.h. up to 20 m.p.h. Failure to follow these label directions may result in reduced effectiveness. For **Aerial Application refer to the **Aerial Application section on this label. OMEGO MIST OSC may be used as is, or diluted with a suitable solvent such as a 60 to 100 Second viscosity mineral oil and applied at a rate not to exceed 3.0982 fl. oz. of OMEGO MIST 4-4 OSC, per acre. Both aerial and ground applications should be made when the wind is less than 10 M.P.H. For exact rates, see the "UNDILUTED" or the "FOR DILUTION" Rates charts on this label.

OMEGO MIST OSC is recommended for application as an Ultra Low Volume (ULV) Thermal or Non-thermal aerosol (cold fog) to control adult mosquitoes, and other insects as listed on this label, in residential and recreational areas where these insect pests become a problem; such as, but not limited to parks, campsites, woodlands, athletic fields, golf courses, residential areas, municipalities, gardens, playgrounds, and non-crop waste areas. For best results; treat when mosquitoes or insects are most active and weather conditions are conducive to keeping the fog close to the ground. e.g. cool temperatures and wind speeds are not greater than 10 m.p.h. Applications during the cool hours of night or early morning are usually preferable. Repeat treatment when recommended by Public Health Officials or Mosquito Abatement Districts.

IMPORTANT: Do not re-treat a site more than once in 24 hours and no more than 2 applications should be made to a site in a 1 week period. Do not apply more than 0.185 lb. of permethrin per acre per year to any site. More frequent treatments may be made to prevent or control a threat to public and / or animal health determined by a state, tribal or local health or vector control agency on the basis of documented evidence of disease causing agents in vector mosquitoes or the occurrence of mosquito-borne disease in animal or human populations, or if specifically approved by the State or Tribe during a natural disaster recovery effort."

URBAN ULV MOSQUITO APPLICATIONS

For control of resting or flying adult mosquitoes, biting flies and biting midges in application sites of Residential, Municipal and Recreational areas such as utility tunnels, sewers, storm drains and catch basins, pipe chases, underground basements, underground passages, parking decks, crawl spaces or underground buildings. This product may be applied using mechanical foggers, hand-held or truck mounted ULV equipment suitable for these applications. Apply at rates, up to, but not exceeding, 0.007 lb. active ingredient permethrin per acre. See Rates Charts.

MAY BE APPLIED OVER THE FOLLOWING CROPS to CONTROL MOSQUITOES

OMEGO MIST 4-4 OSC may be applied over specific growing crops and range grasses prior to harvest for the control of adult mosquitoes and biting flies within or adjacent to these areas. Application can only be made where the following crops are present:

Alfalfa, Almond, Apple, Artichoke, Asparagus, Avocado, Broccoli, Cabbage, Cauliflower, Celery, Celuce, Cherry, Chenil, Chinese Amaranth, Chinese Broccoli, Collards, Corn (Field, Pop and Sweet),	Cucurbit Vegetable Group, Dandelion, Dock (sorrel), Eggplant, Endive (escarole), Fennel, Fibert, (hazelnut), Garden Purslane, Garden Cress, Garlic, Garland Chrysanthemum,	Head Lettuce, Horseradish, Leafy Vegetables, except brassica, Melons (Cantaloupe), Mushrooms, Onion, Drach (mountain spinach), Papaya, Parsley, Peach, Pear, Peppers (bell), Pistachio, Potato, Pumpkin,	Range Grasses, Rhubarb, Roquette (arugula), Soybeans, Spinach, Spinach (New Zealand), Squash (winter), Swiss Chard, Tomato, Turnip, Upland Cress, Walnut, Water Cress, Winter Purslane.
---	--	--	---

Do not spray on or allow drift onto cropland, (other than these crops listed), or potable water supplies.

GROUND APPLICATIONS ULV NON-THERMAL AEROSOL (COLD FOG)

To control Mosquitoes, Midges and Blackflies apply OMEGO MIST OSC using truck mounted ground ULV (cold fog) equipment. Spray equipment must be adjusted so the volume median diameter is less than 30 microns (Dv 0.5 < 30 microns) and that 90% of the spray is contained in droplets smaller than 50 microns (Dv 0.9 < 50 microns). Directions from the equipment manufacturer or vendor, pesticide registrant or a test facility using a laser-based measurement instrument must be used to adjust equipment to produce acceptable droplet size spectra. Application equipment must be tested at least annually to confirm that pressure at the nozzle and nozzle flow rate(s) are properly calibrated.

OMEGO MISTTM OSC

EPA Reg. No. 11930-3 EPA Est. No. 62788-AL-1

GROUND APPLICATIONS ULV NON-THERMAL AEROSOL (COLD FOG) (continued):
When applying this product undiluted, apply at a flow rate of 2.6550 to 18.5865 ounces per minute at an average vehicle speed of 10 M.P.H. These rates are equivalent to 0.001 to 0.007 pound of permethrin a.i. and 0.001 to 0.007 pound of piperonyl butoxide a.i. per acre. If a different vehicle speed is used, adjust the rate accordingly. Vary flow rates accordingly to vegetation density and mosquito population. Use higher flow rates in heavy vegetation or when insect populations are high. An accurate flow rate control system must be used to ensure proper flow rate. **OMEGO MIST OSC** may also be applied by diluting, 1 part to 1 part of a 60 to 100 second mineral oil or another suitable solvent, applied so as not to exceed the maximum a.i. rates per acre as shown in the rates charts. If an alternate dilution rate is required, adjust the flow rate accordingly, provided the droplet size and spectrum remain within label specifications. Do not exceed a flow rate of 20 oz. per minute unless recommended and required by equipment manufacturers and/or Public Health Officials for vehicle speeds of 10 to 20 m.p.h. and when the fogging equipment is capable of such higher rates of output per minute.

THERMAL AEROSOL FOGGING

Apply **OMEGO MIST OSC** diluted or undiluted by suitable Thermal Foggers mounted on trucks. If diluted use a 60 to 100 second viscosity mineral oil, or another suitable non-phytotoxic diluent, to reduce oil requirement and sludge buildup in equipment. May be applied at truck speeds from 5 m.p.h. to 20 m.p.h. but do not exceed the maximum active ingredient application rates. Spray equipment must be adjusted so the volume median diameter is less than 30 microns ($D_v 0.5 < 30$ microns), and that 90% of the spray is contained in droplets smaller than 50 microns. ($D_v 0.9 < 50$ microns), and that 90% of the spray is contained in droplets smaller than 50 microns ($D_v 0.9, 50$ microns). Directions from the equipment manufacturer or vendor pesticide registrant or a test facility using a laser based measurement instrument must be used to adjust equipment to produce acceptable droplet size spectra. Application equipment must be tested at least annually to confirm that pressure at the nozzle and nozzle flow rate(s) are properly calibrated. For use with Hand Carried and/or Lawn Mower thermal foggers, adjust the sprayer to apply the desired A.I. per acre based on a 50 foot swath and a walking speed of 2 m.p.h. Do not fog to wet foliage. Thermal fogging applications of **OMEGO MIST OSC** can be made to deliver 0.001 to 0.007 lb. of permethrin a.i. per acre and 0.001 lb. to 0.007 lb. piperonyl butoxide a. i. per acre.

USE AS AN INSECT BARRIER TREATMENT

For use in Non-Thermal ULV, motorized, portable, Backpack, Fog type Mist Blower equipment apply **OMEGO MIST OSC** with equipment adjusted to deliver ULV size droplets with a volume median diameter of 50 to 100 microns. **OMEGO MIST OSC** may be applied undiluted or diluted (see Application Rates Charts on this label. If diluted use a 30 to 100 second viscosity mineral oil, or another, (if recommended by Public Health Officials), suitable non-phytotoxic diluent. Use 0.001 to 0.007 pound Permethrin A.I. per acre at a 50 ft. (15.2 m) swath width, while walking at a speed of 2 m.p.h. (3.2 k.p.h.). Whether applied undiluted or diluted, or at a different speed, make sure that the same amount, (0.001 to 0.007 lb.) of Permethrin a.i. and Piperonyl Butoxide a.i. is applied per acre.

****AERIAL APPLICATION**

Make Ultra Low Volume aerial applications of **OMEGO MIST OSC** according to the application rate tables on this label. Spray equipment must be adjusted so that the volume median diameter produced is less than 60 microns ($D_v 0.5 < 60$ microns), and that 90% of the spray is contained in droplets smaller than 100 microns ($D_v 0.9 < 100$ microns). The effects of flight speed and, for non-rotary nozzles, nozzle angle on the droplet size spectrum must be considered. Directions from the equipment manufacturer or vendor pesticide registrant or a test facility using a wind tunnel and a laser-based measurement instrument must be used to adjust equipment to produce acceptable droplet size spectra. Application equipment must be tested at least annually to confirm that pressure at the nozzle and nozzle flow rate(s) are properly calibrated. Application should be made by suitable aerial U.L.V. equipment at an altitude ranging from 120 -175 feet depending on the terrain and weather conditions. The minimum spray boom height, (from the ground), for application by fixed wing or rotary aircraft shall be 100 feet. The recommended air speed for fixed wing aircraft with flat fan nozzles is from 120 to 160 m.p.h. For aircraft equipped with rotary nozzles, apply at sufficient airspeed to deliver the appropriate amount of **OMEGO MIST OSC** a.i. per acre. Do not exceed 0.007 lb. Permethrin a.i. per acre or 3.0977 undiluted fluid ounces per acre of **OMEGO MIST OSC** as listed in the Rates Charts on this label.

PROHIBITION ON AERIAL USE IN FLORIDA: Not for aerial application in the State of Florida unless specifically authorized by the Florida Bureau of Entomology and the Florida Department of Agriculture and Consumer Services.

NOTICE - READ ENTIRE LABEL BEFORE USING

Read the entire Directions for Use, Conditions, Disclaimer of Warranties, and Limitation of Liability before using this product. By using this product, user and buyer accept the following Conditions, Disclaimer of Warranties and Limitations of Liability. CONDITIONS: The directions for use of this product are believed to be adequate and should be followed carefully. However it is impossible to eliminate all risks associated with the use of this product. Injury, ineffectiveness or other unintended consequences may result because of such factors as weather conditions, presence of other materials, or the manner of use or application, all of which are beyond the control of GIL Mfg. Inc. All such risks shall be assumed by the user or buyer.

Disclaimer of Warranties: There are no warranties express or implied, of merchantability or of fitness for a particular purpose or otherwise, which extend beyond the statements made on this label.

No agent of GIL Mfg. Co., Inc. is authorized to make any warranties beyond those contained herein or to modify the warranties contained herein. GIL Mfg. Inc. disclaims any liability whatsoever for special, incidental, or consequential damages resulting from the use or handling of this product.

LIMITATION OF WARRANTIES: The exclusive remedy of the user or buyer for any and all losses, injuries or damages resulting from the use or handling of this product, whether in contract warranty, tort, negligence, strict liability or otherwise, shall not exceed the purchase price, or at GIL Mfg. Inc.'s option, the replacement of the product.

Gil Manufacturing, Inc. P.O. Box 242725 Montgomery, AL 36124 U.S.A.