

E.P.A. Registration No. 10147-7

ACTIVE INGREDIENTS

o-Dichlorobenzene 32.32%

Ammonium Lauryl Sulfate 5.14%

INERT INGREDIENTS 62.54%

100.00%

DANGER:

Keep out of reach of children

Harmful if swallowed or absorbed through the skin

Avoid breathing of vapor

Avoid contact with eyes, skin or clothing

Wash thoroughly after using

Avoid contamination of foodstuffs

FIRST AID

If swallowed, drink promptly a large quantity of milk, egg whites, gelatin solution, or if these are not available, drink large quantities of water. Avoid alcohol. Call a physician immediately.

KEEP FROM FREEZING

DO NOT ALLOW BIRKOLENE TO CONTACT MEAT OR FOODSTUFFS.

RINSE EMPTY CONTAINER THOROUGHLY WITH WATER AND DISCARD IT.

USE BIRKOLENE TO OBTAIN THESE ADVANTAGES

REDUCES BACTERIA NUMBERS OF SALMONELLA TYPHOSA, SALMONELLA CHOLERAESUIS, ESCHERICHIA COLI, and STAPHYLOCOCCUS AUREUS.

CLEANS AND SANITIZES - - FAST AND EASILY

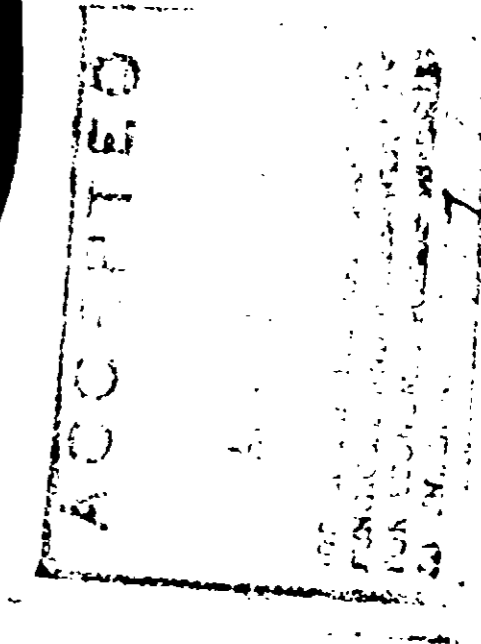
- DRAIN GRATINGS

- DRESSING ROOMS AND BATHROOMS

- FIXTURES, TOILETS, SHOWERS, WASH BASINS AND FLOORS

- OTHER GERM-RIDDEN AREAS

- DESTROYS DISAGREEABLE ODORS - - NOW!



Authorized for Health Inspection of Meat, Rabbit and drain lines

INSTRUCTIONS FOR USE:
BIRKOLENE OC using. For use in forty SOLUTION.

FOR MANUFACTURING CHEMICALS:
Scrub seats, stools with water, then solution for use.

FOR DEODORIZING BUILDINGS:
Check toilet or spraying BIRKOLENE

TO CLEAN TOILET ROOMS:
Use BIRKOLENE for toilet bowl and refresh

TO CLEAN AND DEODORIZE:
BIRKOLENE cleaning product either with about two gone and then

TO CLEAN AND DEODORIZE:
Pour about garbage can pour out sprayer. You freshened.

TO PROMOTE CESSPOOLS:
Initial purge OC per each one quart per Introduce in

BIRKOLENE OC

CLEANS - SANITIZES - DEODORIZES

CONTAINS BIODEGRADABLE DETERGENTS

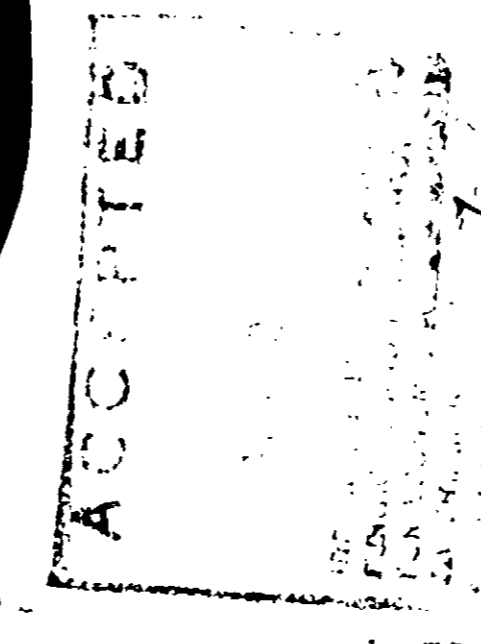
DANGER: KEEP OUT OF REACH OF CHILDREN

NOT FOR USE OR STORAGE AROUND THE HOME ENVIRONMENT

SEE LEFT SIDE OF LABEL FOR ADDITIONAL DANGERS AND FIRST AID STATEMENT

NET CONTENTS

GALLONS



Authorized for Use Under USDA Animal and Plant Health Inspection Service Program for Poultry, Meat, Rabbit and Egg Product Plants for sewage and drain lines, toilets, and dressing rooms.

INSTRUCTIONS FOR BIRKOLENE OC
BIRKOLENE OC must be mixed with water before using. For most purposes, mix one part of BIRKOLENE OC in forty parts of water. This is called BIRKOLENE SOLUTION. MIX THOROUGHLY BEFORE USING.

FOR MANUAL DEODORIZING AND CLEANING CHEMICAL TOILETS:
Scrub seats, floors and inside and outside of toilet stools with BIRKOLENE SOLUTION. Rinse with clear water, then wipe seats with sponge. Sweep excess solution from floors and the building is ready for use.

FOR DEODORIZING OF FLUSH TOILETS AND TOILET BUILDINGS:
Check toilet building odors and sanitize by washing or spraying the walls, ceiling, floor and roof with BIRKOLENE SOLUTION.

TO CLEAN AND SANITIZE SHOWERS AND REST ROOMS:
Use BIRKOLENE SOLUTION as recommended above for toilet buildings to keep facilities clean, sanitary and refreshed.

TO CLEAN AND SANITIZE PICNIC TABLES:
BIRKOLENE OC dissolves grease, so it is perfect for cleaning picnic tables. Apply BIRKOLENE SOLUTION either with a sponge or sprayer, allow to soak for about two minutes, wipe off. The grease will be gone and the table will be clean. Rinse with water.

TO CLEAN AND SANITIZE GARBAGE CANS:
Pour about a pint of BIRKOLENE SOLUTION into garbage can, scrub can with mop or brush, and pour out excess solution. OR, use your power sprayer. Your garbage cans will be clean and refreshed.

TO PROMOTE DRAINAGE OF SEPTIC TANKS, CESSPOOLS AND DRAIN FIELDS:
Initial purge treatment of two quarts of BIRKOLENE OC per each 1000 gallons of capacity. Thereafter, one quart per month per each 1000 gallon capacity. Introduce into stool furthest from septic tank.

BIRKOLENE OC

CLEANS - SANITIZES - DEODORIZES

CONTAINS BIODEGRADABLE DETERGENTS

DANGER: KEEP OUT OF REACH OF CHILDREN

NOT FOR USE OR STORAGE AROUND THE HOME ENVIRONMENT

SEE LEFT SIDE OF LABEL FOR ADDITIONAL DANGERS AND FIRST AID STATEMENT

NET CONTENTS

GALLONS

**BIRKO CHEMICAL CORPORATION, 5600 BRIGHTON BOULEVARD, DENVER, COLORADO
P. O. BOX 1315, DENVER, COLORADO 80201**