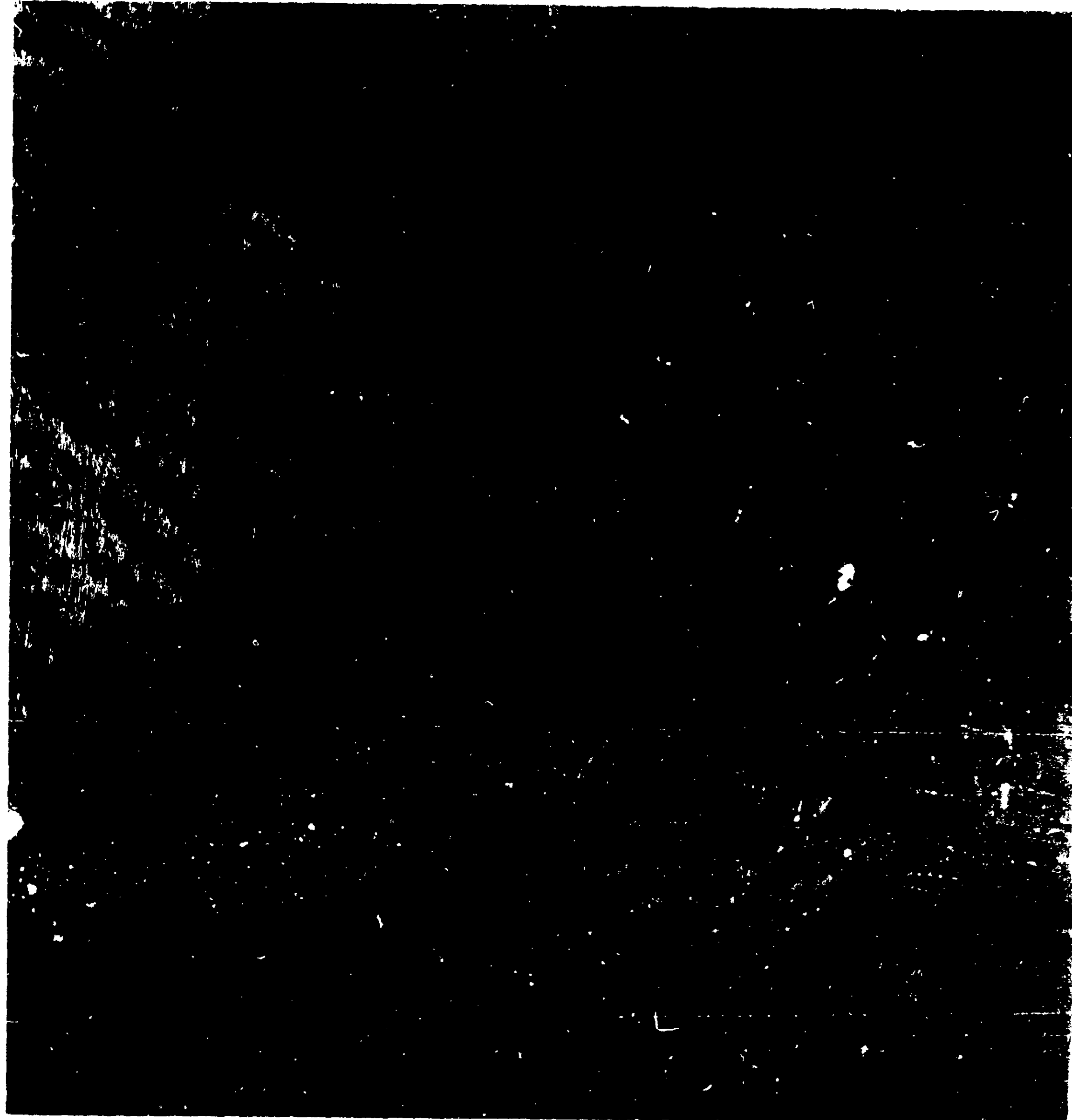


Pyramin[®] Plus



Pyramin[®] Plus



For post-emergence application on sugar beets

A wettable powder containing

Active ingredients: _____ 52.6%

Pyrazon (5-amino-4-chloro-2-phenyl-
3(2H)-pyridazinone) _____ 27.0%

Related aminochloro and dichlorophenyl
pyridazinones _____ 4.4%

Sodium salt of dalapon (equivalent to 18.5% by
weight of 2,2-dichloropropionic acid) _____ 21.2%

Inert ingredients: _____ 47.4%

CAUTION:

**KEEP OUT OF REACH OF CHILDREN.
HARMFUL IF SWALLOWED.**

See side panel for additional cautionary statements.

Net Weight 12 Pounds

BASF Corporation

New York, New York

PYRAMIN[®] is a registered trademark and product of Badische Anilin- & Soda-Fabrik
AG, Ludwigshafen am Rhein, Federal Republic of Germany.

CAUTION

Harmful if swallowed. Causes eye irritation—may cause skin irritation. Avoid contact with skin, eyes or clothing.

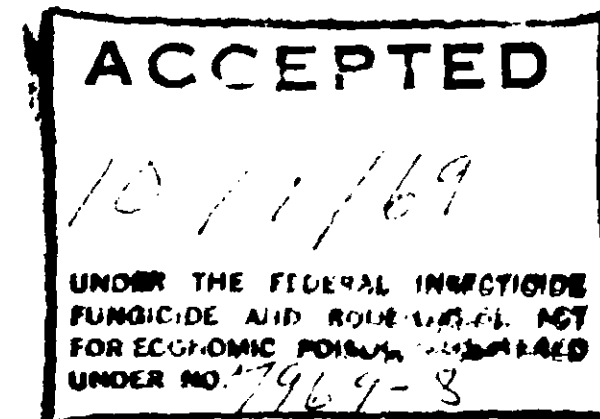
In case of contact, flush eyes with plenty of water for at least 15 minutes and get medical attention. For skin, remove contaminated clothing and wash skin with plenty of water.

Do not use same spray equipment for other purposes until thoroughly cleaned. Flush spray equipment with plenty of water immediately after use to avoid contamination of later sprays or possible corrosion. Coarse sprays are less likely to drift.

Do not store near fertilizers, seeds, insecticides, or fungicides. Do not contaminate water used for irrigation or domestic purposes.

Do not reuse empty container. Destroy by burying in a safe place.

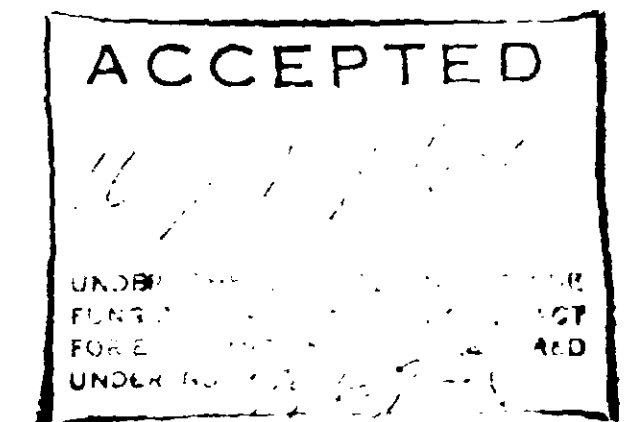
Do not use this product for purposes other than those recommended on this label.



WARRANTY

NOTICE TO BUYER—Seller warrants that the product conforms to its chemical description and is reasonably fit for the purpose stated on the label when used in accordance with directions under normal conditions of use, but neither this warranty nor any other warranty of merchantability or fitness for a particular purpose, express or implied, extends to the use of this product contrary to label instructions, or under abnormal conditions, or under conditions not reasonably foreseeable to seller, and buyer assumes the risk of any such use. The exclusive remedy of user or buyer and the limit of liability of BASF Corporation is the purchase price paid for the quantity of product involved.

USDA REG. NO. 7969-8
U.S. PATENT 3,210,353



Directions For Use

Among the weeds controlled by PYRAMIN Plus are lambsquarters, pigweed, ragweed, shepherdspurse, fanweed, purslane, nightshade, mustard, henbit, smartweed, nettle leaf goosefoot, foxtail, barnyard (water) grass, annual bluegrass.

This treatment may burn beet leaves or cause temporary stunting under some conditions. Do not apply when sugar beet foliage is wet.

If a pre-plant or pre-emergence application of Tillam or Ro-Neet is made prior to the use of this product, increased temporary sugar beet injury has been observed.

If PYRAMIN W was used as a pre-plant or pre-emergence application, do not use PYRAMIN Plus post-emergence, as excessive chemical residues may result.

Early Post-Emergence Applications

Where grass and broadleaf weeds are present, use PYRAMIN Plus on a band as recommended below. **Do not use broadcast treatments in dry, irrigated regions.**

Apply PYRAMIN Plus at the rate of 12 pounds per acre. For best results use 40 gallons spray solution per acre treated.

Timing is very important. Observe weed growth daily. Treat after beets have 2 expanded true leaves (do not count cotyledonary leaves). Treat before any weeds have more than 2 to 4 true leaves. Treatments on larger weeds will not be effective.

Good soil moisture prior to and at time of treatment is important for satisfactory weed control. If necessary, irrigate several days before expected treatment date. If sprinkler irrigation is used after treatment, do not apply more than 3/4 inch of water on the first set.

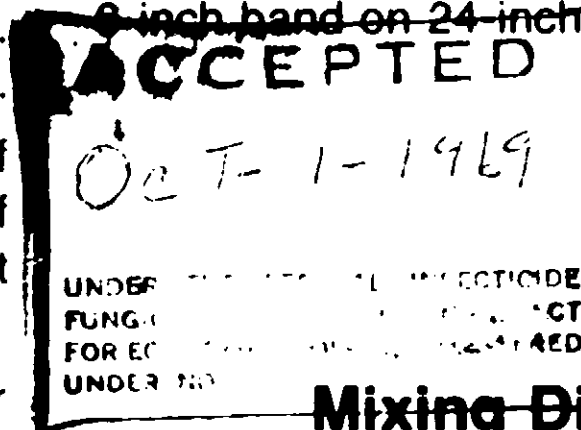
This product contains a surfactant. None need be added in the field.

Effectiveness of this product on soils with an organic matter content of more than 5% may be marginal.

Band Treatments

When spraying a band over the row the

Band and Row Width	Pounds PYRAMIN Plus Needed Per Banded Acre
7-inch band on 22-inch rows	3.8 lbs.
7-inch band on 28-inch rows	3.0 lbs.
6-inch band on 30-inch rows	2.4 lbs.
6-inch band on 24-inch rows	3.0 lbs.



7969-8

Mixing Directions

Fill spray tank with water until half full. Be sure the mechanical or hydraulic agitator and return lines or bypass outlets into the tank are below the surface of the water. Good mixing must be provided below the water surface but violent agitation at the surface can create excessive foam. A flow rate of approximately 5 gallons per minute at 40 pounds per square inch pressure will provide adequate hydraulic agitation. Information on a simple low cost hydraulic system is available on request.

While agitating, add the required amount of this product and the remaining water. For more rapid and uniform wetting of this product, wash it through a 20 mesh screen (ordinary window screen) placed in the tank opening. Flush the powder through the screen with a gentle, low pressure stream of water.

If excessive foaming occurs, add the recommended amount of a silicone defoamer to the mixing tank, such as Dow-Corning Antifoam A. (A small plastic pouch of this defoamer is enclosed in the top of each container of PYRAMIN Plus.)

Continue agitation during spraying. Mix only the amount of spray that will be used immediately.

Use 50 mesh screens in the line and Tee and #8004E nozzles or their equivalent.

If a pre-plant or pre-emergence application of Tillam or Ro-Neet is made prior to the use of this product, increased temporary sugar beet injury has been observed.

If PYRAMIN W was used as a pre-plant or pre-emergence application, do not use PYRAMIN Plus post-emergence, as excessive chemical residues may result.

Early Post-Emergence Applications

Where grass and broadleaf weeds are present, use PYRAMIN Plus on a band as recommended below. **Do not use broadcast treatments in dry, irrigated regions.**

Apply PYRAMIN Plus at the rate of 12 pounds per acre. For best results use 40 gallons spray solution per acre treated.

Timing is very important. Observe weed growth daily. Treat after beets have 2 expanded true leaves (do not count cotyledonary leaves). Treat before any weeds have more than 2 to 4 true leaves. Treatments on larger weeds will not be effective.

Good soil moisture prior to and at time of treatment is important for satisfactory weed control. If necessary, irrigate several days before expected treatment date. If sprinkler irrigation is used after treatment, do not apply more than $\frac{3}{4}$ inch of water on the first set.

This product contains a surfactant. None need be added in the field.

Effectiveness of this product on soils with an organic matter content of more than 5% may be marginal.

Band Treatments

When spraying a band over the row, the amount of PYRAMIN Plus applied per banded acre is proportional to the band width sprayed and the row spacing. Example: To spray a 7-inch band over beets in rows 28 inches apart, the amount of product applied is one-fourth of the amount used as a broadcast application. Thus, twelve pounds per acre rate $\times \frac{1}{4}$ of area actually sprayed = 3 pounds product used per acre.

OCT-1-1969
UNDER FEDERAL REGULATION
FUNGICIDE
FOR CONTROL OF WEEDS
UNDER NO. 7969-8

Mixing Directions

Fill spray tank with water until half full. Be sure the mechanical or hydraulic agitator and return lines or bypass outlets into the tank are below the surface of the water. Good mixing must be provided below the water surface but violent agitation at the surface can create excessive foam. A flow rate of approximately 5 gallons per minute at 40 pounds per square inch pressure will provide adequate hydraulic agitation. Information on a simple low cost hydraulic system is available on request.

While agitating, add the required amount of this product and the remaining water. For more rapid and uniform wetting of this product, wash it through a 20 mesh screen (ordinary window screen) placed in the tank opening. Flush the powder through the screen with a gentle, low pressure stream of water.

If excessive foaming occurs, add the recommended amount of a silicone defoamer to the mixing tank, such as Dow-Corning Antifoam A. (A small plastic pouch of this defoamer is enclosed in the top of each container of PYRAMIN Plus.)

Continue agitation during spraying. Mix only the amount of spray that will be used immediately.

Use 50 mesh screens in the line, and Tee-jet #8004E nozzles or their equivalent.

This spray mixture may entrap excessive amounts of air under vigorous agitation. Where high volume centrifugal or piston pumps are used, slower pump speed and having the end of the bypass hose continually covered by spray solution will reduce the problem. For accurate application rate, sprayers should be calibrated with the PYRAMIN Plus mixture in the spray tank.