



45%

Chlordane

Termite Killer

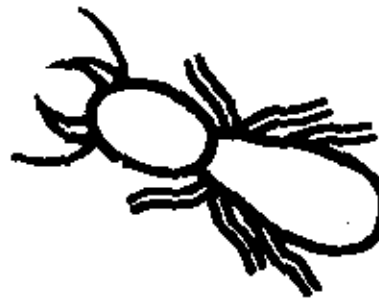
ACCEPTED
with COMMENTS
in EPA Letter Dated:

OCT 14 1982

Under the Federal Insecticide,
Fungicide, and Rodenticide Act
as amended, for the pesticide
registered under EPA Reg. No.
5887-127

For use around buildings

ACTIVE INGREDIENTS:
Technical Chlordane ... 45.3%
Petroleum Distillate ... 49.7%
INERT INGREDIENTS ... 5.0%
TOTAL ... 100.0%
Equivalent to 27.2% Octachloro-
4, 7-methanoctahydroindane
and 18.1% related compounds.
Contains 4.0 lbs. actual Chlor-
dane per gallon.



KEEP OUT OF
REACH OF CHILDREN

CAUTION

SEE LABEL FOR
STATEMENT OF PRACTICAL TREATMENT
AND ADDITIONAL PRECAUTIONARY
STATEMENTS

EPA, EST. NO. 5887-IL-1

EPA REG. NO. 5887-127

NET CONTENTS ONE-HALF GALLON

5887-127

**PRECAUTIONARY STATEMENTS
HAZARDS TO HUMANS
CAUTION**

May be fatal if swallowed. Do not breathe vapor, dust, or spray mist. Do not get in eyes, on skin or clothing. In case of skin contact, wash immediately with soap and water. Avoid contamination of feed and foodstuffs.

ENVIRONMENTAL HAZARDS

This product is toxic to fish, birds, and other wildlife. Birds feeding on treated areas may be killed. Keep out of lakes, streams and ponds. Do not apply where runoff is likely to occur. Do not apply when weather favors drift from treated areas. Do not contaminate water by cleaning of equipment or disposal of wastes. Apply this product only as specified on this label.

**PHYSICAL OR CHEMICAL HAZARDS
CAUTION**

Do not use, pour, spill or store near heat or open flame.

**STATEMENT OF PRACTICAL
TREATMENT**

IF SWALLOWED—Call a physician or Poison Control Center immediately. If possible, vomiting should be induced under medical supervision. Drink one or two glasses of water and induce vomiting by touching the back of throat with finger. Do not induce vomiting or give anything by mouth to an unconscious person.

IF INHALED—Remove victim to fresh air. Apply artificial respiration if indicated.

IF ON SKIN—Remove contaminated clothing and wash affected areas with soap and water.

IF IN EYES—Flush eyes with plenty of water. Call a physician immediately.

STORAGE AND DISPOSAL

STORAGE: Do not contaminate water, food or feed by storage or disposal.

CONTAINER DISPOSAL: Do not reuse empty container (bottle, can, bucket). Wrap (container) and put in trash collection.

NOTICE: Buyer assumes all risks of use, storage or handling of this material not in strict accordance with directions given herewith.

DISTRIBUTED BY
BLACK LEAF PRODUCTS COMPANY
ELGIN, ILLINOIS 60120
00921

INSTRUCTIONS FOR USE

It is a violation of Federal law to use this product in a manner inconsistent with its labeling.

Use **BLACK LEAF 45% CHLORDANE TERMITE KILLER** in a 1.0% water emulsion. This 1.0% emulsion can be made by adding 1 quart of **BLACK LEAF 45% CHLORDANE TERMITE KILLER** to 12 gallons of water, 2 quarts to 24 gallons of water, etc. This proportional emulsion should be applied as follows:

TERMITE CONTROL IN EXISTING STRUCTURES BUILDINGS HAVING BASEMENTS OR CRAWL SPACES: First remove all wood debris and wood forms. Around piers, pipes, chimney bases and along foundations of poured concrete dig a trench 6 inches wide and 4 inches deep. For brick and block foundations dig the trench about 12 inches deep. If footing is more than 12 inches deep, make holes with a crowbar, pipe or a rod about one foot apart that extends from the trench bottom to the top of the footing. Make holes closer in hard-packed clay soils. **NEVER DIG BELOW THE TOP OF THE FOOTING.** Apply the emulsion (or solution) in the trench at a rate of 4 gallons per 10 linear feet per foot of depth. Apply half of this to the back-fill. Likewise, treat along the inside of foundations of crawl-space buildings. Cover treated soil with a thin layer of untreated soil.

For raised porches, terraces, and entrance slabs, drill holes at one foot intervals, 8 inches from the foundation, and pour one-half gallon of emulsion (or solution) into each hole. Refill holes. Slabs with heat ducts or radiating heat pipes should be treated by commercial pest control operator.

The object is to establish a treated soil barrier which will prevent termite entry. Other critical areas may also require treatment, particularly if there are inaccessible areas, basements or slab-type construction. It is suggested that you contact the Agricultural Cooperative Extension Service for advice or consult a Commercial Pest Control Service.

Avoid contamination of public and private water supplies by following these precautions. Do not allow a hose or any type of faucet extension to reach into the termite chemical solution while filling or mixing this material with water. Use anti-back-flow or anti-siphonage equipment on all filling equipment. These devices can be purchased at hardware or plumbing supply stores. Use of anti-back-flow or anti-siphonage equipment will help to insure that the use of this toxic chemical will not contaminate domestic water supplies. Refer to Federal (Federal Housing Administration), state, and local specifications for safe distances of treatment areas from wells. Soil in the vicinity of wells, cisterns or ponds should not be treated if it is water saturated, subject to excessive saturation due to an accumulation of water or if the soil to be treated around the perimeter of the structure is at a grade lower than surrounding yard or property area. If this is the situation treat as follows: **Do Not Apply Under Pressure.** Soil should be removed to an area safe from well or domestic water contamination, treated, allowed to stand undisturbed for two to four hours then returned to the trench which has been lined with 4 mil. plastic sheeting. Be careful not to puncture the plastic sheeting when returning soil to the trench. Do not treat structures that contain cisterns or wells.

45% Chlordane
(see also reverse)

465/63032
17/2

TJP

OCT 14 1982

Black Leaf Products Company
667 North State Street
P. O. Box 418
Elgin, IL 60120

Attention: Russell Sawyer

Gentlemen:

Subject: Termiticide L.I.P.
Black Leaf 458 Chlordane Termite Killer
EPA Registration No. 5887-127
Your Application Dated March 9, 1982

The labeling referred to above, submitted in connection with registration under the Federal Insecticide, Fungicide and Rodenticide Act, as amended, is acceptable. A stamped copy is enclosed for your records.

At the next label printing, incorporate the following revisions:

1. In the Precautionary Statements, the subheading should read: **Hazards To Humans And Domestic Animals.**
2. In the Precautionary Statements, under the subheading **Environmental Hazards**, delete the following sentences which may appear:
 - o Birds feeding on treated areas may be killed.
 - o Birds and other wildlife in treated areas may be killed.
 - o Do not apply where runoff is likely to occur.
 - o Do not apply when weather favors drift from treated areas.
3. In the Precautionary Statements, under the subheading **Physical Or Chemical Hazards**, delete the signal word **CAUTION.**
4. Revise the Statement Of Practical Treatment to read:

STATEMENT OF PRACTICAL TREATMENT

If swallowed- Call a physician or Poison Control Center immediately. Gastric lavage is indicated if material was taken internally. **DO NOT INDUCE VOMITING;** vomiting may cause aspiration pneumonia.

-2-

If inhaled - Remove victim to fresh air. Apply artificial respiration if indicated.

If on skin - Remove contaminated clothing and wash affected areas with soap and water.

If in eyes - Flush eyes with plenty of water. Get medical attention immediately.

5. After the Misuse Statement and before the dilution directions, there should be a heading for the specific use directions which should read:

SUBNEBRANIAN TERMITES - DIRECTIONS FOR HOMEOWNER USE

Since this product is subject to the child-resistant (special) packaging regulations, submit a signed certification statement that the packaging complies with these requirements.

Refer to 40 CFR 162.16 "Pesticides Requiring Special Packaging" and the Federal Register Vol. 46, No. 41, Tuesday, March 3, 1981 pp. 15104-15109 "Clarification of Policy Issues on Special Packaging" for guidance and proper submission requirements.

Sincerely yours,

George T. LaRocca
Product Manager (15)
Insecticide-Rodenticide Branch
Registration Division (TS-767)

Enclosure

TS-767;LaRocca;DCR-38089;WANG-0565C;ext:Raven;479-2013;10/6/82

PRECAUTIONARY STATEMENTS CAUTION

HAZARDS TO HUMANS AND DOMESTIC ANIMALS

Harmful if swallowed or inhaled. Contact with skin can cause toxic symptoms. Do not swallow or inhale. Avoid contact with skin, eyes and clothing. Avoid contamination of food and foodstuffs. Do not feed thrashings, hullings or forage from treated crops to dairy animals or animals being finished for slaughter. Use only under well ventilated conditions.

ENVIRONMENTAL HAZARDS

This product is toxic to fish, birds, and other wildlife. Birds feeding on treated areas may be killed. Keep out of lakes, streams, and ponds. Do not apply where runoff is likely to occur. Do not apply when weather favors drift from treated areas. Do not contaminate water by cleaning of equipment or disposal of waste. Apply this product only as specified on this label.

STORAGE AND DISPOSAL

Do not contaminate water, food or feed by storage or disposal.

PESTICIDE DISPOSAL: Pesticide spray mixture or rinse water that cannot be used or chemically processed should be disposed of in a landfill approved for pesticides or buried in a place away from water supplies.

STORAGE: Keep container closed. Do not leave in sunshine.

CONTAINER DISPOSAL: Triple rinse, and offer for recycling, reconditioning, or disposal in approved landfill, or bury in a safe place.

BEST DOCUMENT AVAILABLE

DIRECTIONS FOR USE

It is in violation of Federal Law to use this product in a manner inconsistent with its labeling.

PRECONSTRUCTION SUBTERRANEAN TERMITE TREATMENT

Use a 1% water emulsion for subterranean termite. 1 (one) gallons of FORMULA 100 in 100 gallons of water produce a 1% water emulsion (or solution).

After grading is completed and prior to the pouring of the slab, slab supported/constructed porches or entrance platforms, make the following treatments. Applications shall be made by a low pressure spray for horizontal barriers over areas intended for covering floors, porches and other critical areas.

Establish a vertical barrier in areas such as around the base of foundations, plus 4 in. back-filled soil against foundation walls and other critical areas.

1. Where it is necessary to produce a horizontal barrier, apply the emulsion (or solution) at the rate of 1 gallon per 10 square feet to fill dirt. If fill is washed gravel or other coarse material, apply at 1-1/2 gallons per 10 square feet. It is important that the emulsion (or solution) reaches the soil substrate.
 - a. If concrete slabs cannot be poured over soil the same day it has been treated, a water-proof cover, such as polyethylene sheeting, should be placed over the soil. This is not necessary if foundation walls have been installed around the treated soil.
2. To produce a vertical barrier, apply the emulsion at the rate of 4 gallons per 10 linear feet per foot of depth.
 - a. Rodding and/or trenching applications should not be made below the top of the footing.
 - b. Trench need not be wider than 6 inches.
 - c. Rod holes should extend from the base of the trench to the top of the footing, and should be spaced (about a foot) to provide a continuous barrier.
 - d. Emulsion (or solution) should be mixed with the soil as it is being replaced in the trench. Cover treated soil with a layer of untreated soil, or other suitable barrier such as polyethylene sheeting.