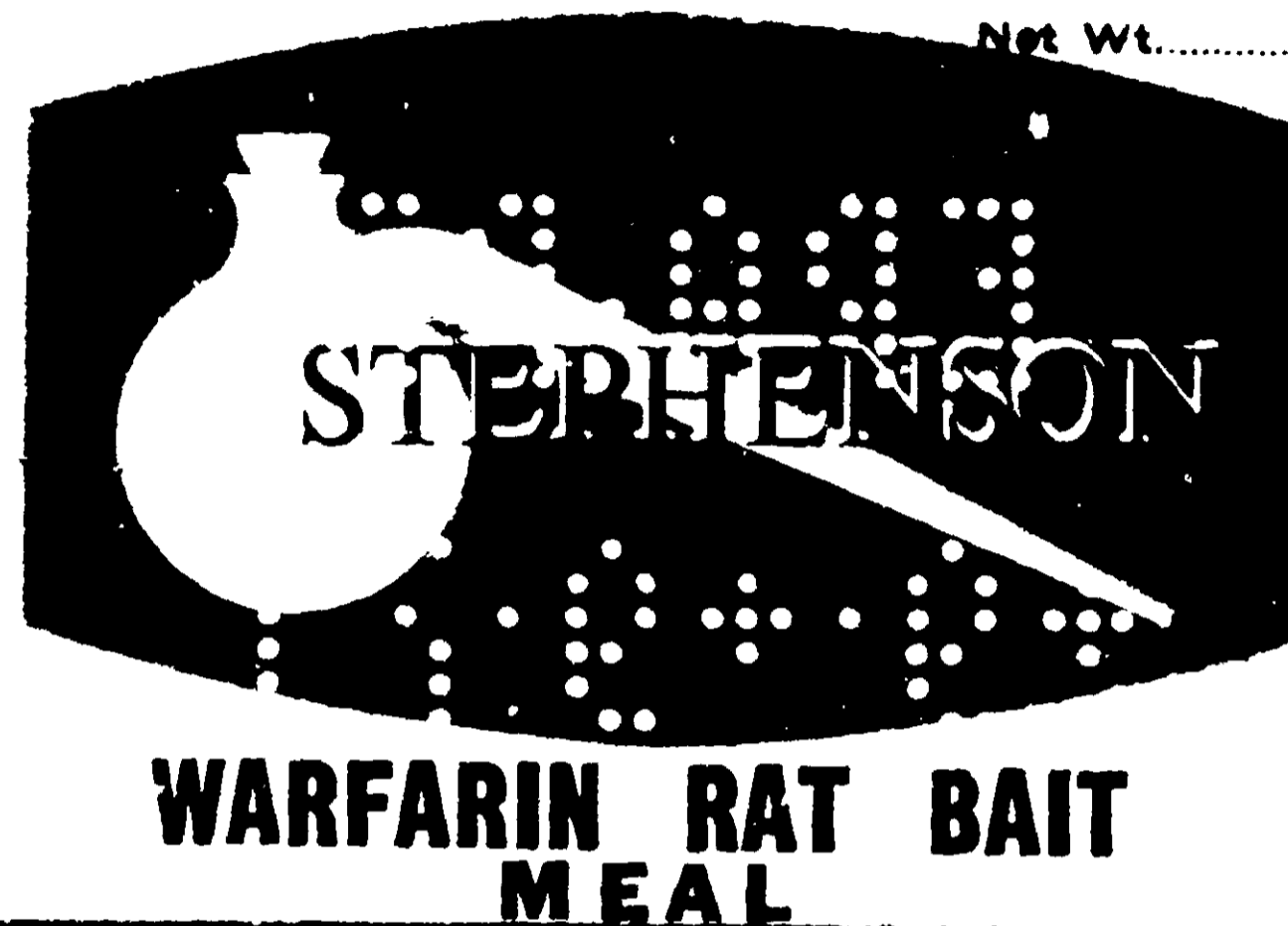
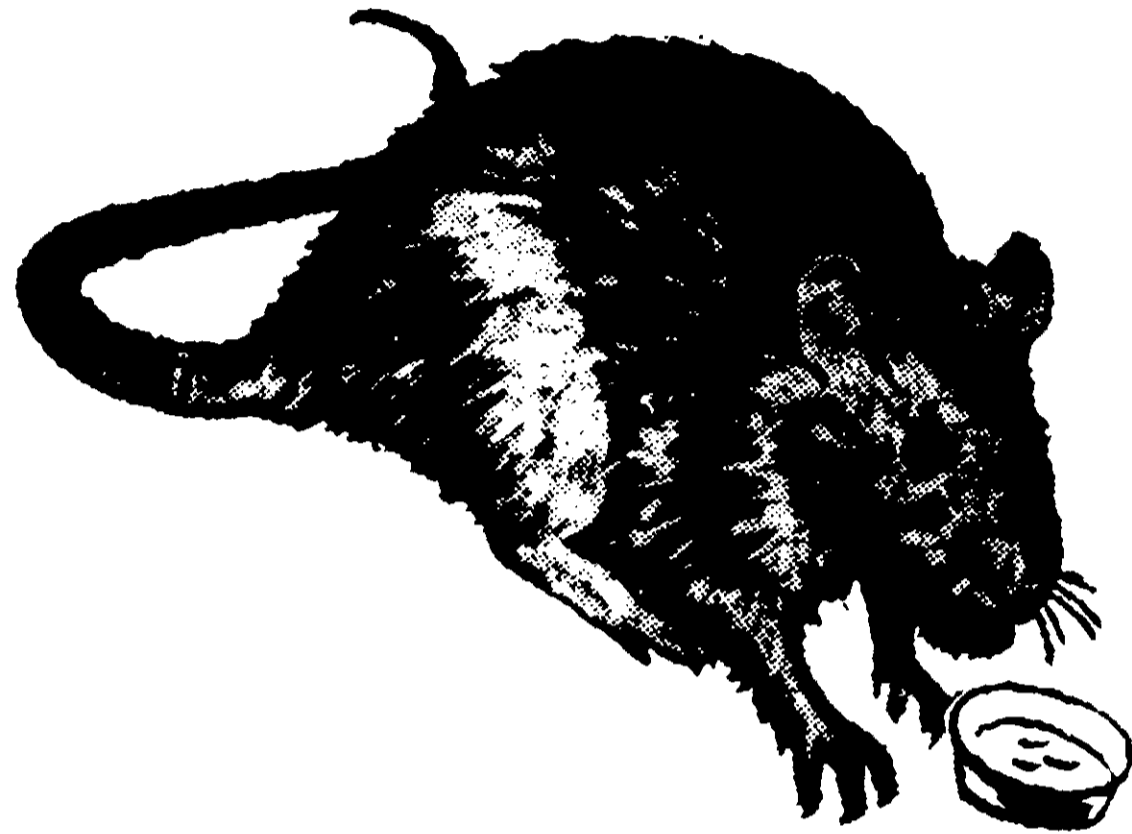


**A 1 lb. quantity
of this product
is sufficient to
control 4 or 5
rats or several
mice.**



Place bait in locations where rats and mice can be placed in locations not domestic animals or in source of infestation is stations should be established. Baits that are sour, mold placed promptly.

Place 4 oz. to 1 lb. of STEPHENSON RAT BAIT where rats are known continuous until complete 14 DAYS. NEVER LET A THAN 18 HOURS.

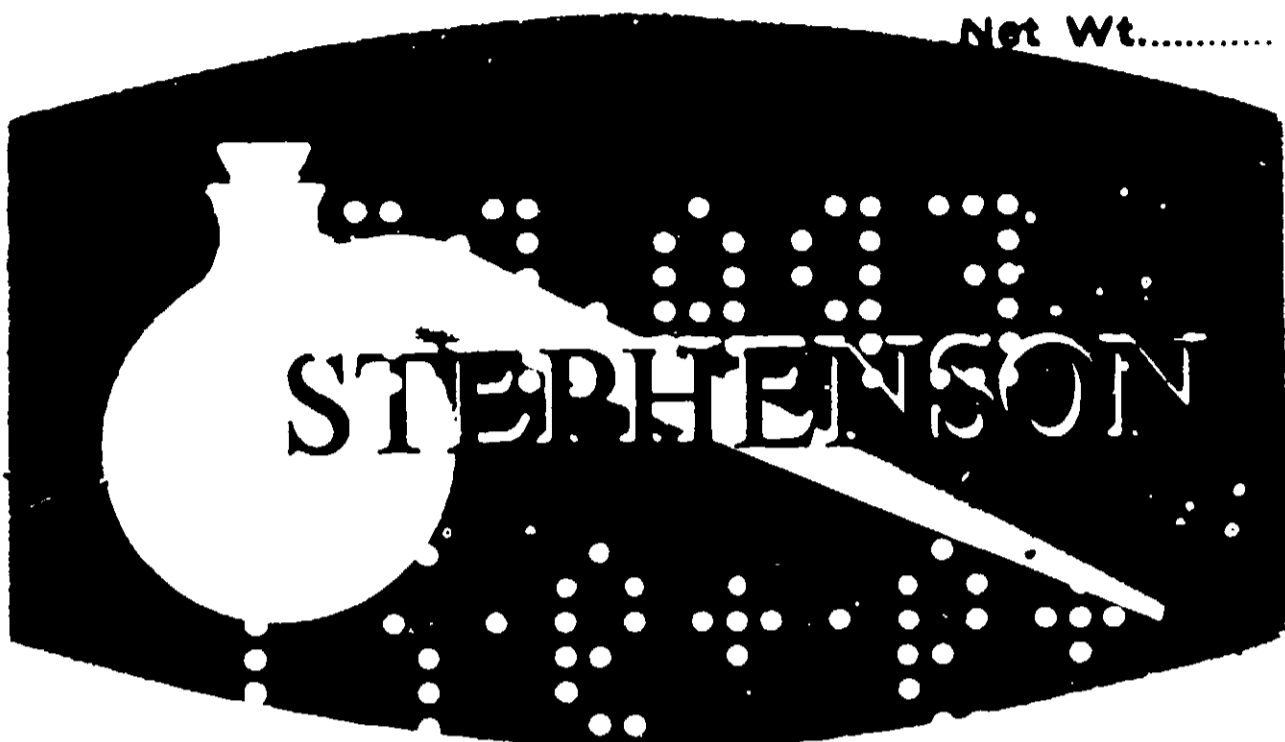
Use 1 or 2 tablespoons of control of mice. Make sure

ACTIVE INGREDIENTS:	
Warfarin (3-(α -acetylbenzyl)-4-hydroxycoumarin)	0.025%
INERT INGREDIENTS:	99.975%
	100.00%

Manufactured by
STEPHENSON CHEMICAL CO., INC.
COLLEGE PARK, GEORGIA

11-2-11
11-2-11
11-2-11
11-2-11
11-2-11

Net Wt.....



WARFARIN RAT BAIT MEAL

GENERAL DIRECTIONS

Place **bait** in locations where rats and mice feed, water or travel. Bait placements along walls, in corners, and in concealed locations where rats and mice can feed unobserved are desirable. Bait should be placed in locations not accessible to children, pets, wildlife, and domestic animals or in tamper-proof boxes. Where a continuous source of infestation is present (nearby dumps), permanent bait stations should be established and replenished as needed. **NOTE**, Baits that are sour, moldy or otherwise decomposed should be replaced promptly.

RAT CONTROL

Place 4 oz. to 1 lb. of STEPHENSON CHEMICALS WARFARIN RAT BAIT where rats are known to run or feed or water. **Baiting must be continuous until complete lack of feeding is noticed, USUALLY 10 TO 14 DAYS. NEVER LET A BAIT STATION REMAIN EMPTY MORE THAN 48 HOURS.**

MOUSE CONTROL

Use 1 or 2 tablespoons of bait at various 8 to 12 ft. intervals for control of mice. Make sure that bait is available for at least 15 days.

ACTIVE INGREDIENTS:

Warfarin (3-(*a*-acetylbenzyl)-
4-hydroxycoumarin)

0.025%

INERT INGREDIENTS:

99.975%

100.00%

Manufactured by

STEPHENSON CHEMICAL CO., INC.

COLLEGE PARK, GEORGIA

Net Wt

A 1 lb. quantity
of this product
is sufficient to
control 4 or 5
rats or several
mice.



STEPHENSON

Chemicals

**WARFARIN RAT BAIT
MEAL**

KILLS RATS and MICE

**CAUTION: KEEP OUT OF REACH OF CHILDREN.
(SEE CAUTION ON SIDE PANEL)**

ACTIVE INGREDIENTS:	
warfarin (3-(a-acetylbenzyl)-	0.025%
4-hydroxycoumarin)	
INERT INGREDIENTS:	99.975%
	100.00%

CAUTION

THE ACTIVE INGREDIENT WARFARIN IS AN ANTI-COAGULANT CHEMICAL WHICH MAY CAUSE SERIOUS HEMORRHAGE IN HUMANS, PETS, WILDLIFE OR LIVESTOCK. IF EATEN, GIVE 2 TABLESPOON OF SALT IN A GLASS OF WARM WATER AND REPEAT UNTIL VOMIT FLUID IS CLEAR. CALL A PHYSICIAN IMMEDIATELY.

NOTE FOR PHYSICIANS

In case of ingestion of WARFARIN, blood transfusions combined with intravenous injections and oral doses of Vitamin K are indicated as in the case of hemorrhage caused by overdose of Dicumarol.

Manufactured by
STEPHENSON CHEMICAL CO., INC.
COLLEGE PARK, GEORGIA

Net wt:

STEPHENSON

WARFARIN RAT BAIT MEAL

KILLS RATS and MICE

CAUTION: KEEP OUT OF REACH OF CHILDREN.
(SEE CAUTION ON SIDE PANEL)

ACTIVE INGREDIENTS:

Warfarin (3-(*a*-acetylbenzyl)-
4-hydroxycoumarin)

0.025%

INERT INGREDIENTS:

99.975%

100.00%

GENERAL DIRECTIONS

Place bait in locations where rats and mice feed, such as cracks, holes, plate joints, along walls, in corners, and in other places where rats and mice can feed unobserved and unnoticed. Bait should be placed in locations not accessible to children, pets, wildlife, and domestic animals or in tamper-proof boxes. Where a continuous source of infestation is present (nearby dumps, permanent bait stations) should be established and replenished as needed. NOTE: Bait that are sour, moldy, or otherwise decomposed should be replaced promptly.

RAT CONTROL

Use 1 or 2 tablespoons of STEPHENSON CHEMICAL'S WARFARIN RAT BAIT where rats are known to feed or feed at night. Baiting must be continuous until complete lack of feeding is noticed. USUALLY 10 TO 15 DAYS. NEVER LET A BAIT STATION REMAIN EMPTY MORE THAN 48 HOURS.

MOUSE CONTROL

Use 1 or 2 tablespoons of bait at various spots 12 ft. intervals for control of mice. Make sure that bait is available for at least 15 days.

NOTICE: Seller makes no warranty, expressed or implied, concerning the use of this product other than indicated on the label. Buyer assumes all risk of use and/or handling of this material when such use and/or handling is contrary to label instructions.

Container Disposal: Do not reuse empty container. Destroy it by perforating or crushing. Bury or discard in a safe place.

USDA Reg. No. 4887-111

Manufactured by
STEPHENSON CHEMICAL CO., INC.
COLLEGE PARK, GEORGIA