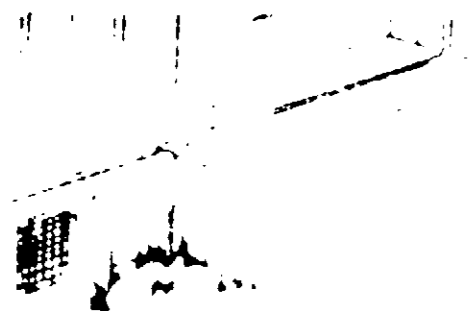


ELIMINATE RODENTS



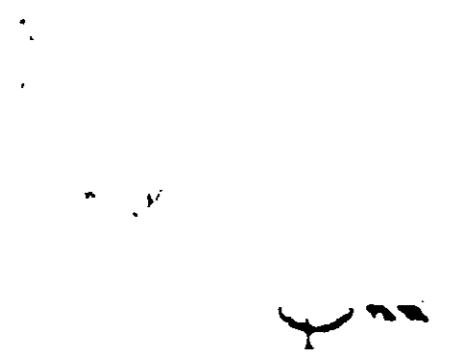
Protect doors and jambs with sheet metal. Be sure windows and doors fit tightly.



Store refuse in water-tight, easy-to-clean metal containers 18" off ground.



Control weeds, particularly around entrances.



Establish permanent bait stations. Inspect and replenish bait as required.

RAT & MOUSE BAIT

WITH FUMARIN[®]



NET WEIGHT

ONE POUND

READY-TO-USE

CAUTION—Keep out of reach of children.

See other side for directions.

Active ingredient

alpha-acetonitrile, 100% active

Other ingredients

20-375

FUMARIN RAT & MOUSE BAIT contains an anti-coagulant chemical. Its remarkable killing power depends on its being consumed regularly in small doses for a period of days—usually 10 to 15. It has unusual properties which make its technique practical.

• NO BAIT STATION IS NEARLY AS EFFECTIVE AS THIS

• INEXPENSIVE AND EASY TO USE

• NO TOLERANCE BUILT UP

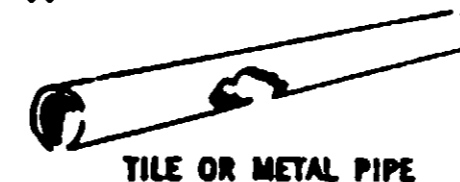
• NO CLEAN-UP REQUIRED

CAUTION

Fumarin Rat & Mouse Bait contains an anti-coagulant chemical. Keep away from humans, domestic animals, or pets, this material may reduce the clotting ability of the blood and cause bleeding. In such case, intravenous and oral administration of Vitamin K combined with blood transfusions may be indicated, as in the case of hemorrhage caused by overdoses of bis-hydroxycoumarin. Do not reuse container. Destroy when empty.



Typical stations



TILE OR METAL PIPE



WARRANTY

Manufacturer warrants that composition of this product conforms to the chemical description given in the ingredient statement and the product is suited for the purposes described when used according to direction. Because of the broad range of conditions which may be encountered with the use of this product it is impossible to eliminate all risks even though label directions are followed. Manufacturer, therefore, makes no other express or implied warranty and no agent of Manufacturer, is authorized to do so. Buyer agrees in purchasing this product to assume the risks and in the event of damages arising from a breach of the warranty to accept refund of the purchase price of the product as full discharge of Manufacturer's obligation.

DIRECTIONS

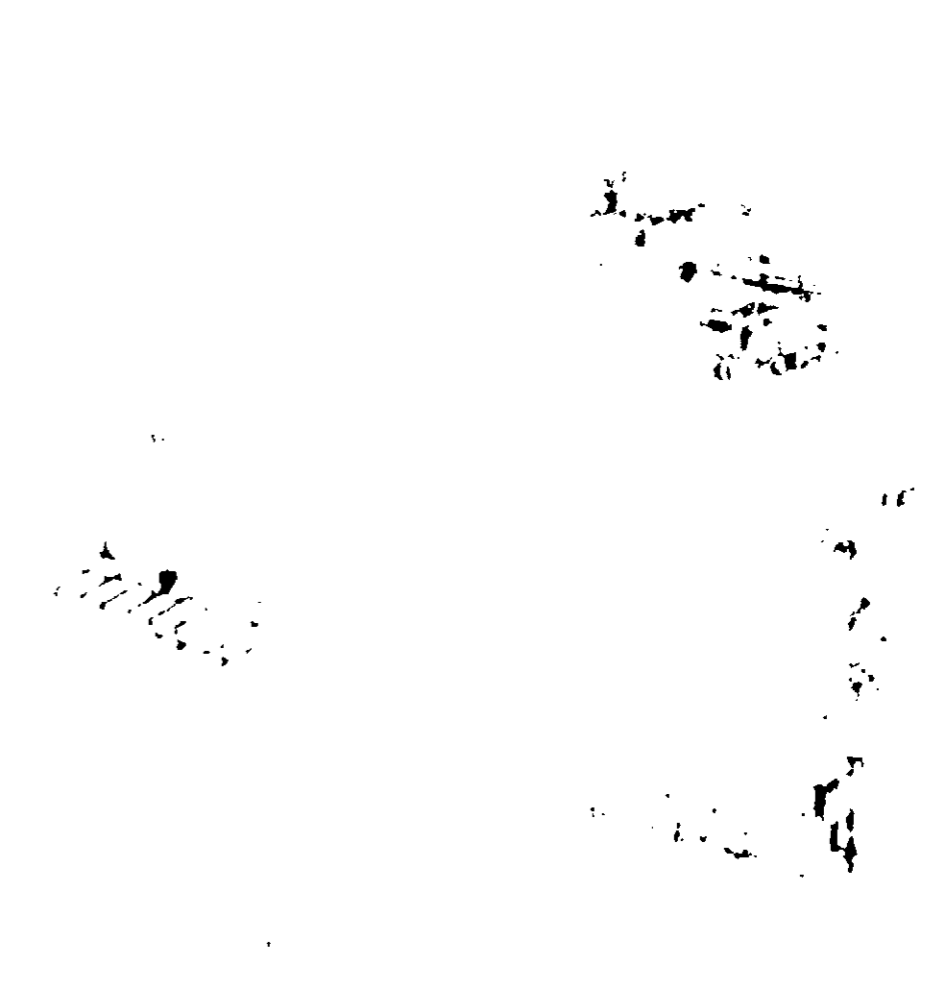
Place Fumarin Rat & Mouse Bait in dry locations where rats and mice ordinarily feed, water, travel or live. Bait should be placed in corners, along walls, etc. and protected with tamper-proof bait boxes or other suitable covering that children, pets or domestic animals won't disturb them.

FOR RATS, use one or two (4 oz.) bait placements at points of greatest activity. Look for such telltale signs as gnaw tracks or trails, burrows, droppings or damage.

FOR MICE, locate tablespoon quantities of bait at intervals where mice are active.

Inspect feeding stations daily and add bait as needed. Never allow a station to remain empty over 48 hours. Continue baiting for 10 to at least 15 days or until lack of baiting is noticed. If some bait stations are untouched, move to different location. If bait becomes used, stale, or otherwise decomposed, it should be replaced.

Typical placement



Manufactured by American Cyanamid Co.

20-375-100-1

ACCEPTED
 MAR 18 1971
 THE FEDERAL INSECTICIDE
 AND RODENTICIDE ACT
 CHANGING POISON REGISTER
 EX NO. 4805-4 SUBJECT
 UNCHANGED COMMENTS

INSCO RAT & MOUSE BAIT

WITH FUMARIN®

USDA REG NO. 4805-4



NET WEIGHT ONE POUND

READY-TO-USE

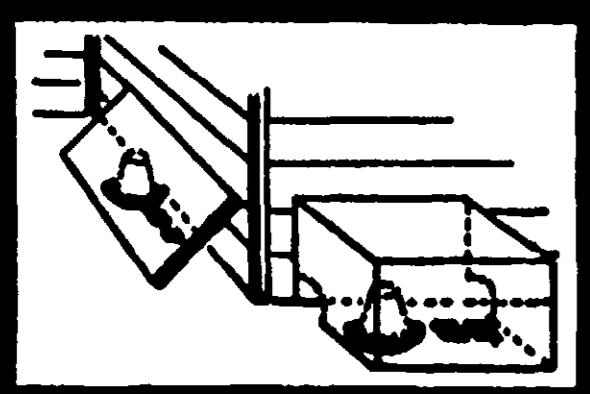
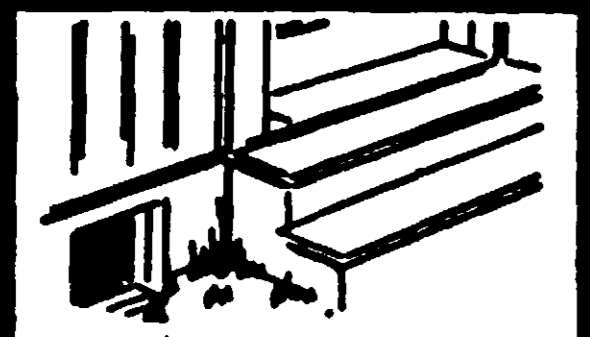
CAUTION— Keep out of reach of children.
See other cautions on side panel of bag.

Active ingredient:
 3-(alpha-cyanoethylthio)-4-hydroxycoumarin 0.825%
 Inert ingredients: 99.175%

FUMARIN RAT & MOUSE BAIT contains an anti-coagulant chemical. Its remarkable killing power depends on its being consumed regularly in small doses for a period of days—usually 10 to 15. It has unusual properties which make this technique practical:

- NO BAIT SHYNESS ● NO PRE-BAITING
- INEXPENSIVE AND EASY TO USE
- NO TOLERANCE BUILD-UP
- SLOW BUT SURE

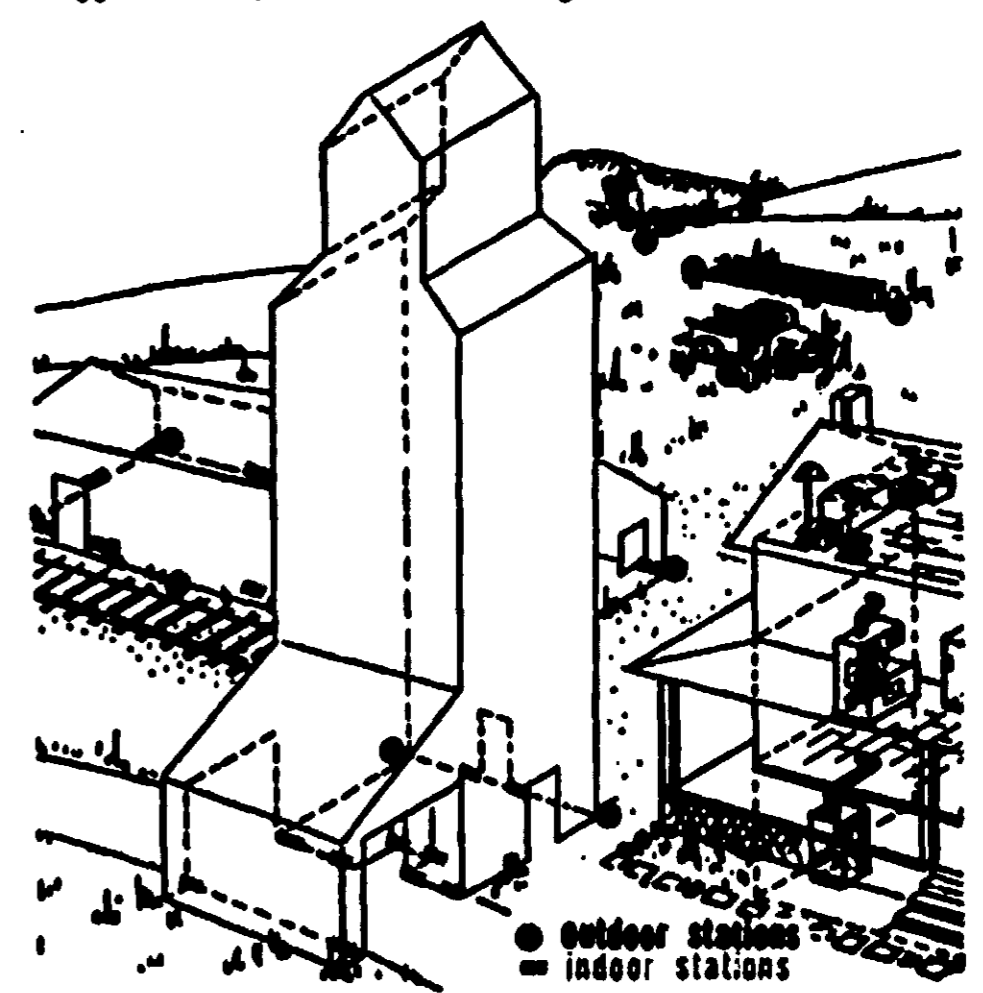
Insect Control Sales & Service



DIRECTIONS

Place Fumarin Rat & Mouse Bait in dry locations where the rats and mice ordinarily feed, water, travel or live. Baits should be placed in corners, along walls, etc. and protected with tamper-proof bait boxes or other suitable cover so that children, pets or domestic animals won't disturb them. **FOR RATS**, use one or two (4 oz.) bait placements at points of greatest activity. Look for such telltale signs as gnawing, tracks or trails, burrows, droppings or damage. **FOR MICE**, locate tablespoon quantities of bait at 6-10 ft. intervals where mice are active. Inspect feeding stations daily and add bait as needed; never allow a station to remain empty over 48 hours. Continue baiting for 10 to at least 15 days or until lack of feeding is noticed. If some bait stations are untouched, move to different location. If bait becomes sour or moldy or otherwise decomposed, it should be replaced promptly.

Typical placements of rat bait



Fumarin® is Amchem Products, Inc., trade-marked name for 3-(alpha-cyanoethylthio)-4-hydroxycoumarin.
Form No. 2720A-2-70