



U.S. ENVIRONMENTAL PROTECTION AGENCY

Office of Pesticide Programs
Registration Division (7505P)
1200 Pennsylvania Ave., N.W.
Washington, D.C. 20460

EPA Reg. Number:

1021-2792

Date of Issuance:

10/22/15

NOTICE OF PESTICIDE:

Registration
 Reregistration
(under FIFRA, as amended)

Term of Issuance:

Conditional

Name of Pesticide Product:

MGK Formula 30912

Name and Address of Registrant (include ZIP Code):

McLaughlin Gormley King Company
8810 Tenth Avenue North
Minneapolis, MN 55427

Note: Changes in labeling differing in substance from that accepted in connection with this registration must be submitted to and accepted by the Registration Division prior to use of the label in commerce. In any correspondence on this product always refer to the above EPA registration number.

On the basis of information furnished by the registrant, the above named pesticide is hereby registered under the Federal Insecticide, Fungicide and Rodenticide Act.

Registration is in no way to be construed as an endorsement or recommendation of this product by the Agency. In order to protect health and the environment, the Administrator, on his motion, may at any time suspend or cancel the registration of a pesticide in accordance with the Act. The acceptance of any name in connection with the registration of a product under this Act is not to be construed as giving the registrant a right to exclusive use of the name or to its use if it has been covered by others.

This product is conditionally registered in accordance with FIFRA section 3(c)(7)(A). You must comply with the following conditions:

1. Submit and/or cite all data required for registration/reregistration/registration review of your product under FIFRA when the Agency requires all registrants of similar products to submit such data.

Signature of Approving Official:

Jennifer Urbanski, Ph.D. Product Manager 04
Invertebrate & Vertebrate Branch 1, Registration Division

Date:

10/22/15

2. You are required to comply with the data requirements described in the DCI order identified below:
 - a. Pyriproxyfen GDCI-129032-1299
 - b. Esfenvalerate GDCI-109303-1111

You must comply with all of the data requirements within the established deadlines. If you have questions about the Generic DCI listed above, you may contact the Chemical Review Manager in the Pesticide Reevaluation Division: http://www.epa.gov/oppsrrd1/contacts_prd.htm

3. The data requirements for storage stability and corrosion characteristics (Guidelines 830.6317 and 830.6320) are not satisfied. A one year study is required to satisfy these data requirements. You have 18 months from the date of registration to provide these data.
4. Make the following label changes before you release the product for shipment:
 - Revise the EPA Registration Number to read, “EPA Reg. No. 1021-2792.”
5. Submit one copy of the final printed label for the record before you release the product for shipment.

Should you wish to add/retain a reference to the company’s website on your label, then please be aware that the website becomes labeling under the Federal Insecticide Fungicide and Rodenticide Act and is subject to review by the Agency. If the website is false or misleading, the product would be misbranded and unlawful to sell or distribute under FIFRA section 12(a)(1)(E). 40 CFR 156.10(a)(5) list examples of statements EPA may consider false or misleading. In addition, regardless of whether a website is referenced on your product’s label, claims made on the website may not substantially differ from those claims approved through the registration process. Therefore, should the Agency find or if it is brought to our attention that a website contains false or misleading statements or claims substantially differing from the EPA approved registration, the website will be referred to the EPA’s Office of Enforcement and Compliance.

If you fail to satisfy these data requirements, EPA will consider appropriate regulatory action including, among other things, cancellation under FIFRA section 6(e). Your release for shipment of the product constitutes acceptance of these conditions. A stamped copy of the label is enclosed for your records. Please also note that the record for this product currently contains the following CSFs:

- Basic CSF dated 02/09/2015

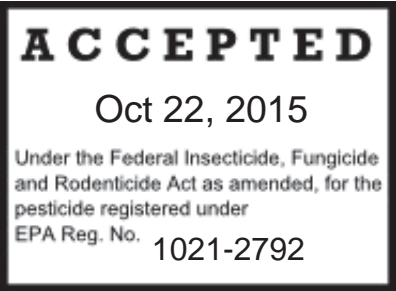
If you have any questions, please contact Jennifer Gaines at 703-305-5967 or via email at gaines.jennifer@epa.gov.

Enclosure

MGK[®] Formula 30912

ACTIVE INGREDIENT:

Esfenvalerate.....	0.0089%
Nylar	0.0087%
OTHER INGREDIENTS	99.9824%
	100.00%



MGK[®] - Registered trademark of McLaughlin Gormley King Company

**KEEP OUT OF REACH OF CHILDREN
CAUTION**

FIRST AID	
IF IN EYES:	<ul style="list-style-type: none"> ▪ Hold eye open and rinse slowly and gently with water for 15-20 minutes. ▪ Remove contact lenses, if present, after the first 5 minutes, then continue rinsing eye. ▪ Call a poison control center or doctor for treatment advice.
Have the product container or label with you when calling a poison control center or doctor, or going for treatment. For information regarding medical emergencies or pesticide incidents, call 1-888-740-8712.	

Manufactured by:

 8810 Tenth Avenue North
 Minneapolis, MN 55427

EPA Reg. No. 1021-ETOE

EPA Est. No. 1021-MN-2

Net Contents

PRECAUTIONARY STATEMENTS
 HAZARDS TO HUMANS AND DOMESTIC ANIMALS

CAUTION

Causes moderate eye irritation. Avoid contact with skin, eyes or clothing. Prolonged or frequently repeated skin contact may cause allergic reactions in some individuals. Wear long sleeved shirt, long pants, shoes and socks. Wash thoroughly with soap and water after handling and before eating, drinking, chewing gum, using tobacco or using the toilet.

ENVIRONMENTAL HAZARDS

This pesticide is extremely toxic to fish. To protect the environment, do not allow pesticide to enter or run off into storm drains, drainage ditches, gutters or surface waters. Applying this product in calm weather when rain is not predicted for the next 24 hours will help to ensure that wind or rain does not blow or wash pesticide off the treatment area. Rinsing application equipment over the treated area will help avoid run off to water bodies or drainage systems.

This product is highly toxic to bees and other pollinating insects exposed to direct treatment or residues on blooming crops or weeds. Do not apply this product or allow it to drift to blooming crops or weeds if bees or other pollinating insects are foraging in the treatment area.

PHYSICAL OR CHEMICAL HAZARDS

Do not use or store near heat or open flame.

Insects Controlled	Ants(excluding fire, carpenter, pharaoh, and harvester ants) , Alfalfa loopers, Aphids, Armyworms, Asian Lady Beetles, Bagworms, Beetles, Borers, Boxelder Bugs, Budworms, Cabbageworms,, Chinch Bugs, Cicadas, Citrus black flies, Cluster flies, Codling moths, Corn earworms, Crazy Ants, Crickets, Cutworms, Earwigs, Elm spanworms, Fall cankerworms, Fleas, Flies, Grasshoppers, Green fruitworms, Grubss, Inchworms, Japanese Beetles, Lady Bugs, Leafminers, Leafhoppers, Leafrollers, Lygus bugs, Mealybugs, Midges, Millipedes, Mites, Mole crickets, , Moths, Pillbugs, Scales, Silverfish, Sod Webworms, Sowbugs (pillbugs), Spider mites, Spring cankerworms, Stink Bugs, Tent Caterpillars, Thrips, , Spiders (excluding Black Widows and brown recluse), Weevils, Whiteflies,
Wood-Infesting Insects	Beetles (Powderpost Beetles, Ambrosid Beetles, Death Hunter beetles, False Powderpost beetles, powderpost beetles
Where to Use	Use Outdoors or Indoors based on label instruction. Indoor Use as a spot or crack & crevice spray or surface spray. Outdoor use limited to spot or crack & crevice treatments except for treatment to soil, lawns, turf, vegetation, and building foundations up to max height of 3 feet.

DIRECTIONS FOR USE		
It is a violation of Federal Law to use this product in a manner inconsistent with its labeling.		
READ ENTIRE LABEL BEFORE USE		
USE RESTRICTIONS	Do not spray into fish pools, ponds, streams or lakes	
	Do not use this product on pets.	
	Care should be taken to avoid introducing the material into the air.	
	Do not allow People and pets in treated areas until spray has dried.	
	Do not contact treated surfaces until the surface is completely dry.	
	Do not water the treated area to the point of runoff.	
	Do not spray into electrical outlets or utilities	
	Remove pets and cover fish aquariums and pet food and water dishes before spraying.	
	Do not make applications during rain.	
	All outdoor applications must be limited to spot or crack-and-crevice treatments only, except for the following permitted uses:	
	(1) Treatment to soil or vegetation around structures;	
	(2) Applications to lawns, turf, and other vegetation;	
	(3) Applications to building foundations, up to a maximum height of 3 feet.	
	Other than applications to building foundations, all outdoor applications to impervious surfaces such as sidewalks, driveways, patios, porches and structural surfaces (such as windows, doors, and eaves) are limited to spot and crack-and-crevice applications only. .	
Do not contaminate food and feedstuffs. Do not contaminate food or food handling surfaces.		
DO NOT allow spray to contact food or food-containing surfaces, feed, or water supplies.		
Thoroughly wash dishes and food handling utensils with soap and water if they become contaminated with this product.		
Before You Use	Applications made to vinyl and aluminum siding may result in staining or discoloration. Factors such as high heat or direct sunlight may promote staining when using this product. Before applying this product to vinyl or aluminum siding, treat a small inconspicuous area and evaluate 30 minutes later for any potential staining. Do not apply to vinyl or aluminum siding when exposed to direct sunlight or during the heat of the day.	
How to Apply	SEE APPLICATOR OPTIONS 1 THRU 7 BELOW	
When to Apply	Apply as needed up to once every 7 days.	
How To Use Indoors	Ants (Excluding fire, pharaoh, carpenter and harvester ants)	Spray where ants are usually found. Also apply around door and window frames, entry points and any visible ant trails.
	Listed Crawling Insects	Apply as a spot and crack and crevice treatment to areas where these pests crawl and hide, especially in hidden areas under sinks and storage areas, behind baseboards, behind and underneath stoves and refrigerators, around doors and windows, and similar areas. Thoroughly vacuum area to be treated. Adjust spray to create a fan spray. Treat carpeted areas and baseboards of hard-surfaced floors. Evenly spray carpets, rugs, and drapes by using a wide, sweeping motion. Also spray floors underneath furniture, sofas, chairs and beds. Do not saturate surfaces. Apply as a spot treatment around pet bedding areas or areas where pets frequent. DO NOT SPRAY PETS WITH THIS PRODUCT. Spray surface until damp. DO NOT contact with treated surface until the surface is completely dry.
	Ants (Excluding fire, pharaoh, carpenter and harvester ants)	Spray around ant trails and hills. Spray around nests hidden under steps, brickwork, concrete, etc. Break apart accessible nests and spray on and around debris until surface is slightly wet. Treatment of infested fences and tree holes is permitted.
How To Use Outdoors	Asian Lady Beetles, Boxelder Bugs, Stink Bugs, Cluster flies	Treat in late summer or fall just before these pests begin looking for over-winter shelter. Spray siding, eaves, around windows, doors and window screens. To help reduce infestations treat cracks and crevices, attics and other indoor winter hiding places.
	Builder Perimeter Treatment	Spray a 1 to 1.5 foot band on the soil around the house next to the foundation. Spray a 2 to 3 foot band from the ground up the side of the house [using the illustration as an example]. Spot treat other entry points around water pipes, utility penetrations, windows, doors, vents, eaves, soffit areas and other exterior openings (including foundation cracks or drilled holes) where pests enter the structure or where they have been seen or found or can find shelter.
	Flea Prevention	[This Product] can be used outdoors as a preventive treatment prior to the flea season. First, remove animals or pets before spraying. Apply this product in areas where pets or other animals are known to frequent and where previous infestations have been known to occur. Application [of this product] will reduce the emergence of adult fleas and also control immature stages of fleas. Apply at the rate of 8 fl. oz. of product per 1,000 sq. ft.
	Flies, Spiders (Excluding black widow and brown recluse)	Apply as a spot or crack-and-crevice spray to outside surfaces of window and door frames as well as other areas where these pests may enter the home. Also spray dark corners and localized resting areas (such as under eaves) of porches, patios, fences, and garages where these insects may congregate. Flies coming to rest on treated surfaces will be killed.
	Listed Wood-Infesting Beetles.	Treat outside surfaces of building, porches, wooden decks and patios, wooden fences, window frames, doorways, foundations, eaves, patios, garages, garage areas and other areas where you may find these pests. Also treat cracks and crevices or openings into wall voids or other areas where these insects may be present. Spray infested surfaces until thoroughly wet, avoiding dripping and runoff. Apply evenly on wood surfaces. Do not spray into electrical outlets or utilities
	Garden Plants including Flowers, Shrubs and Vegetables	Spray plant to wet the upper and lower leaf surfaces until dripping.
	Lawn Treatment	For best results, mow a day or two before spraying. Measure lawn. Calculate square feet by multiplying length times width. Spray evenly over measured area. Treat entire lawn. Also spray under trees and shrubs.

Option 1 – for Non specific spray container

[HOW TO APPLY/USE: 

- Hold with applicator aimed away from you.
- Spray surfaces from a distance of 8 to 10 inches until slightly damp.]

STORAGE AND DISPOSAL

Do not contaminate water, food, or feed by storage or disposal.

PESTICIDE STORAGE: Protect from freezing. Always store this pesticide product in the original container. Store in a cool, dry (preferably locked) place that is inaccessible to children and animals, and in a safe area away from food and pet food.

PESTICIDE DISPOSAL AND CONTAINER HANDLING: Non-refillable container. Do not reuse or refill this container.

If empty: Place in trash or offer for recycling if available.

If partly filled: Call your local solid waste agency for disposal instructions. Never place unused product down any indoor or outdoor drain.

End of Option 1

Option 2 – for Trigger Sprayer [Applicator Name]

[[Applicator Name] [Applicator/Sprayer] Directions]

[HOW TO APPLY/USE: [icon]

- Turn sprayer nozzle to open.
- Adjust sprayer nozzle as desired. [Set sprayer to a coarse spray.]
- Hold 8 to 10 inches from the surface to be sprayed.
- Spray surface until slightly damp.]

STORAGE AND DISPOSAL

Do not contaminate water, food, or feed by storage or disposal.

PESTICIDE STORAGE: [Small] [Applicator Name] Rotate nozzle to closed position, -OR- Turn sprayer nozzle to "OFF [X]. Protect from freezing. Always store this pesticide product in the original container. Store in a cool, dry (preferably locked) place that is inaccessible to children and animals, and in a safe area away from food and pet food.

PESTICIDE DISPOSAL AND CONTAINER HANDLING: Non-refillable container. Do not reuse or refill this container.

If empty: Place in trash or offer for recycling if available.

If partly filled: Call your local solid waste agency for disposal instructions. Never place unused product down any indoor or outdoor drain.

PESTICIDE STORAGE: [Large] [Applicator Name] Place trigger sprayer under handle on container to keep sprayer above the level of contents. Protect from freezing. Always store this pesticide product in the original container. Store in a cool, dry (preferably locked) place that is inaccessible to children and animals, and in a safe area away from food and pet food.

PESTICIDE DISPOSAL AND CONTAINER HANDLING: Non-refillable container. Do not reuse or refill this container.

If empty: Place in trash or offer for recycling if available.

If partly filled: Call your local solid waste agency for disposal instructions. Never place unused product down any indoor or outdoor drain.

End of Option 2

Option 3 [Quick Connect Trigger] [Applicator Name]

[[Applicator Name] [Applicator/Sprayer] Directions]

[Quick Connect Sprayer] [1. Pull sprayer from bottle. 2. Pull [color] hose connector and coil from sprayer handle. 3. Insert hose connector into [color] spout on cap [until it clicks] into place.] [4.] [Flip up spout.] Turn sprayer nozzle to open, and [pull trigger to] spray.

or

[Quick Connect Sprayer] [1. Remove sprayer. Pull cord ALL THE WAY OUT. 2. Insert [color] plug into spout [on cap] [until it clicks].] [3.] [Flip up spout.] Open nozzle at end of sprayer [and pull trigger to spray].

Note to PM: Illustrations may be associated with each step.

[HOW TO APPLY/USE: [icon]

- Turn sprayer nozzle to open.
- Adjust sprayer nozzle as desired. [Set sprayer to a coarse spray.]
- Hold 8 to 10 inches from the surface to be sprayed.
- Spray surface until slightly damp.]

STORAGE AND DISPOSAL

Do not contaminate water, food, or feed by storage or disposal.

PESTICIDE STORAGE: [Applicator Name] Flip down spout to close. No need to disconnect trigger sprayer. Close nozzle on trigger sprayer. [Turn sprayer nozzle to "OFF"[X]. Snap sprayer back in place. Protect from freezing. Always store this pesticide product in the original container. Store in a cool, dry (preferably locked) place that is inaccessible to children and animals, and in a safe area away from food and pet food.

PESTICIDE DISPOSAL AND CONTAINER HANDLING: Non-refillable container. Do not reuse or refill this container.

If empty: Place in trash or offer for recycling if available.

If partly filled: Call your local solid waste agency for disposal instructions. Never place unused product down any indoor or outdoor drain.

End of Option 3

Option 4 – Pull 'N Spray II

[[Applicator Name] [Applicator/Sprayer] Directions]

[Illustration #1]

- [Remove sprayer from side carrier and unwrap hose completely.]
- [Insert [color of plug] plug at end of hose into [color of spout] spout on cap [until it clicks.]
- [Flip up spout]. Spout must remain up while spraying.]]
- [Illustration #2]
- Twist nozzle at end of sprayer to desired spray pattern.
- [Illustration #3]
- Point sprayer away from body
- Grasp sprayer by the handle.
- Hold 8 to 10 inches from the surface to be sprayed.
- Slowly pull ring at bottom of sprayer handle until it stops and hold for two (2) seconds to ready the sprayer.

[Illustration #4]

- Press and hold button on sprayer to begin spraying.
- Pull ring at sprayer bottom again as needed to continue spraying.

[HOW TO APPLY/USE: *[icon]*

- Follow illustrations and instructions above.
- Twist nozzle at end of sprayer to desired spray pattern.
- Point sprayer away from body and press sprayer button to begin spraying.
- Pull ring at sprayer bottom again as needed to continue spraying.
- Hold 8 to 10 inches from the surface to be sprayed.
- Spray surface until slightly damp.]


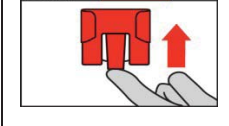
Optional Refill [and Reuse] Directions

[The Pull 'N Spray II/Applicator Name [applicator/wand] may be reused with the available MGK® 29515/Product Name refill bottle/container. Read and follow instructions in Reuse Directions to reuse the applicator.] --OR--

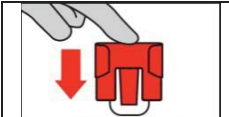
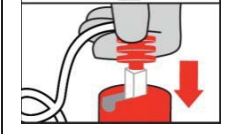
[REFILL: This container may be refilled with MGK® 29515 / product name. To refill pour MGK® 29515 / product name into container.]

Refill [and Reuse] Directions

How to attach the [Pull 'N Spray II/Applicator Name] [applicator/wand] to MGK® 29515 / product name [refill bottle]: Removing [Pull 'N Spray II/Applicator Name] [applicator] from original bottle:

	Remove the [applicator name] [applicator] by pulling the [color of plug] [red] plug from the [color of spout] [red] spout on cap. [Illustration]
	[At the bottom of the side [clip] [carrier] [holder] press the middle tab up and slide the [clip] [carrier] [holder] upwards to remove it from the bottle.] [Illustration]

Adding [Pull 'N Spray II/Applicator Name] [applicator] to MGK® 29515 /Product Name:

	[Slide the side [clip] [carrier] [holder] downward on the knob located [at right-hand] [on the] side of the refill container.] [Illustration]
	Insert [color of plug] [red] plug at end of hose into [color of spout] [red] spout on cap [until it clicks]. [Illustration]

STORAGE AND DISPOSAL

Do not contaminate water, food, or feed by storage or disposal.

PESTICIDE STORAGE: [Pull 'N Spray II/Applicator Name] [Applicator]: Completely discharge/dispense product in sprayer by application according to label directions prior to storage. Flip down [color of spout] spout on cap. **DO NOT DISCONNECT SPRAYER HOSE FROM CAP.** Place sprayer back inside carrier on bottle with the nozzle facing down. Protect from freezing. Always store this pesticide product in the original container. Store in a cool, dry (preferably locked) place that is inaccessible to children and animals, and in a safe area away from food and pet food.

PESTICIDE DISPOSAL AND CONTAINER HANDLING: Pull 'N Spray II/Applicator Name can be reused with MGK® 29515/Product Name refill bottle/container. Follow instructions in the Reuse Directions when reusing [applicator name]. Non-refillable container. Do not reuse or refill this container.

If empty: Place in trash or offer for recycling if available.

If partly filled: Call your local solid waste agency for disposal instructions. Never place unused product down any indoor or outdoor drain.

STORAGE AND DISPOSAL

Do not contaminate water, food, or feed by storage and disposal.

PESTICIDE STORAGE: [Pull 'N Spray II/Applicator Name] [Applicator]: Completely discharge/dispense product in sprayer by application according to label instructions prior to storage. Flip down [color of spout] spout on cap. **DO NOT DISCONNECT SPRAYER HOSE FROM CAP.** Place sprayer back inside carrier on bottle with the nozzle facing down. Protect from freezing. Always store this pesticide product in the original container. Store in a cool, dry (preferably locked) place that is inaccessible to children and animals, and in a safe area away from food and pet food.

PESTICIDE DISPOSAL AND CONTAINER HANDLING: Pull 'N Spray II/Applicator Name can be reused with MGK® 29515/Product Name refill bottle/container. Follow instructions in the Reuse Directions when reusing [applicator name]. Non-refillable container. Do not reuse or refill this container.

If empty: Place in trash or offer for recycling if available.

If partly filled: Call your local solid waste agency for disposal instructions. Never place unused product down any indoor or outdoor drain.

End of Option 4

Option 5 – Comfort Wand [Applicator Name]

[[Applicator Name] [Applicator/Wand] Directions]

[[1. Remove] Remove [applicator name] Wand from side [holder/clip] [Illustration #1&2]

- [Unwrap hose completely]
- [Remove protective strip from battery compartment to activate batteries]

[[2. Connect] Insert [color of plug] plug at end of hose into [color of spout] spout on cap [until it clicks. Flip up spout.] [Spout must remain up while spraying] [Illustration #3]]

[[3. Extend] Flip open [applicator name] wand until it locks into position [Illustration #4]

[[4. Spray] Twist nozzle at end of [applicator name] wand to desired spray pattern. [Ensure trigger lock is disengaged before spraying.] Hold [color of trigger] trigger for continuous spray. [Illustration #5]

[HOW TO APPLY/USE: [icon]

- Follow illustrations and instructions above.
- Twist nozzle at end of [applicator name] wand to desired spray pattern.
- Hold 8 to 10 inches from the surface to be sprayed.
- Point [applicator name] wand away from body and hold [color of trigger] trigger for continuous spray.
- Spray surface until slightly damp.
- Release trigger to stop spray.

[After Use: Twist nozzle to OFF position. [Engage trigger lock.] Flip the [applicator name] wand closed and store on the side [holder/clip].]

Important Use Information: Do not submerge in water. When storing sprayer for long periods, remove batteries.

To replace batteries: Open battery compartment at bottom of [applicator name] wand. Remove used batteries and replace with four new AA batteries in correct position as marked per diagram inside battery compartment. Securely close battery compartment door. Always use a complete set of the same type when replacing batteries. Never mix alkaline, carbon-zinc or rechargeable batteries.

Optional Refill [and Reuse] Directions

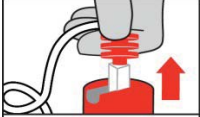
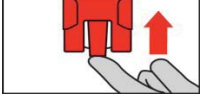
[The Comfort Wand/Applicator Name [applicator/wand] may be reused with MGK® 29515/Product Name refill bottle/container. Read and follow instructions in Reuse Directions to reuse the applicator.] --OR--

[REFILL: This container may be refilled with MGK® 29515 / product name. To refill pour MGK® 29515 / product name into container.]

Refill [and Reuse] Directions

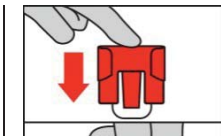
How to attach the [Comfort Wand/Applicator Name] [applicator/wand] to MGK® 29515 /Product name [refill bottle]:

Removing [Comfort Wand/Applicator Name] [applicator] from original bottle:

	<p>Remove the [applicator name] [applicator] by pulling the [color of plug] [red] plug from the [color of spout] [red] spout on cap. [Illustration]</p>
	<p>[At the bottom of the side [clip] [carrier] [holder] press the middle tab up and slide the [clip] [carrier] [holder] upwards to remove it from the bottle.] [Illustration]</p>

Adding [Comfort Wand/Applicator Name] [applicator] to MGK® 29515 /Product Name:

	<p>[Slide the side [clip] [carrier] [holder] downward on the knob located [at right-hand] [on the] side of the refill container.] [Illustration]</p>
--	--



Insert [color of plug] [red] plug at end of hose into [color of spout] [red] spout on cap [until it clicks]. [Illustration]

Important Use Information: Do not submerge in water. When storing sprayer for long periods, remove batteries.

To replace batteries: Open battery compartment at bottom of [applicator name] wand. Remove used batteries and replace with four new AA batteries in correct position as marked per diagram inside battery compartment. Securely close battery compartment door. Always use a complete set of the same type when replacing batteries. Never mix alkaline, carbon-zinc or rechargeable batteries.

Optional Refill [and Reuse] Directions

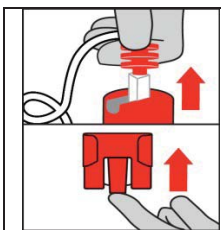
[The Comfort Wand/Applicator Name [applicator/wand] may be reused with MGK® 29515/Product Name refill bottle/container. Read and follow instructions in Reuse Directions to reuse the applicator.] --OR--

[REFILL: This container may be refilled with MGK® 29515 / product name. To refill pour MGK® 29515 / product name into container.]

Refill [and Reuse] Directions

How to attach the [Comfort Wand/Applicator Name] [applicator/wand] to MGK® 29515 /Product name [refill bottle]:

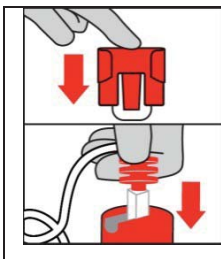
Removing [Comfort Wand/Applicator Name] [applicator] from original bottle:



Remove the [applicator name] [applicator] by pulling the [color of plug] [red] plug from the [color of spout] [red] spout on cap. [Illustration]

[At the bottom of the side [clip] [carrier] [holder] press the middle tab up and slide the [clip] [carrier] [holder] upwards to remove it from the bottle.] [Illustration]

Adding [Comfort Wand/Applicator Name] [applicator] to MGK® 29515 /Product Name:



[Slide the side [clip] [carrier] [holder] downward on the knob located [at right-hand] [on the] side of the refill container.] [Illustration]

Insert [color of plug] [red] plug at end of hose into [color of spout] [red] spout on cap [until it clicks]. [Illustration]

STORAGE AND DISPOSAL

Do not contaminate water, food, or feed by storage or disposal.

PESTICIDE STORAGE: [Applicator Name] [Applicator]: Flip down (color of spout) spout on cap. NO NEED TO DISCONNECT SPRAYER HOSE FROM CAP. Completely discharge/dispense product in sprayer by application according to label directions prior to storage. Twist sprayer nozzle to the OFF position. [Engage trigger lock.]. Flip the [applicator name] wand closed and place [sprayer] back inside carrier [clip] [holder]. Protect from freezing. Always store this pesticide product in the original container. Store in a cool, dry (preferably locked) place that is inaccessible to children and animals, and in a safe area away from food and pet food.

PESTICIDE DISPOSAL AND CONTAINER HANDLING: Comfort Wand /Applicator Name can be reused with MGK® 29515 /Product Name refill bottle/container. Follow instructions in Reuse Directions when reusing [applicator name]. Non-refillable container. Do not reuse or refill this container.

If empty: Place in trash or offer for recycling if available.

If partly filled: Call your local solid waste agency for disposal instruction. Never place unused product down any indoor or outdoor drain.

End of Option 5

Option 6 – EZ Sprayer [Pump ‘n Go] [Applicator Name]

[[Applicator Name] [Applicator] Directions]

CUT [Illustration # 1]

1. Carefully cut the two [enter color] [white] zip ties securing the hose and pump handle with scissors. Use caution not to cut the [enter color] [white] hose.

CONNECT [Illustration #2]

2. Unwind hose

Optional Refill [and Reuse] Directions

[This product is also available for sale in a refill bottle/container. Read and follow instructions in the Refill Directions to refill the original container with the Quick Pump/Applicator Name [applicator]. Do not refill this bottle/container with any other product. Wear protective clothing as directed in Precautionary Statements when refilling this bottle/container.] --OR--

[REFILL: This container may be refilled with MGK®29515 / product name. To refill pour MGK®29515 / product name into container.]

EXTEND WAND [Illustration #3]

3. Lift sprayer wand off bottle. Push [enter color] [yellow] button while pulling out on the wand nozzle tip. Fully extend wand until [enter color] [yellow] button snaps into SPRAY position. NOTE: [White] [color of] trigger will not function until wand is fully extended and [enter color] yellow button is visible in the spray position.

PUMP [Illustration # 4]

4. [Make sure handle is screwed on TIGHTLY or the bottle will not pressurize.] Pump container 10-20 [X-X] times to pressurize bottle. A full bottle requires fewer pumps than an empty bottle. Pumping to the higher range will provide longer spray duration. After pumping, push pump down and turn handle clockwise to lock into carrying position. NOTE: This bottle is designed to expand under pressure and cannot be over- pressurized.

SPRAY [Illustration # 5]

5. Aim wand. Spray by pushing down [enter color] [white] trigger with thumb. Adjust spray pattern by rotating [enter color] [white] nozzle tip up to one-half rotation. Spray until slightly damp.

STORE [Illustration # 6]

6. When finished spraying, push the [enter color] [yellow] button and push the wand until the [enter color] [yellow] button snaps back into the original storage position. Place wand back onto the bottle with nozzle facing down.

DEPRESSURIZE [Illustration # 7]

7. Push pump handle all the way down and turn pump handle and cap counter-clockwise to relieve pressure, then retighten prior to storing.]

Option 7 – Other Pump Style [Quick Pump] [Applicator Name]

[[Applicator Name] [Applicator] Directions]

[1.] TO USE

Remove wand from holster and pull the hose from the storage compartment. Turn the pump handle clockwise to make sure the pump is tight [and push the pop-up pressure indicator completely down] before pumping. [illustration #1]

[2.] TO PUMP

Turn the pump handle clockwise [one-quarter turn] to release the handle. Pump the sprayer [until the pressure indicator pops up about an inch]. [That's your signal you are ready to spray.] Turn the pump handle counterclockwise [one-quarter turn] to secure the handle for carrying. [illustration #2]

[3.] TO SPRAY

Begin spraying by pushing the lever on the spray handle down. Hold 8 to 10 inches from the surface to be sprayed. Rotate the nozzle at the tip of the wand to adjust spray from a stream to gentle mist.

For continuous spraying, push the lever down and slide forward to lock. Pull back to release. Spray surface until slightly damp. [illustration #3]

[4.] TO STORE

Slowly turn the pump handle counterclockwise to untighten and release pressure, then turn back clockwise to retighten the handle. Push the hose back into the storage compartment and put the wand back in holster. [illustration #4]





[HOW TO APPLY/USE: [icon]

- Follow illustrations and instructions above.
- Point [applicator name] away from body Release trigger to stop spray.

- Hold 8 to 10 inches from the surface to be sprayed.
- Spray surface until slightly damp.

Refill [and Reuse] Directions

How to refill MGK® 29515 /Product Name with [Quick Pump/Applicator Name] [applicator]:

	<p>Remove the pump handle on the Quick Pump/Applicator Name by twisting it counterclockwise. [Illustration]</p>
	<p>Remove the cap from the MGK® 29515 / Product Name bottle/container. [Illustration]</p>
	<p>Pour the product carefully and directly into the Quick Pump/Applicator Name container. Do Not fill above 2"/3"/4" from the top of the container. DO NOT add water. [Illustration]</p>
	<p>Secure the pump handle back on the container by twisting it clockwise until tight. [Illustration]</p>

STORAGE AND DISPOSAL

Do not contaminate water, food, or feed by storage or disposal.

PESTICIDE STORAGE: Protect from freezing. Always store this pesticide product in the original container. Store in a cool, dry (preferably locked) place that is inaccessible to children and animals, and in a safe area away from food and pet food.

PESTICIDE DISPOSAL AND CONTAINER HANDLING: Do not reuse or refill this container unless the directions for use allow refill according to the instructions contained in the Refill Directions.

If empty: Place in trash or offer for recycling if available.

If partly filled: Call your local solid waste agency for disposal instructions. Never place unused product down any indoor or outdoor drain.

STORAGE AND DISPOSAL

Do not contaminate water, food, or feed by storage and disposal.

PESTICIDE STORAGE: Protect from freezing. Always store this pesticide product in the original container. Store in a cool, dry (preferably locked) place that is inaccessible to children and animals, and in a safe area away from food and pet food.

PESTICIDE DISPOSAL AND CONTAINER HANDLING: Do not reuse or refill this container unless the directions for use allow refill according to the instructions contained in the Refill Directions.

If empty: Place in trash or offer for recycling if available.

If partly filled: Call your local solid waste agency for disposal instructions. Never place unused product down any indoor or outdoor drain.

End of Options 6 and 7

Optional Trouble Shooting Section for [Battery Powered Wand] [Comfort Wand] [Comfort Shot Wand] [Pump 'N Go] [EZ Sprayer] [Applicator name]

Troubleshooting Tips:

Problem: Sprayer does not spray [function].

Possible Cause: Batteries not installed properly.

Solution: See instructions for correct battery placement.

Problem: Sprayer makes a straining noise [Sprayer runs but nothing [no product] comes out]. Possible Cause: Nozzle is turned Off.

Solution: Turn nozzle to (desired) spray setting [position].

Possible Cause: [Red] [color] plug at end of hose is not flipped up.

Solution: Insert [color of plug] plug at end of hose into [color of spout] spout on cap [until it clicks and flip up spout.] Possible Cause: Sprayer is not primed.

Solution: Press and hold button on sprayer for about [X] (10/ 15/ 20/ 30) seconds to prime the sprayer. Problem: Spray pattern is weak [or uneven] [product flow is uneven or dribbles out of nozzle].

Possible Cause: Weak batteries.

Solution: Install a fresh set of batteries.

Possible Cause: [Red] [color of plug] plug at end of hose is not flipped up.

Solution: Insert [color of plug] plug at end of hose into [color of spout] spout on cap [until it clicks]. [Attach coupler to the cap] and [flip up spout.] Possible Cause: Nozzle not fully open.

Solution: Turn nozzle to [desired] spray setting [position]

End of Optional Trouble Shooting Section

OPTIONAL [REUSE AND] REFILL

DIRECTIONS

[REFILL: This container may be refilled with [product name]. To refill pour [product name] into container. REFILL DIRECTIONS

Removing [Applicator Name] [Comfort Wand] from original bottle:

1. Remove the wand by pulling the red plug from the white spout on cap. [Illustration]

2. At the bottom of the side [clip] [carrier] [holder] press the middle tab up and slide the [clip] [carrier] [holder] upwards to remove it from the bottle. [Illustration]

Adding wand to [MGK® 29515 /Product

Name Refill/Recharge/Renew/Fill-

Up/Reload]/ [Refill bottle]:

3. Slide the side [clip] [carrier] [holder] downward on the knob located [at right-hand] [on the] side of the refill container. [Illustration]
4. Insert red plug at end of hose into white spout on cap until it clicks. [Illustration]]

End of OPTIONAL [REUSE AND] REFILL

DIRECTIONS OPTIONAL WARRANTY

STATEMENTS:

NOTICE: To the extent consistent with applicable law, buyer assumes all responsibility for safety and use not in accordance with directions.

[IMPORTANT: Read the entire Directions for Use, Conditions of Sale and Disclaimer of Warranties and Limitations of Liability before using this product.

CONDITIONS OF SALE: The directions for use of this product have been determined to be appropriate for the correct use of this product. This product has been tested under different environmental conditions similar to those that are ordinary and customary where the product is to be used. Insufficient control of pests or plant injury may result from the occurrence of extraordinary or unusual conditions, or from failure to follow label directions. In addition, failure to follow label directions may cause injury to animals, man and damage to the environment. Manufacturer and Seller offer, and the buyer accepts and uses, this product subject to the conditions that extraordinary or unusual environmental conditions, or failure to follow label directions are beyond the control of Manufacturer and Seller and are, therefore, the responsibility of the buyer.

LIMITED WARRANTY AND LIMITATION OF DAMAGES

Manufacturer and Seller warrant that this material conforms to the chemical description on the label. TO THE EXTENT CONSISTENT WITH APPLICABLE LAW, MANUFACTURER AND SELLER MAKE NO OTHER EXPRESS OR IMPLIED WARRANTY, INCLUDING ANY OTHER EXPRESS

OR IMPLIED WARRANTY OF FITNESS OR MERCHANTABILITY, and no agent of Manufacturer or Seller is authorized to do so except in writing with a specific reference to this warranty. Any damages arising from a breach of this warranty shall be limited to direct damages and shall not include consequential commercial damages such as loss of profits or values, etc.]

OPTIONAL MARKETING CLAIMS:

Note to PM: When qualified claims are used on the market label, the qualifying statement will appear in close proximity to the claim when it does not impact any mandatory language.

Kill Claims

- Kills [listed insects] by Contact
- Kills Bugs/Pests/Insects/[listed insects]
- Kills listed insects
- Kills ants (excluding fire, pharaoh, carpenter and harvester ants) [and many other listed pests [listed insects]!]
- Kills Flies
- [Also] Kills Japanese Beetles, Asian Lady Beetles, Box Elder Beetles (Bugs), Stink Bugs, and many listed other insects
- Kills 60+ listed Insects
- Kills listed Wood Infesting Insects
- Kills, Powderpost Beetles and Other Listed Insects
- Kills listed Insects: flies, ants(excluding fire, pharaoh, carpenter and harvester ants), crickets, sowbugs (pillbugs) and spiders(excluding black widow and brown recluse spiders)
- Kills listed Wood Destroying Pests:, Old House Borers, Powder Post Beetles, Furniture Beetles, Round-Headed House Borers, and Deathwatch Beetles
- Kills adult and immature stages of Cluster Flies, Flying Moths
- Kills Ants (including Swarming Crazy Ants) (excluding fire pharaoh, carpenter and harvester ants), Crickets, Earwigs, Fleas*,
- Stops/Breaks the Flea Life Cycle*
- Effectively breaks the flea* life cycle preventing future development of adult Fleas*
- [Helps/May/Can] Prevent[s] outdoor flea reinfestation*
- Kills Fleas* and carpet beetles
- Breaks the flea life cycle by preventing development into adult Fleas*
- Contains NYLAR® and Insect Growth Regulator

Residual Claims

- Provides residual control against fleas and other listed pests*
- Long-Lasting [up to] [1/2/3 month(s)] [4/8/12 week(s)] [30/60/84 day(s)] [Control] against fleas*.

- 4/8/12 Week Control/Residual against fleas*
- Lasts/Works/Effective [for up to] [[1/2/3 month(s)] [4/8/12 weeks] [30/60/84 days]*
- [Helps/May/Can] Prevent[s] (Re-)infestation and Flea build-up for [up to] [1/2/3 month(s)] [4/8/12 weeks] [30/60/84 days]
- [Helps/May/Can] Prevent[s] Flea Infestation for [up to] [1/2/3 month(s)] [4/8/12 weeks] [30/60/84 days]

*Prevents adult flea emergence outdoors for up to 3 months /12 weeks /84 days

Barrier Claims

- Helps/May/Can Prevent[s] flea infestations in your yard

Site Use Claims

- For [Residential] Indoor/Outdoor [Residential] Use [Only]
- [For] Indoor and/or Outdoor Use
- For Use Around Residential [Home] Areas [Only]
- For Use on Residential Lawns, Gardens, Patios and Home Picnic Areas [Only]
- For Use On: Lawns, Ground Covers, Patios, Wooden Structures, and Foundations Around Homes
- For use On [Lawns], [Trees], [Shrubs], [Ornamentals], [Roses] and [Flowers]
- Can be applied to Tree Bark
- Treat Soil to Protect Ornamentals
- Penetrates Deep into Cracks and Crevices
- Perfect for Vertical Cracks and Surfaces
- Perfect for Uneven and Difficult to Reach Surfaces
- Foundation and Void Uses
- Surround [your] Whole [Home] Foundation
- Stops listed pests in Your Lawns, Trees, Shrubs & Flowers
- [Also] Stop(s) listed pests /Fleas in Your Lawns [Trees and Shrubs] [Roses & Flowers] [Fruits & Nuts] [Vegetables] [Gardens]
- Spray Around Yard Perimeter
- Treat Outside Surfaces of Buildings, Porches, Wooden Decks, Patios, Fences, Foundations, Wood Piles and Tree Stumps
- Outdoor Building Perimeter Treatment
- Yard & Kennel Spray
- Use on Lawn and other outdoor areas where listed pests congregate
- Home Foundation [and Soil] Treatment
- Use on carpets/rugs/wall board/drapes /around pet bedding areas/ kennel/or doghouse

Water-based formula claims

- No Stains
- Will Not Stain/Non-Staining on [Water-Safe Surfaces]
- Water-based/Non-staining [Formula]
- Dries clear
- Odor Free
- Odorless
- Fragrance-Free
- Unscented
- No lingering/lasting [chemical] odor
- Dries fast/quick[ly]
- Water based [formula] [water droplet icon]
- Non-flammable
- No oily/sticky mess/residue [to clean]
- Dries Clear
- Water-Based Odor-Free formulation

Coverage Claims

- [Coverage:] [1 quart] 32 oz Treats Up to 4,000 square feet of lawn
- [1 pint] 16 oz Treats Up to 2,000 square feet of lawn
- Dilute 4 fluid ounces per gallon of water to treat 500 square feet
- [1 pint] 16 oz Treats Up to 2,000 square feet
- [1 quart] 32 oz Treats Up to 4,000 square feet

General Claims

- Ready to Use/Spray [Concentrate]
- Concentrate
- Dual [Modes of] action: Contact [Kill]– Residual [Control]
- Apply when you Need it and Works when you Leave it
- Apply before Insects Invade
- Apply prior to change of/ [at the beginning of each] season for prevention and best results
- Two in One: Crack and Crevice, Spot Treatment
- Lawn/Flower & Garden Insect Killer
- Contains Esfenvalerate, a residual contact control insecticide that controls [kills] many listed hard-to-kill sucking and chewing insects
- Pre-Season Treatment
- Home perimeter treatment

Convenience Claims

- Know You Have your Home Covered
- Back Saver
- [No Mess]/[Easy to Use]/[No Mixing]
- Convenient Delivery Method
- No Mixing Required
- Ready to Use

Indoor Claims

- Outdoor Flea Control /Prevention
- 1 gallon Covers up to 1,500 square feet
- 2.52 mL/square foot
- Apply 128 fl oz (1 gallon) per 750 square feet
- One quart treats approximately 350 - 400 square feet

END OF OPTIONAL MARKETING