



UNITED STATES ENVIRONMENTAL PROTECTION AGENCY  
WASHINGTON, DC 20460

OFFICE OF CHEMICAL SAFETY  
AND POLLUTION PREVENTION

August 19, 2015

Jeanette Covert  
Authorized Representative  
Lebanon Seaboard Corporation  
C/O Product and Regulatory Associates, LLC  
P.O. Box 1683  
Voorhees, NJ 08043-9998

Subject: Label Amendment – Additional marketing claims and other minor changes  
Product Name: Turf Fertilizer Plus Dimension Weed Control  
EPA Registration Number: 961-417  
Application Date: March 19, 2015  
Decision Number: 503005

Dear Ms. Covert:

The amended label referred to above, submitted in connection with registration under the Federal Insecticide, Fungicide and Rodenticide Act, as amended, is acceptable. This approval does not affect any conditions that were previously imposed on this registration. You continue to be subject to existing conditions on your registration and any deadlines connected with them.

A stamped copy of your labeling is enclosed for your records. This labeling supersedes all previously accepted labeling. You must submit one copy of the final printed labeling before you release the product for shipment with the new labeling. In accordance with 40 CFR 152.130(c), you may distribute or sell this product under the previously approved labeling for 18 months from the date of this letter. After 18 months, you may only distribute or sell this product if it bears this new revised labeling or subsequently approved labeling. "To distribute or sell" is defined under FIFRA section 2(gg) and its implementing regulation at 40 CFR 152.3.

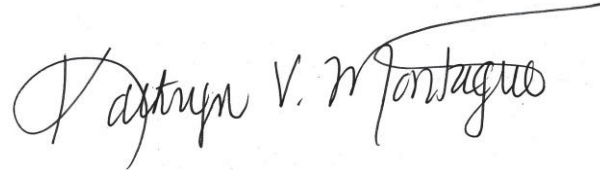
Should you wish to add/retain a reference to the company's website on your label, then please be aware that the website becomes labeling under the Federal Insecticide Fungicide and Rodenticide Act and is subject to review by the Agency. If the website is false or misleading, the product would be misbranded and unlawful to sell or distribute under FIFRA section 12(a)(1)(E). 40 CFR 156.10(a)(5) list examples of statements EPA may consider false or misleading. In addition, regardless of whether a website is referenced on your product's label, claims made on the website may not substantially differ from those claims approved through the registration process. Therefore, should the Agency find or if it is brought to our attention that a website contains false or misleading statements or claims substantially differing from the EPA approved registration, the website will be referred to the EPA's Office of Enforcement and Compliance.

Your release for shipment of the product constitutes acceptance of these conditions. If these conditions are not complied with, the registration will be subject to cancellation in accordance

Page 2 of 2  
EPA Reg. No. 961-417  
Decision No. 503005

with FIFRA section 6. If you have any questions, please contact Deirdre Sunderland by phone at (703)603-0851, or via email at [sunderland.deirdre@epa.gov](mailto:sunderland.deirdre@epa.gov).

Sincerely,

A handwritten signature in black ink that reads "Kathryn V. Montague". The signature is written in a cursive style with a long, sweeping horizontal line extending from the end of the name.

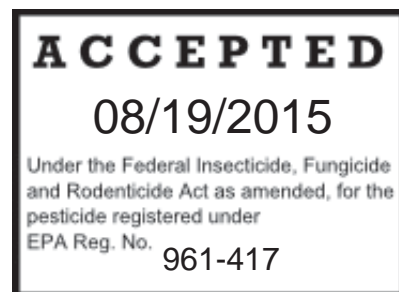
Kathryn V. Montague, Product Manager 23  
Herbicide Branch  
Registration Division (7505P)  
Office of Pesticide Programs

Enclosure

# TURF Fertilizer Plus Dimension® Weed Control

[Alternate Brand Names:

- Greenview® Crabgrass Control Plus Lawn Food
- Agway Greenlawn® Crabgrass Control & Fertilizer
- Forever Green Lawn Builder Plus Crabgrass Control
- Ace Green Turf Crabgrass Preventer with Fertilizer
- Preen Southern Weed Preventer Plus Plant Food
- GREENTHUMB® Crabgrass Preventer Plus Lawn Fertilizer
- EXPERT GARDENER® Crabgrass Preventer Plus Lawn Fertilizer
- VIGORO® Crabgrass Preventer Plus Lawn Fertilizer
- WONDERGRO® Crabgrass Preventer Plus Lawn Fertilizer
- GroundWork® Crabgrass Preventer Plus Lawn Fertilizer
- Preen Southern Weed Barrier Plus Plant Food
- Preen Southern Weed Barrier Plus Plant Food
- Preen Southern Weed Inhibitor Plus Plant Food
- Preen Southern Weed Shield Plus Plant Food
- Preen Southern Weed Eliminator Plus Plant Food
- Preen Southern Weed Defense Plus Plant Food
- Preen® Lawn Crabgrass Control & Fertilizer
- Preen® Lawn Crabgrass Control Plus Fertilizer
- Greenview Crabgrass Preventer Plus Lawn Food With Preen
- Groundwork Crabgrass Preventer Plus Lawn Fertilizer
- Preen Crabgrass Control
- Preen Crabgrass Preventer
- Preen Lawn Crabgrass Control
- Vigoro® Crabgrass Preventer & Lawn Fertilizer
- Agway® Crabgrass Control
- GreenView Crabgrass Prenventer Plus Lawn Food with Preen
- Vigoro Crabgrass Preventer & Lawn Fertilizer with Preen
- Greenview Fairway Formula Spring Fertilizer Crab Grass Preventer [use site must include fairways]



**For control of crabgrass and control or suppression of many other listed annual grass and broadleaf weeds in [ornamental landscape areas.] [established lawns and ornamental turf. [including fairways.]]**

**Active Ingredient:**

dithiopyr .....0.19%

**Other Ingredients:** .....99.81%

Total .....100.00%

Dimension® is a registered trade mark of Dow AgroSciences

**Guaranteed Fertilizer Analysis: XX-XX-XX †**

Total Nitrogen (N) .....	XX%
Ammoniacal Nitrogen .....	XX%
Water Insoluble Nitrogen* .....	XX%
Urea Nitrogen* .....	XX%
Other Water Soluble Nitrogen* .....	XX%
Available Phosphate(P <sub>2</sub> O <sub>5</sub> ).....	XX%
Soluble Potash (K <sub>2</sub> O) .....	XX%
Sulfur (S).....	XX%
Calcium (Ca).....	XX%
Magnesium (Mg) .....	XX%
Copper (Cu) .....	XX%
Iron (Fe) .....	XX%
Manganese (Mn) .....	XX%
Zinc (Zn).....	XX%

† This product may be formulated with one or more of the following fertilizer materials: polymer-coated sulfur-coated urea, urea, methylene urea, sulfur coated urea, ammonium phosphate, ammonium sulfate, sulfate of potash, muriate of potash, copper sulfate, iron oxide, manganese sulfate, zinc oxide, dolomite or limestone.

Note: Fertilizer grades with nutrient contents expressed as the percentage of N, P<sub>2</sub>O<sub>5</sub> and K<sub>2</sub>O (X-X-X) may contain macronutrients and micronutrients.

\*x.x Slowly available nitrogen from [note to reviewer: list sources such as methylene urea, sulfur coated urea and polymer-coated sulfur-coated urea]

**KEEP OUT OF REACH OF CHILDREN  
CAUTION**

See [back panel][booklet][container label] for First Aid and additional Precautionary Statements.

**NOTICE: Read the entire label. Use only according to label directions. Before buying this product, read the Warranty Section elsewhere on this label. If terms are not acceptable, return the unopened container at once.**

**EPA Reg. No. 961-417**

**(L) (D)**

**EPA Est. No. 961-PA-01, 961-IL-01**

**Superscript used is first letter of lot number**

**[MANUFACTURED BY:] [Distributed by:] [Produced for:]  
LEBANON SEABOARD CORPORATION  
1600 EAST CUMBERLAND STREET  
LEBANON, PA 17042**

**[Optional]Made [in the U.S.A.][of U.S. and imported parts][of U.S. and global components]  
[www.lebsea.com] [www.greenviewfertilizer.com] [www.preen.com]  
Covers [X,XXX] Square Feet [SQUARE FEET] [SQ. FT.] [Sq. Ft.] [Sq Ft][sq ft] [sq. ft.]  
Net Weight: [Net Wt.:[Net Wt/] xx lbs. [LBS.][lb] [LB] [POUNDS] (xx.x kg) [(XX.X KG)]  
Treats: XX,XXX Sq.Ft. [SQ.FT.] [Square Feet] [SQUARE FEET] [Sq Ft][sq ft] [sq. ft.]  
Xxx lb. covers up to xxx sq. ft. [of turfgrass]**

[Optional Heading: Care & Handling]

---

## PRECAUTIONARY STATEMENTS

---

### HAZARDS TO HUMANS AND DOMESTIC ANIMALS

#### CAUTION

**Causes moderate eye irritation. Avoid contact with eyes or clothing. Use Protective eyewear when using Battery Powered Spreader and Battery Powered Cap. Wash thoroughly with soap and water after handling and before eating, drinking, chewing gum, or using tobacco.**

#### First Aid

**If in eyes:** Hold eye open and rinse slowly and gently with water for 15-20 minutes. Remove contact lenses, if present, after the first 5 minutes, then continue rinsing eye. Call a poison control center or doctor for treatment advice.

**If inhaled:** Move person to fresh air. If person is not breathing, call 911 or an ambulance, then give artificial respiration, preferably mouth-to-mouth if possible. Call a poison control center or doctor for further treatment advice.

Have the product container or label with you when calling a poison control center or doctor, or going for treatment. For Emergency Medical Treatment Information call (888)208-1368.

### ENVIRONMENTAL HAZARDS

This product is toxic to fish and highly toxic to other aquatic organisms including oysters and shrimp. Use with care when applying to [turf] [ornamental landscape] areas adjacent to any body of water. Drift and runoff from treated turf may adversely affect aquatic organisms in adjacent aquatic sites. Do not apply when weather conditions favor drift from treated areas. To protect the environment, do not allow pesticide to enter or run off into storm drains, drainage ditches, gutters or surface waters. Applying this product in calm weather will help to ensure that wind does not blow pesticide off the treatment area. Sweeping any product that lands on a driveway, sidewalk, or street, back onto the treated area of the [lawn or garden] will help to prevent run off to water bodies and drainage systems.

---

## DIRECTIONS FOR USE

---

It is a violation of Federal law to use this product in a manner inconsistent with its labeling. Read all Directions for Use carefully before applying.

---

[Note to reviewer that the following section is for Turfgrass application]  
TURFGRASS

How This Product Works [Product Information]

Not for use on turf being grown for sale or other commercial use as sod, or for commercial seed production, or for research purposes.

[[TURF Fertilizer Plus Dimension® Weed Control or This product] can be applied up to 4 weeks later than other crabgrass preventers and provides up to 4 months of crabgrass control.]

[TURF Fertilizer Plus Dimension® Weed Control or This product] provides preemergence control of crabgrass and control or suppression of other listed weeds when applied prior to their germination. In addition, this product provides postemergence control of seedling crabgrass after germination and emergence. Postemergence control is limited to crabgrass only, but is effective up to 4 weeks after crabgrass has germinated. This generally corresponds to the time when crabgrass seedlings first become visible [in] [the established turfgrass] [or] [flower beds, and around ground covers, trees and shrubs]. Do not apply this product later than 4 weeks after crabgrass germination.]

[Use Restrictions]

**[Editor's note: Select appropriate state restriction when product is going into listed state.]**

- Florida Applications: Do not exceed [2] [3] applications per year on bahiagrass in the north. Do not apply more than 6.0 lb. of this product per 1,000 sq. ft. per application and no more than 18.0 lb. of this product/1,000 sq. ft. per year (equivalent to 0.5 and 1.5 lb of active ingredient per acre, respectively).
- Florida Applications: Do not exceed [2] [3] [4] applications per year on bahiagrass in [central Florida][the south]. Do not apply more than 6.0 lb. of this product per 1,000 sq. ft. per application and no more than 18.0 lb. of this product/1,000 sq. ft. per year (equivalent to 0.5 and 1.5 lb of active ingredient per acre, respectively).
- Florida Applications: Do not exceed [3] [4] [5] applications per year on bermudagrass in the north. Do not apply more than 6.0 lb. of this product per 1,000 sq. ft. per application and no more than 18.0 lb. of this product/1,000 sq. ft. per year (equivalent to 0.5 and 1.5 lb of active ingredient per acre, respectively).
- Florida Applications: Do not exceed [4] [5] [6] applications per year on bermudagrass in central Florida. Do not apply more than 6.0 lb. of this product per 1,000 sq. ft. per application and no more than 18.0 lb. of this product/1,000 sq. ft. per year (equivalent to 0.5 and 1.5 lb of active ingredient per acre, respectively).

- Florida Applications: Do not exceed [5] [6] [7] applications per year on bermudagrass in the south. Do not apply more than 6.0 lb. of this product per 1,000 sq. ft. per application and no more than 18.0 lb. of this product/1,000 sq. ft. per year (equivalent to 0.5 and 1.5 lb of active ingredient per acre, respectively).
- Florida Applications: Do not exceed [1] [2] applications per year on centipedegrass in the north. Do not apply more than 6.0 lb. of this product per 1,000 sq. ft. per application and no more than 18.0 lb. of this product/1,000 sq. ft. per year (equivalent to 0.5 and 1.5 lb of active ingredient per acre, respectively).
- Florida Applications: Do not exceed [2] [3] applications per year on centipedegrass in [central Florida][the south]. Do not apply more than 6.0 lb. of this product per 1,000 sq. ft. per application and no more than 18.0 lb. of this product/1,000 sq. ft. per year (equivalent to 0.5 and 1.5 lb of active ingredient per acre, respectively).
- Florida Applications: Do not exceed [2] [3] [4] applications per year on St. Augustinegrass in the north. Do not apply more than 6.0 lb. of this product per 1,000 sq. ft. per application and no more than 18.0 lb. of this product/1,000 sq. ft. per year (equivalent to 0.5 and 1.5 lb of active ingredient per acre, respectively).
- Florida Applications: Do not exceed [2] [3] [4] [5] applications per year on St. Augustinegrass in central Florida. Do not apply more than 6.0 lb. of this product per 1,000 sq. ft. per application and no more than 18.0 lb. of this product/1,000 sq. ft. per year (equivalent to 0.5 and 1.5 lb of active ingredient per acre, respectively).
- Florida Applications: Do not exceed [4] [5] [6] applications per year on St. Augustinegrass in the south. Do not apply more than 6.0 lb. of this product per 1,000 sq. ft. per application and no more than 18.0 lb. of this product/1,000 sq. ft. per year (equivalent to 0.5 and 1.5 lb of active ingredient per acre, respectively).
- Florida Applications: Do not exceed [3] [4] [5] applications per year on zoysiagrass in the north. Do not apply more than 6.0 lb. of this product per 1,000 sq. ft. per application and no more than 18.0 lb. of this product/1,000 sq. ft. per year (equivalent to 0.5 and 1.5 lb of active ingredient per acre, respectively).
- Florida Applications: Do not exceed [3] [4] [5] [6] applications per year on zoysiagrass in central Florida. Do not apply more than 6.0 lb. of this product per 1,000 sq. ft. per application and no more than 18.0 lb. of this product/1,000 sq. ft. per year (equivalent to 0.5 and 1.5 lb of active ingredient per acre, respectively).
- Florida Applications: Do not exceed [4] [5] [6] applications per year on zoysiagrass in the south. Do not apply more than 6.0 lb. of this product per 1,000 sq. ft. per application and no more than 18.0 lb. of this product/1,000 sq. ft. per year (equivalent to 0.5 and 1.5 lb of active ingredient per acre, respectively).

**[Editor’s note: “x” values will not exceed max cap rate as listed elsewhere on this label.]**

- Florida Applications: [X] annual feedings [with the exception of [listed turfgrass species (X feedings in the north and X feedings in the central and south).] This package applies X.X lbs of product per 1,000 sq. ft.]
- [For the state of Florida, do not apply more than [X.X] lbs of this product per 1,000 sq. ft. per application. The maximum number of applications of this product per treatment site is [XX] per year.]
- In the state of [insert state], apply a maximum of [XX.X] lb. product/1,000 sq.ft. [Make no more than [X] application[s] per year.]

Apply this product only to turfgrass species listed on this label. The following turfgrass species are tolerant to this product when applied as directed:

Cool-Season Grasses	Warm-Season Grasses
Bentgrass, creeping	Bahiagrass
Bluegrass, Kentucky	Bermudagrass
Fescue, fine	Buffalograss
Fescue, tall	Carpetgrass
Ryegrass, perennial	Centipedegrass
	St. Augustinegrass
	Zoysiagrass

### Restrictions

- Do not use clippings from treated turf for mulching around vegetables or fruit trees.
- Do not allow people or pets to enter treated area until dust has settled.
- Do not apply more than 6.0 lb. of this product per 1,000 sq. ft. per application and no more than 18.0 lb. of this product/1000 sq. ft. per year (equivalent to 0.5 and 1.5 lb. of active ingredient per acre, respectively).
- In the state of New York, do not exceed 3.0 lb. of this product per 1000 sq. ft. per year (equivalent to 0.25 pounds of active ingredient per acre).
- Do not apply this product later than 4 weeks after crabgrass germination.

### Use Precautions

[TURF Fertilizer Plus Dimension® Weed Control or This product] must be applied only to lawns and ornamental turfgrasses that are well established. For newly established lawns, use the initial application of this product only after turfgrasses have developed a vigorous root system, uniform stand, and received at least two mowings following seeding, sodding, or sprigging. Exception: In newly established lawns of Kentucky bluegrass, perennial ryegrass and/or tall fescue, this product may be applied two weeks after the first sign of germination.

- Use of this product on lawns and ornamental turfgrasses that are not well established, or weakened by stress due to mechanical operations, pests, excessive temperatures, or lack of moisture may result in turfgrass injury.
- For best results, cultural practices that disturb the soil, such as core-, spike-, or hydro-aerification, and verticutting, are to be done before application of this product. Do not apply this product until turfgrass has recovered from the mechanical injury caused by these cultural practices.
- Reseeding, Overseeding, or Sprigging: Reseeding, overseeding, or sprigging of areas treated with this product within 10 weeks after a single application of this product or within 16 weeks after a split application program totaling 6.0 lb./1000 sq. ft. (0.5 lb. active ingredient per acre) or more may inhibit the establishment of desirable turfgrasses. When reseeding, overseeding follow proper cultural practices for seedbed preparation, seeding, irrigation and fertilization.



## Weeds Controlled or Suppressed

[TURF Fertilizer Plus Dimension® Weed Control] will provide control of crabgrass and control or suppression of other listed grass and broadleaf weeds when applied prior their germination.

### Grasses

barley  
barnyardgrass  
bluegrass, annual  
brome  
crabgrass, large  
crabgrass, smooth  
crabgrass, Southern  
crowfootgrass †  
dallisgrass  
goosegrass  
foxtail, green  
foxtail, yellow  
kikuyugrass †  
oats, wild  
ryegrass (annual & perennial)  
sandbur  
smutgrass

### Broadleaf Weeds

bittercress †  
carpetweed  
chickweed †  
geranium, Carolina †  
henbit  
knotweed, prostrate  
lespedeza, common †  
marestail  
medic, black  
mustard  
oxalis, buttercup  
pineappleweed  
pigweed, redroot  
parsley-piert †  
purslane, common  
rocket, London  
shepherdspurse  
speedwell, corn †  
spurge, garden  
spurge, prostrate  
spurge, spotted  
woodsorrel, creeping  
woodsorrel, yellow

† Suppression only

### How to Apply

#### [Option A]

To optimize product performance apply this product within a few days after mowing and delay mowing again for a few days after the application. Most effective weed control will be obtained when [TURF Fertilizer Plus Dimension® Weed Control or this product] is activated by rainfall or irrigation. Performance is improved if application is followed by ½ inch of rainfall or irrigation. Erratic weed control may result if not activated by rainfall or irrigation within 30 days after application.

#### [Option B]

- Apply within a few days of mowing
- Delay mowing again, for a few days after application.
- The most effective weed control occurs when [TURF Fertilizer Plus Dimension® Weed Control or this product] is activated by rainfall or irrigation, so if rain isn't in the forecast, water it in thoroughly.

**Optional Heading: SPREADER SETTINGS**

[Note: Registrant/Subregistrant may insert appropriate spreader setting information based on desired spreaders and specified use rates as listed. See spreader examples at the end of the label.]

Drop Spreaders	Calibration Settings at Specified Rate (lb./1000 sq. ft.)					
	1.5	2.1	2.3	2.7	3.1	6.0
Greenview® Spred III	XX	XX	XX	XX	XX	XX
Broadcast Spreaders						
Greenview® Jet-Spred II	XX	XX	XX	XX	XX	XX

These settings were calibrated and field tested. However, age and condition of spreader, speed of operation, and evenness of terrain may require slightly different settings for desired coverage.

*Optional Heading [Application Equipment and Instructions] [Spreader Directions]:*

**OPTION A**

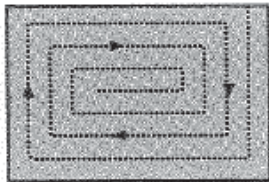
The above spreader settings are approximate. To check your spreader: 1 lb. of material covers approximately 370 sq. ft. (2.7 lbs. of material per 1,000 sq. ft.)

**Spreader Tips**

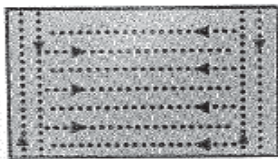
The two main types of spreaders are the Drop Spreader, which drops the material straight down the width of the spreader as you push, and the Broadcast Spreader (also known as a rotary), which throws the material from the spreader.

**Spreader Directions:**

**Broadcast Spreader:** Apply in a single pass by starting on the outside border and apply in a circular path working toward the center.

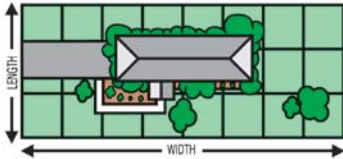


**Drop Spreader:** First make two passes along the top of the area you'll be covering. Then make two passes along the bottom area. Then move back and forth along the long part of the lawn. On each pass, as you reach the strips at the top and bottom of the area to be covered, shut off the spreader. It's also important to shut off the spreader when you are stopped.



### Determining Your Lawn's Square Footage

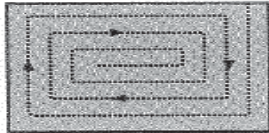
To determine how much of this product to apply, you must determine the square footage of your lawn. An easy way to do this is to walk the length of your lawn, figuring that one pace equals about 3 feet. Do the same with the width of the lawn. Then multiply the length by the width to arrive at the total. Make sure you subtract the square footage of your home and driveway when calculating the total square footage of your lawn. If your lawn has an irregular shape, try dividing it up into a number of square areas. Calculate the square footage for each area, then add the figures together to reach your total lawn size.



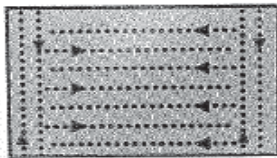
### OPTION B

#### Spreader Directions:

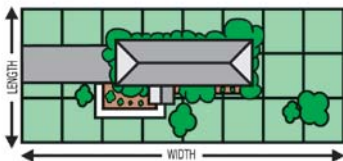
**Broadcast Spreader:** Apply in a single pass by starting on the outside border and apply in a circular path working toward the center.



**Drop Spreader:** First make two passes along the top of the area you'll be covering. Then make two passes along the bottom area. Then move back and forth along the long part of the lawn. On each pass, as you reach the strips at the top and bottom of the area to be covered, shut off the spreader. It's also important to shut off the spreader when you are stopped.



### Determining Your Lawn's Square Footage



To determine how much of this product to apply, you must determine the square footage of your lawn. An easy way to do this is to walk the length of your lawn, figuring that one pace equals about 3 feet. Do the same with the width of the lawn. Then multiply the length by the width to arrive at the total. Make sure you subtract the square footage of your home and driveway when calculating the total square footage of your lawn. If your lawn has an irregular shape, try dividing

it up into a number of square areas. Calculate the square footage for each area, then add the figures together to reach your total lawn size.

### **Spreader Tips**

The two main types of spreaders are the Drop Spreader, which drops the material straight down the width of the spreader as you push, and the Broadcast Spreader (also known as a rotary), which throws the material from the spreader.

The above spreader settings are approximate. To check your spreader: 1 lb. of material covers approximately 370 sq. ft. (2.7 lbs. of material per 1,000 sq. ft.)

**Note:** if spreader model does not appear above please call toll free 800-233-1067, 8 am - 5pm ET, Monday – Friday for additional model settings.

### OPTION C

#### **Determining Your Lawn's Square Footage**

To determine how much of this product to apply, you must determine the square footage of your lawn. An easy way to do this is to walk the length of your lawn, figuring that one pace equals about 3 feet. Do the same with the width of the lawn. Then multiply the length by the width to arrive at the total. Make sure you subtract the square footage of your home and driveway when calculating the total square footage of your lawn. If your lawn has an irregular shape, try dividing it up into a number of square areas. Calculate the square footage for each area, then add the figures together to reach your total lawn size.

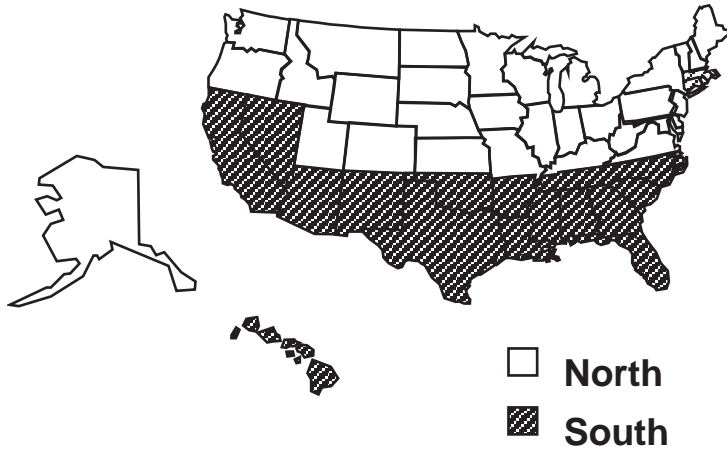
OPTION D – [none of the above]

### **How Much To Apply**

[TURF Fertilizer Plus Dimension® Weed Control or This product] will provide up to 4 months of crabgrass control when applied according to label directions. The actual length of control will vary depending on use rate, weather conditions, condition of the turfgrass, intensity of weed pressure, and the location or "Region" within the United States where this product is being applied.

**Refer to the map below to determine the region of the U.S. that includes your location.** Use the table below to determine the amount of [TURF Fertilizer Plus Dimension® Weed Control or this product] to apply in your location based on the desired length of weed control or need for postemergence crabgrass control.

Use "Regions" within the United States:



**Product Use Rates**

Amount of [TURF Fertilizer Plus Dimension® Weed Control] to Apply (Pounds of product to apply per 1,000 square feet of turfgrass †)			
Region of U.S.	----- Length of Crabgrass Control -----		
	2 - 3 months	3 - 4 months	Early Postemergence Control
North	1.5 lb./1000 sq. ft. (0.128 lb. ai/acre)	2.1 lb./1000 sq. ft. (0.174 lb. ai/acre)	2.7 - 6.0 lb./1000 sq. ft. †† (0.22 - 0.5 lb. ai/acre)
South	2.3 lb./1000 sq. ft. (0.192 lb. ai/acre)	2.7 - 3.1 lb./1000 sq. ft. †† (0.22-0.256 lb. ai/acre)	2.7 - 6.0 lb./1000 sq. ft. †† (0.22 - 0.5 lb. ai/acre)

† 1,000 square feet equals an area 100 feet X 10 feet or square area of about 32 feet on a side.

†† Use the higher rate in rate range in areas of high weed pressure or for increased length of control.

**When to Apply [Application Timing]**

[OPTION A]

**Spring Application**

**Control of Crabgrass:** [TURF Fertilizer Plus Dimension® Weed Control or this product] provides preemergence control of crabgrass and control or suppression of other listed weeds when applied prior to their germination. In addition, this product provides postemergence control of seedling crabgrass after germination and emergence. Postemergence control is limited to crabgrass only and is effective up to 4 weeks after germination of crabgrass. This generally corresponds to the time when crabgrass seedlings are at the 3-leaf stage of growth and first become visible in the established turf. This product will not control crabgrass at later growth stages when crabgrass plants begin to tiller (spread). Properly timed applications will control existing crabgrass and prevent further emergence of crabgrass seedlings. Do not apply this product later than 4 weeks after crabgrass germination.

**Control or Suppression of Other Grass and Broadleaf Weeds:** For control or suppression of other grass and broadleaf weeds, this product must be applied as a preventative treatment prior to their germination and emergence. Only crabgrass will be controlled with applications made up to 4 weeks after weed germination.

## Fall Application

This product can also be applied from late summer through early fall (late August through November). When applied in the fall, a sequential or second application of this product must be made the following spring to provide season-long control of crabgrass. If this product is applied in the fall, do not reseed, overseed or sprig turfgrasses within 12 weeks after application.

[OPTION B]

### When to apply:

Knowing when to apply crabgrass preventer is the primary key to success [in ridding lawns of this pesky weed]. It's all about the timing!

### Spring

- Crabgrass seeds begin to germinate when the soil temperature consistently reaches 55 to 60 [degrees][°] [Fahrenheit][F]. This coincides approximately between [forsythia and lilac] [other plant types] blooming. Provides post emergent control of crabgrass up to 4 weeks after germination. (When crabgrass seedlings are at 3-leaf stage growth and first visible within the lawn)
- This product does not control crabgrass at later growth stages.
- Suppresses other listed weeds when applied prior to germination.

Do not apply this product later than 4 weeks after crabgrass germinationControl or suppression of other grass and broadleaf weeds\* (as listed):

- This product must be applied as a pre-emergent treatment, prior to weed germination and emergence to be effective.
- Only crabgrass is controlled in a post-emergent stage, up to 4 weeks after germination.

\*See Use Directions for complete list of treated weeds. [This statement will appear in close proximity to the “\*”and appear once per page when used ]

### Late Summer to Early Fall

- This product can also be applied from late summer [late August] through early fall [September] [October] [November].
- When applied in the fall, a second application of this product must be made the following spring.
- When applying [this product] in the fall, do not reseed, overseed or sprig within 12 weeks after application.

---

[Note to reviewer this is the end of the Turfgrass application section]

---

[Note to reviewer use the following section is for ornamental landscape application.]

## ORNAMENTAL LANDSCAPE

For use on plants intended for aesthetic purposes or climatic modification and being grown in ornamental gardens or parks, [or on golf courses] or lawns.

[TURF Fertilizer Plus Dimension® Weed Control or This product] provides preemergence control or suppression of listed annual grass and broadleaf weeds in plantings of ornamental plants listed on this label.

[[TURF Fertilizer Plus Dimension® Weed Control or This product] works all season long. One easy application prevents listed weeds up to 4 months. This product contains a fertilizer to promote beautiful color, blooms, foliage and strong root growth. This product can be used anytime during the spring, summer or fall in flower gardens, around ground covers, trees and shrubs. Although this product will not kill existing weeds, it will prevent new listed weeds from sprouting – eliminating the need for difficult and time-consuming hand weeding. Without weeds, your valuable plants can grow larger and stronger. [Your beds will stay neat all season long.]

### **[Use Rates [Application Instructions] [How to Apply]**

Apply [TURF Fertilizer Plus Dimension® Weed Control or This product] with a properly calibrated spreader or other means that will assure uniform distribution. This product may be applied as a single application or as a split application. Split or sequential applications may be used to provide improved weed control or to provide extended weed control in areas with long growing seasons. To make a split application, divide the rate in the following table into separate applications made 5-10 weeks apart. Sequential applications may be made in the late summer following a spring application or in the spring after a fall application, provided the maximum application rates per year given below are not exceeded.

[Application instructions] [How to Apply]

To avoid plant injury, do not apply [TURF Fertilizer Plus Dimension® Weed Control or this product] when foliage is wet. When plants are dry, sprinkle [TURF Fertilizer Plus Dimension® Weed Control or this product] on soil surface at rate given [below, top right]. Once activated by watering, [TURF Fertilizer Plus Dimension® Weed Control or this product] forms a weed control barrier in the top layer of soil, preventing listed weed seeds from germinating. Disturbance to the soil surface after activation may result in erratic weed control.

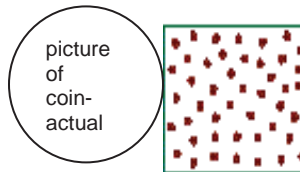
### Applying Around Established Plants

For flowers, roses, ground covers, ornamental grasses, shrubs and trees: sprinkle [TURF Fertilizer Plus Dimension® Weed Control or this product] evenly over the entire soil surface, at the rate of 9.6 oz. per 100 sq. ft. (6.0 lb per 1000 sq. ft.)^ [(see picture)], being sure to keep granules away from plant roots and foliage. Water [TURF Fertilizer Plus Dimension® Weed

Control] into soil surface. Always wash or brush off stray granules from plant foliage to avoid damage or discoloration.

#### Surface application rate

Sprinkle [TURF Fertilizer Plus Dimension® Weed Control or this product] as shown on soil surface.



#### Applying With Mulch

For best weed control, apply [TURF Fertilizer Plus Dimension® Weed Control or this product] after spreading mulch on your flower and shrub beds. Sprinkle [TURF Fertilizer Plus Dimension® Weed Control or this product] on top of mulch at 0.96 oz. per 10 sq. ft. or 9.6 oz. per 100 sq. ft. (6.0 lb per 1000 sq. ft.)<sup>^</sup> being sure to keep granules away from plant foliage. Water [TURF Fertilizer Plus Dimension® Weed Control or This product] into mulch. Always wash or brush stray granules from plant foliage to avoid damage or discoloration.

<sup>^</sup>In the state of New York use 4.8 oz. per 100 sq. ft. (3.0 lb. per 1000 sq. ft.) per year.

#### Application Timing and Directions [When To Apply]

[TURF Fertilizer Plus Dimension® Weed Control or This product] is a preemergence herbicide that will not control established weeds. Make applications prior to weed seed germination. Bare ground or mulched areas may be treated. The best weed control is obtained when applied to soil that is free of weeds and debris such as leaves. Prior to making an application, control existing vegetation by hand weeding, cultivation or with a postemergence herbicide. Avoid disturbance of treated areas. Loss of weed control may result if the treated soil surface is disturbed by soil mixing or tillage.

Apply [[TURF Fertilizer Plus Dimension® Weed Control or this product] in the spring, summer or fall around established plants and transplants. [Do not use [TURF Fertilizer Plus Dimension® Weed Control or this product] on flower seeds. Use after flowering plants have germinated and are 2-3 inches tall. Since it does not kill existing weeds, you must first remove any weeds that have already begun to grow. By applying [[TURF Fertilizer Plus Dimension® Weed Control or this product] as early as possible, you can reduce the need for hand weeding. Rain does not wash this product out of the soil. For optimum weed control and plant feeding, reapply this product every 4 months.

#### Restrictions

- **Not for use on Vegetable Gardens.**
- **Do not** use [TURF Fertilizer Plus Dimension® Weed Control or this product] on flower seeds.
- **Do not** apply this product directly to bare roots of ornamental plants as injury may result.



- **Do not** incorporate this product into soil. Dilution of active ingredient and possible injury to plant roots may occur.
- **Do not** apply to soil around ornamental plants that are under stress due to drought, flooding, excessive fertilizer or soil salts, wind injury, hail, frost damage, winter injury, injury from previously applied pesticides or injury due to insects, nematodes or disease.
- **Do not** apply under conditions that would affect product distribution. Wind could affect distribution and move product onto sensitive species. Uneven product distribution will result in uneven weed control.
- **Do not** allow people or pets to enter treated area until dust has settled.
- **Do not** apply more than 6.0 lb. of this product per 1,000 sq. ft. per application and no more than 18.0 lb. of this product/1000 sq. ft. per year (equivalent to 0.5 and 1.5 lb. of active ingredient per acre, respectively). The maximum number of applications per treatment site is 3 per year.
- In the state of New York, do not exceed 3.0 lb. of this product per 1000 sq. ft. per year (equivalent to 0.25 pounds of active ingredient per acre).

### **Use Precautions**

- Apply this product only to established ornamentals.
- To avoid foliar damage to ornamentals, irrigate immediately after application to remove herbicide particles from the foliage.

### **[Weeds Controlled or Suppressed]**

Used as directed, [TURF Fertilizer Plus Dimension® Weed Control or this product] will control crabgrass and control or suppress other listed grass and broadleaf weeds when applied prior to their germination. This product will not control established broadleaf weeds or grasses, except for crabgrass in early stages of development. The area to be treated must be free of weeds prior to application.

[Insert weed list]

**Grasses**

barley  
 barnyardgrass  
 bluegrass, annual  
 brome  
 crabgrass, large  
 crabgrass, smooth  
 crabgrass, Southern  
 crowfootgrass †  
 dallisgrass  
 goosegrass  
 foxtail, green  
 foxtail, yellow  
 kikuyugrass †  
 oats, wild  
 ryegrass (annual & perennial)  
 sandbur  
 smutgrass

**Broadleaf Weeds**

bittercress †  
 carpetweed  
 chickweed †  
 geranium, Carolina †  
 henbit  
 knotweed, prostrate  
 lespedeza, common †  
 marestail  
 medic, black  
 mustard  
 oxalis, buttercup  
 pineappleweed  
 pigweed, redroot  
 parsley-piert †  
 purslane, common  
 rocket, London  
 shepherdspurse  
 speedwell, corn †  
 spurge, garden  
 spurge, prostrate  
 spurge, spotted  
 woodsorrel, creeping  
 woodsorrel, yellow

† Suppression only]

**[Kills** these broadleaf weeds and grasses: carpetweed; henbit; knotweed, prostrate; marestail; medic, black; mustard; oxalis, buttercup; pineappleweed; pigweed, redroot; purslane, common; rocket, London; shepherdspurse; spurge, garden; spurge, prostrate; spurge, spotted; woodsorrel, creeping; woodsorrel, yellow; barley; barnyardgrass; bluegrass, annual; brome; crabgrass, large; crabgrass, smooth; crabgrass, Southern; dallisgrass; goosegrass; foxtail, green; foxtail, yellow; oats, wild; ryegrass (annual & perennial); sandbur; smutgrass

**Suppresses** these broadleaf weeds and grasses: bittercress ; chickweed; geranium, Carolina; lespedeza, common; parsley-piert; speedwell, corn; crowfootgrass; kikuyugrass]

**Acceptable for use on the following Ornamentals**

[TURF Fertilizer Plus Dimension® Weed Control or this product] is suggested for use around these established plants.

The ornamentals listed below have shown little to no injury to this product when applied according to label directions. However, this product has not been tested on all ornamental species, all cultivars of species on this label, or under all possible growing conditions. For species or cultivars not listed, it is suggested that a few plants in a limited area be treated and observed for potential injury under local growing conditions prior to large-scale use.

<b>Common Name</b>	<b>Botanical Name</b>	<b>Acceptable Cultivars</b>
Abelia, Dwarf	<i>Abelia X grandiflora</i>	Nana
Ajuga	<i>Ajuga reptans</i> <i>Ajuga genevensis</i>	Bronze Bronze Beauty
Almond, Flowering	<i>Prunus gladulosa</i>	
Apple †	<i>Malus pumila</i>	
Arborvitae	<i>Thuja occidentalis</i>	Nigra Pyramidalis Smaragh Techny Woodwardii
Arborvitae, Golden	<i>Thuja orientalis</i>	
Aster, Chinese	<i>Callistephus chinensis</i>	Dwarf Queen
Ash, Green	<i>Fraxinus pennsylvanica</i>	
Ash, Mountain	<i>Sorbus aucuparia</i>	
Ash, Purple	<i>Fraxinus americana</i>	
Azalea	<i>Rhododendron</i> spp.	Brilliant Buccaneer Carror Chimes (Belgian) Elsie Lee Exbury Fashion Hardijzer Beauty Hershey Red Higasa Hinocrimson Holland (Hybrid) Marion Lee Northern Lights Orange Cup Orchid Lights Snow Southern Charm
Azalea, Flame	<i>Rhododendron calendulaceum</i>	
Azalea, Kirishima		
Bamboo, Heavenly		
Barberry	<i>Berberis thunbergii</i>	Aurea Dwarf Pigmy Green Kobold Pygmy Red Rose Glow

Barberry, Purple		Atropurpurea
Basket flower	<i>Gaillardia grandiflora</i>	
Bearberry (common)	<i>Arctostaphylos uva-ursi</i>	Massachusetts
Bee Balm	<i>Monarda didyma</i>	
Begonia	<i>Begonia</i> spp.	
Birch, River	<i>Betula nigra</i>	
Blackeyed Susan	<i>Rudbeckia hirta</i>	Goldstrum
Blanket Flower	<i>Gaillardia</i> spp.	
Blueberry †	<i>Vaccinium</i> spp.	Bluecrop Blue Jay Jersey North Blue Northland
Bottlebrush	<i>Callistemon citrinus</i>	
Boxwood, Japanese		Japonica
Boxwood, Weller	<i>Buxus sempervirens</i>	
Broom	<i>Cytisus</i> spp. <i>Genista pilosa</i>	Moonlight Vancouver Gold
Bugle Carpet		
Camellia	<i>Camellia japonica</i>  <i>Camellia sasanqua</i>	Debutante Mathotiana Supreme Chansonette
Candy Tuft	<i>Iberis</i> spp.	Snow White
Carex, Variegated	<i>Carex</i>	
Cedar, Red	<i>Juniperus virginiana</i>	
Celosia	<i>Celosia</i> spp.	
Centaura	<i>Centaurea montana</i>	
Cockscomb, Plumosa	<i>Celosia cristata</i>	Scarlet Plumosa
Coleus	<i>Coleus blumei</i>	Red Kewpie
Columbine	<i>Aguilegia</i> spp.	
Copper leaf	<i>Acalypha wilkesiana</i>	
Coreopsis	<i>Coreopsis</i> spp.	Moonbeam,
Corn Flower	<i>Centaurea</i> spp.	
Cotoneaster	<i>Cotoneaster apiculatus</i>	
Coyotebrush	<i>Baccharis pilularis</i>	
Cycads	<i>Cycas revoluta</i>	
Cypress, Bald	<i>Taxodium distichum</i>	
Cypress, Italian	<i>Cupressus sempervirens</i>	Glauca
Cypress, Japanese False	<i>Chamaecyparis obtusa</i>	Gracilis
Cypress, Leyland	<i>Cupressocyparis leylandii</i>	
Daffodil	<i>Narcissus</i> spp.	King Alfred

Daylilly	<i>Hemerocallis</i> spp.	Aztec Gold Bright Yellow (Hybrid) Single Gold (Evergreen) Wilsonís Yellow
Dianthus (Sweet William)	<i>Dianthus</i> spp.	
Delphinium	<i>Delphinium</i> spp.	Magic fountain
Dogwood	<i>Cornus florida</i>	
Dogwood, American	<i>Cornus sericea</i>	Flavarimaea
Douglas Fir	<i>Pseudotsuga menziesii</i>	
Dusty Miller	<i>Senecio cineraria</i>	
Elm, Drake	<i>Ulmus parvifolia</i>	
Euonymus	<i>Euonymus fortunei</i>	Argenteo-variegata Auereo-marginata Colorata Emerald Gaiety Emerald ãN Gold Gold Edge Gold Princess Silver King Tricolor Vegetus
Fan Palm, European	<i>Chamaerops humilis</i>	
Fan Palm, Mexican	<i>Washingtonia robusta</i>	
Fern (various)	<i>Asparagus</i> spp.	
Fescue	<i>Festuca glauca</i>	
Fetterbush	<i>Leucothoe fontanesiana</i>	Rainbow
Ficus	<i>Ficus retusa</i>	Nitidia
Fir Fraser	<i>Abies fraseri</i>	
Forsythia	<i>Forsythia X intermedia</i>  <i>Spring Glory</i>	Arnold Dwarf Bronxensis Dwarf Lynwood Gold Meadowlark Weeping
Fuchsia	<i>Fuchsia</i> spp.	
Galium	<i>Galium odoratum</i>	
Gardenia	<i>Gardenia jasminoides</i>	Mystery Radicans
Geranium	<i>Pelargonium X hortorum</i>	
Gum	<i>Eucalyptus citriodora</i>	
Hawthorn	<i>Crataegus</i> spp.	Cockspur White Crimson Cloud Enchantress Jack Evans Washington White
Heather, Twisted	<i>Erica cinerea</i>	Mediterranean Pink

Hemlock, Canada	<i>Tsuga canadensis</i>	
Hibiscus	<i>Hibiscus</i> spp.	Blue Bird Brilliant Hula Girl
Holly	<i>Ilex</i> spp.  <i>Ilex X meserveae</i>         <i>Ilex X attenuata</i>	Blue Boy Blue Girl Burfodii China Girl Compacta Forsteri Hellerie Japanese Northern Beauty Needlepoint Nellie R. Stevens Savannah
Holly, Chinese	<i>Ilex cornuta</i>	
Holly, Japanese	<i>Ilex crenata</i>	
Holly, Yaupon	<i>Ilex vomitoria</i>	
Honeysuckle	<i>Lonicera japonica</i>	Claveyís Dwarf Halliana Tatarian Canadian White Zebelli Red Hosta
Hosta	<i>Hosta</i> spp. <i>Hosta lancifolia</i>	Albo Marginata
Ice Plant	<i>Carpobrotus edulis</i>	
Impatiens	<i>Impatiens</i> spp.	
Iris	<i>Iris</i> spp.	Dwarf Blue Wedgewood
Ivy, English	<i>Hedera helix</i>	Bulgaria Thorndale
Jasmine, Asian	<i>Trachelospermum asiaticum</i>	
Juniper	<i>Juniperus</i> spp.	Arcadia Armstrong Bar Harbor
	<i>Juniperus horizontalis</i>	Blue Chip Blue Pacific Blue Rug

	<i>Juniperus horizontalis</i>	Blue Star Broadmoor Buffalo Calgary Carpet Emerald Sea Emerald Spreader Endora Compacta Fruitlandi Green Gold Tip Hetzi Hughes Manhattan Blue Parsoni Pfitzeriana Plumosa Prince of Wales Procumbens Dwarf San Jose Sargent Blue Sargent Green Scandia Scopulorum Moonglow Scopulorum Skyrocket Spartan
	<i>Juniperus chinensis</i>	Tamariscifolia
	<i>Juniperus sabina</i>	Weberi Youngstown Yukon Belle
King Palm	<i>Archontophoenix cunninghamiana</i>	
Laurel, Australian	<i>Pittosporum tobira</i>	
Laurel, Mountain	<i>Kalmia latifolia</i>	
Leucothoe	<i>Leucothoe fontanesiana</i>	
Ligustrum, Japanese	<i>Ligustrum japonicum</i>	
Lily, African	<i>Agapanthus africanus</i>	Albus Peter Pan
Lily, African Blue		
Lily of the Valley	<i>Pieris japonica</i>	Mt. Fire
Lilyturf	<i>Liriope muscari</i>	Evergreen Giant Lilac Beauty Majestic Monroe White Variegata
Liriope, Green	<i>Liriope spicata</i>	
Maple, Japanese	<i>Acer japonicum</i>	

Maple, Norway	<i>Acer platanoides</i>	
Maple, Red †	<i>Acer rubrum</i>	
Maple, Silver	<i>Acer saccharinum</i>	
Maple Sugar †	<i>Acer saccharum</i>	
Marigold	<i>Tagetes patula</i>	Honeycomb Variegata Wheeler's Dwarf
Mock Orange †	<i>Philadelphus spp</i>	Golden Snowflake Double White
Mondo Grass	<i>Ophiopogon japonicus</i>	
Moss Rose	<i>Portulaca grandiflora</i>	Sunnyside
Myrtle, Crape	<i>Lagerstroemia indica</i>	Faurei Langer Muskogee Standard Pink
Myrtle, Wax	<i>Myrica cerifera</i>	
Nandina	<i>Nandina domestica</i>	Compacta Nana
Narcissus	<i>Narcissus spp.</i>	
Oak, Laurel	<i>Quercus laurifolia</i>	
Oak, Pin	<i>Quercus palustris</i>	
Oak, Red	<i>Quercus rubra</i>	
Oak, Southern	<i>Quercus virginiana</i>	
Oak, Willow	<i>Quercus phellos</i>	
Oleander	<i>Nerium oleander</i>	Hardy Red Petite Pink Sister Agnes
Osteospermum	<i>Osteospermum fruticosum</i>	Wirligig
Pachysandra	<i>Pachysandra terminalis</i>	
Palm, Bangalow		
Pampas Grass	<i>Cortaderia selloana</i>	
Pansy	<i>Viola x wittrockiana</i>	
Paper Flower	<i>Bougainvillea glabra</i>	Barbara Karst
Peach †	<i>Prunus persica</i>	
Periwinkle, Dwarf	<i>Vinca minor</i>	
Petunia	<i>Petunia X hybrida</i>	Picoti
Photinia, Red Tip	<i>Photinia X fraseri</i>	
Pieris	<i>Pieris japonica</i>	
Pine, Australian	<i>Pinus nigra</i>	
Pine, Japanese Black	<i>Pinus thunbergiana</i>	
Pine, Loblolly	<i>Pinus taeda</i>	
Pine, Longleaf	<i>Pinus palustris</i>	
Pine, Mugo	<i>Pinus mugho</i>	
Pine, Scotch	<i>Pinus sylvestris</i>	



Pine, Slash	<i>Pinus elliottii</i>	
Pine, Swiss Mt.	<i>Pinus mugo</i>	
Pine, Virginia	<i>Pinus virginiana</i>	
Pine, White	<i>Pinus strobus</i>	
Pineapple, Guava †	<i>Feijoa sellowiana</i>	
Pieris	<i>Pieris taiwanensis</i>	
Pittosporum, Japan		
Potentilla	<i>Potentilla nepalensis</i> <i>Potentilla fruticosa</i>	Abbotswood
Privet	<i>Ligustrum japonicum</i>	Golden Vicary Regal Texanum Wax Yellow Tipped
Privet, Glossy	<i>Ligustrum lucidum</i>	
Pyracantha	<i>Pyracantha koidzumii</i>	Gnome Lalandei Victory
Queen Palm	<i>Arecastrum rammanzoffianum</i>	
Quince, Japanese †		
Rhododendron	<i>Rhododendron spp</i>	Album Cunningham White Fashion Hardy PJM Purple Gem Silvery Pink
Rhododendron, Carolina	<i>Rhododendron carolinianum</i>	
Rhododendron, Catawba	<i>Rhododendron catawbiense</i>	
Rockcress	<i>Arabis spp.</i>	Snowcap
Rhodie Max (Rosebay)	<i>Rhododendron maximum</i>	
Rose †	<i>Rosa banksiae</i>	Luta
Rosemary †	<i>Rosmarinus officinalis</i>	
Rosemary, Bog	<i>Andromeda polifolia</i>	Nana
Salvia	<i>Salvia farinacea</i>	Rhea
Sedum	<i>Sedum spurium</i>	Dragon Blood Red Red Carpet Yellow
Snapdragon	<i>Antirrhinum spp.</i>	
Sourwood	<i>Oxydendrum arboreum</i>	
Spiraea	<i>Astilbe X arendsii</i>	Fanall

Spiraea	<i>Spiraea</i> spp.	Anthony Waterer Red Dolchica Froebeli Pink Goldenflame Red Snowmound White Van Houtte White
Spiraea, Garland	<i>Spiraea</i> spp.	
Spruce, Black Hills	<i>Picea glauca</i>	
Spruce, Colorado Blue	<i>Picea pungens</i>	
Spruce, Norway	<i>Picea abies</i>	
Spruce, White	<i>Picea glauca</i>	Conica
Sweetflag, Grassyy-Le		
Sweetgum	<i>Liquidambar styraciflua</i>	
Sycamore	<i>Platanus occidentalis</i>	
Tree Fern (Tiki Fern)	<i>Asparagus virgatus</i>	
Trumpet Flower, Evening	<i>Gelsemium sempervirens</i>	
Tulip	<i>Tulip</i> , spp	Apeldoorn
Verbena, Shrub	<i>Lantana sellowiana</i>	
Vervain	<i>Verbena</i> spp.	St. Paul
Viburnum	<i>Viburnum</i> spp.	American Cranberry Bush Arrowwood Common Snowball European Cranberry Bush Linden Mohican Wright
Vinca ( Periwinkle)	<i>Vinca minor</i>	
Windmill Palm	<i>Trachycarpus fortunei</i>	
Xylosma	<i>Xylosma congestum</i>	
Yarrow	<i>Achillea</i> spp.	
Yaupon	<i>Ilex vomitoria</i>	Dwarf
Yew	<i>Taxus cuspidata</i> <i>Taxus X media</i>	Denisiformis

† **Ornamental species only: Do not use on food producing trees and ornamentals.**

---

[Note to reviewer this is the end of ornamental landscape application section.]

**REFILL INSTRUCTIONS:**

[Optional for reusable rigid plastic container with application device]

- [This container with [applicator cap] [spreader applicator] [Ready2Go Spreader™] is reusable with [TURF Fertilizer plus Dimension Weed Control or this product].
- Refill the container with desired amount of this product and use as directed.
- When done, store or dispose of this container as listed on the label.]

**REFILL INSTRUCTIONS**

[Optional for reusable rigid plastic container with application device][This container with [applicator cap] [spreader applicator] [Ready2Go Spreader™] is reusable with [TURF Fertilizer Plus Dimension Weed Control or this product]. Refill the container with desired amount of this product and use as directed. When done, store or dispose this container as listed on the label.]

**Storage and Disposal**

Do not contaminate water, food or feed by storage and disposal.

**Pesticide Storage:** Store this product only in its original container in a cool, dry, locked place out of the reach of children and animals.

**Pesticide Disposal and Container Handling:** Nonrefillable container. Do not reuse or refill this container. **If empty:** Place in trash or offer for recycling if available. **If partly filled:** Call your local solid waste agency for disposal instructions. Never place unused product down any indoor or outdoor drain.

[Optional Storage and Disposal statement for use with reusable containers.]

**STORAGE AND DISPOSAL**

Do not contaminate water, food or feed by storage and disposal.

**Pesticide Storage:** Store product in its original container in a cool dry, locked place out of the reach of children and animals.

**Pesticide Disposal and Container Handling:** Nonrefillable container. Do not reuse or refill this container except as described in the DIRECTIONS FOR USE (see Refill Instructions). **If**

**Empty:** Place in trash or offer for recycling if available. **If partly filled:** Call your local solid waste agency for disposal instructions. Never place unused product down any indoor or outdoor drain.

**[WARRANTY:**

[NOTE] To the extent consistent with applicable law, Buyer assumes all responsibility for safety and performance if this product is not used according to the directions.]

Appendix 1

[Optional Label Claims]

**Claims Miscellaneous**

1. [Bar code] [product number]
2. [Item number]
3. [Not] Proof of Purchase
4. If the fertilizer guarantee contains iron, the following statement must appear:  
[Note:] [Notice:] This product contains the secondary nutrient iron. Iron may stain concrete surfaces and should not be applied on dry or water dampened concrete and must be removed from these areas promptly after application by sweeping or blowing. Do not wash off with water.
5. The following statement must appear (relevant to the fertilizer guarantee):  
[Note:] Information regarding the contents and levels of metals in this product is available on the internet at <http://www.regulatory-info-lebsea.com>.
6. The following statement may appear when the application rate applies less than 1 pound of nitrogen per 1,000 sq. ft.:  
[Note:] Supplemental applications of lawn fertilizer are needed to achieve a minimum of 1 pound nitrogen per 1,000 sq. ft.
7. For use on cool and warm season turfgrass
8. For use on:  
[bermudagrass], [centipedegrass], [zoysiagrass], [Kentucky bluegrass], [perennial ryegrass], [tall fescue], [bahiagrass], [buffalograss], [carpetgrass], [St. Augustinegrass], [creeping bentgrass], [fine fescue].
9. Questions or Comments? Call 1-xxx-xxx-xxxx. (insert phone graphic)
10. This Bag Treats Up to \_\_\_\_\_ Square Feet

11.



(MST – Mobile Scan Tag / color) Note, actual symbology varies from product to product, as with UPC codes.

12.  (MST – Mobile Scan Tag / black & white)

13.  (MST – Mobile Scan Tag / black and white with phone icon)



- 14. Scan the code to watch how Preen's Battery Powered Spreader (works)(makes preventing weeds easier than ever.) (or visit <http://preen.com/videos/battery-powered-spreader>))

- 15. [QR Code] [For more information about this product, please use your mobile device to scan the barcode. Data rates may apply]

- 16. QR Code Image

- 17.



[[www.greensmart.com](http://www.greensmart.com)]

[For more information about this product, please use your mobile device to scan the barcode. Data rates may apply]



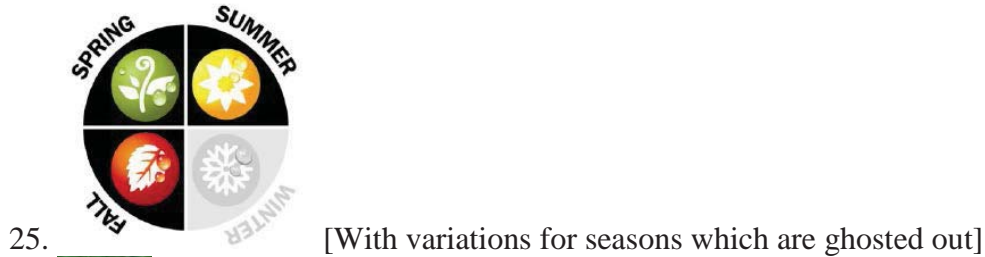
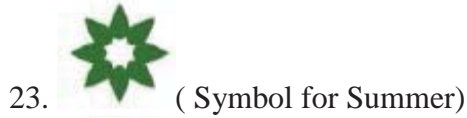
- 18. (Scan the code to watch how Preen prevents weeds (or visit <http://www.preen.com/preventweeds>) )



- 19. (Symbol for Spring)



- 20. (Symbol for Summer)



27. [2] [3] [4] Season Lawn Care Program

28. [Specially] formulated for southern [gardens] [climates]

29. Another great lawn and garden product, from the makers of Preen®.

30. Apply in [Spring], [Summer], [Fall]

31. Apply throughout the growing season

32. Apply when weeds are growing [-spring, summer or fall]

33. Does not harm listed (grasses) (flowers) (trees) (&/and) (shrubs)

34. Easy to Use.

35. Flowers [pictogram placeholder for flowers]

36. for [Warmer] [Warm] [Hot] Climates

37. For residential use

38. For Southern [flower] [Beds] [Climates] [Gardens] [Landscapes]

39. For use on lawns

40. Good Housekeeping Seal of Approval (logo)

41. Money Back Guarantee

42. No stain formula

43. NOW FEATURING: [GreenSmart<sup>o</sup>] [GreenSmart logo] [

44. Pet access allowed - once fertilizer dust settles.

45. Pet access to lawn once fertilizer dust from application settles.

46. Pet access to lawn within [24] hours of treatment.

47. Proven performance.
48. See inside booklet for complete directions for use[,and] plant listings[, & precautionary statements]
49. [Southern] [Heat Smart] Formula [for Southern Gardens]
50. Sprinkle around listed flowers, trees[,] [and] shrubs
51. To open cut along dotted line [pictogram place holder scissors]
52. Try [these] other Preen products:
  - [Preen Organic Vegetable Garden Weed Preventer]
  - [Preen Landscape Weed Control Fabric]
  - [Preen Lawn Weed Control]
  - [Preen Lawn Stepsaver Weed Control Plus Fertilizer]
  - [Preen Lawn Weed & Feed]
  - [Preen Mulch Plus]
  - [Preen Lawn Crabgrass Control]
  - [Preen Weed Control Plus Crabgrass Preventer]
  - [Preen [Garden] Weed Preventer Plus Plant Food]
  - [Preen Weed & Grass Killer]
  - [Preen [Garden] Weed Preventer]
  - [Preen [Garden] Weed Preventer with Battery-Powered Spreader Cap]
  - [Preen Southern Weed Preventer]
  - [Preen Southern Weed Preventer with Battery-Powered Spreader Cap]
  - [Preen Southern Weed Preventer Plus Plant Food]
  - [Landscape Mulch]
53. Use around listed flowers, trees [and / &] shrubs
54. Use [only] around listed flowers, trees [and /&] shrubs
55. Won't wash away
56. Works season long up to 4months
57. XX% more [product] [coverage]
58. Bonus size [XX% more] [product] [coverage]

---

**59. WARRANTY**

---

**IMPORTANT: READ BEFORE USE**

---

Read the entire Directions for Use, Conditions, Disclaimer of Warranties and Limitations of Liability before using this product. If terms are not acceptable, return the unopened product container at once.

By using this product, user or buyer accepts the following Conditions, Disclaimer of Warranties and Limitations of Liability.

**CONDITIONS:** The directions for use of this product are believed to be adequate and must be followed carefully. However, it is impossible to eliminate all risks associated with the use of this product. Crop injury, ineffectiveness or other unintended consequences may result because of such factors as weather conditions, presence of other materials, or the manner of use or application, all of which are beyond the control of Lebanon Seaboard Corporation [Company Name]. All such risks shall be assumed by the user or buyer.

**DISCLAIMER OF WARRANTIES:** To the extent consistent with applicable law,

LEBANON SEABOARD CORPORATION [COMPANY NAME] MAKES NO OTHER WARRANTIES, EXPRESS OR IMPLIED, OF MERCHANTABILITY OR OF FITNESS FOR A PARTICULAR PURPOSE OR OTHERWISE, THAT EXTEND BEYOND THE STATEMENTS MADE ON THIS LABEL. No agent of Lebanon Seaboard Corporation [Company Name] is authorized to make any warranties beyond those contained herein or to modify the warranties contained herein. To the extent consistent with applicable law, Lebanon Seaboard Corporation [Company Name] DISCLAIMS ANY LIABILITY WHATSOEVER FOR SPECIAL, INCIDENTAL OR CONSEQUENTIAL DAMAGES RESULTING FROM THE USE OR HANDLING OF THIS PRODUCT.

**LIMITATIONS OF LIABILITY:** To the extent consistent with applicable law, THE EXCLUSIVE REMEDY OF THE USER OR BUYER FOR ANY AND ALL LOSSES, INJURIES OR DAMAGES RESULTING FROM THE USE OR HANDLING OF THIS PRODUCT, WHETHER IN CONTRACT, WARRANTY, TORT, NEGLIGENCE, STRICT LIABILITY OR OTHERWISE, SHALL NOT EXCEED THE PURCHASE PRICE PAID, OR AT LEBANON SEABOARD CORPORATION'S [Company's Name] ELECTION, THE REPLACEMENT OF PRODUCT.

- 60. No roots, no weeds\*, no weeding
- 61. Prevents weeds\* from germinating
- 62. Blocks weeds\* for (4)(four) months guaranteed
- 63. Stops weeds\* before they grow
- 64. Prevents weeds\* for (4)(four) months
- 65. [Product name] with weed barrier technology
- 66. [Product name] with weed growth inhibitor
- 67. [Product name] with weed defense technology
- 68. [Product name] with seed block technology
  
- 69. Prevents weeds\* around your flowers, trees and shrubs (for up to) (4)(four) months (guaranteed)

Place holder pictogram (example) of flowers with mulch



70.



71. GREENSMART ENHANCED EFFICIENCY FERTILIZER FOR A GREEN LAWN and Design is a registered trademark of Lebanon Seaboard Corporation.

\*See Use Directions for complete list of treated weeds



72.

73. [Blocks weed seeds (from germinating)](for [3][months]

74. [Stop(s) weeds\* before they start(!)]

75. [Blocks (weed) seed germination]



76.



77.



- 78.
- 79. [Guaranteed][!] (to be used with icon above)
- 80. [[Reapply] every 3 months]
- 81. [3 month(s) [weed\*] prevention [guaranteed] [!]]



- 82.
- 83. [Guaranteed][!] (to be used with icon above)
- 84. [[Reapply] every 4 months]
- 85. [4 month(s) [weed] prevention [guaranteed][!]]



- 86.
- 87. [Guaranteed][!] (to be used with icon above)
- 88. [[Reapply] every 3 months]
- 89. [3 month(s) [weed\*] prevention [guaranteed] [!]]



- 90.
- 91. [[Guaranteed]][!] (to be used with icon above)
- 92. [[Reapply] every 4 months]
- 93. [4 month(s) [weed] prevention [guaranteed] [!]]



- 94.
- 95. [[Blocks][Prevents] weeds\* for 3 months [guaranteed][!]]
- 96. [[Reapply] every 3 months]
- 97. [3 month(s) [weed\*] prevention [guaranteed] [!]]



- 98.
- 99. [[Blocks] [Prevents] weeds [for] [up to] 4 months (guaranteed)(!)]
- 100. [[Reapply] every 4 months]
- 101. [4 month(s) [weed] prevention [guaranteed] [!]]
- 102.
- 103.
- 104.



- 105.
- 106. [3 month prevention [guaranteed][!]]
- 107. [4 month prevention [guaranteed][!]]
- 108. [Apply any [growing] season]
- 109. [Apply throughout the growing season]
- 110. [Apply spring, summer or fall]



111.



- 112.
- 113. [Use around listed flowers, trees and [&] shrubs]
- 114. [Won't harm listed (grasses) (flowers) (trees) (&/and) (shrubs) [!]]
- 115. Check The Coverage Before You Buy!
- 116. Covers & Feeds [900] [xxx] [sq ft] [sq. ft.] [SQ FT] [SQ. FT.] [Sq Ft] [Sq. Ft.]
- 117. All purpose continuous-release plant food.
- 122. Strengthens plants against heat and drought.
- 123. More colorful blooms, fewer weeds all season.
- 124. Visit [www.preen.com](http://www.preen.com) for gardening tips, how-to videos and more weed prevention.

### **Claims regarding Weed Control Properties**

1. 4 Month [16 week] weed\* control
2. Controls new weeds\* for [up to] 4 months [16 weeks]
3. Controls over 40 weed\*s for 4 months [16 weeks] (Note: 40 listed weeds)
4. Dimension® is a registered trademark of Dow AgroSciences LLC.
5. Effective weed\* control – prevents weeds all season long
6. Prevents crabgrass all season
7. Stops [crabgrass] [annual bluegrass] [chickweed] [henbit] (select any listed weed)
8. Stops crabgrass before it starts
9. Stops Crabgrass, Goosegrass, Chickweed, Oxalis And Many Other Broadleaf and Grass Weeds Before They Emerge and Invade the Turf.
10. Weed images [annual bluegrass, chickweed, crabgrass, henbit] (select any listed weed)
11. 4 month weed\* preventer
12. A preemergence herbicide for control of listed broadleaf weeds and annual grasses in:
  - Container grown ornamentals
  - Ground covers/perennials
  - Landscape ornamentals
  - Non-bearing fruit and nut trees\*\*\*
  - Non-bearing Ornamental fruit and nut trees\*\*\*
13. [Stops] [Prevents] [Blocks] crabgrass for 4 months!
14. 4 Month Weed\* [Barrier] [Control]
15. A Work – Saver Product For The Joy Of Weed-Free\* Gardens
16. Can be applied up to 4 weeks later than other crabgrass products
17. Complete crabgrass control
18. Controls tough grasses and weeds\* [for example or i.e. (select any listed weeds)] [even (select any listed weeds)]
19. Creates a barrier against crabgrass
20. Effective Weed\* Control – Prevents weeds during growing season – reduces the need for hand weeding.
21. Reduce [time consuming] hand weeding
22. Eliminates crabgrass
23. Kills [young] crabgrass [up to 4 weeks after germination]
24. Kills young crabgrass [in early stages of growth]
25. Longer application window
26. No More Crabgrass!
27. One application [prevents weeds\*] [controls crabgrass] [for, 4) months]
28. Prevents 40+ [common] weeds\* [from germinating] [for 4 months]
29. Prevents [40] [+] [tough] [common] [lawn] weeds\*
30. Prevents [new] weeds\* for [up to] 4 Months [guaranteed]
31. Prevents [tough] [southern] weeds\* including (select weeds from list) [ and other common weeds\*]
32. Prevents [(select any listed weeds)] and many other weeds\*
33. Prevents [(select any listed weeds)] and other common weeds\*
34. Prevents [both] grasses and broadleaf weeds\* [with one application] [before they get started]
35. Prevents crabgrass and [40][+] common lawn weeds\* [ for up to 4 months]

36. Prevents crabgrass and grassy weeds\*
37. Prevents new weeds\* for [up to] [4months]
38. Prevents the toughest[southern] weeds\*
39. Prevents tough southern weeds like [(select any listed weeds)]
40. Prevents weeds\* [up to] [for] [16weeks] [4months]
41. Prevents Weeds\* in Ornamental beds and around Bulbs, Flowers, Roses, Ground Covers, Ornamental Grasses, Shrubs & Trees
42. Provides [up to] 4 months weed\* control
43. Season long weed\* preventer
44. Shake on Mulch Every 4 Months [with placeholder pictogram Shaker and product]
45. Southern [Garden] Weed Preventer\*
46. Sprinkle around listed flowers, trees, shrubs [every 4 months]
47. Sprinkle once to prevent weeds\* [for ] [up to] [4 months]
48. Stop weeds\* before they start around flowers, trees, shrubs
49. Stop Weeds\* Before They Start[!] [™]
50. Stops [new] Weeds\* for [up to] 4 Months [guaranteed]
51. Stops [new] weeds \* [guaranteed]
52. Stops crabgrass !
53. Stops crabgrass [growth] [and 40 common weeds\*]
54. Stops weeds\* before they start
55. The Flower and Garden Weed Preventer\*
56. This WORK-SAVER product prevents weeds\* in one [easy] application.
57. Use for a beautiful weed free landscape
58. Weed images (select any from list)
59. Weed-fighting formula
60. Won't harm listed (grasses) (flowers) (trees) (&/and) (shrubs)
61. [In addition to crabgrass, kills over 30 broadleaf weeds and grasses and suppresses 8 more!]
62. [Controls CRABGRASS before it emerges and kills over 30 broadleaf weeds and grasses!]
63. [Kills [over 30] [33] broadleaf weeds and grasses and suppresses 8 more!]
64. Preventive weed control treatment – apply before weeds\* germinate
65. Controls [Prevents] crabgrass and over [XX] other grass and broadleaf weeds\* prior to germination
66. Suppresses additional [XX] weeds and grasses as listed
67. Controls crabgrass in early stages of development
68. Prevent crabgrass before it germinates
69. Kills crabgrass up to [4] weeks after germination
70. Prevents crabgrass and destroys it up to 4 weeks after germination
71. Kills seedling crabgrass up to [4] weeks after [it emerges] [emerging]
72. Provides pre and post-emergent control of crabgrass and control or suppression of over [XX] additional weeds as listed, when applied prior to their germination
73. Product must be applied as a preventative treatment, prior to weed germination. Only crabgrass will be controlled with applications made up to 4 weeks after germination
74. Can be applied up to 4-weeks after most other crabgrass preventers!
75. Effective in killing crabgrass up to 4-weeks after seedlings emerge

- 76. Will control or suppress up to [XX] other listed grass and broadleaf weeds as listed
- 77. Controls or suppresses up to [XX] other listed grass and broadleaf weeds, when applied prior to germination
- 78. 4 [Four] additional weeks for effective application means extra time for homeowners!
- 79. Controls or suppresses up to [xx] common weeds\* when applied as a pre-emergent.

\*See Use Directions for complete list of treated weeds.

\*\* See Use Directions for complete list of acceptable ornamentals.

\*\*\* Do not use on food producing trees and ornamentals.

### **Claims regarding Combination Weed Control and Fertilizer**

1. Kills Weeds\* While Feeding Your Lawn.
2. Prevents weeds\* [and fertilizes the lawn]
3. Prevents weeds\* and feeds your lawn [turf] [for 4 months] [for up to 4 months] [for 16 weeks] [for up to 16 weeks]
4. Stops weeds\* and feeds your lawn [turf] [for 4 months] [for up to 4 months] [for 16 weeks] [for up to 16 weeks]
5. [2 in 1] [Southern] Weed\* Preventer Plus Plant Food
6. [Control] [prevents] crabgrass & fertilizes
7. 4 Month Weed\* [Control] [Preventer] with Plant Food
8. Blocks Crabgrass & Feeds [for 3 months]
9. Complete Crabgrass Control with fertilizer
10. Lawn Nutrients and Weed\* Control in one convenient formula!
11. More Blooms, Fewer Weeds\* [for 4 months]
12. One application prevents weeds\* and fertilizes
13. Prevents weeds\* and feeds plants
14. Prevents crabgrass - thickens lawns
15. Prevents crabgrass and feeds 4 months
16. Prevents Weeds\* & Fertilizes in Ornamental beds and around Bulbs, Flowers, Roses, Ground Covers, Ornamental Grasses, Shrubs & Trees as listed.
17. Prevents weeds\* and feeds for 4 months
18. Prevents weeds\* and feeds plants
19. Prevents weeds\* and feeds plants up to 4 months
20. Prevents weeds\* up to 4 months and feeds plants
21. Season-long weed preventer\* and fertilizer
22. Stops crabgrass growth - Builds thicker, greener lawns
23. Stops Weeds\* and feeds plants!
24. Stops Weeds\*, Feeds Plants [for Southern Gardens]
25. The Flower and Garden Weed Preventer Plus Fertilizer [Plant Food]
26. This WORK-SAVER product prevents weeds\* plus fertilizes in one [easy] application.
27. Total Season Crabgrass Control [plus fertilizer]
28. Pre- and post-emergent control of crabgrass [plus fertilizer]
29. Since most pre-emergent crabgrass preventers kill crabgrass only before the seedlings emerge, this gives homeowners a short window of opportunity. Fortunately, [TURF Fertilizer with Dimension® Weed Control or this product] provides 4 additional weeks of

post-emergent control of crabgrass seedlings, providing more flexibility for application. [That 4-week window can make a big difference, giving you added time to create a beautiful lawn.] [But that’s not all. [TURF Fertilizer with Dimension® Weed Control or this product] also controls or suppresses more than 40 grassy and broadleaf weeds – such as knotweed, spurge and goosegrass – if applied as a pre-emergent. All while providing the right fertilizer mix for spring lawns.]

\*See Use Directions for complete list of treated weeds.

**Claims regarding Fertilizer Properties**

1. [TURF Fertilizer Plus Dimension® Weed Control] – All the fertilizer nutrients your lawn [turf] needs for spring
2. [TURF Fertilizer Plus Dimension® Weed Control] – Providing the Nutrients Needed for Beautiful Lawn [and Ornamentals.]
3. Builds strong, deep roots, for a thick, green lawn [turf]
4. Fertilizes to provide rich color [and vigorous growth]
5. Improves soil fertility
6. Larger Roots / Greener Lawn
7. No phosphate [helps protect our waterways] (for use when fertilizer analysis has “0” phosphate).
8. Promotes rapid root growth
9. Promotes root growth for a thicker, greener lawn [turf]
10. Protects & [and] strengthens for a better spring lawn [turf]
11. Provides your soil with nutrients
12. Restores nutrients to your soil
13. Restores nutrients to your soil for a quick spring green up [green-up]
14. Zero phosphate [helps protect our waterways] (for use when fertilizer analysis has “0” phosphate).
15. [feeds] [provides] for quick spring greening of lawn [grass][turf]
16. [Feeds] for a [quick] [early] spring green up of lawn [grass][turf]
17. [for] [Builds] [a] thicker, [stronger,] greener lawn [grass] [turf]
18. [phosphorus] [phosphate] free [Allowed only when “zero” phosphate indicated.]



19.



20. (Symbol for heat/drought resistance)



21. (Symbol for stronger roots)



22. [xx%] readily available nitrogen
23. High Quality Fertilizer – For abundant blooms, increased yields, strong root development and improved plant vigor.
24. Builds [strong] deep roots [to retain water] [to protect from drought and heat] [to endure heat, drought] [ for better heat and drought tolerance]
25. Builds stronger roots [for maximum drought resistance] [for maximum greening of lawn [grass][turf] [for maximum water absorption]
26. Deeper roots better retain water to protect from heat and drought
27. Deeper, stronger roots means less watering needed
28. Feeds [plants] for more blooms!
29. Feeds for [bigger,] more colorful plants
30. Fertilizes [Feeds] your plants
31. Great results, first season of use –guaranteed.
32. Grow a thicker, greener lawn with less water
33. Helps plants retain water to protect against heat and drought
34. Improves water absorption [in turf grasses]
35. Less watering, [drought resistant] due to [stronger] [deeper] roots
36. No burning when used as directed.
37. Promotes [more] [colorful] blooms
38. Replenishes soil nutrients [for a thicker, greener lawn]
39. Restores nutrients [to your soil] for a quick spring green up of lawn [grass][turf]
40. Strengthens plants against heat and drought
41. Strong[er] roots [can] [will] absorb [more] water [better] [with less effort]
42. There’s no chance of overfeeding or burning your plants when used as directed.
43. This product contains a [fertilizer] [plant food] consisting of nitrogen, phosphorus, and potassium to keep your plants growing strong.
44. With Brilliant Blooms [Plant Food]
45. Won’t burn your plants

**Claims regarding Slow Release Fertilizer Properties**

1. [TURF Fertilizer Plus Dimension® Weed Control or This product] feeds and greens with [slow release] fertilizer [for up to [2] [3] months] [for up to [8] [9] [10] [11] (12) weeks]
2. Feeds [greens] [strengthens] [thickens] your lawn for up to ( (2)( 3) months) [[8] [9] [10] [11] (12) weeks]
3. Feeds your lawn [turf] up to (([8] [9] [10] [11] [12] weeks) ( [2] [3] months)
4. Greens up to ((2) (3) months) [8] [9] [10] [11] [12] weeks]
5. MESA® is a registered trademark of Lebanon Seaboard Corporation.
6. Patented, controlled release nitrogen for continuous feeding
7. Quick and continuous greening for up to ((2) (3) months) [8] [9] [10] [11] [12] weeks]
- 8.

XX	XX	XX
Nitrogen (N)	Phosphorous (P)	Potassium (K)
Contains Timed-Release Nitrogen	Improves Root	Improves Plant Hardiness &

for growing a thick green lawn [Stimulates growth and encourages a thick. green lawn]	[Improves root growth and Plant Storage Capacity]	Drought Resistance
---	---	--------------------

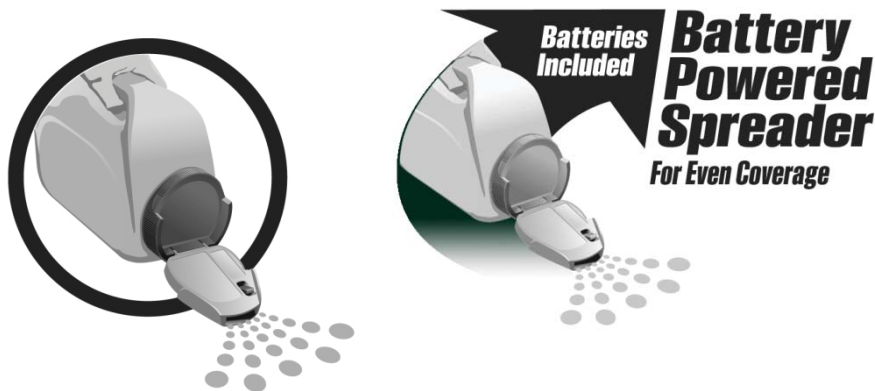


9. (Number symbol as shown in circle – number will range from 1 to 12 weeks/months)
10. [1 to 12] Feeds your lawn up to [X] [weeks] [months].
11. [Controlled] [Slow] Release feeding up to [X] weeks
12. [Controlled] [Slow] Release Plant Food
13. [METH-EX®] [MESA®] Provides slow, continuous feeding for up to ([8] [9] [10] [11] [12] weeks) ([2] [3] months) Initially some nitrogen is released by water to provide early spring green-up of lawn [grass][turf]. As soil temperatures warm, nitrogen is gradually released through microbial action that minimizes surge growth.
14. [with] [Continuous Release] Plant Food
15. [xx%] slowly available nitrogen
16. Change to a more efficient, top-performing fertilizer
17. Continuous feeding [for] [up to] [(X weeks) (X months)]
18. Extended Feeding Plant Food
19. Extended time-release feeding of nitrogen lasts into the summer.
20. Featuring both immediate release and controlled-release nutrients.
21. Featuring MESA® Slow Release Nitrogen
22. Feeds [for] [up to] [X months] [X weeks]!
23. Feeds [lawns] for ([8] [9] [10] [11] [12] weeks) ([2] [3] months) !
24. Feeds [plants] [for] [up to] [X months]!
25. Feeds [your] [the] lawn [for] [up to] [ (2) (3) months] ([8] [9] [10] [11] [12] weeks )
26. Fertilize once for whole growing season.
27. Get spectacular results with an enhanced efficiency fertilizer.
28. METH-EX® is a registered trademark of Lebanon Seaboard Corporation.
29. No flush growth response after application means less clippings.
30. One easy application feeds your plants [for (2) (3) months] (for [8] [9] [10] [11] [12] weeks) to promote beautiful color, blooms, foliage and strong root growth.
31. Slow release nitrogen helps prevent leaching into area water systems when applied as directed.
32. What is Slow Release Nitrogen?
33. with [Controlled] [Slow] Release Plant Food
34. MESA® proprietary slow-release nitrogen builds strong roots to provide controlled, steady nutrition for your lawn
35. MESA® is a proprietary, patented slow-release nitrogen source
36. Contains MESA® controlled release nitrogen
37. New Jersey slow-release nitrogen compliant
38. Slow-release nitrogen content compliant in [state, state, state]

39. Provides the [lawn] [turf] controlled, steady nutrition
40. Consistent greening with no excess growth, and less mowing!
41. Provides lush, green lawn with no excess growth
42. No surge growth
43. Less mowing, because greening is more consistent
44. Meets [list state or states] slow release nitrogen requirements
45. Meets [list state or states] state-wide slow release nitrogen requirements
46. Meets [list state or states] nitrogen requirements
47. Specially formulated for [list state or states] Lawns
48. [list state or states] slow-release nitrogen compliant
49. Slow-release nitrogen compliant in [list state or states]
50. Features [MESA®][MESA logo] nitrogen for fast green-up, extended feeding and fewer grass clippings
51. Features [MESA®] [MESA logo] [Slow Release] Nitrogen for fast green-up, extended feeding and fewer clippings
52. Features [MESA®] [MESA logo][Controlled Release] Nitrogen for faster green-up, continuous feeding and fewer grass clippings

### **Claims regarding POWER Applicator Cap**

1. [1] [2] [AA] [AAA] Batteries [included]
2. Includes [1] [2] [AA] [AAA] Batteries
3. [Dispenses] [Flows] [Spreads] evenly, [less work]
4. Motorized!
5. Easy to use [applicator] [Spreader]
6. [Dispenses] [Flows] [Spreads] [Covers] [evenly,] [less work] [easily] [Dispenses] [Releases] [Applies] [granules] [products] evenly
7. [For] [Provides] [allows for] [even] [precise] [coverage] [application]
8. [Easy] [EZ] [Flow] [Even Flow] [MaxControl] [Battery Powered] [Automatic] [Auto] [Shaker] [Power] [Applicator] [Spreader] [Dispenser]
9. [Reusable] [Built in] (Battery Powered) [Motorized] [Power] [Spreader] [Dispenser] [Dispensing] [Cap] [Spout] [Applicator][Included]
10. Fast [and, &] [Easy] shake-free [dispensing][applicator][dispenser] [spreader] [just hold and go[and/&] follow all label directions]
11. [Just] hold and go! [and/&] follow all label directions
12. [Require] [1] [2] [AA] [AAA] Batteries [(included]
13. [XX]% more [product] [coverage]
14. [Applicator] [Scoop] Included [pictogram placeholder for applicator]
15. Automatic motor shut-off when lid is closed
16. Bonus size [XX]% more [product] [coverage]
17. Bonus size!
18. Bonus size [covers xx sq. ft.)
19. Image of cap with product dispensing



- 20.
21. [[Battery Powered] [Cap] [Spreader] [Applicator] [for even coverage] [batteries included]]
22. [[Easy to use] battery [operated] [powered] [applicator]]
23. Battery Powered [cap] [for even coverage]
24. Special Value [!] [Bonus Value] [!]
25. Easy to Apply – Just shake on
26. [Easy to Apply-] No Shaking!
27. Easy (to) open [resealable] bag
28. EASY TO USE APPLICATOR [Insert image]
29. [For] [Provides] [uniform] [even] [accurate] coverage
30. [Allows for] [Provides] more precise application
31. Follow manufacturer’s directions for battery disposal.
32. For [an] [even] [uniform] even flow [and more precise application]
33. Just Flip Open & Hold [and/&] follow all label directions
34. [Just] flip open and go[and/&] follow all label directions
35. Lift here to open [pictogram of an arrow]
36. (Peel here)
37. No shaking!
38. Press to reseal
39. Ready To Use Granules with Built In [Shaker] Applicator [for rigid plastic containers]
40. Reusable [battery-powered] [power] [applicator] [fits all Preen bottles]
41. Reusable Container
42. Releases [distributes] product evenly [for uniform coverage] [for best results]
43. Saves time
44. Shake on Mulch Every 4 Months [with placeholder pictogram Shaker [applicator] and product]
45. Applies [granules] xx times as fast as shaking!
46. Value Pack [!]
47. Includes [Preen] [Battery Powered] [Spreader] [Dispenser] [Dispensing] [Applicator][Cap] [Spout] and [1] [2] [specify weight] refill bag[s] [pictogram]
48. [Specify weight] Refill [size] [bag]
49. Apply on mulch every [3] [4] months (with pictogram or image of product)
50. Simply press to close

51. Special [bonus] value!
52. When storing container at end of season, remove batteries [to prevent leakage].
53. Dispose of batteries as per manufacture's direction.
54. To replace batteries, open battery door [loosen and remove screws in underside of cap to reveal battery housing]
55. Applicator instructions [Getting Started] [First time use]  
 [Note to reviewer: #56, #57 and #58 are optional directions to replace #55. The bracketed numbers and letters below are optional and bullets can be used.]
- [1.] Unscrew [applicator] cap [pictogram or image]
- [2.] Remove seal from top of bottle [container] [pictogram, icon or image]
- [3.] Remove tab to activate batteries [pictogram, icon or image]
- [4.] Replace [applicator] cap [pictogram, icon or image]
- [5.][Flip (insert color) top up [pictogram, icon or image]
- [6.] [Tilt away from face before turning on]
- [7.] To begin spreading, tilt bottle [container] [toward ground] and turn [flip] [select color] power [button] [switch] to on position. [Pictogram, icon or image]
- [8.] Apply as directed.
- [9.] Simply press to close.  
 [Optional steps 5 and 6 may replace steps 5-7]
- [5.] To begin spreading, open top, turn on power [button] [switch] and tilt bottle.  
 [Pictogram, icon or image]
- [6.] Apply as directed.
56. [Getting Started] [Applicator Instructions] [Spreader Instructions]
- (a) Unscrew [applicator] cap and remove seal from top of bottle; replace cap.
- b) [Flip open top), [and] ( open) [remove]( battery cover and) pull [vinyl] tab to activate batteries.] [We'd like this direction b, e and f to be optional.]
- (c) To begin spreading, [flip open] [top] [and] turn on [color] power switch.
- (d) Tilt bottle [at 45-degree angle] toward ground and [hold steady as you] apply [as directed] [pictogram or image]
- (e)[If motor (gets clogged) [stops][stops working], turn power switch [to] off [position] and manually rotate the [color](dial) [disc] on top of (the) ( cap) [lid] [spout cap] to dislodge (granules) [product]. Turn power back on to resume application.)
- (f)([Simply] Press to close (- motor automatically shuts off when lid is closed].)
57. [Getting Started] [Applicator Instructions] [Spreader Instructions]
- (a) Unscrew cap. Remove seal from top of bottle. Replace cap.
- (b) (Pull tab to activate batteries) direction b is optional here.
- (c) To begin spreading, (flip) open top, turn on power switch, and tilt bottle (toward ground)
- (d) Apply as directed.
- (e) (If motor (gets clogged) [stops][stops working], turn power switch [to] off [position] and manually rotate the [color]( dial) [disc] on top of (the) ( cap) [lid] [spout cap] to dislodge (granules) [product]. Turn power back on to resume application.) [direction E is optional here]
- (f) (Simply) press to close) [direction F is optional here]
58. [Tips for Use] [Getting Started] [Instructions]

- [a.] [Unscrew [applicator] cap] [and] [remove protective seal from] (cap) [top of bottle] [top of container]. [Note to the reviewer this step is optional]
- [b.] [Open battery door and] remove tab to activate batteries [Note to the reviewer this step is optional]
- [c.] Turn power switch on while [bottle] [container] [spreader] is in an upright position, [and] [then] tilt [bottle] [container] [spreader] toward ground [at a 45-degree angle].
- [d.] Adjust the angle of the [bottle] [container] [spreader] to control the flow
- [e.] When finished, turn power off while [bottle] [container] [spreader] is still pointed downward. [Note to the reviewer this step is optional]
- [f.] Hold [bottle] [container] [spreader] steady [and apply as directed] [and apply in an even back and forth motion] [Note to the reviewer this step is optional]
- [g.] If motor (gets clogged) (or) [stops] [ stops working], turn power switch [to]off [position]and manually rotate [the] [color] (dial) [disc] on top of(the)[cap] (lid) [spout cap] [counterclockwise] [clockwise] [in direction of arrow] to dislodge( granules) [product] . [Turn power back on to resume application.] [Note to the reviewer this step is optional]
- [h.] Pictogram of proper use of spreader [Note to the reviewer this step and pictogram are optional]

- 59. Up to [X minutes] of continuous spreading
- 60. For maximum control
- 61. For [greater] [more accurate] coverage [accuracy]
- 62. Battery [shelf] life [up to X hours] [up to X years]
- 63. Battery lasts x hours
- 64. Visit [www.preen.com] [www.greenviewfertilizer.com] [for gardening] [for lawn] [and weed prevention] tips, [and] [valuable offers] [and more information on] [Preen products.][GreenView Product] [Insert brand].
- 65. Instant Savings!
- 66. [\$1.50] [\$2.00] [\$2.50] [\$3.00] [\$4.00] [\$5.00] off [regular price] [visit www.Preen.com] [www.greenviewfertilizer.com] for details] [see store associate for details].
- 67. [\$1.50] [\$2.00] [\$2.50] [\$3.00] [\$4.00] [\$5.00] off a future [Preen] [.] [GreenView] [Insert brand] purchase [of select brand Products.] [Visit [www.Preen.com](http://www.Preen.com)] [Visit [www.greenviewfertilizer.com](http://www.greenviewfertilizer.com)] [for details.] [see store associate for details].
- 68. [\$1.50] [\$2.00] [\$2.50] [\$3.00] [\$4.00] [\$5.00] rebate [Visit [www.Preen.com](http://www.Preen.com)] [Visit [www.greenviewfertilizer.com](http://www.greenviewfertilizer.com)] [for details.] [see store associate for details].
- 69. [\$1 - \$10] Rebate (-) [Visit [www.Preen.com](http://www.Preen.com)] [Visit [www.Preen.com](http://www.Preen.com)] [Visit [www.Preen.com](http://www.Preen.com)] [Visit [www.greenviewfertilizer.com](http://www.greenviewfertilizer.com)]for offer details [, & complete terms & conditions.] [Expires [place holder for DATE].] [Limit 1 request per household.] [Void where prohibited.]

**OPTIONAL MARKETING CLAIMS FOR Ready2Go Spreader:**

1. Ready2Go Spreader™ logo

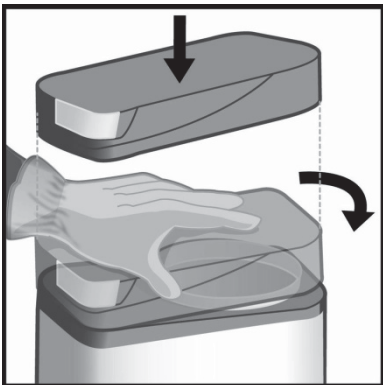
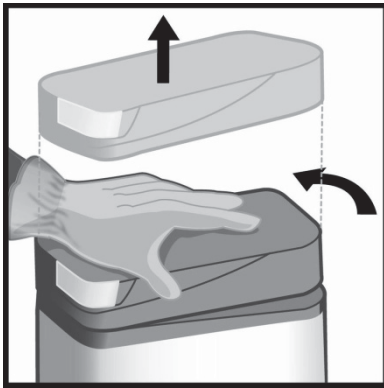


2. Ready2Go SPREADER™
3. Ready2Go SPREADER and design is a trademark of Lebanon Seaboard Corporation.
4. Ready2Go SPREADER is a trademark of Lebanon Seaboard Corporation.
5. Ready2Go SPREADER is a registered trademark of Lebanon Seaboard Corporation.
6. [www.Ready2GoSpreader.com](http://www.Ready2GoSpreader.com)
7. For more information on [Ready2Go Spreader™ products][this product][additional Ready2Go Spreader™ products], visit  
[[www.preen.com](http://www.preen.com)][[www.greenviewfertilizer.com](http://www.greenviewfertilizer.com)][[www.Ready2GoSpreader.com](http://www.Ready2GoSpreader.com)]

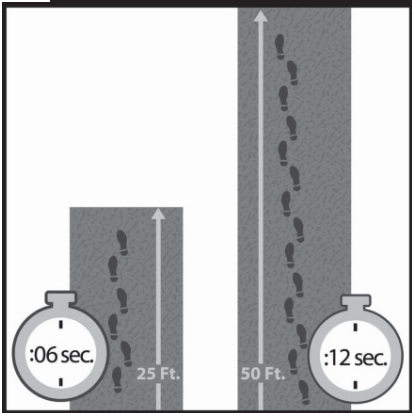
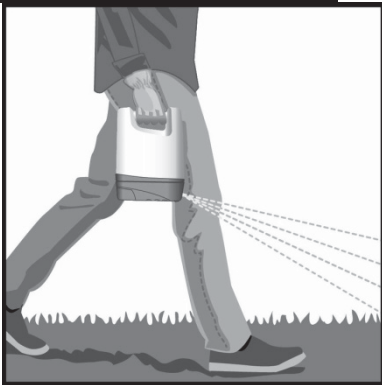
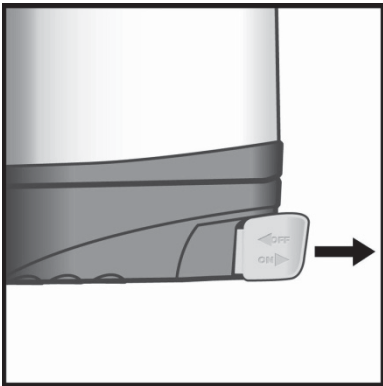
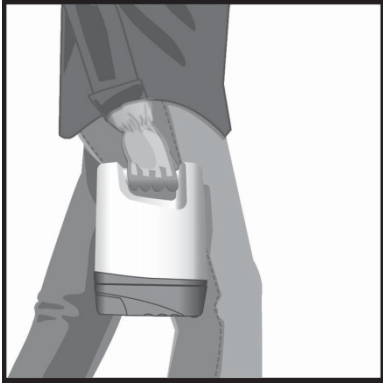


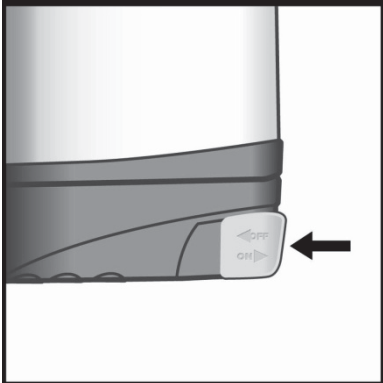
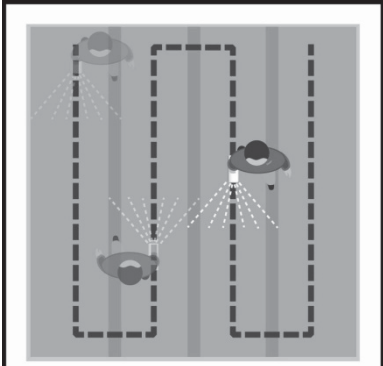
- 8.
9. Ready2Go SPREADER™ REFILL
10. Optional pictograms of Ready 2 Go Spreader™ that may or may not appear on the product label.

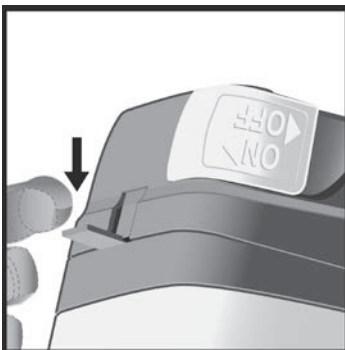


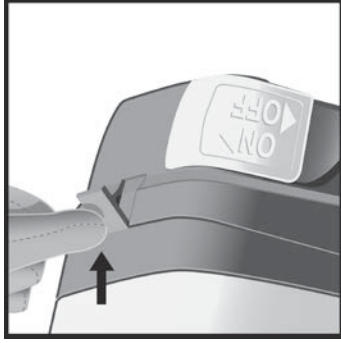












11. Ideal for [smaller] [Urban] [any sized] [any size] lawn[s]
12. Great for spot treatment of [larger] [any sized] [any size] lawn[s]
13. Ideal for treatment on uneven terrain
14. Ideal for application on more difficult terrain such as hilly or uneven areas where a traditional spreader is hard to push
15. Ideal for application on difficult terrain
16. Provides exceptional maneuverability.
17. Easy to maneuver for application around landscape items
18. Battery-powered spreader container is refillable.
19. Battery Powered with Refillable Container
20. Container is refillable.
21. Refillable container
22. Fertilizer product and spreader, all in one!
23. Crabgrass [control] [preventer] and spreader, all in one.
24. Crabgrass [control] [preventer], fertilizer and spreader, all in one.
25. Container with integrated [battery-powered] spreader [unit] [device] [applicator]
26. The Ready2Go Spreader™ way
27. It's ready to go.
28. Easy to Use [!]
29. Easy set up.
30. Easy to store.
31. Pre-calibrated.
32. No settings required.
33. Calibrated, No Settings [!]
34. Easy to carry.
35. Easy to store.
36. Easy to carry and store.
37. Easy to hold.
38. Hold easily at side.
39. No pushing, no fatigue.
40. Easy to change directions when applying.

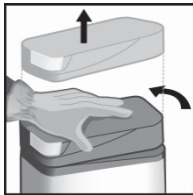
- 41. Apply walking forward, or backward.
- 42. You can easily avoid walking through areas where product is applied.
- 43. More flexibility and maneuverability when applying.
- 44. Hand held spreader.
- 45. For treating:
  - difficult terrain
  - spot treatment areas
- 46. Battery-powered
- 47. Weighs only [xx] lbs. when container is full.
- 48. R2G
- 49. Exceptional value – crabgrass [preventer] [control], [fertilizer] and spreader in one
- 50. Ready2Go Spreader™ Directions: [Getting started] [ (First time use) ]

- [1]PLACE the Ready2Go Spreader™ UPSIDE DOWN on a flat surface (the [GREEN] [any color] BASE facing up).



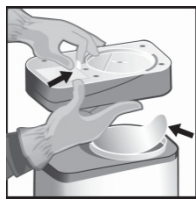
[Optional Pictogram or image]

- [2]HOLD the container steady and TURN the base COUNTER-CLOCKWISE [(to left)] [approximately quarter turn] until it STOPS and LIFT to remove.



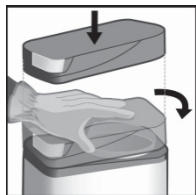
[Optional Pictogram or image]

- [3]REMOVE the protective seal from the round opening, and [in one smooth movement] PULL the tab from the battery compartment.



[Optional Pictogram or image]

- [4]REALIGN the protruding tabs on the base with the slots on the container and TURN CLOCKWISE [(to right)] until the base LOCKS back in its original position.



[Optional Pictogram or image]

- [5] FLIP the Ready2Go Spreader™ back to the UPRIGHT position. The Ready2Go Spreader™ is now ready to use.



[Optional Pictogram or image]

51. Ready2Go Spreader™ Directions: [Getting started] [ (First time use) ]

- [1] REMOVE the sticker from the [latch area][side] of the Ready2Go Spreader™.



[Optional Pictogram or image]

- [2] PLACE the Ready2Go Spreader™ UPSIDE DOWN on a flat surface (the [GREEN] [any color] BASE facing up).



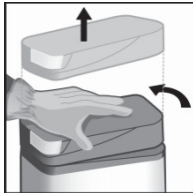
[Optional Pictogram or image]

- [3] HOLD the container steady and flip the latch to open.



[Optional Pictogram or image]

- [4] TURN the base [COUNTER-CLOCKWISE] [(to left)] [approximately quarter turn] until it STOPS and LIFT to remove.



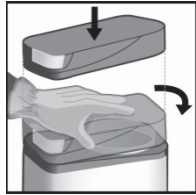
[Optional Pictogram or image]

- [5] REMOVE the protective seal from the round opening, and [in one smooth movement] PULL the tab from the battery compartment.



[Optional Pictogram or image]

- [6] REALIGN the protruding tabs on the base with the slots on the container and TURN [CLOCKWISE] [(to right)] until the base LOCKS back in its original position.



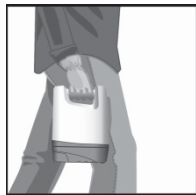
[Optional Pictogram or image]

- [7] SECURELY close the latch.



[Optional Pictogram or image]

- [8] FLIP the Ready2Go Spreader™ back to the UPRIGHT position. The Ready2Go Spreader™ is now ready to use.



[Optional Pictogram or image]

## 52. First time use

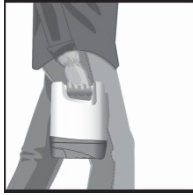
- [1] Place unit upside down on a flat surface [as shown].
- [2] Turn the [green] [any color] [R2G] spreader base counterclockwise a quarter turn and lift to remove.
- [3] Remove the protective seal on the container.
- [4] Remove the battery compartment pull tab to [activate] [power the unit].
- [5] [While still in an inverted position], realign the spreader base, with the container. Twist clockwise to lock into position.
- [6] Flip it to the upright position and you are ready to begin applying product.

53. First time use

- [1] Remove the sticker from the [latch area][side] of the Ready2Go Spreader™
- [2] Place unit upside down on a flat surface [as shown].
- [3] Holding the container steady, flip the latch to open.
- [4] Turn the [green] [any color] [R2G] spreader base [counterclockwise] a quarter turn and lift to remove.
- [5] Remove the protective seal on the container.
- [6] Remove the battery compartment pull tab to [activate] [power the unit].
- [7] While still in an inverted position, realign the spreader base, with the container. Twist [clockwise] to lock into position.
- [8] Securely close the latch.
- [9] Flip it to the upright position and you are ready to begin applying product.

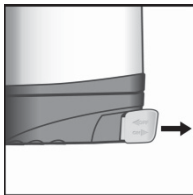
54. Directions for applying the product [or product name] to your lawn:

- [1] Move to the lawn area to be treated.



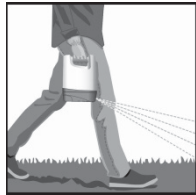
[Optional Pictograms or images]

- POSITION the Ready2Go Spreader™ comfortably [at] [by] your side (arm fully extended), over the target area, and TURN ON by pulling back the on/off slide switch.



[Optional Pictograms or images]

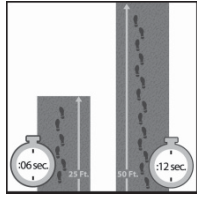
- [2] When product begins spreading, WALK over the application area at a NORMAL WALKING PACE



[Optional Pictogram or image]

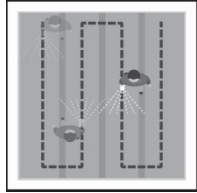
- (6 seconds for a 25' strip, or 12 seconds for a 50' strip).





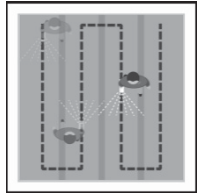
[Optional Pictogram or image]

- CONTINUE to within [2'] [two feet] of the end of the application area, and begin a new row by taking [2] [TWO] STEPS TO THE RIGHT OR LEFT, and walk back parallel to your first row. There should be a SLIGHT OVERLAP to the spread radius.



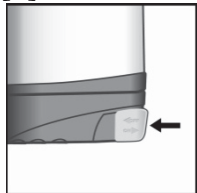
[Optional Pictogram or image]

-CONTINUE in this manner until you have finished applying the product.



[Optional Pictogram or image]

- [3] TURN OFF the Ready2Go Spreader™ by PUSHING IN the slide switch.



[Optional Pictogram or image]

If product remains, store in a cool, dry place. If empty and lawn application is finished, simply refill the container.

55. Applying product with the Ready2Go Spreader™ applicator:

56. To Apply:

- Be sure you are on the lawn area to be treated.
- Hold the spreader comfortably at your side with arm fully extended downward.
- Pull the [yellow] [any color] slide switch at the side-back of the spreader/container ON and begin walking to apply.
- Apply according to the application instructions (pace) and pattern diagram (pattern) for best results.
- When product is depleted, push the [yellow] [any color] slide switch IN to turn the spreader OFF.

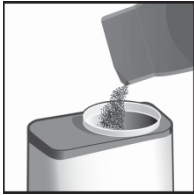
- If product remains, store in a cool, dry place. If empty and lawn application is finished, simply refill the container.

57. Target pace

58. Desired pattern

**59. Refilling your Ready2Go Spreader™: [To refill your [R2G][Ready2Go] spreader™ container:]**

- [1]PLACE the Ready2Go Spreader™ UPSIDE DOWN on a flat surface [the [GREEN] [any color] BASE facing up].
- [2]HOLD the container steady while TURNING the base COUNTER-CLOCKWISE until it STOPS and LIFT to remove.
- [3]CUT a corner opening on the [TURF Fertilizer Plus Dimension® Weed Control or product name] refill bag, and pour into the Ready2Go Spreader™ until the container is FULL.

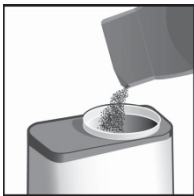


[Optional Pictogram or image]

- [4]Replace the spreader unit base. [Align tabs and slots and twist clockwise into place]
- [5]FLIP the Ready2Go Spreader™ to the UPRIGHT position. The Ready2Go Spreader™ is now ready to operate. Follow application instructions.

**60. Refilling your Ready2Go Spreader™: [To refill your Ready2Go Spreader Container:]**

- [1]PLACE the Ready2Go Spreader™ UPSIDE DOWN on a flat surface [the [GREEN] [any color] BASE facing up].
- [2] HOLD the container steady and flip the latch to open.
- [3] TURN the base [COUNTER-CLOCKWISE] until it STOPS and LIFT to remove.
- [4]CUT a corner opening on the [TURF Fertilizer Plus Dimension® Weed Control or product name] [refill][ bag], and pour into the Ready2Go Spreader™ until the container is FULL.



[Optional Pictogram or image]

- [5]Replace the spreader unit base. [Align tabs and slots and twist [clockwise] into place]
- [6]Securely close the latch.

- [7]FLIP the Ready2Go Spreader™ to the UPRIGHT position. The Ready2Go Spreader™ is now ready to operate. Follow application instructions.
  -
61. To refill your Ready2Go Spreader™ container, while in the off position, flip the unit and place it on a flat surface.
    - [1]Holding the container steady, grip the [green] [any color] base and twist it a quarter turn counterclockwise until it stops. Simply lift to remove.
    - [2]Open the refill bag, and pour contents into the container base until full.
    - [3]Replace the spreader unit base. [Align tabs and slots and twist clockwise into place]
    - [4]Return the container to an upright position and you are ready to go! Follow application instructions.
  62. To refill your Ready2Go Spreader™ container, while in the off position, flip the unit and place it on a flat surface.
    - [1]Holding the container steady, flip the latch and grip the [green] [any color] base and twist it a quarter turn [counterclockwise] until it stops. Simply lift to remove.
    - [2]Open the [refill] bag, and pour contents into the container base until full.
    - [3]Replace the spreader unit base. [Align tabs and slots and twist [clockwise] into place]. Secure the latch.
    - [4]Return the container to an upright position and you are ready to go! Follow application instructions.
  63. To replace batteries:
    - Access the battery compartment on the inside of the spreader base.
    - Battery compartment door opens by pinching tab and lifting to open.
  64. Requires [1] [2] [3] [4] [AA] [AAA] [C] [D] batteries (included).
  65. Batteries are [disengaged] [inactivated] for shipment. [Simply pull [protection] [protective] tab from battery compartment to engage battery power.]
  66. Use [Battery type] batteries.
  67. Rechargeable batteries may be used.
  68. Batteries included, but disabled for shipment. Pull tab from battery compartment to activate.
  69. Pull tab to activate batteries.
  70. Do not mix old and new batteries.
  71. Do not mix alkaline, standard (carbon-zinc), or rechargeable [(ni-cad, ni-mh, etc)] batteries.
  72. Save time, easy to apply
  73. Save time.



74.



\*As compared to traditional fertilizer spreader setup and application

75.

76. Product goes on evenly.

77. No spreader maintenance [just change batteries]

78. Battery life typically [insert number] applications.

79. No settings.

80. No guesswork.

81. Minimum set up – Just flip the switch and go!

82. No worries.

83. Easy to maneuver to avoid trees, shrubs and gardens during application.

84. Take pride in your lawn, pride in your neighborhood.

85. Make caring for your lawn, easy and fun!

86. Lawn not level, low spots and puddles?

87. More even distribution of fertilizer on uneven terrain.

88. Ideal for spot treatments or fertilizing difficult terrains

89. Goes on evenly.

90. Spreads evenly.

91. Don't be afraid to do it yourself and save. Ready2Go Spreader™ makes it easy.

92. Storage convenience.

93. Easy to store on shelf.

94. A weed\*-free lawn is a heartier lawn. \*See Use Directions for complete list of treated weeds. [This statement will appear in close proximity to the "\*" and appear once per page when used ]

95. Integrated battery powered spreader

96. Keep your lawn looking the best it can

97. Treat ugly spots and lawn patches easily

98. Feed your [lawn] [grass]
99. Keep your lawn uniformly green and hearty
100. Encourage lawn growth and ward off bald and dead grass patches
101. The easy way to a beautiful [yard][lawn]
102. [Beat] [Knock] back weeds\* and feed your lawn in one simple step
103. Is your lawn sparse in certain areas?
104. Treat sparse lawn spots
105. We make it easy for everyone to find the time to feed the lawn with the Ready2Go Spreader™
106. A beautiful lawn can be an asset
107. Spreader setting is fixed [No settings required]
108. Precalibrated, no settings – get it right every time
109. Change directions easily
110. YOU are in control
111. A real time saver
112. Easy to refill and store
113. Applies the right amount of fertilizer, no worries about lawn damage
114. Remove guesswork. Settings are pre-calibrated.
115. Applies fertilizer evenly.
116. Don't worry if you're doing it right. [Ready2Go Spreader™ is just that – Ready to go!]
117. No more worries about getting it right. No more guesswork. Just flip the switch and go!  
Follow all label directions.
118. Treat the whole lawn.
119. Spot treatment and added maneuverability have revolutionized the way we spread fertilizer.
120. Revolutionary way to spread fertilizer.
121. Treat the whole lawn, or just your trouble spots.
122. No spreader to push and pull.
123. No maintenance, no clogging.
124. Makes fertilizing uneven or hilly lawn terrain a breeze.
125. Fertilizing is a breeze.
126. Spreading fertilizer is a breeze.
127. Flip container
128. Twist [Right] [Left] Base
129. Lift Base
130. Set Container Upright
131. Pull [On] [Off] [Slider] [Lever] [Button] [Slide Switch] [On] [Off]
132. Push [On][Off] [Slider] [Lever] [Button] [Slide Switch] [On] [Off]
133. Set on Flat, Stable Surface
134. Fill Container

- 135. Refill Container
- 136. Refillable container – use again and again
- 137. Pour Refill Contents Into Container
- 138. Push [Slider] [Lever] [Button] [Slide Switch] In to Stop
- 139. Return to upright position
- 140. Relax and Extend Arm
- 141. Hold [Grip] [Handle]
- 142. Reusable applicator base
- 143. Includes [1] [2] [3] [4] [AA] [AAA] [C] [D] batteries
- 144. Dispenses evenly for better results
- 145. Lift here to open.
- 146. Press to reseal
- 147. Remove prior to first use



- 148.
- 149. See inside booklet for complete directions for use.
- 150. Overlap [Rows] [Slightly] [6][any number] ["] [inches]
- 151. [:xx] [sec] [ seconds]
- 152. R2G
- 153. Visit [www.preen.com] [www.greenviewfertilizer.com] [for gardening] [for lawn] [and weed prevention] tips, [and] [valuable offers] [and more information on] [Preen products] [GreenView products] [insert brand].
- 154. [\$1.50] [\$2.00] [\$2.50] [\$3.00] [\$4.00] [\$5.00] off [regular price] [visit www.Preen.com] [www.greenviewfertilizer.com[for details] [see store associate for details].
- 155. [\$1.50] [\$2.00] [\$2.50] [\$3.00] [\$4.00] [\$5.00] off a future [Preen] [GreenView] [insert brand] purchase [of select [brand] products.] [Visit www.preen.com] [Visit www.greenviewfertilizer.com] [for details] [see store associate for details].
- 156. [\$1.50] [\$2.00] [\$2.50] [\$3.00] [\$4.00] [\$5.00] rebate [visit www.preen.com] [visit www.greenviewfertilizer.com] [for details] [see store associate for details].
- 157. [\$1 - \$10] Rebate (-) [Visit www.preen.com] [Visit Preen.com] [Visit www.greenviewfertilizer.com] for offer details [, & complete terms & conditions.] [Expires [place holder for DATE].] [Limit 1 request per household.] [Void where prohibited.]
- 158. See Directions for First Time Use
- 159. Combo Pack
- 160. Combo Pack – [product name] Ready2Go Spreader™ and [product name] Refill Bag

161. Value Pack
162. Value Pack – [product name] Ready2Go Spreader™ and [product name] Refill Bag
163. Great Value – [Combo] [Combination] [Pak] [Pack]
164. COMBO PACK: Contains [1] Spreader Container and [1] Refill Bag
165. Total Combined Lawn Coverage: 5,000 Sq. Ft.
166. Combo Pack: Contains (1) Ready2Go Spreader™ [Container] with product, and (1) Ready2Go Spreader™ Refill Bag
167. Combo Pack: Contains: (1) Ready2Go Spreader™ [Container] with [product name] (2,500 Sq. Ft. Coverage) and (1) Ready2Go Spreader™ Refill Bag with [product name] (2,500 Sq. Ft. Coverage)
168. Combo Pack: (2) Ready2Go Spreaders containing [product name] [a] [-] total coverage of 5,000 Sq. Ft

### Claims regarding GreenSmart Fertilizer Properties

1. GreenSmart Enhanced Efficiency Fertilizer for a Green Lawn
2. [contains] [with] GreenSmart<sup>◇</sup>
3. GreenSmart<sup>◇</sup>
4. GreenSmart (logos)









5. GreenSmart and design is a trademark of Lebanon Seaboard Corporation
6. [GreenSmart] [GREENSMART] is a registered trademark of Lebanon Seaboard Corporation.
7. 20% less nutrients required for the same great lawn [turf] results [with GreenSmart Enhanced Efficiency Fertilizer]
8. Enables lawns [turf] to use nutrients more efficiently
9. Enhanced Efficiency Fertilizer
10. Enhances nutrient absorption
11. Enriches soil to promote a vibrant, hardy lawn [turf]
12. GreenSmart<sup>◇</sup> enhances poor soil, creating an environment in which lawns [turf] can thrive. GreenSmart<sup>◇</sup> produces thick, green lawns [turf].
13. GreenSmart<sup>◇</sup> nourished lawns [turf] are more robust because their root systems are larger, deeper and better developed. Vigorous roots mean[s] the lawn [turf] is hardier and better able to tolerate the stress that comes with heat and drought.
14. GreenSmart<sup>◇</sup> produces thick, green lawns [turf]
15. Helps lawns [turf] retain water to protect against heat & [and] drought
16. Helps unlock nutrients already in the soil
17. Improved Nitrogen Efficiency - Reduces Leaching
18. [GreenSmart Enhanced Efficiency Fertilizer - ] Improved nutrient release and absorption into the lawn [turf] allows 20% less nutrients to be applied while still providing [a] quality lawn [turf]
19. Improves drought resistance
20. Improves lawn's [turf's] ability to absorb water & [and] nutrients
21. Increase nutrient up-take in grass [lawns] [turf] 20% [with GreenSmart Enhanced Efficiency Fertilizer]

22. Lawn[s] [turf] [and plants] nourished with [company name's] GreenSmart<sup>◇</sup> are [is] able to tolerate the stress from heat and drought. GreenSmart<sup>◇</sup> produces large, deep, and well developed root systems that can retain water. This enables lawns [turf] [and plants] to withstand stressful conditions.
23. Less watering needed
24. Less watering needed, drought resistant [lawn] [turf]
25. Makes it easier for lawns [turf] to absorb soil nutrients
26. N-P-K with GreenSmart<sup>◇</sup> [Enhanced Efficiency Fertilizer for a Green Lawn]
27. Plants [lawns] [turf] use[s] nitrogen more efficiently so you need less
28. Poor soil may have fewer of the nutrients needed to promote a vigorous lawn [turf]. GreenSmart<sup>◇</sup> works by enriching your soil with nutrients. GreenSmart<sup>◇</sup> revitalizes the soil, which aids in the development of a larger, deeper and better root system. The enhanced habitat is proven to produce a green, thick, vigorous lawn [turf], and reduces the need for watering.
29. Promotes rapid root growth [for a thick green] [lawn] [turf]
30. Recharges your soil with nutrients!
31. Reduces plant [lawn] [turf] stress related to drought
32. Reduces stress on lawns [turf], protects from drought & heat
33. Speeds root growth to improve nutrient absorption
34. Unlocks the nutrients in soil, enhancing nutrient absorption, so you can grow a thicker, greener lawn [turf] with less water.
35. Unlocks the nutrients in your soil
36. Made with GreenSmart<sup>◇</sup>.
37. Because your grass is better able to absorb and use the nutrients and moisture provided by the surrounding soil, less fertilizer ingredients are needed.
38. Better lawn nutrition [means] [results in] stronger, heartier grass.
39. Boosted root development helps retain water to protect against heat and drought, so less watering is needed.
40. Enriches soil, nourishing [lawn][plants] to become stronger and more able to withstand stresses like drought — so you can water less.
41. Fertilizers with GreenSmart<sup>◇</sup> represent a new class of lawn-care treatment options.
42. For the results you want – for the neighborhood you can be proud of.
43. Good nutrition is an essential part of being personally fit, and a big part of a quality lawn too.
44. GreenSmart<sup>◇</sup> – Proven performance.
45. GreenSmart<sup>◇</sup> [provides] [adds] nutrients where they are needed most, stimulating root growth and improving the efficiency of the lawn's natural root system.
46. GreenSmart<sup>◇</sup> enhances soil habitat to improve nutrient absorption. Better plant nutrition means stronger, heartier plants.
47. GreenSmart<sup>◇</sup> helps build strong plants that need less watering because stronger, flourishing lawns are more able to withstand heat and drought.
48. GreenSmart<sup>◇</sup> helps reduce lawn stress due to heat and drought.
49. GreenSmart<sup>◇</sup> helps revitalize soil, making more [conventionally] [commonly] [normally] occurring nutrients available.
50. GreenSmart<sup>◇</sup> introduces nutrients that promote stress-resistance in [plants ] [lawns]
51. GreenSmart<sup>◇</sup> is an exclusive, nutrient-rich formula that promotes plant quality

52. GreenSmart<sup>◇</sup> is rich in essential nutrients [plants] [lawns] need.
53. GreenSmart<sup>◇</sup> is rich in essential soil nutrients plants need for optimal plant quality.
54. GreenSmart<sup>◇</sup> promotes a lawn that's heartier and better able to sustain itself.
55. GreenSmart<sup>◇</sup> promotes better water retention to protect against heat and drought
56. GreenSmart<sup>◇</sup> provides lawns [turf] with nutritional support to help promote and maintain overall plant vigor resulting in a beautiful, green lawn.
57. GreenSmart<sup>◇</sup> provides nutritive benefits to the [lawn] [plants] [turf] to enhance nutrient reception.
58. GreenSmart<sup>◇</sup>. Look for it in quality lawn and garden products.
59. GreenSmart's<sup>◇</sup> nutrients stimulate soil habitat efficiency and promote development of deeper roots for a lawn that needs less watering, and produces grass that's hearty and drought resistant.
60. Improves water conservation by building strong roots and more stress-tolerant plants
61. More efficient nutrient delivery, providing similar results with less nitrogen than traditional fertilizers
62. More efficient nutrient delivery; requires less nitrogen inputs.
63. Now with [GreenSmart logo]
64. Provides similar greening results with 20% less nitrogen than traditional fertilizers.
65. Reduces need for watering by increasing tolerance to drought and heat.
66. Revitalizes soil habitat to grow stronger, heartier plants.
67. Take pride in your lush, green lawn – and pride in your neighborhood
68. When it comes to growing a green lawn, GreenSmart<sup>◇</sup> is downright brilliant!
69. [www.greensmart.com](http://www.greensmart.com)
70. You can feel good about the beautiful, green lawn results — and the positive impact on your neighborhood.

[This statement will appear in close proximity to the “◇” and appear once per page when used.]<sup>◇</sup> Enhanced Efficiency Fertilizer

**(Killing vs. Prevention)**

1. [Killing weeds vs. weed prevention]
2. [Killing weeds vs. preventing weeds]

**(Killing) (Weeds)**

1. Requires pulling or spraying and eliminates weeds already above ground
2. Killing eliminates weeds already above ground
3. Pulling or spraying eliminates weeds already above ground
4. To kill the weed you must remove plant, roots and all.
5. To eliminate (the) (each) weed you must remove roots and all
6. (Ongoing) (Constant) weed growth requires continuous weeding by hand
7. (Ongoing) (Constant) weed growth requires [regular] [continuous] weeding by hand
8. Continual weed growth requires [regular] weeding by hand
9. Steady weed growth requires [regular] [continuous] weeding by hand
10. Consistent weed growth requires [regular] [continuous] weeding by hand
11. Persistent weed growth requires [regular] [continuous] weeding by hand

12. (Ongoing) (Constant) weed growth requires continuous weeding by hand (or) [and] use of (chemicals)(weed killer sprays)
  13. Seasonal weed growth requires continuous weeding by hand
  14. Seasonal weed growth requires [regular] [continuous] weeding by hand
  15. Seasonal weed growth requires continuous weeding by hand (or) [and] use of (chemicals)(weed killer sprays)
  16. (Ongoing) (Constant) seasonal weed growth requires continuous weeding by hand
  17. (Ongoing) (Constant) seasonal weed growth requires [regular] [continuous] weeding by hand
  18. Fast growing seasonal weeds require [regular] [continuous] weeding by hand
  19. (Ongoing) (Constant) seasonal weed growth requires continuous weeding by hand (or) [and] use of (chemicals)(weed killer sprays)
  20. To eliminate (the) (each) weed you must remove (the) plant, roots and all.
  21. To eliminate (the) (each) weed you must remove roots and all
  22. To eliminate (the) (each) weed you must remove (its) roots
  23. To kill (the) (each) weed you must remove (the) plant, roots and all.
  24. To kill (the) (each) weed you must remove roots and all
  25. To kill (the) (each) weed you must remove(its) roots
  26.
    - Weed(s)
    - Weed Roots
    - Broken stem
    - Soil
    - (constantly growing) Weed seeds)
  27. [Pulling or spraying only eliminates weeds already above ground]
- (3D Imagery Optional) (2D imagery Optional)



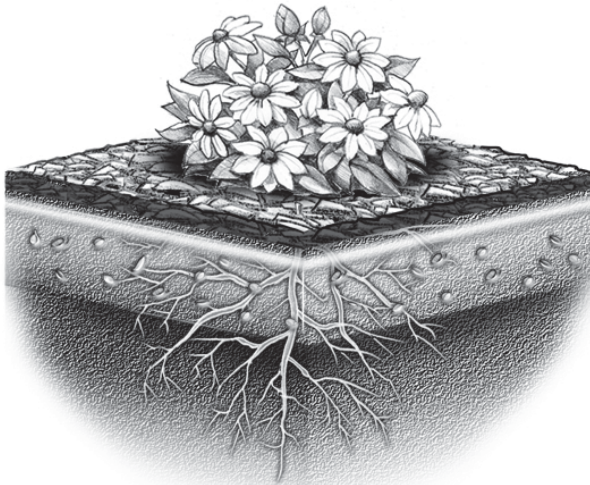
## **(Preventing) (Weeds)**

1. Preventing creates a (weed) barrier that (keeps)(prevents) ( stops) weeds\* from germinating
2. Preventing creates a (weed) barrier that (keeps)(prevents) ( stops) weed\* seeds from germinating
3. Preventing creates a ( weed) barrier that (keeps)(prevents) ( stops) weeds\* when they are seeds
4. Preventing creates a protective barrier that (keeps)(prevents) ( stops) weeds\* from germinating
5. Preventing creates a protective barrier that (keeps)(prevents) ( stops) weed\* seeds from germinating
6. Preventing creates a protective barrier that (keeps)(prevents) ( stops) weeds\* when they are seeds
7. (Product name) creates a (weed) barrier that (keeps)(prevents) ( stops) weeds\* from germinating
8. (Product name) creates a (weed) barrier that (keeps)(prevents) ( stops) weed\* seeds from germinating
9. (Product name) creates a (weed) barrier that (keeps)(prevents) ( stops) weeds\* when they are seeds
10. (Product name) creates a protective barrier that (keeps)(prevents) ( stops) weeds\* from germinating
11. (Product name) creates a protective barrier that (keeps)(prevents) ( stops) weed\*seeds from germinating
12. (Product name) creates a protective barrier that (keeps)(prevents) ( stops) weeds\* when they are seeds
13. (Creating a) [Product name] (weed) barrier STOPS WEEDS\* before they start!
14. (• (Vibrant)( strong) (vivacious)( hardy) (robust)(sturdy)( vital)( flourishing)( lush) (resilient)( lasting)( stable)( staunch) (prospering)( garden) Plant(s))
  - (• Mulch)
  - (•[Product name] Weed Barrier
  - (• Weed(s)( seeds))
  - (• Roots)
  - (• Soil)
  - (• Creates Weed Barrier)
  - (• Stops weed(s)\* (seeds) from growing)
  - ((• Stops weed(s)\* (seeds) from germinating)
  - ((•Prevents weed(s)\* (seeds) from germinating)
15. [Product name] Weed Barrier (prevents) (keeps)(stops) weeds\* from germinating
16. [Product name] Weed Barrier (prevents) (keeps)(stops) weed\* seeds from germinating
17. [Product name] Weed Barrier technology (prevents)(keeps)(stops) weeds\* from germinating
18. [Product name] Weed Barrier technology (prevents)(keeps)(stops) weed\* seeds from germinating
19. Prevent weeds\* by (stopping) (halting) (controlling) their germination
20. Control weeds\* by (stopping) (halting) (controlling) their germination
21. [Product name] allows established plants to (grow) (survive)( flourish).

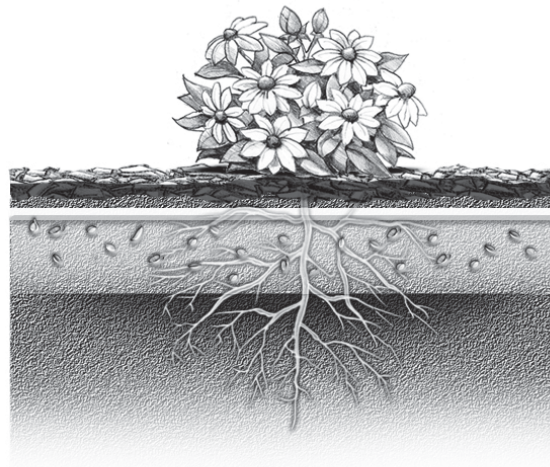
22. [Product name] (weed) barrier prevents weeds\*( for) (4) (four) (months.)
23. [Product name] protective barrier prevents weeds\* (for) (4) (four) (months.)
24. [Product name] (weed) barrier blocks weeds( for) (4) (four) (months.)
25. [Product name] protective barrier blocks weeds\* (for) (4) (four) (months.)
26. [Product name] (weed) barrier keeps weeds\* under control for (4) (four) months.
27. [Product name] protective barrier prevents weeds\* from germinating (for) (4) (four) (months.)
28. [Product name] protective barrier prevents weed\* seeds from germinating (for) (4) (four) ( months.)
29. [Product name] barrier prevents weeds\* from germinating (for) (4) (four) (months.)
30. [Product name] weed barrier prevents weeds\* from germinating (for) (4) (four) (months.)
31. (Stop) (block) weeds\* with [Product name] (weed) barrier (technology)
32. Weed\* seeds are stopped by [Product name] (weed) barrier (technology)
33. [Preventing creates a weed barrier that stops weeds\* from germinating]

\*See Use Directions for complete list of treated weeds.

(3D Imagery Optional)



(2D imagery Optional)





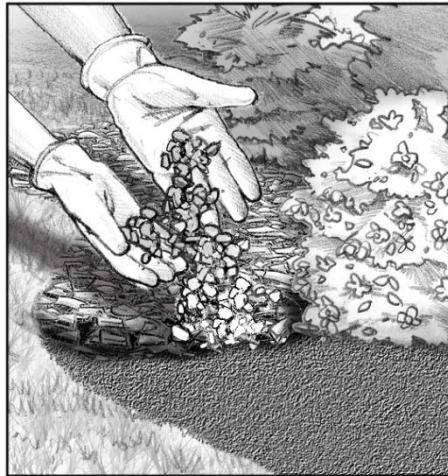
## The Preen Routine

[Note to the reviewer that all these visuals below for the Preen Routine are to be optional]

(4) (Four) (easy) (simple) (steps to weed prevention)



(1.) (One) Remove existing weeds



(2.) (Two) Apply mulch



(3.) (Three) Sprinkle [Product name] (product) (granules) evenly



(4.) (Four) Water ([Product name] (product) (granules]) into soil

(Reapply [Product name] (product) every (4) (four) (months)

(Weeds grow throughout the season) It's never too late or too early to apply [Product name] (during the growing season.)



(Without Preen)  
(Untreated)



(With Preen)  
(Treated)



(Represents actual results)  
(Actual results may vary by weather)

### **GreenView® Brand of Products Optional Marketing Claims**

1. [GreenView®] [Company name] guarantees you will be satisfied with the performance of this product when used as directed. If you are not satisfied, return to a[n] [Company name] store with proof of purchase for a replacement product or full refund of the purchase price. Or you can mail proof of purchase to the address listed below for a full refund. [Company name and address]
2. [GreenView®] [Company name] guarantees you will be satisfied with the performance of this product when used as directed, or your money back. If not satisfied, describe the nature of your problem and simply send proof of purchase to [Lebanon Seaboard Corporation, 1600 East Cumberland Street, Lebanon, PA 17042] [Company name and address].
3. For more information on [our complete line of ][GreenView®] [Company Name] [Brand Name] [Lawn and Garden Products,] visit [our website at] [www.lebsea.com] [www.greenviewfertilizer.com] [Insert product images]

4. GreenView® (logo) **GREENVIEW®**
5. GreenView® is a registered trademark of Lebanon Seaboard Corporation.
6. GreenView® yard wide guarantee [green leaf graphic] [GreenView® logo]
7. GreenView [Fairway Formula] fertilizers utilize a unique, slow release nitrogen source.
8. GreenView® and METH-EX® are registered trademarks of Lebanon Seaboard Corporation.



9. [\* See back panel for more details] , as part of design only shown when used on label surfaces, other than the back panel)
10. GreenView and [GreenSmart] [GREENSMART] are registered trademarks of Lebanon Seaboard Corporation.
11. Scan the code to watch how GreenView's Ready2Go Spreader™ [works][makes lawn care easier than ever.][or visit <http://www.greenviewfertilizer.com/ready2go-spreader-video>]



12. Scan the code to watch how GreenView's Ready2Go Spreader™ [saves time][makes lawn care easier than ever.][or visit <http://www.greenviewfertilizer.com/ready2go-spreader-video>]



13. Scan the code to watch how GreenView's Ready2Go Spreader™ [saves time and eliminates guesswork.] [or <http://www.greenviewfertilizer.com/ready2go-spreader-video>]



### **Preen® Brand of Products Optional Marketing Claims**

1. To the extent consistent with applicable law, [Company name] guarantees you will be satisfied with the performance of this product when used as directed, or your money back. If not satisfied, describe the nature of your problem, and send with proof of purchase to: [Company name and address]
2. Preen® logo



3.

4. <sup>With:</sup> **Preen**<sup>®</sup>  
WEED CONTROL
5. <sup>With:</sup> **Preen**<sup>®</sup>  
<sup>Featuring:</sup> **Preen**<sup>®</sup>  
WEED CONTROL
6. <sup>With:</sup> **Preen**<sup>®</sup>  
WEED CONTROL
7. **Preen**<sup>®</sup> Lawn Crabgrass Control
8. Featuring **Preen**<sup>®</sup> Lawn Crabgrass Control
9. Contains: **Preen**<sup>®</sup> Lawn Crabgrass Control
10. Preen® Guarantee
11. Preen® is a registered trademark of Lebanon Seaboard Corporation.
12. [Visit] [www.preen.com](http://www.preen.com)
13. Keep your lawn looking great all year [ Early Spring ] [ Late Spring ] [Fall] (show other Preen Lawn package images with product name)
14. Preen Weed Preventer & Plant Food
15. Preen works so you don't have to
16. Preen [weeds] [covers] more
17. Try [these] other Preen products!
- [Preen Lawn Stepsaver Weed Control Plus Fertilizer]
  - [Preen Weed & Grass Killer]
  - [Preen Mulch Plus]
  - [Preen [Garden] Weed Preventer Plus Plant Food]
  - [Preen Landscape Weed Control Fabric]
  - [Preen Organic Vegetable Garden Weed Preventer]
  - [Preen Southern Weed Preventer Plus Plant Food]
  - [Preen Southern Weed Preventer]
  - [Preen [Garden] Weed Preventer]
  - [Preen [Garden] Weed Preventer with Battery-Powered Spreader Cap]
  - [Preen Lawn Weed Control]
  - [Preen Lawn Weed & Feed]
  - [Preen Lawn Crabgrass Control]

- [Preen Weed Control Plus Crabgrass Preventer]
  - [Preen Southern Weed Preventer with Battery-Powered Spreader Cap]
  - [Landscape Mulch]
18. Scan the code to watch how Preen's Ready2Go Spreader™ [works][makes preventing lawn weeds easier than ever.][or visit <http://www.preen.com/ready2go-spreader>]



19. Scan the code to watch how Preen's Ready2Go Spreader™ [saves time][makes preventing lawn weeds easier than ever.][or visit <http://www.preen.com/ready2go-spreader>]



20. Scan the code to watch how Preen's Ready2Go Spreader™ [saves time and eliminates guesswork.] [or visit <http://www.preen.com/ready2go-spreader>]



21. (Company Phone number)[1-800-233-1067]

### ACE® Brand of Products Optional Marketing Claims

1. ACE® is a registered trademark of ACE Hardware Corp.
2. Green Turf® is a registered trademark of [Company Name]
3. Made in the USA for ACE Hardware Corp., Oak Brook, Illinois, 60523, USA
4. Questions or Comments Call 1-XXX-XXX-XXXX



5. Satisfaction Guaranteed ACE® Promise [circle graphic]
6. Telephone graphic
7. [www.acehardware.com](http://www.acehardware.com)
8. The ACE® Promise. If this ACE product when used for its intended purpose, fails to give you complete satisfaction, return the item to the ACE Hardware store where purchased for free replacement of the same or similar item.

9.





10.

11. When applied as directed, this product meets the guidelines for metals adopted by the Association of American Plant Food Control Officials.

### **Sta-Green® Brand of Products Optional Marketing Claims**

1. Computer and phone graphics
2. If you use [TURF Fertilizer Plus Dimension® Weed Control] as directed and are not completely satisfied, send proof of purchase from this package and the original cash register receipt to the address below. We will refund the purchase price you paid.
3. LOOK! For other quality Sta-Green® lawn & garden products. For more information, visit us on our website at [www.sta-green.com](http://www.sta-green.com) [or call our Consumer Service [Customer Service] Hotline [Number] at 1-xxx-xxx-xxxx.
4. Money Back Guarantee [optional graphic]
5. Sta-Green® is a registered trademark of [Company name]



6. Sta-Green® logo
7. The Sta-Green® Promise
8. Your satisfaction guaranteed or your money back!

### **Private Label Customer Brand of Products Optional Marketing Claims**

1. [Company name] guarantees you will be satisfied with the performance of this product when used as directed, or your money back. If not satisfied, describe the nature of your problem, and send with proof of purchase to: [Company name and address]
2. [Private label] is a registered trademark of [Company name]
3. [Private label] logo
4. Computer and phone graphics
5. If you use [TURF Fertilizer Plus Dimension® Weed Control] as directed and are not completely satisfied, send proof of purchase from this package and the original cash register receipt to the address below. We will refund the purchase price you paid.
6. LOOK! For other quality [Private label] lawn & garden products. For more information, visit us on our website at [or call our Consumer Service [Customer Service] Hotline [Number] at 1-xxx-xxx-xxxx.
7. Money Back Guarantee [optional graphic]
8. Your satisfaction guaranteed or your money back!

## Agway Brand of Products Optional Marketing Claims



1.



2.



3.

4. [Brand] is a [registered] trademark of [Company]

5. 4 Stage Lawn Care Program

6. Agway Guarantees Satisfaction

7. Agway Stage 1 Crabgrass Control & Fertilizer

8. Greenlawn® Crabgrass Preventer With Lawn Food (Note: alternate brand name)

9. Agway® and Greenlawn® are registered trademarks of Southern States Cooperative, Inc.

10. Agway® logo

11. Calendar Application Icon

12. Guaranteed Satisfaction logo/pictogram

13. If for any reason you are not fully satisfied with the performance of this product, we want to know. Just bring the item back to the store and we will exchange it or issue a refund.

14. Manufactured for and distributed by Southern States Cooperative, Inc., 6606 West Broad Street, Richmond, VA 23230

15. To find an Agway store near you visit [www.agway.com](http://www.agway.com)

16. If for any reason you are not fully satisfied with the performance of this product, we want to know. Just bring the item back to the store and we will exchange it or issue a refund.

17. Agway® and Stage® are registered trademarks of Southern States Cooperative, Inc.

18. To find a store near you visit [www.agway.com](http://www.agway.com)

19. For more information on spreader settings go to [www.agway.com](http://www.agway.com)

20. For more information, visit [www.agway.com](http://www.agway.com)

21. NOTICE: Buyer assumes all responsibility for safety when use not in accordance with directions.

22. [Agway (Subregistrant)] 4 Stage Lawn Program makes it easier to have a lush, green lawn. Our 4 simple applications eliminate the guesswork and give you professional lawn care results. Each stage combines just the right amount of fertilizer with the right amount of control and prevention. Just match each stage to the correct season and you'll prevent

crabgrass, control weeds [and insects] and prepare your lawn for the winter. It's what your lawn needs for strong growth.

23. Guaranteed Satisfaction
24. (Subregistrant) Guarantees Satisfaction
25. 4 Stage Lawn Care Program.[Pictogram numbers 1-4] [pictogram for 4 Step Program]
  - March 1 – April 30
  - April 15 – June 15
  - August 1- September 30
26. No crabgrass [Pictogram crabgrass circle with slash through it]
27. Stage 1 [Pictogram crabgrass with slash through it]
28. AGWAY Greenlawn products are the quality choice in complete lawn care. You determine your lawn needs, and you'll find a Greenlawn product to help you. Fertilizers, lawn starters, crabgrass prevention, weed [and insect] control, winterizers - everything your lawn needs for a lush, green lawn and year-round protection. Each one is easy to apply and guaranteed to produce quick, long-lasting results.
29. Notice: Read the entire label. Use only according to label directions. Before buying this product, read the Warranty Section elsewhere on this label. If terms are not acceptable, return the unopened container at once.
30. AGWAY Guarantees Satisfaction If for any reason you are not fully satisfied with the performance of this product, we want to know. Just bring the item back to the store and we will exchange it or issue a refund.
31. For best results, use an Agway spreader.
32. Contains Dimension® Herbicide.

**Menards® Brand of Products Optional Marketing Claims:**

1.



2.



3.



4.

5. FOREVERGREEN® Lawn Builder(R) Crabgrass Preventer With Lawn Food (Note: Alternate Brand Name)



6.



7. 100% Satisfaction Guaranteed or Your Money Back



8. SLOW-RELEASE NITROGEN FEEDS YOUR LAWN OVER (2) (3) (4) MONTHS!

9. 4-STEP LAWN CARE PROGRAM

10. Crab-Buster® is a registered trademark of Dow AgroSciences LLC.

11. Distributed by Eau Claire Coop Oil Co., P.O. Box 837, Eau Claire, WI 54702

12. Features:

- i. Prevents crabgrass & fertilizes in one application.
- ii. [Crab-Buster®] herbicide controls crabgrass and many other annual weedy grasses before they grow.
- iii. Gives a full feeding of fertilizer.
- iv. Slow-Release Nitrogen thickens and provides a lush and deep green lawn - Feeds your lawn [over] [up to], [two][three] months!

13. Fertilize turf [lawn] to improve color, density, uniformity and resistance to traffic and disease.

14. ForeverGreen® is a registered trademark of E C Grow Incorporated Corporation.

15. If, for any reason, after using the Menards® Premium 4-Step Fertilizer Program, you are dissatisfied with the results, simply bring the label from a bag of Menards® Premium Lawn Fertilizer and proof of purchase to the store this product was purchased from for a full refund.

16. Lawn Builder

17. Menards is a registered trademark of Menard, Inc. Corporation.

### **Pike Nurseries® Brand of Products Optional Marketing Claims**



- 1.
2. PIKE NURSERIES is a registered trademark of Pike Nurseries Acquisition, LLC.
3. **Pike Nurseries** Corporate Office, 2675 Breckinridge Blvd., Suite 300, Duluth, GA 30096
4. Satisfaction Guaranteed



## Armstrong Garden Centers Brand of Products Optional Marketing Claims



- 1.
2. Armstrong Garden Centers, Inc. , 2200 E. Route 66, Suite 200, Glendora, CA 91740

## Vigoro Brand of Products Optional Marketing Claims



- 1.
- 2.
3. Vigoro is a registered trademark of HOMER TLC, INC. CORPORATION
4. Vigoro, is a ® sub-brand of The Home Depot.
5. THD corporate address is: **The Home Depot** , 2455 Paces Ferry Road Atlanta, Georgia 30339
6. [Apply Early Spring or Fall] [APPLY EARLY SPRING OR FALL]
7. The Home Depot (logo)



8. Garden Club (logo)



9. MEMBERSHIP IS FREE!
10. www.homedepotgardenclub.com
11. Beautiful Lawns Since 1924™

12. Vigoro logo



13. Prevents crabgrass up to 4 months!
14. Greens [lawns] [grass] in 72 hours & promotes thick,[green] growth [!]
15. Contains time-released nitrogen for extended feeding
16. Non-staining formula!

17. Feeds 2,500 SQ FT

18. Logo WORKS THE FIRST TIME OR YOUR MONEY BACK!



19. Why Fertilize the Lawn?

While it is easy to see that satisfying deep green when you fertilize, regular feedings can actually do much more....

1. Promote a deep and dense root system that is better able to reach water and find nutrients during tough heat & drought, so lawn stays greener, longer and bounces back faster
2. Thicken lawn with additional blades of grass, making it more resistant to bare spots and thinning
3. Help prevent weeds by making it difficult for weed seeds in the air to find soil to root, as well as crowd out existing weeds

Unfed Lawn (image)



vs.

Regularly Fed Lawn (image)



20. Next Feeding

Feed every 8 weeks for optimal results

Apply anytime weeds are actively growing. +

+Maximum of 2 applications per year

(optional image of Weed & Feed bag) and or



(optional image of Weed & Feed Spreader)



Or

Apply anytime during the growing season.  
(optional image of Lawn Fertilizer bag) and or



(optional image of Lawn Fertilizer spreader)



**21. VIGORO GUARANTEE:**

If for any reason you, the consumer, are not satisfied after using this product, you are entitled to get your money back. Simply send us proof of purchase and we will mail you a refund check promptly.

- 22. MONEY BACK GUARANTEE** [If you are not satisfied with the performance of this product when used as directed, return to a Home Depot store with proof of purchase for a replacement product or full refund of the purchase price. Or you can mail proof of purchase to the address listed below for a full refund: Lebanon Seaboard Corporation, 1600 E. Cumberland Street, Lebanon, PA 17042.] [The Home Depot guarantees you will be satisfied with the performance of this product when used as directed. If you are not satisfied, return to a Home Depot store with proof of purchase for a replacement product or full refund of the purchase price. Or you can mail proof of purchase to the address listed below for a full refund: Lebanon Seaboard Corporation, 1600 E. Cumberland Street, Lebanon, PA 17042.]

**23. Visit Us On The Internet or Call Our Customer Satisfaction Hotline (image)**



## Orchard Supply Brand of Products Optional Marketing Claims



1.



2.



3.

4. Orchard Supply Hardware is a registered trademark of Orchard Supply Hardware, LLC.

5. Orchard Supply Hardware, 6450 Via Del Oro, San Jose, CA 95119

6. Spreader Models for Spreader Setting Table:

## Wal-Mart Expert Gardener



1. Expert Gardener logo [logo shown above].

2. [Expert Gardener Guarantee][See Guarantee below] Option A

### [Guarantee

When you choose Expert Gardener® products, you can be assured of high quality and performance in your lawn and garden. If for any reason you are not completely satisfied with this product, we will refund your money. Please mail your name, address and proof of purchase (dated receipt and package UPC/barcode) to the address listed below. Also, to ensure quality control, please write us a brief note explaining your experience with our product and reason for seeking a refund. ]

### Option B

[MONEY BACK GUARANTEE]

[If you are not completely satisfied with this product, please mail your name, address and proof of purchase (package UPC) and a brief explanation for seeking a refund.]

3. Guaranteed and Distributed by: [company name]



4. Consumer Helpline 1-866-369-2533



5. Expert Gardener® is Marketed Exclusively by Wal-Mart Stores Inc. Bentonville, AR 72716.

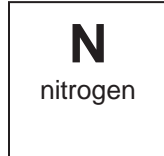
6. Expert Gardener ® is a [registered] trademark of [company name]

9 Shop @ [www.walmart.com](http://www.walmart.com)

10 Phosphate Free- Helping Our Water Sources

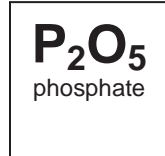
11 Elena Elisseeva, 2010 Used under license from Shutterstock.com

[N  
analysis]



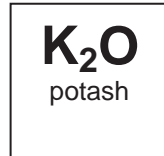
-

[P  
analysis]



-

[K  
analysis]



For lush  
green  
plant  
growth

For  
overall  
plant  
vigor

### True Value



- 1.
2. Manufactured by: [Company Name and address]
3. GREENTHUMB® is a [registered] trademark of [company name]

**Tractor Supply**



- 1.
2. Manufactured by: [Company name]
3. Manufactured Exclusively for Tractor Supply Company®
4. GroundWork™ is a trademark of Tractor Supply Company®

**Wondergro**



- 1.



- 2.
3. WONDERGRO® is a registered trademark of Lebanon Seaboard Corporation.

**SPREADER SETTINGS**

Drop Spreaders	Calibration Settings at Specified Rate (lb/1000 sq ft)					
	1.5	2.1	2.3	2.7	3.1	6.0
Agri-Fab	XX	XX	XX	XX	XX	XX
Agway						
Earthway						
Easy Green						
Ferti-Lome						
Glorion						
Greenview® Spred III						
Greenview® Spred® XP1						
Greenview® Show N Tell						
Jonathan Green						
K-Mart K-Grow						
Lawncrafter 45-0311-3						
Ortho						
Precision						
Red Devil Drop						
Republic Drop						
Scotts AccuGreen® 1000						
Scotts AccuGreen® 2000						

Scotts AccuGreen® 3000 Scotts Easy Gro Scotts PF-1 Scotts PF-3 Scotts Precision Sears Lawn Crafter Scotts® Turfbuilder® Classic Drop SpredDevil Sta-Green Statesman I Statesman II TrueServe Green Thumb 7300 Vigoro						
<b>Broadcast Spreaders</b>						
Ace Rotary Agri-Fab 45-0187 Agway Ames 24-626 Commercial Cyclone Model B1-80 Earthway EV-N-Spred 2600 Ferti-Lome Franks Glorion Green Line Greenview® Jet-Spred II Greenview® Jet-Spred III Greenview® Jet-Spred SS1 Jonathan Green Lawncrafter Ortho 545 EZGro Pennington 2050SU Precise Fit Precision Pro Precision Precision Pro Precision Products PrizeLAWN LiL' FOOT (LF-1) Ready2Go Spreader® Multi Purpose Granular Spreader Red Devil	<b>XX</b>	<b>XX</b>	<b>XX</b>	<b>XX</b>	<b>XX</b>	<b>XX</b>

Republic 545 EZGro Republic EZ Broadcast 75450 Republic EZ Grow Republic Roto-Jet Scotts Basic Scotts Deluxe™ EdgeGuard® Scotts EasyGreen Scotts® Deluxe™ EdgeGuard® Scotts EdgeGuard Scotts® Lawn Pro® Scotts SpeedyGreen® 1000™ Scotts SpeedyGreen® 2000™ Scotts SpeedyGreen® 3000™ Scotts Standard Scotts® Turfbuilder® EdgeGuard® DLX or MINI Sears 671-19261 Sears Craftsman 24322 85lb Sta-Green Statesman Pull Behind Stinger Rotary TrueServe Green Thumb 200A Vigoro Vigoro 4300 Vigoro 10,000 Vigoro 15,000						
---	--	--	--	--	--	--