



# CUPRINOL®

## SOLID COLOR

# STAIN & WOOD PRESERVATIVE



Keeps water out  
Keeps beauty in  
Protects against  
mildew and rot



**CAUTION**  
KEEP OUT OF REACH  
OF CHILDREN  
READ CAUTIONS AND  
WARNINGS ON BACK  
EPA Est. 518-CT-7

**1 GALLON**  
**3.785 LITERS**  
Active Net Ingredients: 0.3%  
bis(tributyltin) oxide  
Inert Ingredients: 99.7%  
Total: 100.0%

Source: **DRUGGIST DIV. E-B INDR**

<b>8102708</b>	<b>CE 20-777</b>	<b>BP. P51606</b>
<b>1949TR</b>	<b>7-625</b>	<b>EP3</b>
<b>21-75</b>	<b>254-776</b>	<b>5-2262</b>

Design: **CUPRINOL SOLID COLOR STAIN & WOOD PRESERVATIVE**

Buyer's Approval  Sketch  B&W  Color proof proof

To be filled in by Buyer. Check (X) applicable boxes:

Design and arrangement	Spelling and punctuation	Colors
<input type="checkbox"/> Approved as submitted	<input type="checkbox"/> Approved as submitted	<input type="checkbox"/> Approved as submitted
<input type="checkbox"/> Change as detailed	<input checked="" type="checkbox"/> Change as detailed	<input type="checkbox"/> Change as detailed

Date Signed: **11/13/75**

Buyer's Signature: *[Signature]*

**Read before signing**

Expresses that (1) Continental Can Company, Inc. shall not be liable for (a) any error in the attached proof as returned to Continental with such error plainly noted in writing, (b) the failure of any of the colors to comply with any or all state or Federal law of regulation, (c) any part of the attached design, the property rights of others acquired, without limitation thereof, by usage, registration, or otherwise, (d) any error in the attached, although Continental will duplicate the colors as closely as possible, (e) the fact that the colors are not being exactly the same as the hand colors, (f) any error in the attached, although Continental will duplicate the colors as closely as possible, (g) the fact that the colors are not being exactly the same as the hand colors, (h) the fact that the colors are not being exactly the same as the hand colors, (i) the fact that the colors are not being exactly the same as the hand colors, (j) the fact that the colors are not being exactly the same as the hand colors, (k) the fact that the colors are not being exactly the same as the hand colors, (l) the fact that the colors are not being exactly the same as the hand colors, (m) the fact that the colors are not being exactly the same as the hand colors, (n) the fact that the colors are not being exactly the same as the hand colors, (o) the fact that the colors are not being exactly the same as the hand colors, (p) the fact that the colors are not being exactly the same as the hand colors, (q) the fact that the colors are not being exactly the same as the hand colors, (r) the fact that the colors are not being exactly the same as the hand colors, (s) the fact that the colors are not being exactly the same as the hand colors, (t) the fact that the colors are not being exactly the same as the hand colors, (u) the fact that the colors are not being exactly the same as the hand colors, (v) the fact that the colors are not being exactly the same as the hand colors, (w) the fact that the colors are not being exactly the same as the hand colors, (x) the fact that the colors are not being exactly the same as the hand colors, (y) the fact that the colors are not being exactly the same as the hand colors, (z) the fact that the colors are not being exactly the same as the hand colors.

518-66

CUMRINO

SOLD COLOR

# STAIN & WOOD PRESERVATIVE

Castle  
Gray  
#122  
518-66

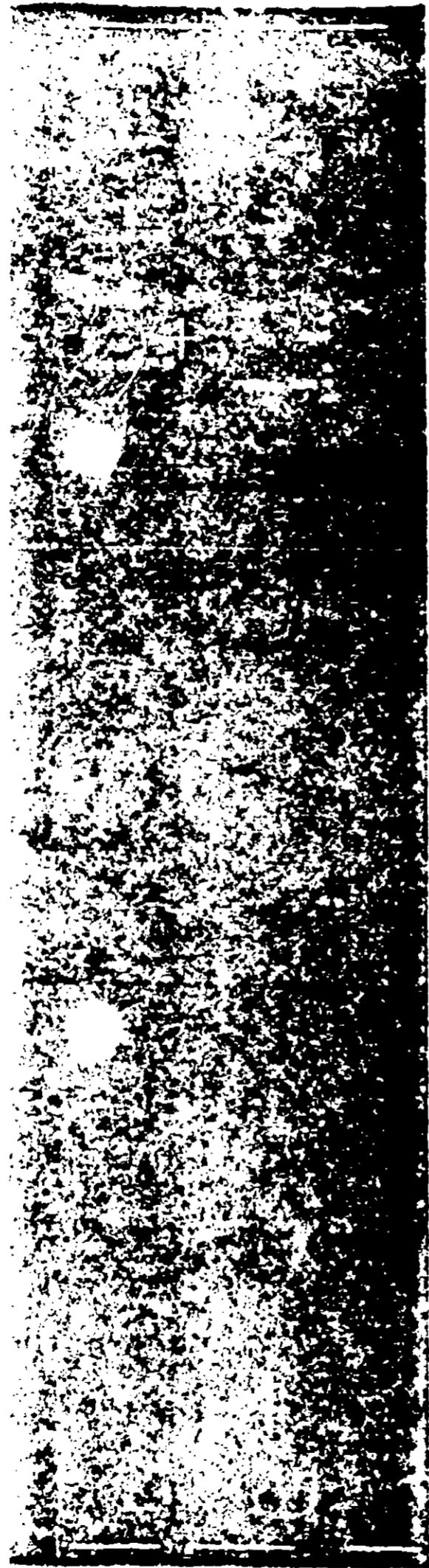
KEEPS WOOD  
KEEPS BEAUTY  
PROTECTS AGAINST  
MILDEW & FUNGUS

CAUTION

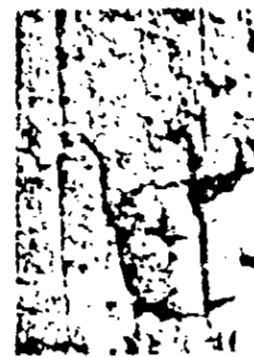
KEEP OFF OF  
EYES & SKIN  
WASH WITH WATER  
IF CONTACTED

USE WITH  
WOOD PRESERVATIVE  
FOR BEST RESULTS

Small, illegible text at the bottom left, possibly a manufacturer's name or address.



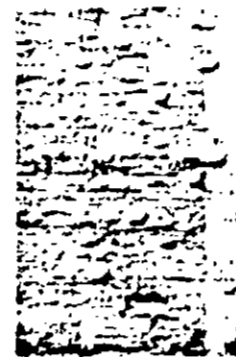
**CUPRINOL**  
**STAIN & WOOD PRESERVATIVE**



Wood dipped in Cuprinol resists rot.



Mildew discoloration.



Exceeds water repellency requirements of Federal Spec. TT-W-5725 3.7

**For All Exterior & Interior Stain Uses**

CUPRINOL STAIN & WOOD PRESERVATIVE maintains beauty and protection to keep your exterior and interior attractive and safe from rot, mildew, discoloration, warping and swelling. Not recommended for use on patio furniture. CUPRINOL stains give your wood lasting colors and warmth to your home. Semi-Transparent stains show wood grain and texture. Solid Color stains subdue the wood grain but show wood texture.

**Triple protection** - *Durable, light-fast pigments* block out the sun's rays and resist fading.

**Long lasting water repellents** - keep the moisture out and promote pigment wash-off water repellency.

**Effective fungistat (TBTO)** - a germicide that kills and resists fungi that produce rot and mildew.

\*Cuprinol will resist mildew attack after application; however, it will not kill mildew present on wood.

Test for mildew by applying a 50% solution of water and water. Mildew is present if applied to the surface.

Scrub all mildew-infected surfaces with a solution of 2 1/2 Cup Baking Soda in 1 Gallon of water.

1 Qt. Household Bleach in 5 Qt. of water.

Let stand 30 minutes, then rinse with clean water. Apply Cuprinol only after area is completely dry.

CUPRINOL STAIN & WOOD PRESERVATIVE is easy to apply. Has no unpleasant odors and may be painted over.

**For wood protection without staining** - use CUPRINOL Green - 10 for wood in contact with the ground.

CUPRINOL Clear - 20 for protection of wood in contact with the ground and as an undercoat for paint.

**Trees - Wood and Cuprinol Stain** - An excellent method on protecting and beautifying trees. Detailed information available from Darworth Company, Dept. 100.

Darworth, Inc. 1973 All Rights Reserved

ACCEPTED  
 JAN 29 1975  
 Under the Federal Insecticide, Fungicide, and Rodenticide Act,  
 Registration No. 578-666  
 23417762

**CAUTION: COMBUSTIBLE MIXTURE**

**N.Y.F.D. Certificate of Approval No. 3799**

DO NOT USE, POUR, SPILL OR STORE NEAR HEAT OR OPEN FLAME.

CUPRINOL products conform to Air Pollution Control District, City of Los Angeles Rule 6b

**Directions:** BEFORE USE, THOROUGHLY MIX CONTENTS OF CAN. Stir occasionally during use to keep color uniform. Use on clean, dry, primed, unprimed wood or on previously stained surfaces which are free of all mildew\* (see discoloration). Apply liberally by brush, spray, roller, or by dipping (siding 3 minutes, millwork 5 minutes). If stain is NOT freely absorbed by wood, allow surface to weather until adequate absorption is attained. The lighter colors will vary somewhat on different woods from the sample shown; recoating over other colors may also affect the color. A sample brush out is recommended. Do not use on abraded plywood. The more preservative absorbed by the wood, the longer and more effective the protection. Thoroughly cover cut ends and joints. For best results, apply in the shade at 40 -90 F. Do not thin.

CUPRINOL PRESERVATIVE STAINS dry to the touch rapidly, but thorough drying requires 24 hours. If desired, a second coat may be applied at any time after the initial application.

Clean CUPRINOL from brushes, etc. with mineral spirits, or turpentine.

**Coverage:** Approximately 400 sq. ft. per gallon when brushed on smooth woods. Textured surfaces absorb more stain.

**Caution:** Harmful if swallowed. May be absorbed through skin. Causes skin irritation. Avoid breathing vapor or spray mist. Use in well ventilated area. Avoid contact with skin, eyes or clothing. In case of contact, immediately remove contaminated clothing and wash skin with soap and water; for eyes flush with plenty of water and get medical attention. Wash clothing before reuse. Do not reuse empty container. Destroy it by perforating or crushing. Bury or discard in a safe place. Avoid storage near feed or food products.

This product is toxic to fish. Keep out of lakes, streams or ponds. Do not contaminate water by cleaning of equipment or disposal of wastes. Apply this product only as specified on this label. Keep out of reach of children.

**LIMITED WARRANTY**

The manufacturer will replace this product if, within 1 year of the date of purchase, it is shown to be defective. THE MANUFACTURER'S LIABILITY UNDER ANY WARRANTY, WHETHER EXPRESS OR IMPLIED, IS LIMITED SOLELY TO REPLACEMENT OF THE PRODUCT AND DOES NOT INCLUDE LABOR OR OTHER CONSEQUENTIAL DAMAGES.

**Darworth**

ACQUICORN, INC. (N.Y.)

