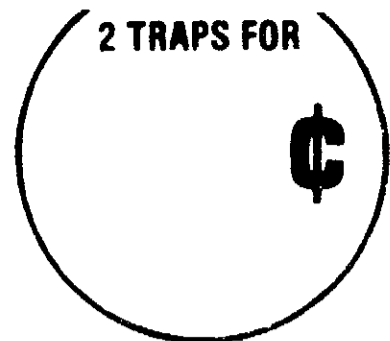


Antrol[®]

ROACH TRAPS

WITH BAYGON[®]



Antrol[®]

ROACH TRAPS

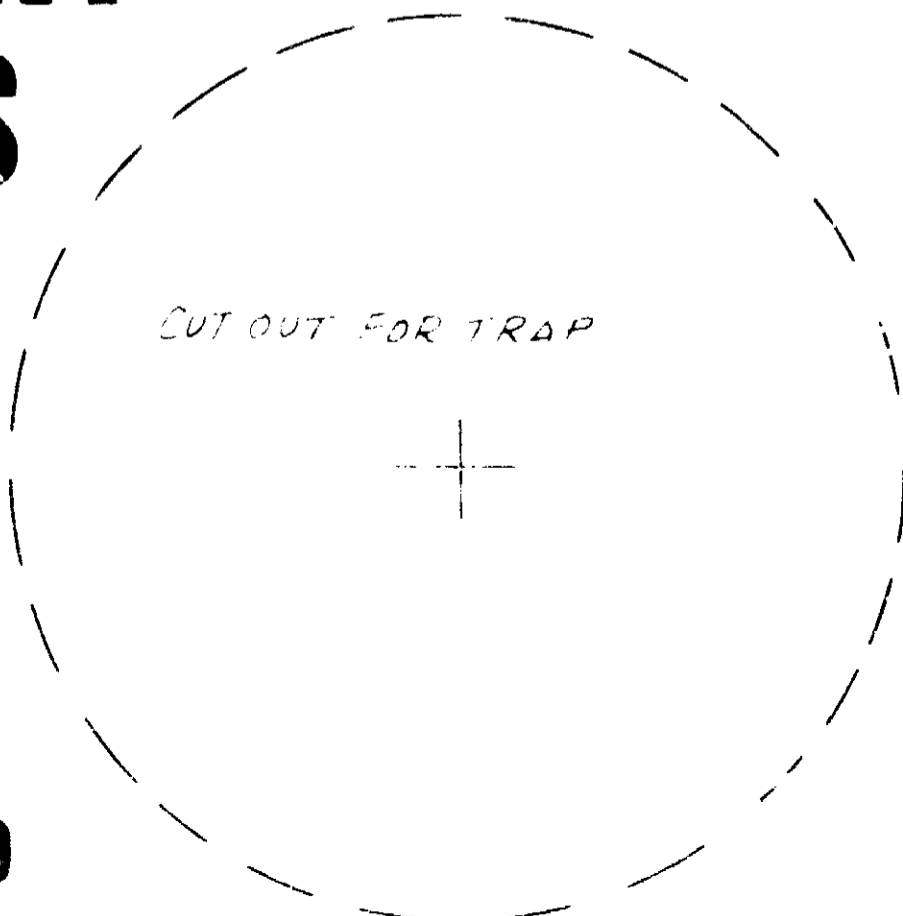
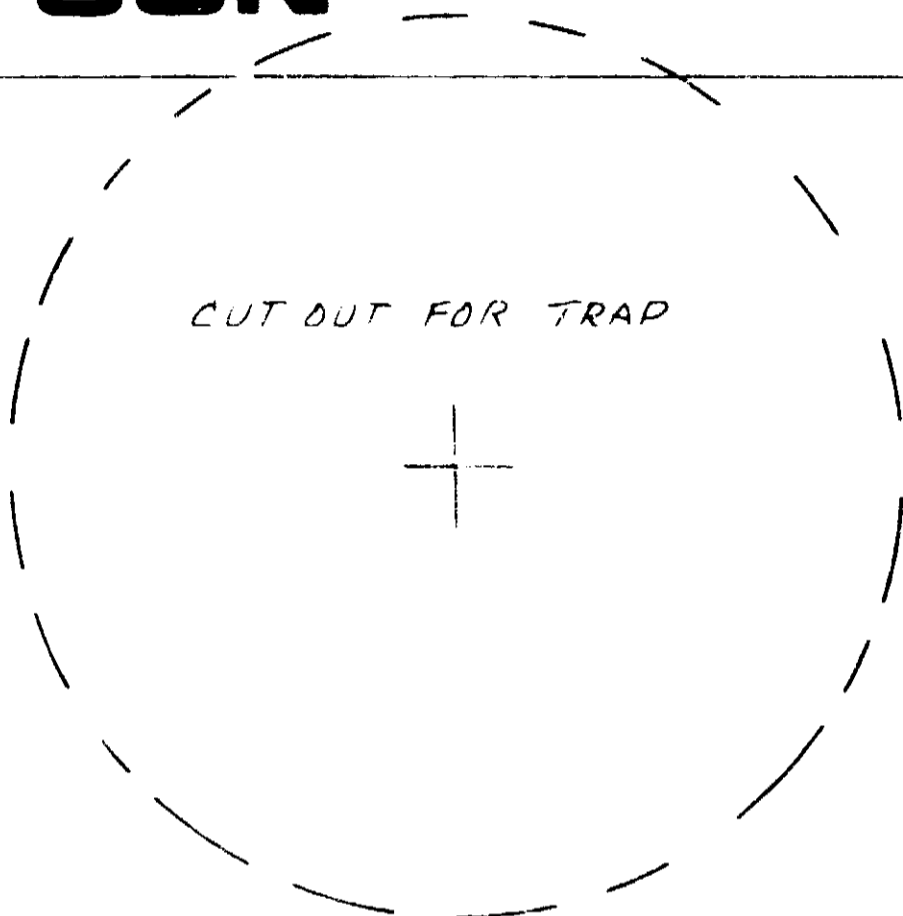
WITH BAYGON

USE WHEREVER ROACH INFESTATION OCCURS

**KILLS
EVEN
RESISTANT
ROACHES**



**TOTAL NET WT.
1.05 OZ. (30 GRAMS)**



ROACHES ENTER HOLES TO FEED-RETURN TO NESTS TO DIE

DIRECTIONS

Place trap where roaches are numerous — under sinks, behind refrigerators, in cupboards, in closets, near baseboards, shelves and other areas where roaches hide. Use 2 or 3 traps for each area. Roaches feed at night and return to hiding places to die.

CAUTION — Harmful if swallowed or absorbed thru skin. Do not get on skin, in eyes, or on clothing. Wash with soap and water after use. Do not contaminate feed or foodstuffs. Do not use in edible product areas of food processing plants. Place traps only in areas inaccessible to children and pets.

If poisoning occurs, get prompt medical aid. Atropine sulphate is antidotal.

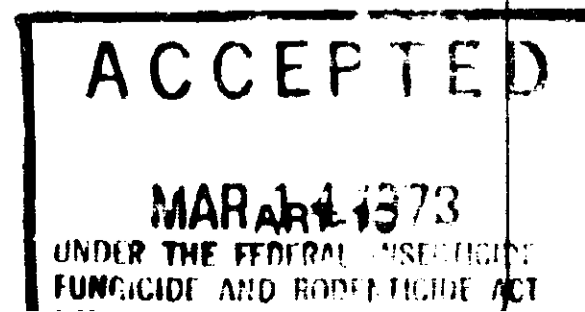
ACTIVE INGREDIENT: <i>o</i> -Isopropoxyphenyl methylcarbamate*	2%
INERT INGREDIENT	98%
	TOTAL 100%

*U.S. Patent No. 3,111,539 Canadian Patent No. 725,204

EPA Registration No. 475-173

BOYLE-MIDWAY INC.
NEW YORK, N.Y. 10017

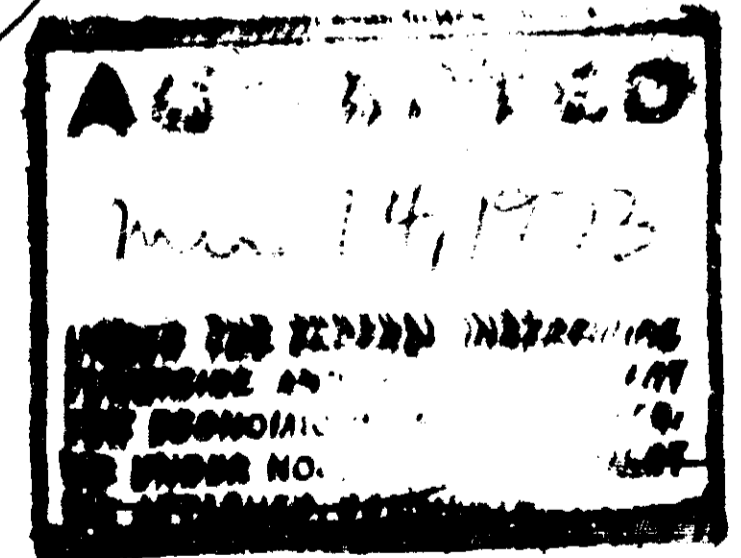
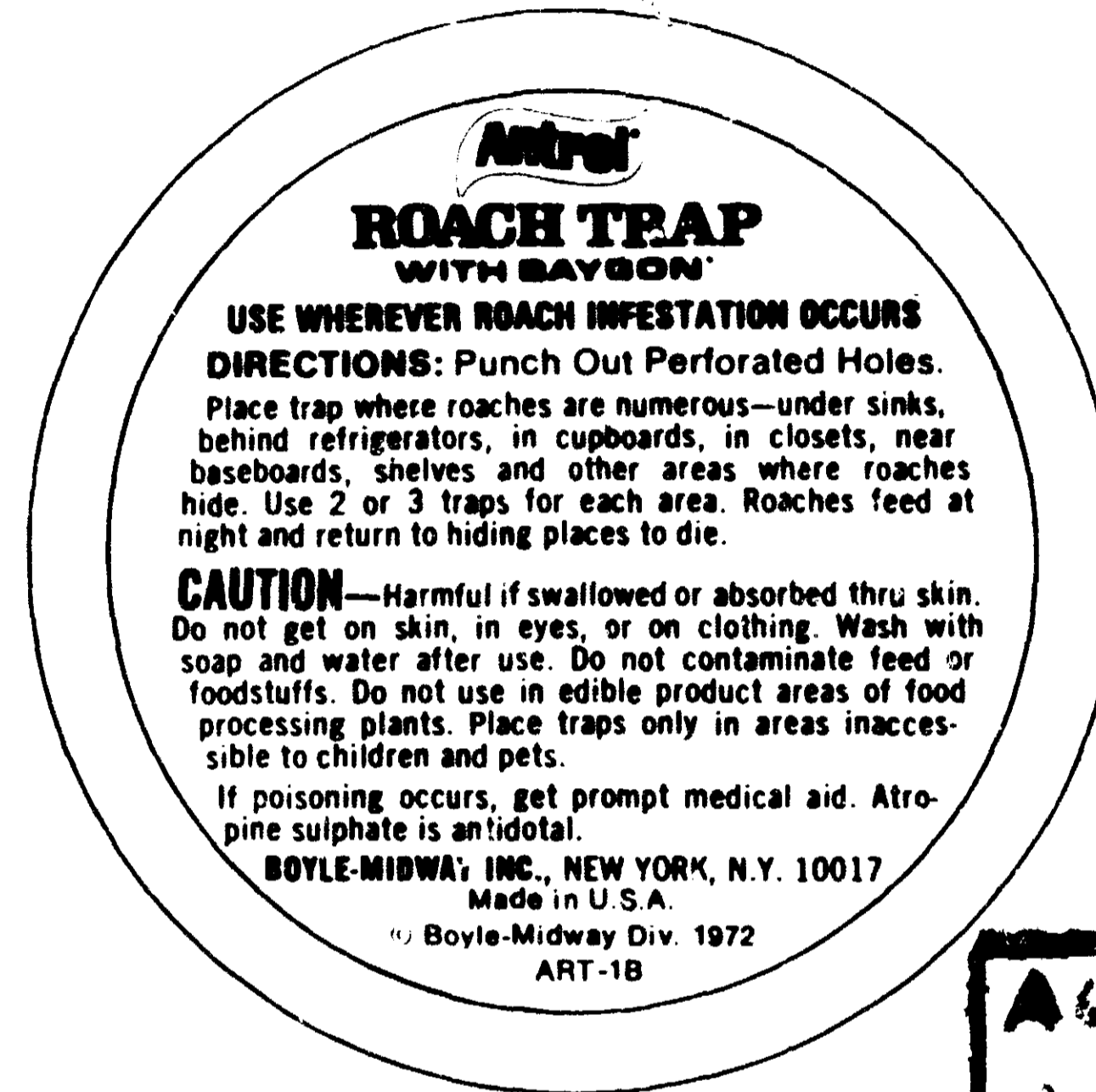
Made and Printed in U.S.A.



TRAP TOP



TRAP BOTTOM



TRAP SIDE

