

DIRECTIONS

For use in Cleaning & Sanitizing in one operation use dilution 1 to 2 ozs. cleaner to each gallon of water. Mop in usual manner. For combined Cleaning & Disinfecting use dilution 3 1/2 ozs. cleaner per gallon of water and follow directions below.

1. FOR CLEANING AREAS WHICH ARE PARTICULARLY SOILED: To clean and disinfect badly soiled areas, allow solution to remain in contact with surface for 3 to 5 minutes and agitate with a brush or mop. Keep mops clean and change practical. Mop or squeegee the dirty solution mop water as often as necessary.

2. MOPPING: Work large areas allowing the solution to remain on the floor as long as from the floor.

3. SPRAY METHOD: Spray in large areas and allow the solution to remain on surface for a few minutes before removing with squeegee or preferably a wet mop wrung out in clear water or use a wet vacuum pickup.

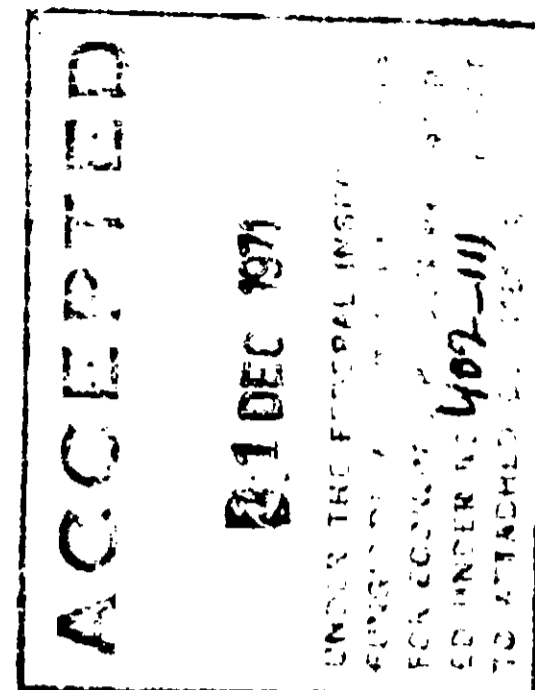
4. SPONGING AND WIPING: For removing grime from such surfaces as furniture, painted walls, automobiles, metal cabinets and similar surfaces. On surfaces like walls, start at bottom, work towards top, cover small areas at a time.

5. FOR CLEANING TOOLS AND INDUSTRIAL USE: Soak objects to be cleaned in solution. Allow to soak for ten minutes and then wipe clean.

6. RINSING: If surface after cleaning is streaked, simply rinse with clear water.

7. DISINFECTING PURPOSE: Sick rooms, the disinfection of clothes, towels, linens and such areas as lavatories, restaurants, swimming pool surfaces during periodic cleaning are easily disinfected. Follow directions given in paragraphs 1 and 2.

8. FOR HOSPITALS: FOR GERMICIDAL CLEANING AND DEODORIZING: Floors, Dishes, and Utensils (rinse in hot water after washing), Walls, Furniture, Food and Linen Carts, Garbage Cans. Use 3 1/2 ozs. per gallon of water. Rinse all food contact surfaces with potable water before reuse.



402-111

BETA-PHENE

DISINFECTANT — CLEANER

ACTIVE INGREDIENTS: 29%
Soap 14%, Isopropanol 7.5%, 4-chloro-2-phenylphenol 2.9%,
P-Tert.-Amylphenol 2%, o-chloro-2-phenylphenol 1.1%,
Orthophenylphenol 1%, Tetrasodium Salt of Ethylenediamine
Tetracetic Acid .5%
INERT INGREDIENTS: 71%

THIS PRODUCT CONTAINS SODIUM NITRITE

AVOID BREATHENING SPRAY MIST

CAUTION: KEEP OUT OF REACH OF CHILDREN

SEE BACK PANEL FOR ADDITIONAL CAUTION

DO NOT CONTAMINATE FOOD OR FEED

EPA REG. NO. 402-111

NET CONTENTS _____ GAL.

HILL MANUFACTURING CO., ATLANTA, GA.

NOTE: Due to the concentrated nature of the product, some color change may occur after container has been opened. This, in no way, affects its performance. **WHEN NOT IN USE,** keep container closed tightly in cool place. Do not store near steam pipes, radiators, etc., as contents may be affected by excessive heat.

A multiple acting cleaner, combining **DISINFECTING, DEODORIZING and SANITIZING.** When added to water, makes an efficient and fast-acting cleaning and disinfecting (or sanitizing) solution non-injurious to all surfaces not harmed by water. Loosens dirt and keeps it in suspension until wiped away. One application is sufficient to clean, disinfect and/or sanitize. Contains a powerful disinfecting agent. Proper use reduces the hazard of infection by Dust Borne Bacteria on contaminated surfaces and articles.

CAUTION: Harmful if swallowed. Avoid getting in eyes, in case of contact, wash thoroughly with water. Skin contact should be avoided. If spilled on skin, wash well with soap and water. If irritation persists, get medical attention. **DILUTE SOLUTIONS:** Contact with eyes or skin contact should be avoided, particularly by those persons with skin allergies. If stinging is felt, flood eyes with water; wash skin with soap and water and apply appropriate emollient. Persons with allergic conditions should wear rubber or plastic gloves.

CAUTION:

KEEP OUT OF REACH OF CHILDREN.

Made especially for Industrial and Institutional use.

NET CONTENTS _____ GAL.