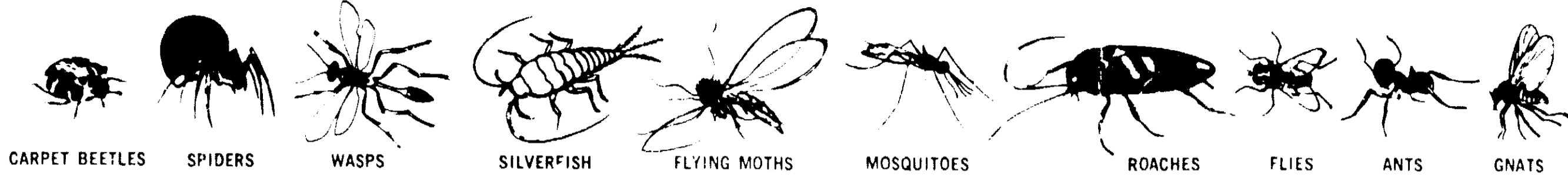


[334-416]

Kills



DESCRIPTION

An effective, fast acting aerosol insecticide for the control of roaches, flies, mosquitoes, wasps and other specified insects found in institutions and commercial buildings.

Ideal for Bakeries, Bottling Plants, Cafeterias, Canneries, Food Processing Plants, Food Markets, Hospitals, Hotels, Kitchens, Locker Rooms, Restaurants, Stores, Taverns, Washrooms.

WARNING: Contents under pressure. Do not puncture. Do not use or store near heat or open flame. Exposure to temperatures above 130 F may cause bursting. Never throw container into fire or incinerator.

CAUTION:

Keep spray in constant motion, at least 36 inches away from walls, fabrics, furniture, floors, plastics, etc. Spraying closer may cause stains or may damage certain floors of plastics. Food should be removed or covered during treatment. All food processing surfaces should be covered during treatment or thoroughly cleaned before using. When using in food processing areas, apply when plant is not in operation.

For eye contact, flush with copious amounts of water. If irritation persists, consult Physician. For best results, an operating temperature of 70-75 F. is recommended. Do not expose can to temperature higher than 120 F. Cover unprotected food-stuffs and eating utensils to protect them from spray and fallen insects. Remove pets, birds, and cover fish aquariums before spraying.

Discard empty container in safe place. Do not incinerate or puncture can.

E.P.A. Reg. No. 334-416AA
EPA Est. 334-IL-2

MANUFACTURED BY



DIRECTIONS

Direct spray discharge away from you. Press valve to release insecticide. Hold dispenser at least 2 feet from objects for surface spray use. **FLIES, MOSQUITOES, GNATS, WASPS, HORNETS, and SMALL FLYING MOTHS:** Close doors, windows and other openings. Press valve and direct aerosol mist to all parts of area being treated, spraying for 4 to 6 seconds per 1,000 cubic feet. Keep area closed for at least 15 minutes. Sweep up and destroy fallen insects. Repeat treatment as necessary.

Do not remain in treated areas and ventilate the area after treatment is completed.

ROACHES, SILVERFISH, SPIDERS, SCORPIONS: Spray directly into cracks, drawers, cupboards and other secluded places. Direct aerosol spray at insects when they appear. Repeat treatments as required to prevent infestations.

CARPET BEETLES: Hit these bugs directly with spray on sections of floor, baseboards, shelves and carpets. Repeat spraying at frequent intervals.

ANTS: Spray where insects are located and directly on insects if possible. Spray ant trails and places where ants enter premises.

BEDBUGS: Spray baseboards, mouldings, floor boards. Spray mattresses, paying particular attention to seams and tufts. Take bed apart and spray all joints. Repeat procedure regularly.

FLEAS: Spray floors, floor coverings and sleeping quarters of pet. Repeat as often as necessary. Do not spray directly on pet.

ACTIVE INGREDIENTS	10.00%
Pyrethrins	.30%
Piperonyl Butoxide Technical	.60%
N-Octyl Bicycloheptene Dicarboximide	1.00%
Petroleum Distillates	8.10%
INERT INGREDIENTS	90.00%
*Consists of 0.48% (butylcarbityl) (6-propylpiperonyl) ether and 0.12% related compounds.	

225

INSECT KILLER

KILLS: Flies, Roaches, Small Flying Moths, Mosquitoes, Ants, Gnats, Bedbugs and Silverfish.

Net Wt. 24oz. (1lb. 8oz.)

CAUTION

KEEP OUT OF REACH OF CHILDREN
CONTENTS UNDER PRESSURE
SEE BACK PANEL FOR FURTHER PRECAUTIONS.

JUN 03 1975

CHICAGO ILLINOIS 60609