

CODE
2875

NET WEIGHT
50 LBS.

COPPER 5 KOLOTM LEAD ARSENATE 15 DUST

FUNGICIDE-INSECTICIDE

DIRECTIONS FOR USE

This material is for use in dust applications on sour cherries for the control of leaf spot, brown rot, curculio and cherry fruit fly.

Usually applications of this material are made when the shucks are half off and again in five to seven days. Where curculio is especially troublesome an additional application may be desirable a week later. In areas where cherry fruit fly needs to be combatted, an application is usually recommended when Early Richmond fruits first show red followed by 1 to 2 additional applications at weekly intervals, or as long as fruit flies remain active.

Applications should be made at the rate of 35 to 75 pounds per acre, depending upon the size of the trees.

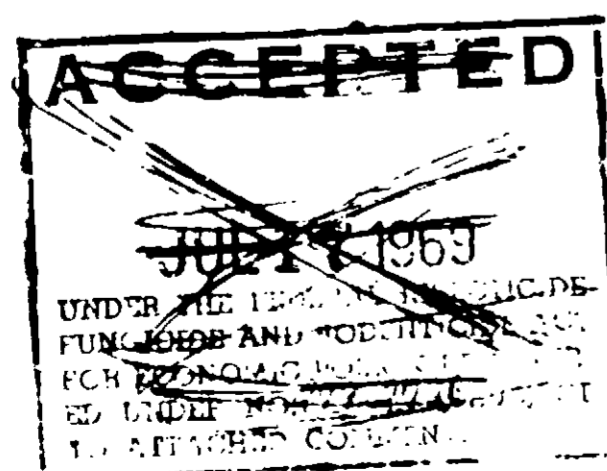
Do not apply within 14 days of harvest on sour cherries intended for processing, or within 30 days of harvest on sour cherries intended for the fresh market.

Applications of dusting and spraying materials containing sulfur should not be made just prior to or during periods of excessively high summer temperatures.

Do not use this material on sweet cherries.

Do not graze livestock on treated areas.

069



USDA REG. NO. 279-2726

ACTIVE INGREDIENTS

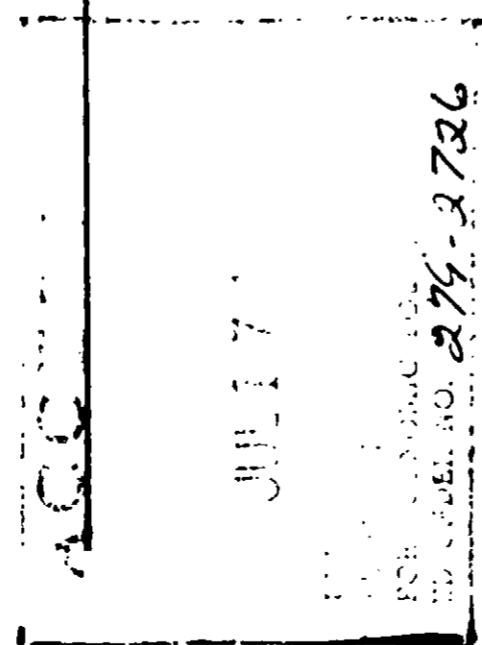
Sulfur	30.0%
Standard Lead Arsenate	15.0%
Copper expressed as metallic	5.0%
INERT INGREDIENTS	
	50.0%

100.0%	
Arsenic expressed as metallic	2.92%
Arsenic in water soluble form expressed as metallic	0.50%
Lead expressed as metallic	5.70%

*The Copper is in the form of Basic Copper Sulfate

WARNING
KEEP OUT OF REACH OF CHILDREN.

May be fatal if swallowed! Avoid contact with skin, eyes or clothing. Wash thoroughly after using. Avoid breathing dust. Avoid contamination of feed and foodstuffs.



This product contains Bentonite Sulfur.

Bentonite sulfur is made by the absorption of fused sulfur into bentonite in the proportions of thirty parts sulfur and seventy parts bentonite. A portion of the sulfur particles are very minute, some of them colloidal. The process of manufacture and the character of the sulfur particles impart to the product distinctive properties with respect to toxicity to certain fungi, persistence on plants, suspensibility in spray tank and safety to host plants.

WARNING - POISON

This package contains ARSENIC or combinations thereof for agricultural purposes only. Must not be kept or used in a room where food is being manufactured or prepared or where powdered food is stored.

USAGE CAUTIONS

This product is toxic to wildlife. Keep out of any body of water. Birds feeding on treated areas may be killed. Apply this product only as specified on this label.

This product is highly toxic to bees exposed to direct treatment or residues on crops. Protective information may be obtained from your Cooperative Agricultural Extension Service.

DISPOSE OF WASTES by burying in non crop lands away from water supplies. Container should be disposed of by burying with wastes or by burning. Keep out of smoke.

Printed in U. S. A.