



Code 30374

Net Weight  
Pounds

# Ethion 25 Spray

## Insecticide-Miticide

For Agricultural or Commercial Use Only

EPA Reg. No. 279-1401 ZA EPA Est. 279-

Active Ingredient	By Wt.
Ethion (0,0,0,0-Tetraethyl S,S-methylene bisphosphorodithioate)	25.00%
Inert ingredients	75.00%
	100.00%

Kolospray, FMC Trademark

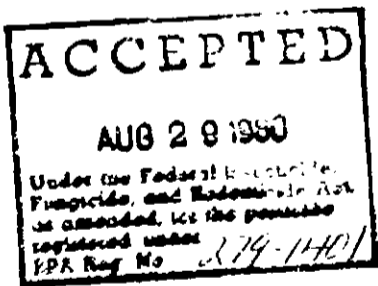
**KEEP OUT OF REACH OF CHILDREN**

### WARNING

For Emergency Assistance Call 716-735-3765

See Other Panels for Additional Precautionary Information

FMC Corporation  
Agricultural Chemical Group  
2000 Market Street  
Philadelphia, Pennsylvania 19103



### PRECAUTIONARY STATEMENTS

#### Hazards to Humans (& Domestic Animals)

##### Warning

May be fatal if swallowed or absorbed through skin. Do not breathe vapor, dust or spray mist. Avoid contact with skin, eyes, and clothing. Wash thoroughly after handling.

#### Environmental Hazards

This product is toxic to fish and wildlife. Keep out of lakes, ponds and streams. Do not contaminate water by cleaning of equipment or disposal of wastes. Do not apply when weather conditions favor drift from areas treated. Do not apply where runoff is likely to occur. Apply this product only as specified on this label.

This product is toxic to bees and should not be applied when bees are actively visiting the area.

Use of this material in a manner or at a time other than in accordance with label directions may produce animal, crop or plant injury, excessive residues or other undesirable results.

#### DIRECTIONS FOR USE

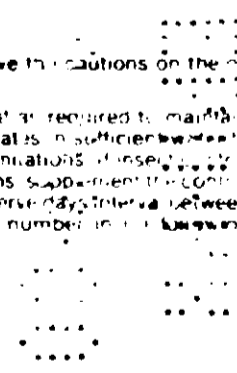
It is a violation of Federal law to use this product in a manner inconsistent with its labeling.

#### Storage and Disposal

Do not contaminate water, food or feed by storage or disposal. Open dumping is prohibited. Pesticide spray mixture or residue that cannot be used or chemically reprocessed should be disposed of in a landfill approved for pesticides or buried in a safe place away from water supplies. Dispose of container in an incinerator or landfill approved for pesticide containers or bury in a safe place. Consult Federal, State or local disposal authorities for approved alternative procedures.

When used in combination with oil, observe the cautions on the oil label.

Apply when insects first appear and repeat as required to maintain control. Use the following recommended rates in sufficient water to thoroughly cover the acre. Observe use limitations if insecticide is required beyond the following use patterns. Supplement the control program with other suitable pesticides. Observe days interval between last application and harvest indicated by number in the following crop.



**Almonds (30):** Brown Mite, European Red Mite, Twospotted Spider Mite—Use 1 pound per 100 gallons of water (5 to 8 pounds per acre). Do not make more than one application during fruiting period.

**Apples:** Codling Moth—Use 2 pounds per 100 gallons of water (16 to 20 pounds per acre). Make first application about 7 to 10 days after petal-fall and repeat at succeeding cover sprays. When making 4 applications during fruiting period, do not apply within 60 days of harvest; when making 2 applications during fruiting period, do not apply within 40 days of harvest. Mites (Brown, European Red, Apple Rust, Twospotted Spider)—Use 1 pound per 100 gallons of water (8 to 10 pounds per acre). When making 4 applications during fruiting period, do not apply within 40 days of harvest; when making 3 applications, do not apply within 30 days of harvest; and when making 2 applications, do not apply within 20 days of harvest. Caution: Do not use on Astrachen, Duchess, Margaret Pratt, Melba, Wealthy, Williams, Red (Red Williams), Yellow Transparent or any varieties maturing before early McIntosh apples as injury is likely to occur.

**Beans:** Succulent (2), Dry (2): Beanleaf Beetle, Mexican Bean Beetle, Twospotted Spider Mite—Use 1 to 2 pounds per acre. Potato Leafhopper—Use 2 pounds per acre. Do not feed treated bean foliage to livestock. Beans: Succulent (4), Dry (4): Lygus Bug—Use 4 pounds per acre. Do not feed treated bean foliage to livestock. Beans: Seed Treatment, Seed Corn Maggot—Use 4 ounces per 100 pounds of seed. Mix and apply to seed as a slurry treatment. Combine with suitable fungicide for seed treatment if desired. Do not use treated seed for food, feed or oil purposes.

**Cherries:** Brown Mite, European Red Mite, McDaniel Spider Mite, Twospotted Spider Mite—Use 1 pound per 100 gallons of water (6 to 10 pounds per acre). Use as a post-harvest treatment only.

**Chestnuts, Filberts, Pecans:** Brown Mite, European Red Mite, Twospotted Spider Mite—Use 10 pounds per acre in sufficient water to cover. Do not make more than 2 applications during fruiting period. On Chestnuts and Pecans, do not apply after nut-split (October), do not apply when nut is visible. Do not graze livestock in treated groves.

**Cotton:** Cotton Leafworm—Use 1 pound in sufficient water to treat one acre. Do not apply after bolls open. Do not graze dairy or meat animals in treated fields. Caution: Workers entering treated fields within 24 hours should wear protective clothing.

**Cucumbers (0), Peppers (0), Pimientos (0), Summer Squash (0), Serpentine Leafminer, Twospotted Spider Mite—Use 2 pounds per acre.**

**Eggplants (0):** Twospotted Spider Mite—Use 2 pounds per acre.

**Grapes (30):** Grape Leafhopper, Twospotted Spider Mite, Williams Mite—Use 1 pound per 100 gallons of water (5 to 5 pounds per acre).

Make no more than two applications during the fruiting period. Do not apply to Salvador, Muscat and Fehn-Szabo varieties as injury may

**Leeks, Onions, Set Seed Treatment:** Onion Maggot—Treat seed according to the number of feet to be planted per acre. On up and so on mix 4 pounds with the amount of seed to be planted in one acre of rows 12 inches apart. Mix 3 pounds with the amount of seed to be planted in 1 acre of rows 18 inches apart and 2 pounds on seeds to be planted in 1 acre of rows 24 inches apart. On muck or heavy soils increase dosage by 50 to 100 percent.

**Melons (0):** Melon Leafminer, Serpentine Leafminer, Twospotted Spider Mite - Use 2 pounds per acre. Melon Leafhopper - Use 3 to 4 pounds per acre. **For use in California Only:** Petrobia Mite - Use 1 to 1 pound actual Ethion in sufficient water to thoroughly cover one acre (2 to 4 lbs). Use a minimum of 10 gallons of water per acre.

**Nectarines (30), Peaches (30):** Do not apply more than twice during the fruiting period. Brown Almond Mite, Clover Mite, European Red Mite, Twospotted Spider Mite - Use 1 pound per 100 gallons of water (5 to 7 pounds per acre). **Nectarines only:** Thrips - Use 2 pounds plus 5 pounds of Kolospray® per 100 gallons of water. (6 pounds of Ethion 25 Spray, plus 15 pounds of Kolospray per acre.)

**Valencia Oranges (0), Lemons (21), Grapefruit (0):** Citrus Red Mite, Citrus Thrip, Citrus Rust Mite - Use 1 to 2 pounds plus 1 to 2 quarts of light medium oil per 100 gallons of water. Apply in sufficient water to thoroughly cover one acre. (With ground application equipment on mature trees, apply a minimum of 750 gallons, on small trees a minimum of 100 gallons of spray per acre.) Do not exceed 20 pounds of Ethion 25 Spray nor 5 gallons of light medium oil per acre. If additional applications are required on Valencia Oranges and Grapefruit, do not apply within 90 days of the preceding treatment. Do not apply to Lemons more than once per season.

**Naval Oranges (0), Tangelos (0), Tangerines (0):** Citrus Red Mite, Citrus Thrip, Citrus Rust Mite - Use 1 to 2 pounds per 100 gallons of water. Apply in sufficient water to thoroughly cover one acre. (With ground application equipment on mature trees, apply a minimum of 750 gallons, on small trees, a minimum of 100 gallons of spray per acre.) Do not exceed 20 pounds of Ethion 25 Spray per acre. If additional applications are required, do not apply within 90 days of the preceding treatment. Do not apply to Tangerines more than twice per crop.

**All Citrus Crops except Citrus Citron and Kumquat: For Use in Arizona and California Only:** Citrus Thrip - Use at the rate of 10 to 12 pounds in sufficient water to treat one acre. Apply when thrips first appear and before they exceed 2 to 3 thrips per leaf. **Lemons or Limes:** Do not apply more than once per season nor within 21 days of harvest. On other citrus fruits, do not apply within 90 days of previous application.

**Ornamentals; Out-of-Doors:** Twospotted Spider Mite - Use 1 pound per 100 gallons of water. Do not apply to Anderson Yew.

**Pears (50):** Codling Moth - Use 2 pounds per 100 gallons of water (5 to 15 pounds per acre). Do not make more than 3 applications after the first cover spray. Apply at petal-fall and in those cover sprays required to maintain control. Pear Psyllid - Use 1 to 2 pounds per 100 gallons of water (8 to 10 pounds per acre). Do not make more than 3 applications after first cover spray. **Pears (30):** European Red Mite, Twospotted Spider Mite, Brown Mite - Use 1 pound per 100 gallons of water (5 to 7 pounds per acre). **Pear Rust Mite - Use 1 pound per 100 gallons of water (8 to 10 pounds per acre).**

**Plums (21), Prunes (21):** Brown Mite, European Red Mite, Twospotted Spider Mite - Use 1 pound per 100 gallons of water (5 to 7 pounds per acre). Make no more than 3 applications during fruiting period. **Plums (45), Prunes (45):** European Fruit Lecanium Scale - Use 1 pound per 100 gallons of water (7 to 10 pounds per acre). Do not apply more than twice during the fruiting period.

**Strawberries (2):** Strawberry Leafroller - Use 4 pounds per acre. Twospotted Spider Mite - Use 2 pounds per acre.

**Tomatoes (2):** Tropical Mite, Twospotted Spider Mite, Leafminer - Use 2 pounds per acre. Spray thoroughly both the upper and lower leaf surfaces.

**Walnuts: California only:** European Red Mite, Twospotted Spider Mite, Walnut Aphid, Walnut Husk Fly - Use 6 to 10 pounds per acre in sufficient water to cover. Do not make more than 2 applications during the fruiting period. Do not apply after husk-split. Do not graze livestock in treated groves within 21 days of treatment.

## Dealers Should Sell in Original Packages Only.

**Terms of Sale or Use:** On purchase of this product buyer and user agree to the following conditions:

**Warranty:** FMC makes no warranty, expressed or implied, concerning the use of this product other than indicated on the label. Except as so warranted, the product is sold as is. Buyer and user assume all risk of use and/or handling and/or storage of this material when such use and/or handling and/or storage is contrary to label instructions.

**Directions and Recommendations:** Follow directions carefully. Timing and method of application, weather and crop conditions, mixture with other chemicals not specifically recommended and other influencing factors in the use of this product are beyond the control of the seller and are assumed by buyer at his own risk.

**Use of Product:** FMC's recommendations for the use of this product are based upon tests believed to be reliable. The use of this product being beyond the control of the manufacturer, no guarantee, expressed or implied, is made as to the effects of such or the results to be obtained if not used in accordance with directions or established safe practice.

**Damages:** Buyer's or user's exclusive remedy for damages for breach of warranty or negligence shall be limited to direct damages not exceeding the purchase price paid and shall not include incidental or consequential damages.

(30374-7 80-PA)

