



# ORTHO

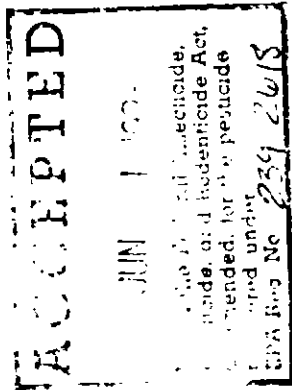
Treats  
3,200 Sq. Ft.

# Atrazine PLUS™ St. Augustine Lawn Weeder

## FOR HOME USE ONLY

- For use on established St. Augustinegrass lawns (including Floratam, Raleigh, Seville, Floratine, Floralawn, Gulf Star, and Bitterblue), Centipede and Zoysia lawns.
- Also kills weeds in DORMANT Bermudagrass lawns.
- Kills lawn weeds: Pennywort (Dollarweed), Lawn Burweed, Florida Betony, Florida Pusley, Chickweeds, Henbit, Oxalis and many other broadleaf weeds
- Prevents lawn weeds Annual Crabgrass, Annual Bluegrass (Poa annua), Spotted Spurge, Annual Sedges, and many other broadleaf weeds and grasses.

SHAKE WELL BEFORE USE



- Contains SUPERTONE™ Wetting Agent to Improve Weed Control

Controls  
DOLLARWEED

**ACTIVE INGREDIENT** BY WT.  
 • Atrazine ..... 14.0%  
**INERT INGREDIENTS** ..... 86.0%  
 \* Equivalent to 13.30% (2-chloro-4-ethylamino-6-isopropylamino-S-triazine) and 0.70% related compounds.  
 Equivalent to 1.2 lbs. Atrazine Application.

Keep out of reach of children.

## CAUTION

See inside for additional  
precautionary statements.

## NET CONTENTS

**HOW TO APPLY:** For best results, use an ORTHO Weed Killer™ Sprayer, ORTHO DIAL™ n SPRAY®, or ORTHO SPRAY-ETTER™ Hose-End Sprayer or tank-type sprayer. Refer to table for recommended dilution. If lawn needs watering, water thoroughly before application. Do not water for 24 hours after application. Rainfall or watering within 2 to 3 days of application to existing weeds may decrease the effectiveness on emerged weeds. However, for control of weeds from seeds, rainfall or watering is necessary within 7 to 10 days after treatment. Spray entire lawn, wetting weeds and lawn grasses. Do not exceed recommended rate. Spray when air is calm to avoid spray drift that might injure desirable ornamental plants.

### DILUTION TABLE

| Area to Treat | Water to Use | Amount of ORTHO Atrazine PLUS™ St. Augustine Lawn Weeder to Use |
|---------------|--------------|---|
| 200 sq. ft.   | 1 gallon     | 2 Tablespoonfuls (1 oz.)  |
| 800 sq. ft.   | 4 gallons    | 8 Tablespoonfuls (4 oz.)  |
| 1,200 sq. ft. | 6 gallons    | 12 Tablespoonfuls (6 oz.)                                       |

**NOTE:** For use in ORTHO DIAL™ n SPRAY Hose-End Sprayer, this product must be diluted as follows: Add 8 oz. (16 Tablespoonfuls or 1 cup) product to sprayer jar, fill with water and mix thoroughly. Set dial on sprayer to 4 oz. A sprayer full (one quart mixture) should be evenly applied to 1600 sq. ft. (40' x 40') of lawn.

**IMPORTANT NOTES:** ORTHO Atrazine PLUS™ St. Augustine Lawn Weeder is primarily designed for use on St. Augustine, Zoysia, and Centipedegrass lawns. However, it can also be applied to Dormant Bermudagrass lawns (including hybrids). Application to Bermudagrass lawns which still have green stems even though the leaves appear brown (which occurs usually following the first frost) can result in turf injury. Delay application to mid to late winter.

Do not use on Bluegrass, Fescue, Bent, Bahia, Ryegrass, Bermudagrass (see above exception), or Dichondra lawns. Delay application to newly sodded lawns until stolons are well rooted and new sprigs or plugs should be actively growing before application to reduce weed competition. On newly seeded Centipede, wait until the new grass has been mowed once before applying. Delay reseeding Centipede or replanting sprigs or plugs of these grasses one month after application. Seeding of other types of grasses may require several months delay. On newly sprigged turfgrass, temporary slowing of growth and yellowing may occur following application. Do not use north of North Carolina (except may be used in Virginia Coastal Plains) or west of the high rainfall areas of eastern Oklahoma and eastern Texas (roughly a line from Dallas/Ft. Worth down to Houston, Texas). Do not use on muck or alkaline soils.

**CAUTION:** Do not apply within the active root zone of vegetables or desirable ornamental plants such as Camellias, Azaleas, Boxwoods, etc. However atrazine treatments should not normally cause injury to medium or large shrubs or trees in the landscape. Do not plant any crop (flower or vegetable gardens) in treated areas for 18 months or injury may result.

### STORAGE AND DISPOSAL

**STORAGE:** Keep pesticide in original container. Do not store near feed, foodstuffs, fertilizers, seeds, insecticides, or fungicides. Do not put concentrate or dilute into food or drink containers. Store in a cool, dry place, preferably in a locked storage area. Do not store diluted spray.

**DISPOSAL: PRODUCT** — Partially filled bottle can be disposed of by securely wrapping original container in several layers of newspaper and discarding in trash. **CONTAINER** — Do not reuse empty bottle. Rinse thoroughly before discarding in trash.

**NOTICE:** Buyer assumes all responsibility for safety and use not in accordance with directions.

Manufactured for  
**Chevron Chemical Company** © 1990

Ortho Consumer Products Division

P.O. Box 5047

San Ramon, CA 94583-0947

Form RC 279-D Product 5639

EPA Reg. No. 239-2618

EPA Est. 34704 NB 02

Made in U.S.A.

**PRECAUTIONARY STATEMENTS  
HAZARDS TO HUMANS & DOMESTIC ANIMALS**

**CAUTION:** Harmful if swallowed. Causes eye irritation. Avoid contact with eyes or clothing. Wash thoroughly with soap and water after handling. Remove contaminated clothing and wash before reuse.

**STATEMENT OF PRACTICAL TREATMENT:** If swallowed; call a physician or Poison Control Center. Drink 1 or 2 glasses of water and induce vomiting by touching back of throat with finger. Do not induce vomiting or give anything by mouth to an unconscious person. If in eyes; flush eyes with fresh water for 15 minutes. Call a physician if irritation persists.

**Note to Physicians:** Emergency Information — call 1-800-457-2022.

**ENVIRONMENTAL HAZARDS:** This pesticide is toxic to aquatic invertebrates. Do not apply directly to water or wetlands. Runoff and drift from treated areas may be hazardous to aquatic organisms in neighboring areas. Do not contaminate water when disposing of equipment washwaters.

**DIRECTIONS FOR USE:** It is a violation of Federal law to use this product in a manner inconsistent with its labeling.

**READ ENTIRE LABEL, USE STRICTLY IN ACCORDANCE WITH LABEL PRECAUTIONARY STATEMENTS AND DIRECTIONS.**

ORTHO Atrazine PLUS™ St. Augustine Lawn Weeder is a pre- and post-emergent lawn weed killer which controls both broadleaf and grassy weeds. It kills many of the weeds listed below on contact if present in the lawn and also prevents seeds of listed weeds from sprouting if used before the seeds germinate. Contains SUPERTONE™, a special additive to improve weed control by making the spray spread more evenly and adhere better to smooth, hairy, or waxy weed leaves.

**WHEN TO APPLY**

For best results spring applications will control those warm season or summer weeds such as Pennywort (Dollarweed), Dichondra, Florida Pusley, Spurge, Yellow Woodsorrel, or Oxalis. To control cool season or winter weeds such as Lawn Burweed (Spurweed), Florida Betony, Henbit, Chickweed, Cudweed, False Dandelion, Black Medic, Knotweed, Purslane, Red Sorrel, Burning Nettle, etc., a fall application will give good control, but a repeat application in mid-winter is needed to control late emerging Lawn Burweed (Spurweed) and Florida Betony. To prevent Annual Grasses, Sedges, and Spotted Spurge, apply in late winter to early spring before these weeds germinate. A second application in mid-spring or early summer will extend control of Annual Grasses and Spotted Spurge.

**WEEDS CONTROLLED BY PRE-EMERGENCE OR POST-EMERGENCE(\*) TREATMENTS**

The weeds listed below are more easily controlled if this product is applied before their seeds germinate but good control can still be obtained to most of these weeds (see asterisk) if applied to young, rapidly growing weeds. Mature listed weeds may require a follow-up treatment within two months for good control.

**Note:** The same weed species may be listed below in two places if it is called by more than one common name.

- |                       |                   |                      |
|-----------------------|-------------------|----------------------|
| *Annual Crabgrass     | *Florida Pusley   | *Pigweed             |
| *Annual Bluegrass     | *Fragrant Cudweed | *Poa Annua           |
| *Annual Morning Glory | *Giant Foxtail    | *Plantains           |
| *Annual Sedges        | *Green Foxtail    | *Purslane            |
| *Barnyardgrass        | *Groundcherry     | *Ragweed             |
| *Black Medic          | *Harry Crabgrass  | *Red Sorrel          |
| *Blue Toadflax        | *Henbit           | *Rescuegrass         |
| *Buckhorn             | *Hop Clover       | *Sheep Sorrel        |
| *Bull Paspalum        | *Jimsonweed       | *Sheepspurge         |
| *Bur Clover           | *Knotweed         | *Sicklepod           |
| *Burning Nettle       | *Kochia           | *Sowthistle          |
| *Butterweed           | *Lambquarters     | *Spotted Spurge      |
| *Carolina Geranium    | *Large Crabgrass  | *Spurges             |
| *Clovers              | *Lawn Burweed     | *Spurweed            |
| *Cocklebur            | *Lespedeza        | *Stinging Nettle     |
| *Common Chickweed     | *Matchweed        | *Swinegrass          |
| *Corn Speedwell       | *Mat Lippin       | *Valerian            |
| *Crabgrass            | *Mossy Chickweed  | *Venus Looking Glass |
| *Creeping Charlie     | *Mustards         | *Vernonia            |
| *Dandelion            | *Narrowleaf Weeds | *Watergrass          |
| *Dichondra            | *Nightshade       | *Wild Oats           |
| *Docks                | *Oxalis           | *Winter Mint         |
| *Dollarweed           | *Parsley Plant    | *Witchgrass          |
| *Evening Primrose     | *Pennywort        | *Yellow Foxtail      |
| *False Dandelion      | *Peppercorn       | *Yellow Woodsorrel   |
| *Florida Betony       |                   |                      |

\*Can be controlled by a pre-emergence or post-emergence treatment.



**ORTHO**

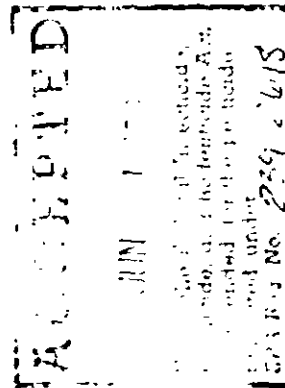
Treats  
3,200 Sq. Ft.

**Atrazine PLUS™  
St. Augustine  
Lawn Weeder**

**FOR HOME USE ONLY**

- For use on established St. Augustinegrass lawns (including Floratam, Raleigh, Seville, Floratine, Floralawn, Gulf Star and Bitterblue), Centipede and Zoysia lawns
- Also kills weeds in DORMANT Bermudagrass lawns.
- Kills lawn weeds Pennywort (Dollarweed), Lawn Burweed, Florida Betony, Florida Pusley, Chickweeds, Henbit, Oxalis, and many other broadleaf weeds
- Prevents lawn weeds Annual Crabgrass, Annual Bluegrass (Poa annua), Spotted Spurge, Annual Sedges, and many other broadleaf weeds and grasses.

**SHAKE WELL BEFORE USE**



• Contains SUPERTONE™  
Wetting Agent to  
Improve Weed Control

Controls  
DOLLARWEED

**ACTIVE INGREDIENT**

Atrazine . . . . . 14.0

**INERT INGREDIENTS**

. . . . . 86.0

\* Equivalent to 13.30% (2-chloro-4-ethylamino-6-isopropylamin

S-triazine) and 0.70% related compounds\*

Equivalent to 1.2 lbs. Atrazine/gallon.

Keep out of reach of children.

**CAUTION**

See inside for additional  
precautionary statements.

**NET CONTENTS**

**BEST AVAILABLE COPY**