

5/15/97

PM 04

239-2513

P7 1/6

Please read instructions on reverse before completing form.

Form Approved. OMB No. 2070-0060. Approval expires 05-31-98



United States
Environmental Protection Agency
Washington, DC 20460

<input type="checkbox"/>	Registration
<input type="checkbox"/>	Amendment
<input checked="" type="checkbox"/>	Other

OPP Identifier Number

251543

Application for Pesticide - Section I

1. Company/Product Number 239-2513	2. EPA Product Manager Dennis Edwards, Jr.	3. Proposed Classification <input checked="" type="checkbox"/> None <input type="checkbox"/> Restricted
4. Company/Product (Name) ORTHO-KLOR Soil Insect & Termite Killer	PM# 19	
5. Name and Address of Applicant (Include ZIP Code) The Solaris Group Of Monsanto P.O. Box 5006 San Ramon, Ca 94593-0906 <input type="checkbox"/> Check if this is a new address	6. Expedited Review. In accordance with FIFRA Section 3(c)(3) (b)(i), my product is similar or identical in composition and labeling to: EPA Reg. No. _____ Product Name _____	

Section - II

<input type="checkbox"/> Amendment - Explain below.	<input checked="" type="checkbox"/> Final printed labels in response to Agency letter dated <u>10/4/96</u>
<input type="checkbox"/> Resubmission in response to Agency letter dated _____	<input type="checkbox"/> "Me Too" Application.
<input type="checkbox"/> Notification - Explain below.	<input type="checkbox"/> Other - Explain below.

Explanation: Use additional page(s) if necessary. (For section I and Section II.)

NOTIFICATION: Submit finished labeling in response to EPA Acceptance of Oct. 4, 1996 ORTHO Borer & Leaf Miner Spray (Form 9-995-02) and HomeDefense Ortho-Klor Insect & Termite Killer (Form 9-817-04).

NOTIFICATION
MAY 15 1997

Section - III

1. Material This Product Will Be Packaged In:				2. Type of Container	
Child-Resistant Packaging <input type="checkbox"/> Yes* <input type="checkbox"/> No	Unit Packaging <input type="checkbox"/> Yes <input type="checkbox"/> No	Water Soluble Packaging <input type="checkbox"/> Yes <input type="checkbox"/> No	Metal Plastic Glass Paper Other (Specify) _____		
* Certification must be submitted		If "Yes" Unit Packaging wgt. No. per container	If "Yes" Package wgt. No. per container		
3. Location of Net Contents Information <input type="checkbox"/> Label <input type="checkbox"/> Container		4. Size(s) Retail Container		5. Location of Label Directions <input type="checkbox"/> On Label <input type="checkbox"/> On Labeling accompanying product	
6. Manner in Which Label is Affixed to Product <input type="checkbox"/> Lithograph <input type="checkbox"/> Paper glued <input type="checkbox"/> Stenciled			<input type="checkbox"/> Other _____		

Section - IV

1. Contact Point (Complete items directly below for identification of individual to be contacted, if necessary, to process this application.)		
Name F. X. Kamienski	Title Registration Specialist	Telephone No. (Include Area Code) (510) 355-3335
Certification I certify that the statements I have made on this form and all attachments thereto are true, accurate and complete. I acknowledge that any knowingly false or misleading statement may be punishable by fine or imprisonment or both under applicable law.		6. Date Application Received (Stamp)
2. Signature FX Kamienski / ram	3. Title Registration Specialist	
4. Typed Name F. X. Kamienski	5. Date 04/18/97	

ORTHO®



Borer & Leaf Miner Spray

CONCENTRATE

Kills Pine Beetles, Bronze Birch & Peachtree Borers, and many other insects

Use on Shrubs & Trees



Active Ingredient
Chlorpyrifos (0,0-diethyl 0-(3,5,6-trichloro-2-pyridinyl)phosphorothioate) 12.5%
Inert Ingredients 87.4%
*This product contains aromatic petroleum solvent.

KEEP OUT OF REACH OF CHILDREN
WARNING See back panel booklet for additional precautionary statements.
NET CONTENTS 16 FL. OZ. (1 PT) 473 mL



ORTHO®

Borer & Leaf Miner Spray



FOR OUTDOOR HOME & GARDEN USE ONLY

An easy to apply product to control borers and leaf miners that attack ornamental plants, fruit trees, and shade trees. Peel open for use directions and further information

WARNING: Causes eye irritation. Harmful if swallowed. Do not get in eyes, on skin or clothing. Avoid breathing vapors and spray mist. Handle concentrate in ventilated area. Wash thoroughly after handling and before eating or smoking. Do not wear contaminated clothing or shoes. Keep away from food, feedstuffs and domestic water supplies.

Keep children and pets out of treated areas until these areas are dry.

SEE ADDITIONAL PRECAUTIONARY STATEMENTS AND DIRECTIONS INSIDE BOOKLET.

Medical Information call 1-800-454-2333
Product Information call 1-800-225-2833

©Trademark of Monsanto Company
©Monsanto Company 1996

Manufactured for
The SOLARIS Group of
Monsanto Company
P.O. Box 5008
San Ramon CA 94583-0608
Form 0-995-02
EPA Reg. No. 239-2513
EPA Est. 239-1A-3,
58996-MO-1A
Superscript is first letter
of lot number
Made in USA.



DIRECTIONS FOR USE

It is a violation of Federal law to use this product in a manner inconsistent with its labeling.

READ ENTIRE LABEL. USE STRICTLY IN ACCORDANCE WITH LABEL PRECAUTIONARY STATEMENTS AND DIRECTIONS.

tsp = teaspoon 1 fl oz = 2 Tbs SHAKE WELL
Tbs = Tablespoon 4 fl oz = 1/2 cup BEFORE USING

BORERS & LEAF MINERS ON TREES & SHRUBS

Application timing is important. Consult your County Cooperative Extension Agent for proper time to treat.

PESTS	TREES or SHRUBS	PRODUCT TO MEASURE WHEN TO APPLY
Beetles (Cottonwood Leaf, Elm Leaf, Flea, Willow Leaf)	Cottonwood, Elm, Willow	• 4 tsp/gal of water • Apply when pests appear • Thoroughly wet upper and lower leaf surfaces. • Reapply at 7 to 10 day intervals if needed.
Weevils (Black Vine, Yellow Poplar, Pine)	Rhododendron, Poplar, Pine	• 1 1/2 fl oz (3 Tbs)/gal of water • Spray trunks and lower limbs of trees and shrubs when adults begin to emerge.
Borers (Ash, Dogwood, Lesser Peachtree, Lilac, Oak, Rhododendron, Bronze Birch, Flatheaded Appletree, Locust, Red Oak)	Ash, Lilac, Oak, Dogwood, Rhododendron, Birch, Locust	• 1 1/2 fl oz (3 Tbs)/gal of water • Spray when leaf miners appear in early and Mid-May. (continued on next page)
Leaf miners	Elm, Birch, Locust	• 1 1/2 fl oz (3 Tbs)/gal of water • Spray when leaf miners appear in early and Mid-May. (continued on next page)

(continued)

PESTS	TREES or SHRUBS	PRODUCT TO MEASURE WHEN TO APPLY
Needleminers	Pine, Spruce	• 1 1/2 fl oz (3 Tbs)/gal of water
Beetles (Ambrosia, Black Turpentine, European Elm Bark, Japanese, June, Southern Pine, Spruce)	Elm, Pine, Spruce	• 10 1/2 fl oz (1 1/4 cups)/gal of water • Apply with tank sprayer only. • To prevent infestation, spray the tree trunk in early Spring. • To treat infested trees, spray the tree trunk before adult beetles begin to emerge. • Avoid contact with foliage to prevent leaf damage

Application timing is important. Consult your County Cooperative Extension Agent for proper time to treat.

PESTS	FRUIT TREES	PRODUCT TO MEASURE WHEN TO APPLY
Dogwood Borer	Apples • Wait 1 month after last application before harvesting fruit.	• 2 fl oz (4 Tbs)/gal of water • Soak tree trunks and the soil around the base of trees in the spring. • Apply up to 8 times per season. • Wait 3 weeks between treatments. (continued on next page)

(continued)

PESTS	FRUIT TREES	PRODUCT TO MEASURE WHEN TO APPLY
Borers (Lesser Peachtree, Great Peachtree, American Plum)	Sweet Cherries • Wait 1 week after application before harvesting fruit.	• 2 fl oz (4 Tbs)/gal of water • Spray trunks and lower limbs. Avoid contact with foliage to prevent leaf damage. Apply up to 3 times per season. • Apply second application 2 weeks after the first. • Make third application after harvest.
Borers (American Plum, Lesser Peachtree, Pacific Flatheaded, Peach Twig, Peachtree, Shot-hole)	Sour Cherries • Wait 2 weeks after application before harvesting fruit.	• 2 fl oz (4 Tbs)/gal of water • Spray tree trunks and lower limbs. • Apply up to 3 times per season.
Peachtree Borers	Nectarines, Peaches • Wait 2 weeks after application before harvesting fruit.	• 4 fl oz (8 Tbs)/gal of water • Spray bark from the ground up to the lower branches. • Do not spray fruit. • Make only 1 application per year.

Do not use inside dwellings.

STORAGE: Keep pesticide in original container. Do not put concentrate or dilute into food or drink containers. Avoid contamination of feed, foodstuffs and domestic water supplies. Store in a cool, dry place, preferably in a locked storage area. Do not store diluted spray. Store above freezing. Handle concentrate in a ventilated area. Keep container closed. **DISPOSAL:** PRODUCT - Partially filled bottle may be disposed of by securely wrapping original container in several layers of newspaper and discard in trash. **CONTAINER** - Do not reuse empty bottle. Rinse thoroughly before discarding in trash.

PRECAUTIONARY STATEMENTS

HAZARDS TO HUMANS & DOMESTIC ANIMALS

WARNING: Causes eye irritation. Harmful if swallowed. Do not get in eyes, on skin or clothing. Avoid breathing vapors and spray mist. Handle concentrate in ventilated area. Wash thoroughly after handling and before eating or smoking. Do not wear contaminated clothing or shoes. Keep away from food, feedstuffs and domestic water supplies.

Keep children and pets out of treated areas until these areas are dry.

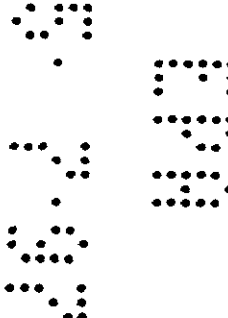
FIRST AID: IF SWALLOWED: DO NOT make person vomit. Call a doctor immediately. IF ON SKIN: In case of contact, remove contaminated clothing and immediately wash skin with soap and water. IF IN EYES: Flush eyes with plenty of water. Call a physician and get prompt medical attention. Note to Physicians: Emergency Information call 1-800-454-2333. This product contains an aromatic petroleum solvent and may present an aspiration problem. Chlorpyrifos is a cholinesterase inhibitor. It signs and symptoms of cholinesterase inhibition develop, atropine by injection is antidote. 2-PAM may also be given in conjunction with atropine, but should never be used alone. **ENVIRONMENTAL HAZARDS:** This product is toxic to fish, birds and other wildlife. Do not apply directly to water. Do not contaminate water by cleaning of equipment or disposal of wastes. **PHYSICAL OR CHEMICAL HAZARDS:** Do not use or store near heat or open flame. **NOTICE:** Buyer assumes all responsibility for safety and use not in accordance with directions.

Medical Information call 1-800-454-2333

Product Information call 1-800-225-2833

Manufactured for
The SOLARIS Group of Monsanto Company
P.O. Box 5008 San Ramon CA 94583-0608
Form 0-995-02
EPA Reg. No. 239-2513 EPA Est. 239-1A-3, 58996-MO-1A
Superscript is first letter of lot number Made in USA

NOTIFICATION
MAY 15 1997





Borer & Leaf Miner Spray

CONCENTRATE

Kills Pine Beetles, Bronze Birch & Peachtree Borers, and many other insects

Use on Shrubs & Trees

Active Ingredient
Chlorpyrifos (0,0-diethyl 0-(3,5,6-trichloro-2-pyridinyl)phosphorothioate) 12.6%
Inert Ingredients 87.4%
*This product contains aromatic petroleum solvent

WARNING See back panel booklet for additional precautionary statements.

NET CONTENTS 16 FL. OZ. (1 PT) 473 mL



Borer & Leaf Miner Spray

FOR OUTDOOR HOME & GARDEN USE ONLY

An easy to apply product to control borers and leaf miners that attack ornamental plants, fruit trees, and shade trees. Peel open for use directions and further information.

WARNING: Causes eye irritation. Harmful if swallowed. Do not get in eyes, on skin or clothing. Avoid breathing vapors and spray mist. Handle concentrate in ventilated area. Wash thoroughly after handling and before eating or smoking. Do not wear contaminated clothing or shoes. Keep away from food, feedstuffs and domestic water supplies.

Keep children and pets out of treated areas until these areas are dry.

SEE ADDITIONAL PRECAUTIONARY STATEMENTS AND DIRECTIONS INSIDE BOOKLET.

Medical Information call 1-800-454-2333
Product Information call 1-800-225-2883

©Trademark of Monsanto Company
©Monsanto Company 1996
Manufactured for
The SOLARIS Group of
Monsanto Company
P.O. Box 5008
San Ramon CA 94583-0808
Form 0-995-02
EPA Reg. No. 239-2513
EPA Est. 239-A-3
58996-MO-14
Superscript is first letter
of lot number
Made in USA



0 71549 01743 9

DIRECTIONS FOR USE

It is a violation of Federal law to use this product in a manner inconsistent with its labeling.

READ ENTIRE LABEL. USE STRICTLY IN ACCORDANCE WITH LABEL PRECAUTIONARY STATEMENTS AND DIRECTIONS.

tsp = teaspoon 1 fl oz = 2 Tbs SHAKE WELL BEFORE USING
Tbs = Tablespoon 4 fl oz = 1/2 cup

BORERS & LEAF MINERS ON TREES & SHRUBS

Application timing is important. Consult your County Cooperative Extension Agent for proper time to treat.

PESTS	TREES or SHRUBS	PRODUCT TO MEASURE WHEN TO APPLY
Beetles (Cottonwood Leaf, Elm Leaf, Flea, Willow Leaf)	Cottonwood, Elm, Willow	• 4 tsp/gal of water • Apply when pests are present • Thoroughly wet upper and lower leaf surfaces. • Reapply at 7 to 10 day intervals if needed.
Weevils (Black Vine, Yellow Poplar, Pine)	Rhododendron, Poplar, Pine	• 1 1/2 fl oz (3 Tbs)/gal of water • Spray trunks and lower limbs of trees and shrubs when adults begin to emerge.
Borers (Ash, Dogwood, Lesser Peachtree, Lilac, Oak, Rhododendron, Bronze Birch, Redheaded Appletree, Locust, Red Oak)	Ash, Lilac, Oak, Dogwood, Rhododendron, Birch, Locust	• 1 1/2 fl oz (3 Tbs)/gal of water • Spray when leaf miners appear in early and mid-way.
Leaf miners	Elm, Birch, Locust	• 1 1/2 fl oz (3 Tbs)/gal of water • Spray when leaf miners appear in early and mid-way.

(continued on next page)

(continued)

PESTS	TREES or SHRUBS	PRODUCT TO MEASURE WHEN TO APPLY
Needleminers	Pine, Spruce	• 1 1/2 fl oz (3 Tbs)/gal of water
Beetles (Ambrosia, Black Turpentine, European Elm Bark, Japanese, June, Southern Pine, Spruce)	Elm, Pine, Spruce	• 10 3/4 fl oz (1 1/4 cups)/gal of water • Apply with tank sprayer only. • To prevent infestation, spray the tree trunk in early Spring. • To treat infested trees, spray the tree trunk before adult beetles begin to emerge. • Avoid contact with foliage to prevent leaf damage.

Application timing is important. Consult your County Cooperative Extension Agent for proper time to treat.

PESTS	FRUIT TREES	PRODUCT TO MEASURE WHEN TO APPLY
Dogwood Borer	Apples	• 2 fl oz (4 Tbs)/gal of water • Wait 1 month after last application before harvesting fruit. • Soak tree trunks and the soil around the base of trees in the spring. • Apply up to 8 times per season. • Wait 3 weeks between treatments.

(continued on next page)

(continued)

PESTS	FRUIT TREES	PRODUCT TO MEASURE WHEN TO APPLY
Borers (Lesser Peachtree, Great Peachtree, American Plum)	Sweet Cherries	• 2 fl oz (4 Tbs)/gal of water • Spray trunks and lower limbs. Avoid contact with foliage to prevent leaf damage. • Apply up to 3 times per season. • Apply second application 2 weeks after the first. • Make third application after harvest.
Borers (American Plum, Lesser Peachtree, Pacific Flatheaded, Peach Twig, Peachtree, Shot-hole)	Sour Cherries	• 2 fl oz (4 Tbs)/gal of water • Spray tree trunks and lower limbs. • Apply up to 3 times per season.
Peachtree Borers	Nectarines, Peaches	• 4 fl oz (8 Tbs)/gal of water • Spray bark from the ground up to the lower branches. • Do not spray fruit. • Make only 1 application per year.

Do not use inside dwellings.

STORAGE: Keep pesticide in original container. Do not put concentrate or dilute into food or drink containers. Avoid contamination of feed, foodstuffs and domestic water supplies. Store in a cool, dry place, preferably in a locked storage area. Do not store diluted spray. Store above freezing. Handle concentrate in a ventilated area. Keep container closed. **DISPOSAL:** PRODUCT - Partially filled bottle may be disposed of by securely wrapping original container in several layers of newspaper and discard in trash. **CONTAINER:** Do not reuse empty bottle. Rinse thoroughly before discarding in trash.

PRECAUTIONARY STATEMENTS

HAZARDS TO HUMANS & DOMESTIC ANIMALS
WARNING: Causes eye irritation. Harmful if swallowed. Do not get in eyes, on skin or clothing. Avoid breathing vapors and spray mist. Handle concentrate in ventilated area. Wash thoroughly after handling and before eating or smoking. Do not wear contaminated clothing or shoes. Keep away from food, feedstuffs and domestic water supplies.

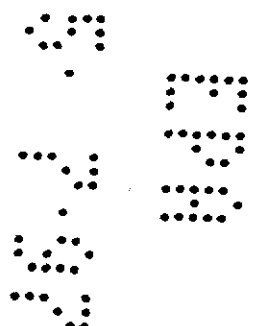
Keep children and pets out of treated areas until these areas are dry.

FIRST AID: IF SWALLOWED: DO NOT make person vomit. Call a doctor immediately. IF ON SKIN: In case of contact, remove contaminated clothing and immediately wash skin with soap and water. IF IN EYES: Flush eyes with plenty of water. Call a physician and get medical attention. Write to Physician: Emergency Information call 1-800-454-2333. This product contains an aromatic petroleum solvent and may present an aspiration problem. Chlorpyrifos is a cholinesterase inhibitor. If signs and symptoms of cholinesterase inhibition develop, atropine by injection is antidotal. 2-PAM may also be given in conjunction with atropine, but should never be used alone. **ENVIRONMENTAL HAZARDS:** This product is toxic to fish, birds and other wildlife. Do not apply directly to water. Do not contaminate water by cleaning of equipment or disposal of wastes. **PHYSICAL OR CHEMICAL HAZARDS:** Do not expose or store near heat or open flame. **NOTICE:** Bayer assumes all responsibility for safety and use not in accordance with directions.

Medical Information call 1-800-454-2333
Product Information call 1-800-225-2883

Manufactured for The SOLARIS Group of Monsanto Company
P.O. Box 5008, San Ramon CA 94583-0808
Form 0-995-02
EPA Reg. No. 239-2513 EPA Est. 239-A-3, 58996-MO-14
Superscript is first letter of lot number Made in USA

3/2 e



ORTHO®

HomeDefense® Ortho-Klor® Insect & Termite Killer

CONCENTRATE

For Use Around Foundations,
Outside Buildings, Lawns, Woodpiles,
Stored Lumber and Fence Posts

CONTROLS: *Ants, Subterranean Termites,
Wood Borers, Carpenter Ants, Fleas, Ticks,
Spiders, Scorpions, and Many Other
Soil Insects and Home Invading Pests*

CONTAINS: Dursban®

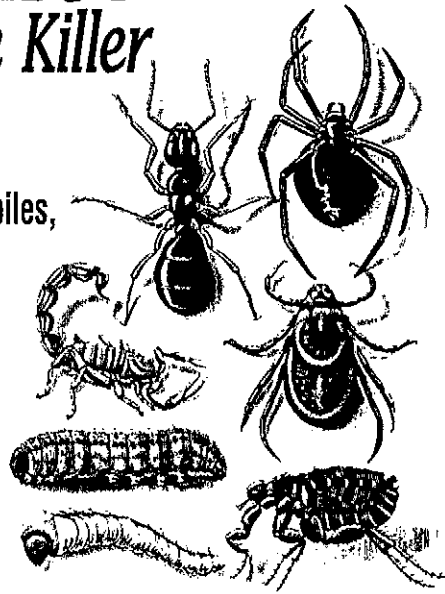
Active Ingredient
Chlorpyrifos (0,0-diethyl 0-(3,5,6-Trichloro-2-
pyridinyl)phosphorothioate)..... 12.6%
*Inert Ingredients..... 87.4%

*This product contains aromatic petroleum solvent.

KEEP OUT OF REACH OF CHILDREN

WARNING See back panel booklet for additional
precautionary statements.

NET CONTENTS 64 FL OZ (1/2 GAL) 1.89 L



9-817-04

MAKES UP TO
548 GALLONS OF SPRAY



ORTHO®

HomeDefense® Ortho-Klor® Insect & Termite Killer



For prevention and control of ants, subterranean termites, and certain wood destroying insects. This product can be used for treatment of localized areas of wooden structures, firewood piles and stored lumber to control wood infesting borers, carpenter ants and carpenter bees. In addition, controls many common pests in lawns and other outdoor areas around the home specially formulated for residential use.

DO NOT USE INSIDE DWELLINGS

Peel open for use directions and further information

WARNING: Causes eye irritation. Harmful if swallowed. Do not get in eyes, on skin or clothing. Avoid breathing vapors and spray mist. Handle concentrate in ventilated area. Wash thoroughly after handling and before eating or smoking. Do not wear contaminated clothing or shoes. Keep away from food, feedstuffs and domestic water supplies.

Keep children and pets out of treated areas until these areas are dry.

SEE ADDITIONAL PRECAUTIONARY STATEMENTS AND DIRECTIONS
INSIDE BOOKLET.

Medical Information call 1-800-454-2333
Product Information call 1-800-225-2883

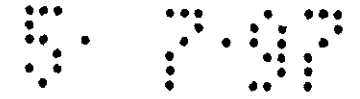
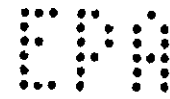
ORTHO®, ORTHO-KLOR®, DIAL 'n SPRAY®, SOLARIS®, HomeDefense® Trademarks of Monsanto Company
DURSBAN® Trademark of Dow/Elanco
©Monsanto Company 1994

SOLARIS®
Manufactured for
The SOLARIS Group of Monsanto Company
PO Box 5008 San Ramon CA 94583-0808
Form 0-817-04
EPA Reg. No. 239-2513
EPA Est. 233-1A-3, 58996-MO-1A
Superscript is first letter of lot number
Made in USA



PRESS TO RESEAL

9/6



DIRECTIONS FOR USE

It is a violation of Federal law to use this product in a manner inconsistent with its labeling.

READ ENTIRE LABEL. USE STRICTLY IN ACCORDANCE WITH LABEL PRECAUTIONARY STATEMENTS AND DIRECTIONS.

tsp = teaspoon
Tbs = Tablespoon
2 Tbs = 1 fl oz
4 fl oz = 1/2 cup

SHAKE WELL BEFORE USING.

HOME INVADING PESTS (OUTSIDE DWELLINGS)

Ants, Bees, Beetles (1), Box Elder Bugs, Carpenter Ants (1), Carpenter Bees (1), Centipedes, Clover Mites, Cockroaches, Crickets, Earwigs, Elm Leaf Beetles, Fleas, Flies, Hornets, House Flies, Millipedes, Mosquitoes, Scorpions (2), Silverfish, Sowbugs, Spiders, Springtails, Ticks, Wasps, Yellowjackets.

NOTE: Number(s) in parentheses refer to Specific Directions. (1) For added information, see section on Treatment For Wood Destroying Pests. (2) For Scorpions, remove accumulations of lumber, firewood, and other materials which serve as harborage sites and treat beneath and adjacent to infested areas.

FOR PEST CONTROL ON OUTSIDE SURFACES AND AROUND BUILDINGS:

Spray outside surfaces of buildings and surrounding areas, including porches, window frames, doorways, foundations, eaves, patios, garages, garbage cans, and other areas where pests congregate or can gain entrance. Repeat treatment as needed. **DO NOT TREAT PETS WITH THIS PRODUCT. DO NOT USE IN DWELLINGS.**

Treat a band of soil 6 ft wide around buildings, also the building foundation to a height of 2 to 3 ft. Spray 10 gal mixture per 1,000 sq ft.

AMOUNT TO USE FOR HOME INVADING PESTS (Outdoors): For use in hose-end sprayer, tank-type sprayer or sprinkling can: Apply 2 tsp in one gal of water to

cover 100 sq ft. For use in an ORTHO® DIAL 'n SPRAY®: Add 3 1/2 fl oz undiluted product to sprayer jar, set dial on sprayer at 2 tsp/gal and spray until jar is empty to treat 1,000 sq ft.

TREATMENT FOR WOOD DESTROYING PESTS (Outdoors)

Carpenter Ants, Carpenter Bees, Powder Post Beetles, Deathwatch Beetles, Furniture Beetles, Round-headed House Borers. Treat localized areas of infested wood. Mix 2 1/2 Tbs per quart of water. Apply evenly on wood surfaces with a paint brush. Allow to dry and repeat to ensure penetration.

For wood piles and stored lumber apply 5 1/3 fl oz per gal of water. Use a hose-end sprayer or sprinkling can to deliver a coarse drenching spray. Do not use in structures occupied by animals to be used for food purposes or which produce products for human consumption.

FENCE POSTS – TERMITE PREVENTION (EXCEPT IN RHODE ISLAND)

Apply solution with a sprinkling can. Mix 5 1/3 fl oz per gal of water. Apply one gallon of diluted product per post hole. Pour 1/2 gal of solution into hole and add the remaining 1/2 gal to the soil when filling the hole so that all the fill soil is treated to form a protective barrier.

NOTE: Do not treat structures that contain cisterns or wells. Do not treat soil that is water saturated or frozen. Consult state and local specifications for recommended distances of treatment from well.

LAWN PESTS

Armyworm, Chiggers, Chinchbugs, Clover Mites, Crickets, Cutworms, Dichondra Flea Beetles, Earwigs, European Crane Fly (Larvae), Fiery Skipper Larvae (California and Hawaii only), Fleas, Grasshoppers, Lawn Moth Larvae (Sod Webworms), Tropical Grass Webworms (Hawaii only) – For use in an ORTHO DIAL 'n SPRAY® Hose-End Sprayer: Add 3 1/2 fl oz undiluted product to sprayer jar, set dial on sprayer at 2 tsp/gal and spray until jar is empty to treat 1,000 sq ft. For use with an ORTHO Lawn Sprayer: Add 1 3/4 fl oz product to sprayer jar, fill jar with water to the 15 gal mark and spray evenly over 500 sq ft.

9/5

Mow and water 1 to 2 days before treatment. Heavy watering should be withheld for 2 to 3 days following treatment. Spray when pests first appear. Treat entire lawn. Do not attempt to control lawn pests by spot spraying. Repeat treatments may be necessary at 4 to 6 week intervals. For European Crane Fly control, consult your County Cooperative Extension Agent for proper timing of application for your area.

White Grubs In Lawns

(Larvae of European Chafer and Japanese Beetle) – For use in an ORTHO DIAL 'n SPRAY® Hose-End Sprayer: Add 13 fl oz undiluted product to sprayer jar, set dial on sprayer at 1 oz per gal and spray until jar is empty to treat 1,000 sq ft. Water lawn thoroughly after application. For use with an ORTHO Lawn Sprayer: Add 6 1/2 fl oz product to sprayer jar. Fill jar with water to the 15 gal mark and spray evenly over 500 sq ft. Treat entire lawn. Do not attempt to control lawn pests by spot spraying. Water lawn thoroughly to wash the insecticide into the soil. Treat lawn when grubs are young and actively feeding near the soil surface, usually during late July and August. Consult your County Cooperative Extension Agent for proper time to treat in your area.

Mosquitoes (Outdoors): Mosquitoes coming to rest on treated areas will be killed for varying periods of time, depending on exposure of treated areas to weathering conditions.

NOTE: Do not use on vegetables or food crops. Do not use on azaleas, camellias, poinsettias, rose bushes or variegated ivy because of possible injury to the plants.

IMPORTED FIRE ANT MOUNDS

Mix 2 Tbs per gal of water to each mound, using a sprinkler can. Thoroughly wet mound and treat a 4 ft diameter circle around the mound. For best results, apply in cool weather or in early morning or late afternoon. Treat new mounds as they appear.

EP

5 7 9 7


STORAGE AND DISPOSAL

STORAGE: Keep pesticide in original container. Do not put concentrate or dilute into food or drink containers. Avoid contamination of feed, foodstuffs and domestic water supplies. Store in a cool, dry place, preferably in a locked storage area. Do not store diluted spray. Store above freezing. Handle concentrate in a ventilated area. Keep container closed. **DISPOSAL: PRODUCT** – Partially filled bottle may be disposed of by securely wrapping original container in several layers of newspaper and discard in trash. **CONTAINER** – Do not reuse empty bottle. Rinse thoroughly before discarding in trash.

PRECAUTIONARY STATEMENTS

HAZARDS TO HUMANS & DOMESTIC ANIMALS

WARNING: Causes eye irritation. Harmful if swallowed. Do not get in eyes, on skin or clothing. Avoid breathing vapors and spray mist. Handle concentrate in ventilated area. Wash thoroughly after handling and before eating or smoking. Do not wear contaminated clothing or shoes. Keep away from food, feedstuffs and domestic water supplies.

 Keep children and pets out of treated areas until these areas are dry.

FIRST AID: IF SWALLOWED: DO NOT make person vomit. Call a doctor immediately. **IF ON SKIN:** In case of contact, remove contaminated clothing and immediately wash skin with soap and water. **IF IN EYES:** Flush eyes with plenty of water. Call a physician and get prompt medical attention. **Note to Physicians:** Emergency information call 1-800-454-2333. This product contains an aromatic petroleum solvent and may present an aspiration problem. Chlorpyrifos is a cholinesterase inhibitor. If signs and symptoms of cholinesterase inhibition develop, atropine by injection is antidotal; 2-PAM may also be given in conjunction with atropine, but should never be used alone.

ENVIRONMENTAL HAZARDS: This product is toxic to fish, birds, and other wildlife. Do not apply directly to water. Do not contaminate water by cleaning of equipment or disposal of wastes.

PHYSICAL OR CHEMICAL HAZARDS: Do not use or store near heat or open flame.

NOTICE: Buyer assumes all responsibility for safety and use not in accordance with directions.



Medical Information call 1-800-454-2333

Product Information call 1-800-225-2883

ORTHO®, ORTHO-KLOR®, DIAL 'n SPRAY®, SOLARIS®, HomeDefense® Trademarks of Monsanto Company
DURSBAN® Trademark of DowElanco

©Monsanto Company 1994

Manufactured for The SOLARIS Group of Monsanto Company

PO Box 5008 San Ramon CA 94583-0808

Form 0-817-04

EPA Reg. No. 239-2513

EPA Est. 239-1A-31, 58996-MO-1A

Superscript is first letter of lot number

Made in USA

6/9